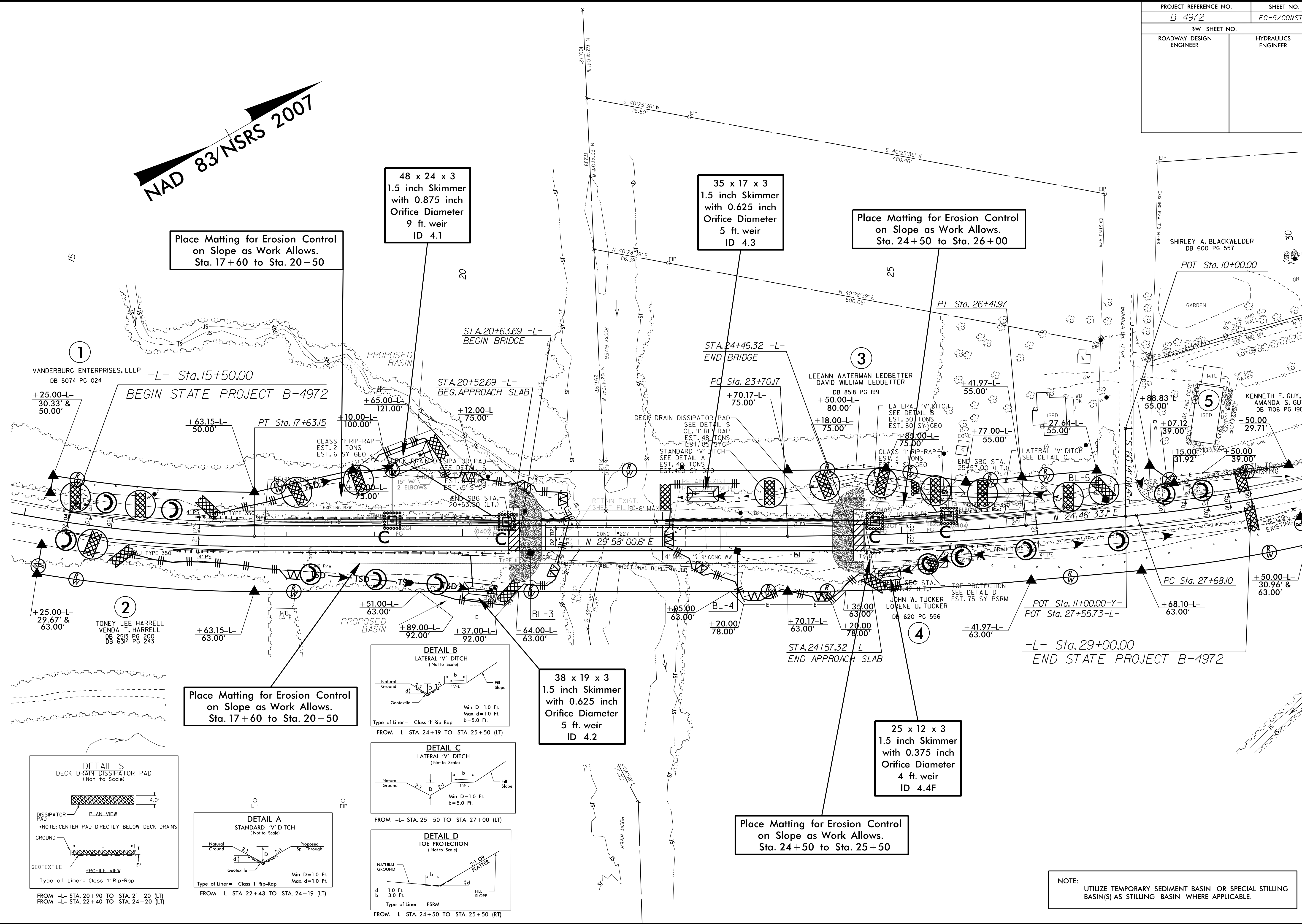


PROJECT REFERENCE NO. B-4972	SHEET NO. EC-5/CONST.4
RW SHEET NO.	
ROADWAY DESIGN ENGINEER	HYDRAULICS ENGINEER

NAD 83/NSRS 2007



Place Matting for Erosion Control on Slope as Work Allows. Sta. 17+60 to Sta. 20+50

48 x 24 x 3  
1.5 inch Skimmer  
with 0.875 inch Orifice Diameter  
9 ft. weir  
ID 4.1

35 x 17 x 3  
1.5 inch Skimmer  
with 0.625 inch Orifice Diameter  
5 ft. weir  
ID 4.3

Place Matting for Erosion Control on Slope as Work Allows. Sta. 24+50 to Sta. 26+00

1  
VANDERBURG ENTERPRISES, LLLP  
DB 5074 PG 024  
-L- Sta. 15+50.00  
BEGIN STATE PROJECT B-4972

2  
TONEY LEE HARRELL  
VENDA T. HARRELL  
DB 2513 PG 209  
DB 6314 PG 243

3  
LEEANN WATERMAN LEDBETTER  
DAVID WILLIAM LEDBETTER  
DB 8518 PG 199

4  
JOHN W. TUCKER  
LORENE U. TUCKER  
DB 620 PG 556

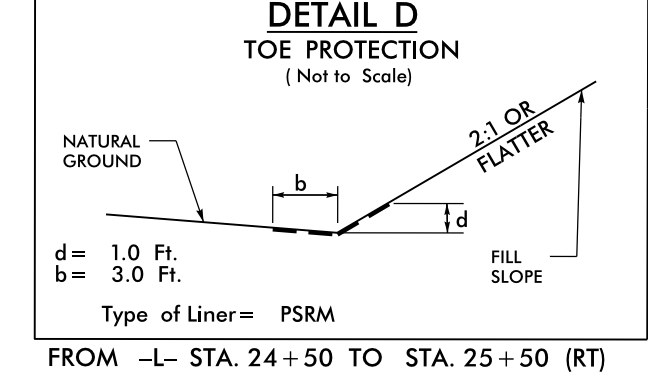
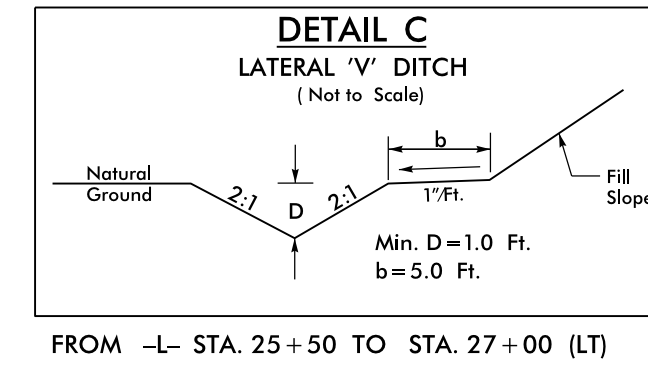
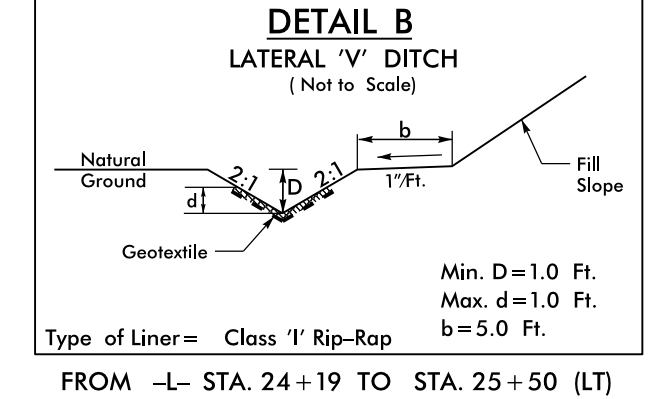
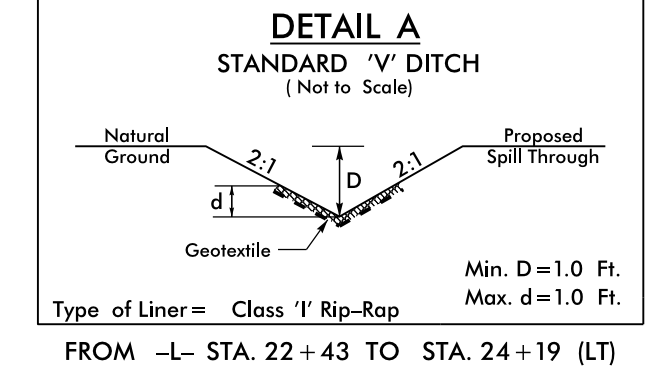
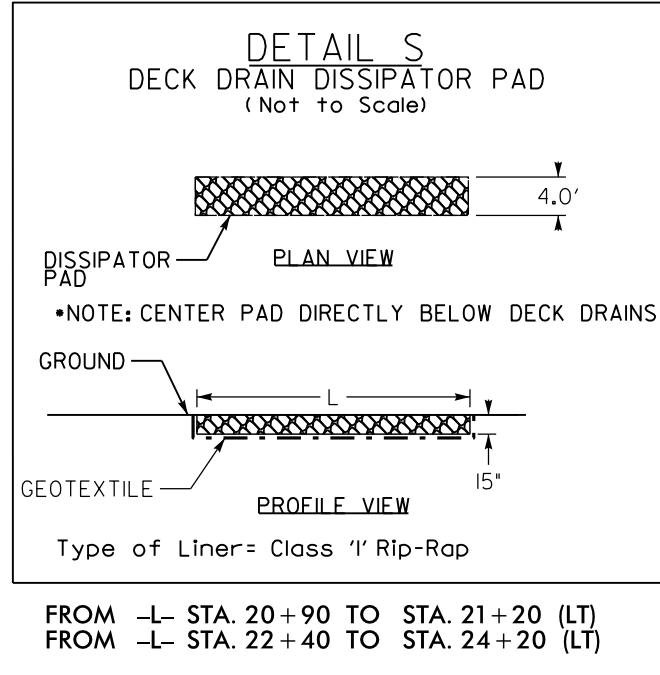
5  
KENNETH E. GUY, JR  
AMANDA S. GUY  
DB 7106 PG 198

Place Matting for Erosion Control on Slope as Work Allows. Sta. 17+60 to Sta. 20+50

38 x 19 x 3  
1.5 inch Skimmer  
with 0.625 inch Orifice Diameter  
5 ft. weir  
ID 4.2

25 x 12 x 3  
1.5 inch Skimmer  
with 0.375 inch Orifice Diameter  
4 ft. weir  
ID 4.4F

Place Matting for Erosion Control on Slope as Work Allows. Sta. 24+50 to Sta. 25+50



NOTE: UTILIZE TEMPORARY SEDIMENT BASIN OR SPECIAL STILLING BASIN(S) AS STILLING BASIN WHERE APPLICABLE.

8/17/99  
92-MAR-2015 13:52 Design\6-4972.EC-psht.dgn  
PLT:mvir\01\101266918