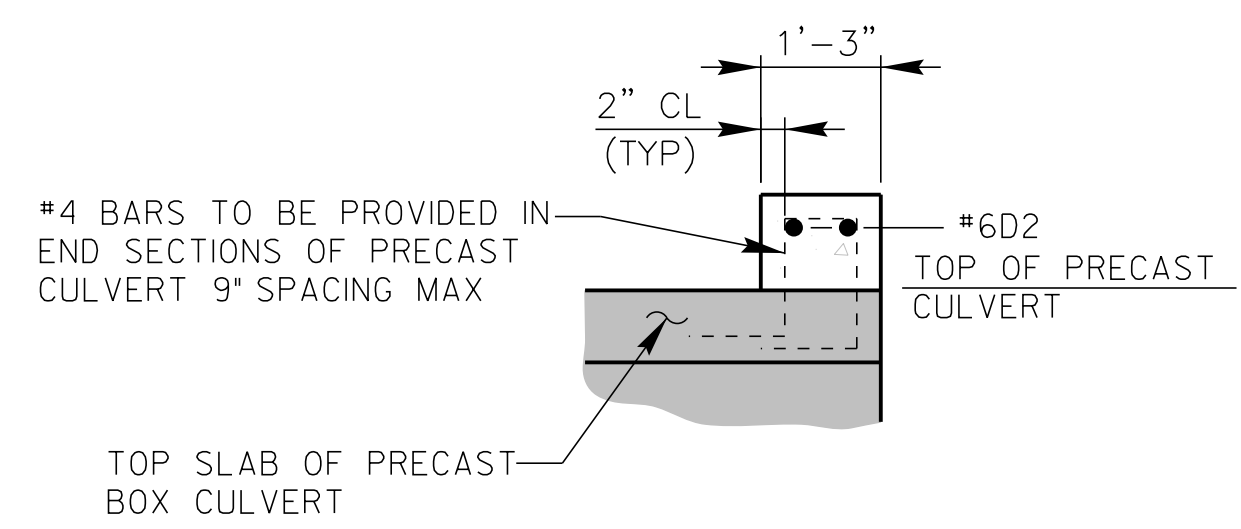
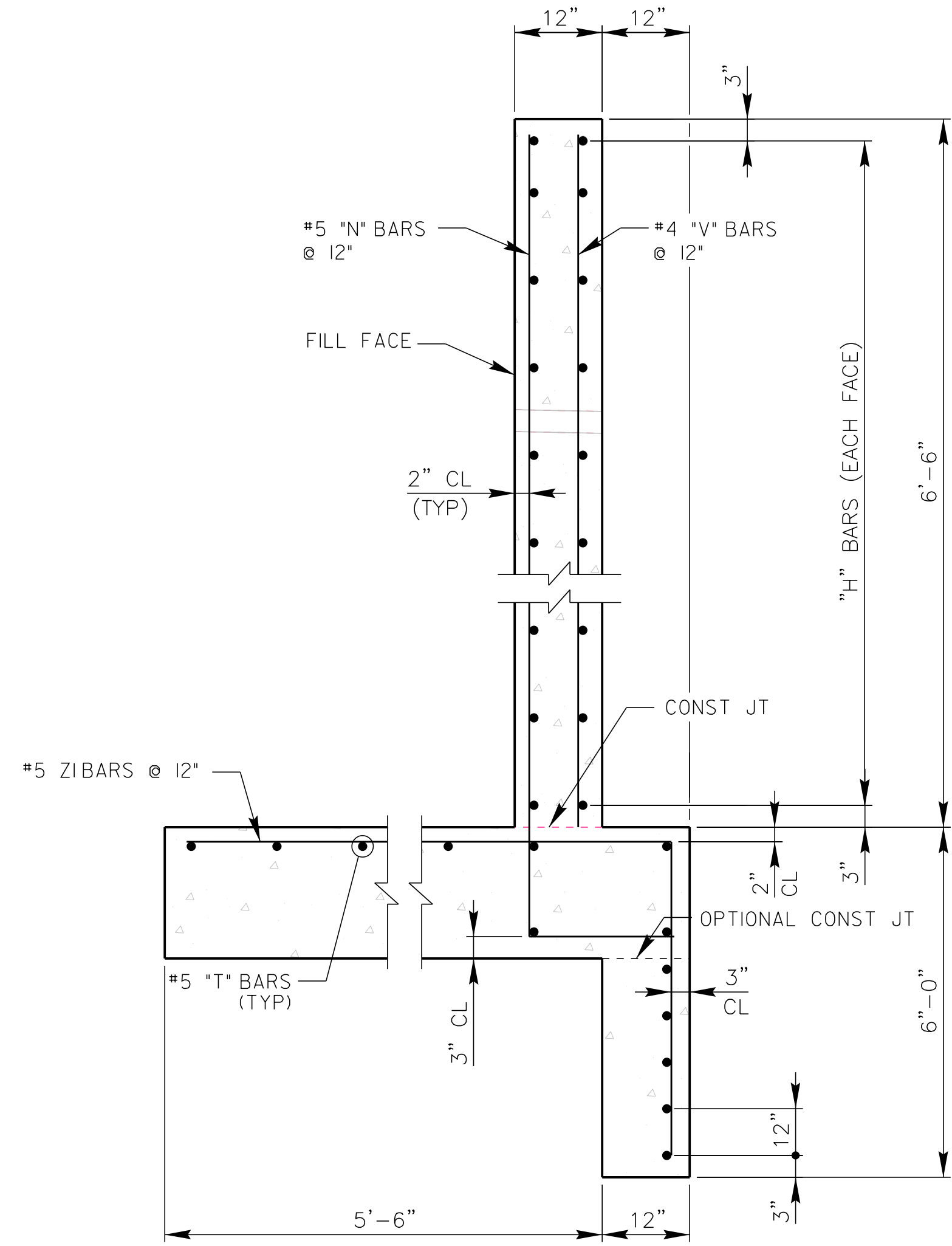


SECTION A - A
SCALE: 3/4" = 1'-0"

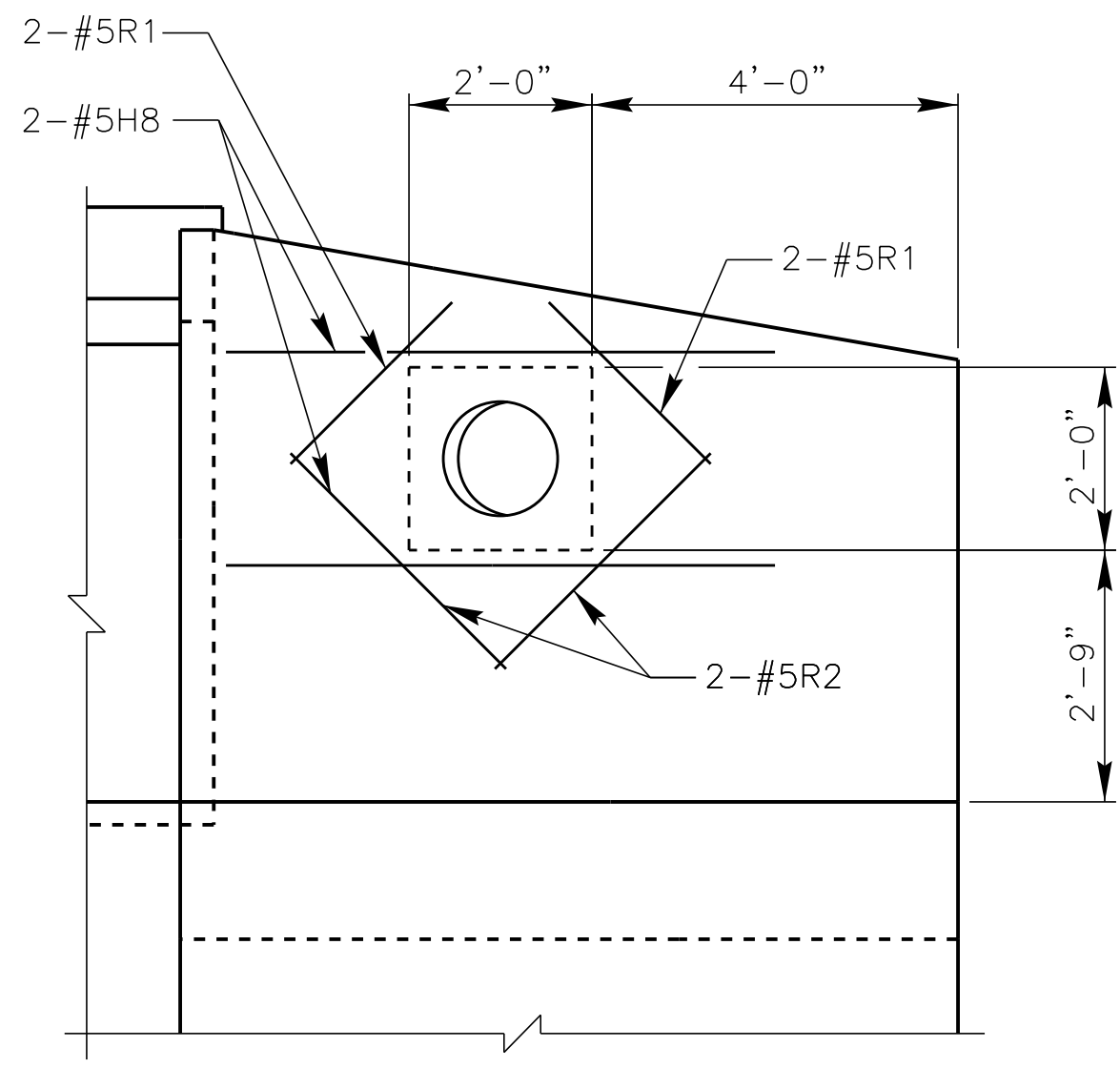


HEADWALL DETAIL
SCALE: 3/4" = 1'-0"

NOTES:
FOR SECTION CUTS A-A & B-B SEE SHEET C-4.
DI BARS MAY BE DRILLED AND GROUTED INTO PRECAST SECTION, OR CONTRACTOR MAY HAVE DI BARS CAST WITH PRECAST END UNITS.

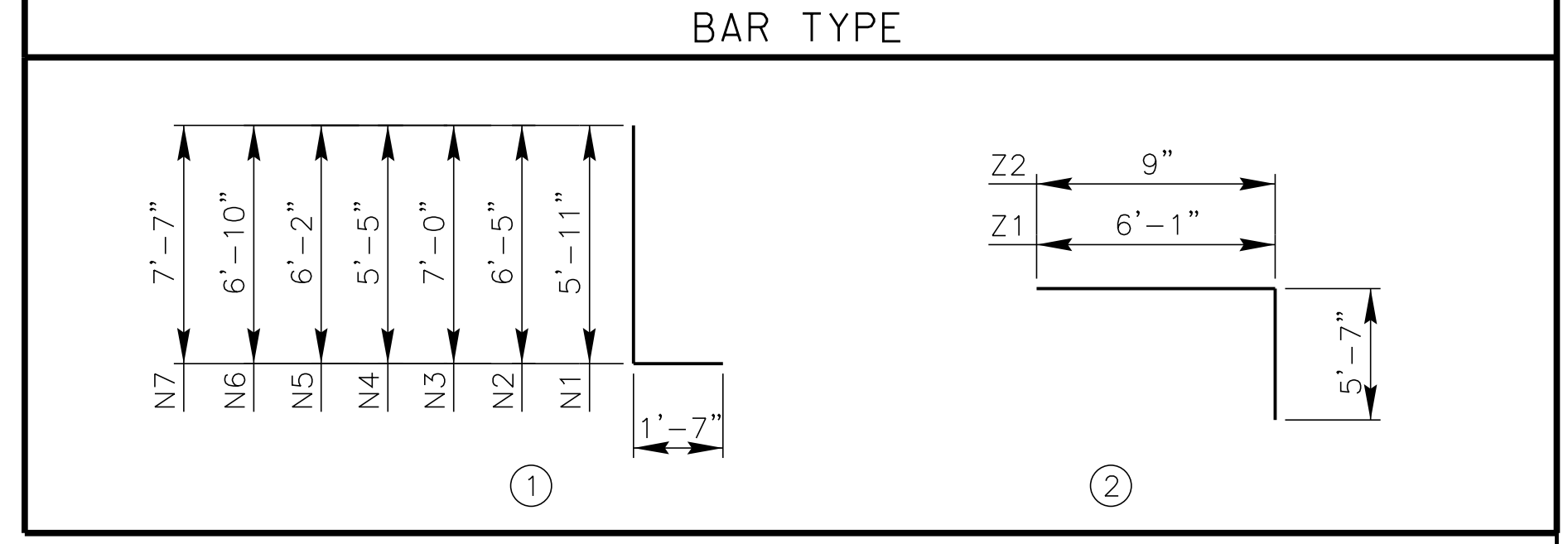


SECTION B - B
SCALE: 3/4" = 1'-0"



OPENING DETAIL
SCALE: 1/2" = 1'-0"

REINFORCING BAR SCHEDULE						REINFORCING BAR SCHEDULE					
PHASE 1						PHASE 2					
BAR	NO.	SIZE	TYPE	LENGTH	WEIGHT	BAR	NO.	SIZE	TYPE	LENGTH	WEIGHT
D1	12	5	STR	1'-9"	22	D1	13	5	STR	1'-9"	24
D2	2	6	STR	14'-1"	42	D2	2	6	STR	14'-1"	9
H1	4	5	STR	4'-9"	20	H2	10	5	STR	7'-9"	81
H2	20	5	STR	7'-9"	162	H4	2	5	STR	4'-9"	10
H3	4	5	STR	7'-10"	33	H5	2	5	STR	1'-9"	4
H8	4	5	STR	6'-0"	25	H6	2	5	STR	8'-0"	17
N1	6	5	1	7'-6"	47	H7	14	5	STR	11'-7"	169
N2	7	5	1	8'-0"	58	N4	3	5	1	7'-0"	22
N3	7	5	1	8'-7"	63	N5	3	5	1	7'-9"	24
R1	4	5	STR	2'-6"	10	N6	3	5	1	8'-5"	26
R2	4	5	STR	3'-4"	14	N7	13	5	1	9'-2"	124
T1	24	5	STR	8'-6"	213	T1	12	5	STR	8'-6"	106
T2	4	5	STR	7'-9"	32	T2	2	5	STR	7'-9"	16
T3	6	5	STR	5'-1"	32	T3	3	5	STR	5'-1"	16
T6	7	5	STR	12'-8"	92	T4	14	5	STR	11'-7"	169
V1	6	4	STR	4'-8"	19	T5	14	5	STR	3'-0"	44
V2	7	4	STR	5'-2"	24	T7	7	5	STR	13'-1"	96
V3	7	4	STR	5'-9"	27	V4	3	4	STR	4'-2"	8
Z1	18	5	2	11'-8"	219	V5	3	4	STR	4'-11"	10
Z2	12	5	2	6'-4"	79	V6	3	4	STR	5'-7"	11
						V7	13	4	STR	6'-4"	55
						Z1	22	5	2	11'-8"	268
						Z2	13	5	STR	6'-4"	86
REINFORCING STEEL (LBS)					1233	REINFORCING STEEL (LBS)					1394
CLASS A CONCRETE (CY)					16.9	CLASS A CONCRETE (CY)					19.5



ALL BARS DIMENSIONS ARE OUT TO OUT

k:\PDT_Structures\Culvert\NC\011746003_U-3609A-BerkeleyBlvdCulvert-Goldboro\Coa\csp\C-5.dgn 3/25/2015

3					
2					
1					
NO.:	REVISION:	DATE:	DRAWN BY:	CHECKED BY:	

This document, together with the concepts and designs presented herein, as an instrument of services, is intended only for the specific purpose and client for which it was prepared. Reuse of and improper reliance on this document without written authorization and adoption by Kimley-Horn and Associates, Inc. shall be without liability to Kimley-Horn and Associates, Inc. Copyright Kimley-Horn and Associates, Inc., 2015

PREPARED IN THE OFFICE OF:

Kimley » Horn

333 FAYETTEVILLE STREET, SUITE 600 - RALEIGH, NC 27601-1772
PHONE: (919) 835-1494

WING WALL DETAILS
(SHEET 2 OF 2)
DOUBLE 6' x 5' PRECAST
CULVERT AT STA 33+65.00

DocuSigned by:
Cecil Nasson
3/25/2015

SCALE:
SCALE AS NOTED

PROJECT:
**U-3609A
BERKELEY BLVD CULVERT**

JOB NUMBER: 011746003 SHEET NUMBER: **C - 5**