

**SECTION ALONG L PRECAST CULVERT STA 33+65.00**

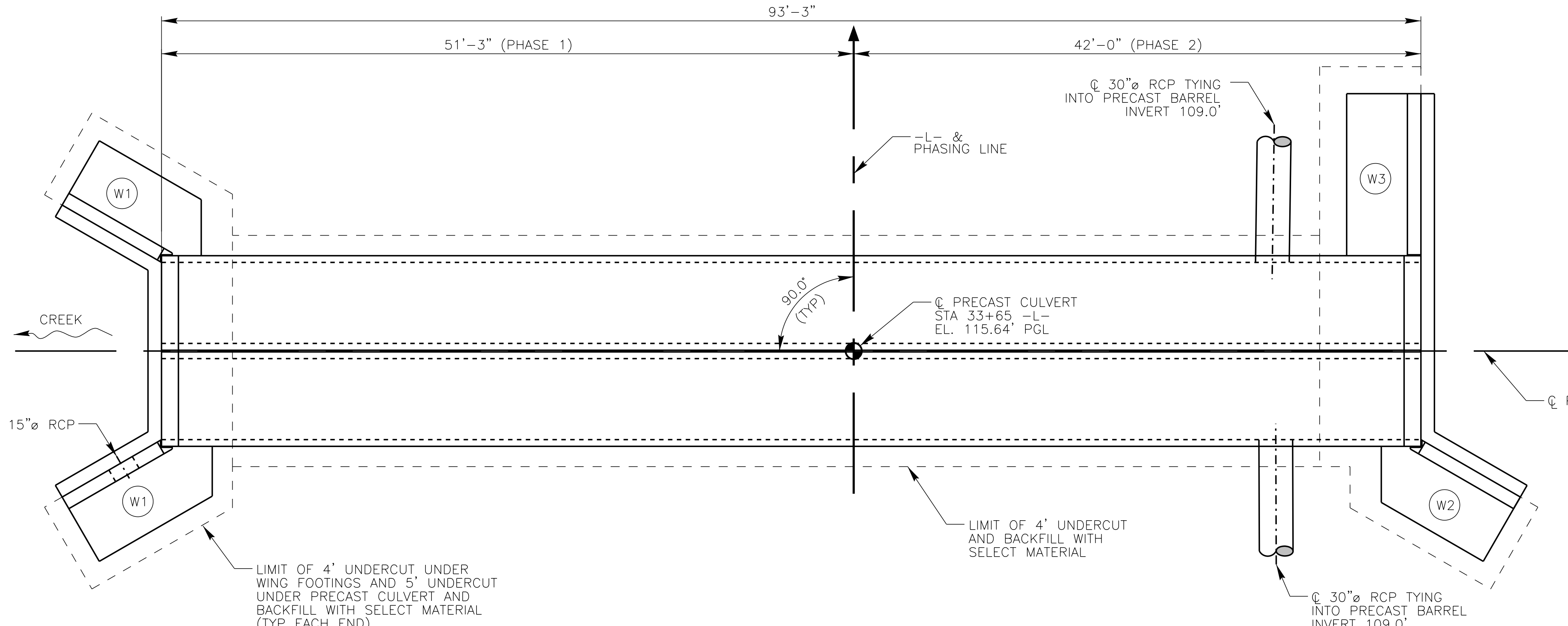
SCALE: 3/16" = 1'-0"

**BEDDING DETAIL UNDER PRECAST CULVERT**

SCALE: NTS

NOTE:  
CONTRACTOR TO SIZE AND LOCATE OPENINGS FOR RCP'S BASED ON ROADWAY AND UTILITY PLAN SHEETS. CONTRACTOR TO PROVIDE DETAILS FOR OPENING WITH PRECAST CULVERT SHOP DRAWINGS.

\* ASSUMED CULVERT WIDTH FOR WING WALL LAYOUT. CULVERT LAYOUT IS BASED ON TWO SINGLE CELL BOXES BUT CONTRACTOR MAY CHOOSE TO USE A DOUBLE CELL PRECAST BOX. WHICH WOULD BE DETAILED WITH SHOP DRAWINGS INCLUDING ANY WING ADJUSTMENTS THAT MAY BE REQUIRED.

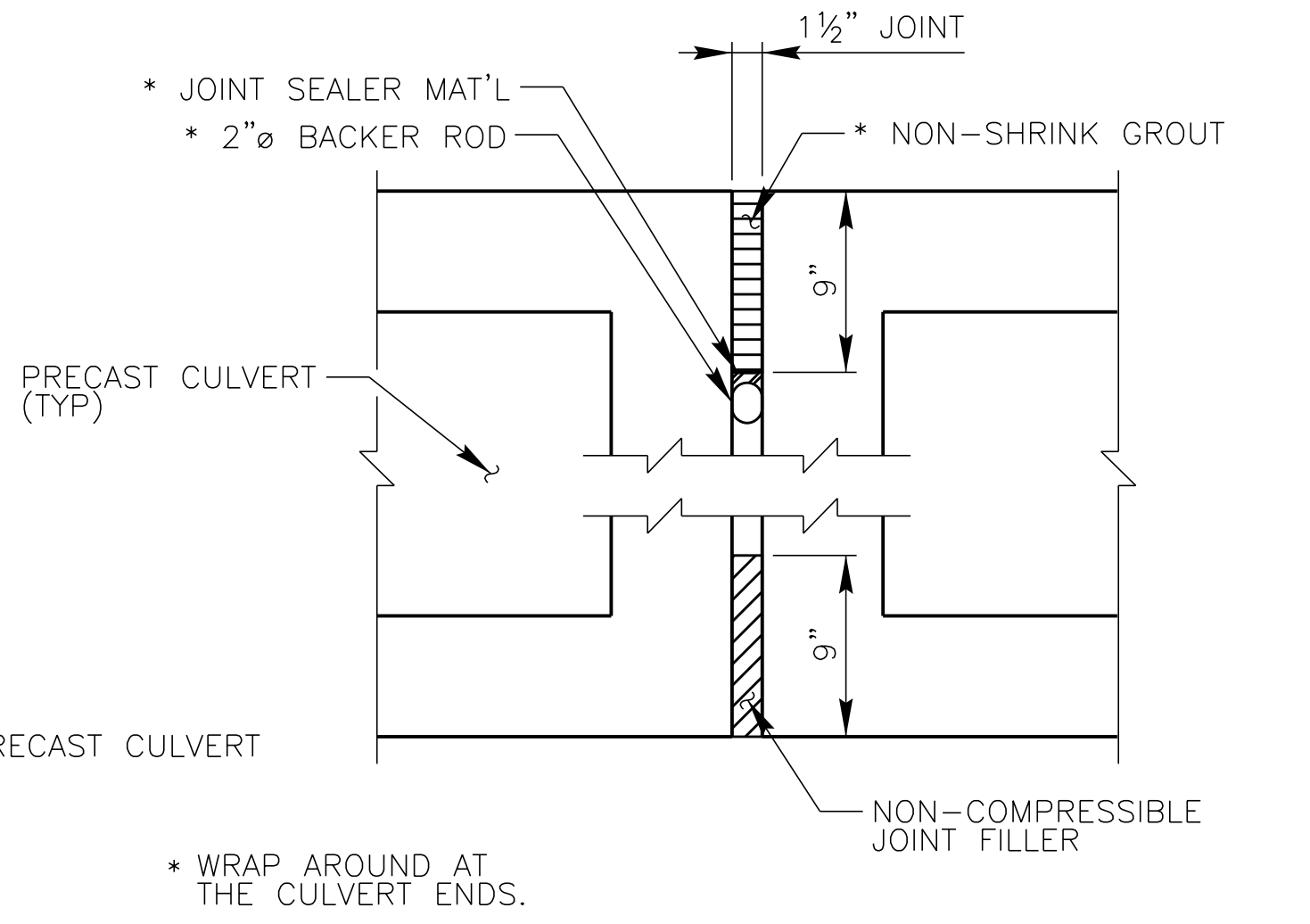


**LAYOUT PLAN**

SCALE: 3/16" = 1'-0"

**PRECAST CULVERT JOINT DETAIL**

SCALE: NTS



k:\PDT\_Structures\Culvert\NC\011746003\_U-3609A-BerkeleyBlvdCulvert-Goldboro\Coa\cgm\C-2.dgn

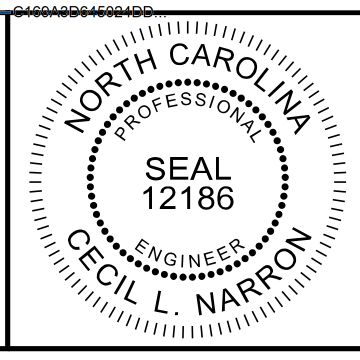
3				
2				
1				
NO.:	REVISION:	DATE:	DRAWN BY:	CHECKED BY:

PREPARED IN THE OFFICE OF:

# Kimley»Horn

333 FAYETTEVILLE STREET, SUITE 600 - RALEIGH, NC 27601-1772  
PHONE: (919) 835-1494

**SECTION AND PLAN**  
**DOUBLE 6' x 5' PRECAST CULVERT AT STA 33+65.00**



SCALE:  
SCALE AS NOTED

PROJECT:	<b>U-3609A BERKELEY BLVD CULVERT</b>
JOB NUMBER:	011746003
SHEET NUMBER:	<b>C-2</b>

This document, together with the concepts and designs presented herein, as an instrument of services, is intended only for the specific purpose and client for which it was prepared. Reuse of and improper reliance of this document without written authorization and adoption by Kimley-Horn and Associates, Inc. shall be without liability to Kimley-Horn and Associates, Inc. Copyright Kimley-Horn and Associates, Inc., 2015