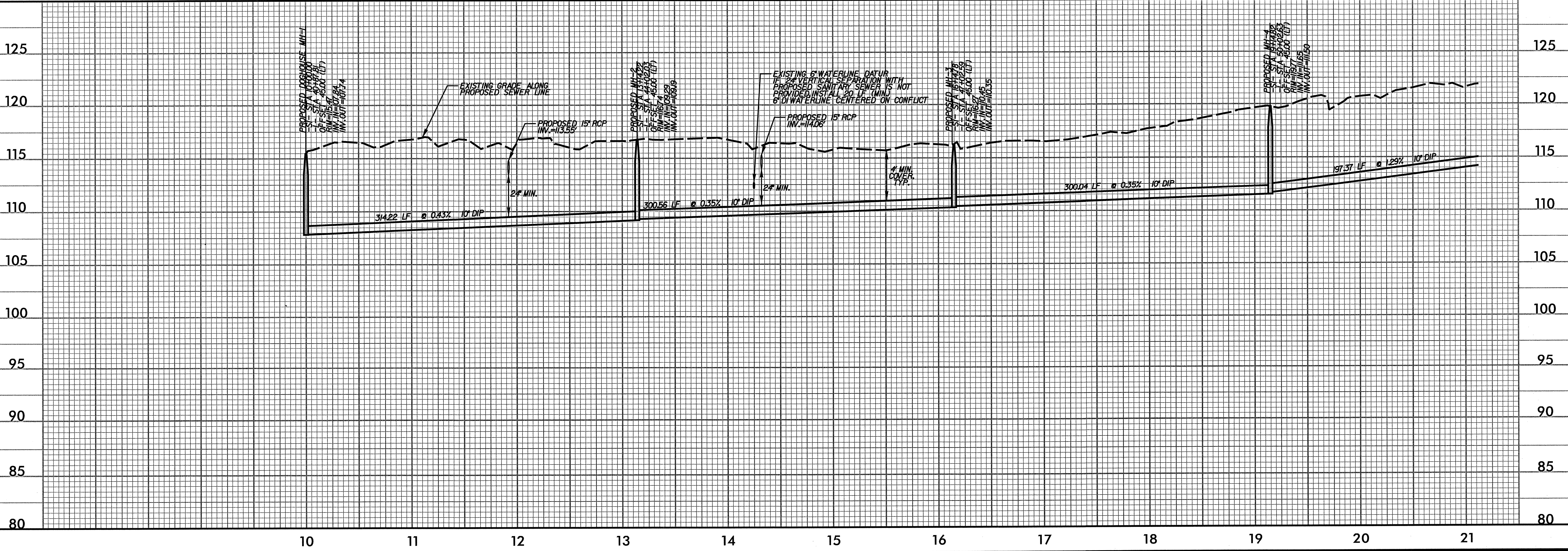
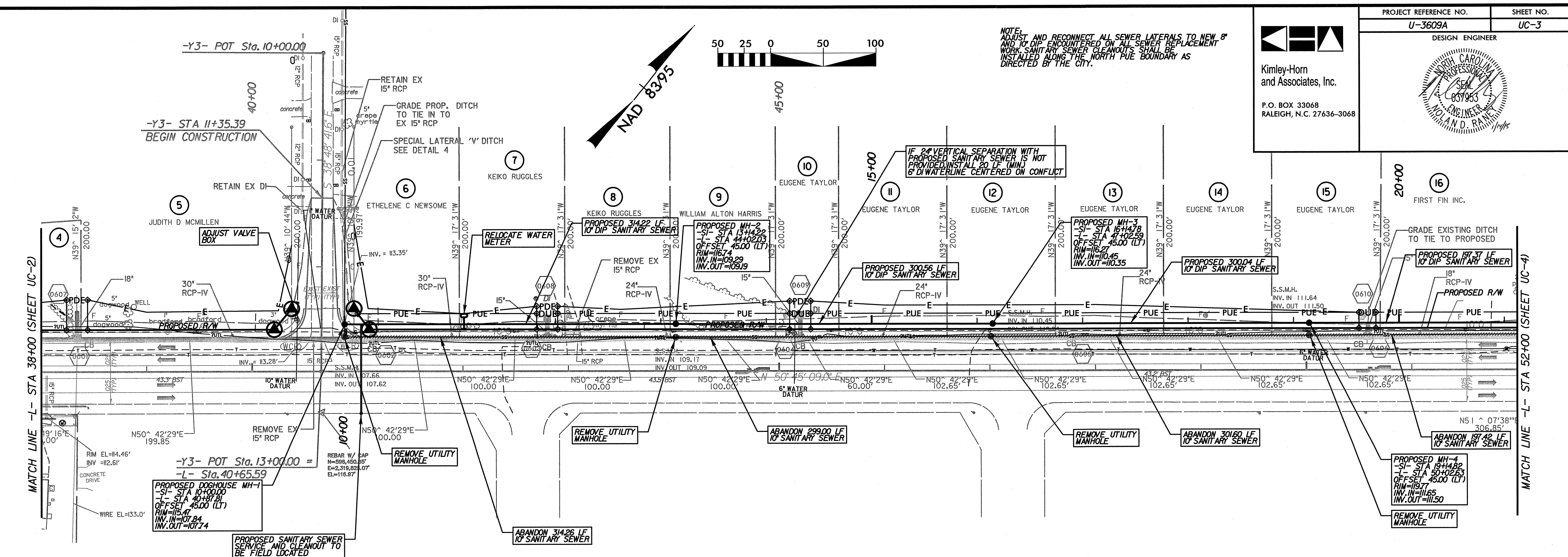
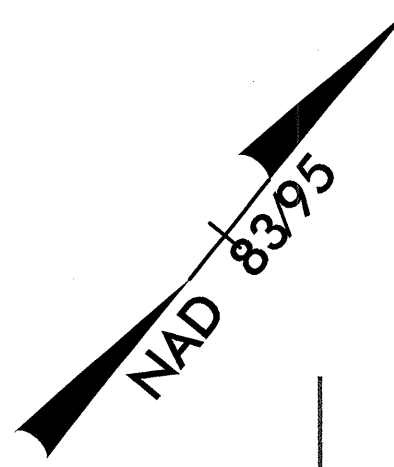


NOTE:
 ADJUST AND RECONNECT ALL SEWER LATERALS TO NEW 8" AND 10" DIP ENCOUNTERED ON ALL SEWER REPLACEMENT WORK. SANITARY SEWER CLEANOUTS SHALL BE INSTALLED ALONG THE NORTH PUE BOUNDARY AS DIRECTED BY THE CITY.



K:\RAL_Roadway\011746003 (Berkeley Blvd)\Plan\WaterSewer\011746003_UC03.dgn
 1/14/2015