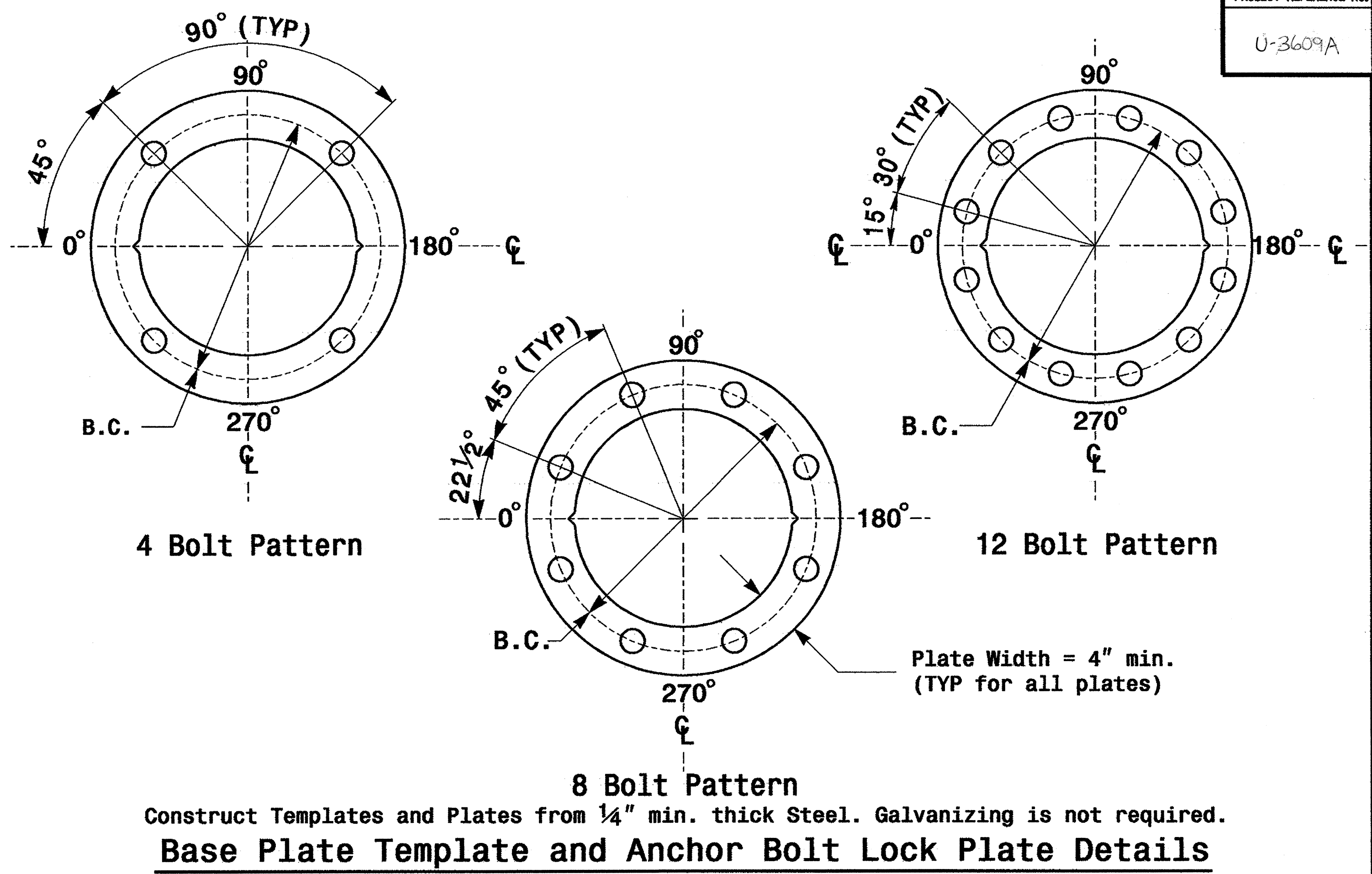


Terminal Compartment Detail



Base Plate Template and Anchor Bolt Lock Plate Details

Shaft I.D. Tag
(Provide on Strain Poles and Mast Arm Poles)

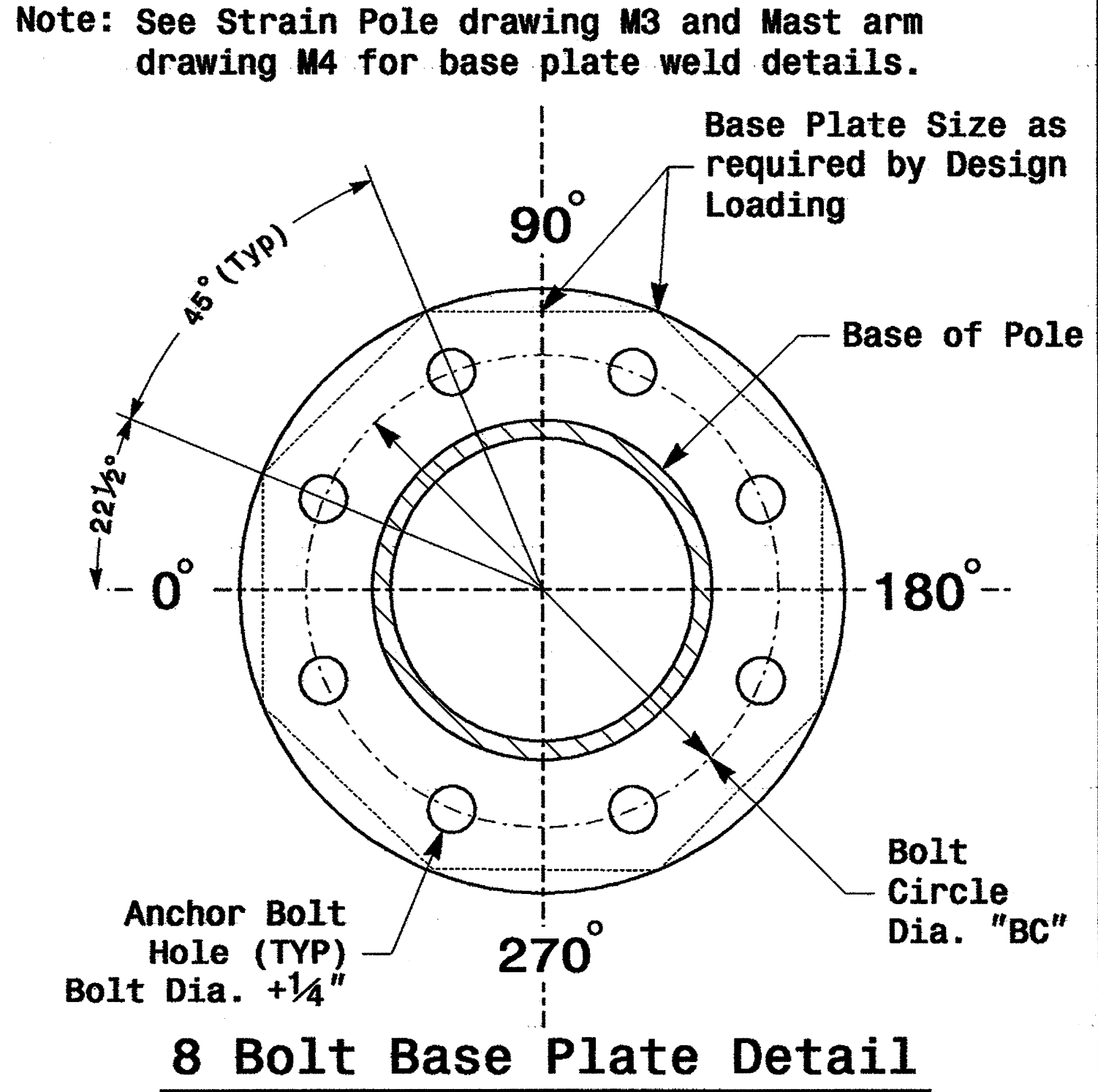
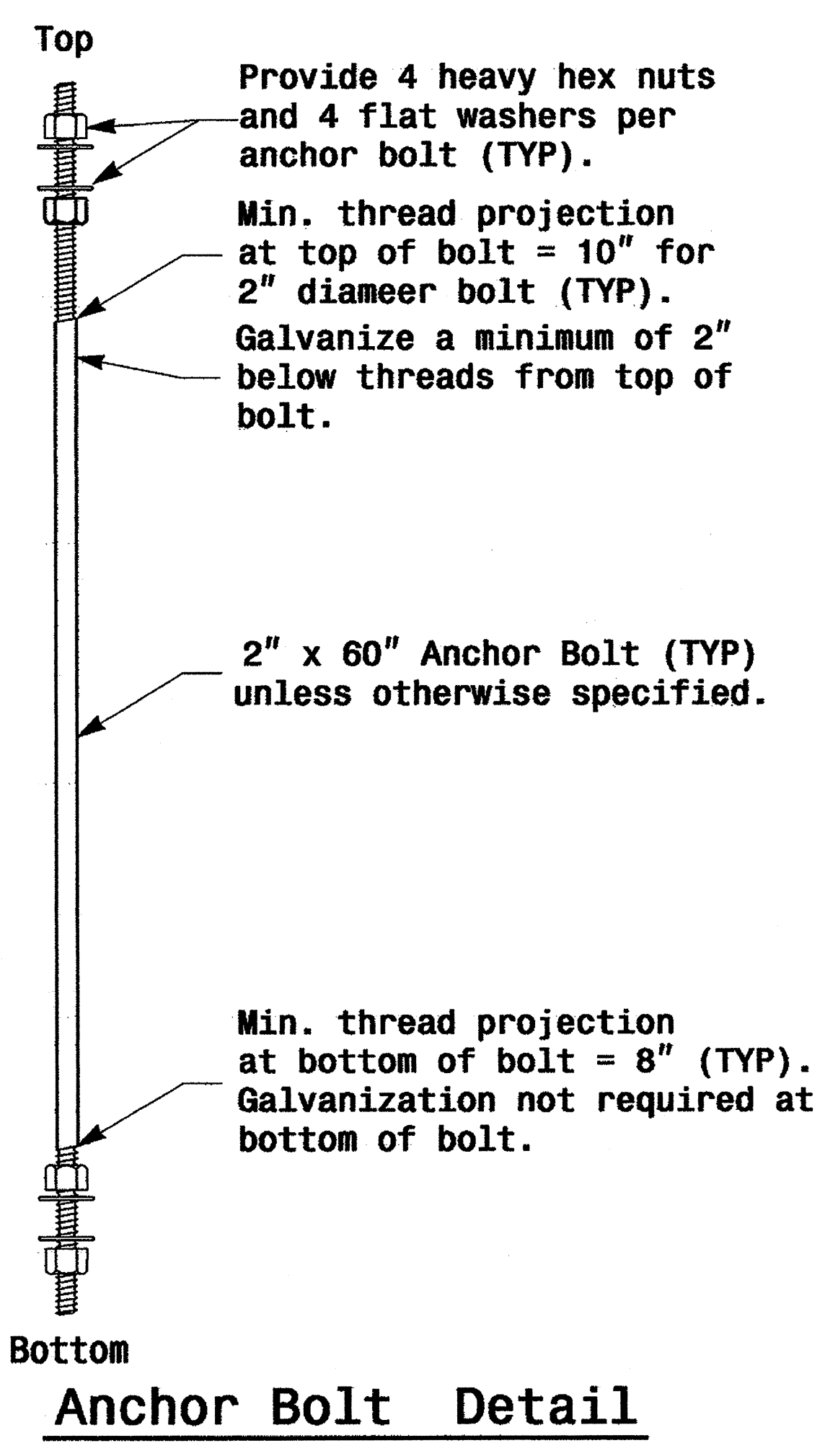
MFG _____ MFG. DATE: MM/YY _____
 SHAFT D/T/L/Y _____
 ARM-A D/T/L/Y _____
 ARM-B D/T/L/Y _____
 A.B. DIA./B.C./L/Y _____
 NCDOT STANDARD _____

Arm I.D. Tag
(Provide on each section of a multi-section mast arm)

MFG _____ MFG. DATE: MM/YY _____
 SECTION D/T/L/Y _____
 NCDOT STANDARD _____

- Notes:**
- 1) D= Diameter, T= Thickness, L= Length, Y= Yield Strength
 - 2) A.B. = Anchor Bolt
 - 3) B.C. = Bolt Circle of Anchor Bolts
 - 4) If Custom Design, use "NCDOT STANDARD" line for plan pole I.D.
 - 5) See drawing M4 for mounting positions of I.D. tags.

Identification Tag Details



Prepared in the Office of:

Typical Fabrication Details Common To All Metal Poles

PLAN DATE: May 2005 REVIEWED BY: C.F. Andrews
 PREPARED BY: P.L. Alexander REVIEWED BY: A.W. Esposito

222 N. McDowell St., Raleigh, NC 27603

SCALE: 0 NA NONE

REVISIONS: _____ INIT. DATE _____

SIGNATURE: *D. Sarker* 9.2.2005 DATE

SIG. INVENTORY NO. _____

Fabrication Details - All Poles

01-SEP-2005 18:22 D:\2004_Metro1_Pole_Standards\04.m2 thru m5.dgn