

STATE OF NORTH CAROLINA
DIVISION OF HIGHWAYS

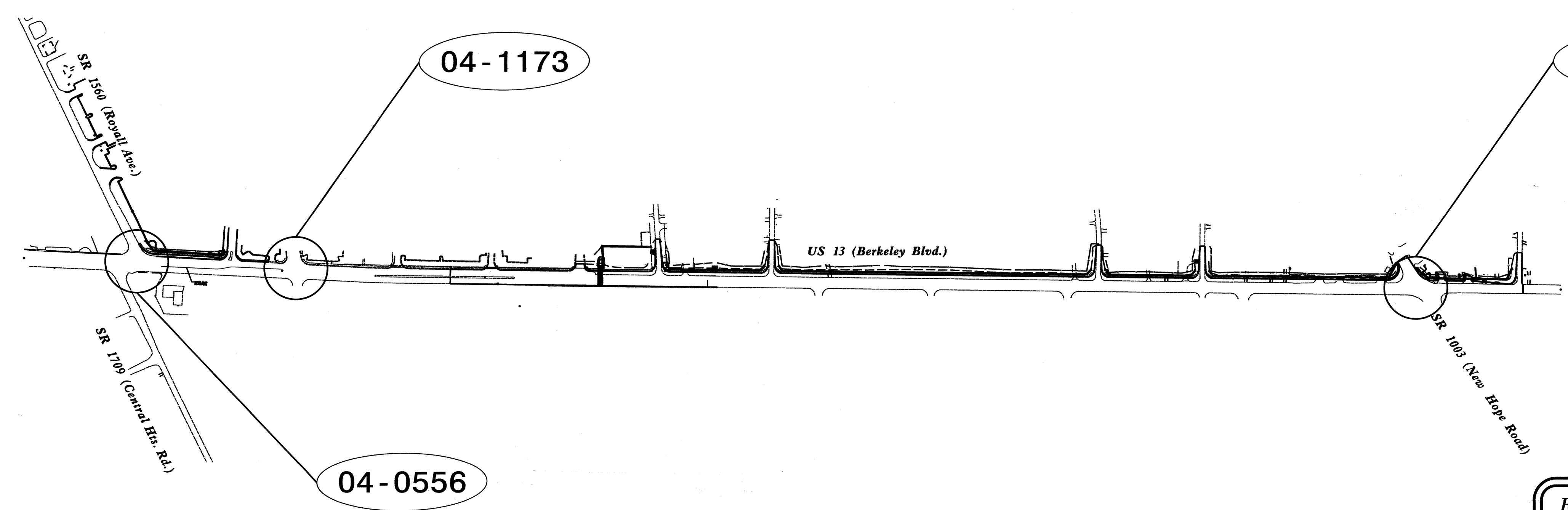
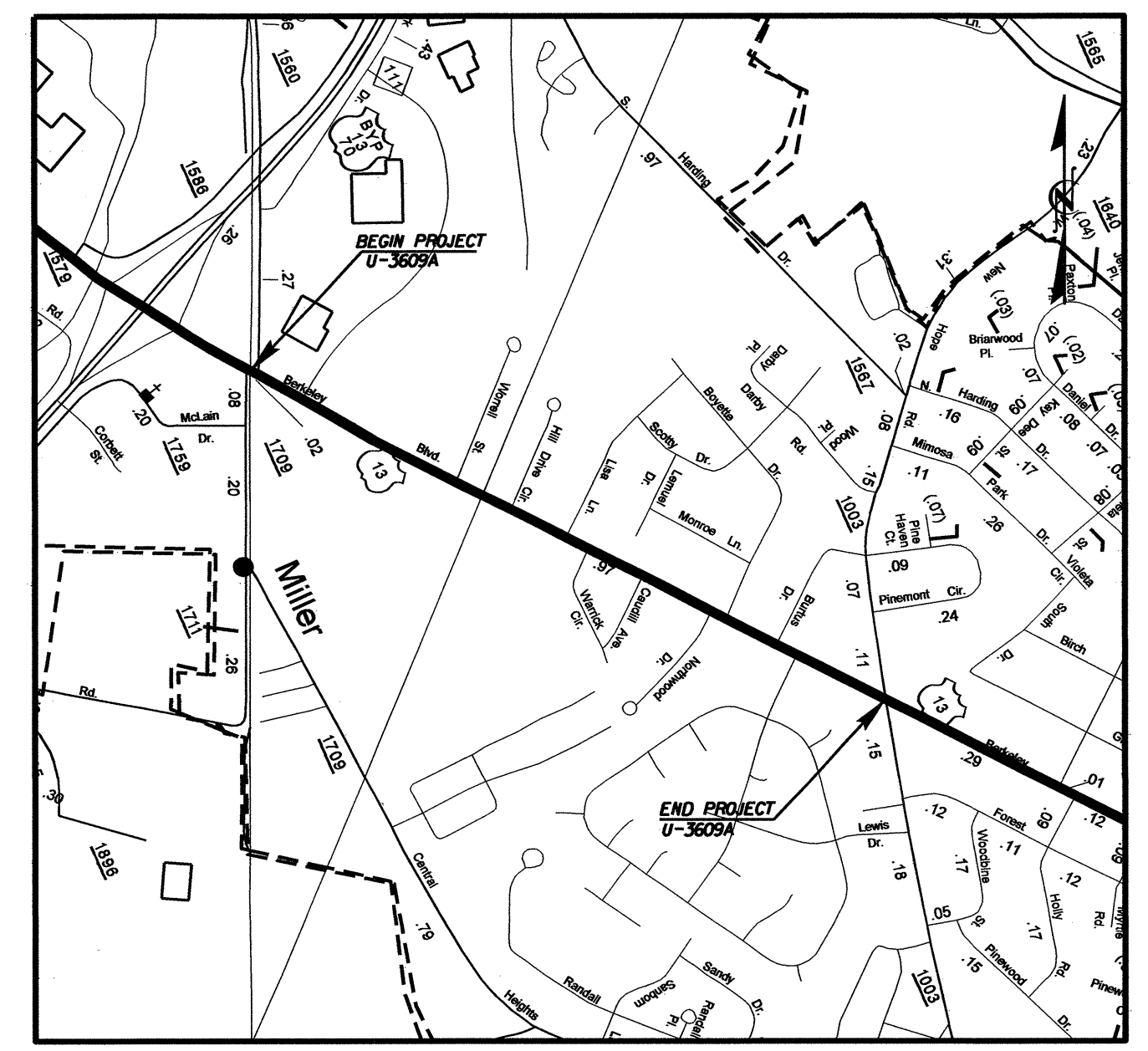
WAYNE COUNTY

**LOCATION: ROYALL AVENUE TO SOUTH DRIVE
GOLDSBORO, NC**

TYPE OF WORK: TRAFFIC SIGNAL

Project: BERKELEY BOULEVARD WIDENING

Vicinity



Refer to "Roadway Standard Drawings NCDOT" dated January 2012 and "Standard Specifications for Roads and Structures" dated January 2012.

Index of Plans

Sheet #	Reference #	Location/Description
Sig. 1		Title Sheet
Sig. 2-4	04-0556	US 13 (Berkeley Blvd.) at SR 1560 (Royall Ave.) & SR 1709 (Central Hts. Rd.)
Sig. 5-7	04-1173	US 13 (Berkeley Boulevard) at Lowe's Drive/Goldsboro Crossing Drive
Sig. 8-11	04-0367	US 13 (Berkeley Boulevard) at SR 1003 (New Hope Road)
Sig. 12-17	N/A	Metal Strain Poles Typicals

INTELLIGENT TRANSPORTATION AND SIGNALS UNIT
Contacts:

Pamela L. Alexander, PE - Eastern Region Signals Engineer
John T. Rowe Jr., PE - Signal Equipment Design Engineer

Prepared in the Office of:
DIVISION OF HIGHWAYS
TRANSPORTATION MOBILITY AND SAFETY
DIVISION

03-MAY-2012 14:20 S:\IT&S\NTS\Signal Design Section\Eastern Region\Div-04\U-3609A\Signals\Design\Titlesheet\U3609A_rdy_tsh.dgn