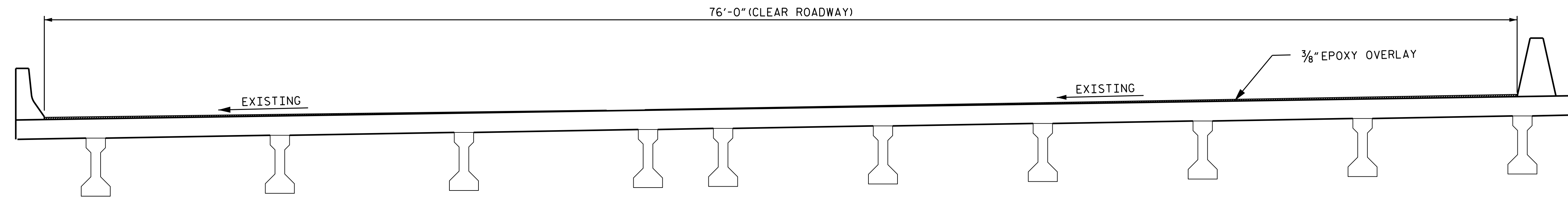
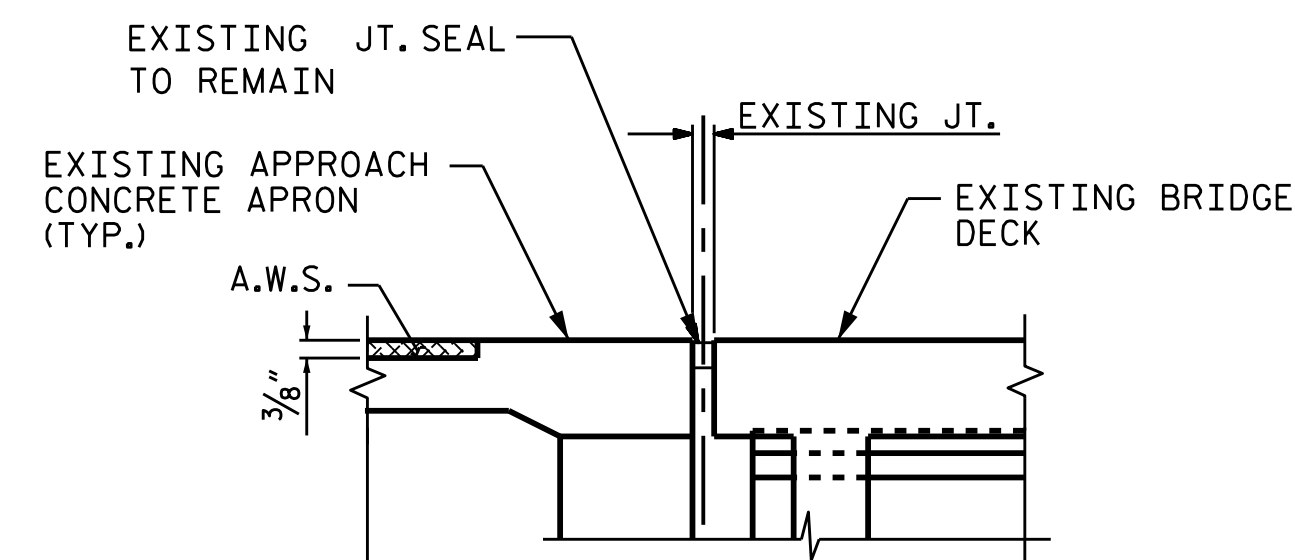


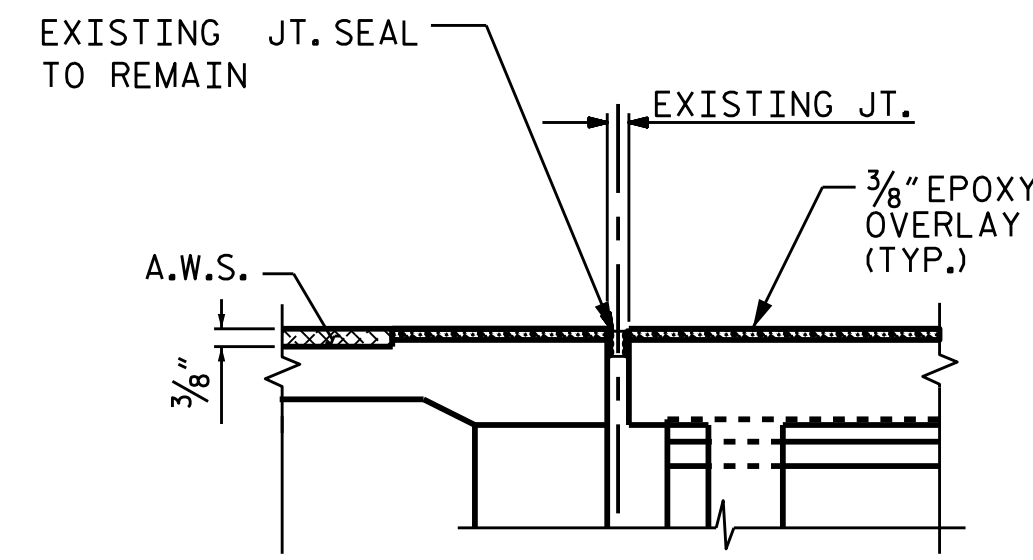
**NOTE:**  
 STAGING OF THE EPOXY OVERLAY SYSTEM IS NOT INDICATED ON STRUCTURE PLANS. IN THE EVENT STAGED CONSTRUCTION IS UTILIZED OR IF LONGITUDINAL JOINTS ARE NECESSARY, LONGITUDINAL CONSTRUCTION JOINTS OF THE EPOXY OVERLAY SYSTEM SHALL BE LOCATED ALONG CENTERLINES OR EDGE OF TRAVEL LANES.



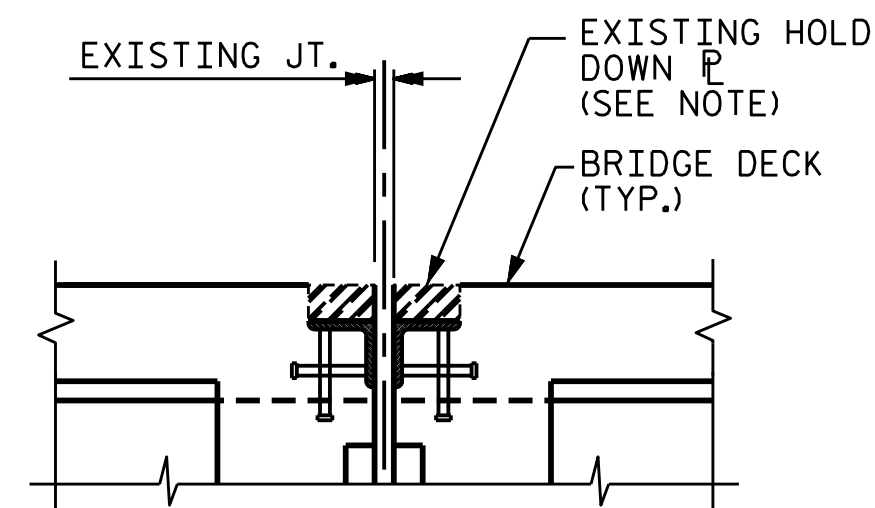
TYPICAL SECTION



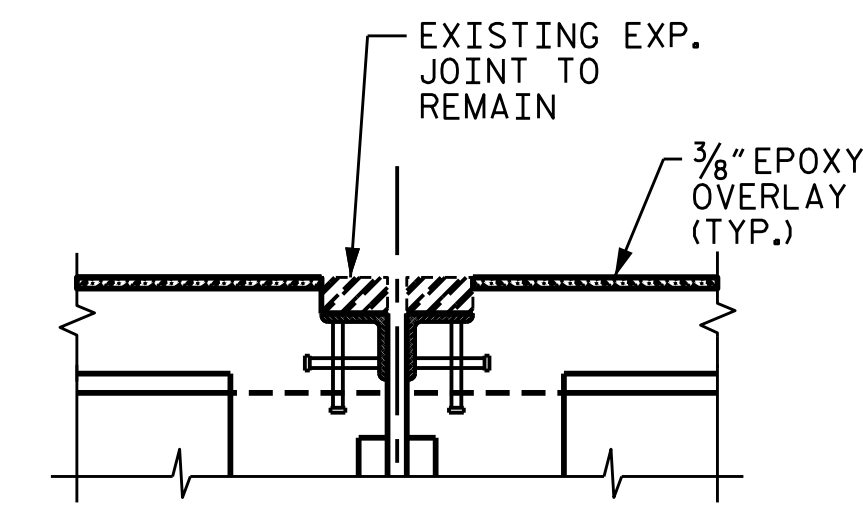
SECTION A-A  
(EXISTING JOINT)



SECTION A-A  
(PROPOSED EPOXY OVERLAY)



SECTION B-B  
(EXISTING JOINT)



SECTION B-B  
(PROPOSED EPOXY OVERLAY)

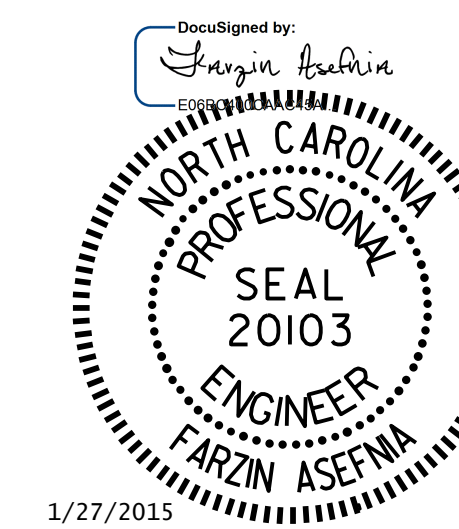
JOINT SEAL DETAILS AT BENT NO. 4 & END BENTS

ALL EXISTING JOINTS TO REMAIN IN PLACE (SEE NOTES.)

PROJECT NO. I-5308  
ROBESON COUNTY  
 BRIDGE NO: 147

STATE OF NORTH CAROLINA  
 DEPARTMENT OF TRANSPORTATION  
 RALEIGH  
 SUPERSTRUCTURE

TYPICAL SECTION  
 AND  
 JOINT DETAILS



DRAWN BY : M. WELDON DATE : 3/2014  
 CHECKED BY : F. ASEFNIA DATE : 3/2014

REVISIONS						SHEET NO.
NO.	BY:	DATE:	NO.	BY:	DATE:	TOTAL SHEETS
1			3			S-23
2			4			23