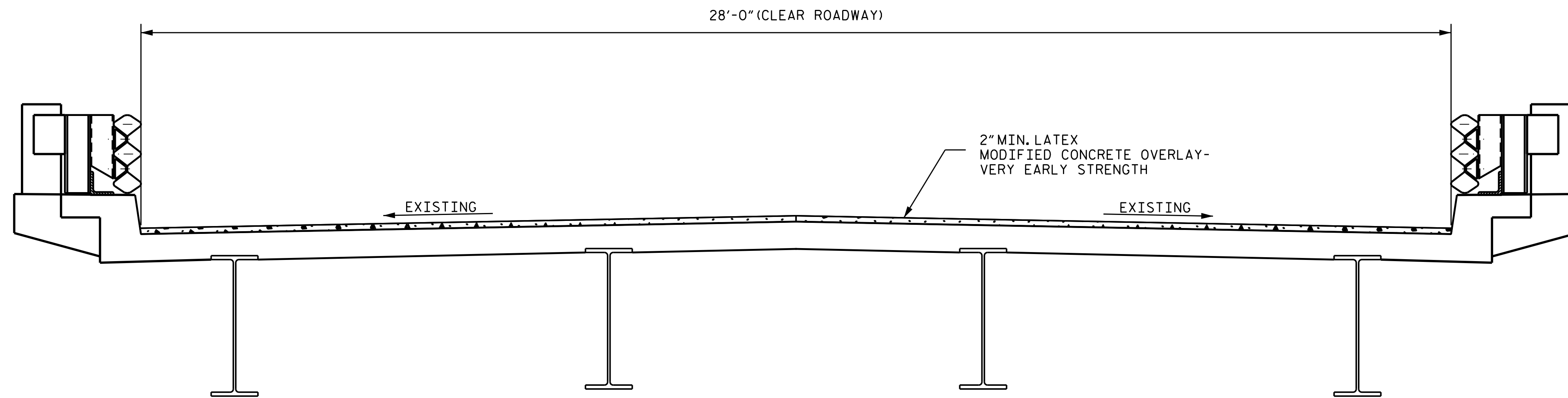
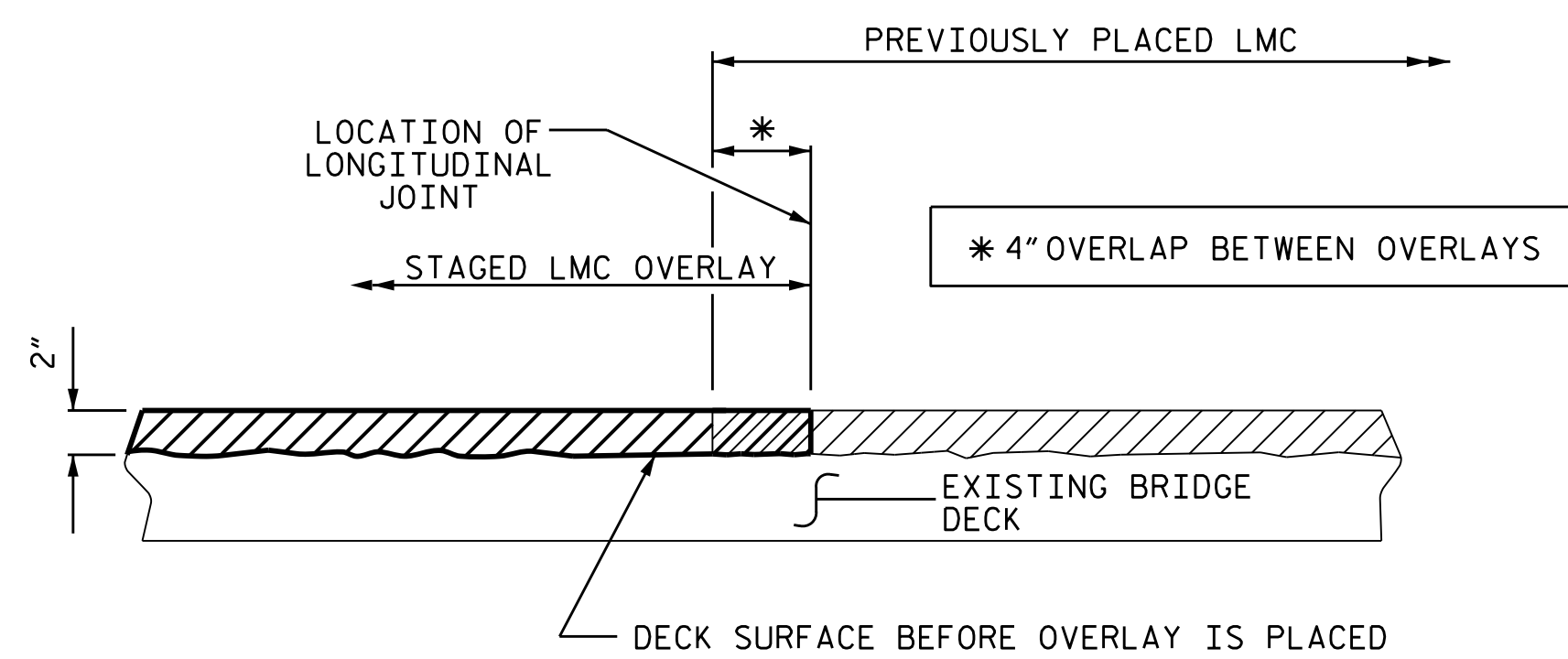


**NOTE:**

STAGING OF LATEX MODIFIED CONCRETE (LMC) OVERLAY-VERY EARLY STRENGTH IS NOT INDICATED ON STRUCTURE PLANS. IN THE EVENT STAGED CONSTRUCTION IS UTILIZED OR IF LONGITUDINAL JOINTS ARE NECESSARY, LONGITUDINAL CONSTRUCTION JOINTS OF LMC-VES SHALL BE LOCATED ALONG CENTERLINE OR EDGE OF TRAVEL LANES. WHEN PREPARING THE SURFACE FOR LMC OVERLAY ADJACENT TO A PREVIOUSLY PLACED LMC STAGE, THE PREVIOUSLY PLACED LMC SHALL BE REMOVED FOR A DISTANCE OF 4-INCHES FROM THE LMC EDGE. THE SURFACE OF THE NEW STAGE AREA, ALONG WITH THE 4 INCH OVERLAY AREA, SHALL BE PREPARED AS PER THE OVERLAY SURFACE PREPARATION SPECIAL PROVISIONS. NEW LMC SHALL BE PLACED IN THE 4-INCH OVERLAP, AS PART OF NEW LMC STAGE PLACEMENT.



**TYPICAL SECTION**

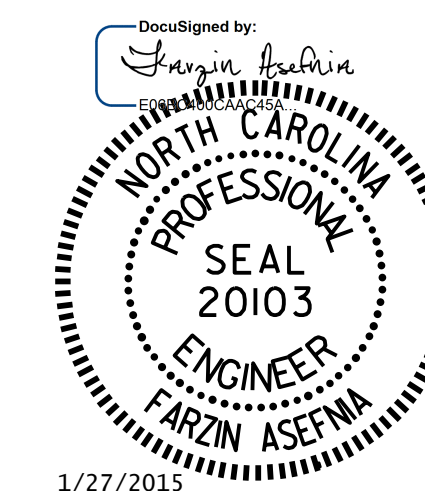


**SECTION THRU DECK  
STAGED LMC OVERLAY JOINT  
(AS NEEDED)**

PROJECT NO. I-5308  
ROBESON COUNTY  
 BRIDGE NO. 144 & 145

STATE OF NORTH CAROLINA  
 DEPARTMENT OF TRANSPORTATION  
 RALEIGH

TYPICAL SECTION &  
 LATEX MODIFIED  
 CONCRETE DETAILS



DRAWN BY : M. WELDON DATE : 4/2014  
 CHECKED BY : F. ASEFNIA DATE : 4/2014

23-JAN-2015 10:21  
 S:\PRS\POC\Squad C\Preservation\_Projects\I-5308\DCN\I5308\_SD.144.145\_TS.DGN  
 fosefnia

REVISIONS						SHEET NO.
NO.	BY:	DATE:	NO.	BY:	DATE:	S-9
1			3			TOTAL SHEETS
2			4			23