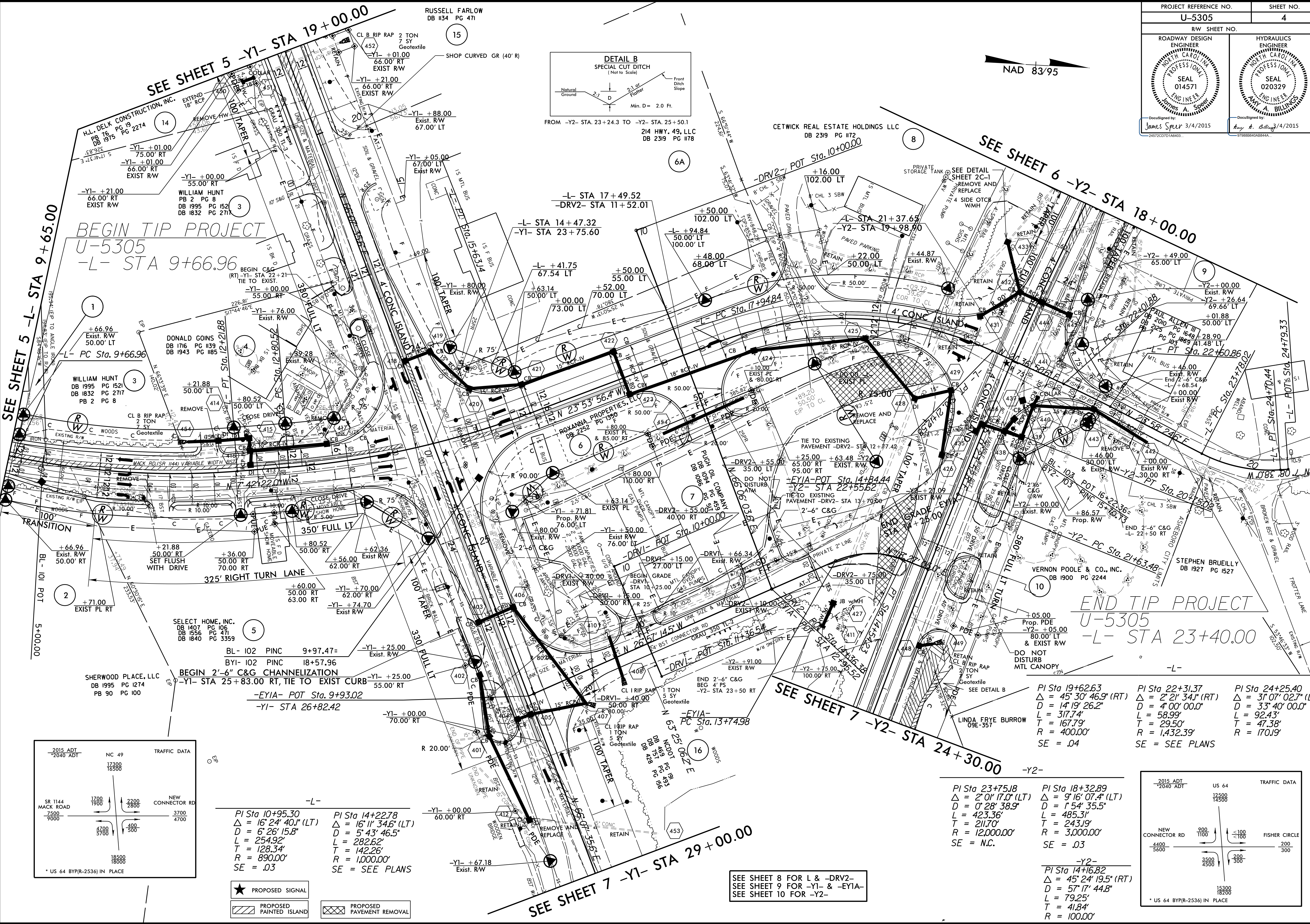
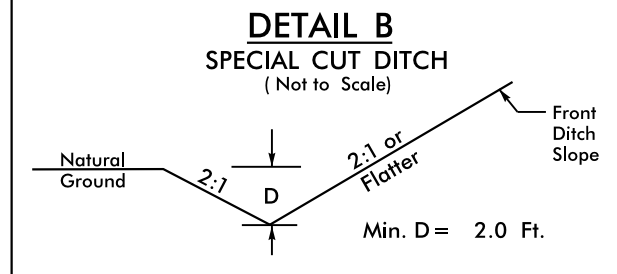
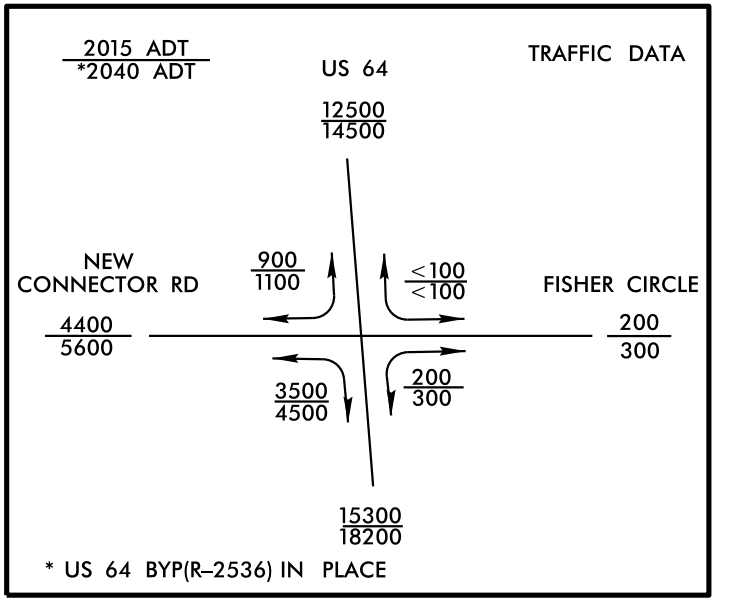
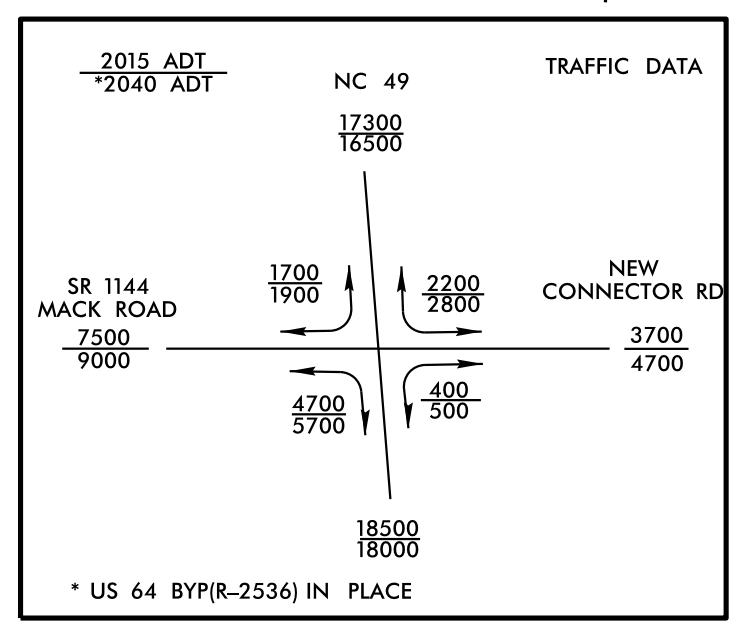


NAD 83/95



BEGIN TIP PROJECT  
U-5305  
-L- STA 9+66.96

END TIP PROJECT  
U-5305  
-L- STA 23+40.00



$PI\ Sta\ 10+95.30$ $\Delta = 16' 24' 40.1'' (LT)$ $D = 6' 26' 15.8''$ $L = 254.92'$ $T = 128.34'$ $R = 890.00'$ $SE = .03$	$PI\ Sta\ 14+22.78$ $\Delta = 16' 11' 34.6'' (LT)$ $D = 5' 43' 46.5''$ $L = 282.62'$ $T = 142.26'$ $R = 1,000.00'$ $SE = SEE\ PLANS$
---	--

$PI\ Sta\ 19+62.63$ $\Delta = 45' 30' 46.9'' (RT)$ $D = 14' 19' 26.2''$ $L = 317.74'$ $T = 167.79'$ $R = 400.00'$ $SE = .04$	$PI\ Sta\ 22+31.37$ $\Delta = 2' 21' 34.1'' (RT)$ $D = 4' 00' 00.0''$ $L = 58.99'$ $T = 29.50'$ $R = 1,432.39'$ $SE = SEE\ PLANS$	$PI\ Sta\ 24+25.40$ $\Delta = 31' 07' 02.7'' (L)$ $D = 33' 40' 00.0''$ $L = 92.43'$ $T = 47.38'$ $R = 170.19'$
$PI\ Sta\ 23+75.18$ $\Delta = 2' 01' 17.0'' (LT)$ $D = 0' 28' 38.9''$ $L = 423.36'$ $T = 211.70'$ $R = 12,000.00'$ $SE = N.C.$	$PI\ Sta\ 18+32.89$ $\Delta = 9' 16' 07.4'' (LT)$ $D = 1' 54' 35.5''$ $L = 485.31'$ $T = 243.19'$ $R = 3,000.00'$ $SE = .03$	$PI\ Sta\ 14+16.82$ $\Delta = 45' 24' 19.5'' (RT)$ $D = 57' 17' 44.8''$ $L = 79.25'$ $T = 41.84'$ $R = 100.00'$

- ★ PROPOSED SIGNAL
- ▨ PROPOSED PAINTED ISLAND
- ▩ PROPOSED PAVEMENT REMOVAL

SEE SHEET 8 FOR L & -DRV2-  
SEE SHEET 9 FOR -Y1- & -EY1A-  
SEE SHEET 10 FOR -Y2-

8/17/99  
94-MAR-2015 08:56 U5305\_RDY\_PSH\_4.dgn  
3:54:58 PM  
US 64 BYP(R-2536) IN PLACE