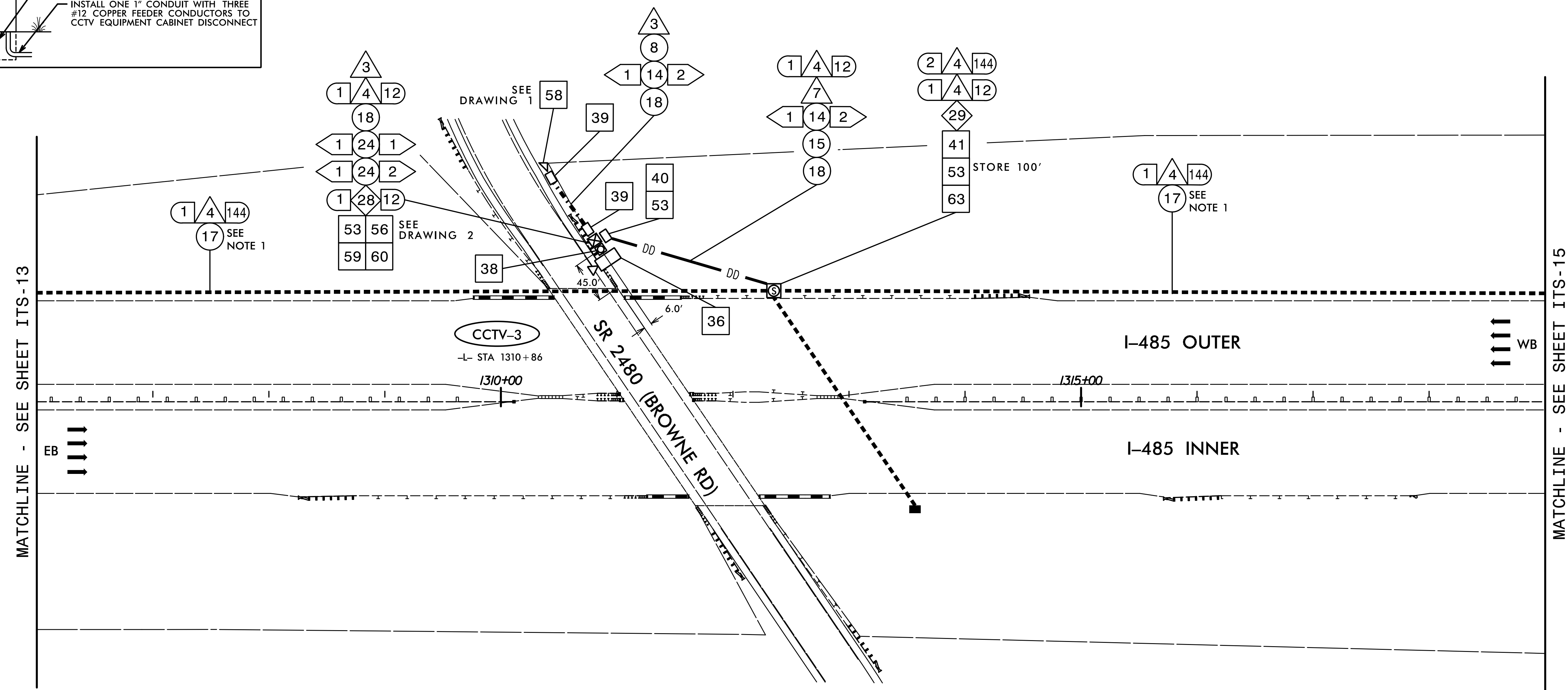
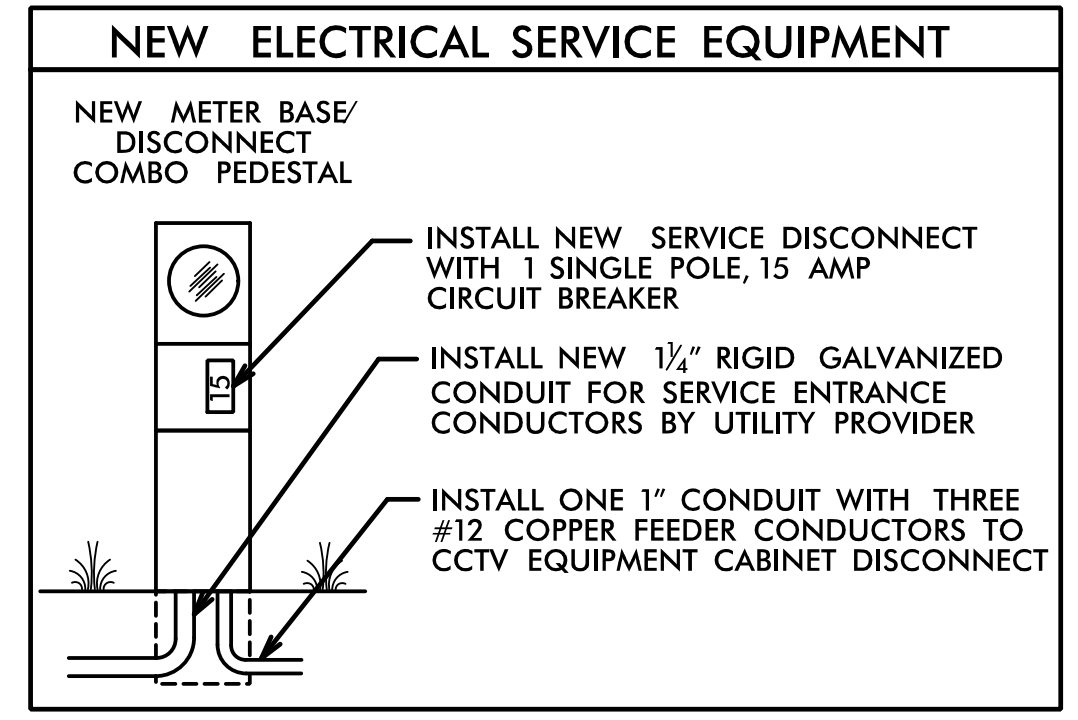


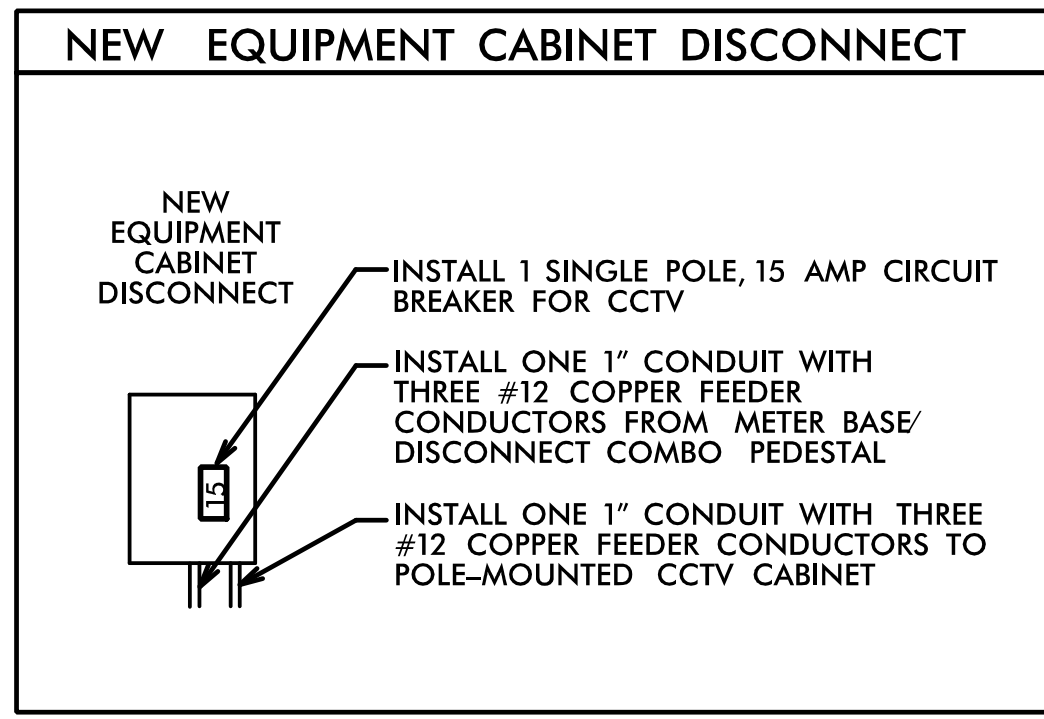
DRAWING 1

CCTV-3 GPS COORDINATES

N 35° 22.072'
W 80° 48.378'



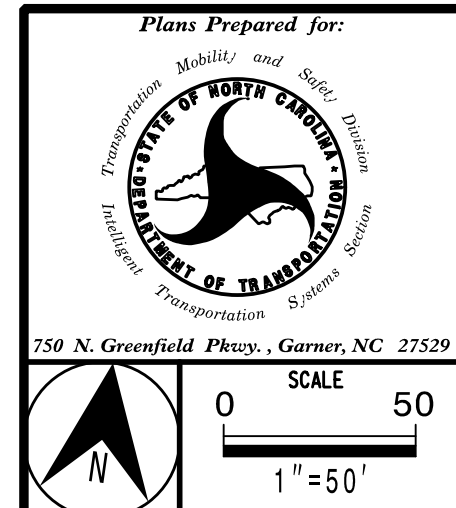
DRAWING 2



- NOTES:
1. INSTALL FIBER-OPTIC CABLE INTO THE EXISTING BLACK DUCT.
 2. CONTACT THE REGIONAL ITS ENGINEER AT (704) 347-6601 TO CONFIRM THE LOCATION OF THE CCTV.
 3. MOUNT THE CCTV CAMERA 45' ABOVE GRADE.
 4. INSTALL A LEVEL CONCRETE TECHNICIAN PAD MEASURING A MINIMUM OF 4 INCHES THICK, 24 INCHES WIDE AND 36 INCHES LONG AT THE FRONT DOOR OF THE CCTV EQUIPMENT CABINET. SEE TYPICAL DETAILS SHEET.
 5. CONTACT TOM EDELEN (DUKE ENERGY) AT (704) 582-8070 TO OBTAIN POWER TO ELECTRICAL SERVICE.

NOTE:
ELECTRICAL SERVICE DETAILS AND CONSTRUCTION METHODS DEPICT FIELD CONDITIONS AT THE TIME OF DESIGN. CONTRACTOR IS TO VERIFY ACTUAL CONDITIONS AT THE TIME OF CONSTRUCTION AND OBTAIN APPROVAL FROM THE ENGINEER PRIOR TO MAKING ANY CHANGES.

HNTB HNTB NORTH CAROLINA, P.C.
343 E. Six Forks Road, Suite 200
Raleigh, North Carolina 27609
NC License No: C-1554



Plans Prepared for:
TRANSPORTATION MOBILITY AND SAFETY DIVISION
DEPARTMENT OF TRANSPORTATION
STATE OF NORTH CAROLINA

250 N. Greenfield Place, Garner, NC 27529

CABLE ROUTING PLAN

DIVISION 10 MECKLENBURG CO. CHARLOTTE

PLAN DATE: FEBRUARY 2015 REVIEWED BY: A.D. KLINSIEK

PREPARED BY: T.R. TERRELL REVIEWED BY: H.L. WINSTEAD

REVISIONS	INIT.	DATE

DocuSigned by:
H.L. Winstead, Jr. 02-04-2015
F42917C6C8D7429
SIGNATURE DATE
CADD File Name: R2248EA ITS-14.dgn

