

PROJECT REFERENCE NO. W-5206AG	SHEET NO. 2B-1
R/W SHEET NO.	
ROADWAY DESIGN ENGINEER	

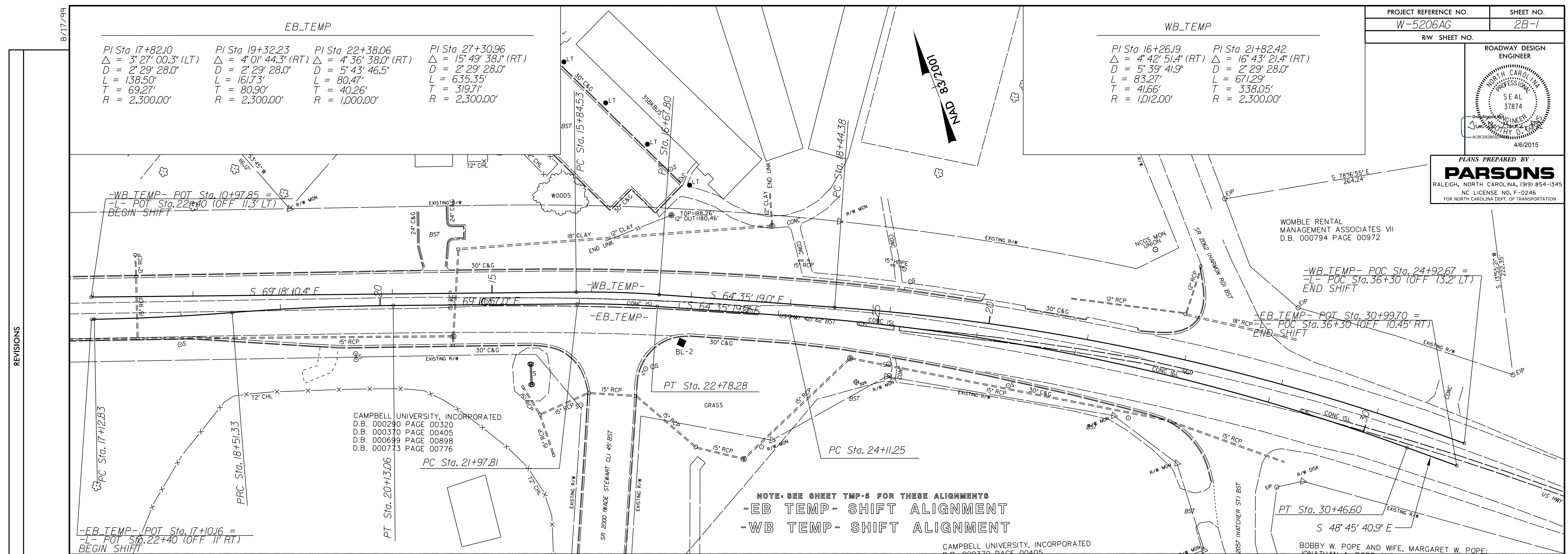
EB_TEMP

PI Sta 17+82.10 Δ = 3° 27' 00.3" (LT) D = 2° 29' 28.0" L = 138.50' T = 69.27' R = 2,300.00'	PI Sta 19+32.23 Δ = 4° 01' 44.3" (RT) D = 2° 29' 28.0" L = 161.73' T = 80.90' R = 2,300.00'	PI Sta 22+38.06 Δ = 4° 36' 38.0" (RT) D = 5° 43' 46.5" L = 80.47' T = 40.26' R = 1,000.00'	PI Sta 27+30.96 Δ = 15° 49' 38.1" (RT) D = 2° 29' 28.0" L = 635.35' T = 319.71' R = 2,300.00'
--	--	---	--

WB_TEMP

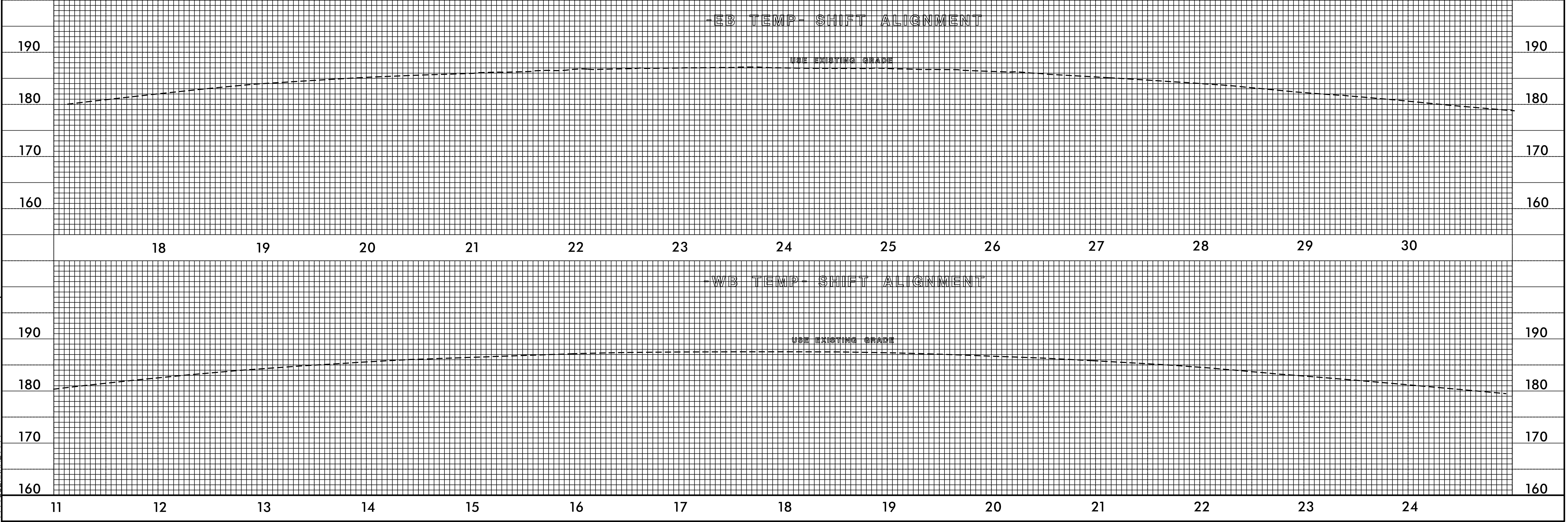
PI Sta 16+26.19 Δ = 4° 42' 51.4" (RT) D = 5° 39' 41.9" L = 83.27' T = 41.66' R = 1,012.00'	PI Sta 21+82.42 Δ = 16° 43' 21.4" (RT) D = 2° 29' 28.0" L = 671.29' T = 338.05' R = 2,300.00'
---	--

PLANS PREPARED BY:
PARSONS
RALEIGH, NORTH CAROLINA, (919) 854-1345
NC LICENSE NO. F-0246
FOR NORTH CAROLINA DEPT. OF TRANSPORTATION



REVISIONS

NOTE: SEE SHEET TMP-5 FOR THESE ALIGNMENTS
-EB TEMP- SHIFT ALIGNMENT
-WB TEMP- SHIFT ALIGNMENT



01-APR-2015 09:38
 J:\W-5206AG\Foodway\PCO\W5206AG_Rdu_PSH_2B-1_DE TOURS.dgn
 \$\$\$USERVALUE\$\$\$