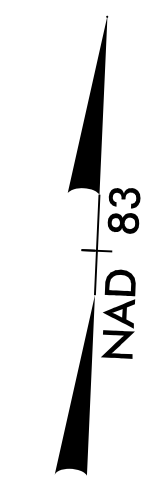
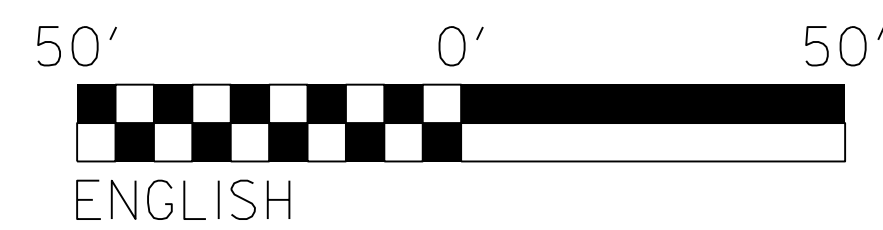


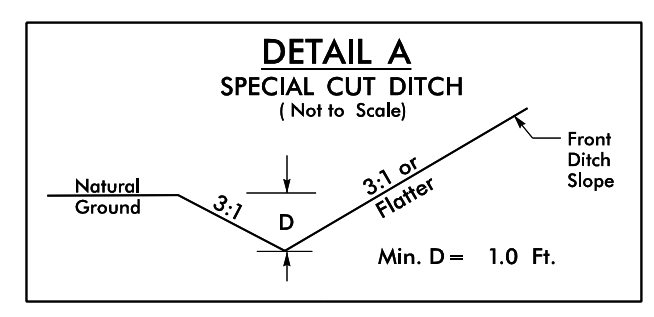
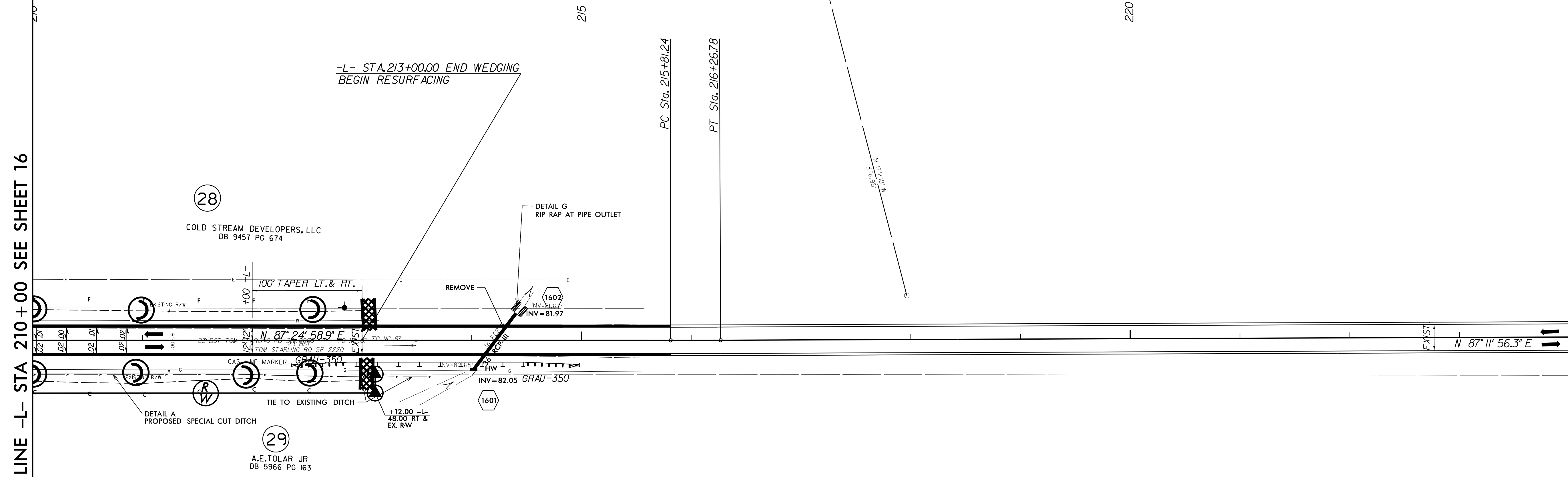
PROJECT REFERENCE NO.	SHEET NO.
W-5512	EC-29/CONST.16
RW SHEET NO.	
ROADWAY DESIGN ENGINEER	HYDRAULICS ENGINEER

NOTES: ANY DEVIATION FROM OPTIONS GIVEN WILL REQUIRE PRIOR APPROVAL BY ENGINEER.  
 ADDITIONAL EROSION CONTROL DEVICES MAY NEED TO BE INSTALLED AS DIRECTED BY THE ENGINEER.

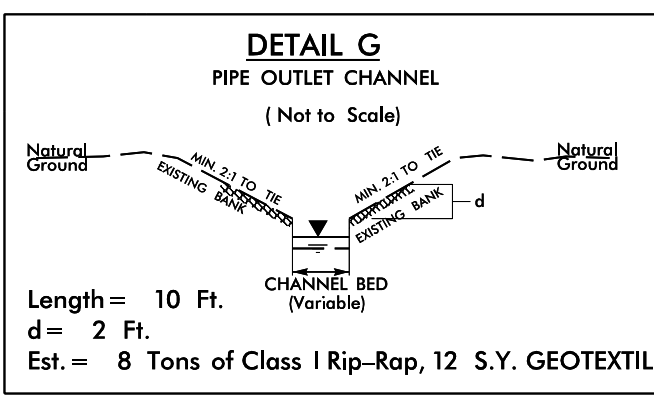
-L-  
 PI Sta 216+04.01  
 $\Delta = 0^{\circ}13'02.6''$  (LT)  
 $D = 0^{\circ}28'38.9''$   
 $L = 45.53'$   
 $T = 22.77'$   
 $R = 12,000.00'$   
 $SE = NC$



MATCH LINE -L- STA 210+00 SEE SHEET 16



FROM STA. 207+50 TO STA. 213+00 -L- RT



STA. 214+22 -L- LT  
 DDE=5 C.Y.

NOTE: SEE SHEET 22 FOR -L- PROFILE

\*NOTE: RESURFACING TO END -L- STA.245+23.91 (SEE T.S.NO.1 SHEET 2)

REVISIONS

65  
64  
63  
62  
61  
60  
59  
58  
57  
56  
55  
54  
53  
52  
51  
50  
49  
48  
47  
46  
45  
44  
43  
42  
41  
40  
39  
38  
37  
36  
35  
34  
33  
32  
31  
30  
29  
28  
27  
26  
25  
24  
23  
22  
21  
20  
19  
18  
17  
16  
15  
14  
13  
12  
11  
10  
9  
8  
7  
6  
5  
4  
3  
2  
1