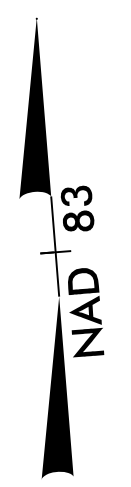
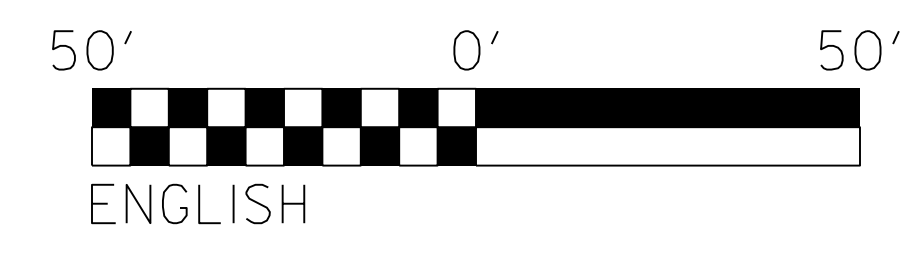
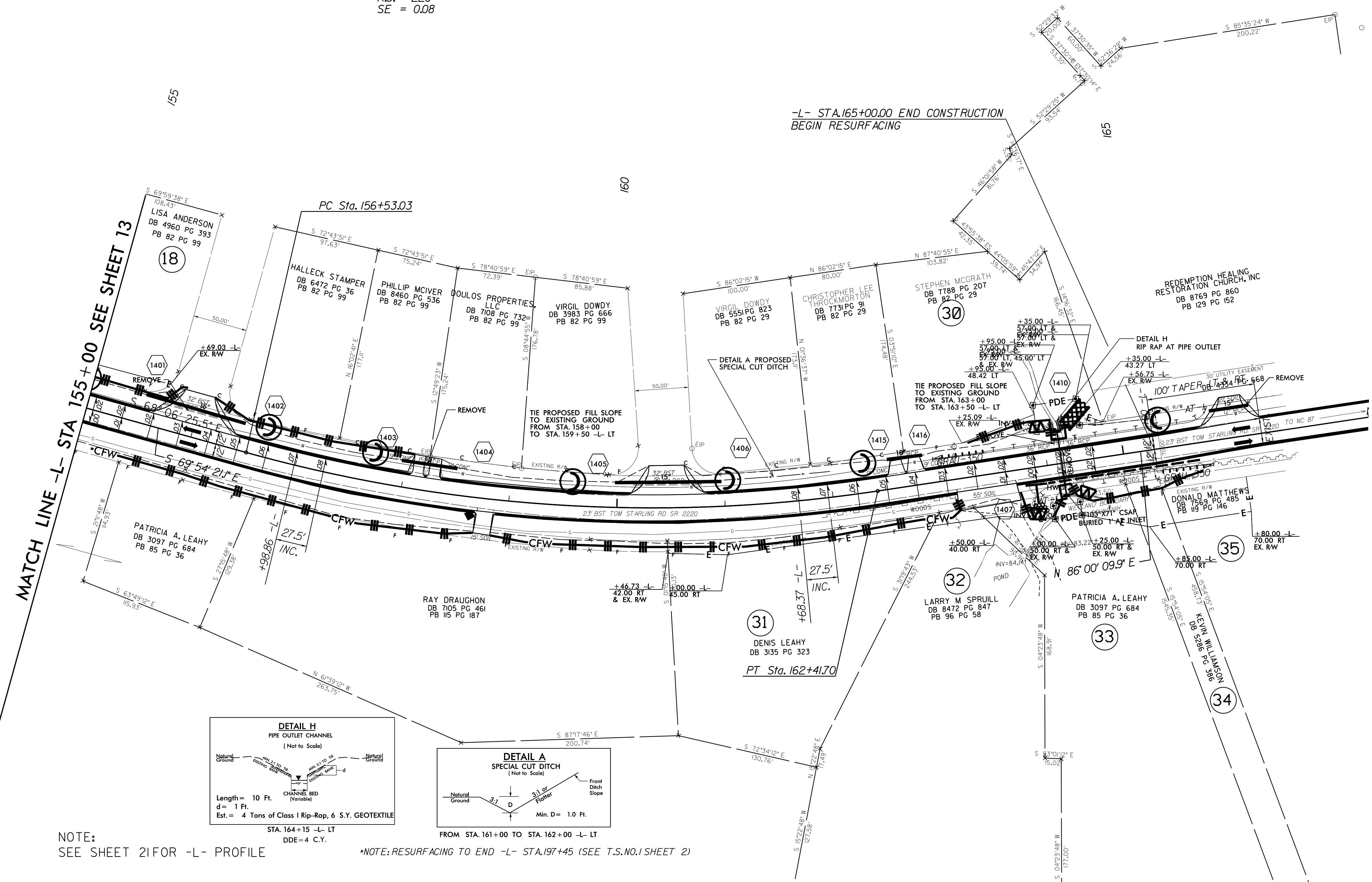


PROJECT REFERENCE NO.	SHEET NO.
W-5512	EC-27/CONST.14
RW SHEET NO.	
ROADWAY DESIGN ENGINEER	HYDRAULICS ENGINEER

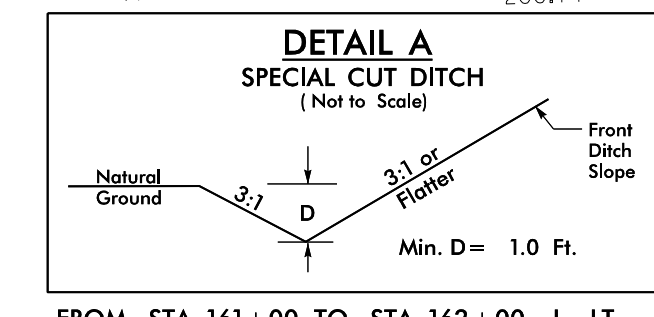
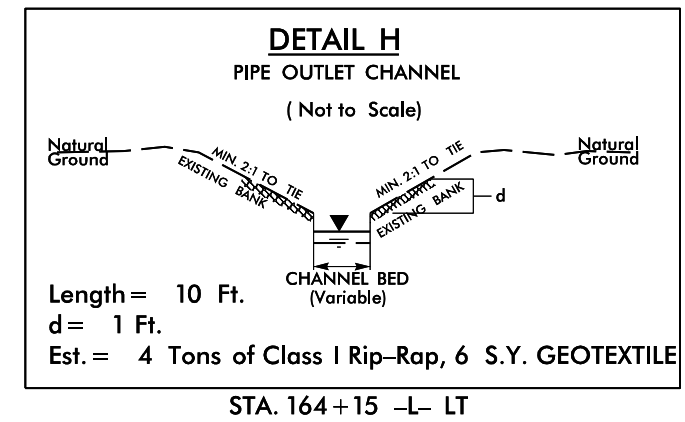
NOTES: ANY DEVIATION FROM OPTIONS GIVEN WILL REQUIRE PRIOR APPROVAL BY ENGINEER.
 ADDITIONAL EROSION CONTROL DEVICES MAY NEED TO BE INSTALLED AS DIRECTED BY THE ENGINEER.



-L-
 PI Sta 159+51.78
 $\Delta = 24^{\circ}05'29.0''$ (LT)
 $D = 4^{\circ}05'33.2''$
 $L = 588.66'$
 $T = 298.75'$
 $R = 1,400.00'$
 $R.O. = 220'$
 $SE = 0.08$



MATCH LINE -L- STA 155+00 SEE SHEET 13



NOTE: SEE SHEET 21 FOR -L- PROFILE

*NOTE: RESURFACING TO END -L- STA.197+45 (SEE T.S.NO.1 SHEET 2)

REVISIONS

8.17.99