

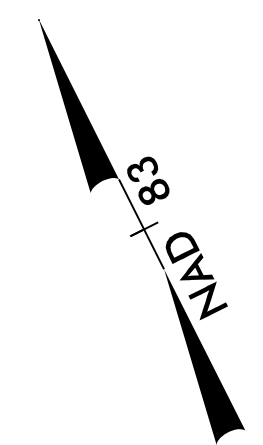
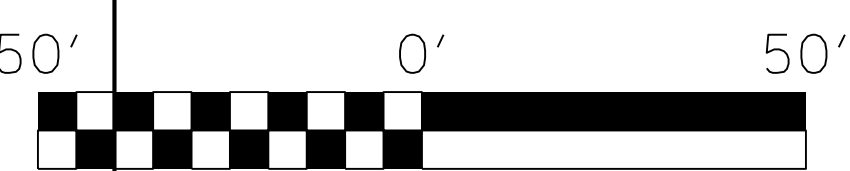
PROJECT REFERENCE NO.	SHEET NO.
W-5512	EC-07/CONST.07
RW SHEET NO.	
ROADWAY DESIGN ENGINEER	HYDRAULICS ENGINEER

NOTES: ANY DEVIATION FROM OPTIONS GIVEN WILL REQUIRE PRIOR APPROVAL BY ENGINEER.  
 ADDITIONAL EROSION CONTROL DEVICES MAY NEED TO BE INSTALLED AS DIRECTED BY THE ENGINEER.

NOTE: PLACE TEMPORARY ROCK SEDIMENT DAMS TYPE - B AND TEMPORARY ROCK SILT CHECKS TYPE - A AT DRAINAGE OUTLETS.

CLEARING AND GRUBBING EROSION CONTROL FOR CONSTRUCTION SHEET 07

-L-  
 PI Sta 62+83.16  
 $\Delta = 34^{\circ} 55' 46.1''$  (RT)  
 $D = 4^{\circ} 46' 28.7''$   
 $L = 731.56'$   
 $T = 377.55'$   
 $R = 1,200.00'$   
 $R.O. = 220'$   
 $SE = 0.08$

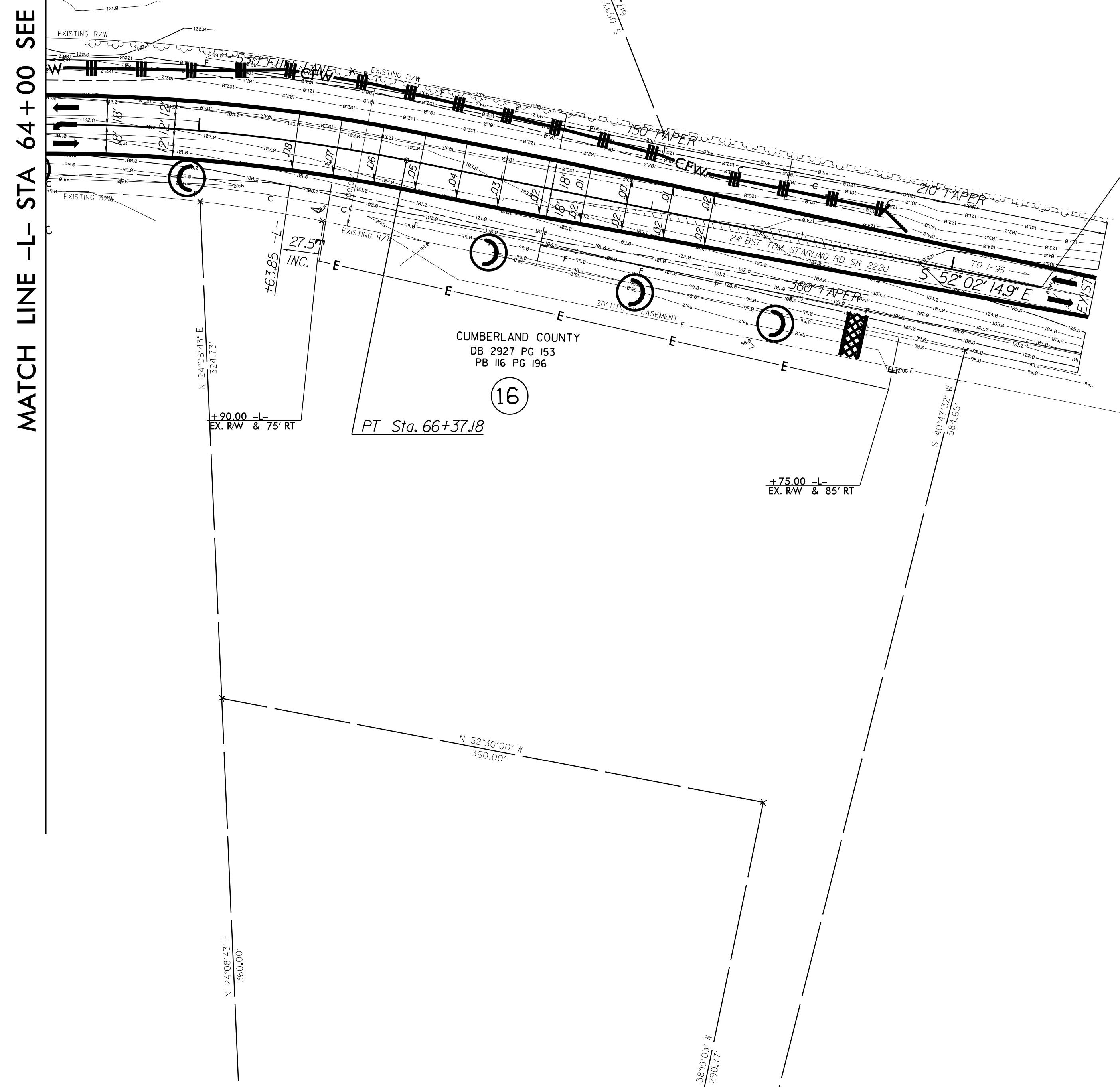


ENGLISH

MATCH LINE -L- STA 64+00 SEE SHEET 6

5  
 WASTE MANAGEMENT OF THE CAROLINAS, INC  
 DB 5585 PG 359

-L- STA.70+60 END WEDGING BEGIN RESURFACING



MATCH LINE -L- STA 77+00 SEE SHEET 8

REVISIONS

\*NOTE: RESURFACING TO END -L- STA.84+95.14 (SEE T.S.NO.1 SHEET 2)

NOTE: SEE SHEET 18 FOR -L- PROFILE