

09/08/99

See Sheet UO-2 For Index of Sheets
See Sheet UO-3 For Conventional Symbols

STATE OF NORTH CAROLINA
DIVISION OF HIGHWAYS

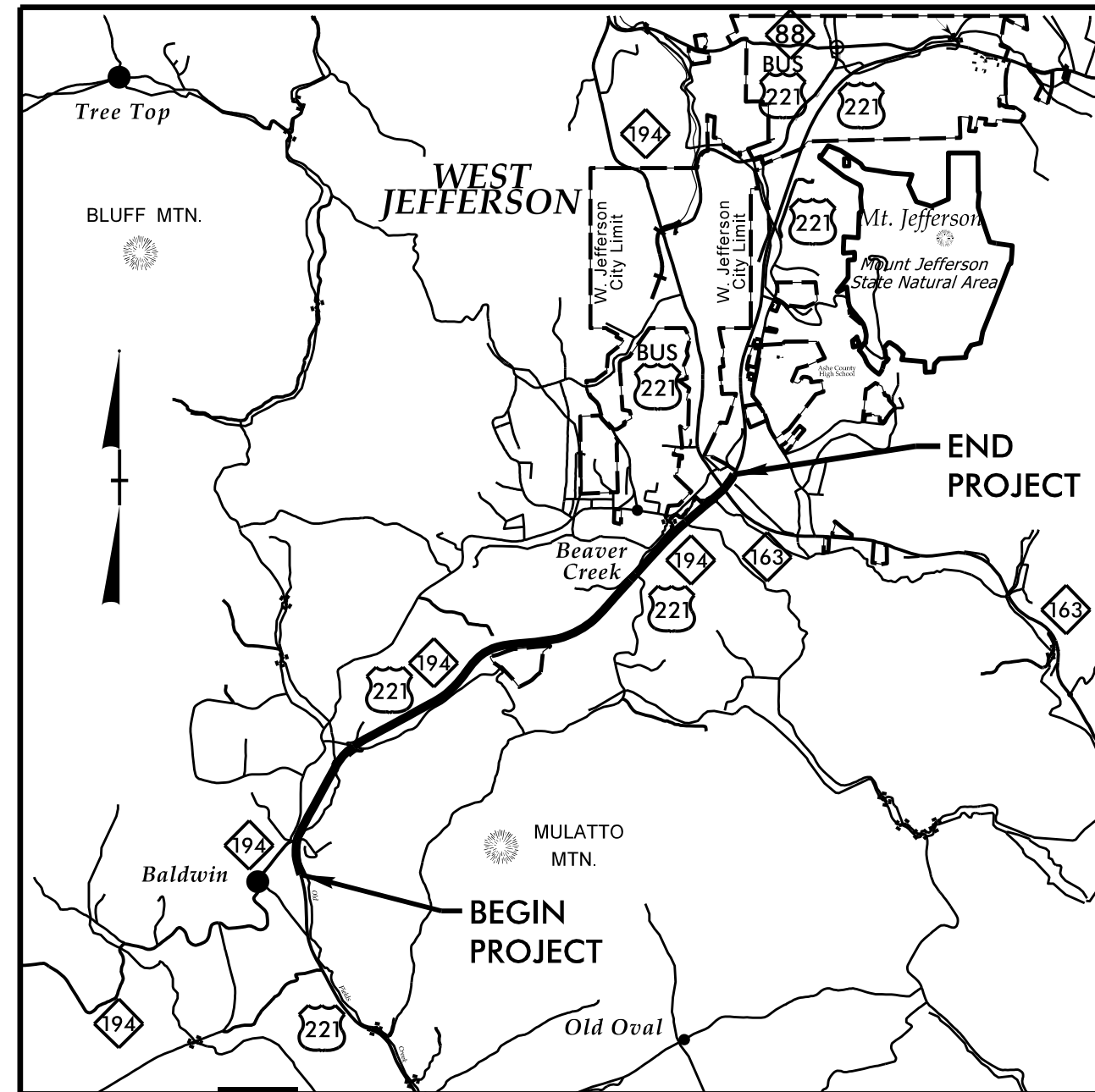
T.I.P. NO.	SHEET NO.
R-2915D	UO-01

UTILITIES BY OTHERS ASHE COUNTY

LOCATION: US 221 FROM SOUTH OF NC 194
TO US 221 BYPASS

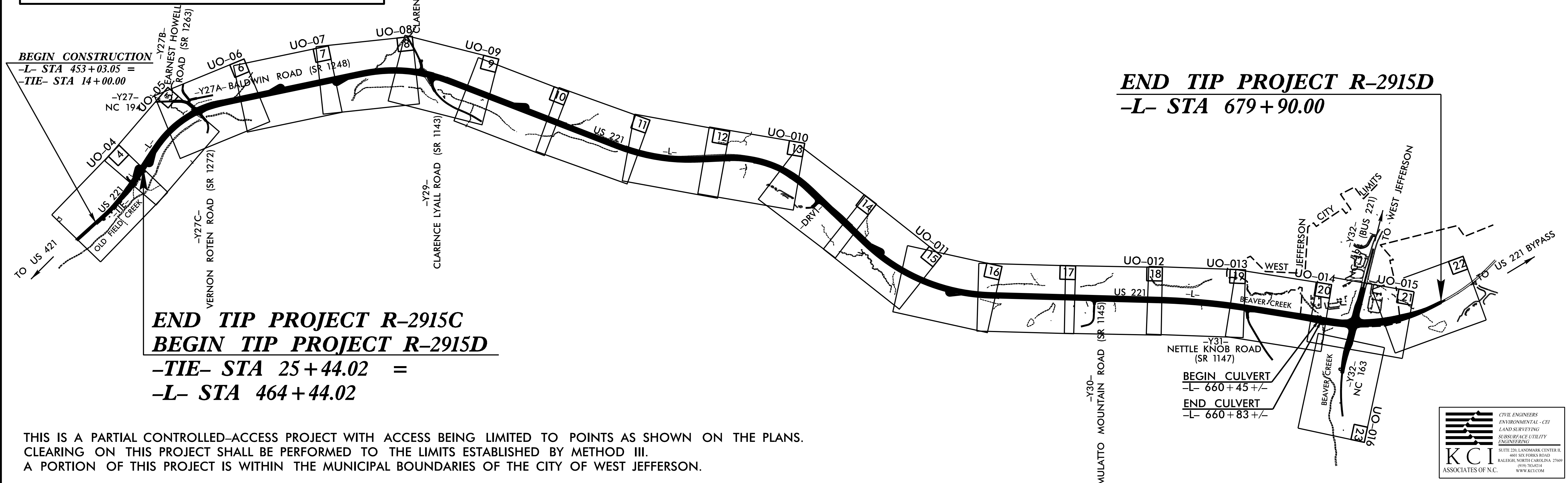
TYPE OF WORK: OVERHEAD AND UNDERGROUND
POWER & TELECOMMUNICATIONS RELOCATION

TIP PROJECT: R-2915D



VICINITY MAP

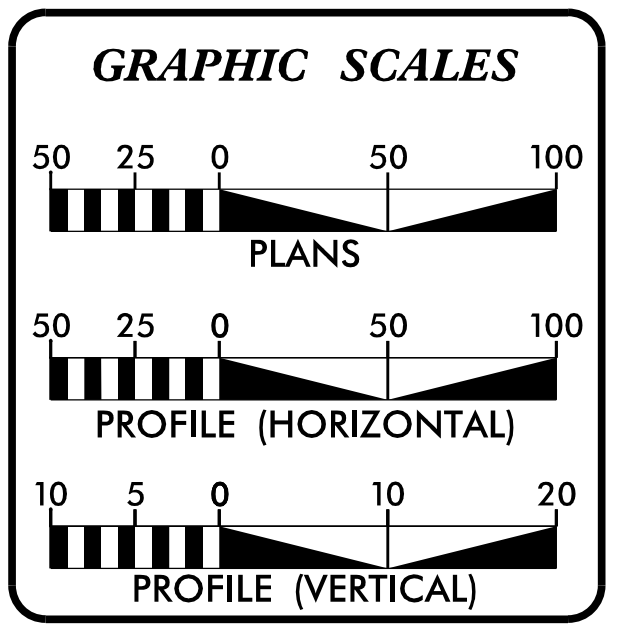
ROW PLANS



END TIP PROJECT R-2915D
-L- STA 679+90.00

END TIP PROJECT R-2915C
BEGIN TIP PROJECT R-2915D
-TIE- STA 25+44.02 =
-L- STA 464+44.02

THIS IS A PARTIAL CONTROLLED-ACCESS PROJECT WITH ACCESS BEING LIMITED TO POINTS AS SHOWN ON THE PLANS.
CLEARING ON THIS PROJECT SHALL BE PERFORMED TO THE LIMITS ESTABLISHED BY METHOD III.
A PORTION OF THIS PROJECT IS WITHIN THE MUNICIPAL BOUNDARIES OF THE CITY OF WEST JEFFERSON.



SHEET NO.	DESCRIPTION
UO-01	TITLE SHEET
UO-02	GENERAL NOTES
UO-03	CONVENTIONAL PLAN SHEET SYMBOLS
UO-04 THRU UO-016	UTILITIES BY OTHERS PLAN SHEETS

UTILITY OWNERS ON PROJECT	
(A)	BREMCO - POWER (DISTRIBUTION)
(B)	BREMCO - POWER (TRANSMISSION)
(C)	SKYLINE SKYBEST (COMMUNICATIONS)
(D)	MORRIS BROADBAND - (COMMUNICATIONS)
(E)	FRONTIER NATURAL GAS - (GAS DISTRIBUTION)
(F)	CENTURY LINK - (COMMUNICATIONS)

PREPARED IN THE OFFICE OF:
DIVISION OF HIGHWAYS
UTILITIES UNIT
UTILITIES ENGINEERING SECTION

1555 MAIL SERVICES CENTER
RALEIGH, NC 27699-1555
PHONE (919) 707-6690
FAX (919) 250-4119

Roger Worthington, P.E. UTILITIES SECTION ENGINEER
Carl Barclay, P.E. UTILITIES SQUAD LEADER PROJECT ENGINEER
James Swinson UTILITIES PROJECT DESIGNER

\$\$\$\$\$ SYSTEM \$\$\$\$\$\$
\$\$\$\$\$ DGN \$\$\$\$\$\$
\$\$\$\$\$ USERNAME \$\$\$\$\$\$




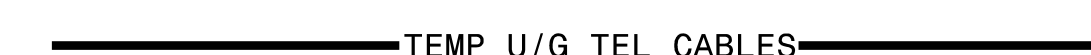
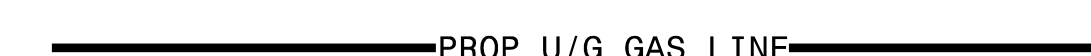

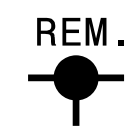
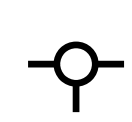
INDEX OF SHEETS

SHEET NUMBER	SHEET
U0-01	TITLE SHEET
U0-02	INDEX OF SHEETS, STANDARD DRAWINGS, GENERAL NOTES
U0-03	CONVENTIONAL PLAN SHEET SYMBOLS
U0-04 THRU U0-016	UBO PLAN SHEETS

UTILITY CONTACTS

UTILITY	CONTACT NAME	CONTACT PHONE NUMBER
BLUE RIDGE ELECTRIC	WARD PRESTWOOD	(828)-758-2383 EXT. 3275
SKYLINE TELEPHONE	BRANDON MILLER	(336)-977-1633
CENTURY LINK	KENT CARLSON	(828)-697-5009
MORRIS BROADBAND	STEVE SHORT	(828)-772-1175
FRONTIER NATURAL GAS	GARY MOORE	(336)-526-1780

LEGEND

	PROP O/H POW LINES (TRANS)	PROPOSED OVERHEAD POWER TRANSMISSION LINE
	PROP O/H TEL & CATV LINES	PROPOSED OVERHEAD CATV & TELEPHONE CABLES
	PROP U/G TEL CABLES	PROPOSED UNDERGROUND TELEPHONE CABLES
	TEMP U/G TEL CABLES	TEMPORARY UNDERGROUND TELEPHONE CABLES
	PROP U/G GAS LINE	PROPOSED GAS LINE
	ABANDON	EXISTING UTILITY TO BE ABANDONED IN PLACE (BY CORRESPONDING UTILITY COMPANY)
	REM.	EXISTING UTILITY POLE TO BE REMOVED (BY CORRESPONDING UTILITY COMPANY)
		PROPOSED UTILITY POLE (BY CORRESPONDING UTILITY COMPANY)

STATE OF NORTH CAROLINA
DIVISION OF HIGHWAYS

CONVENTIONAL PLAN SHEET SYMBOLS

Note: Not to Scale

*S.U.E. = Subsurface Utility Engineering

BOUNDARIES AND PROPERTY:

State Line	-----
County Line	-----
Township Line	-----
City Line	-----
Reservation Line	-----
Property Line	-----
Existing Iron Pin	○ EP
Property Corner	-----
Property Monument	□ ECM
Parcel/Sequence Number	⑫③
Existing Fence Line	-x-x-x-
Proposed Woven Wire Fence	○
Proposed Chain Link Fence	□
Proposed Barbed Wire Fence	◇
Existing Wetland Boundary	---WLB---
Proposed Wetland Boundary	---WLB---
Existing Endangered Animal Boundary	---EAB---
Existing Endangered Plant Boundary	---EPB---
Known Soil Contamination: Area or Site	☠ ☠
Potential Soil Contamination: Area or Site	☠ ☠

BUILDINGS AND OTHER CULTURE:

Gas Pump Vent or U/G Tank Cap	○
Sign	○ S
Well	○ W
Small Mine	✕
Foundation	□
Area Outline	□
Cemetery	†
Building	□
School	□
Church	□
Dam	□

HYDROLOGY:

Stream or Body of Water	-----
Hydro, Pool or Reservoir	□
Jurisdictional Stream	---JS---
Buffer Zone 1	---BZ 1---
Buffer Zone 2	---BZ 2---
Flow Arrow	←
Disappearing Stream	→
Spring	○
Wetland	---WLB---
Proposed Lateral, Tail, Head Ditch	---FD---
False Sump	▽

RAILROADS:

Standard Gauge	-----
RR Signal Milepost	○
Switch	□
RR Abandoned	-----
RR Dismantled	-----

RIGHT OF WAY:

Baseline Control Point	◆
Existing Right of Way Marker	△
Existing Right of Way Line	-----
Proposed Right of Way Line	-----
Proposed Right of Way Line with Iron Pin and Cap Marker	-----
Proposed Right of Way Line with Concrete or Granite RW Marker	-----
Proposed Control of Access Line with Concrete CA Marker	-----
Existing Control of Access	-----
Proposed Control of Access	-----
Existing Easement Line	-----
Proposed Temporary Construction Easement	-----
Proposed Temporary Drainage Easement	-----
Proposed Permanent Drainage Easement	-----
Proposed Permanent Drainage / Utility Easement	-----
Proposed Permanent Utility Easement	-----
Proposed Temporary Utility Easement	-----
Proposed Aerial Utility Easement	-----
Proposed Permanent Easement with Iron Pin and Cap Marker	-----

ROADS AND RELATED FEATURES:

Existing Edge of Pavement	-----
Existing Curb	-----
Proposed Slope Stakes Cut	-----
Proposed Slope Stakes Fill	-----
Proposed Curb Ramp	-----
Existing Metal Guardrail	-----
Proposed Guardrail	-----
Existing Cable Guiderail	-----
Proposed Cable Guiderail	-----
Equality Symbol	⊕
Pavement Removal	-----

VEGETATION:

Single Tree	☼
Single Shrub	☼
Hedge	-----
Woods Line	-----

Orchard	☼ ☼ ☼ ☼
Vineyard	□

EXISTING STRUCTURES:

MAJOR:	
Bridge, Tunnel or Box Culvert	-----
Bridge Wing Wall, Head Wall and End Wall	-----
MINOR:	
Head and End Wall	-----
Pipe Culvert	-----
Footbridge	-----
Drainage Box: Catch Basin, DI or JB	□ CB
Paved Ditch Gutter	-----
Storm Sewer Manhole	⊙
Storm Sewer	-----

UTILITIES:

POWER:	
Existing Power Pole	●
Proposed Power Pole	○
Existing Joint Use Pole	●
Proposed Joint Use Pole	○
Power Manhole	⊙
Power Line Tower	⊠
Power Transformer	⊠
U/G Power Cable Hand Hole	□
H-Frame Pole	●
Recorded U/G Power Line	-----
Designated U/G Power Line (S.U.E.*)	-----

TELEPHONE:

Existing Telephone Pole	●
Proposed Telephone Pole	○
Telephone Manhole	⊙
Telephone Booth	□
Telephone Pedestal	⊠
Telephone Cell Tower	⊠
U/G Telephone Cable Hand Hole	□
Recorded U/G Telephone Cable	-----
Designated U/G Telephone Cable (S.U.E.*)	-----
Recorded U/G Telephone Conduit	-----
Designated U/G Telephone Conduit (S.U.E.*)	-----
Recorded U/G Fiber Optics Cable	-----
Designated U/G Fiber Optics Cable (S.U.E.*)	-----

WATER:

Water Manhole	⊙
Water Meter	○
Water Valve	⊗
Water Hydrant	⊕
Recorded U/G Water Line	-----
Designated U/G Water Line (S.U.E.*)	-----
Above Ground Water Line	-----

TV:

TV Satellite Dish	☼
TV Pedestal	□
TV Tower	⊗
U/G TV Cable Hand Hole	□
Recorded U/G TV Cable	-----
Designated U/G TV Cable (S.U.E.*)	-----
Recorded U/G Fiber Optic Cable	-----
Designated U/G Fiber Optic Cable (S.U.E.*)	-----

GAS:

Gas Valve	◇
Gas Meter	⊕
Recorded U/G Gas Line	-----
Designated U/G Gas Line (S.U.E.*)	-----
Above Ground Gas Line	-----

SANITARY SEWER:

Sanitary Sewer Manhole	⊙
Sanitary Sewer Cleanout	⊕
U/G Sanitary Sewer Line	-----
Above Ground Sanitary Sewer	-----
Recorded SS Forced Main Line	-----
Designated SS Forced Main Line (S.U.E.*)	-----

MISCELLANEOUS:

Utility Pole	●
Utility Pole with Base	□
Utility Located Object	○
Utility Traffic Signal Box	⊠
Utility Unknown U/G Line	-----
U/G Tank; Water, Gas, Oil	□
Underground Storage Tank, Approx. Loc.	⊕
A/G Tank; Water, Gas, Oil	□
Geoenvironmental Boring	⊕
U/G Test Hole (S.U.E.*)	⊕
Abandoned According to Utility Records	AATUR
End of Information	E.O.I.

UTILITY BY OTHERS

NOTE: ALL PROPOSED UTILITY WORK SHOWN ON THIS SHEET WILL BE DONE BY OTHERS. NO PAYMENT WILL BE MADE TO THE CONTRACTOR FOR PROPOSED UTILITY WORK SHOWN ON THIS SHEET.

Pls Sta 447+18.53 $\Theta_s = 3'13"22.4"$ $L_s = 270.00'$ $LT = 180.03'$ $ST = 90.03'$	Pls Sta 455+79.18 $\Theta_s = 2'37"33.8"$ $L_s = 275.00'$ $LT = 183.35'$ $ST = 91.69'$	Pls Sta 459+20.50 $\Delta = 9'30"53.1" (LT)$ $D = 1'54"35.5"$ $L = 498.19'$ $T = 249.67'$ $R = 3,000.00'$ $SE = 0.05$ RUNOFF = 275'	Pls Sta 462+60.70 $\Theta_s = 2'37"33.8"$ $L_s = 275.00'$ $LT = 183.35'$ $ST = 91.69'$
--	--	--	--

PROPOSED UNDERGROUND TELEPHONE CABLES TO BE INSTALLED WITH A MINIMUM OF 2' OF COVER FROM PROPOSED STORM DRAIN AND DRIVEWAY

NAD 83 CORRS



Pls Sta 15+86.98 $\Theta_s = 2'37"33.8"$ $L_s = 275.00'$ $LT = 183.35'$ $ST = 91.69'$	Pls Sta 19+28.30 $\Delta = 9'30"53.1" (LT)$ $D = 1'54"35.5"$ $L = 498.19'$ $T = 249.67'$ $R = 3,000.00'$ $SE = 0.05$ RUNOFF = 275'	Pls Sta 22+68.50 $\Theta_s = 2'37"33.8"$ $L_s = 275.00'$ $LT = 183.35'$ $ST = 91.69'$
---	---	---

PI Sta 10+20.18 $\Delta = 40'52"27.5" (RT)$ $D = 190'59"09.4"$ $L = 21.40'$ $T = 11.18'$ $R = 30.00'$	PI Sta 10+48.84 $\Delta = 40'29"32.5" (LT)$ $D = 114'35"29.6"$ $L = 35.34'$ $T = 18.44'$ $R = 50.00'$
--	--

MATCH LINE -L- STA. 462 + 50
SEE SHEET UO-05

REVISIONS

8/17/99
5/6/26 AY
R-2915D ut_cd14_U004_rsh.dgn
Tosho Barber Division 2007 11/11/11 Services File

KCI ASSOCIATES OF N.C.

CIVIL ENGINEERS
ENVIRONMENTAL - CEI
LAND SURVEYING
SUBSURFACE UTILITY ENGINEERING

SUITE 220, LANDMARK CENTER II,
4601 SIX FORKS ROAD
RALEIGH, NORTH CAROLINA 27609
(919) 785-9214
WWW.KCI.COM

UTILITY BY OTHERS

NOTE:
 ALL PROPOSED UTILITY WORK SHOWN ON THIS SHEET WILL BE DONE BY OTHERS. NO PAYMENT WILL BE MADE TO THE CONTRACTOR FOR PROPOSED UTILITY WORK SHOWN ON THIS SHEET.

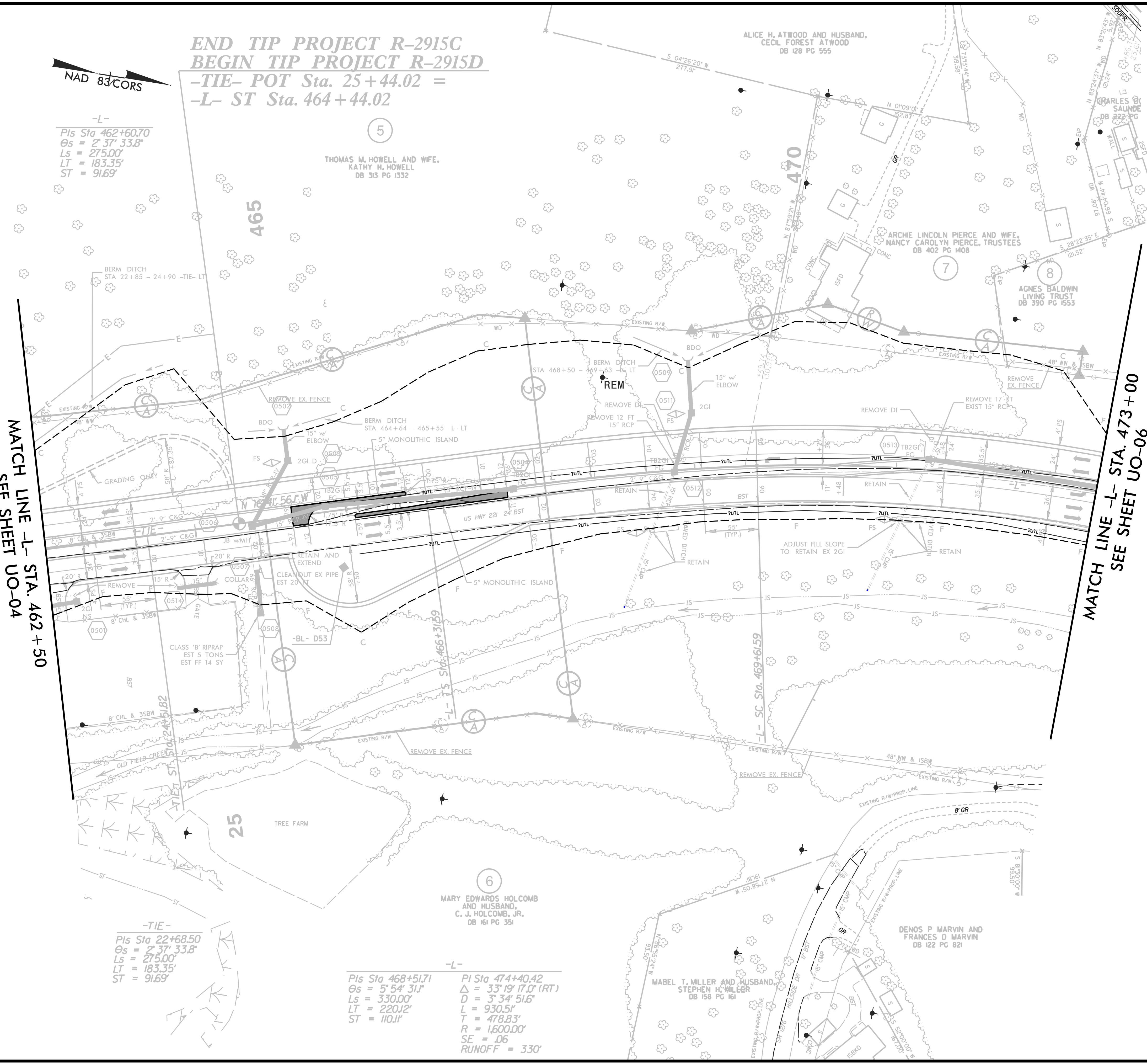
END TIP PROJECT R-2915C
 BEGIN TIP PROJECT R-2915D
 -TIE- POT Sta. 25+44.02 =
 -L- ST Sta. 464+44.02

-L-
 Pts Sta 462+60.70
 $\Theta_s = 2^\circ 37' 33.8''$
 Ls = 275.00'
 LT = 183.35'
 ST = 91.69'

MATCH LINE -L- STA. 462+50
 SEE SHEET UO-04

MATCH LINE -L- STA. 473+00
 SEE SHEET UO-06

8/17/99
 REVISIONS
 5/16/18 AM
 R-2915D ut_rdu5_u005_psh.dgn
 Tasha Barber, Division 2007, Utilities Services Group



THOMAS M. HOWELL AND WIFE,
 KATHY H. HOWELL
 DB 315 PG 1332

ALICE H. ATWOOD AND HUSBAND,
 CECIL FOREST ATWOOD
 DB 128 PG 555

ARCHIE LINCOLN PIERCE AND WIFE,
 NANCY CAROLYN PIERCE, TRUSTEES
 DB 402 PG 1408

AGNES BALDWIN
 LIVING TRUST
 DB 390 PG 1553

MARY EDWARDS HOLCOMB
 AND HUSBAND,
 C. J. HOLCOMB, JR.
 DB 161 PG 351

DENOS P. MARVIN AND
 FRANCES D. MARVIN
 DB 122 PG 821

MABEL T. MILLER AND HUSBAND,
 STEPHEN H. MILLER
 DB 158 PG 161

-TIE-
 Pts Sta 22+68.50
 $\Theta_s = 2^\circ 37' 33.8''$
 Ls = 275.00'
 LT = 183.35'
 ST = 91.69'

-L-
 Pts Sta 468+51.71
 $\Theta_s = 5^\circ 54' 31.1''$
 Ls = 330.00'
 LT = 220.12'
 ST = 110.11'

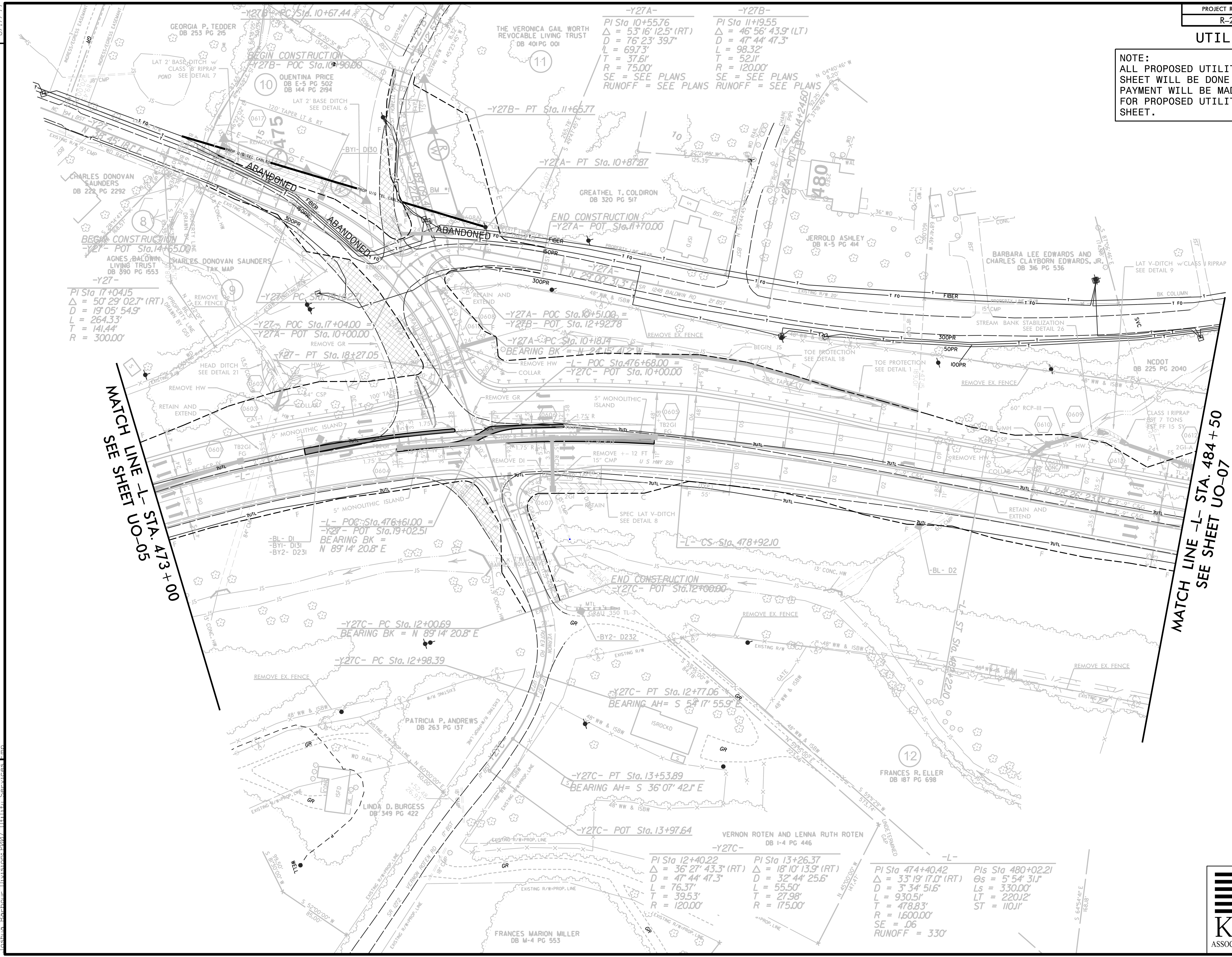
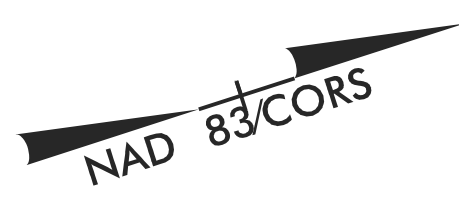
Pts Sta 474+40.42
 $\Delta = 33^\circ 19' 17.0''$ (RT)
 D = 3' 34' 51.6"
 L = 930.51'
 T = 478.83'
 R = 1,600.00'
 SE = .06
 RUNOFF = 330'

CIVIL ENGINEERS
 ENVIRONMENTAL - CEI
 LAND SURVEYING
 SUBSURFACE UTILITY
 ENGINEERING

SUITE 220, LANDMARK CENTER II,
 4601 SIX FORKS ROAD
 RALEIGH, NORTH CAROLINA 27609
 (919) 785-9214
 WWW.KCI.COM

UTILITY BY OTHERS

NOTE:
 ALL PROPOSED UTILITY WORK SHOWN ON THIS SHEET WILL BE DONE BY OTHERS. NO PAYMENT WILL BE MADE TO THE CONTRACTOR FOR PROPOSED UTILITY WORK SHOWN ON THIS SHEET.



PI Sta 17+04.15
 $\Delta = 50^{\circ} 29' 02.7''$ (RT)
 $D = 19^{\circ} 05' 54.9''$
 $L = 264.33'$
 $T = 141.44'$
 $R = 300.00'$

-Y27A-
 PI Sta 10+55.76
 $\Delta = 53^{\circ} 16' 12.5''$ (RT)
 $D = 76^{\circ} 23' 39.7''$
 $L = 69.73'$
 $T = 37.61'$
 $R = 75.00'$
 SE = SEE PLANS
 RUNOFF = SEE PLANS

-Y27B-
 PI Sta 11+9.55
 $\Delta = 46^{\circ} 56' 43.9''$ (LT)
 $D = 47^{\circ} 44' 47.3''$
 $L = 98.32'$
 $T = 52.11'$
 $R = 120.00'$
 SE = SEE PLANS
 RUNOFF = SEE PLANS

-L- POC Sta. 476+61.00 =
 -Y27- POT Sta. 19+02.51
 BEARING BK =
 $N 89^{\circ} 14' 20.8'' E$

-Y27C- PC Sta. 12+00.69
 BEARING BK = $N 89^{\circ} 14' 20.8'' E$

-Y27C- PC Sta. 12+98.39

-Y27C- PT Sta. 12+77.06
 BEARING AH = $S 53^{\circ} 17' 55.9'' E$

-Y27C- PT Sta. 13+53.89
 BEARING AH = $S 36^{\circ} 07' 42.1'' E$

-Y27C- POT Sta. 13+97.64

-Y27C-
 PI Sta 12+40.22
 $\Delta = 36^{\circ} 27' 43.3''$ (RT)
 $D = 47^{\circ} 44' 47.3''$
 $L = 76.37'$
 $T = 39.53'$
 $R = 120.00'$

-Y27C-
 PI Sta 13+26.37
 $\Delta = 18^{\circ} 10' 13.9''$ (RT)
 $D = 32^{\circ} 44' 25.6''$
 $L = 55.50'$
 $T = 27.98'$
 $R = 175.00'$

-L-
 PI Sta 474+40.42
 $\Delta = 33^{\circ} 19' 17.0''$ (RT)
 $D = 3^{\circ} 34' 51.6''$
 $L = 930.51'$
 $T = 478.83'$
 $R = 1600.00'$
 SE = .06
 RUNOFF = 330'

PIs Sta 480+02.21
 $\Delta s = 5^{\circ} 54' 31.1''$
 $L s = 330.00'$
 $LT = 220.12'$
 $ST = 110.11'$

MATCH LINE -L- STA. 473+00
 SEE SHEET UO-05

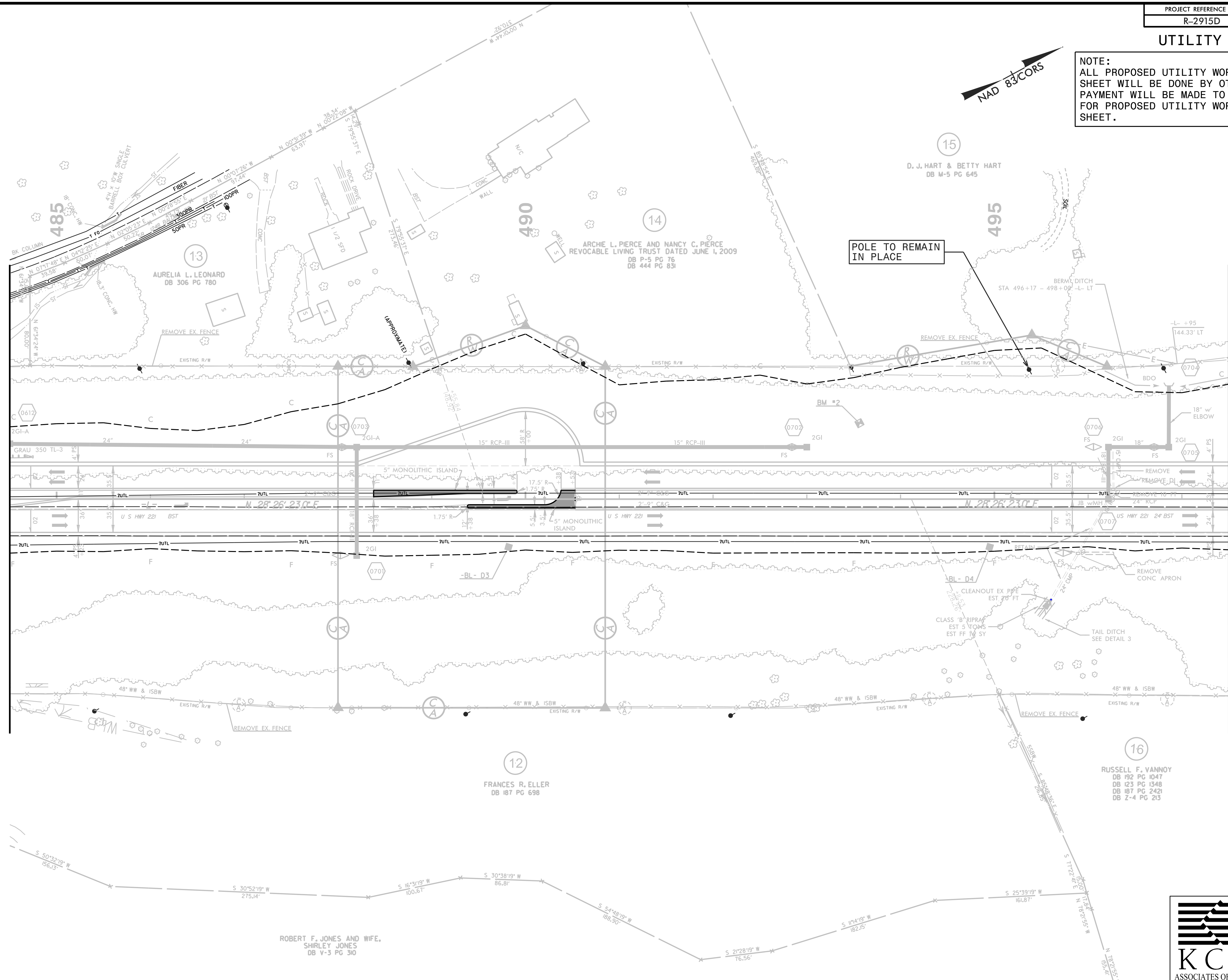
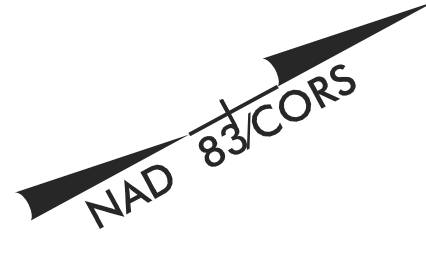
MATCH LINE -L- STA. 484+50
 SEE SHEET UO-07

REVISIONS

8/17/99
 5/17/03 AM R-2915D ut_r.dwg U006_psh.dgn
 5/17/06 R-2915D ut_r.dwg U006_psh.dgn
 Joshua Barber, Division 2007, 11/11/11, Services

UTILITY BY OTHERS

NOTE:
ALL PROPOSED UTILITY WORK SHOWN ON THIS SHEET WILL BE DONE BY OTHERS. NO PAYMENT WILL BE MADE TO THE CONTRACTOR FOR PROPOSED UTILITY WORK SHOWN ON THIS SHEET.



MATCH LINE -L- STA. 484 + 50
SEE SHEET UO-06

MATCH LINE -L- STA. 497 + 50
SEE SHEET UO-08

REVISIONS

8/17/99
5/20/07 AM
5/20/07 12:29:15D ut_rdl7_U007_Psh-dgn
Tosha Barbour, Division 2007, Utilities Services Emp

CIVIL ENGINEERS
ENVIRONMENTAL - CEI
LAND SURVEYING
SUBSURFACE UTILITY ENGINEERING

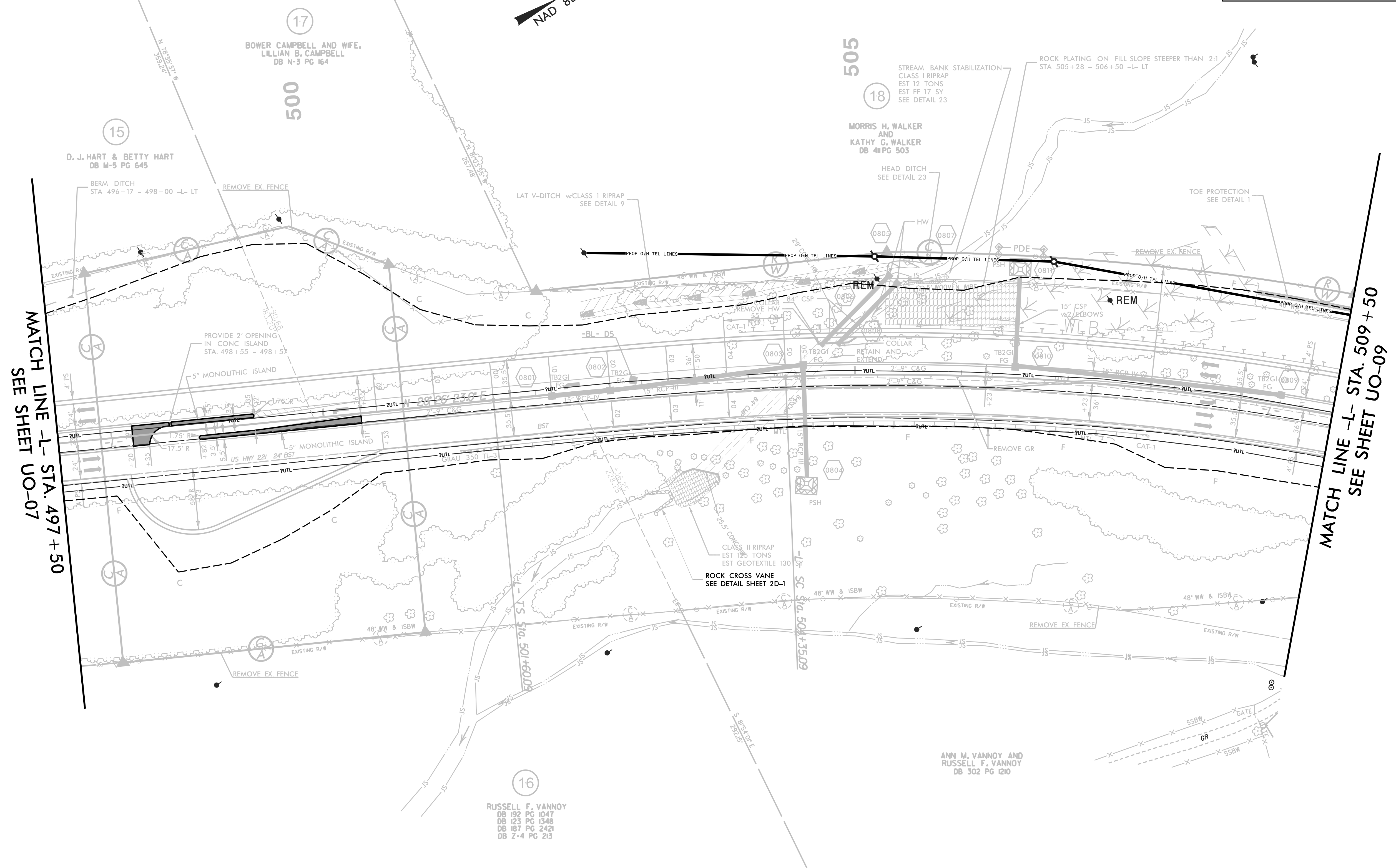
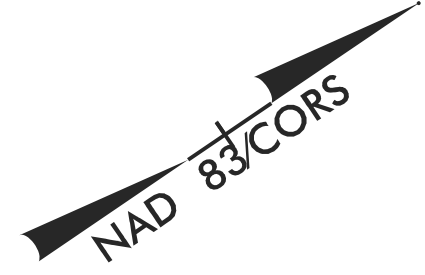
KCI
ASSOCIATES OF N.C.

SUITE 220, LANDMARK CENTER II,
4601 SIX FORKS ROAD,
RALEIGH, NORTH CAROLINA 27609
(919) 783-9214
WWW.KCI.COM

UTILITY BY OTHERS

NOTE:
 ALL PROPOSED UTILITY WORK SHOWN ON THIS SHEET WILL BE DONE BY OTHERS. NO PAYMENT WILL BE MADE TO THE CONTRACTOR FOR PROPOSED UTILITY WORK SHOWN ON THIS SHEET.

8/17/99



MATCH LINE -L- STA. 497 + 50
 SEE SHEET UO-07

MATCH LINE -L- STA. 509 + 50
 SEE SHEET UO-09

REVISIONS

16
 RUSSELL F. VANNOY
 DB 192 PG 1047
 DB 023 PG 1348
 DB 187 PG 2421
 DB Z-4 PG 213

-L-

PI Sta 503+43.45	PI Sta 509+76.31
Os = 3° 22' 52.3"	Δ = 26° 09' 14.0" (RT)
LS = 275.00'	D = 2' 27" 32.6"
LT = 183.37'	L = 1,063.58'
ST = 91.70'	T = 541.22'
	R = 2,330.00'
	SE = .05
	RUNOFF = 275'

CIVIL ENGINEERS
ENVIRONMENTAL - CEI
LAND SURVEYING
SUBSURFACE UTILITY
ENGINEERING

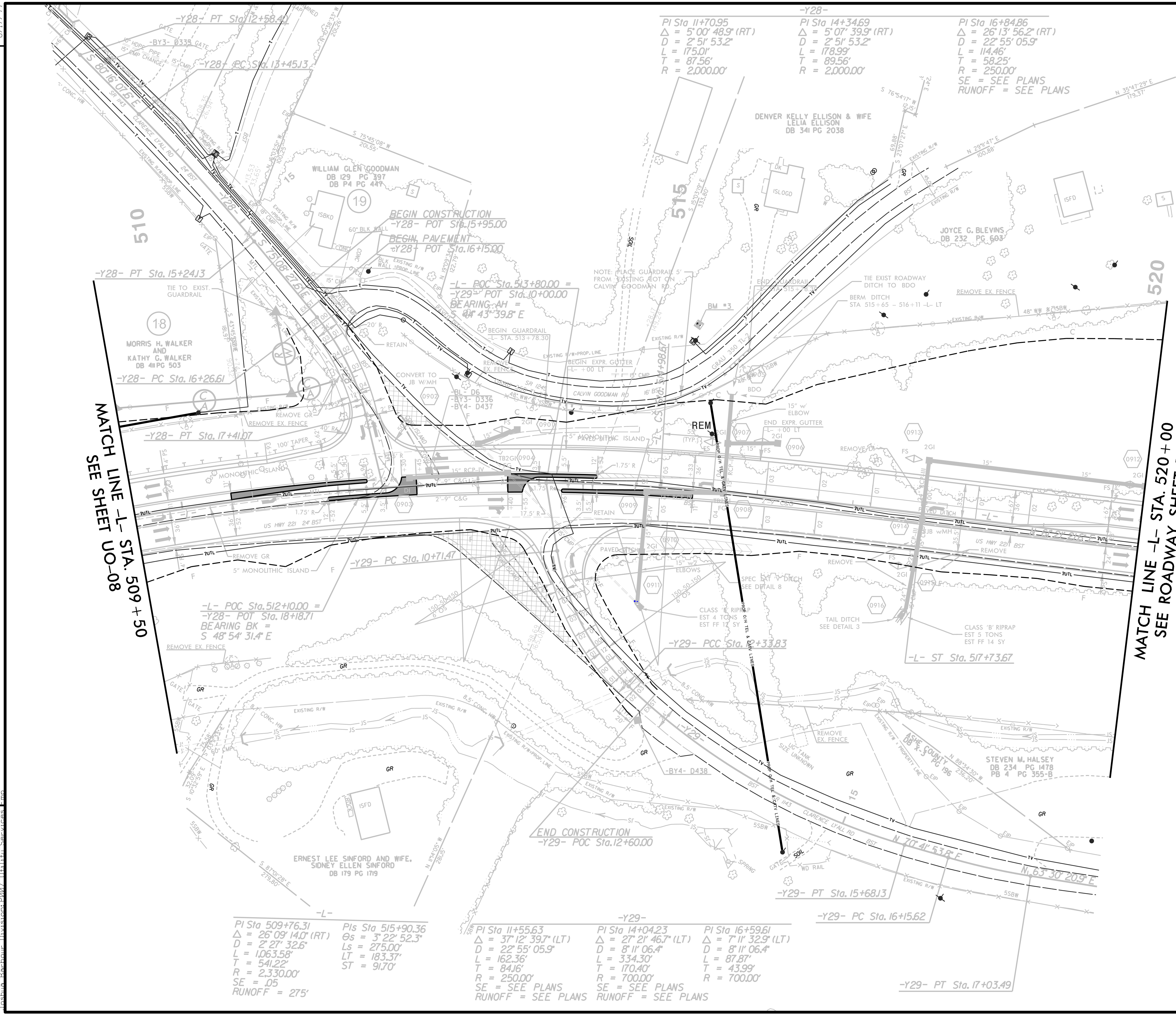
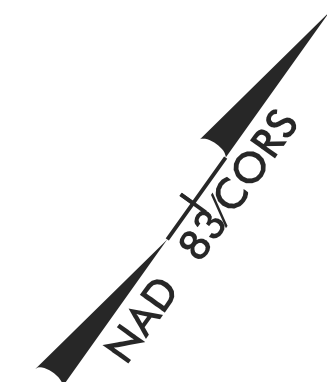
KCI
 ASSOCIATES OF N.C.

SUITE 220, LANDMARK CENTER II,
 4601 SIX FORKS ROAD,
 RALEIGH, NORTH CAROLINA 27609
 (919) 783-9214
 WWW.KCI.COM

5:05:18 AM
 R-2915D_ut_rdu8_U008_psh.dgn
 Joshua Barber, Division 2007, Utility Services Emp

UTILITY BY OTHERS

NOTE:
ALL PROPOSED UTILITY WORK SHOWN ON THIS SHEET WILL BE DONE BY OTHERS. NO PAYMENT WILL BE MADE TO THE CONTRACTOR FOR PROPOSED UTILITY WORK SHOWN ON THIS SHEET.



-L-
 PI Sta 509+76.31 Δ = 26° 09' 14.0" (RT)
 D = 2° 27' 32.6"
 L = 1,063.58'
 T = 541.22'
 R = 2,330.00'
 SE = 05
 RUNOFF = 275'

PIs Sta 515+90.36 Δs = 3° 22' 52.3"
 Ls = 275.00'
 LT = 183.37'
 ST = 91.70'

-Y29-
 PI Sta 11+55.63 Δ = 37° 12' 39.7" (LT)
 D = 22° 55' 05.9"
 L = 162.36'
 T = 84.16'
 R = 250.00'
 SE = SEE PLANS
 RUNOFF = SEE PLANS

PI Sta 14+04.23 Δ = 27° 21' 46.7" (LT)
 D = 8° 11' 06.4"
 L = 334.30'
 T = 170.40'
 R = 700.00'
 SE = SEE PLANS
 RUNOFF = SEE PLANS

PI Sta 16+59.61 Δ = 7° 11' 32.9" (LT)
 D = 8° 11' 06.4"
 L = 87.87'
 T = 43.99'
 R = 700.00'
 SE = SEE PLANS
 RUNOFF = SEE PLANS

-Y29- PT Sta. 17+03.49

MATCH LINE -L- STA. 509+50
SEE SHEET UO-08

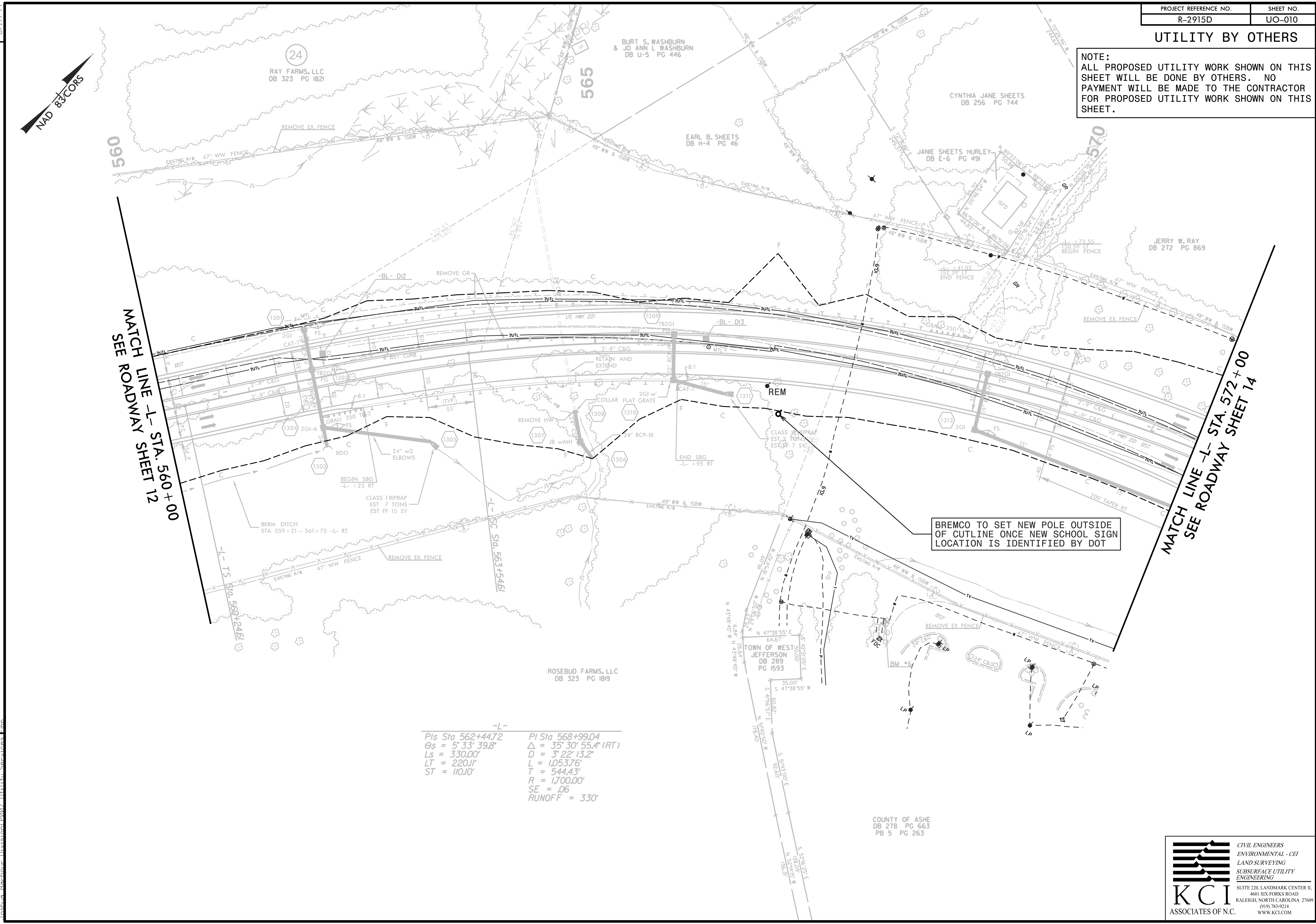
MATCH LINE -L- STA. 520+00
SEE ROADWAY SHEET 10

REVISIONS

8/17/99
5/27/98 AM
R-2915D ut_cdl9_u009_psh.dgn
Toshio Barbour, Division 2007, 11/11/11, Services Corp

UTILITY BY OTHERS

NOTE:
 ALL PROPOSED UTILITY WORK SHOWN ON THIS SHEET WILL BE DONE BY OTHERS. NO PAYMENT WILL BE MADE TO THE CONTRACTOR FOR PROPOSED UTILITY WORK SHOWN ON THIS SHEET.



MATCH LINE -L- STA. 560+00
 SEE ROADWAY SHEET 12

MATCH LINE -L- STA. 572+00
 SEE ROADWAY SHEET 14

BREMCO TO SET NEW POLE OUTSIDE OF CUTLINE ONCE NEW SCHOOL SIGN LOCATION IS IDENTIFIED BY DOT

-L-	
PIs Sta 562+44.72	PI Sta 568+99.04
θs = 5° 33' 39.8"	Δ = 35° 30' 55.4" (RT)
Ls = 330.00'	D = 3° 22' 13.2"
LT = 220.11'	L = 1,053.76'
ST = 110.10'	T = 544.43'
	R = 1,700.00'
	SE = .06
	RUNOFF = 330'

COUNTY OF ASHE
 DB 278 PG 663
 PB 5 PG 263

REVISIONS

8/17/99
 5:54:30 AM
 5/29/15D ut_r.dwg/10_110210_psh.dwg
 Joshua Barbour, Division 2007, Utilities Services Corp

UTILITY BY OTHERS

NOTE:
 ALL PROPOSED UTILITY WORK SHOWN ON THIS SHEET WILL BE DONE BY OTHERS. NO PAYMENT WILL BE MADE TO THE CONTRACTOR FOR PROPOSED UTILITY WORK SHOWN ON THIS SHEET.

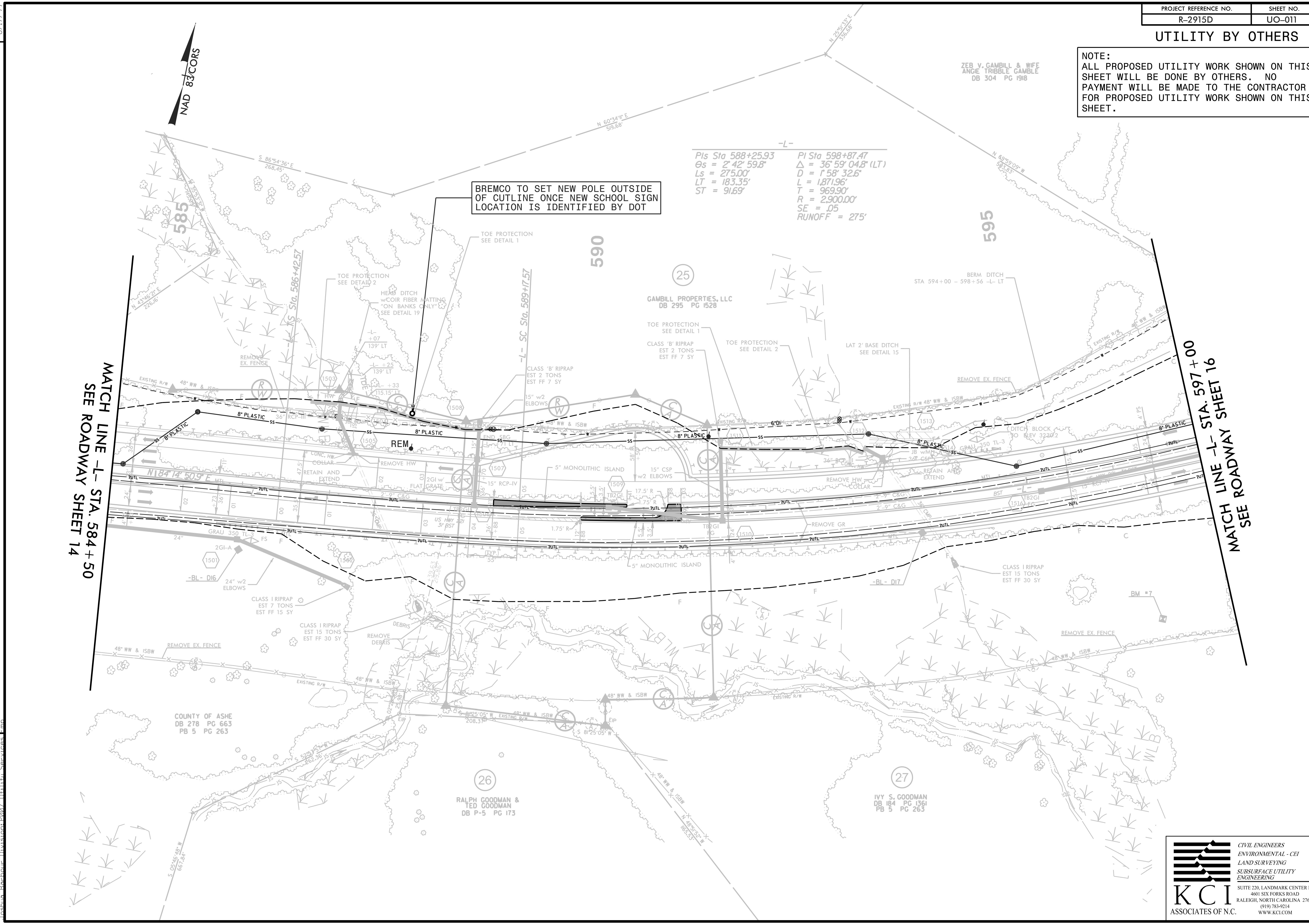
ZEB V. GAMBILL & WIFE
 ANGE TRIBBLE GAMBILE
 DB 304 PG 1918

-L-
 Pls Sta 588+25.93 Pls Sta 598+87.47
 Os = 2' 42" 59.8" Δ = 36' 59" 04.8" (LT)
 Ls = 275.00' D = 1' 58" 32.6"
 LT = 183.35' L = 1,871.96'
 ST = 91.69' T = 969.90'
 R = 2,900.00'
 SE = .05
 RUNOFF = 275'

BREMCO TO SET NEW POLE OUTSIDE OF CUTLINE ONCE NEW SCHOOL SIGN LOCATION IS IDENTIFIED BY DOT

MATCH LINE -L- STA. 584 + 50
 SEE ROADWAY SHEET 14

MATCH LINE -L- STA. 597 + 00
 SEE ROADWAY SHEET 16



REVISIONS

01/09/14 - RW REVISION: REVISED TDE AT -L- STA. 587+33 LT ON PARCEL 25. - TLW

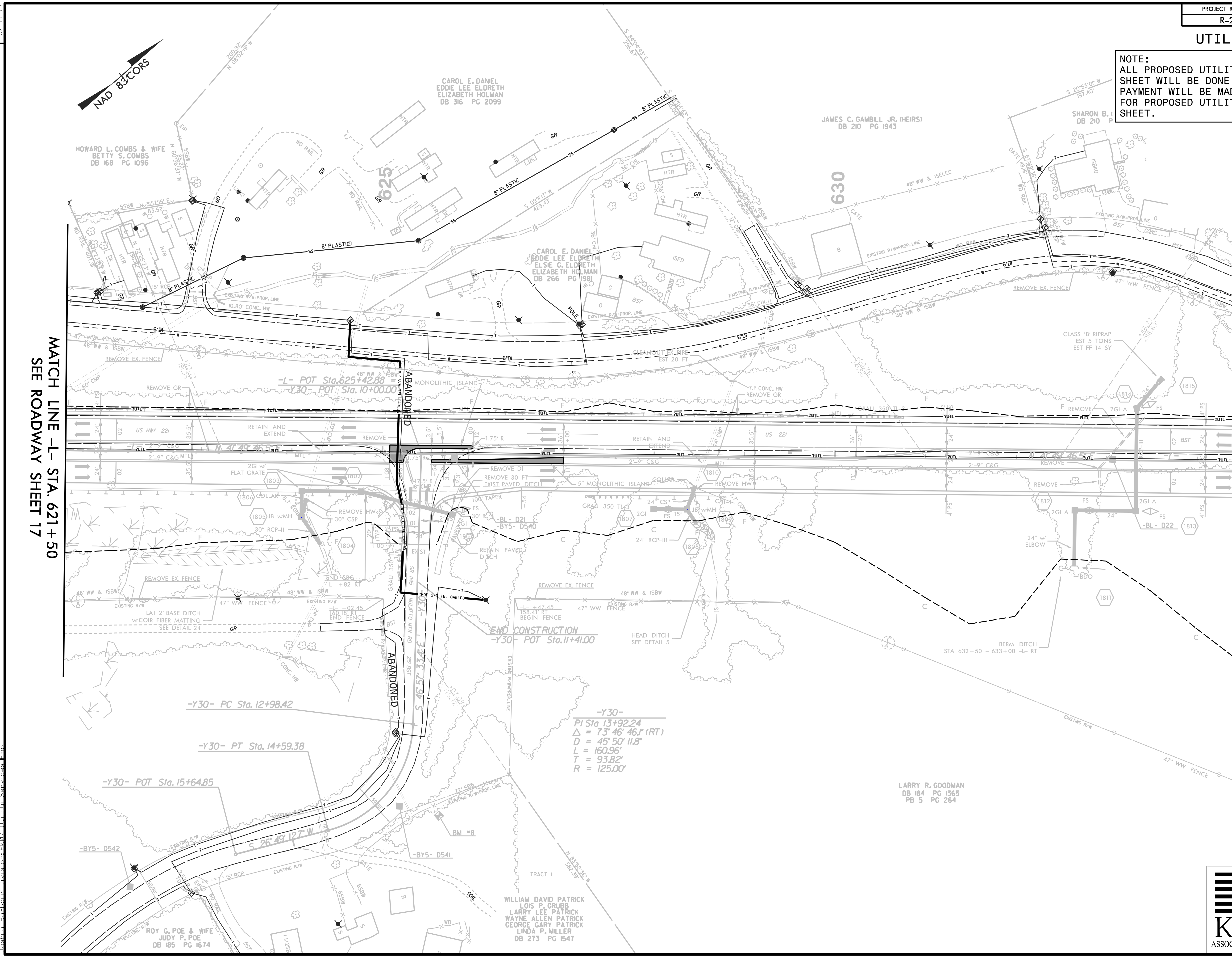
5/31/14 AM
 5/29/15D ut_rdu11_U0011_psh-dgn
 Joshua Bohour, Division 2007, H&H Services, Inc.

CIVIL ENGINEERS
 ENVIRONMENTAL - CEI
 LAND SURVEYING
 SUBSURFACE UTILITY
 ENGINEERING

SUITE 220, LANDMARK CENTER II,
 4601 SIX FORKS ROAD
 RALEIGH, NORTH CAROLINA 27609
 (919) 785-9214
 WWW.KCI.COM

UTILITY BY OTHERS

NOTE:
ALL PROPOSED UTILITY WORK SHOWN ON THIS SHEET WILL BE DONE BY OTHERS. NO PAYMENT WILL BE MADE TO THE CONTRACTOR FOR PROPOSED UTILITY WORK SHOWN ON THIS SHEET.



MATCH LINE -L- STA. 621+50
SEE ROADWAY SHEET 17

MATCH LINE -L- STA. 634+50
SEE SHEET UO-013

REVISIONS

-Y30-
PI Sta 13+92.24
 $\Delta = 73^{\circ} 46' 46.1''$ (RT)
D = 45' 50" 11.8"
L = 160.96'
T = 93.82'
R = 125.00'

WILLIAM DAVID PATRICK
LOIS P. GRUBB
LARRY LEE PATRICK
WAYNE ALLEN PATRICK
GEORGE GARY PATRICK
LINDA P. MILLER
DB 273 PG 1547

LARRY R. GOODMAN
DB 184 PG 1365
PB 5 PG 264

HOWARD L. COMBS & WIFE
BETTY S. COMBS
DB 168 PG 1096

CAROL E. DANIEL
EDDIE LEE ELDRETH
ELIZABETH HOLMAN
DB 316 PG 2099

JAMES C. GAMBILL JR. (HEIRS)
DB 210 PG 1943

SHARON B. I.
DB 210 P

ROY G. POE & WIFE
JUDY P. POE
DB 185 PG 1674

KCI
ASSOCIATES OF N.C.

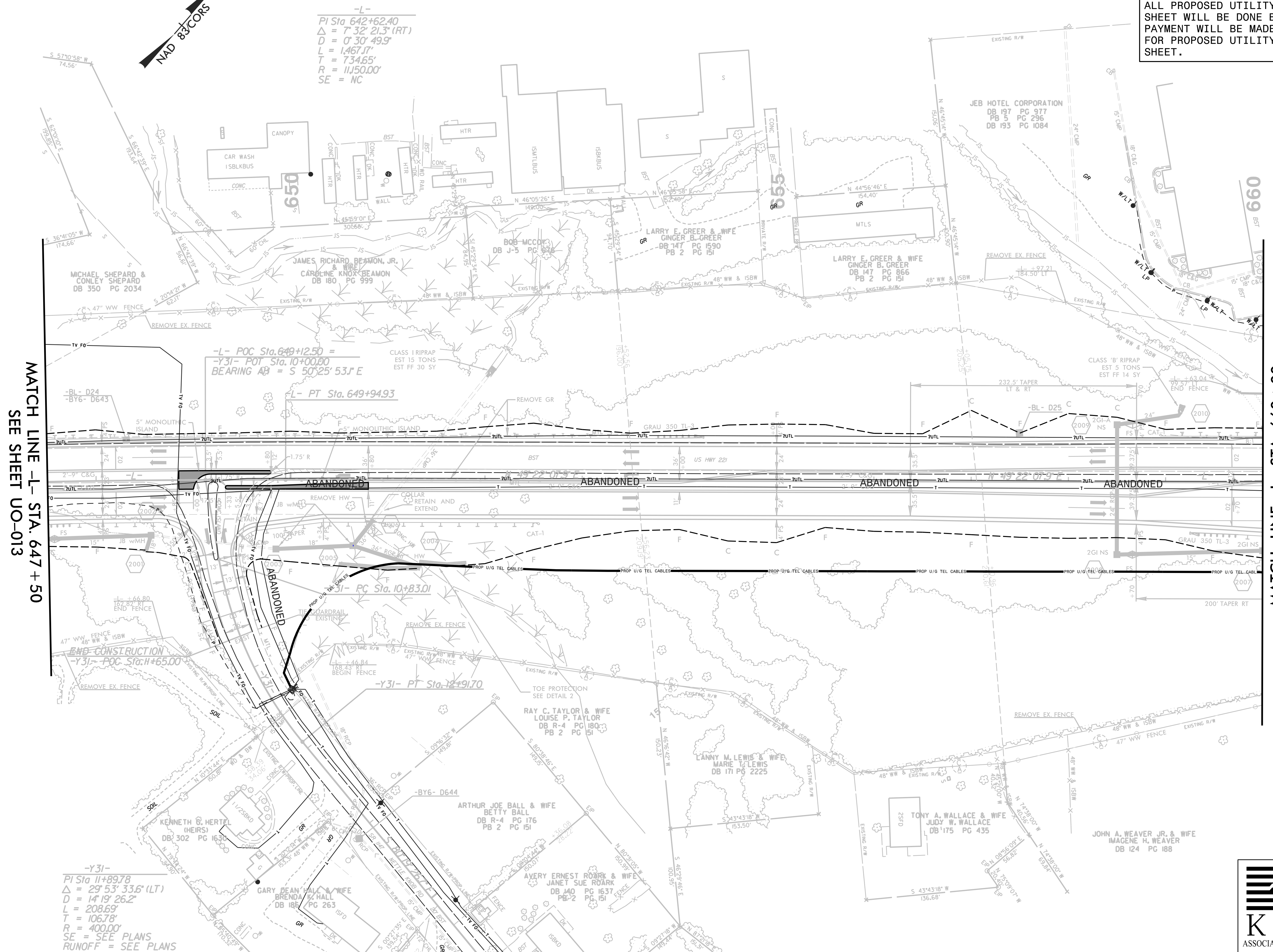
CIVIL ENGINEERS
ENVIRONMENTAL - CEI
LAND SURVEYING
SUBSURFACE UTILITY
ENGINEERING

SUITE 220, LANDMARK CENTER II,
4601 SIX FORKS ROAD
RALEIGH, NORTH CAROLINA 27609
(919) 783-9214
WWW.KCI.COM

8/17/99
538.50 AM 12:29:15D ut_r.dwl2_u0012_psh.dgn
Tosha Barber, Division 2007, Utility Services

UTILITY BY OTHERS

NOTE:
 ALL PROPOSED UTILITY WORK SHOWN ON THIS SHEET WILL BE DONE BY OTHERS. NO PAYMENT WILL BE MADE TO THE CONTRACTOR FOR PROPOSED UTILITY WORK SHOWN ON THIS SHEET.



-L-
 PI Sta 642+62.40
 $\Delta = 7^{\circ} 32' 21.3" (RT)$
 $D = 0^{\circ} 30' 49.9"$
 $L = 1,467.17'$
 $T = 734.65'$
 $R = 11,500.00'$
 $SE = NC$

-L- POC Sta. 649+12.50 =
 -Y31- POT Sta. 10+00.00
 BEARING AB = S 50°25' 53.1" E

L- PT Sta. 649+94.93

-Y31- PC Sta. 10+83.01

-Y31- PT Sta. 10+91.70

-Y31-
 PI Sta 11+89.78
 $\Delta = 29^{\circ} 53' 33.6" (LT)$
 $D = 14^{\circ} 19' 26.2"$
 $L = 208.69'$
 $T = 106.78'$
 $R = 400.00'$
 $SE = SEE PLANS$
 $RUNOFF = SEE PLANS$

MATCH LINE -L- STA. 647 + 50
SEE SHEET UO-013

MATCH LINE -L- STA. 660 + 00
SEE SHEET UO-015

REVISIONS

8/17/99
 5/4/06 AM
 R-2915D-ut_r.dwg/14_U0014_psh.dgn
 Joshua Barbour, Division 2007, KCI Engineering Services, Inc.

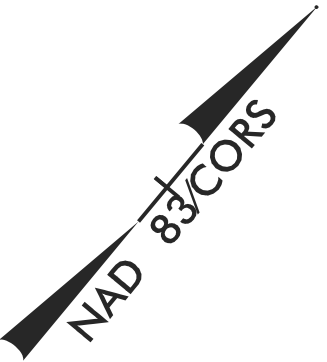


KCI ASSOCIATES OF N.C.
 CIVIL ENGINEERS
 ENVIRONMENTAL - CEI
 LAND SURVEYING
 SUBSURFACE UTILITY
 ENGINEERING
 SUITE 220, LANDMARK CENTER II,
 4601 SIX FORKS ROAD
 RALEIGH, NORTH CAROLINA 27609
 (919) 783-9214
 WWW.KCI.COM



REVISED SIGNAL

NOTE:
ALL PROPOSED UTILITY WORK SHOWN ON THIS SHEET WILL BE DONE BY OTHERS. NO PAYMENT WILL BE MADE TO THE CONTRACTOR FOR PROPOSED UTILITY WORK SHOWN ON THIS SHEET.



Pls Sta 662+61.63 Os = 2' 45" 51.4" Ls = 275.00' LT = 183.36' ST = 91.69'	PI Sta 665+89.68 Δ = 9' 29" 00.8" (LT) D = 2' 00" 37.4" L = 471.73' T = 236.40' R = 2,850.00' SE = .05 RUNOFF = 275'	PI Sta 672+70.19 Δ = 20' 35" 52.2" (LT) D = 2' 20" 19.0" L = 880.77' T = 445.19' R = 2,450.00' SE = .05 RUNOFF = SEE PLANS
---	---	---

FRONTIER NATURAL GAS TO BE LOWERED 2' AT DRAINAGE CROSSINGS AND CONFLICTS.

WEST JEFFERSON, LLC
DB 358 PG 1415
PB 6 PG 510
DB 404 PG 749
PB 6 PG 510

-L- PO STA 665+63.69 = 20
-Y32- PO STA 21+99.41

MATCH LINE -L- STA. 660+00
SEE SHEET UO-014

MATCH LINE -Y32- STA. 25+25
SEE SHEET UO-016

FRONTIER NATURAL GAS TO BE LOWERED 2' AT DRAINAGE CROSSINGS AND CONFLICTS.

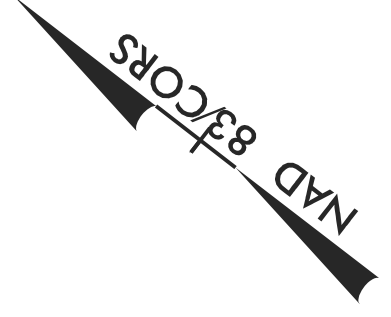
8/17/99

REVISIONS

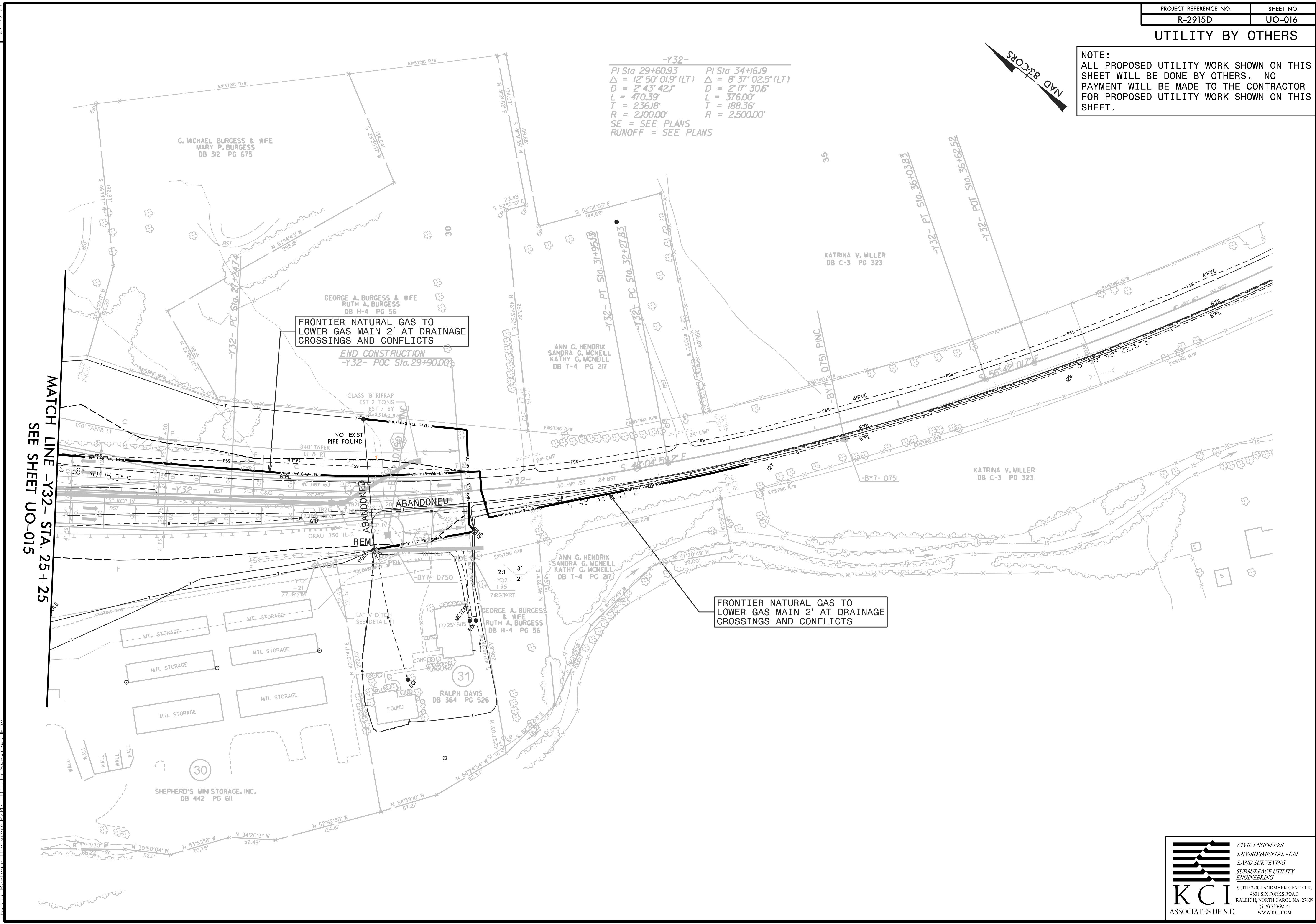
5/23/08 AM 12:29:15D ut_rdu15_u0015_psh.dgn
Lashar, Barbara - Division 2007 - Utilities Services

UTILITY BY OTHERS

NOTE:
ALL PROPOSED UTILITY WORK SHOWN ON THIS SHEET WILL BE DONE BY OTHERS. NO PAYMENT WILL BE MADE TO THE CONTRACTOR FOR PROPOSED UTILITY WORK SHOWN ON THIS SHEET.



-Y32-
 PI Sta 29+60.93 PI Sta 34+16.19
 $\Delta = 12^{\circ} 50' 01.9" (LT)$ $\Delta = 8^{\circ} 37' 02.5" (LT)$
 $D = 2^{\circ} 43' 42.1"$ $D = 2^{\circ} 17' 30.6"$
 $L = 470.39'$ $L = 376.00'$
 $T = 236.18'$ $T = 188.36'$
 $R = 2,100.00'$ $R = 2,500.00'$
 SE = SEE PLANS
 RUNOFF = SEE PLANS



MATCH LINE -Y32- STA. 25+25
SEE SHEET UO-015

REVISIONS

8/17/99
 5/4/00 AM 12:29:50 ut_rdu16_u0016_psh-dgn
 5/17/06 10:16:06 Tasha Barbour- Division 2007
 11/11/11 Services fmp