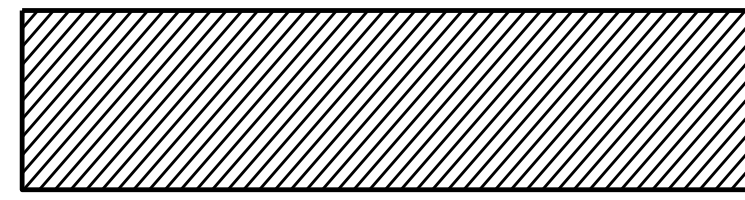
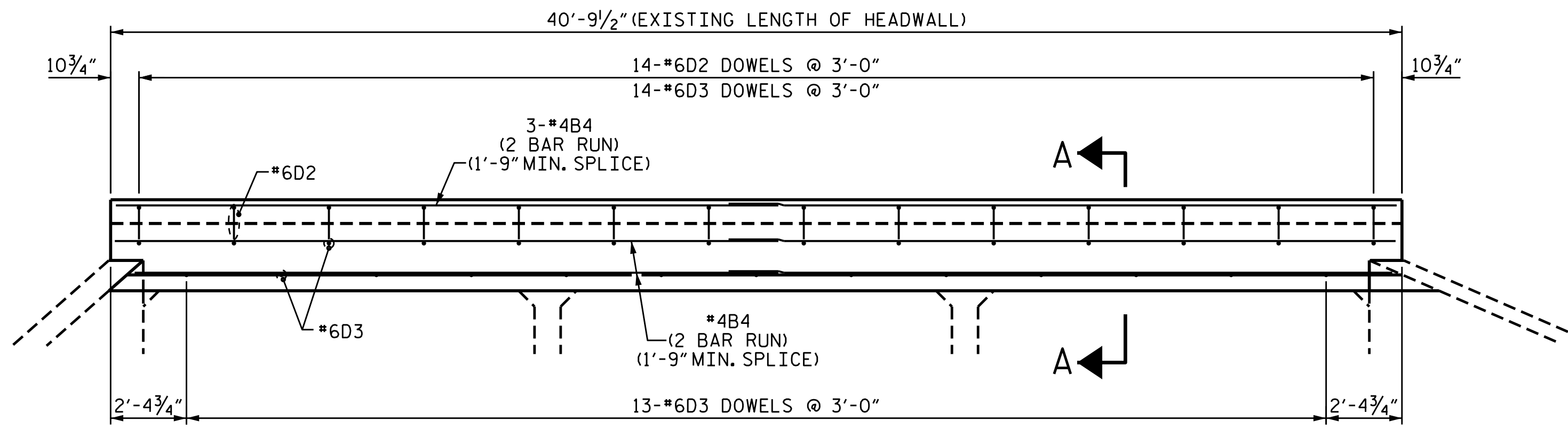


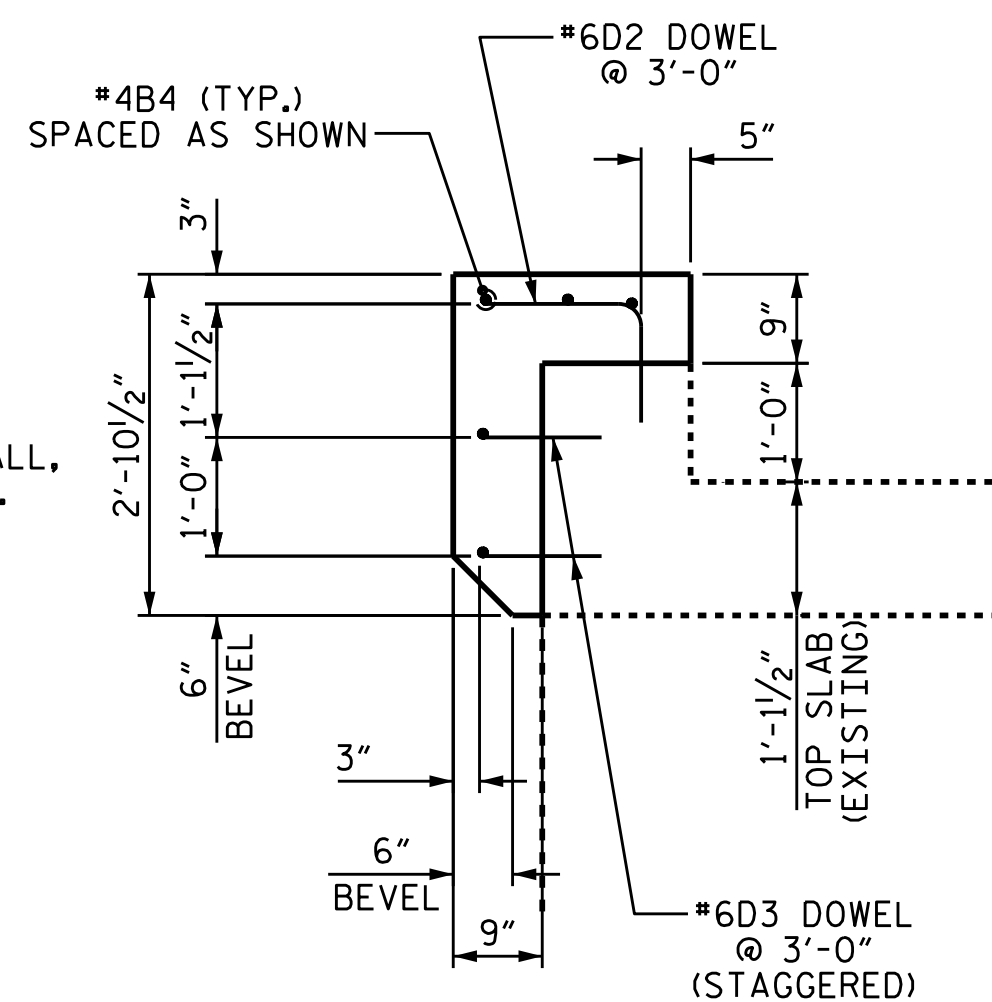
STAGE I & STAGE II LOOKING UPSTREAM



DENOTES STAGE I



PART-END ELEVATION



SECTION A-A
BEVEL ADDITION

THE BEVEL ADDITION SHALL BE ADDED TO THE INLET END OF THE EXISTING CULVERT AND EXTEND THE FULL LENGTH OF THE HEADWALL.

DRAWN BY : H. T. BARBOUR DATE : 6-2-14
 CHECKED BY : B. N. GRADY DATE : 8-14
 DESIGN ENGINEER OF RECORD : RONG DEAN DATE : 11-14

18-DEC-2014 16:56
 R:\Structures\Plans\tbarbour\Microstation\R2915D.SD.CU.dgn
 bklappenbach

BILL OF MATERIAL

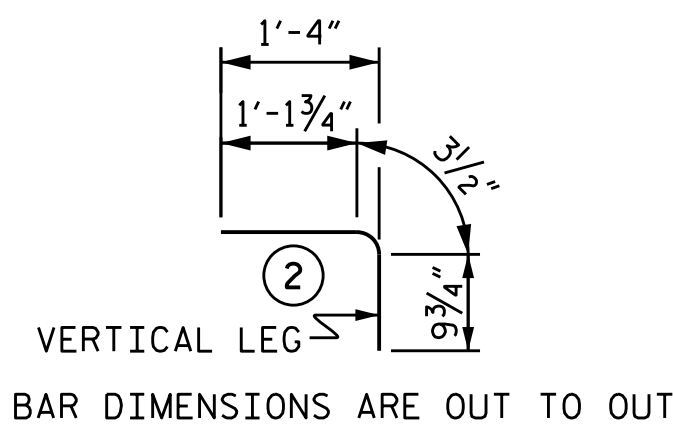
BAR	NO.	SIZE	TYPE	LENGTH	WEIGHT	BAR	NO.	SIZE	TYPE	LENGTH	WEIGHT	BAR	NO.	SIZE	TYPE	LENGTH	WEIGHT
A1	303	#5	1	7'-4"	2318	A262	2	#5	STR	3'-9"	8	A456	2	#5	STR	12'-1"	25
A2	303	#5	1	5'-6"	1738	A263	1	#5	STR	19'-7"	20	A457	2	#5	STR	10'-8"	22
A3	150	#4	1	5'-2"	518	A264	1	#5	STR	16'-11"	18	A458	2	#5	STR	9'-3"	19
A100	136	#5	STR	32'-8"	4634	A265	1	#5	STR	14'-4"	15	A459	2	#5	STR	7'-11"	17
A101	2	#5	STR	31'-6"	66	A266	1	#5	STR	11'-8"	12	A460	2	#5	STR	6'-6"	14
A102	2	#5	STR	30'-2"	63	A267	1	#5	STR	9'-0"	9	A461	2	#5	STR	5'-1"	11
A103	2	#5	STR	28'-9"	60	A268	1	#5	STR	6'-5"	7	A462	2	#5	STR	3'-9"	8
A104	2	#5	STR	27'-4"	57	A269	1	#5	STR	3'-9"	4	A463	1	#5	STR	19'-7"	20
A105	2	#5	STR	26'-0"	54	A300	136	#5	STR	32'-8"	4634	A464	1	#5	STR	16'-11"	18
A106	2	#5	STR	24'-7"	51	A301	2	#5	STR	31'-6"	66	A465	1	#5	STR	14'-4"	15
A107	2	#5	STR	23'-2"	48	A302	2	#5	STR	30'-2"	63	A466	1	#5	STR	11'-8"	12
A108	2	#5	STR	21'-10"	46	A303	2	#5	STR	28'-9"	60	A467	1	#5	STR	9'-0"	9
A109	2	#5	STR	20'-5"	43	A304	2	#5	STR	27'-4"	57	A468	1	#5	STR	6'-5"	7
A110	2	#5	STR	19'-0"	40	A305	2	#5	STR	26'-0"	54	A469	1	#5	STR	3'-9"	4
A111	2	#5	STR	17'-7"	37	A306	2	#5	STR	24'-7"	51	B1	153	#4	STR	10'-9"	1099
A112	2	#5	STR	16'-3"	34	A307	2	#5	STR	23'-2"	48	B2	303	#4	STR	7'-4"	1484
A113	2	#5	STR	14'-10"	31	A308	2	#5	STR	21'-10"	46	B3	302	#4	STR	10'-9"	2169
A114	2	#5	STR	13'-5"	28	A309	2	#5	STR	20'-5"	43	C1	441	#4	STR	27'-0"	7954
A115	2	#5	STR	12'-1"	25	A310	2	#5	STR	19'-0"	40	D1	72	#6	STR	2'-6"	270
A116	2	#5	STR	10'-8"	22	A311	2	#5	STR	17'-7"	37	G1	4	#5	STR	33'-3"	139
A117	2	#5	STR	9'-3"	19	A312	2	#5	STR	16'-3"	34	S1	6	#8	STR	40'-2"	643
A118	2	#5	STR	7'-11"	17	A313	2	#5	STR	14'-10"	31	S2	3	#8	STR	33'-3"	266
A119	2	#5	STR	6'-6"	14	A314	2	#5	STR	13'-5"	28	S3	3	#8	STR	18'-2"	146
A120	2	#5	STR	5'-1"	11	A315	2	#5	STR	12'-1"	25	S4	3	#8	STR	20'-6"	164
A121	2	#5	STR	3'-9"	8	A316	2	#5	STR	10'-8"	22	S5	6	#8	STR	20'-10"	334
A122	1	#5	STR	32'-1"	33	A317	2	#5	STR	9'-3"	19	S6	6	#8	STR	24'-10"	398
A123	1	#5	STR	29'-5"	31	A318	2	#5	STR	7'-11"	17	REINFORCING STEEL 42838 LBS.					
A124	1	#5	STR	26'-10"	28	A319	2	#5	STR	6'-6"	14	BAR TYPES					
A125	1	#5	STR	24'-2"	25	A320	2	#5	STR	5'-1"	11	VERTICAL LEG					
A126	1	#5	STR	21'-6"	22	A321	2	#5	STR	3'-9"	8	①					
A127	1	#5	STR	18'-11"	20	A322	1	#5	STR	32'-1"	33	6" R.					
A128	1	#5	STR	16'-3"	17	A323	1	#5	STR	29'-5"	31	A1 3'-10"					
A129	1	#5	STR	13'-7"	14	A324	1	#5	STR	26'-10"	28	A2 2'-9"					
A130	1	#5	STR	10'-11"	11	A325	1	#5	STR	24'-2"	25	A3 2'-7"					
A131	1	#5	STR	8'-4"	9	A326	1	#5	STR	21'-6"	22	9/16"					
A132	1	#5	STR	5'-8"	6	A327	1	#5	STR	18'-11"	20	A1 2'-8 1/2"					
A133	1	#5	STR	3'-0"	3	A328	1	#5	STR	16'-3"	17	A2 1'-11 1/2"					
A200	143	#5	STR	14'-11"	2225	A329	1	#5	STR	13'-7"	14	A3 1'-9 1/2"					
A201	2	#5	STR	13'-9"	29	A330	1	#5	STR	10'-11"	11	BAR DIMENSIONS ARE OUT TO OUT					
A202	2	#5	STR	12'-5"	26	A331	1	#5	STR	8'-4"	9						
A203	2	#5	STR	11'-0"	23	A332	1	#5	STR	5'-8"	6						
A204	2	#5	STR	9'-7"	20	A333	1	#5	STR	3'-0"	3						
A205	2	#5	STR	8'-3"	17	A400	143	#5	STR	14'-3"	2125						
A206	2	#5	STR	6'-10"	14	A401	2	#5	STR	13'-1"	27						
A207	2	#5	STR	5'-5"	11	A402	2	#5	STR	11'-9"	25						
A208	2	#5	STR	4'-1"	9	A403	2	#5	STR	10'-4"	22						
A209	1	#5	STR	13'-7"	14	A404	2	#5	STR	10'-11"	19						
A210	1	#5	STR	10'-11"	11	A405	2	#5	STR	7'-7"	16						
A211	1	#5	STR	8'-4"	9	A406	2	#5	STR	6'-2"	13						
A212	1	#5	STR	5'-8"	6	A407	2	#5	STR	4'-9"	10						
A213	1	#5	STR	3'-0"	3	A408	2	#5	STR	3'-5"	7						
A250	154	#5	STR	20'-2"	3239	A409	1	#5	STR	13'-7"	14						
A251	2	#5	STR	19'-0"	40	A410	1	#5	STR	10'-11"	11						
A252	2	#5	STR	17'-7"	37	A411	1	#5	STR	8'-4"	9						
A253	2	#5	STR	16'-3"	34	A412	1	#5	STR	5'-8"	6						
A254	2	#5	STR	14'-10"	31	A413	1	#5	STR	3'-0"	3						
A255	2	#5	STR	13'-5"	28	A450	154	#5	STR	20'-2"	3239						
A256	2	#5	STR	12'-1"	25	A451	2	#5	STR	19'-0"	40						
A257	2	#5	STR	10'-8"	22	A452	2	#5	STR	17'-7"	37						
A258	2	#5	STR	9'-3"	19	A453	2	#5	STR	16'-3"	34						
A259	2	#5	STR	7'-11"	17	A454	2	#5	STR	14'-10"	31						
A260	2	#5	STR	6'-6"	14	A455	2	#5	STR	13'-5"	28						
A261	2	#5	STR	5'-1"	11												

BILL OF MATERIAL
(BEVEL ADDITION)

BAR	NO.	SIZE	TYPE	LENGTH	WEIGHT
B4	10	#4	STR	21'-8"	145
D2	14	#6	2	2'-3"	47
D3	27	#6	STR	1'-0"	41

REINFORCING STEEL 233 LBS.

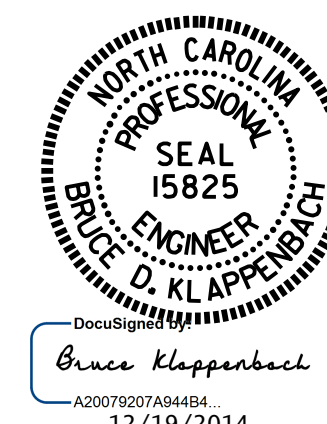
BAR TYPE



BAR DIMENSIONS ARE OUT TO OUT

SPLICE LENGTH CHART

BAR	SIZE	LENGTH
B1	#4	1'-5"
B3	#4	1'-5"
C1	#4	1'-11"



PROJECT NO. R-2915D
 ASHE COUNTY
 STATION: 660+64.00-L-

SHEET 5 OF 6

STATE OF NORTH CAROLINA
 DEPARTMENT OF TRANSPORTATION
 RALEIGH

TRIPLE
 10 FT. X 8 FT.
 CONCRETE BOX CULVERT

REVISIONS						SHEET NO.
NO.	BY:	DATE:	NO.	BY:	DATE:	C-5
1			3			TOTAL SHEETS
2			4			6