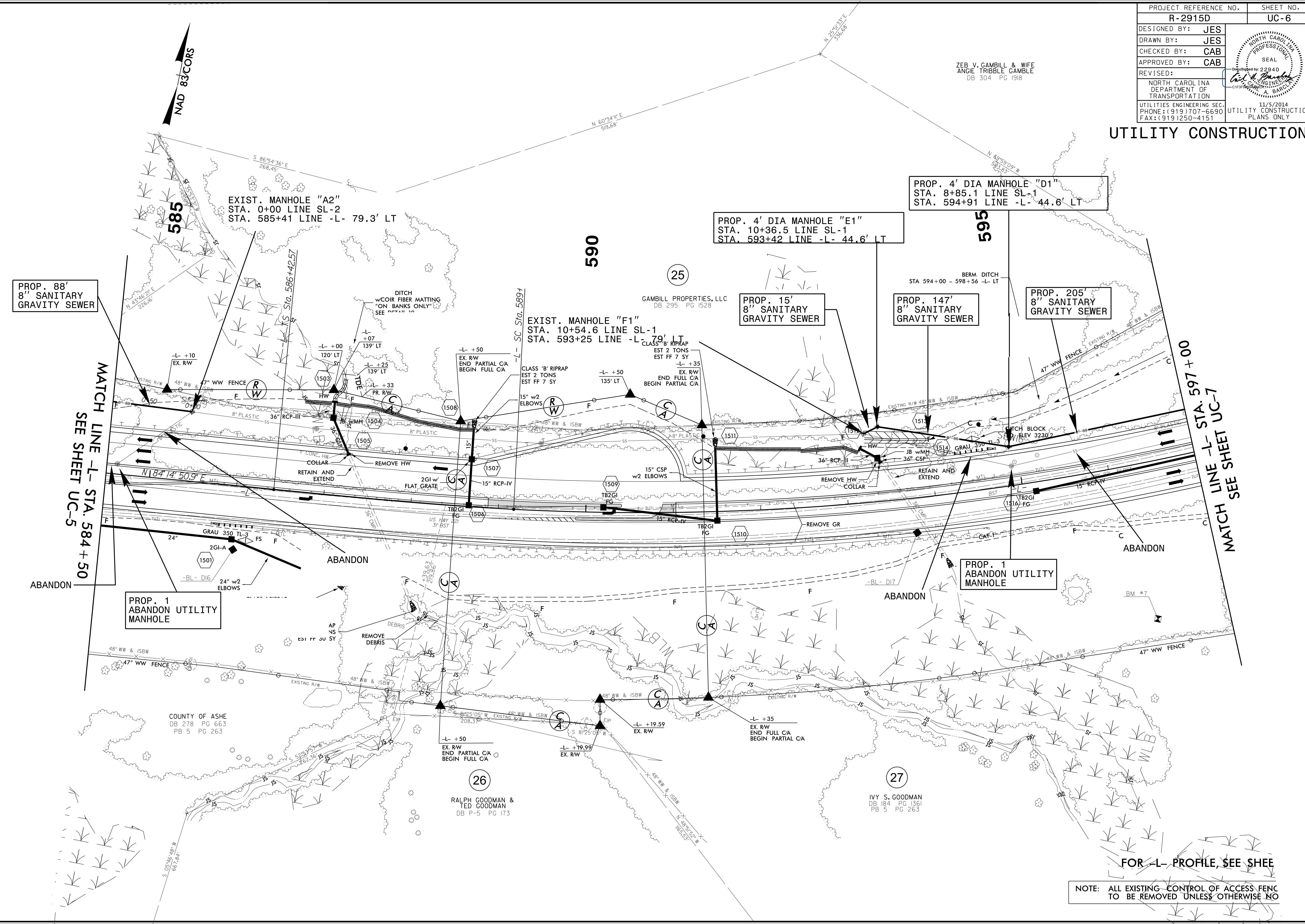


PROJECT REFERENCE NO.	SHEET NO.
R-2915D	UC-6
DESIGNED BY: JES	
DRAWN BY: JES	
CHECKED BY: CAB	
APPROVED BY: CAB	
REVISED:	NORTH CAROLINA DEPARTMENT OF TRANSPORTATION UTILITIES ENGINEERING SEC. PHONE: (919) 707-6690 FAX: (919) 250-4151
11/5/2014 UTILITY CONSTRUCTION PLANS ONLY	

UTILITY CONSTRUCTION



PROP. 88'  
8" SANITARY  
GRAVITY SEWER

MATCH LINE -L- STA. 584 + 50  
SEE SHEET UC-5

PROP. 1  
ABANDON UTILITY  
MANHOLE

EXIST. MANHOLE "F1"  
STA. 10+54.6 LINE SL-1  
STA. 593+25 LINE -L- 79.1' LT

PROP. 4' DIA MANHOLE "E1"  
STA. 10+36.5 LINE SL-1  
STA. 593+42 LINE -L- 44.6' LT

PROP. 4' DIA MANHOLE "D1"  
STA. 8+85.1 LINE SL-1  
STA. 594+91 LINE -L- 44.6' LT

PROP. 15'  
8" SANITARY  
GRAVITY SEWER

PROP. 147'  
8" SANITARY  
GRAVITY SEWER

PROP. 205'  
8" SANITARY  
GRAVITY SEWER

PROP. 1  
ABANDON UTILITY  
MANHOLE

MATCH LINE -L- STA. 597 + 00  
SEE SHEET UC-7

FOR -L- PROFILE, SEE SHEET

NOTE: ALL EXISTING CONTROL OF ACCESS FENCE TO BE REMOVED UNLESS OTHERWISE NOTED

5/14/99  
 04-NOV-2014 2:17 p.m. \\proj\proj\2915D\UC-15\_UC6.psh.dgn  
 utilities\c\barlow\c\barlow\2915D\UC-15\_UC6.psh.dgn