

PHASING DIAGRAM

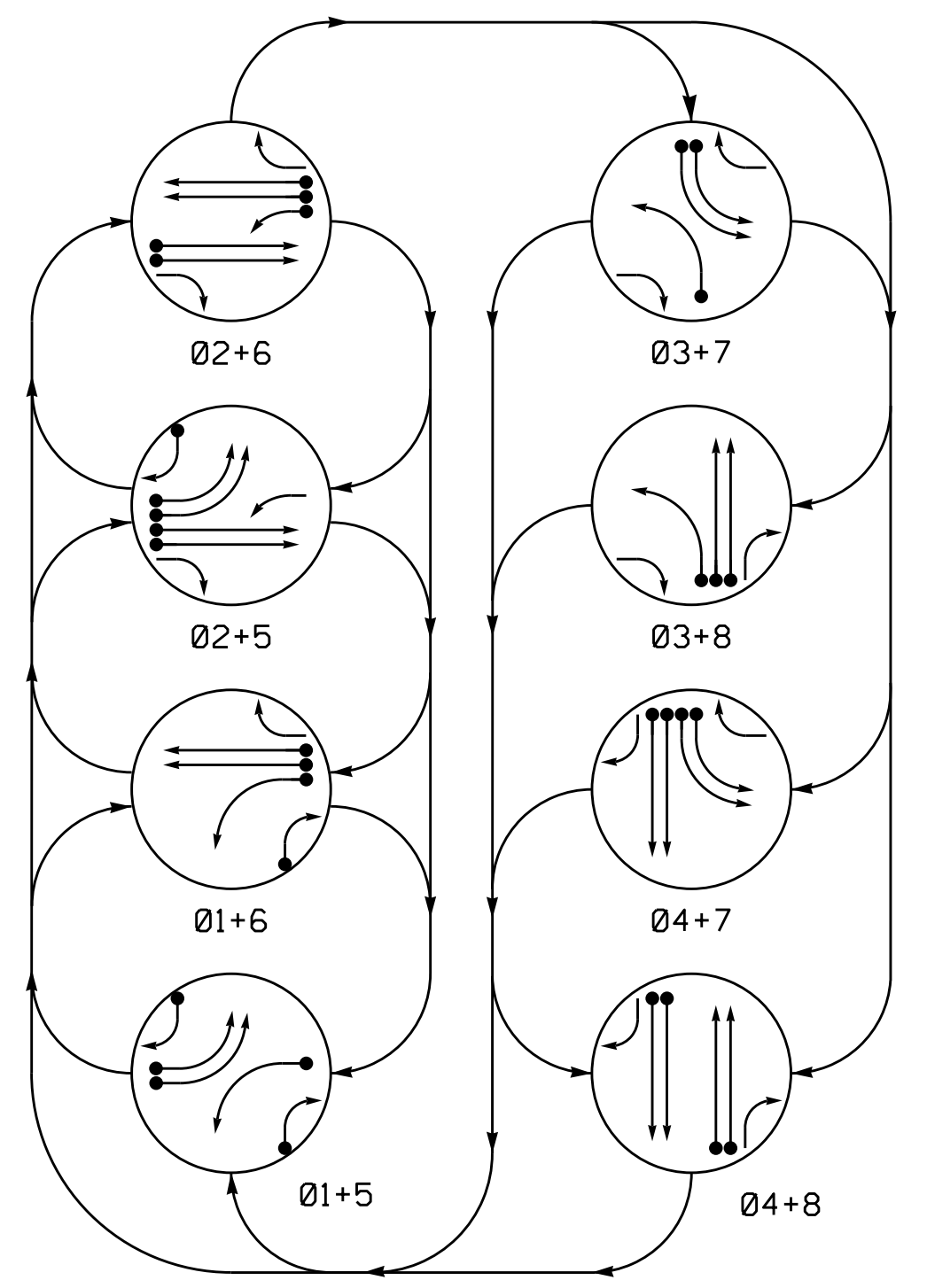


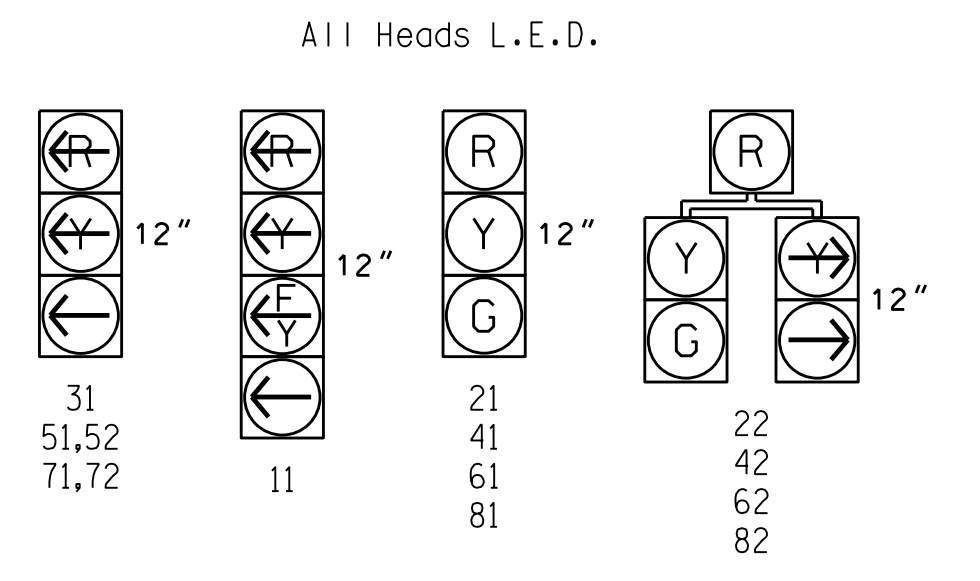
TABLE OF OPERATION

SIGNAL FACE	PHASE								
	01+5	01+6	02+5	02+6	03+7	03+8	04+7	04+8	FLASH
11	—	—	F	F	R	R	R	R	Y
21	R	R	G	G	R	R	R	R	Y
22	R	R	G	G	R	R	R	R	Y
31	R	R	R	R	—	—	—	—	—
41	R	R	R	R	R	R	G	G	R
42	R	R	R	R	R	R	G	G	R
51,52	—	—	—	—	—	—	—	—	—
61	R	G	R	G	R	R	R	R	Y
62	R	G	R	G	R	R	R	R	Y
71,72	R	R	R	R	—	—	—	—	—
81	R	R	R	R	R	G	G	R	—
82	R	R	R	R	R	G	G	R	—

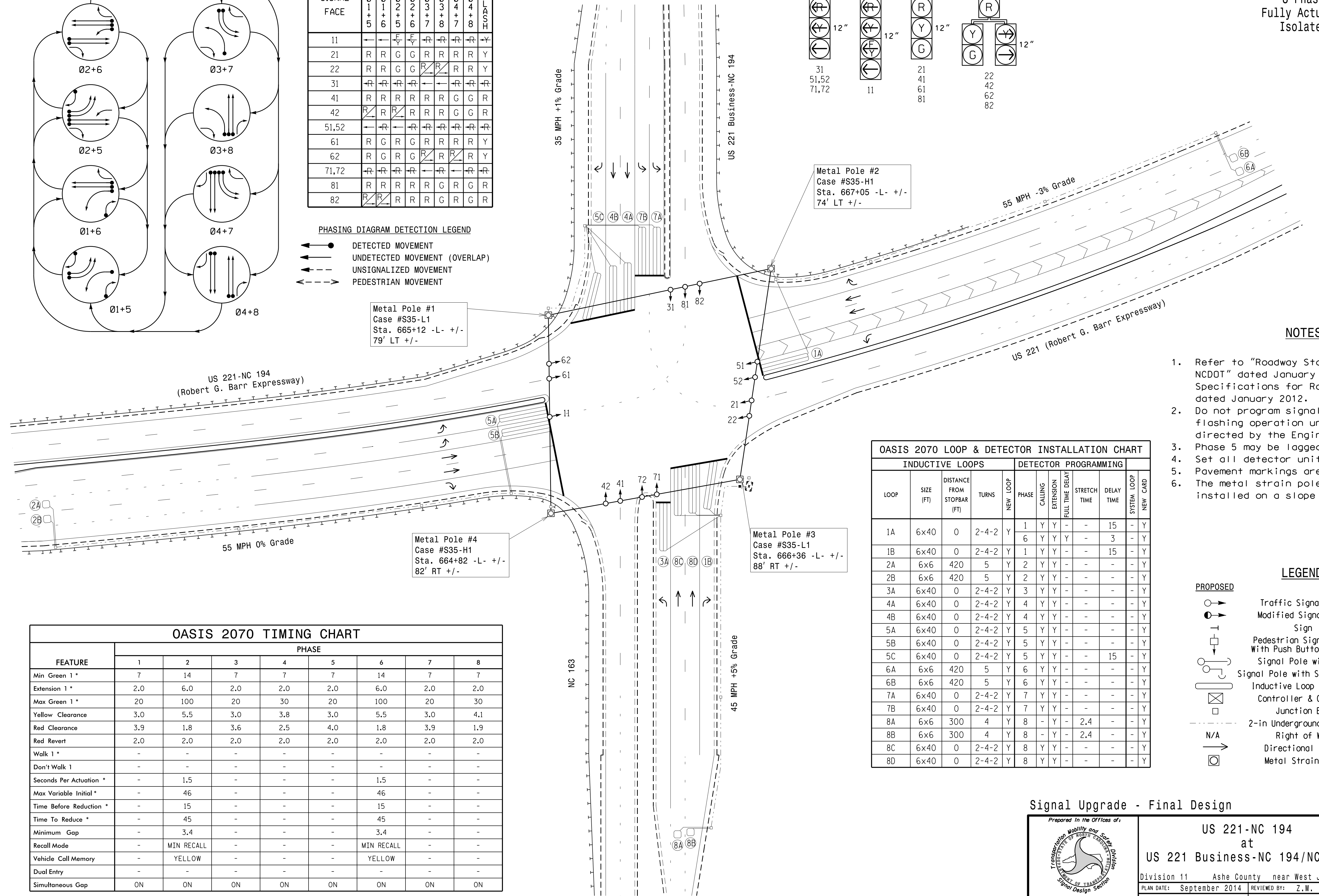
PHASING DIAGRAM DETECTION LEGEND

- DETECTED MOVEMENT
- UNDETECTED MOVEMENT (OVERLAP)
- UNSIGNALIZED MOVEMENT
- - - PEDESTRIAN MOVEMENT

SIGNAL FACE I.D.



8 Phase Fully Actuated Isolated



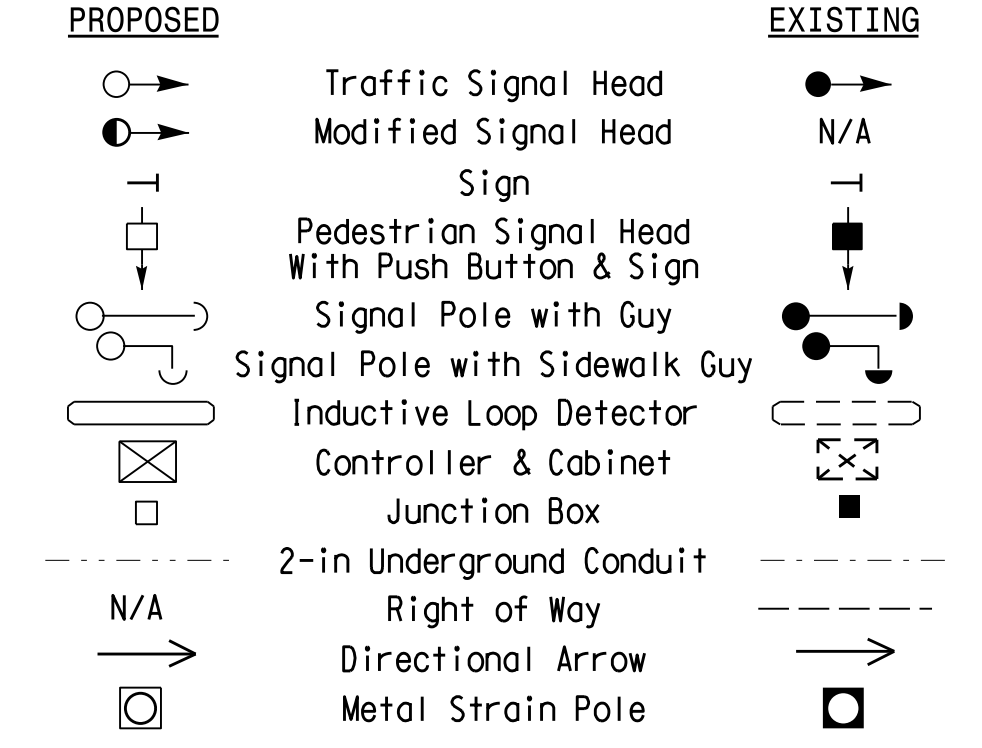
OASIS 2070 LOOP & DETECTOR INSTALLATION CHART

LOOP	SIZE (FT)	DISTANCE FROM STOPBAR (FT)	TURNS	NEW LOOP	DETECTOR PROGRAMMING					SYSTEM LOOP	NEW CARD	
					PHASE	CALLING	EXTENSION	STRETCH TIME	DELAY TIME			
1A	6x40	0	2-4-2	Y	1	Y	Y	-	-	15	-	Y
1B	6x40	0	2-4-2	Y	6	Y	Y	-	-	3	-	Y
2A	6x6	420	5	Y	2	Y	Y	-	-	-	-	Y
2B	6x6	420	5	Y	2	Y	Y	-	-	-	-	Y
3A	6x40	0	2-4-2	Y	3	Y	Y	-	-	-	-	Y
4A	6x40	0	2-4-2	Y	4	Y	Y	-	-	-	-	Y
4B	6x40	0	2-4-2	Y	4	Y	Y	-	-	-	-	Y
5A	6x40	0	2-4-2	Y	5	Y	Y	-	-	-	-	Y
5B	6x40	0	2-4-2	Y	5	Y	Y	-	-	-	-	Y
5C	6x40	0	2-4-2	Y	5	Y	Y	-	-	15	-	Y
6A	6x6	420	5	Y	6	Y	Y	-	-	-	-	Y
6B	6x6	420	5	Y	6	Y	Y	-	-	-	-	Y
7A	6x40	0	2-4-2	Y	7	Y	Y	-	-	-	-	Y
7B	6x40	0	2-4-2	Y	7	Y	Y	-	-	-	-	Y
8A	6x6	300	4	Y	8	-	Y	-	-	2.4	-	Y
8B	6x6	300	4	Y	8	-	Y	-	-	2.4	-	Y
8C	6x40	0	2-4-2	Y	8	Y	Y	-	-	-	-	Y
8D	6x40	0	2-4-2	Y	8	Y	Y	-	-	-	-	Y

NOTES

- Refer to "Roadway Standard Drawings NCDOT" dated January 2012 and "Standard Specifications for Roads and Structures" dated January 2012.
- Do not program signal for late night flashing operation unless otherwise directed by the Engineer.
- Phase 5 may be lagged.
- Set all detector units to presence mode.
- Pavement markings are existing.
- The metal strain pole foundation will be installed on a slope steeper than 8H:1V.

LEGEND



OASIS 2070 TIMING CHART

FEATURE	PHASE							
	1	2	3	4	5	6	7	8
Min Green 1 *	7	14	7	7	7	14	7	7
Extension 1 *	2.0	6.0	2.0	2.0	2.0	6.0	2.0	2.0
Max Green 1 *	20	100	20	30	20	100	20	30
Yellow Clearance	3.0	5.5	3.0	3.8	3.0	5.5	3.0	4.1
Red Clearance	3.9	1.8	3.6	2.5	4.0	1.8	3.9	1.9
Red Revert	2.0	2.0	2.0	2.0	2.0	2.0	2.0	2.0
Walk 1 *	-	-	-	-	-	-	-	-
Don't Walk 1	-	-	-	-	-	-	-	-
Seconds Per Actuation *	-	1.5	-	-	-	1.5	-	-
Max Variable Initial *	-	46	-	-	-	46	-	-
Time Before Reduction *	-	15	-	-	-	15	-	-
Time To Reduce *	-	45	-	-	-	45	-	-
Minimum Gap	-	3.4	-	-	-	3.4	-	-
Recall Mode	-	MIN RECALL	-	-	-	MIN RECALL	-	-
Vehicle Call Memory	-	YELLOW	-	-	-	YELLOW	-	-
Dual Entry	-	-	-	-	-	-	-	-
Simultaneous Gap	ON	ON	ON	ON	ON	ON	ON	ON

* These values may be field adjusted. Do not adjust Min Green and Extension times for phases 2 and 6 lower than what is shown. Min Green for all other phases should not be lower than 4 seconds.

Signal Upgrade - Final Design

US 221-NC 194
at
US 221 Business-NC 194/NC 163

Division 11 Ashe County near West Jefferson

PLAN DATE: September 2014 REVIEWED BY: Z.M. Little

PREPARED BY: C.L. Sweeney REVIEWED BY:

DocuSigned by:
Z. M. Little
10/14/2014

SIG. INVENTORY NO. 11-0341

750 N. Greenfield Pkwy, Garner, NC 27529

SCALE 0 40
1"=40'

11-0075-2014_017-22
 R:\CADD\11-0075\11-0075.dwg
 C:\Users\csweeney