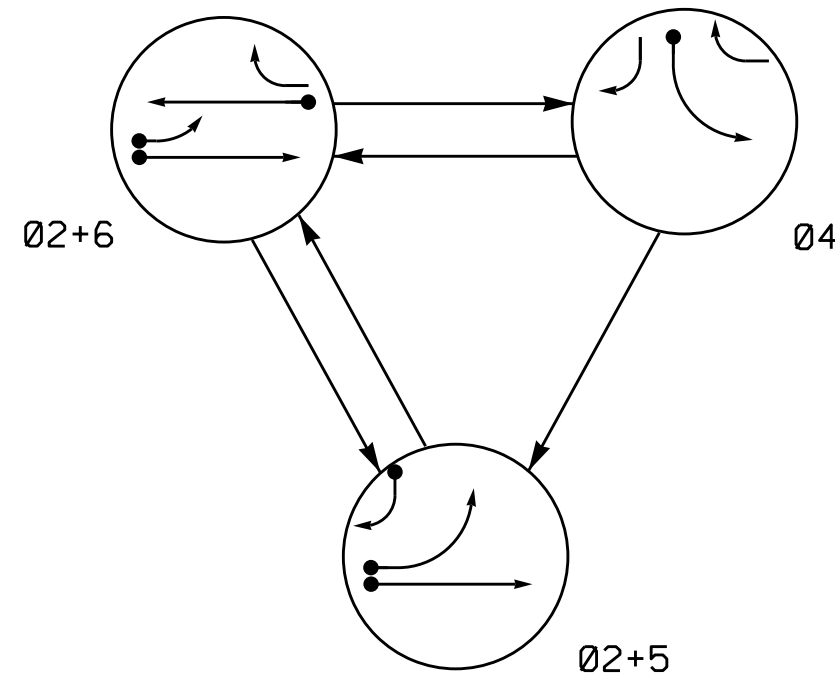


PHASING DIAGRAM

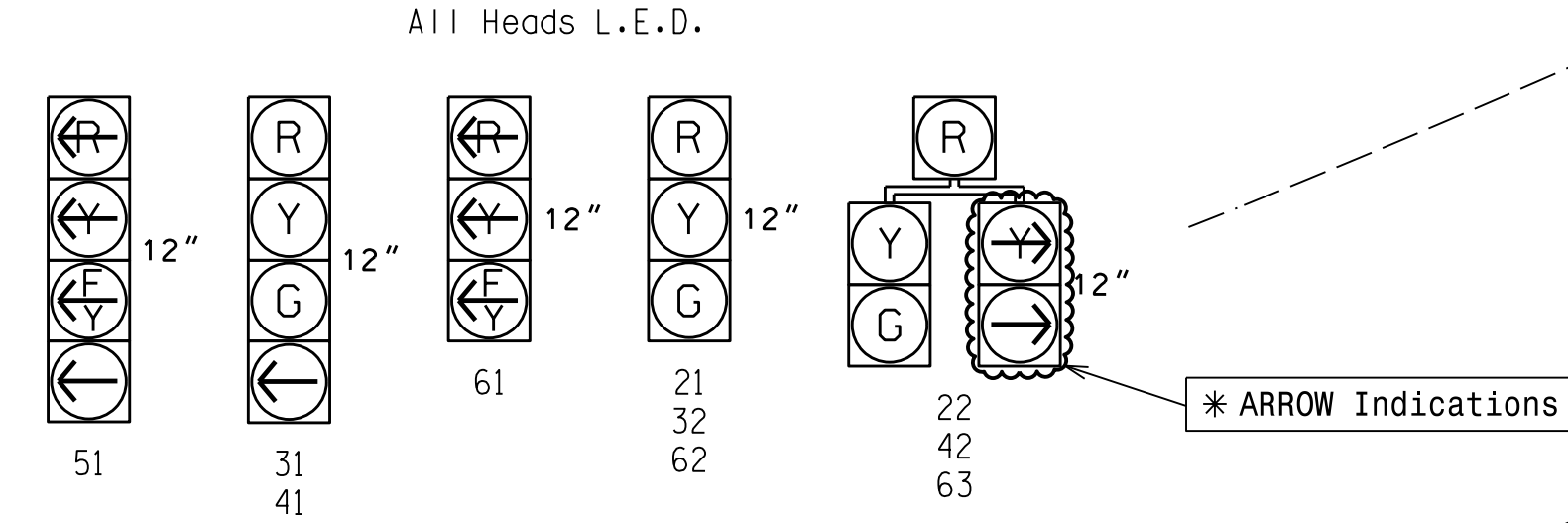


SIGNAL FACE	PHASE			
	Ø 2+5	Ø 2+6	Ø 4	FLASH
21	G	G	R	Y
22	G	G	R	Y
41	R	R	G	R
42	R	R	G	R
51	R	G	R	Y
62	R	G	R	Y
63	R	G	R	Y

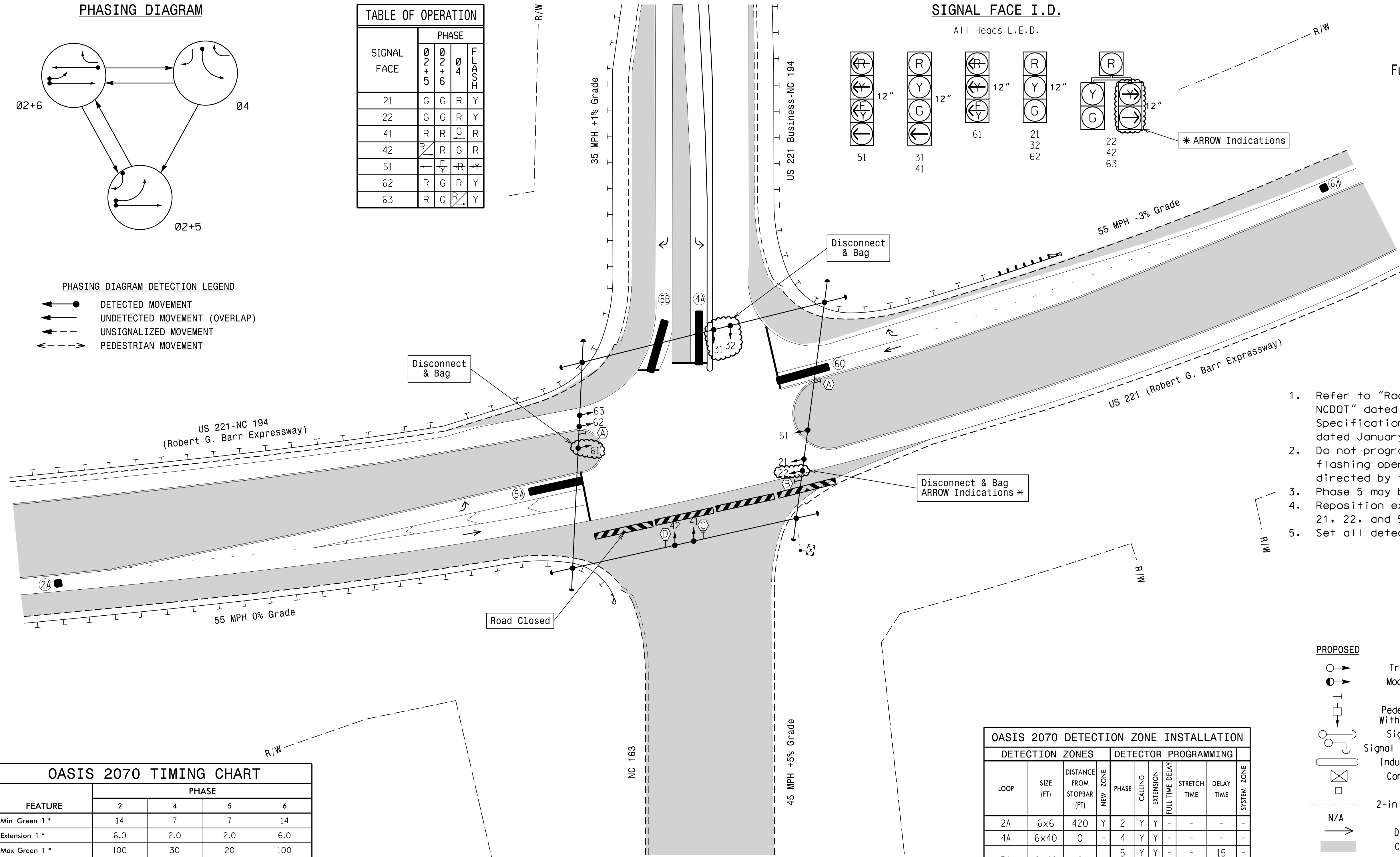
PHASING DIAGRAM DETECTION LEGEND

- ← ● → DETECTED MOVEMENT
- ← ○ → UNDETECTED MOVEMENT (OVERLAP)
- UNSIGNALIZED MOVEMENT
- ← - - - → PEDESTRIAN MOVEMENT

SIGNAL FACE I.D.



3 Phase Fully Actuated Isolated



NOTES

- Refer to "Roadway Standard Drawings NCDOT" dated January 2012 and "Standard Specifications for Roads and Structures" dated January 2012.
- Do not program signal for late night flashing operation unless otherwise directed by the Engineer.
- Phase 5 may be lagged.
- Reposition existing signal heads numbered 21, 22, and 51.
- Set all detector units to presence mode.

LEGEND

- | PROPOSED | EXISTING |
|----------|----------|
| | |
| | |
| | |
| | |
| | |
| | |
| | |
| | |
| | |
| | |
| | |
| | |
| | |
| | |
| | |
| | |
| | |

FEATURE	PHASE			
	2	4	5	6
Min Green 1 *	14	7	7	14
Extension 1 *	6.0	2.0	2.0	6.0
Max Green 1 *	100	30	20	100
Yellow Clearance	5.5	3.0	3.0	5.5
Red Clearance	1.8	3.2	3.8	1.8
Red Revert	2.0	2.0	2.0	2.0
Walk 1 *	-	-	-	-
Don't Walk 1	-	-	-	-
Seconds Per Actuation *	-	-	-	-
Max Variable Initial *	-	-	-	-
Time Before Reduction *	15	-	-	15
Time To Reduce *	45	-	-	45
Minimum Gap	3.4	-	-	3.4
Recall Mode	MIN RECALL	-	-	MIN RECALL
Vehicle Call Memory	YELLOW	-	-	YELLOW
Dual Entry	-	-	-	-
Simultaneous Gap	ON	ON	ON	ON

* These values may be field adjusted. Do not adjust Min Green and Extension times for phases 2 and 6 lower than what is shown. Min Green for all other phases should not be lower than 4 seconds.

OASIS 2070 DETECTION ZONE INSTALLATION									
DETECTION ZONES				DETECTOR PROGRAMMING					
LOOP	SIZE (FT)	DISTANCE FROM STOPBAR (FT)	NEW ZONE	PHASE	CALLING	EXTENSION	STRETCH TIME	DELAY TIME	SYSTEM ZONE
2A	6x6	420	Y	2	Y	Y	-	-	-
4A	6x40	0	-	4	Y	Y	-	-	-
5A	6x40	0	Y	2	Y	Y	-	3	-
5B	6x40	0	-	5	Y	Y	-	15	-
6A	6x6	420	-	6	Y	Y	-	-	-
6C	6x40	0	-	6	Y	Y	2.0	5	-

Signal Upgrade - Temporary Design 3 - TCP Phase III (Step 1)

	<p>US 221-NC 194 at US 221 Business-NC 194/NC 163</p>	
	<p>Division 11 Ashe County near West Jefferson</p>	
<p>750 N. Greenfield Pkwy, Garner, NC 27529</p>	<p>PLANNED BY: C.L. Sweeney</p>	<p>REVIEWED BY: Z.M. Little</p>
<p>SCALE 0 40 1"=40'</p>	<p>REVISIONS</p>	<p>INIT. DATE</p>
<p>DocuSigned by: <i>Zachary M. Little</i> 10/14/2014</p>		<p>DATE</p>
<p>SIG. INVENTORY NO. II-0341 T3</p>		<p>DATE</p>

28 OCT 2014 11:08
 R:\C:\Users\jcs\Documents\Signal Design Section\0341\1034113.asig.dwg...20141007.dgn
 C:\Users\jcs\Documents\Signal Design Section\0341\1034113.asig.dwg...20141007.dgn