
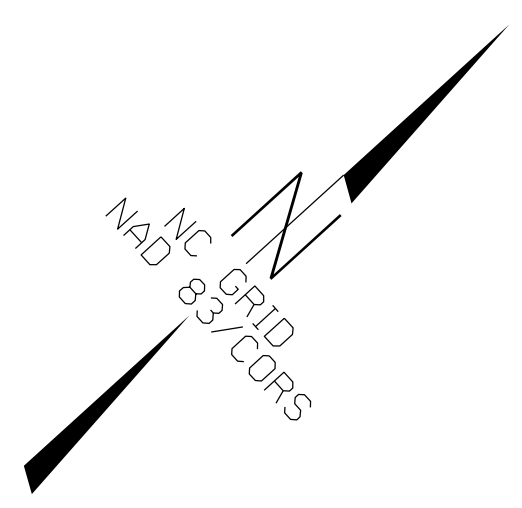


TIP NO. R-2915D	SHEET NO. SIGN-17
APPROVED: <i>Joseph E. Kopaskie</i> SC06EAEF80AS4FA	
DATE: 10/29/2014	
SEAL	

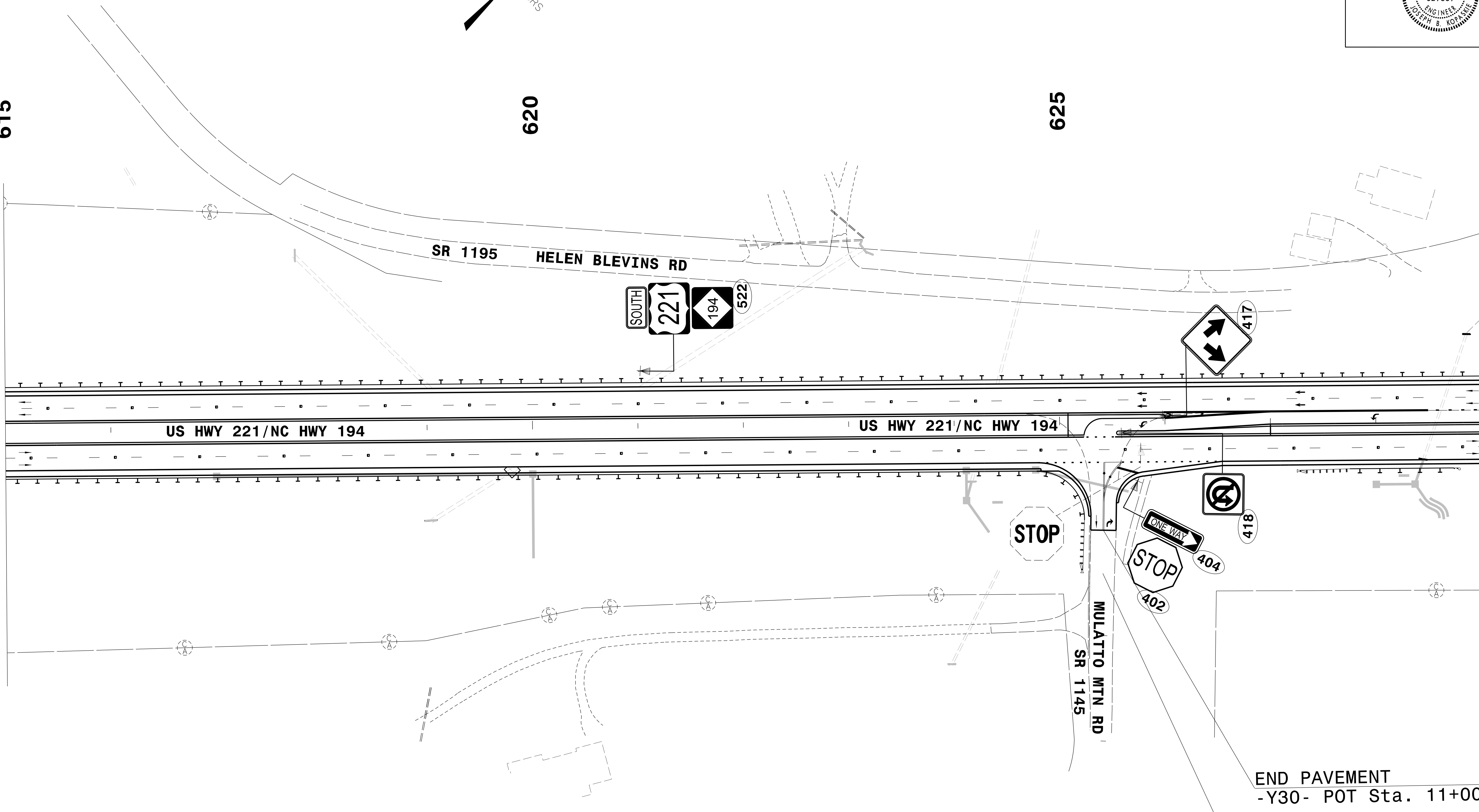


615
BREAK LINE STA. 615+00 SEE SIGN-16



620

625



MATCHLINE Sta. 629+00 - L- SEE SIGN-18

END PAVEMENT
-Y30- POT Sta. 11+00.00

END CONSTRUCTION
-Y30- POT Sta. 11+41.00

**EXISTING & PROPOSED
SIGNING DETAIL**

SYTIME\$\$\$\$
CONDN\$\$\$\$
DUSERNAME\$\$\$\$