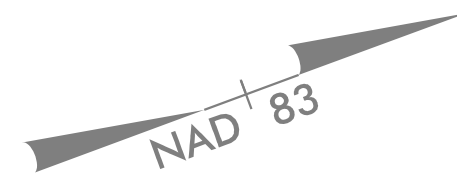
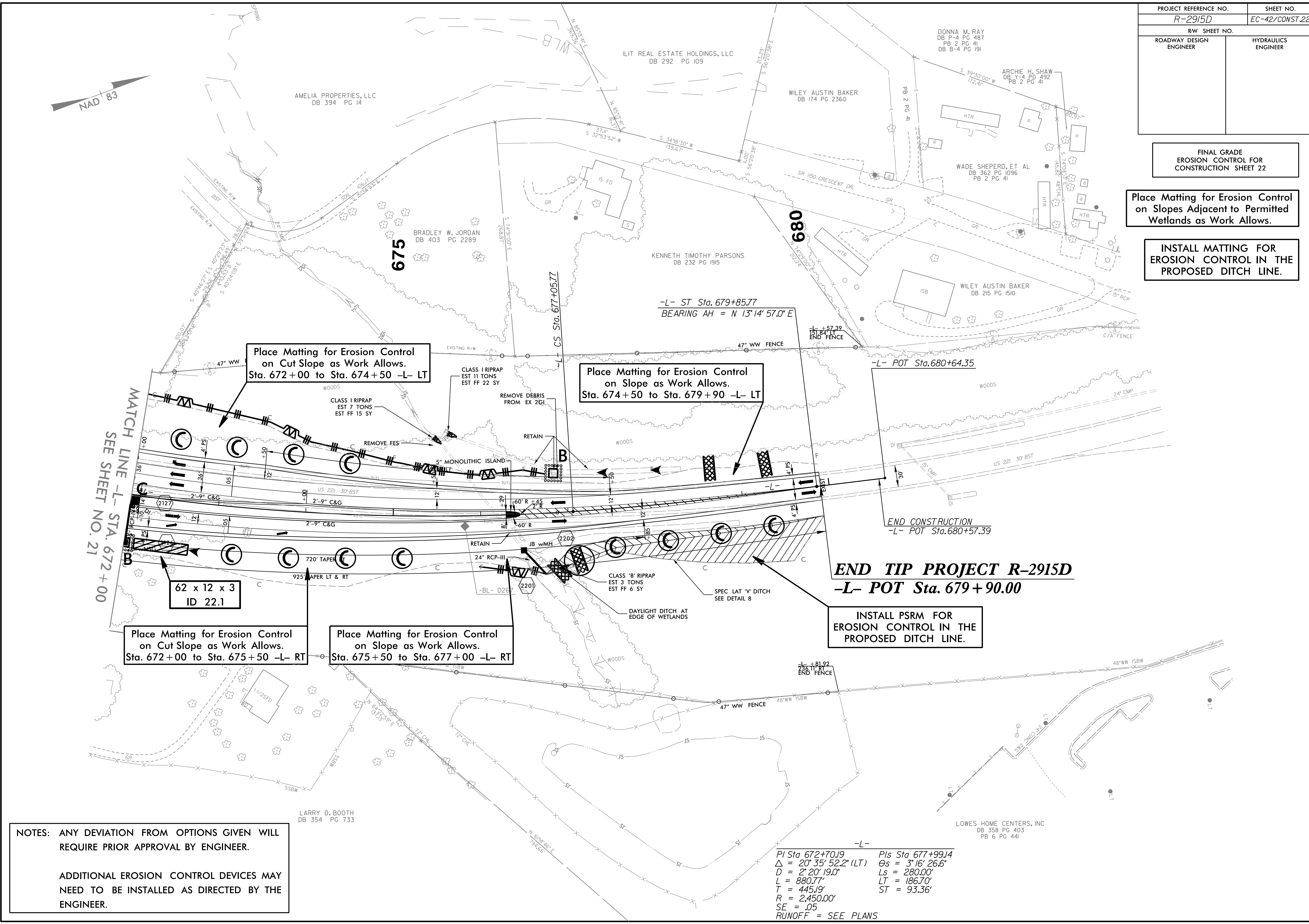


PROJECT REFERENCE NO.	SHEET NO.
R-2915D	EC-42/CONST.22
RW SHEET NO.	
ROADWAY DESIGN ENGINEER	HYDRAULICS ENGINEER

FINAL GRADE
EROSION CONTROL FOR
CONSTRUCTION SHEET 22

Place Matting for Erosion Control
on Slopes Adjacent to Permitted
Wetlands as Work Allows.

INSTALL MATTING FOR
EROSION CONTROL IN THE
PROPOSED DITCH LINE.



MATCH LINE -L- STA. 672+00
SEE SHEET NO. 21

NOTES: ANY DEVIATION FROM OPTIONS GIVEN WILL REQUIRE PRIOR APPROVAL BY ENGINEER.

ADDITIONAL EROSION CONTROL DEVICES MAY NEED TO BE INSTALLED AS DIRECTED BY THE ENGINEER.

-L-
 PI Sta 672+70.19 Pls Sta 677+99.14
 $\Delta = 20^{\circ} 35' 52.2''$ (LT) $\Theta_s = 3^{\circ} 16' 26.6''$
 $D = 2^{\circ} 20' 19.0''$ $L_s = 280.00'$
 $L = 880.77'$ $LT = 186.70'$
 $T = 445.19'$ $ST = 93.36'$
 $R = 2,450.00'$
 $SE = .05$
 RUNOFF = SEE PLANS

END TIP PROJECT R-2915D
-L- POT Sta. 679+90.00

Place Matting for Erosion Control
on Cut Slope as Work Allows.
Sta. 672+00 to Sta. 674+50 -L- LT

Place Matting for Erosion Control
on Slope as Work Allows.
Sta. 674+50 to Sta. 679+90 -L- LT

Place Matting for Erosion Control
on Cut Slope as Work Allows.
Sta. 672+00 to Sta. 675+50 -L- RT

Place Matting for Erosion Control
on Slope as Work Allows.
Sta. 675+50 to Sta. 677+00 -L- RT

INSTALL PSRM FOR
EROSION CONTROL IN THE
PROPOSED DITCH LINE.

62 x 12 x 3
ID 22.1

LARRY D. BOOTH
DB 354 PG 733

LOWES HOME CENTERS, INC
DB 358 PG 403
PB 6 PG 441