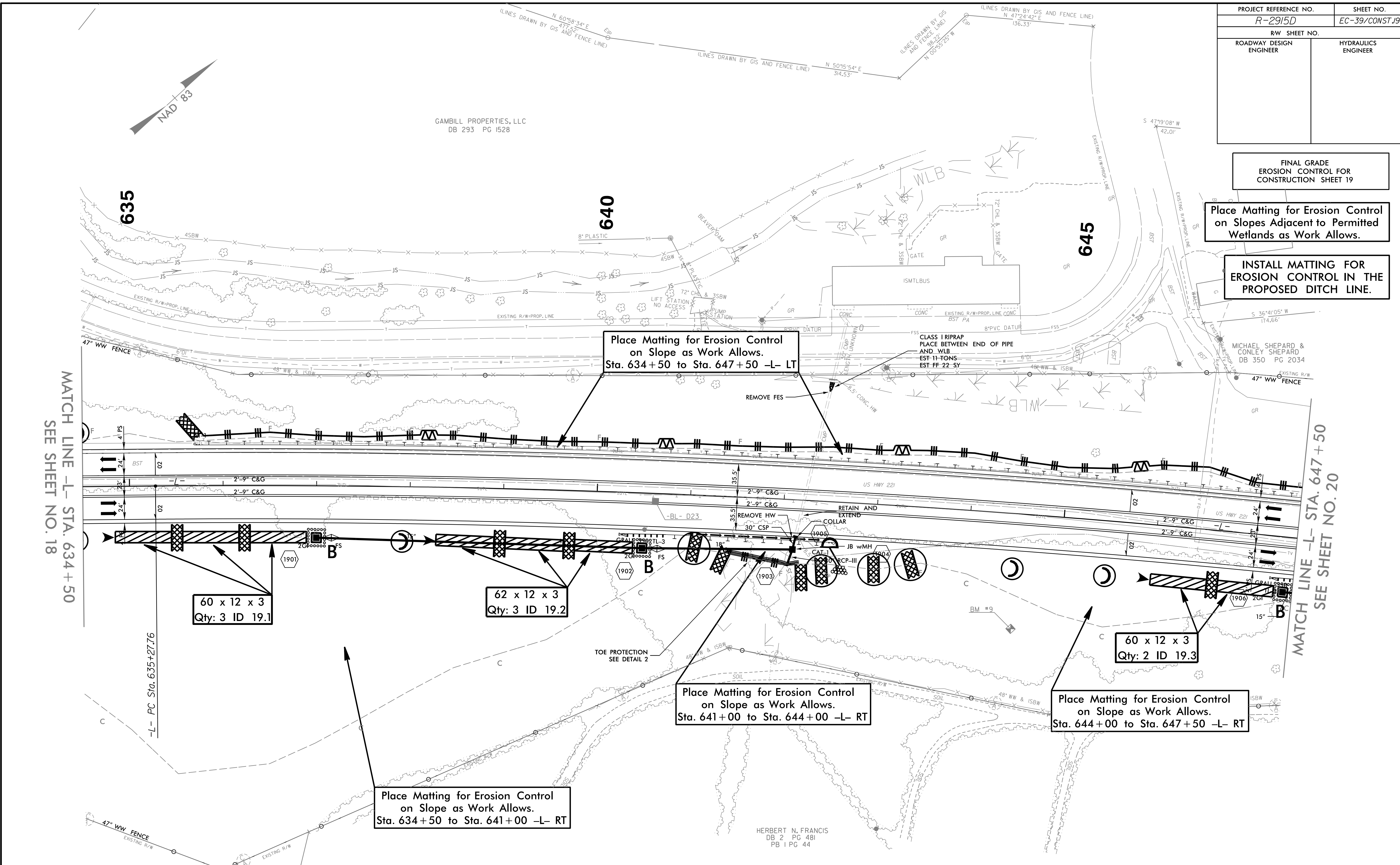


PROJECT REFERENCE NO. <i>R-2915D</i>	SHEET NO. <i>EC-39/CONST 19</i>
RW SHEET NO.	
ROADWAY DESIGN ENGINEER	HYDRAULICS ENGINEER



FINAL GRADE EROSION CONTROL FOR CONSTRUCTION SHEET 19

Place Matting for Erosion Control on Slopes Adjacent to Permitted Wetlands as Work Allows.

INSTALL MATTING FOR EROSION CONTROL IN THE PROPOSED DITCH LINE.

NOTES: ANY DEVIATION FROM OPTIONS GIVEN WILL REQUIRE PRIOR APPROVAL BY ENGINEER.

ADDITIONAL EROSION CONTROL DEVICES MAY NEED TO BE INSTALLED AS DIRECTED BY THE ENGINEER.

-L-
 PI Sta 642+62.40
 $\Delta = 7^{\circ} 32' 21.3" (RT)$
 $D = 0^{\circ} 30' 49.9"$
 $L = 1,467.17'$
 $T = 734.65'$
 $R = 11,150.00'$
 $SE = NC$