

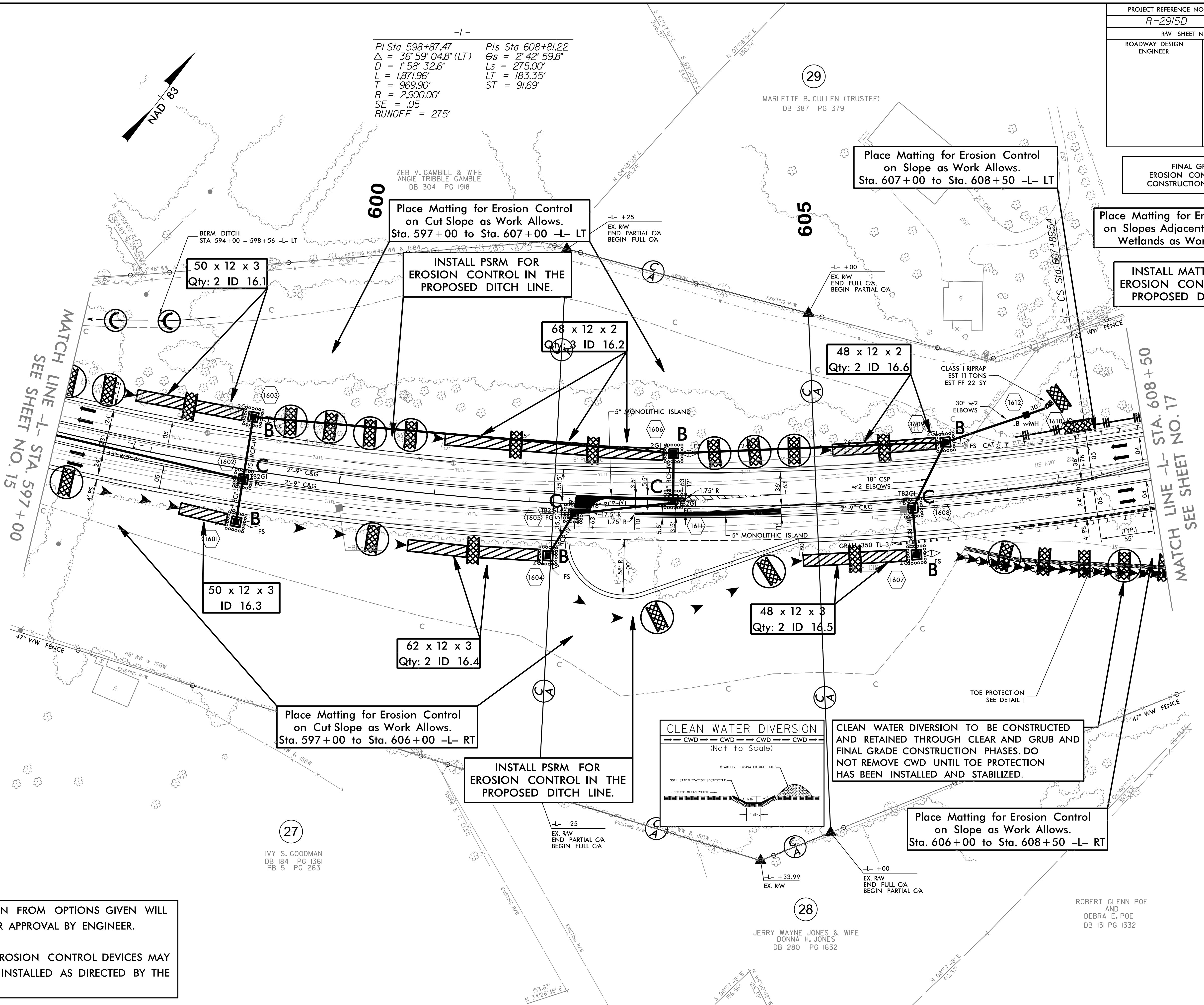
PROJECT REFERENCE NO.	SHEET NO.
R-2915D	EC-36/CONST.16
RW SHEET NO.	
ROADWAY DESIGN ENGINEER	HYDRAULICS ENGINEER

FINAL GRADE  
EROSION CONTROL FOR  
CONSTRUCTION SHEET 16

Place Matting for Erosion Control  
on Slopes Adjacent to Permitted  
Wetlands as Work Allows.

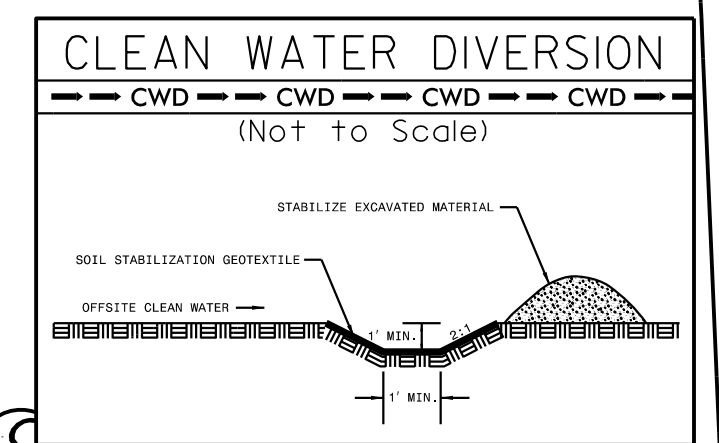
INSTALL MATTING FOR  
EROSION CONTROL IN THE  
PROPOSED DITCH LINE.

-L-  
PI Sta 598+87.47    PIs Sta 608+81.22  
 $\Delta = 36^{\circ} 59' 04.8" (LT)$      $\Theta s = 2^{\circ} 42' 59.8"$   
 $D = 1^{\circ} 58' 32.6"$      $Ls = 275.00'$   
 $L = 1,871.96'$      $LT = 183.35'$   
 $T = 969.90'$      $ST = 91.69'$   
 $R = 2,900.00'$   
 $SE = .05$   
 $RUNOFF = 275'$



MATCH LINE -L- STA. 597+00  
SEE SHEET NO. 15

MATCH LINE -L- STA. 608+50  
SEE SHEET NO. 17



CLEAN WATER DIVERSION TO BE CONSTRUCTED AND RETAINED THROUGH CLEAR AND GRUB AND FINAL GRADE CONSTRUCTION PHASES. DO NOT REMOVE CWD UNTIL TOE PROTECTION HAS BEEN INSTALLED AND STABILIZED.

NOTES: ANY DEVIATION FROM OPTIONS GIVEN WILL REQUIRE PRIOR APPROVAL BY ENGINEER.

ADDITIONAL EROSION CONTROL DEVICES MAY NEED TO BE INSTALLED AS DIRECTED BY THE ENGINEER.

27  
IVY S. GOODMAN  
DB 184 PG 1361  
PB 5 PG 263

28  
JERRY WAYNE JONES & WIFE  
DONNA H. JONES  
DB 280 PG 1632

ROBERT GLENN POE  
AND  
DEBRA E. POE  
DB 131 PG 1332