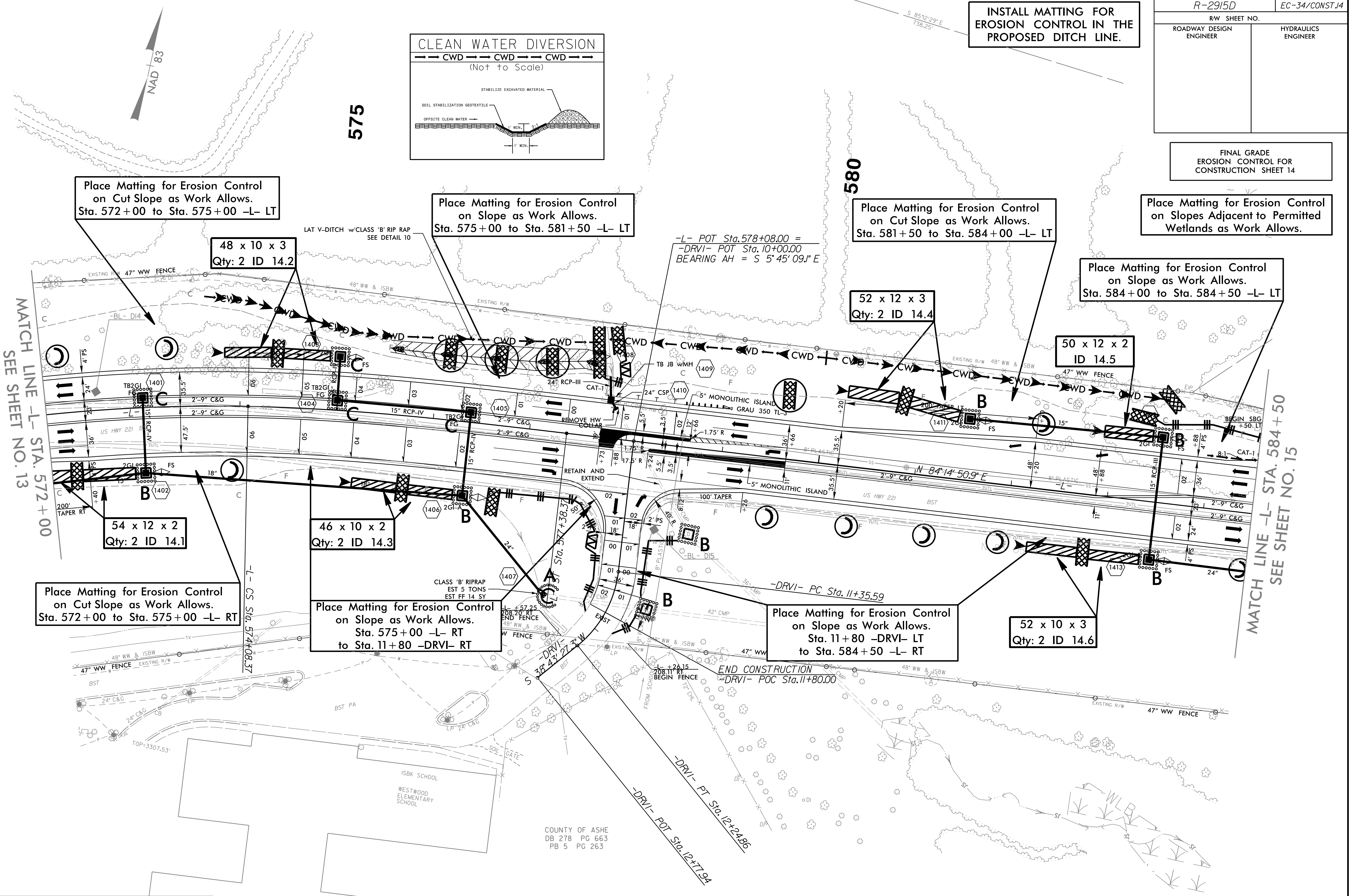
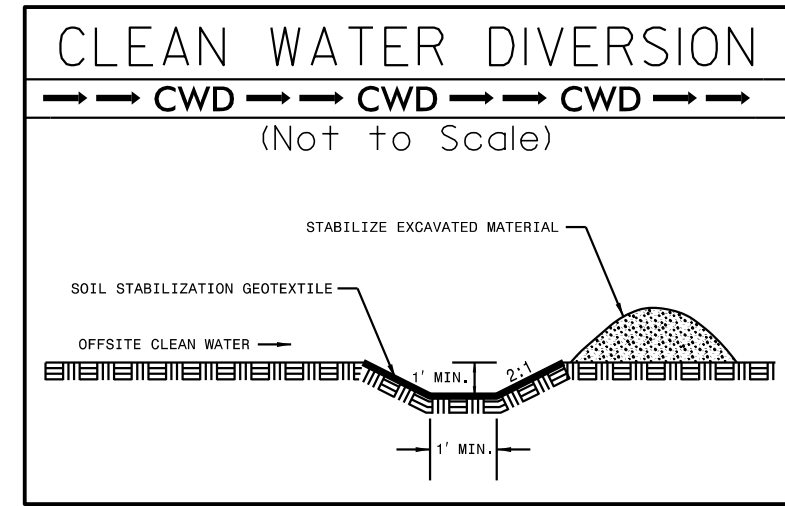


PROJECT REFERENCE NO.	SHEET NO.
R-2915D	EC-34/CONST.14
RW SHEET NO.	
ROADWAY DESIGN ENGINEER	HYDRAULICS ENGINEER

INSTALL MATTING FOR EROSION CONTROL IN THE PROPOSED DITCH LINE.

FINAL GRADE EROSION CONTROL FOR CONSTRUCTION SHEET 14

Place Matting for Erosion Control on Slopes Adjacent to Permitted Wetlands as Work Allows.



MATCH LINE -L- STA. 572+00 SEE SHEET NO. 13

MATCH LINE -L- STA. 584+50 SEE SHEET NO. 15

Place Matting for Erosion Control on Cut Slope as Work Allows. Sta. 572+00 to Sta. 575+00 -L- LT

Place Matting for Erosion Control on Slope as Work Allows. Sta. 575+00 to Sta. 581+50 -L- LT

Place Matting for Erosion Control on Cut Slope as Work Allows. Sta. 581+50 to Sta. 584+00 -L- LT

Place Matting for Erosion Control on Slope as Work Allows. Sta. 584+00 to Sta. 584+50 -L- LT

Place Matting for Erosion Control on Cut Slope as Work Allows. Sta. 572+00 to Sta. 575+00 -L- RT

Place Matting for Erosion Control on Slope as Work Allows. Sta. 575+00 -L- RT to Sta. 11+80 -DRVI- RT

Place Matting for Erosion Control on Slope as Work Allows. Sta. 11+80 -DRVI- LT to Sta. 584+50 -L- RT

NOTES: ANY DEVIATION FROM OPTIONS GIVEN WILL REQUIRE PRIOR APPROVAL BY ENGINEER.

ADDITIONAL EROSION CONTROL DEVICES MAY NEED TO BE INSTALLED AS DIRECTED BY THE ENGINEER.

-L-	-DRVI-
PI Sta 568+99.04	PI Sta 11+82.61
Δ = 35° 30' 55.4" (RT)	Δ = 44° 28' 36.3" (RT)
D = 3' 22' 13.2"	D = 49' 49' 20.7"
L = 1,053.76'	L = 89.27'
T = 544.43'	T = 47.02'
R = 1,700.00'	R = 115.00'
SE = .06	SE = SEE PLANS
RUNOFF = 330'	RUNOFF = SEE PLANS