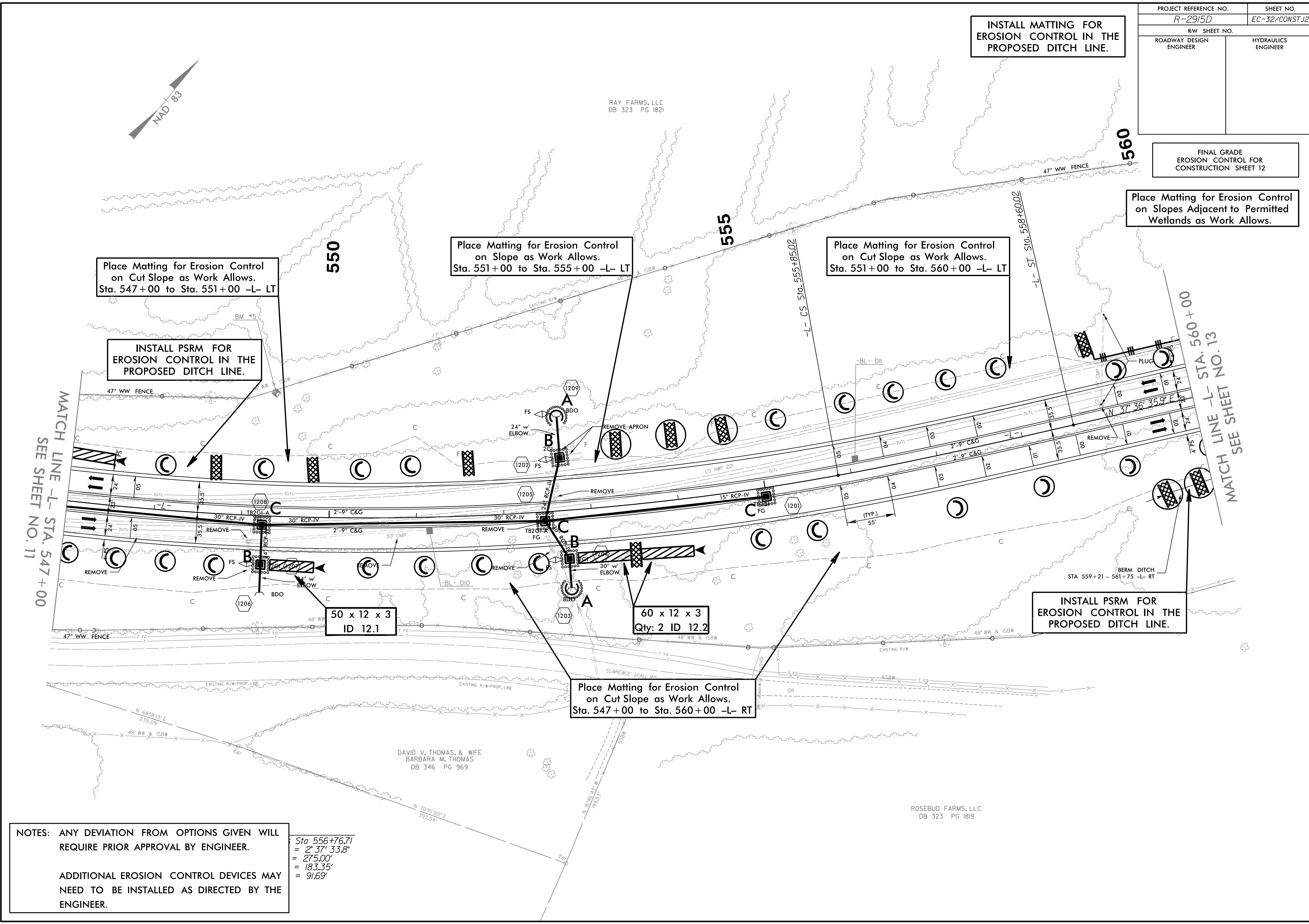


PROJECT REFERENCE NO. <i>R-2915D</i>	SHEET NO. <i>EC-32/CONST.12</i>
RW SHEET NO.	
ROADWAY DESIGN ENGINEER	HYDRAULICS ENGINEER

FINAL GRADE EROSION CONTROL FOR CONSTRUCTION SHEET 12

INSTALL MATTING FOR EROSION CONTROL IN THE PROPOSED DITCH LINE.

Place Matting for Erosion Control on Slopes Adjacent to Permitted Wetlands as Work Allows.



Place Matting for Erosion Control on Cut Slope as Work Allows. Sta. 547+00 to Sta. 551+00 -L- LT

INSTALL PSRM FOR EROSION CONTROL IN THE PROPOSED DITCH LINE.

Place Matting for Erosion Control on Slope as Work Allows. Sta. 551+00 to Sta. 555+00 -L- LT

Place Matting for Erosion Control on Cut Slope as Work Allows. Sta. 551+00 to Sta. 560+00 -L- LT

MATCH LINE -L- STA. 547+00  
SEE SHEET NO. 11

MATCH LINE -L- STA. 560+00  
SEE SHEET NO. 13

50 x 12 x 3  
ID 12.1

60 x 12 x 3  
Qty: 2 ID 12.2

INSTALL PSRM FOR EROSION CONTROL IN THE PROPOSED DITCH LINE.

Place Matting for Erosion Control on Cut Slope as Work Allows. Sta. 547+00 to Sta. 560+00 -L- RT

NOTES: ANY DEVIATION FROM OPTIONS GIVEN WILL REQUIRE PRIOR APPROVAL BY ENGINEER.

ADDITIONAL EROSION CONTROL DEVICES MAY NEED TO BE INSTALLED AS DIRECTED BY THE ENGINEER.

Sta 556+76.71  
= 2' 37" 33.8"  
= 275.00'  
= 183.35'  
= 91.69'

DAVID V. THOMAS, & WIFE  
BARBARA M. THOMAS  
DB 346 PG 969

ROSEBUD FARMS, LLC  
DB 323 PG 1819

RAY FARMS, LLC  
DB 323 PG 1821

