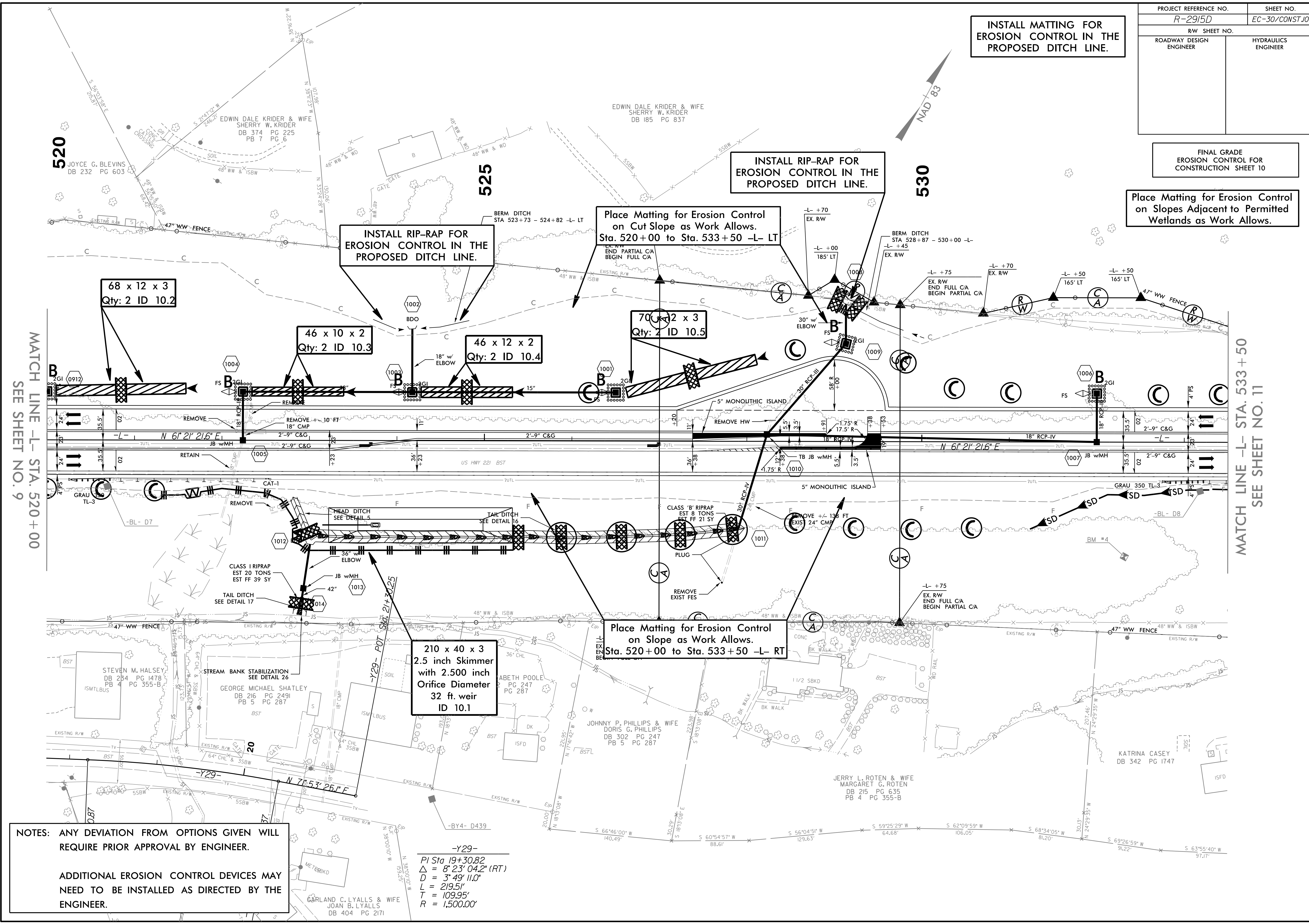


PROJECT REFERENCE NO.	SHEET NO.
R-2915D	EC-30/CONST.10
RW SHEET NO.	HYDRAULICS ENGINEER
ROADWAY DESIGN ENGINEER	

INSTALL MATTING FOR EROSION CONTROL IN THE PROPOSED DITCH LINE.

FINAL GRADE EROSION CONTROL FOR CONSTRUCTION SHEET 10

Place Matting for Erosion Control on Slopes Adjacent to Permitted Wetlands as Work Allows.



MATCH LINE -L- STA. 520+00  
SEE SHEET NO. 9

MATCH LINE -L- STA. 533+50  
SEE SHEET NO. 11

NOTES: ANY DEVIATION FROM OPTIONS GIVEN WILL REQUIRE PRIOR APPROVAL BY ENGINEER.

ADDITIONAL EROSION CONTROL DEVICES MAY NEED TO BE INSTALLED AS DIRECTED BY THE ENGINEER.

210 x 40 x 3  
2.5 inch Skimmer  
with 2.500 inch  
Orifice Diameter  
32 ft. weir  
ID 10.1

INSTALL RIP-RAP FOR EROSION CONTROL IN THE PROPOSED DITCH LINE.

Place Matting for Erosion Control on Cut Slope as Work Allows.  
Sta. 520+00 to Sta. 533+50 -L- LT

INSTALL RIP-RAP FOR EROSION CONTROL IN THE PROPOSED DITCH LINE.

Place Matting for Erosion Control on Slope as Work Allows.  
Sta. 520+00 to Sta. 533+50 -L- RT

68 x 12 x 3  
Qty: 2 ID 10.2

46 x 10 x 2  
Qty: 2 ID 10.3

46 x 12 x 2  
Qty: 2 ID 10.4

70 x 12 x 3  
Qty: 4 ID 10.5

-Y29-  
PI Sta 19+30.82  
Δ = 8' 23" 04.2" (RT)  
D = 3' 49" 11.0"  
L = 219.5'  
T = 109.95'  
R = 1,500.00'