

PROJECT REFERENCE NO.	SHEET NO.
R-2915D	EC-29/CONST.09
RW SHEET NO.	
ROADWAY DESIGN ENGINEER	HYDRAULICS ENGINEER

FINAL GRADE
EROSION CONTROL FOR
CONSTRUCTION SHEET 09

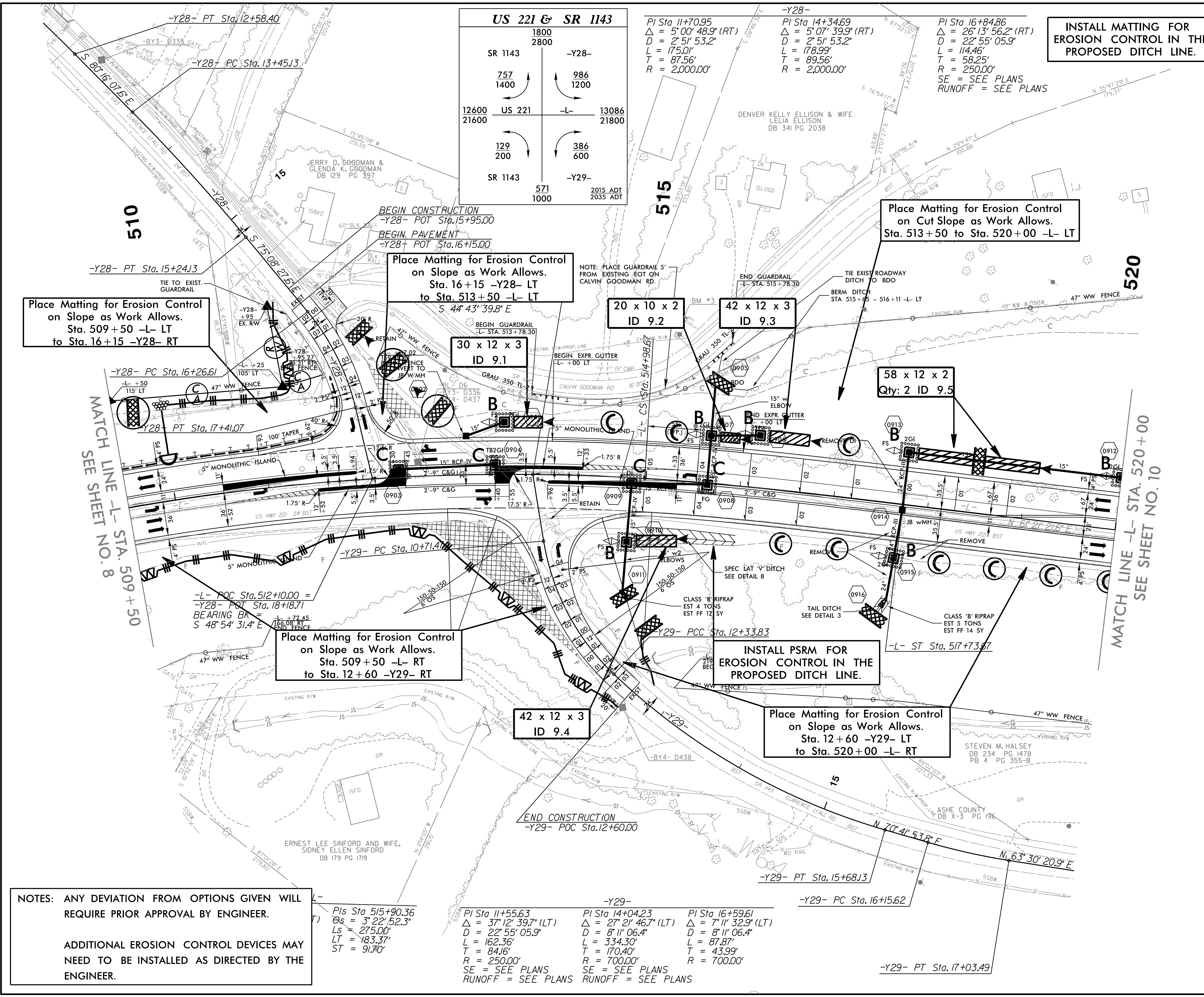
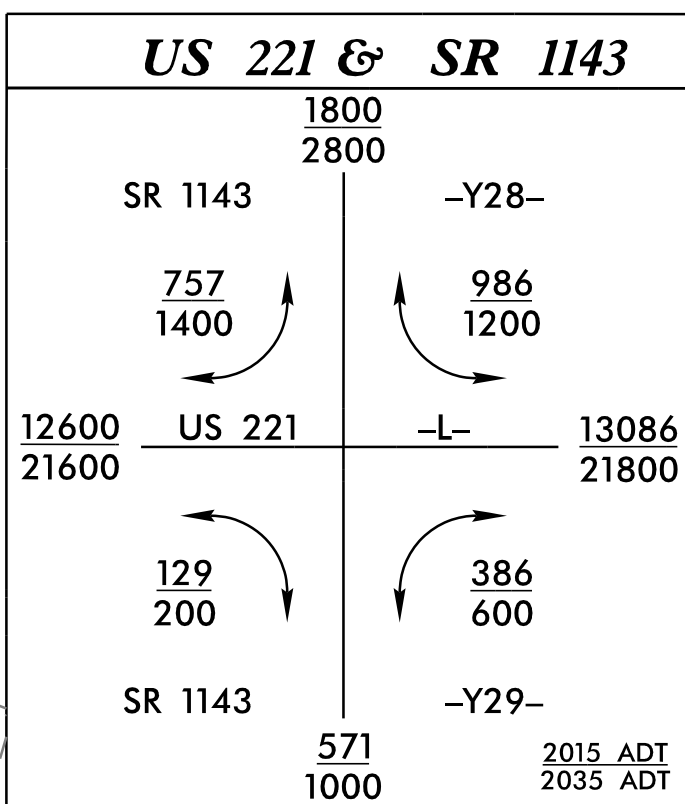
Place Matting for Erosion Control
on Slopes Adjacent to Permitted
Wetlands as Work Allows.

INSTALL MATTING FOR
EROSION CONTROL IN THE
PROPOSED DITCH LINE.

PI Sta 16+84.86
Δ = 26°13'56.2" (RT)
D = 22°55'05.9"
L = 114.46'
T = 58.25'
R = 250.00'
SE = SEE PLANS
RUNOFF = SEE PLANS

PI Sta 14+34.69
Δ = 5°07'39.9" (RT)
D = 2°51'53.2"
L = 178.99'
T = 89.56'
R = 2,000.00'

PI Sta 11+70.95
Δ = 5°00'48.9" (RT)
D = 2°51'53.2"
L = 175.01'
T = 87.56'
R = 2,000.00'



Place Matting for Erosion Control
on Slope as Work Allows.
Sta. 509+50 -L- LT
to Sta. 16+15 -Y28- RT

Place Matting for Erosion Control
on Slope as Work Allows.
Sta. 16+15 -Y28- LT
to Sta. 513+50 -L- LT

Place Matting for Erosion Control
on Cut Slope as Work Allows.
Sta. 513+50 to Sta. 520+00 -L- LT

Place Matting for Erosion Control
on Slope as Work Allows.
Sta. 509+50 -L- RT
to Sta. 12+60 -Y29- RT

INSTALL PSRM FOR
EROSION CONTROL IN THE
PROPOSED DITCH LINE.

Place Matting for Erosion Control
on Slope as Work Allows.
Sta. 12+60 -Y29- LT
to Sta. 520+00 -L- RT

NOTES: ANY DEVIATION FROM OPTIONS GIVEN WILL
REQUIRE PRIOR APPROVAL BY ENGINEER.

ADDITIONAL EROSION CONTROL DEVICES MAY
NEED TO BE INSTALLED AS DIRECTED BY THE
ENGINEER.

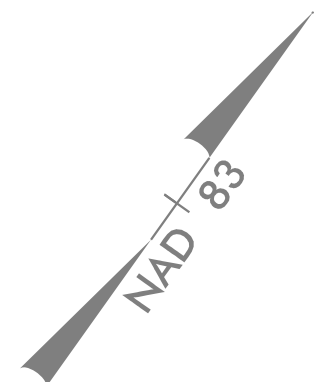
PIs Sta 515+90.36
Θs = 3°22'52.3"
Ls = 275.00'
LT = 183.37'
ST = 91.70'

PI Sta 11+55.63
Δ = 37°12'39.7" (LT)
D = 22°55'05.9"
L = 162.36'
T = 84.16'
R = 250.00'
SE = SEE PLANS
RUNOFF = SEE PLANS

PI Sta 14+04.23
Δ = 27°21'46.7" (LT)
D = 8°11'06.4"
L = 334.30'
T = 170.40'
R = 700.00'
SE = SEE PLANS
RUNOFF = SEE PLANS

PI Sta 16+59.61
Δ = 7°11'32.9" (LT)
D = 8°11'06.4"
L = 87.87'
T = 43.99'
R = 700.00'
SE = SEE PLANS
RUNOFF = SEE PLANS

-Y29- PT Sta. 17+03.49



MATCH LINE -L- STA. 509+50
SEE SHEET NO. 8

MATCH LINE -L- STA. 520+00
SEE SHEET NO. 10