

PROJECT REFERENCE NO.	SHEET NO.
R-2915D	EC-28/CONST.08
RW SHEET NO.	
ROADWAY DESIGN ENGINEER	HYDRAULICS ENGINEER

FINAL GRADE
EROSION CONTROL FOR
CONSTRUCTION SHEET 08

Place Matting for Erosion Control
on Slopes Adjacent to Permitted
Wetlands as Work Allows.

INSTALL MATTING FOR
EROSION CONTROL IN THE
PROPOSED DITCH LINE.

INSTALL RIP-RAP FOR
EROSION CONTROL IN THE
PROPOSED DITCH LINE.

Place Matting for Erosion Control
on Slope as Work Allows.
Sta. 497+50 to Sta. 502+50 -L- LT

Place Matting for Erosion Control
on Slope as Work Allows.
Sta. 502+50 to Sta. 509+50 -L- LT

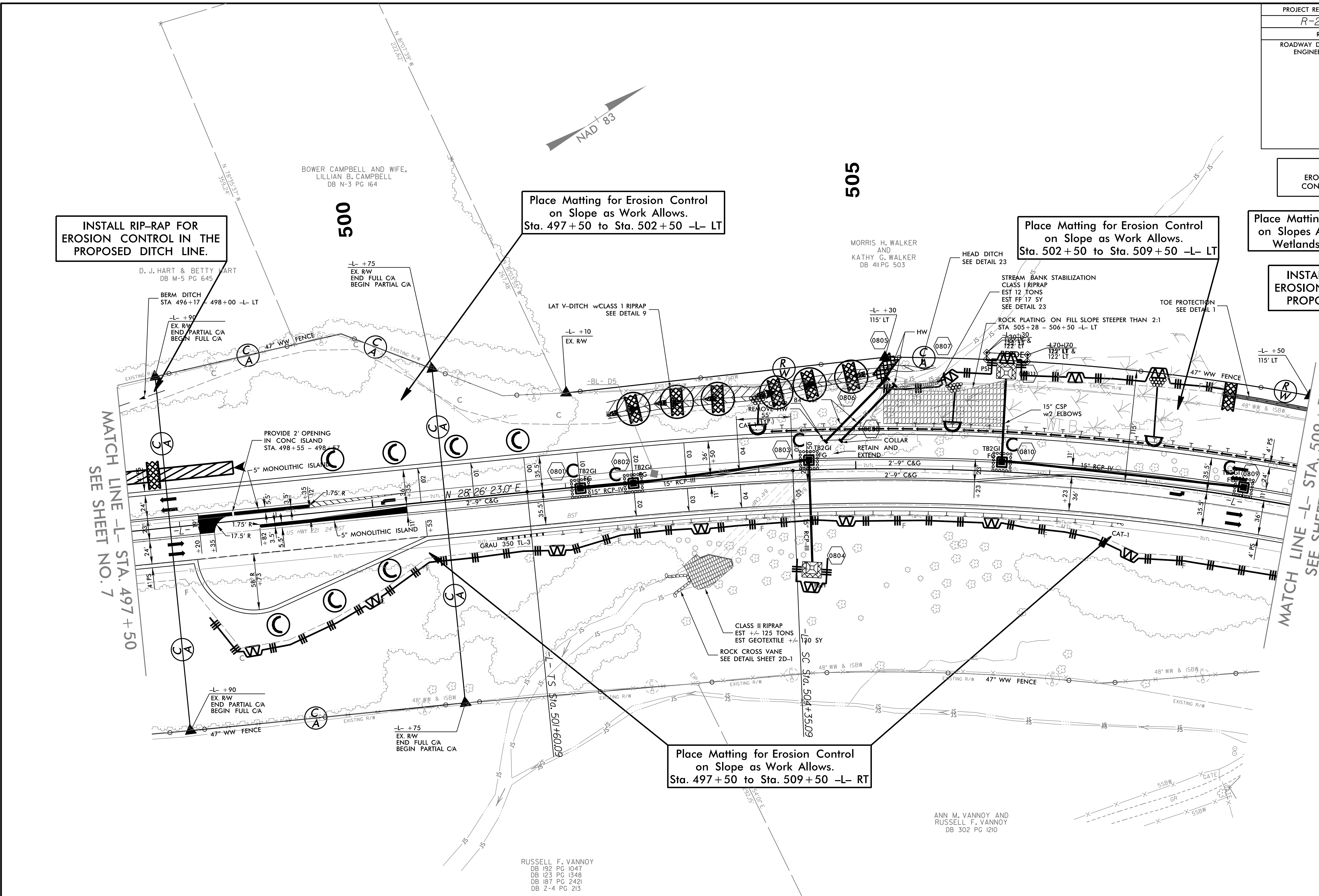
Place Matting for Erosion Control
on Slope as Work Allows.
Sta. 497+50 to Sta. 509+50 -L- RT

NOTES: ANY DEVIATION FROM OPTIONS GIVEN WILL
REQUIRE PRIOR APPROVAL BY ENGINEER.

ADDITIONAL EROSION CONTROL DEVICES MAY
NEED TO BE INSTALLED AS DIRECTED BY THE
ENGINEER.

-L-

PI Sta 503+43.45	PI Sta 509+76.31
$\Delta s = 3' 22" 52.3"$	$\Delta = 26' 09" 14.0" (RT)$
$Ls = 275.00'$	$D = 2' 27" 32.6"$
$LT = 183.37'$	$L = 1,063.58'$
$ST = 91.70'$	$T = 541.22'$
	$R = 2,330.00'$
	$SE = .05$
	$RUNOFF = 275'$



RUSSELL F. VANNOY
DB 192 PG 1047
DB 123 PG 1348
DB 187 PG 2421
DB Z-4 PG 213

ANN M. VANNOY AND
RUSSELL F. VANNOY
DB 302 PG 1210