

PROJECT REFERENCE NO.	SHEET NO.
R-2915D	EC-24/CONST.04
RW SHEET NO.	
ROADWAY DESIGN ENGINEER	HYDRAULICS ENGINEER

FINAL GRADE
EROSION CONTROL FOR
CONSTRUCTION SHEET 04

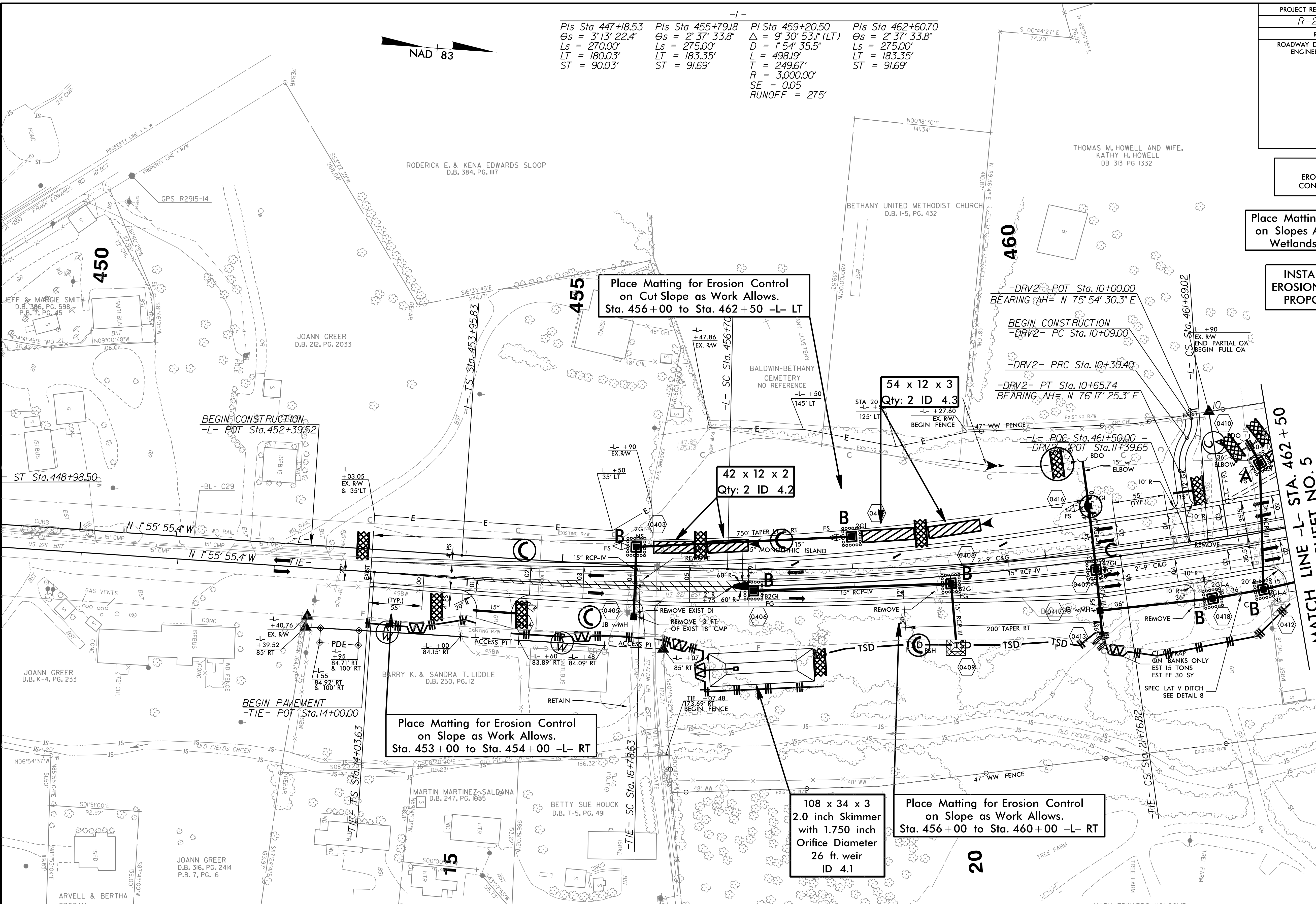
Place Matting for Erosion Control
on Slopes Adjacent to Permitted
Wetlands as Work Allows.

INSTALL MATTING FOR
EROSION CONTROL IN THE
PROPOSED DITCH LINE.

-L-

Pls Sta 447+18.53 Os = 3°13' 22.4" Ls = 270.00' LT = 180.03' ST = 90.03'	Pls Sta 455+79.18 Os = 2°37' 33.8" Ls = 275.00' LT = 183.35' ST = 91.69'	Pls Sta 459+20.50 Δ = 9°30' 53.1" (LT) D = 1°54' 35.5" L = 498.19' T = 249.67' R = 3,000.00' SE = 0.05 RUNOFF = 275'	Pls Sta 462+60.70 Os = 2°37' 33.8" Ls = 275.00' LT = 183.35' ST = 91.69'
--	--	---	--

NAD 83



NOTES: ANY DEVIATION FROM OPTIONS GIVEN WILL REQUIRE PRIOR APPROVAL BY ENGINEER.

ADDITIONAL EROSION CONTROL DEVICES MAY NEED TO BE INSTALLED AS DIRECTED BY THE ENGINEER.

-TIE-

Pls Sta 15+86.98 Os = 2°37' 33.8" Ls = 275.00' LT = 183.35' ST = 91.69'	Pls Sta 19+28.30 Δ = 9°30' 53.1" (LT) D = 1°54' 35.5" L = 498.19' T = 249.67' R = 3,000.00' SE = 0.05 RUNOFF = 275'	Pls Sta 22+68.50 Os = 2°37' 33.8" Ls = 275.00' LT = 183.35' ST = 91.69'
---	--	---

-DRV2-

Pls Sta 10+20.18 Δ = 40°52' 27.5" (RT) D = 190°59' 09.4" L = 21.40' T = 11.8' R = 30.00'	Pls Sta 10+48.84 Δ = 40°29' 32.5" (LT) D = 114°35' 29.6" L = 35.34' T = 18.44' R = 50.00'
---	--

MATCH LINE -L- STA. 462+50
SEE SHEET NO. 5