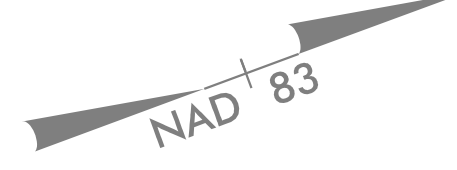
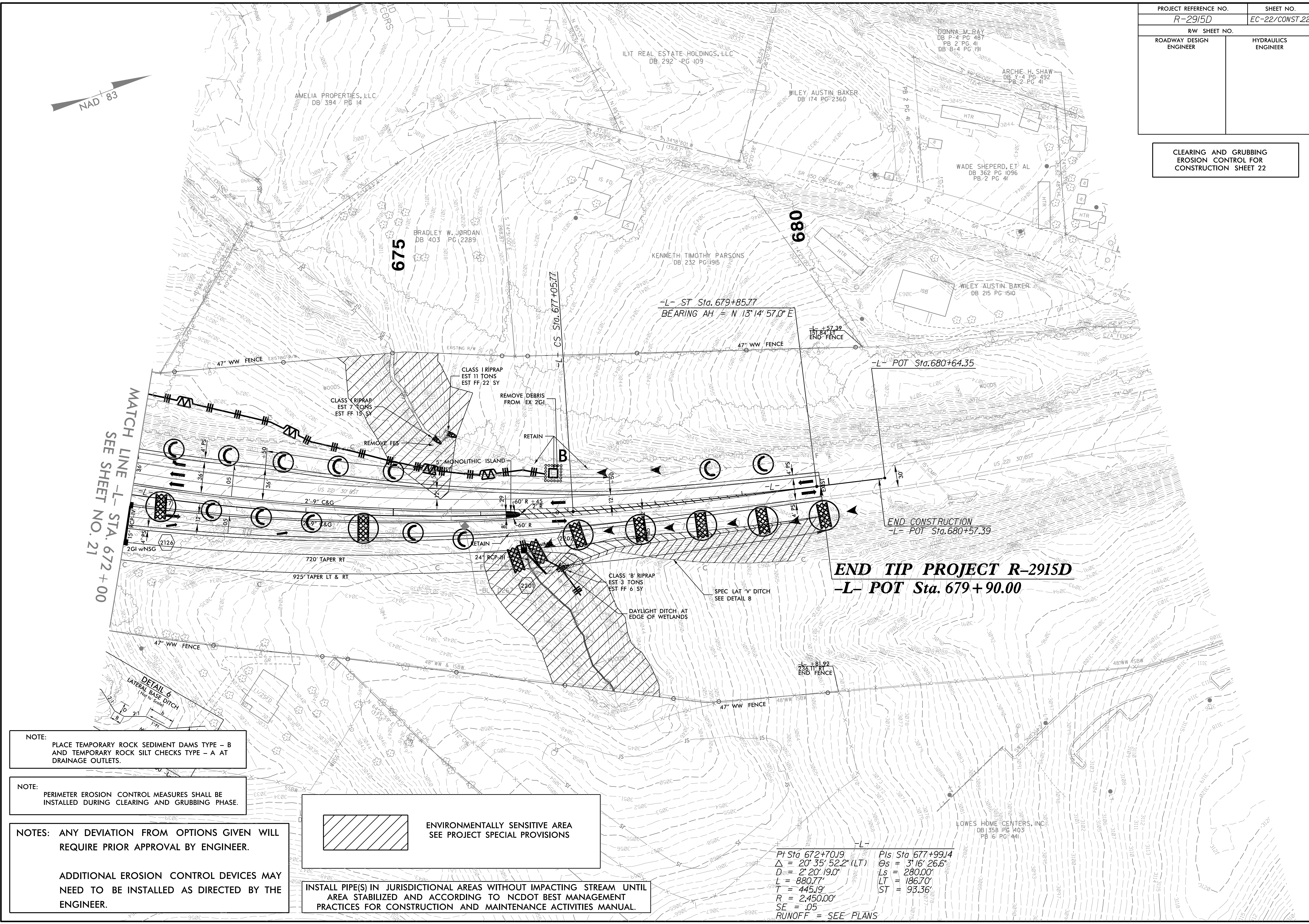


PROJECT REFERENCE NO.	SHEET NO.
R-2915D	EC-22/CONST.22
RW SHEET NO.	
ROADWAY DESIGN ENGINEER	HYDRAULICS ENGINEER

CLEARING AND GRUBBING
EROSION CONTROL FOR
CONSTRUCTION SHEET 22



MATCH LINE -L- STA. 672+00
SEE SHEET NO. 21

END TIP PROJECT R-2915D
-L- POT Sta. 679+90.00

NOTE:
PLACE TEMPORARY ROCK SEDIMENT DAMS TYPE - B
AND TEMPORARY ROCK SILT CHECKS TYPE - A AT
DRAINAGE OUTLETS.

NOTE:
PERIMETER EROSION CONTROL MEASURES SHALL BE
INSTALLED DURING CLEARING AND GRUBBING PHASE.

NOTES: ANY DEVIATION FROM OPTIONS GIVEN WILL
REQUIRE PRIOR APPROVAL BY ENGINEER.

ADDITIONAL EROSION CONTROL DEVICES MAY
NEED TO BE INSTALLED AS DIRECTED BY THE
ENGINEER.

ENVIRONMENTALLY SENSITIVE AREA
SEE PROJECT SPECIAL PROVISIONS

INSTALL PIPE(S) IN JURISDICTIONAL AREAS WITHOUT IMPACTING STREAM UNTIL
AREA STABILIZED AND ACCORDING TO NCDOT BEST MANAGEMENT
PRACTICES FOR CONSTRUCTION AND MAINTENANCE ACTIVITIES MANUAL.

$PI\ Sta\ 672+70.19$
 $\Delta = 20^{\circ} 35' 52.2" (LT)$
 $D = 2' 20.190"$
 $L = 880.77'$
 $T = 445.19'$
 $R = 2,450.00'$
 $SE = .05$
 RUNOFF = SEE PLANS

$PI\ Sta\ 677+99.14$
 $\Delta = 31^{\circ} 16' 26.6"$
 $L_s = 280.00'$
 $LT = 186.70'$
 $ST = 93.36'$