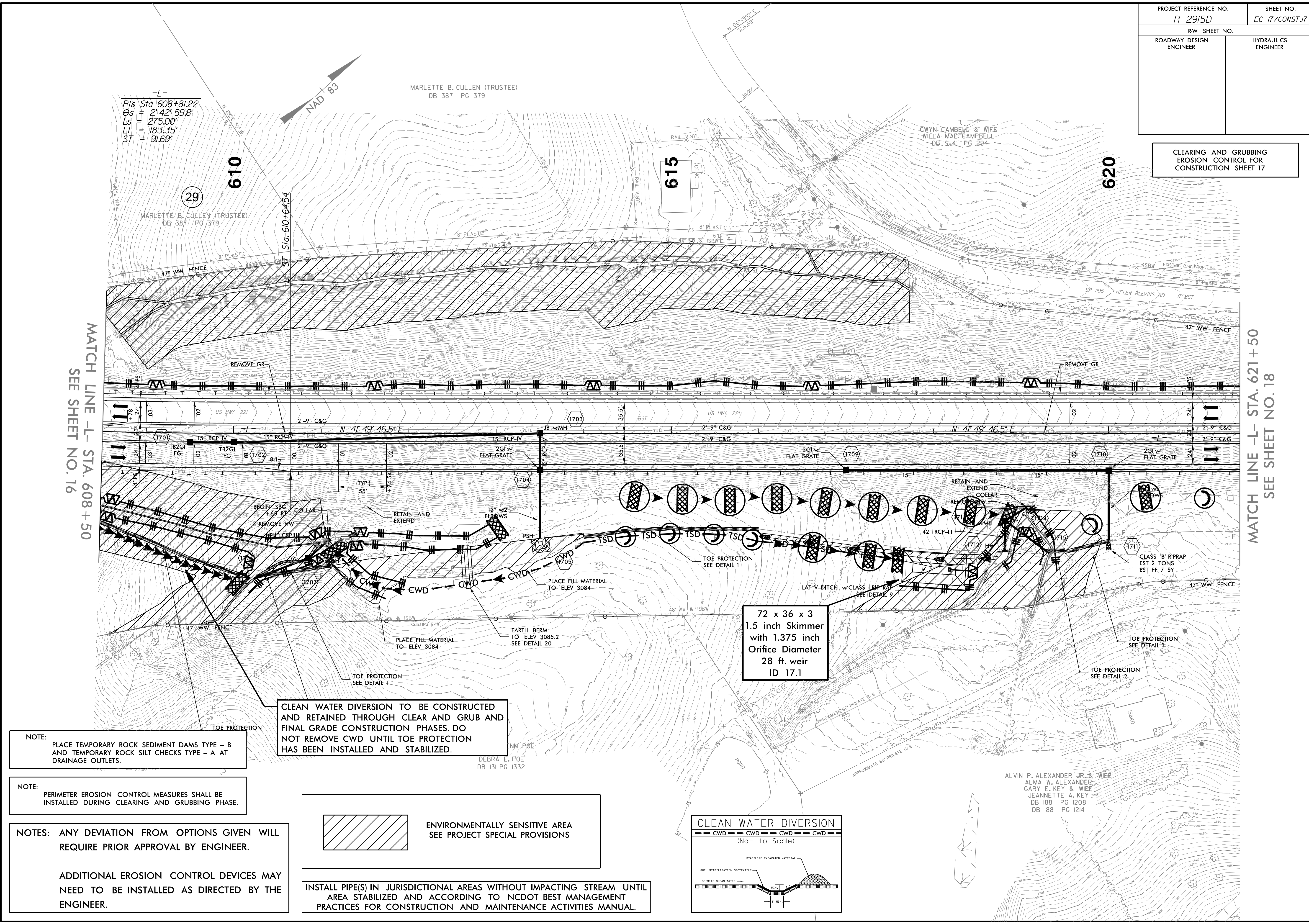


PROJECT REFERENCE NO.	SHEET NO.
R-2915D	EC-17/CONST.17
RW SHEET NO.	
ROADWAY DESIGN ENGINEER	HYDRAULICS ENGINEER

CLEARING AND GRUBBING
EROSION CONTROL FOR
CONSTRUCTION SHEET 17



MATCH LINE -L- STA. 608+50
SEE SHEET NO. 16

MATCH LINE -L- STA. 621+50
SEE SHEET NO. 18

NOTE:
PLACE TEMPORARY ROCK SEDIMENT DAMS TYPE - B AND TEMPORARY ROCK SILT CHECKS TYPE - A AT DRAINAGE OUTLETS.

NOTE:
PERIMETER EROSION CONTROL MEASURES SHALL BE INSTALLED DURING CLEARING AND GRUBBING PHASE.

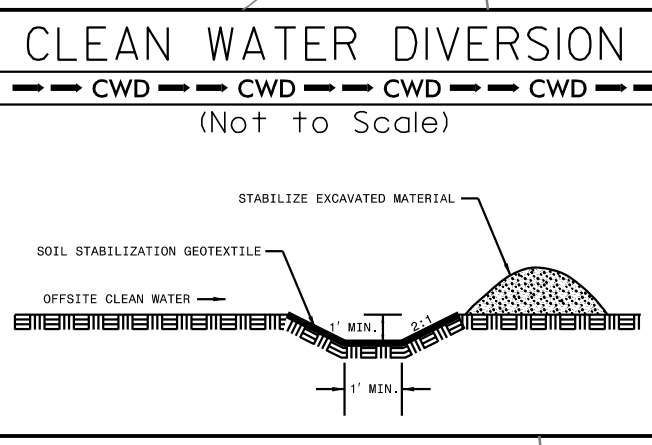
NOTES: ANY DEVIATION FROM OPTIONS GIVEN WILL REQUIRE PRIOR APPROVAL BY ENGINEER.

ADDITIONAL EROSION CONTROL DEVICES MAY NEED TO BE INSTALLED AS DIRECTED BY THE ENGINEER.

CLEAN WATER DIVERSION TO BE CONSTRUCTED AND RETAINED THROUGH CLEAR AND GRUB AND FINAL GRADE CONSTRUCTION PHASES. DO NOT REMOVE CWD UNTIL TOE PROTECTION HAS BEEN INSTALLED AND STABILIZED.

ENVIRONMENTALLY SENSITIVE AREA
SEE PROJECT SPECIAL PROVISIONS

INSTALL PIPE(S) IN JURISDICTIONAL AREAS WITHOUT IMPACTING STREAM UNTIL AREA STABILIZED AND ACCORDING TO NCDOT BEST MANAGEMENT PRACTICES FOR CONSTRUCTION AND MAINTENANCE ACTIVITIES MANUAL.



72 x 36 x 3
1.5 inch Skimmer
with 1.375 inch
Orifice Diameter
28 ft. weir
ID 17.1

ALVIN P. ALEXANDER JR. & WIFE
ALMA W. ALEXANDER
GARY E. KEY & WIFE
JEANNETTE A. KEY
DB 188 PG 1208
DB 188 PG 1214

-L-
Pls Sta 608+81.22
Os = 2' 42" 59.8"
Ls = 275.00'
LT = 183.35'
ST = 91.69'

MARLETTE B. CULLEN (TRUSTEE)
DB 387 PG 379

GWYN CAMPBELL & WIFE
WILLA MAE CAMPBELL
DB 54 PG 294

DEBRA E. POE
DB 131 PG 1332