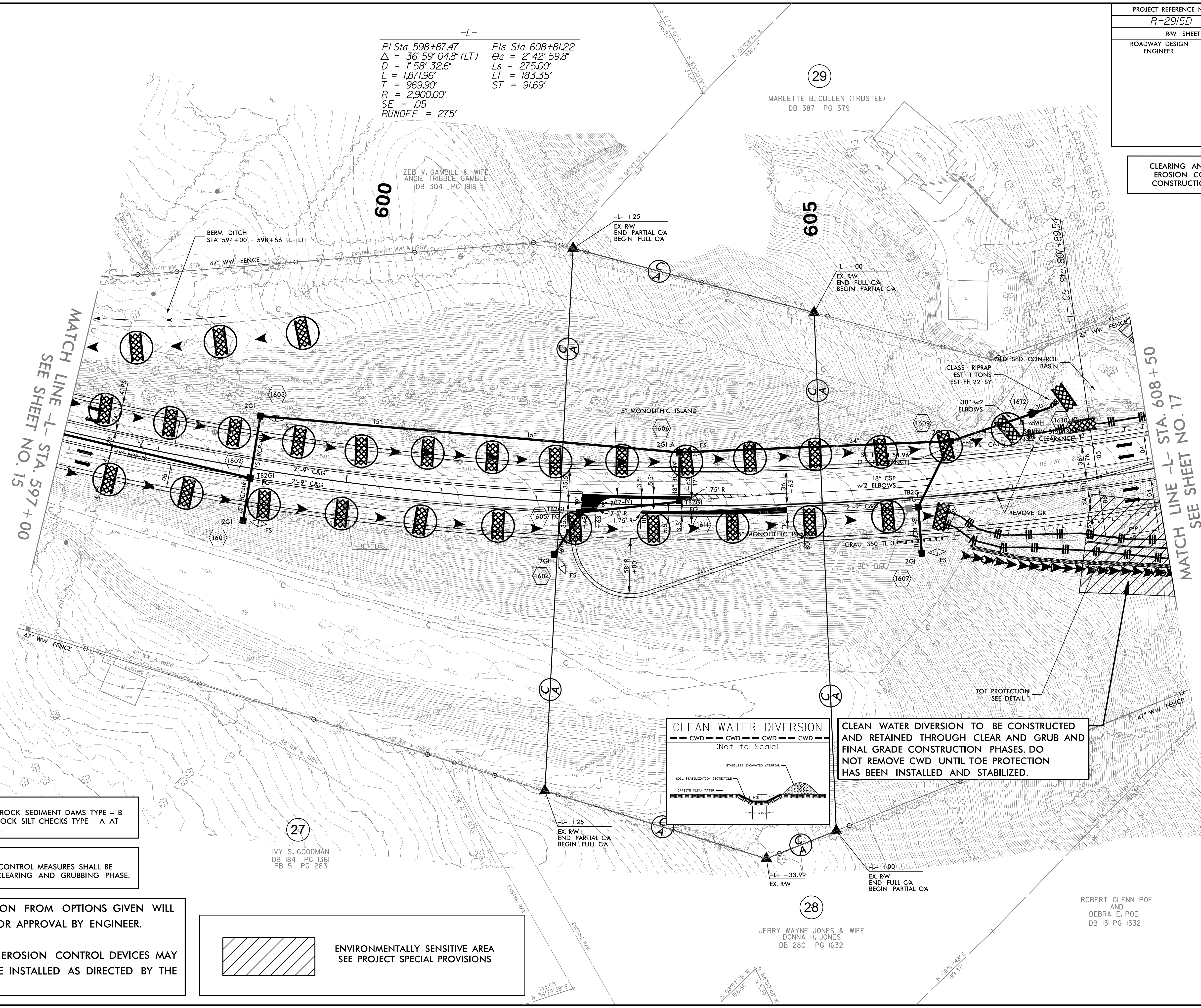


PROJECT REFERENCE NO.	SHEET NO.
R-2915D	EC-16/CONST.16
RW SHEET NO.	
ROADWAY DESIGN ENGINEER	HYDRAULICS ENGINEER

CLEARING AND GRUBBING EROSION CONTROL FOR CONSTRUCTION SHEET 16

-L-
 PI Sta 598+87.47 PIs Sta 608+81.22
 $\Delta = 36^{\circ} 59' 04.8''$ (LT) $\Theta_s = 2^{\circ} 42' 59.8''$
 $D = 1' 58'' 32.6''$ $L_s = 275.00'$
 $L = 1,871.96'$ $LT = 183.35'$
 $T = 969.90'$ $ST = 91.69'$
 $R = 2,900.00'$
 $SE = .05$
 $RUNOFF = 275'$



MATCH LINE -L- STA. 597 + 00
 SEE SHEET NO. 15

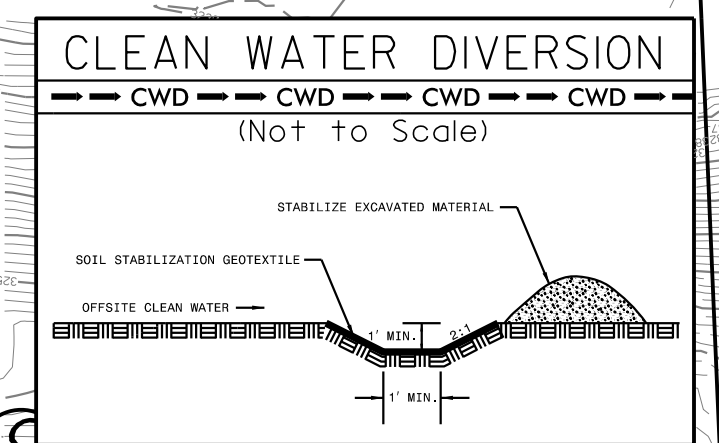
MATCH LINE -L- STA. 608 + 50
 SEE SHEET NO. 17

NOTE:
 PLACE TEMPORARY ROCK SEDIMENT DAMS TYPE - B AND TEMPORARY ROCK SILT CHECKS TYPE - A AT DRAINAGE OUTLETS.

NOTE:
 PERIMETER EROSION CONTROL MEASURES SHALL BE INSTALLED DURING CLEARING AND GRUBBING PHASE.

NOTES: ANY DEVIATION FROM OPTIONS GIVEN WILL REQUIRE PRIOR APPROVAL BY ENGINEER.

ADDITIONAL EROSION CONTROL DEVICES MAY NEED TO BE INSTALLED AS DIRECTED BY THE ENGINEER.



CLEAN WATER DIVERSION TO BE CONSTRUCTED AND RETAINED THROUGH CLEAR AND GRUB AND FINAL GRADE CONSTRUCTION PHASES. DO NOT REMOVE CWD UNTIL TOE PROTECTION HAS BEEN INSTALLED AND STABILIZED.

ROBERT GLENN POE AND DEBRA E. POE
 DB 131 PG 1332

JERRY WAYNE JONES & WIFE
 DONNA H. JONES
 DB 280 PG 1632

IVY S. GOODMAN
 DB 184 PG 1361
 PB 5 PG 263

MARLETTE B. CULLEN (TRUSTEE)
 DB 387 PG 379

ZEE V. GAMBILL & WIFE
 ANGIE TRIBBLE GAMBILL
 DB 304 PG 1918