

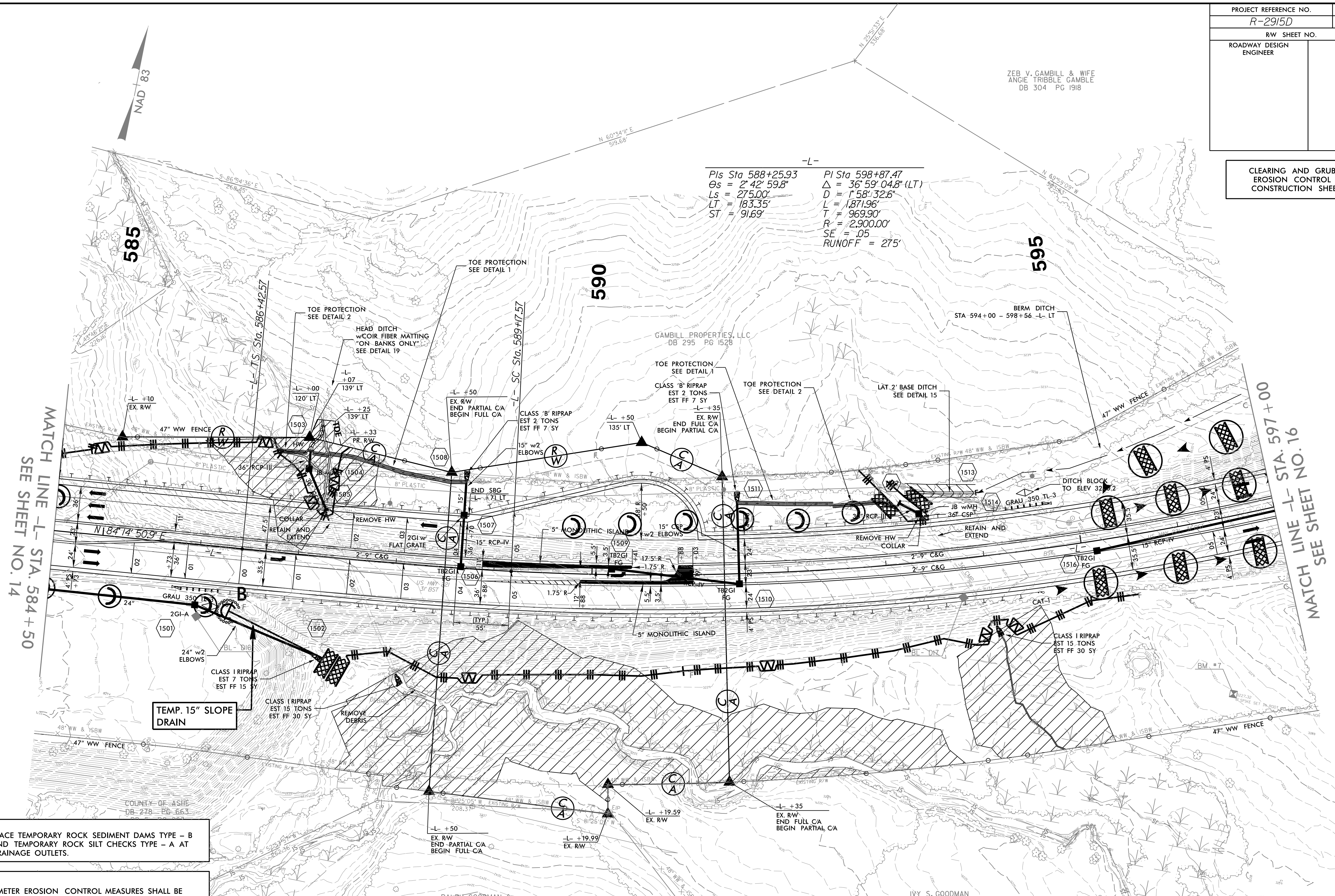
PROJECT REFERENCE NO.	SHEET NO.
R-2915D	EC-15/CONST J5
RW SHEET NO.	
ROADWAY DESIGN ENGINEER	HYDRAULICS ENGINEER

CLEARING AND GRUBBING EROSION CONTROL FOR CONSTRUCTION SHEET 15

ZEB V. GAMBILL & WIFE
ANGIE TRIBBLE GAMBILE
DB 304 PG 1918

PIs Sta 588+25.93
 $\theta_s = 2' 42' 59.8''$
 $L_s = 275.00'$
 $LT = 183.35'$
 $ST = 91.69'$

PI Sta 598+87.47
 $\Delta = 36' 59' 04.8'' (LT)$
 $D = 1' 58' 32.6''$
 $L = 1,871.96'$
 $T = 969.90'$
 $R = 2,900.00'$
 $SE = .05$
 $RUNOFF = 275'$



NOTE:
PLACE TEMPORARY ROCK SEDIMENT DAMS TYPE - B AND TEMPORARY ROCK SILT CHECKS TYPE - A AT DRAINAGE OUTLETS.

NOTE:
PERIMETER EROSION CONTROL MEASURES SHALL BE INSTALLED DURING CLEARING AND GRUBBING PHASE.

NOTES: ANY DEVIATION FROM OPTIONS GIVEN WILL REQUIRE PRIOR APPROVAL BY ENGINEER.

ADDITIONAL EROSION CONTROL DEVICES MAY NEED TO BE INSTALLED AS DIRECTED BY THE ENGINEER.

 ENVIRONMENTALLY SENSITIVE AREA
SEE PROJECT SPECIAL PROVISIONS

INSTALL PIPE(S) IN JURISDICTIONAL AREAS WITHOUT IMPACTING STREAM UNTIL AREA STABILIZED AND ACCORDING TO NCDOT BEST MANAGEMENT PRACTICES FOR CONSTRUCTION AND MAINTENANCE ACTIVITIES MANUAL.