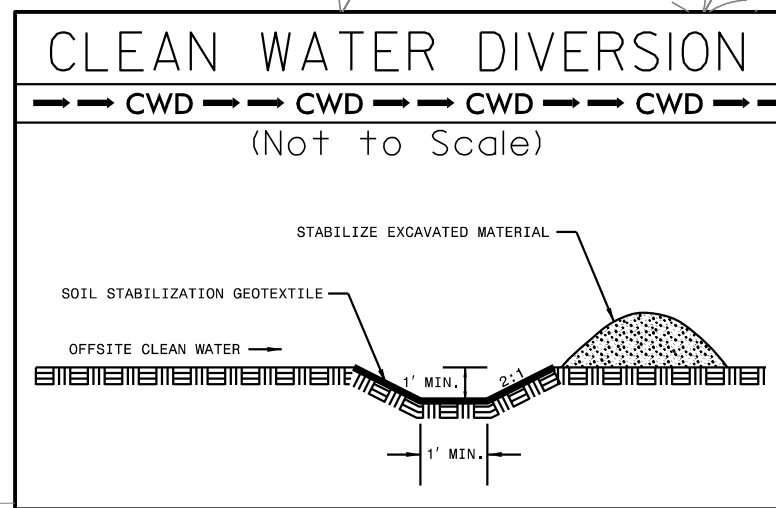
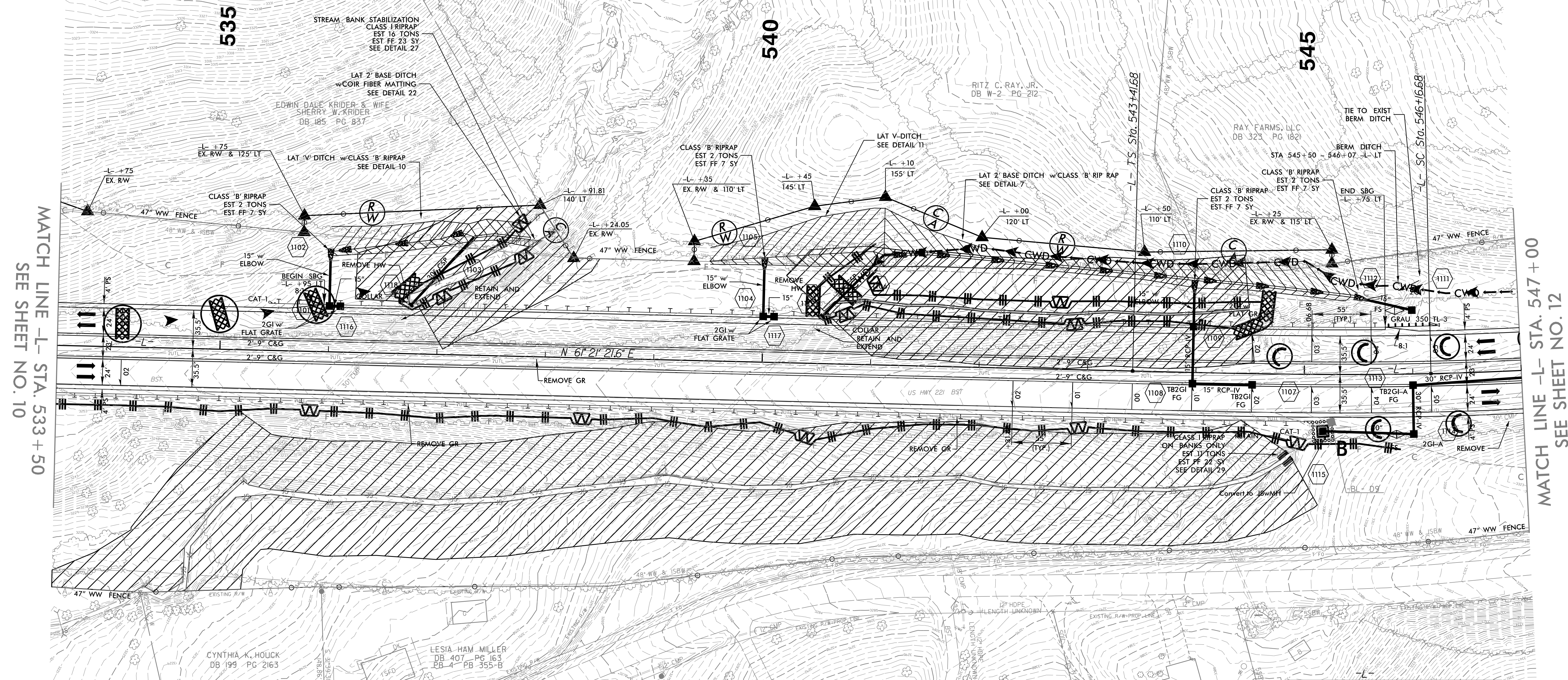


PROJECT REFERENCE NO. R-2915D	SHEET NO. EC-II/CONST.II
RW SHEET NO.	
ROADWAY DESIGN ENGINEER	HYDRAULICS ENGINEER



CLEARING AND GRUBBING
EROSION CONTROL FOR
CONSTRUCTION SHEET 11



MATCH LINE -L- STA. 533 + 50
SEE SHEET NO. 10

MATCH LINE -L- STA. 547 + 00
SEE SHEET NO. 12

NOTE:
PLACE TEMPORARY ROCK SEDIMENT DAMS TYPE - B AND TEMPORARY ROCK SILT CHECKS TYPE - A AT DRAINAGE OUTLETS.

NOTE:
PERIMETER EROSION CONTROL MEASURES SHALL BE INSTALLED DURING CLEARING AND GRUBBING PHASE.

NOTES: ANY DEVIATION FROM OPTIONS GIVEN WILL REQUIRE PRIOR APPROVAL BY ENGINEER.

ADDITIONAL EROSION CONTROL DEVICES MAY NEED TO BE INSTALLED AS DIRECTED BY THE ENGINEER.



INSTALL PIPE(S) IN JURISDICTIONAL AREAS WITHOUT IMPACTING STREAM UNTIL AREA STABILIZED AND ACCORDING TO NCDOT BEST MANAGEMENT PRACTICES FOR CONSTRUCTION AND MAINTENANCE ACTIVITIES MANUAL.

-L-
 $Pis\ Sta\ 545+25.04$ $Pi\ Sta\ 551+05.10$
 $\Delta s = 2' 37' 33.8"$ $\Delta s = 18' 29' 38.2" (LT)$
 $Ls = 275.00'$ $L = 1' 54' 35.5"$
 $LT = 183.35'$ $L = 968.34'$
 $ST = 91.69'$ $T = 488.42'$
 $R = 3,000.00'$
 $SE = .05$
 $RUNOFF = 275'$