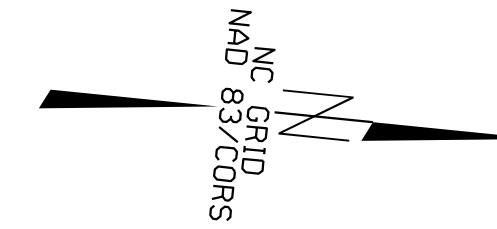
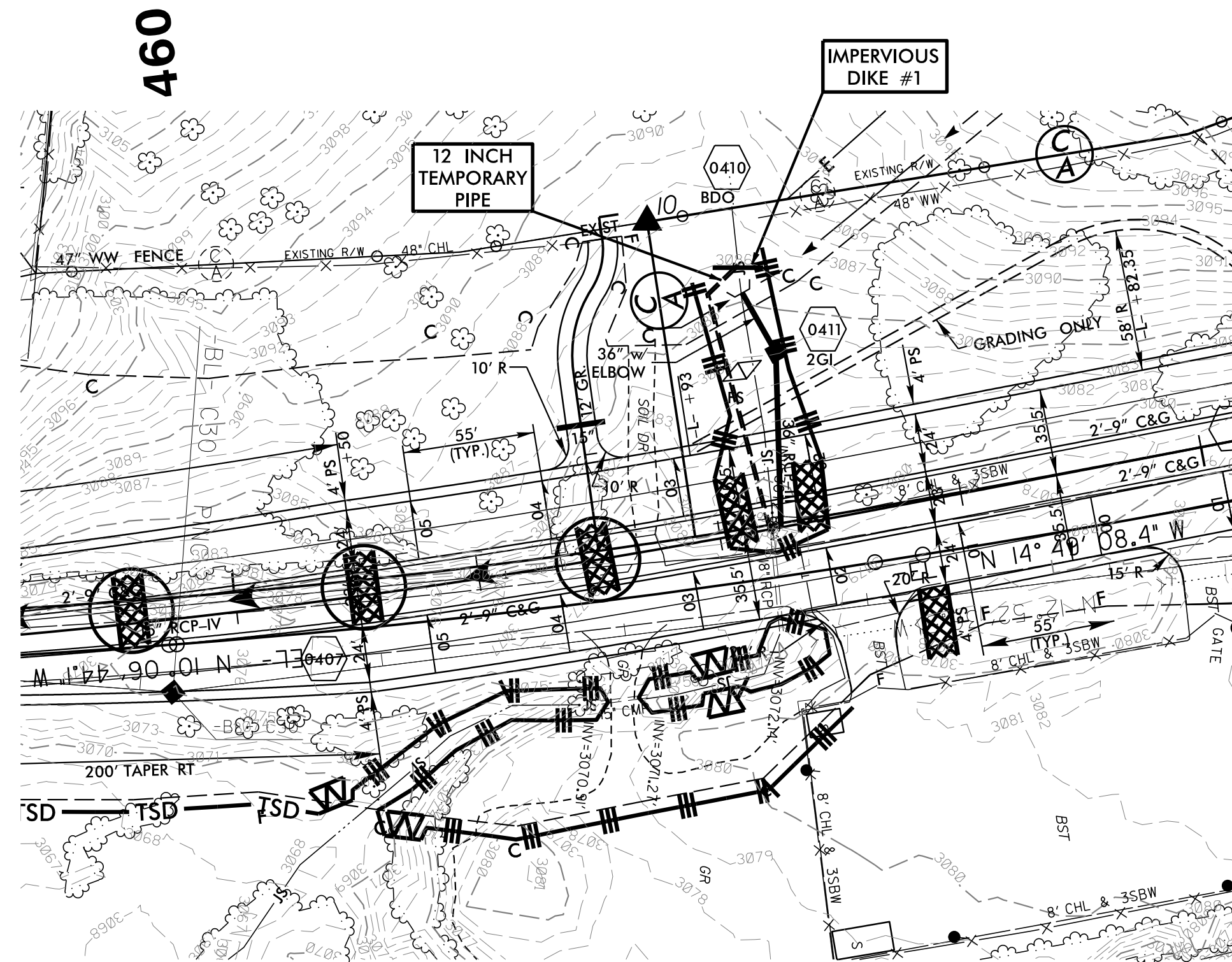


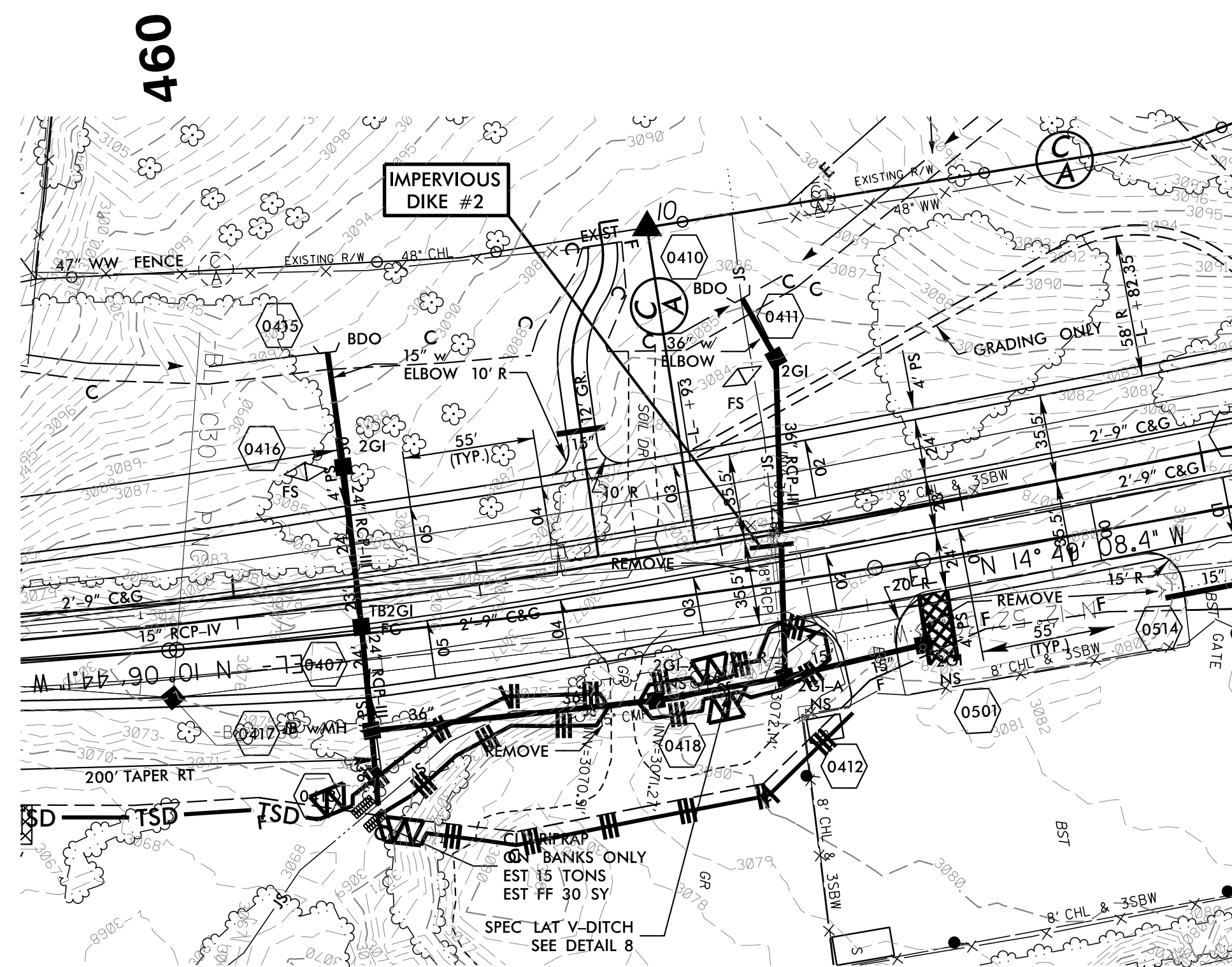
PROJECT REFERENCE NO.	SHEET NO.
R-2915D	EC-04A/CONST.04
RW SHEET NO.	
ROADWAY DESIGN ENGINEER	HYDRAULICS ENGINEER



R-2915D
ASHE COUNTY
CONSTRUCTION SEQUENCE FOR 36" RCP-III
STA. 462+25 -L-
UT TO OLD FIELD CREEK

PHASE 1

1. INSTALL IMPERVIOUS DIKE #1 AND 12" TEMPORARY PIPE.
2. CONSTRUCT DRAINAGE STRUCTURES AND PIPE FROM 0410 TO 0411 AND +/- 60 FT OF 36" RCP-III FROM 0411 TO INVERT OF EXTG. 18" RCP.
3. REMOVE IMPERVIOUS DIKE #1 AND TEMPORARY PIPE.
4. CONSTRUCT SOUTH BOUND LANES, UTILIZING TEMPORARY SHORING WHERE NEEDED, AND SHIFT TRAFFIC.



PHASE 2

1. INSTALL IMPERVIOUS DIKE #2, UTILIZING A PUMP AROUND WHEN NEEDED.
2. REMOVE EXTG. 18" RCP AND CONSTRUCT REMAINING DRIANGE SYSTEM FROM THE OUTLET UP TO IMPERVIOUS DIKE #2.
3. REMOVE IMPERVIOUS DIKE #2 AND COMPLETE CONSTRUCTION OF DRAINAGE SYSTEM.