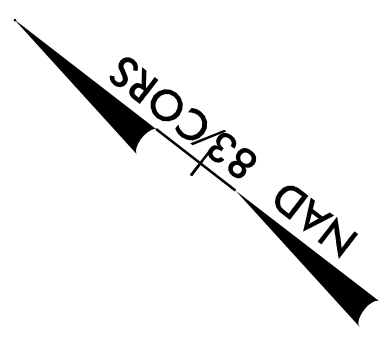


PROJECT REFERENCE NO. <b>R-2915D</b>	SHEET NO. <b>23</b>
RW SHEET NO.	
ROADWAY DESIGN ENGINEER <b>Barry C. Smith</b>	HYDRAULICS ENGINEER <b>W. Henry Wells Jr.</b>
KCI Engineers • Planners • Scientists • Construction Managers 4601 Six Forks Road, Landmark Center II, Suite 220 Raleigh, NC 27609-5210 TEL: (919) 850-2243 FAX: (919) 850-4298 Phone: (919) 783-9214 • Fax: (919) 783-9266	
<b>SUNGATE DESIGN GROUP, P.A.</b> 915 JONES FRANKLIN ROAD RALEIGH, NORTH CAROLINA 27606 TEL: (919) 850-2243 FAX: (919) 850-4298 ENG FROM LICENSE NO. C-890	

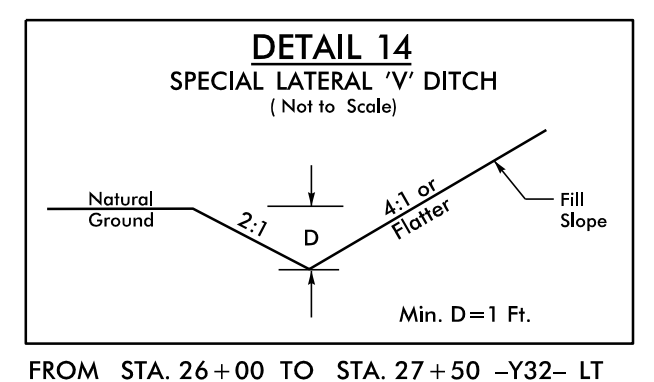
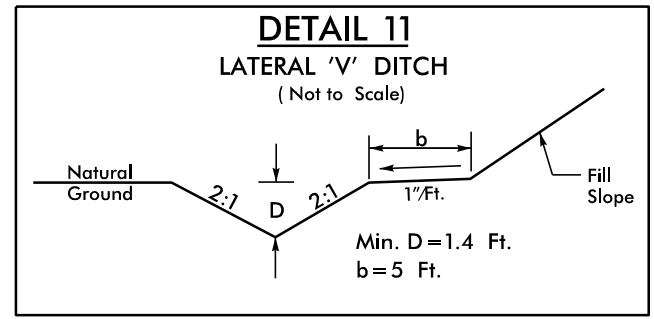
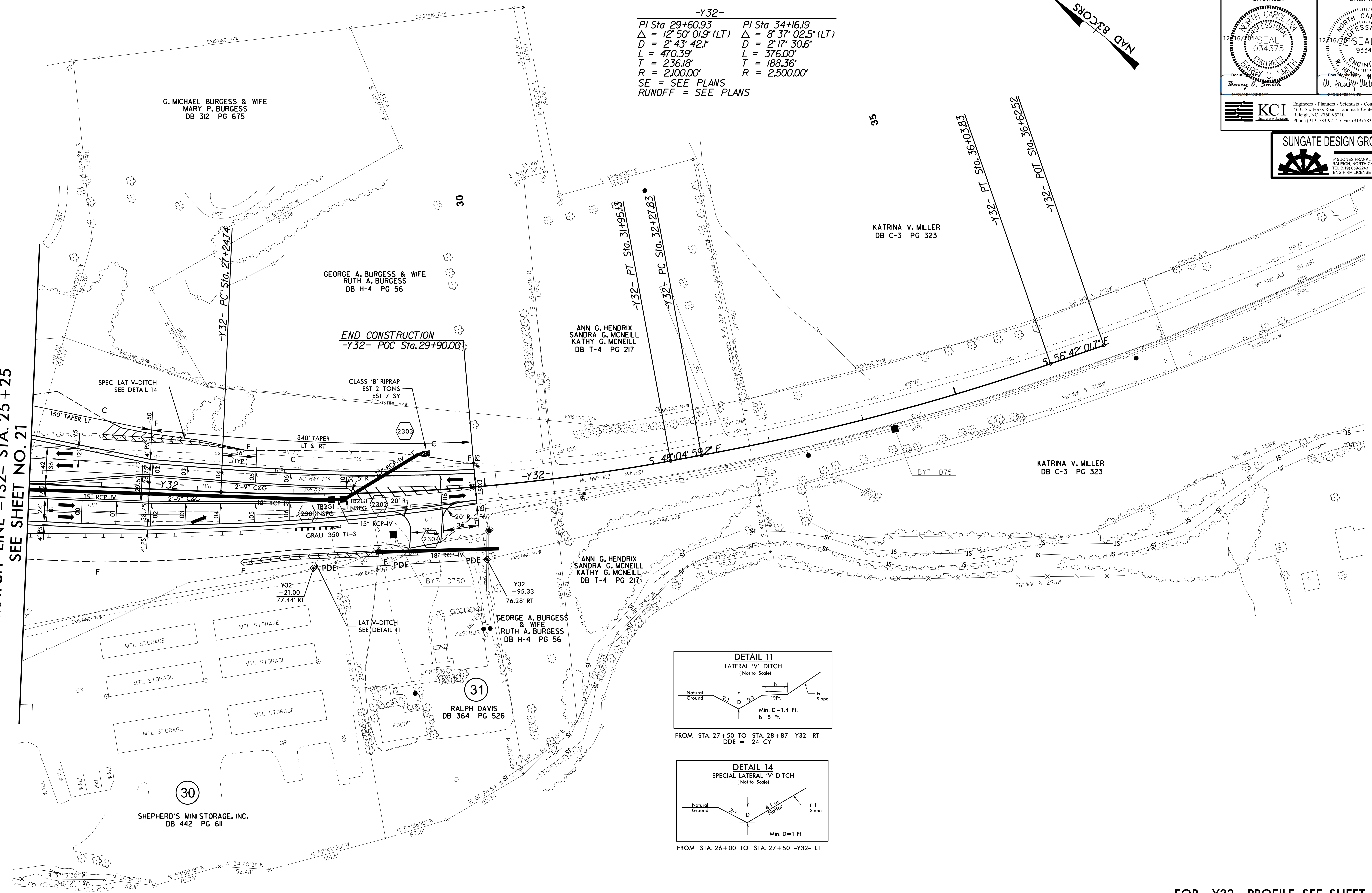
-Y32-

PI Sta 29+60.93 Δ = 12° 50' 01.9" (LT) D = 2' 43' 42.1" L = 470.39' T = 236.18' R = 2100.00'	PI Sta 34+16.19 Δ = 8° 37' 02.5" (LT) D = 2' 17' 30.6" L = 376.00' T = 188.36' R = 2500.00'
---	--

SE = SEE PLANS  
RUNOFF = SEE PLANS



MATCH LINE -Y32- STA. 25 + 25  
SEE SHEET NO. 21



FOR -Y32- PROFILE, SEE SHEET 35

NOTE: ALL EXISTING CONTROL OF ACCESS FENCE TO BE REMOVED UNLESS OTHERWISE NOTED.

8/17/99  
26-NOV-2014 10:33  
R:\2915D\Roadway\Proj\R2915D\_Rdw\_psh\_23.dgn  
\$\$\$\$\$USERNAME\$\$\$\$\$