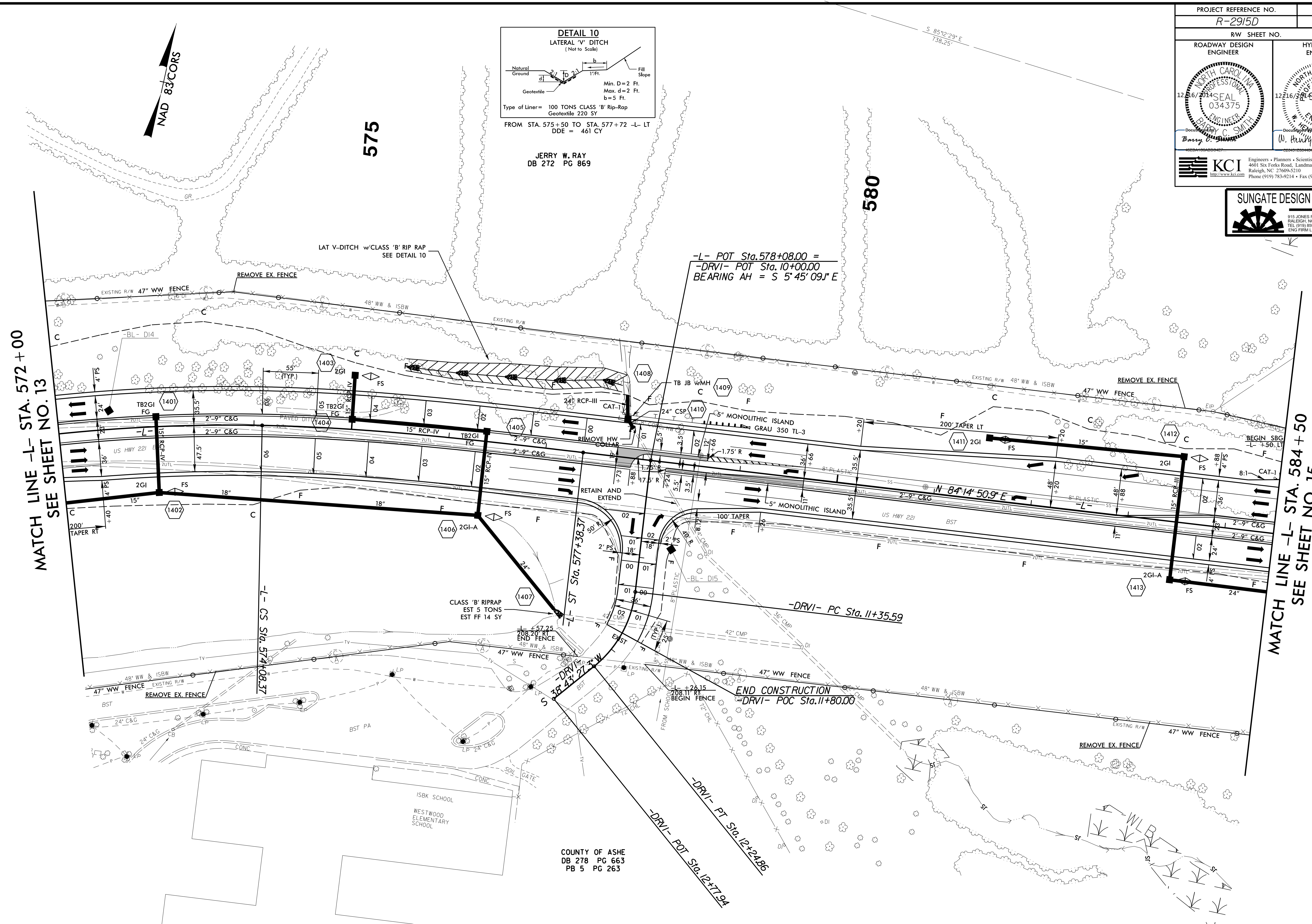


JERRY W. RAY  
DB 272 PG 869

MATCH LINE -L- STA. 572+00  
SEE SHEET NO. 13

MATCH LINE -L- STA. 584+50  
SEE SHEET NO. 15



COUNTY OF ASHE  
DB 278 PG 663  
PB 5 PG 263

-L-		-DRVI-
PI Sta 568+99.04	PIs Sta 575+18.47	PI Sta 11+82.61
$\Delta = 35^{\circ} 30' 55.4''$ (RT)	$\Theta_s = 5^{\circ} 33' 39.8''$	$\Delta = 44^{\circ} 28' 36.3''$ (RT)
$D = 3^{\circ} 22' 13.2''$	$L_s = 330.00'$	$D = 49^{\circ} 49' 20.7''$
$L = 1,053.76'$	$LT = 220.11'$	$T = 89.27'$
$T = 544.43'$	$ST = 110.00'$	$T = 47.02'$
$R = 1,700.00'$		$R = 115.00'$
$SE = .06$		$SE = \text{SEE PLANS}$
$RUNOFF = 330'$		$RUNOFF = \text{SEE PLANS}$

FOR -L- PROFILE, SEE SHEET 29  
FOR -DRVI- PROFILE, SEE SHEET 34  
NOTE: ALL EXISTING CONTROL OF ACCESS FENCE TO BE REMOVED UNLESS OTHERWISE NOTED.

24-NOV-2014 08:32  
 P:\2014\2915D\Roadway\Proj\2915D\_Roadway\Proj\2915D\_Rdy\_psh\_14.dgn  
 \$\$\$\$\$\$  
 8/17/99