

PROJECT REFERENCE NO. R-2915D	SHEET NO. 5
RW SHEET NO.	
ROADWAY DESIGN ENGINEER	HYDRAULICS ENGINEER
Engineers • Planners • Scientists • Construction Managers 4601 Six Forks Road, Landmark Center II, Suite 220 Raleigh, NC 27609-5210 TEL (919) 896-2345 FAX (919) 896-2329 Phone (919) 783-9214 • Fax (919) 783-9266	
915 JONES FRANKLIN ROAD RALEIGH, NORTH CAROLINA 27608 TEL (919) 896-2345 FAX (919) 896-2329 ENG FIRM LICENSE NO. C-890	

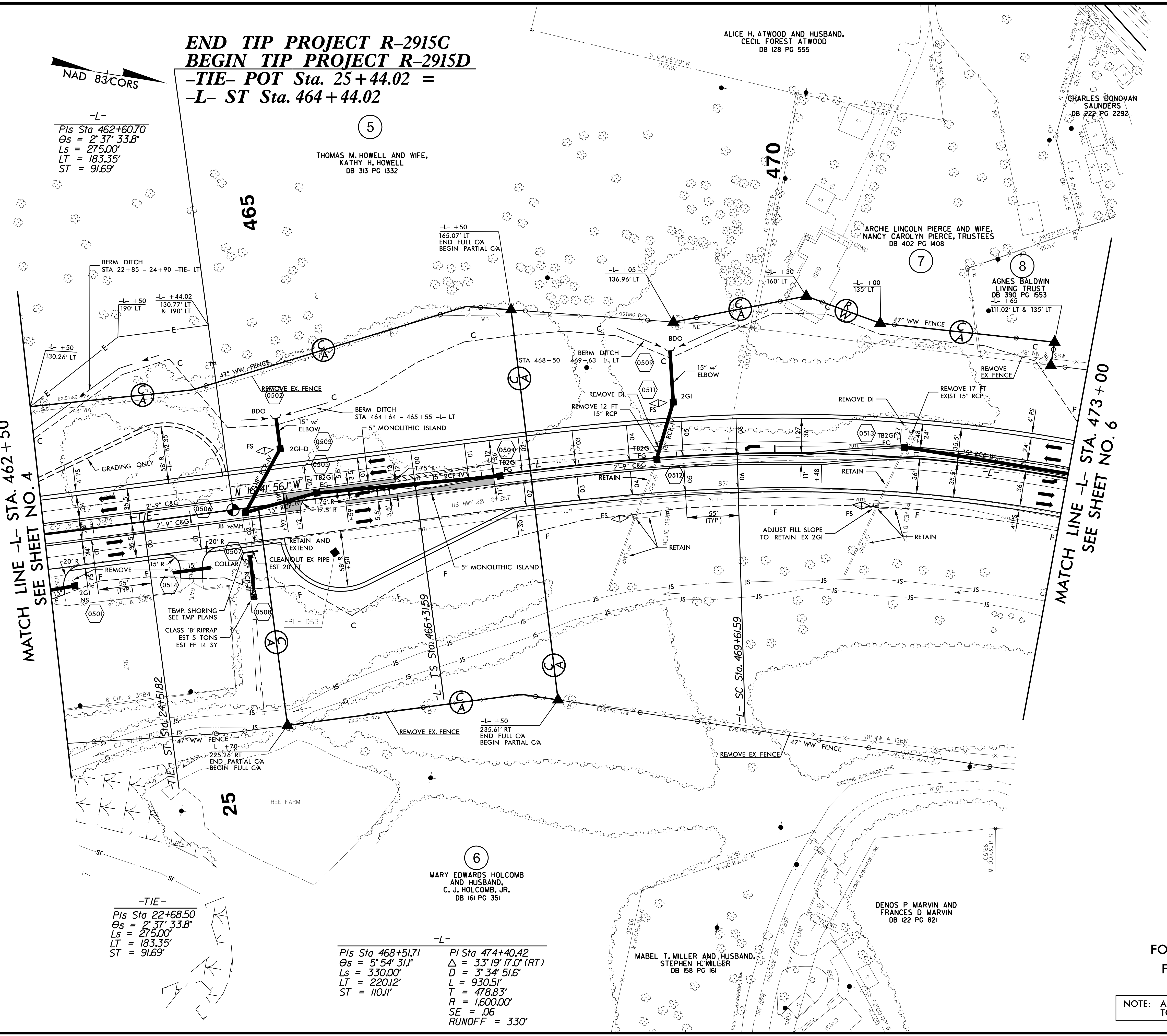
END TIP PROJECT R-2915C
BEGIN TIP PROJECT R-2915D
-TIE- POT Sta. 25+44.02 =
-L- ST Sta. 464+44.02

-L-
 Pls Sta 462+60.70
 Os = 2' 37" 33.8"
 Ls = 275.00'
 LT = 183.35'
 ST = 91.69'

MATCH LINE -L- STA. 462+50
 SEE SHEET NO. 4

MATCH LINE -L- STA. 473+00
 SEE SHEET NO. 6

8/17/99
 24-NOV-2014 08:32
 F:\1-2011\110157-2915D\Roadway\Pro\1R2915D_Rdu_psh_5.dgn
 \$\$\$\$\$\$USERNAME\$\$\$\$\$\$



5
 THOMAS M. HOWELL AND WIFE,
 KATHY H. HOWELL
 DB 313 PG 1332

ALICE H. ATWOOD AND HUSBAND,
 CECIL FOREST ATWOOD
 DB 128 PG 555

7
 ARCHIE LINCOLN PIERCE AND WIFE,
 NANCY CAROLYN PIERCE, TRUSTEES
 DB 402 PG 1408

8
 AGNES BALDWIN
 LIVING TRUST
 DB 390 PG 1553
 -L- +65
 111.02' LT & 135' LT

6
 MARY EDWARDS HOLCOMB
 AND HUSBAND,
 C. J. HOLCOMB, JR.
 DB 161 PG 351

DENOS P. MARVIN AND
 FRANCES D. MARVIN
 DB 122 PG 821

MABEL T. MILLER AND HUSBAND,
 STEPHEN H. MILLER
 DB 158 PG 161

-TIE-
 Pls Sta 22+68.50
 Os = 2' 37" 33.8"
 Ls = 275.00'
 LT = 183.35'
 ST = 91.69'

-L-
 Pls Sta 468+51.71
 Os = 5' 54" 31.1"
 Ls = 330.00'
 LT = 220.12'
 ST = 110.11'

Pls Sta 474+40.42
 Δ = 33' 19" 17.0" (RT)
 D = 3' 34" 51.6"
 L = 930.51'
 T = 478.83'
 R = 1,600.00'
 SE = .06
 RUNOFF = 330'

FOR -TIE- PROFILE, SEE SHEET 24
 FOR -L- PROFILE, SEE SHEET 24

NOTE: ALL EXISTING CONTROL OF ACCESS FENCE
 TO BE REMOVED UNLESS OTHERWISE NOTED.