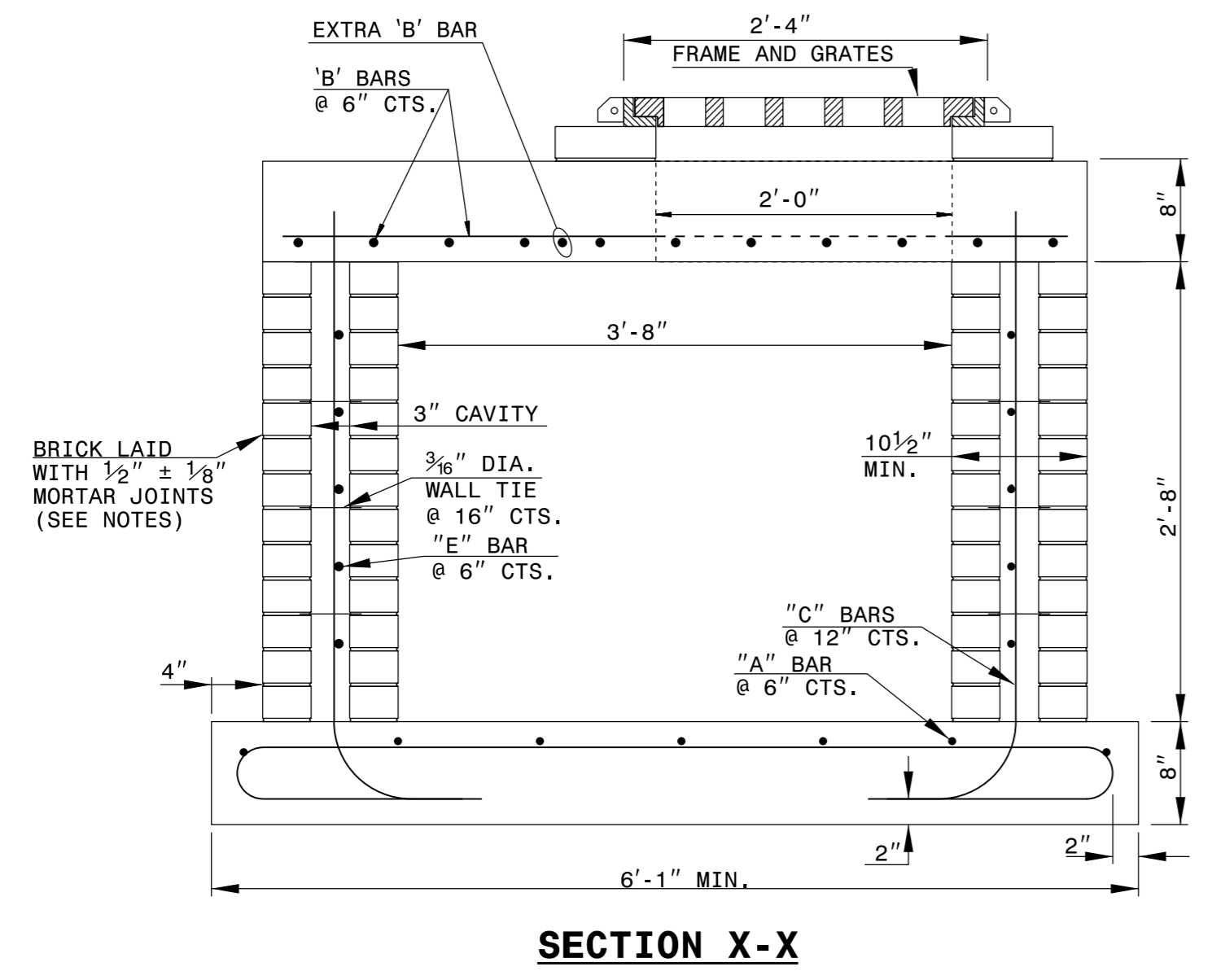
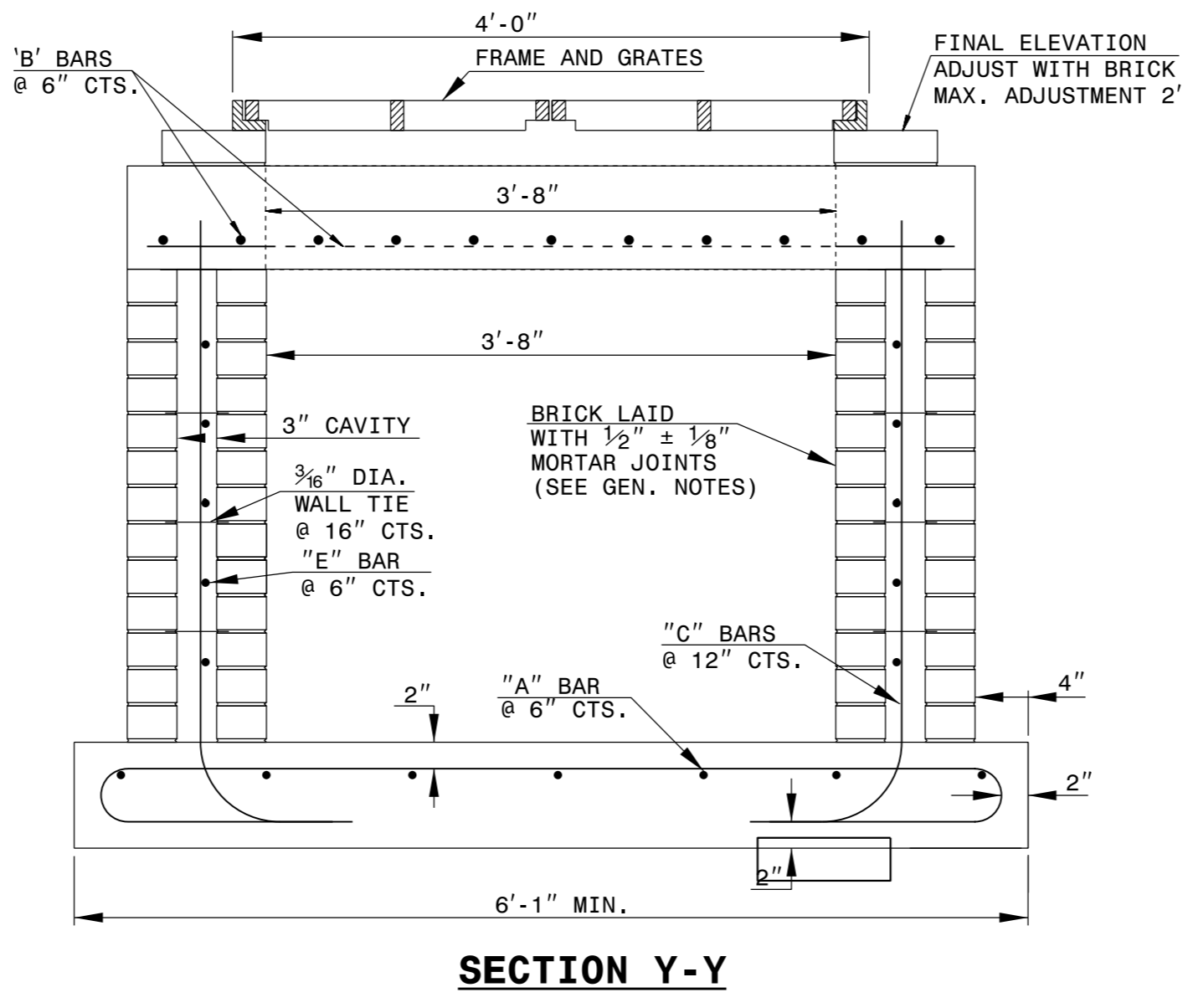


5/14/99

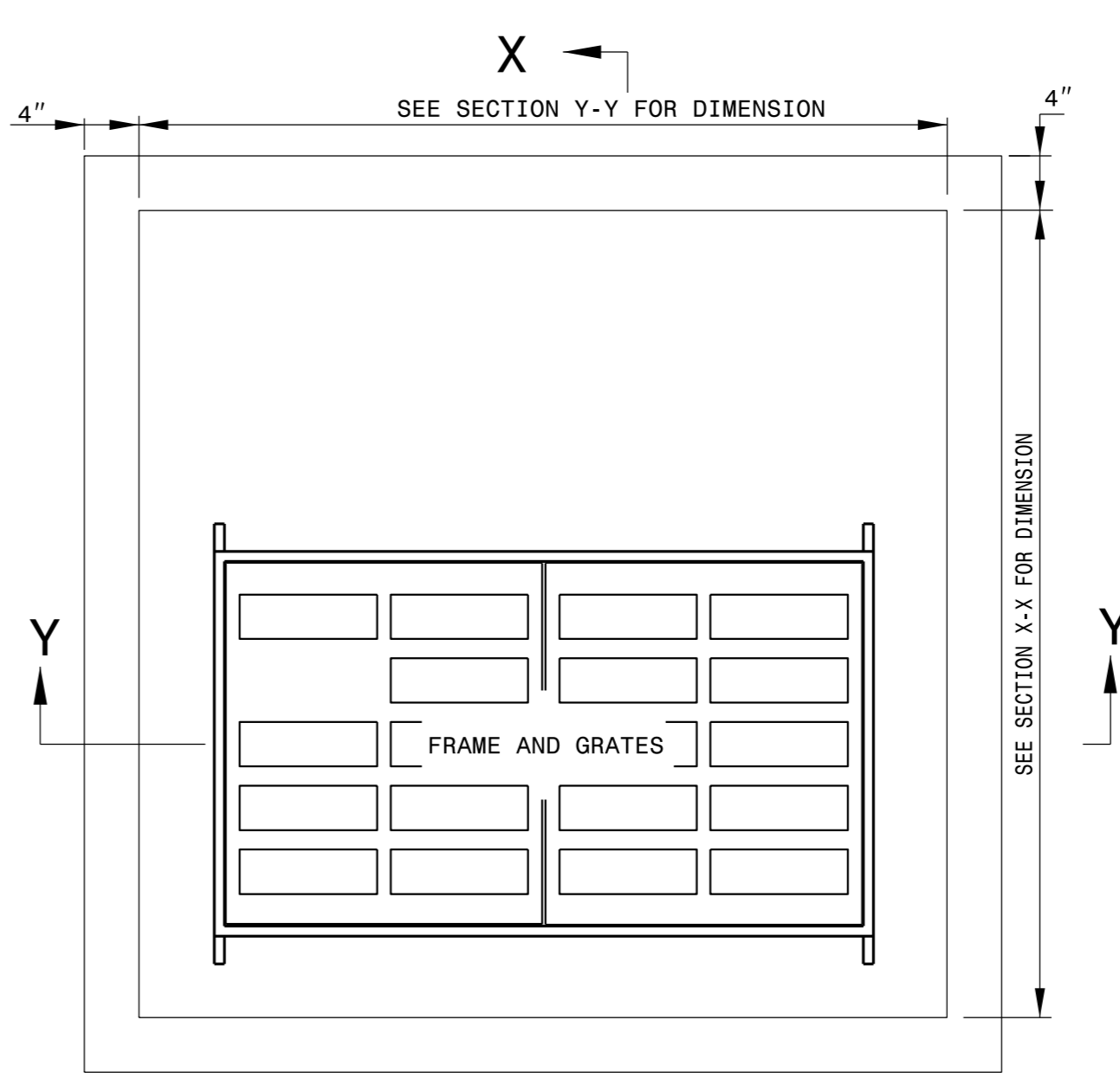


SECTION X-X

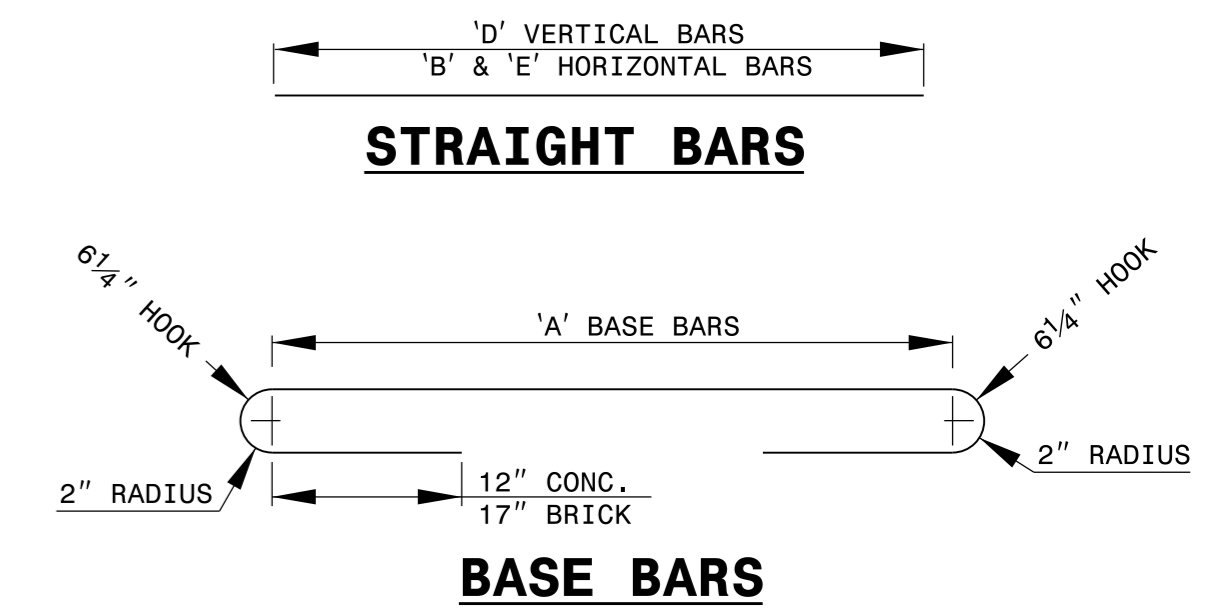
BRICK ALT.



SECTION Y-Y

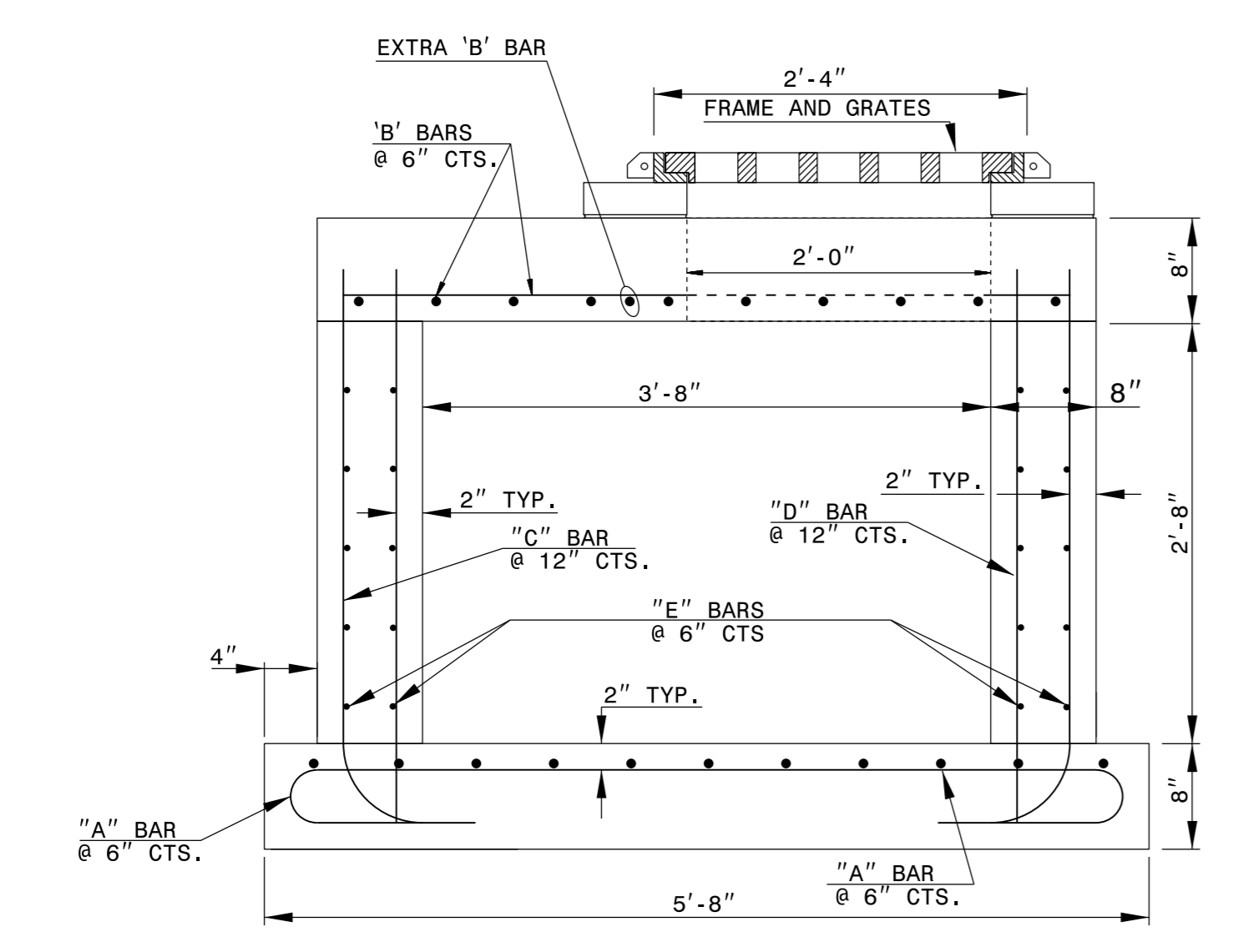


PLAN



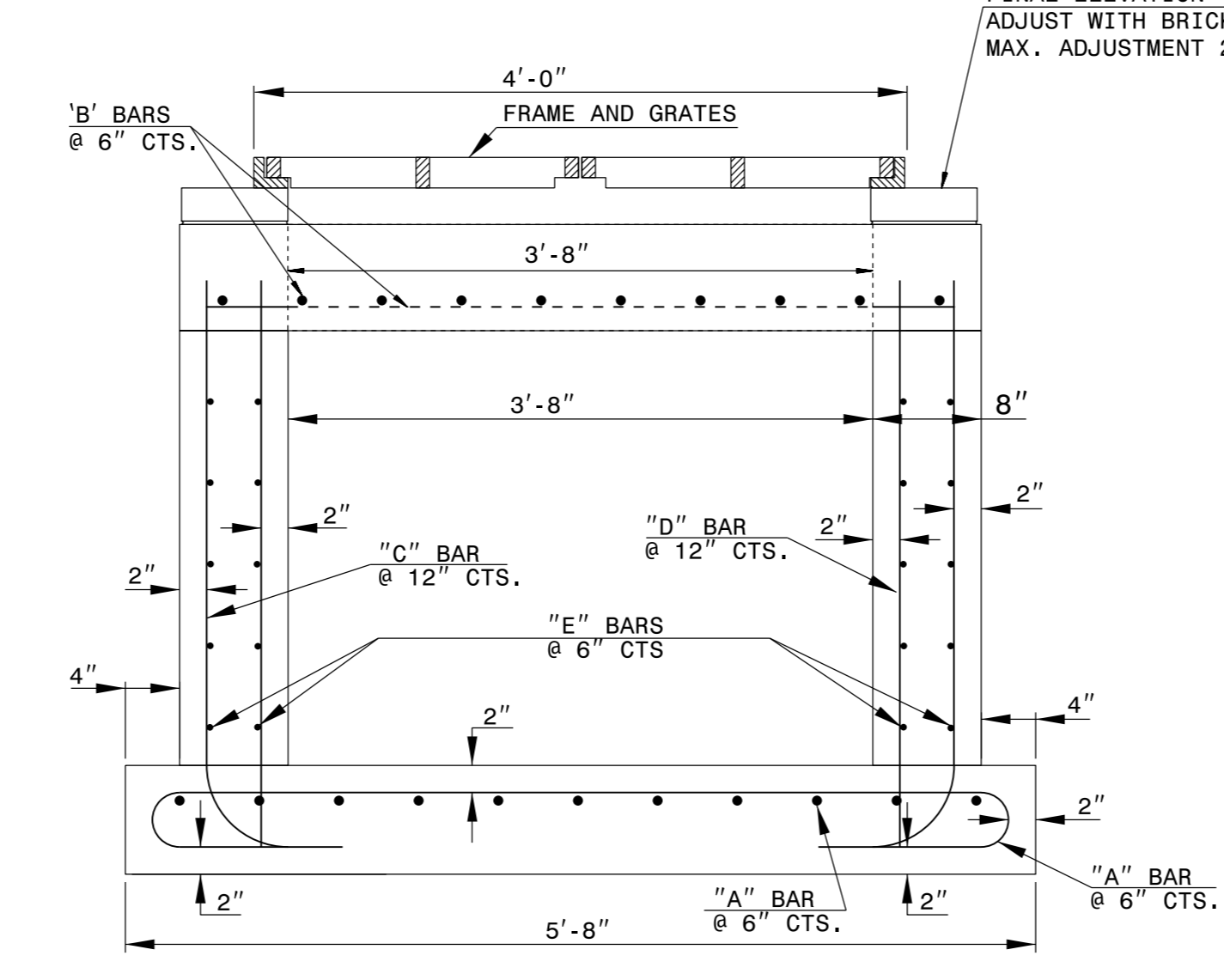
STRAIGHT BARS

BASE BARS

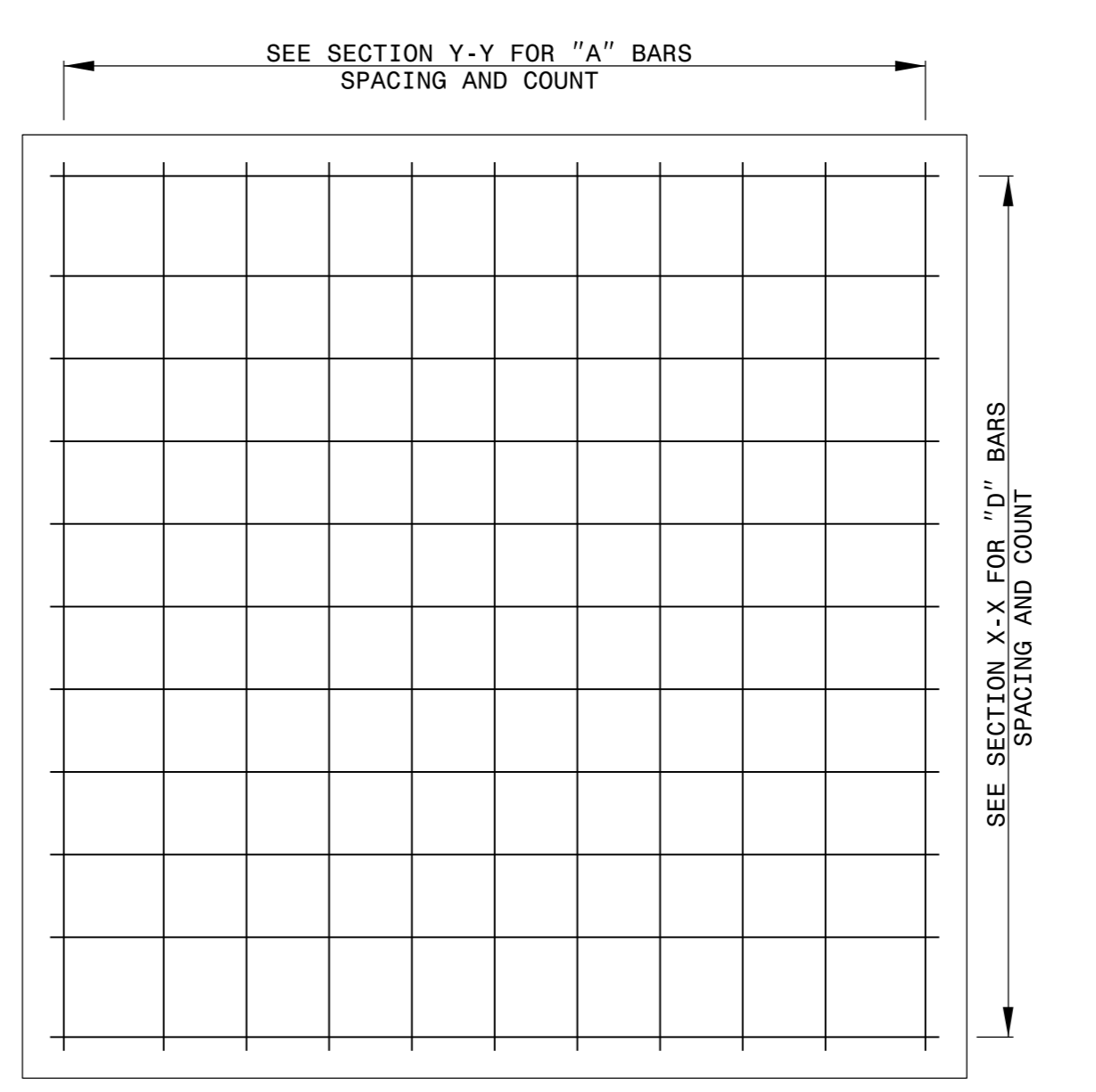


SECTION X-X

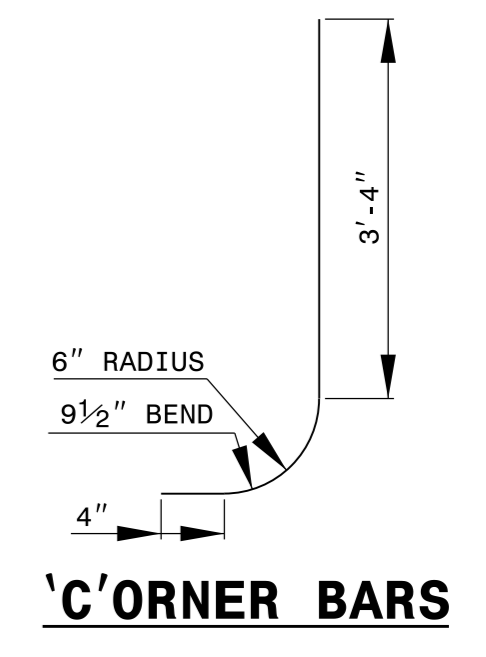
CONCRETE ALT.



SECTION Y-Y



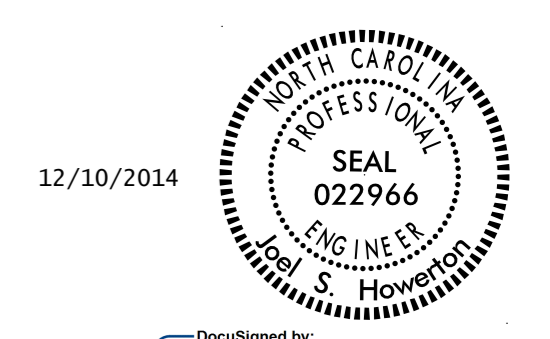
PLAN OF BASE



'C' ORNER BARS

BILL OF MATERIALS							
COMMON		CONCRETE ALT.		BRICK ALT.			
BAR	SIZE	LENGTH	QUANTITY	WEIGHT	LENGTH	QUANTITY	WEIGHT
A	#7	8'-1"	20	330.4	9'-4"	22	419.7
B	#7	4'-8"	20	190.8	5'-1"	23	239.0
C	#5	4'-2"	20	87.0	4'-2"	22	95.6
D	#5	3'-6"	20	73.0	3'-6"	22	80.3
E	#5	4'-8"	40	194.7	4'-6"	20	93.9
REINF. STEEL (TOTAL WEIGHT LBS.)				875.9	928.5		
CONCRETE (yd³)				2.4	1.4		
BRICK IN WALLS (yd³)				0.0	1.6		
BRICK + CONCRETE (yd³)				2.4	3.0		
24" RCP DEDUCTION @ 90° SKEW (yd³)				0.1	0.1		

GENERAL NOTES:
 -CHAMFER ALL EXPOSED CONCRETE CORNERS 1".
 -USE FORMS TO CONSTRUCT THE BOTTOM SLAB.
 -IF PIPES ARE SET IN THE BASE FOLLOW CONSTRUCTION PROCEDURES SHOWN BY STD. DWG. 840.00.
 -REINFORCING STEEL COST IS INCLUSIVE IN THE UNIT BID PRICE FOR "MASONRY DRAINAGE STRUCTURE".
 -REFERENCE STD. DWG. 840.25 FOR FRAME ANCHORAGE.
 -CONCRETE BRICK, JUMBO BRICK AND 4" SOLID CONCRETE BLOCK WILL BE PERMITTED
 -PROVIDE DROP INLETS OVER 3'-6" DEEP WITH STEPS AS DIRECTED BY STD. DWG. 840.66.
 -FRAME AND GRATES ARE SEPARATE CONTRACT ITEM.
 -ADJUSTMENTS MAY BE MADE AS FIELD CONDITIONS DICTATE OR AS DIRECTED BY THE ENGINEER.
 -ANCHOR FRAMES IN ACCORDANCE WITH STD. DWG. 840.25.
 -THE HEIGHT OF THIS STRUCTURE MAY BE ADJUSTED UP TO 14".



12/10/2014

CONTRACT STANDARDS AND DEVELOPMENT UNIT
 Office 919-707-6950 FAX 919-250-4119

DETAIL OF TRAFFIC BEARING DROP INLET UP TO 36" RCPs

ORIGINAL BY: Std. Dwg. 840.35 DATE: July 1995
 MODIFIED BY: L. Robinson DATE: Aug. 1996
 CHECKED BY: DATE:
 FILE SPEC.: :tspell/terry_ds8/tbdi for up to 36 in pipe.dgn

TIME\$\$\$\$
 CTIME\$\$\$\$
 YTIME\$\$\$\$
 XTIME\$\$\$\$
 ZTIME\$\$\$\$
 USER\$\$\$\$
 NAME\$\$\$\$