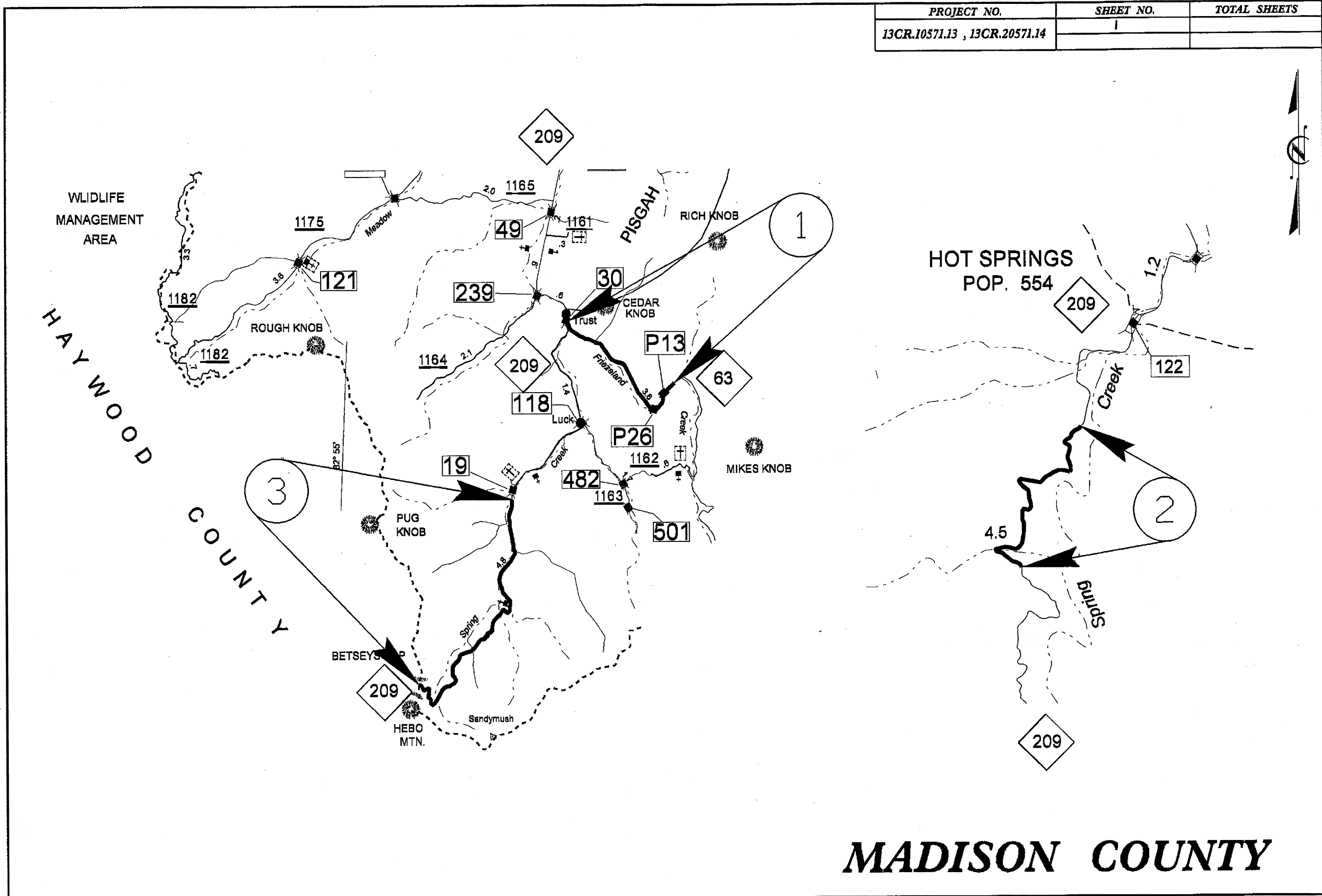
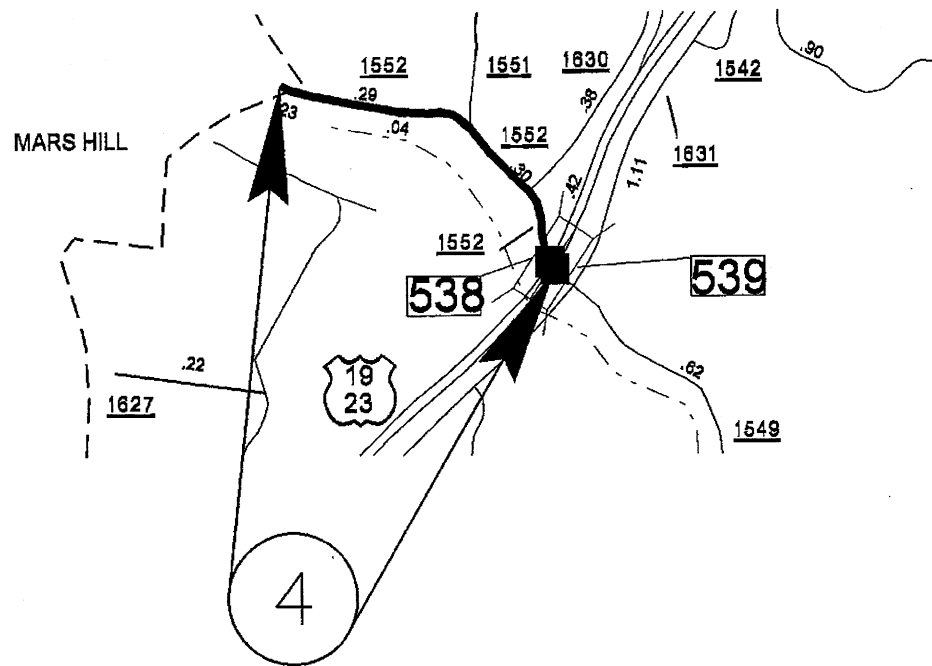


PROJECT NO.	SHEET NO.	TOTAL SHEETS
13CR.10571.13 , 13CR.20571.14	1	



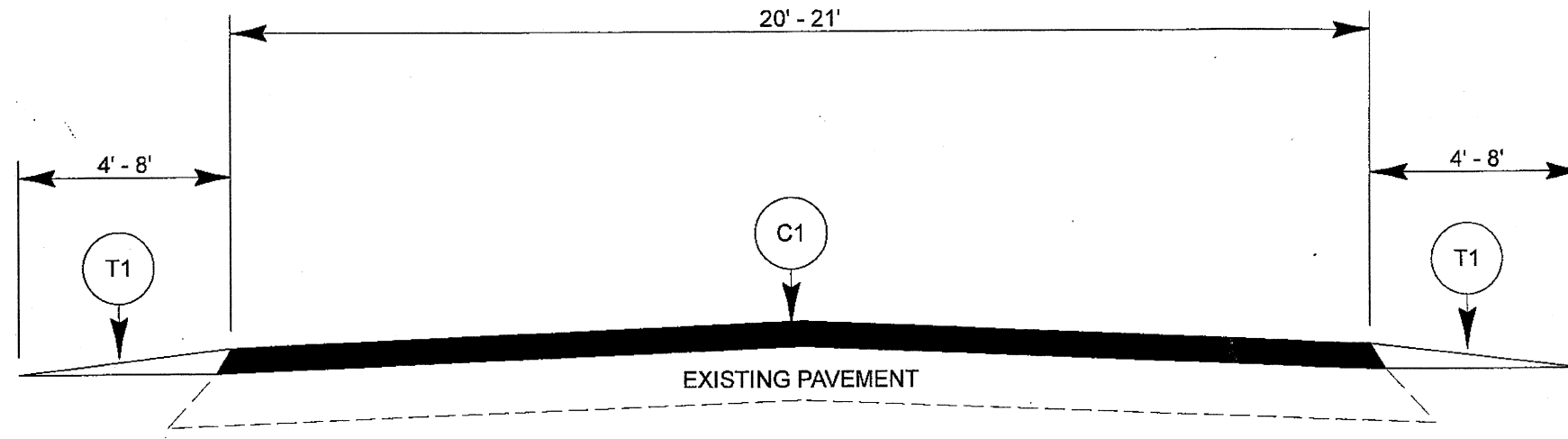
MADISON COUNTY

PROJECT NO.	SHEET NO.	TOTAL SHEETS
13CR.10571.13 , 13CR.20571.14	2	

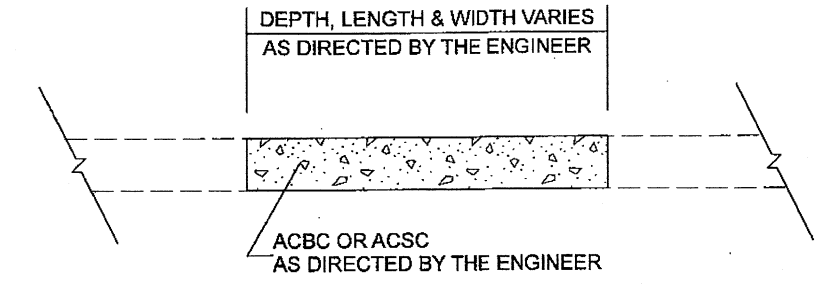


MADISON COUNTY

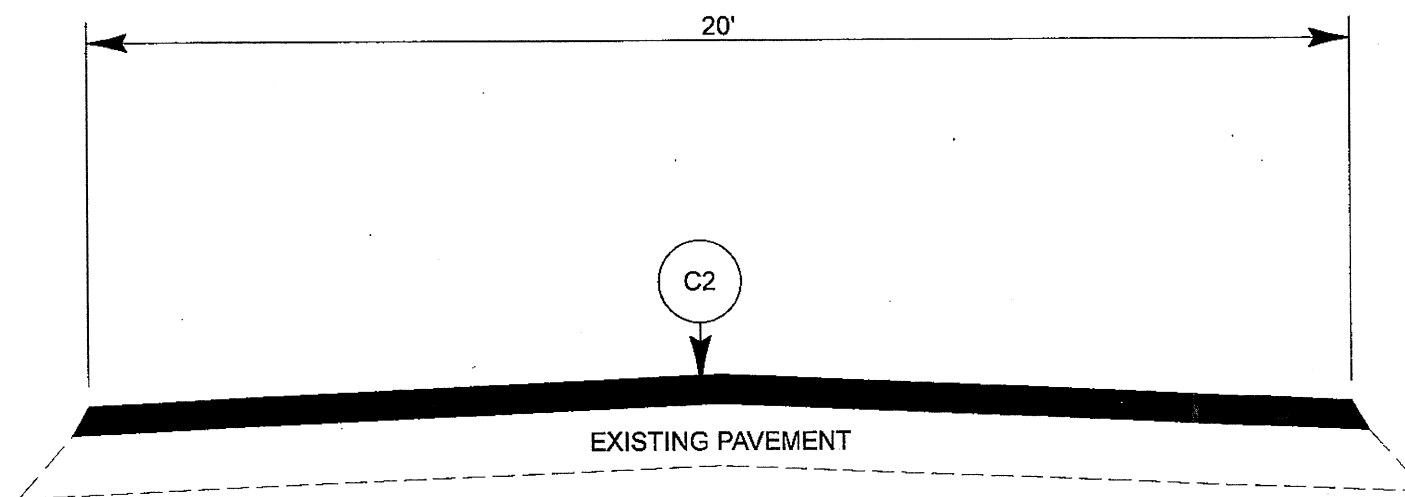
PROJECT NO. 13CR.10571.13, 13CR.20571.14	SHEET NO. 3	TOTAL SHEETS
--	----------------	--------------



TYPICAL SECTION NO. 1



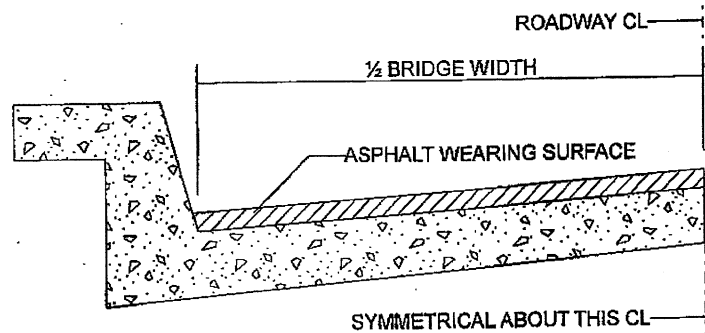
PATCHING EXISTING PAVEMENT



TYPICAL SECTION NO. 2

PAVEMENT SCHEDULE	
C1	PROP. APPROX. 1-1/2" ACSC, TYPE S9.5B, AT AN AVERAGE RATE OF 168 LBS. PER SQ. YD.
C2	PROP. APPROX. 1-1/2" ACSC, TYPE SF9.5A, AT AN AVERAGE RATE OF 165 LBS. PER SQ. YD.
T1	SHOULDER RECONSTRUCTION
V3	INCIDENTAL MILLING

PROJECT NO.	SHEET NO.	TOTAL SHEETS
13CR.10571.13, 13CR.20571.14	4	



BRIDGE HALF TYPICAL SECTION

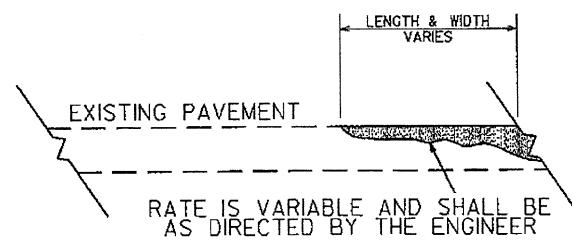
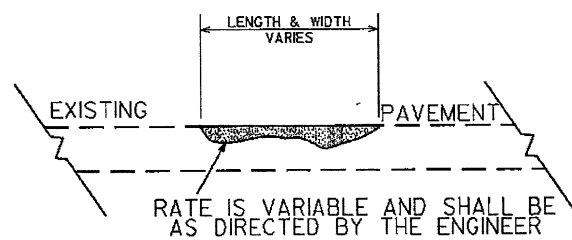
FOR BRIDGES WITH FLOOR DRAINS, CARE SHALL BE EXERCISED IN PLACING THE WEARING SURFACE AROUND FLOOR DRAINS SO AS NOT TO HINDER EFFECTIVE DRAINAGE. ALL DRAINS SHALL BE LEFT OPEN

THE PROPOSED WEARING SURFACE SHALL VARY IN THICKNESS AS NECESSARY TO PROVIDE A SMOOTH RIDING SURFACE. THE MINIMUM THICKNESS SHOULD DEPEND ON PAVEMENT TYPE AS FOLLOWS: S4.75A 1/2", SF9.5A 1.0", S9.5X 1.5", S12.5X 2.0", ULTRATHIN HOT MIX ASPHALT-TYPE A 3/4", ULTRATHIN HOT MIX ASPHALT-TYPE B 5/8", ULTRATHIN HOT MIX ASPHALT-TYPE C 1/2". THE MAXIMUM THICKNESS SHOULD DEPEND ON PAVEMENT TYPE AS FOLLOWS: S4.75A 1.0", SF9.5A 1.5", S9.5X 2.0", S12.5X 2.0", ULTRATHIN HOT MIX ASPHALT-TYPE A 3/4", ULTRATHIN HOT MIX ASPHALT-TYPE B 5/8", ULTRATHIN HOT MIX ASPHALT-TYPE C 1/2".

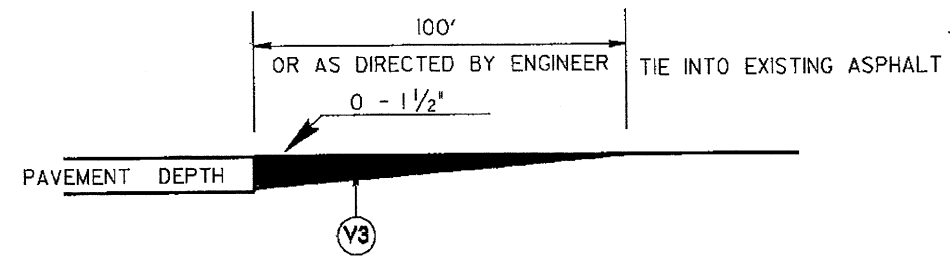
NOTES

ALL UNPAVED ROADS TO BE RESURFACED 50' FROM EDGE OF PAVEMENT OF MAIN PROJECT.
 ALL PAVED S.R. ROADS TO BE RESURFACED TO THE ENDS OF THE RADII, OR AS DIRECTED BY THE ENGINEER.
 EDGES, PAVEMENT WIDENING, INTERSECTIONS AND BRIDGE FLARES ARE INCLUDED IN THE TABLE OF QUANTITIES.
 SHOULDERS AND DITCHES ARE TO BE CONSTRUCTED BY OTHERS UNLESS OTHERWISE INDICATED.
 BRIDGES ARE TO BE RESURFACED AT LOCATIONS AND TO DEPTH AS DIRECTED BY THE ENGINEER.

PAVEMENT SCHEDULE	
C1	PROP. APPROX. 1-1/2" ACSC, TYPE S9.5B, AT AN AVERAGE RATE OF 168 LBS. PER SQ. YD.
C2	PROP. APPROX. 1-1/2" ACSC, TYPE SF9.5A, AT AN AVERAGE RATE OF 165 LBS. PER SQ. YD.
T1	SHOULDER RECONSTRUCTION
V3	INCIDENTAL MILLING



DETAIL SHOWING METHOD OF WEDGING



DETAIL TO TIE INTO EXIST PAVEMENT

THE CONTRACTOR'S ATTENTION IS DIRECTED TO THE FACT THAT HE WILL BE REQUIRED TO MILL THE EXISTING ASPHALT PAVEMENT TO ENSURE A PROPER TIE-IN WITH THE EXISTING SURFACE AT THE BEGINNING, END AND Y LINES OF EACH MAP TO BE RESURFACED WITH ASPHALT CONC SURFACE COURSE, TYPE S9.5B. THIS WILL BE PAID FOR AS INCIDENTAL MILLING.

PROJECT NO.	SHEET NO.	TOTAL NO.
13CR.10571.13, 13CR.20571.14	6	

SUMMARY OF QUANTITIES

PROJECT NO	COUNTY	MAP NO	ROUTE	DESCRIPTION	TYP NO	LANES	LANE TYPE	FINAL SURFACE TESTING REQUIRED	WARM MIX ASPHALT REQUIRED	LENGTH MI	WIDTH FT	INCIDENTAL STONE BASE TON	SHOULDER RECONSTRUCTION SMI	INCIDENTAL MILLING SY	ASPHALT CONC SURFACE COURSE, TYPE S9.5B TON	ASPHALT CONC SURFACE COURSE, TYPE SF9.5A TON	ASPHALT BINDER FOR PLANT MIX TON	PATCHING EXISTING PAVEMENT TON
13CR.10571.13	Madison	1	NC 63	FROM NC 209 TO NEW MIX (MP 11.848 - MP 9.848)	1	2	2WU	NO	NO	2	21	100	4.00	760	2,290		137	700
13CR.10571.13	Madison	2	NC 209	FROM NEW MIX AT 1 MILE SOUTH OF HOT SPRINGS CITY LIMITS TO 2.5 MILES SOUTH (MP 18.66 - MP 17.16)	1	2	2WU	NO	NO	1.5	20	75	3.00	450	1,636		98	500
13CR.10571.13	Madison	3	NC 209	FROM HAYWOOD COUNTY LINE NORTH FOR 3.5 MILES (MP 0.0 - MP 3.50)	1	2	2WU	NO	NO	3.5	20	91	7.00	450	3,818		229	1,100
TOTAL FOR PROJ NO. 13CR.10571.13										7		266	14.00	1,660	7,744		464	2,300
13CR.20571.14	Madison	4	SR 1552 (PARKWAY VIEW RD)	FROM MARS HILL CITY LIMITS TO SR 1549 (MP 0 - MP 0.53)	2	2	2WU	NO	NO	0.53	20	27				568	38	500
TOTAL FOR PROJ NO. 13CR.20571.14										0.53		27				568	38	500
GRAND TOTAL										7.53		293	14.00	1,660	7,744		502	2,800

Note: Shoulder work on map 4 will be done by State Forces
Note : Any signal loop work will be done by FA

THERMOPLASTIC AND PAINT QUANTITIES

PROJECT NO	COUNTY	MAP NO	ROUTE	DESCRIPTION	TYP NO	LANES	LANE TYPE	LENGTH	WIDTH	4413000000-E	4457000000-N	4810000000-E		4847000000-E		4905000000-N
										WORK ZONE ADVANCE/GENERAL WARNING SIGNING SF	TEMPORARY TRAFFIC CONTROL LS	PAINT PAVEMENT MARKING LINES (4") WHITE LF	PAINT PAVEMENT MARKING LINES (4") YELLOW LF	POLYUREA PAVEMENT MARKING LINES (4") WHITE (HIGHLY REFLECTIVE ELEMENTS) LF	POLYUREA PAVEMENT MARKING LINES (4") YELLOW (HIGHLY REFLECTIVE ELEMENTS) LF	SNOWPLOWABLE PAVEMENT MARKERS EA
13CR.10571.13	Madison	1	NC 63	FROM NC 209 TO NEW MIX (MP 11.848 - MP 9.848)	1	2	2WU	2	21					21,120	21,120	132
13CR.10571.13	Madison	2	NC 209	FROM NEW MIX AT 1 MILE SOUTH OF HOT SPRINGS CITY LIMITS TO 2.5 MILES SOUTH (MP 18.66 - MP 17.16)	1	2	2WU	1.5	20	784	*			15,840	15,840	132
13CR.10571.13	Madison	3	NC 209	FROM HAYWOOD COUNTY LINE NORTH FOR 3.5 MILES (MP 0.0 - MP 3.50)	1	2	2WU	3.5	20					36,960	36,960	347
TOTAL FOR PROJ NO. 13CR.10571.13								7		784	1			73,920	73,920	611
											147,840					
13CR.20571.14	Madison	4	SR 1552 (PARKWAY VIEW RD)	FROM MARS HILL CITY LIMITS TO SR 1549 (MP 0 - MP 0.53)	2	2	2WU	0.53	20	59	*	11,194	11,194			
TOTAL FOR PROJ NO. 13CR.20571.14								0.53		59	1	11,194	11,194			
											22,388					
GRAND TOTAL								7.53		843	1	11,194	11,194	73,920	73,920	611
											22,388					
											147,840					