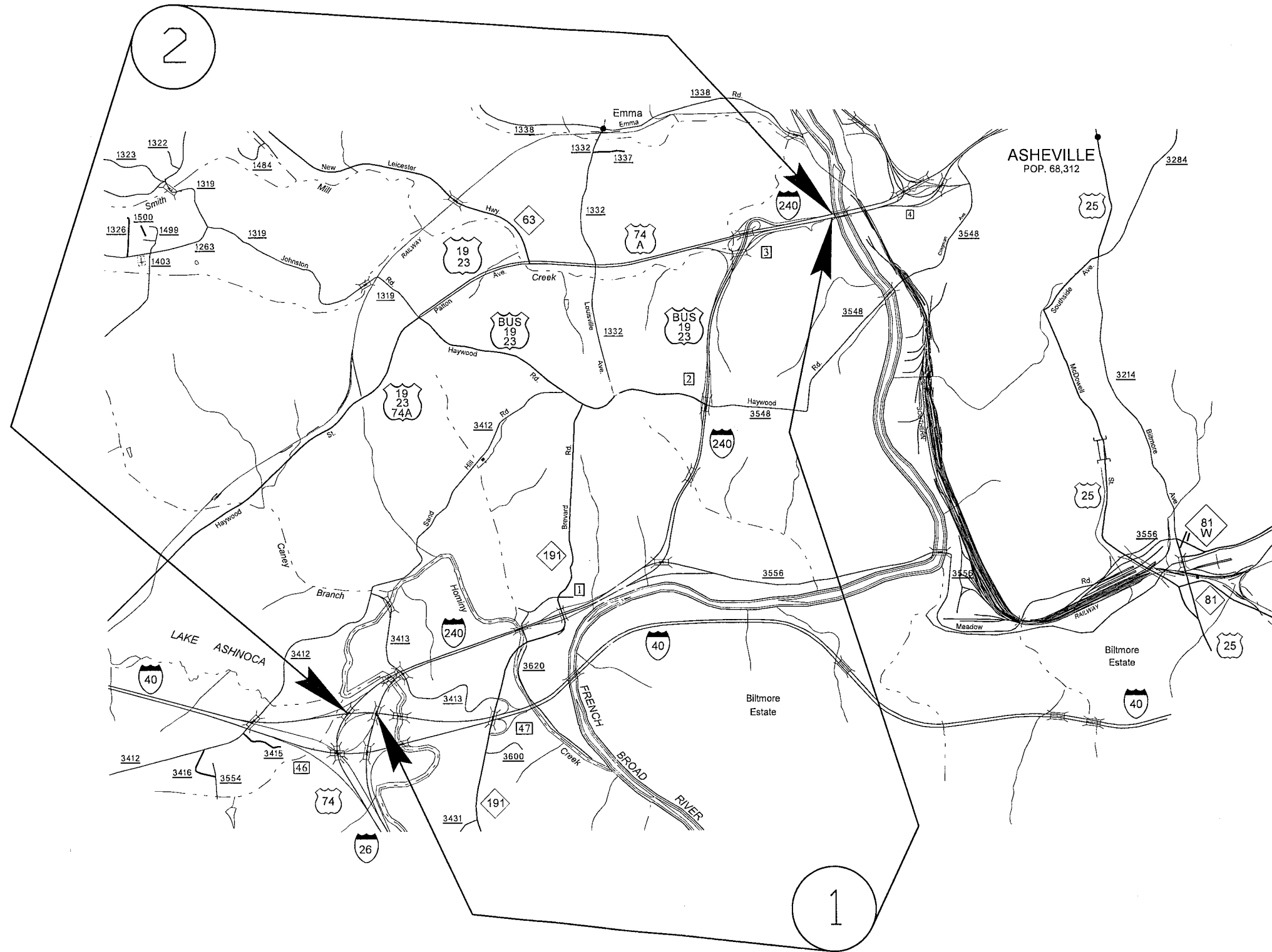
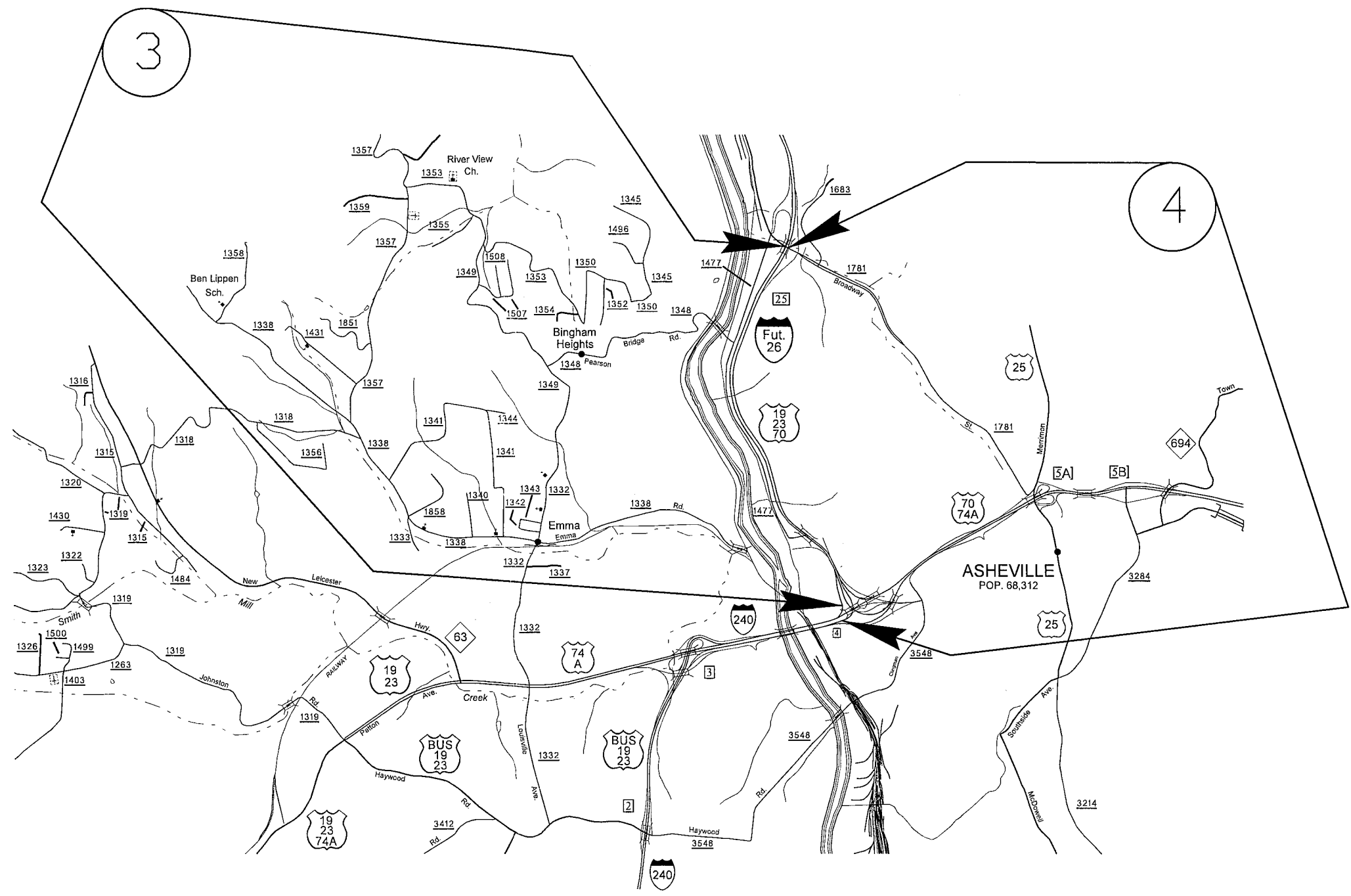


PROJECT NO.	SHEET NO.	TOTAL SHEETS
45830.3.FS1		



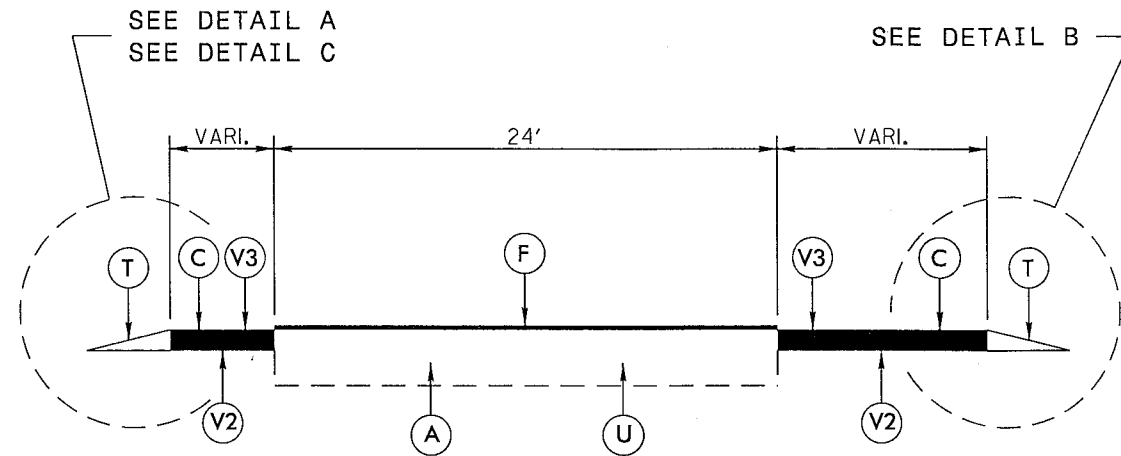
BUNCOMBE COUNTY

PROJECT NO.	SHEET NO.	TOTAL SHEETS
45830.3.FSI	2	

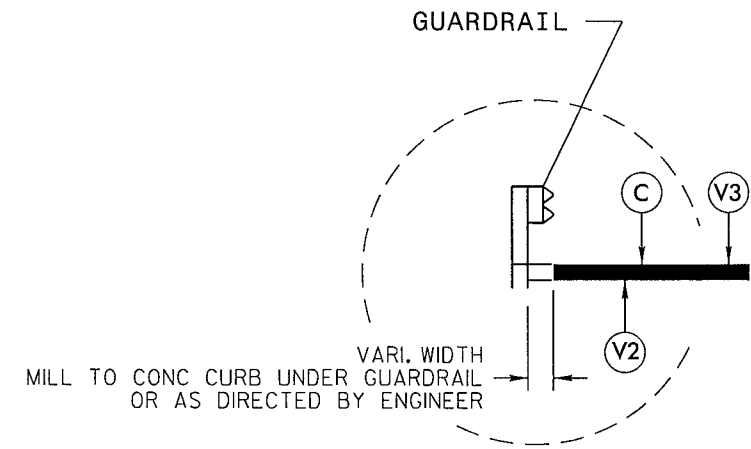


BUNCOMBE COUNTY

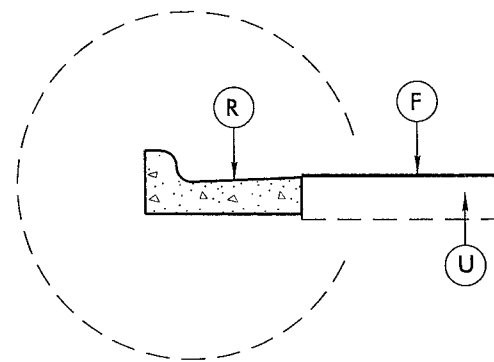
PROJECT NO.	SHEET NO.	TOTAL SHEETS
45830.3.FS1	3	



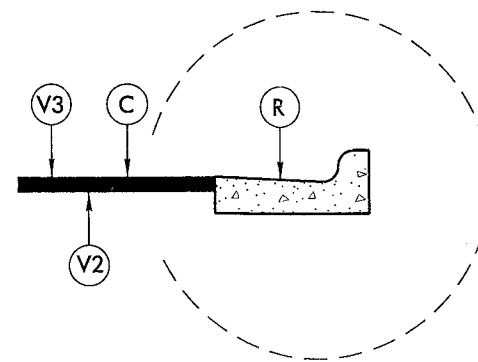
TYPICAL SECTION NO. 1



DETAIL C
VARIOUS LOCATIONS



DETAIL A
VARIOUS LOCATIONS
WITH NO INSIDE SHOULDER

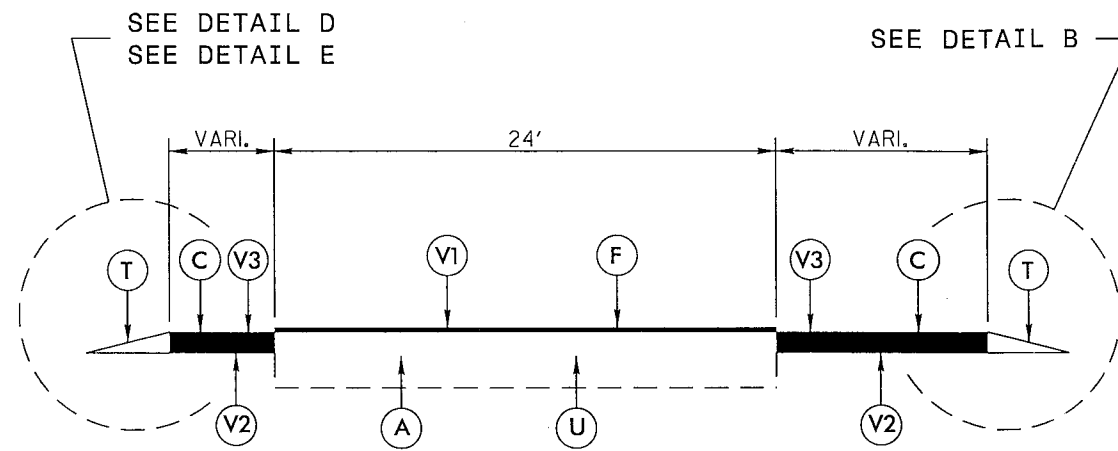


DETAIL B
VARIOUS LOCATIONS

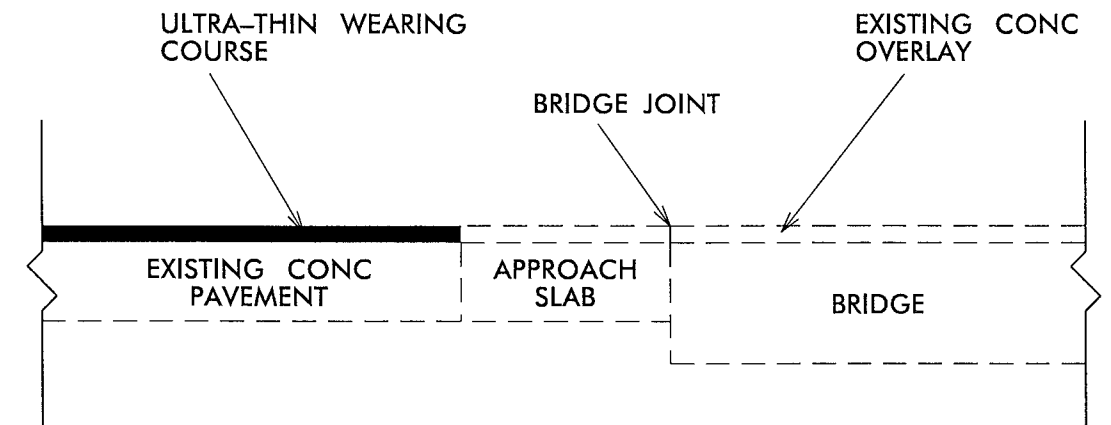
PAVEMENT SCHEDULE	
A	8" CONCRETE PAVEMENT REPAIR (AT LOCATIONS TO BE DETERMINED BY THE ENGINEER)
C	PROP. APPROX. 3" ASPHALT CONCRETE SURFACE COURSE, TYPE SF9.5A, AT AN AVERAGE RATE OF 165 LBS. PER SQ. YARD IN EACH OF TWO LAYERS
F	ULTRA-THIN BONDED WEARING COURSE
R	EXISTING 2'-6" CONCRETE CURB AND GUTTER
T	SHOULDER RECONSTRUCTION
U	EXISTING PAVEMENT (CONCRETE)
V2	MILLING ASPHALT PAVEMENT, 3" DEPTH
V3	MILLED RUMBLE STRIPS (ASPHALT CONCRETE)

BUNCOMBE COUNTY

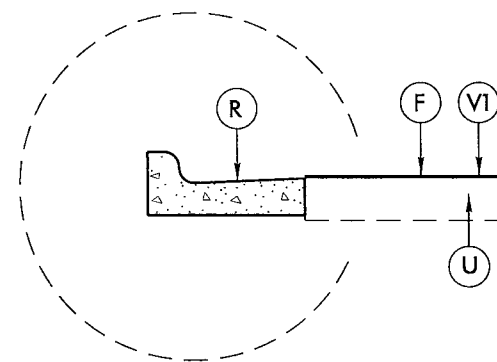
PROJECT NO.	SHEET NO.	TOTAL SHEETS
45830.3.FS1	4	



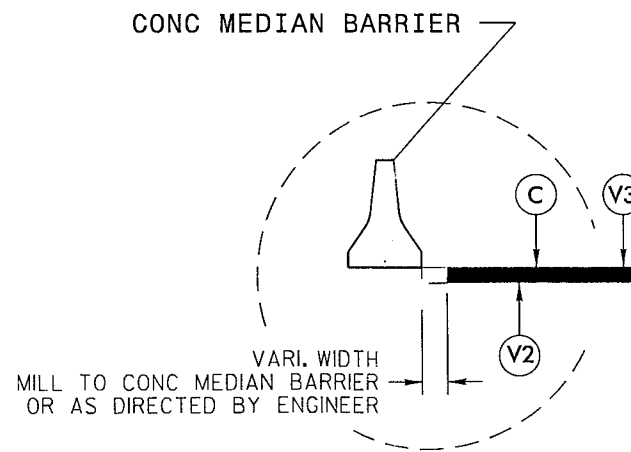
TYPICAL SECTION NO. 2
 AT LOCATIONS WITH EXISTING
 ULTRA-THIN BONDED WEARING COURSE



TIE-IN DETAIL AT BRIDGE
 TIE ULTRA-THIN WEARING COURSE TO
 EXISTING CONC OVERLAY ON BRIDGE DECKS
 AND APPROACH SLABS.



DETAIL D
 VARIOUS LOCATIONS
 WITH NO INSIDE SHOULDER



DETAIL E
 VARIOUS LOCATIONS

PAVEMENT SCHEDULE	
A	8" CONCRETE PAVEMENT REPAIR (AT LOCATIONS TO BE DETERMINED BY THE ENGINEER)
C	PROP. APPROX. 3" ASPHALT CONCRETE SURFACE COURSE, TYPE SF9.5A, AT AN AVERAGE RATE OF 165 LBS. PER SQ. YARD IN EACH OF TWO LAYERS
F	ULTRA-THIN BONDED WEARING COURSE
R	EXISTING 2'-6" CONCRETE CURB AND GUTTER
T	SHOULDER RECONSTRUCTION
U	EXISTING PAVEMENT (CONCRETE)
V1	MILLING ASPHALT PAVEMENT, 5/8" DEPTH
V2	MILLING ASPHALT PAVEMENT, 3" DEPTH
V3	MILLED RUMBLE STRIPS (ASPHALT CONCRETE)

BUNCOMBE COUNTY

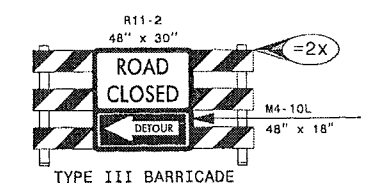
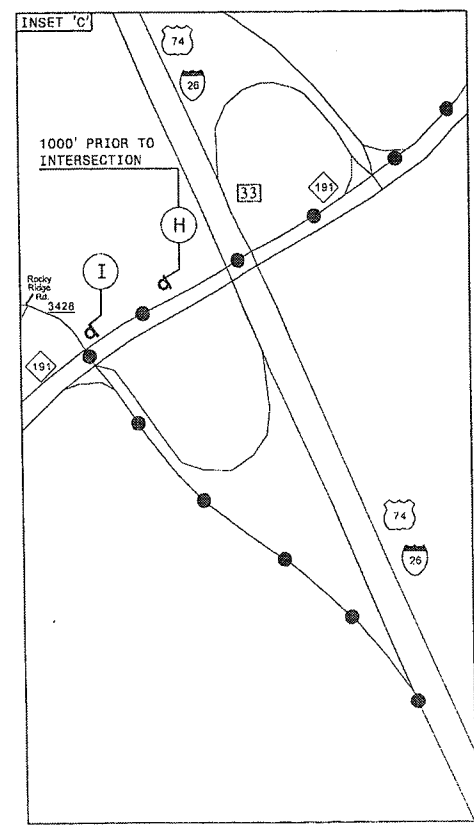
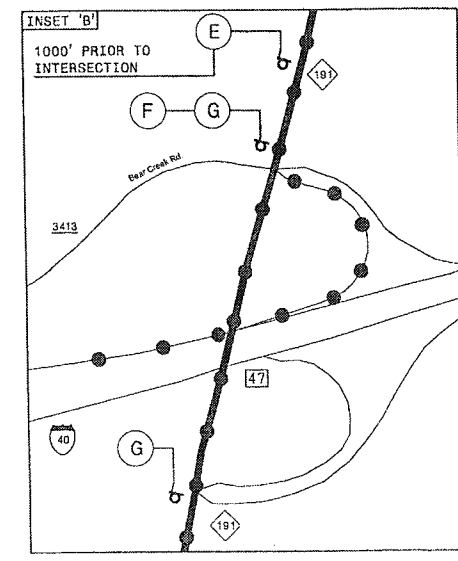
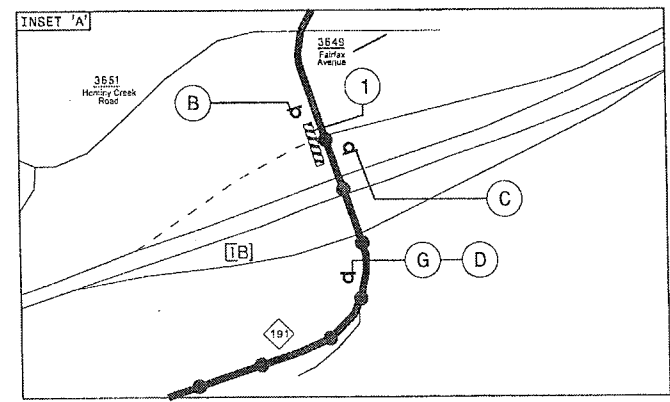
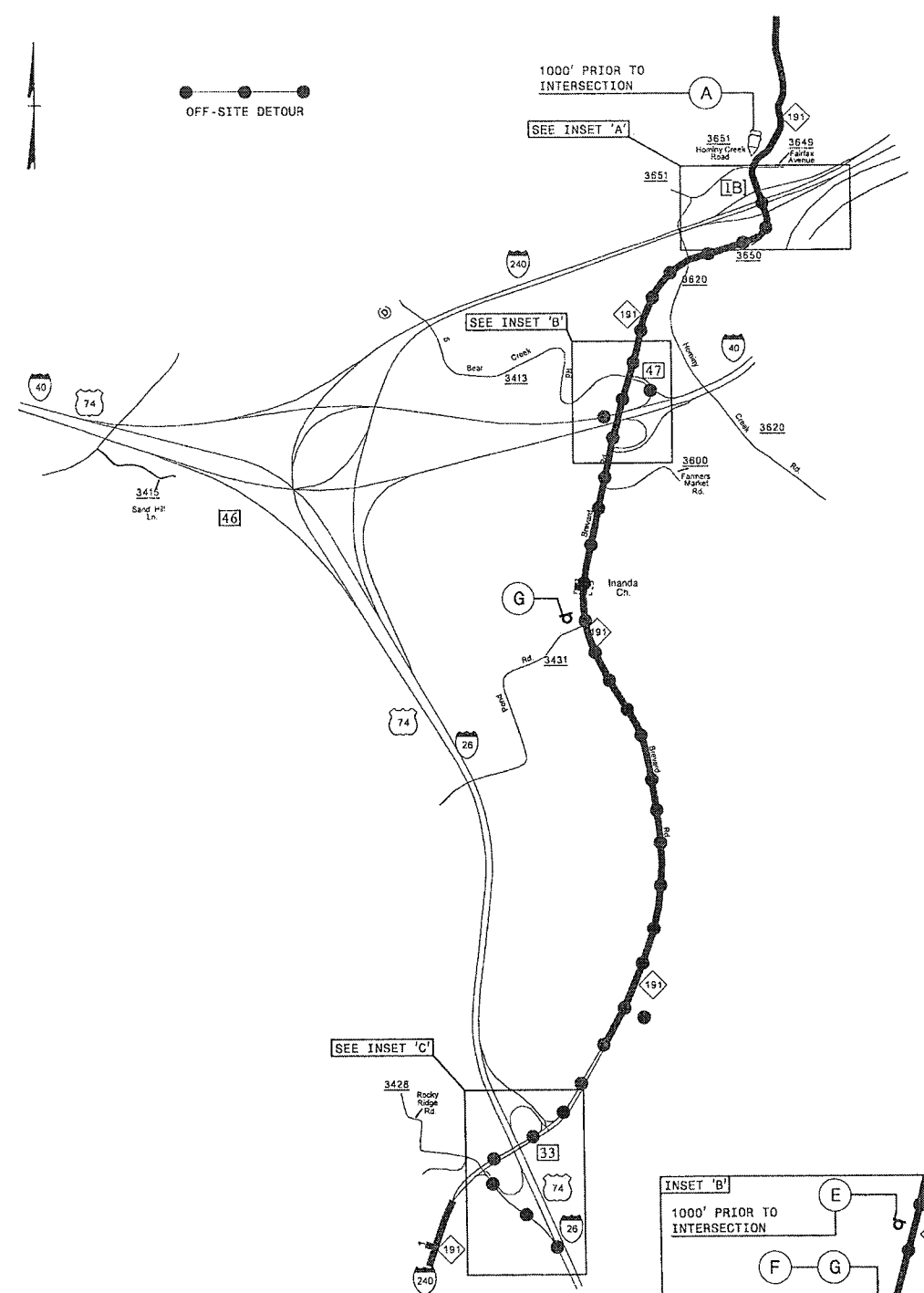
PROJECT NO.	SHEET NO.	TOTAL NO.
I-5608	45830.3.F51	5

SUMMARY OF QUANTITIES

PROJECT NO.	COUNTY	MAP NO.	ROUTE	DESCRIPTION	TYP	LANES	LANE TYPE	FINAL SURFACE TESTING REQUIRED	WARM MIX ASPHALT REQUIRED	LENGTH MI	WIDTH FT	UNDERCUT EXCAVATION CY	GEOTEXTILE FOR SOIL STABILIZATION SY	CLASS IV SUBGRADE STABILIZATION TON	AGGREGATE BASE COURSE TON	SHOULDER RECONSTRUCTION SMI	MILLING ASPHALT PAVEMENT, 3" DEPTH SY	ASPHALT CONC SURFACE COURSE, TYPE SF9.5A TON	ASPHALT BINDER FOR PLANT MIX TON	POLYMER MODIFIED ASPHALT BINDER FOR PLANT MIX TON	ULTRA-THIN BONDED WEARING COURSE TON	APPLICATION OF ULTRATHIN HOT MIX SY	MILLED RUMBLE STRIPS (ASPHALT CEMENT CONCRETE) LF	GENERIC PAVING ITEM REPAIR OF JOINTED CONCRETE PAVEMENT SLABS SY	GENERIC PAVING ITEM FINE MILLING SY	STEEL BM GUARDRAIL LF	GUARDRAIL ANCHOR UNITS, TYPE 350 EA	REMOVE EXISTING GUARDRAIL LF
I-5608	Buncombe	1	I-240 EASTBOUND	FROM I-40/I-26/I-240 INTERCHANGE TO CAPTAIN JEFF BOWEN BRIDGE	1	2	MD	NO	NO	3.34	25	96	577	195	500	1.30	21,320	3,520	236	108	2,085	61,160	34,144	2,885		400.00	10	900
		2	I-240 WESTBOUND	FROM CAPTAIN JEFF BOWEN BRIDGE TO I-40/I-26/I-240 INTERCHANGE	1	2	MD	NO	NO	3.49	25	95	571	193	500	1.20	22,910	3,780	253	107	2,065	60,573	36,144	2,855		360.00	9	810
		3	FUT. I-26 EASTBOUND	FROM SR 1781 (BROADWAY ST) TO I-240/FUT. I-26 INTERCHANGE	2	2	MD	NO	NO	1.72	25	45	268	91	500	1.30	9,535	1,575	106	51	975	28,600	17,990	1,340	27,820	40.00	1	90
		4	FUT. I-26 WESTBOUND	FROM I-240/FUT. I-26 INTERCHANGE TO SR 1781 (BROADWAY ST)	2	2	MD	NO	NO	1.81	25	48	284	96	500	1.40	9,650	1,595	107	54	1,030	30,213	17,520	1,420	29,330			
TOTAL FOR PROJ NO. I-5608										10.36		284	1,700	575	2,000	5.20	63,415	10,470	702	320	6,155	180,546	105,798	8,500	57,150	800.00	20	1,800
GRAND TOTAL										10.36		284	1,700	575	2,000	5.20	63,415	10,470	702	320	6,155	180,546	105,798	8,500	57,150	800	20	1,800.00

THERMOPLASTIC AND PAINT QUANTITIES

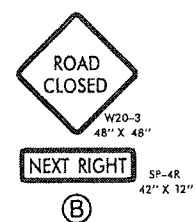
PROJECT NO.	COUNTY	MAP NO.	ROUTE	DESCRIPTION	TYP	LANES	LANE TYPE	LENGTH	WIDTH	4413000000-E	4457000000-N	4510000000-N	4721000000-E					4725000000-E		4815000000-E		4847100000-E		4847120000-E	4892000000-N	4905000000-N						
										WORK ZONE ADVANCE/GENERAL WARNING SIGNING SF	TEMPORARY TRAFFIC CONTROL LS	LAW ENFORCEMENT HR	THERMOPLASTIC PAVEMENT MARKING CHARACTER (120 MIL){I-26} EA	THERMOPLASTIC PAVEMENT MARKING CHARACTER (120 MIL){LEFT} EA	THERMOPLASTIC PAVEMENT MARKING CHARACTER (120 MIL){LANE} EA	THERMOPLASTIC PAVEMENT MARKING CHARACTER (120 MIL){EXIT} EA	THERMOPLASTIC PAVEMENT MARKING CHARACTERS (120 MILS){ONLY} EA	THERMOPLASTIC PAVEMENT MARKING CHARACTER (120 MIL){NEXT} EA	THERMOPLASTIC PAVEMENT MARKING CHARACTER (120 MIL){RIGHT} EA	THERMOPLASTIC PAVEMENT MARKING CHARACTER (90 MILS) RT ARROW EA	THERMOPLASTIC PAVEMENT MARKING SYMBOLS (90 MILS) STR & RT ARROW EA	PAINT PAVEMENT MARKING LINES (6") WHITE LF	PAINT PAVEMENT MARKING LINES (6") YELLOW LF	POLYUREA PAVEMENT MARKING LINES (6", HIGHLY REFLECTIVE ELEMENTS) WHITE LF	POLYUREA PAVEMENT MARKING LINES (6", HIGHLY REFLECTIVE ELEMENTS) YELLOW LF	POLYUREA PAVEMENT MARKING LINES (12", HIGHLY REFLECTIVE ELEMENTS) WHITE LF	GENERIC PAVEMENT MARKING ITEM INTERSTATE SHIELD, SPECIAL PAVEMENT MARKING EA	SNOWPLOWABLE PAVEMENT MARKERS EA				
I-5608	Buncombe	1	I-240 EASTBOUND	FROM I-40/I-26/I-240 INTERCHANGE TO CAPTAIN JEFF BOWEN BRIDGE	1	2	MD	3.34	25	148	0.25	27.5	12	12	8	4										25,500	19,900	4,010	1	433		
		2	I-240 WESTBOUND	FROM CAPTAIN JEFF BOWEN BRIDGE TO I-40/I-26/I-240 INTERCHANGE	1	2	MD	3.49	25	148	0.25	27.5					12			6	6					24,650	18,800	5,210		454		
		3	FUT. I-26 EASTBOUND	FROM SR 1781 (BROADWAY ST) TO I-240/FUT. I-26 INTERCHANGE	1	2	MD	1.72	25	148	0.25	27.5	8		4	4										24,740	19,560	12,370	9,780	564	1	146
		4	FUT. I-26 WESTBOUND	FROM I-240/FUT. I-26 INTERCHANGE TO SR 1781 (BROADWAY ST)	1	2	MD	1.81	25	148	0.25	27.5														25,220	20,820	12,610	10,410	1,898		196
TOTAL FOR PROJ NO. I-5608										10.36		110	20	12	12	8	12	4	5	6	6	49,960	40,380	75,130	58,890	11,682	2	1,229				
GRAND TOTAL										10.36		110	20	12	12	8	12	4	5	6	6	49,960	40,380	75,130	58,890	11,682	2	1,229				



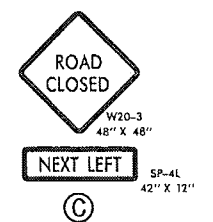
MESSAGE NO. 1	MESSAGE NO. 2
I-26 WB RAMP CLOSED	I-26/40 DETOUR AHEAD
CHANGEABLE MESSAGE SIGN	

1

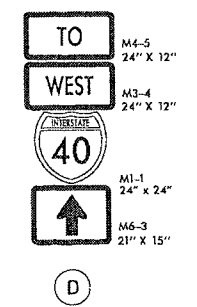
A



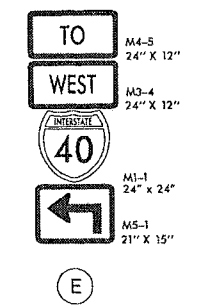
B



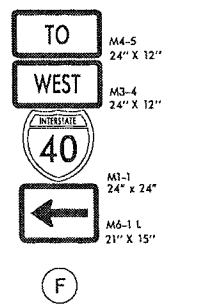
C



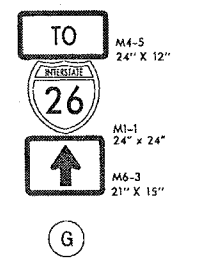
D



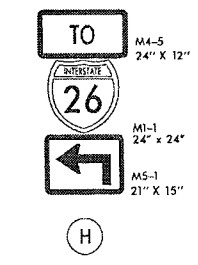
E



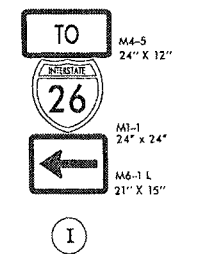
F



G

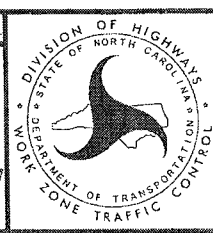


H



I

APPROVED: _____ DATE: _____



RAMP 1B
OFF-SITE
DETOUR

6/18/2014
 S:\TMU\WZTC\Resurfacing\2014 Resurfacing\2014 Western\2014_Div3\C203488_J-5608_45830.IFSI_Buncombe_I-240_m2.sh\I-5608_TC-TMP_IB-SWB.dgn
 User:shanson

MESSAGE NO. 1 EXIT 1C AMBOY RD CLOSED	MESSAGE NO. 2 AMBOY RD DETOUR AHEAD
--	--

CHANGEABLE MESSAGE SIGN

(A)

MESSAGE NO. 1 DETOUR	MESSAGE NO. 2 USE
-------------------------	----------------------

CHANGEABLE MESSAGE SIGN

(B)

MESSAGE NO. 1 DETOUR	MESSAGE NO. 2 NEXT
-------------------------	-----------------------

CHANGEABLE MESSAGE SIGN

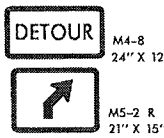
(C)



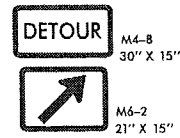
(D)



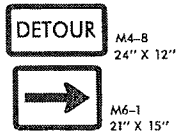
(E)



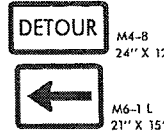
(F)



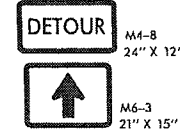
(G)



(H)



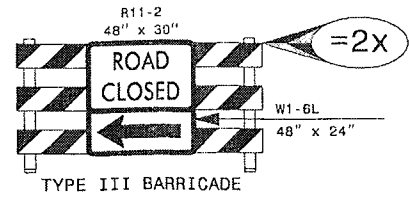
(I)



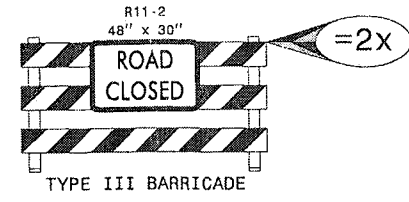
(J)



(K)



(1)



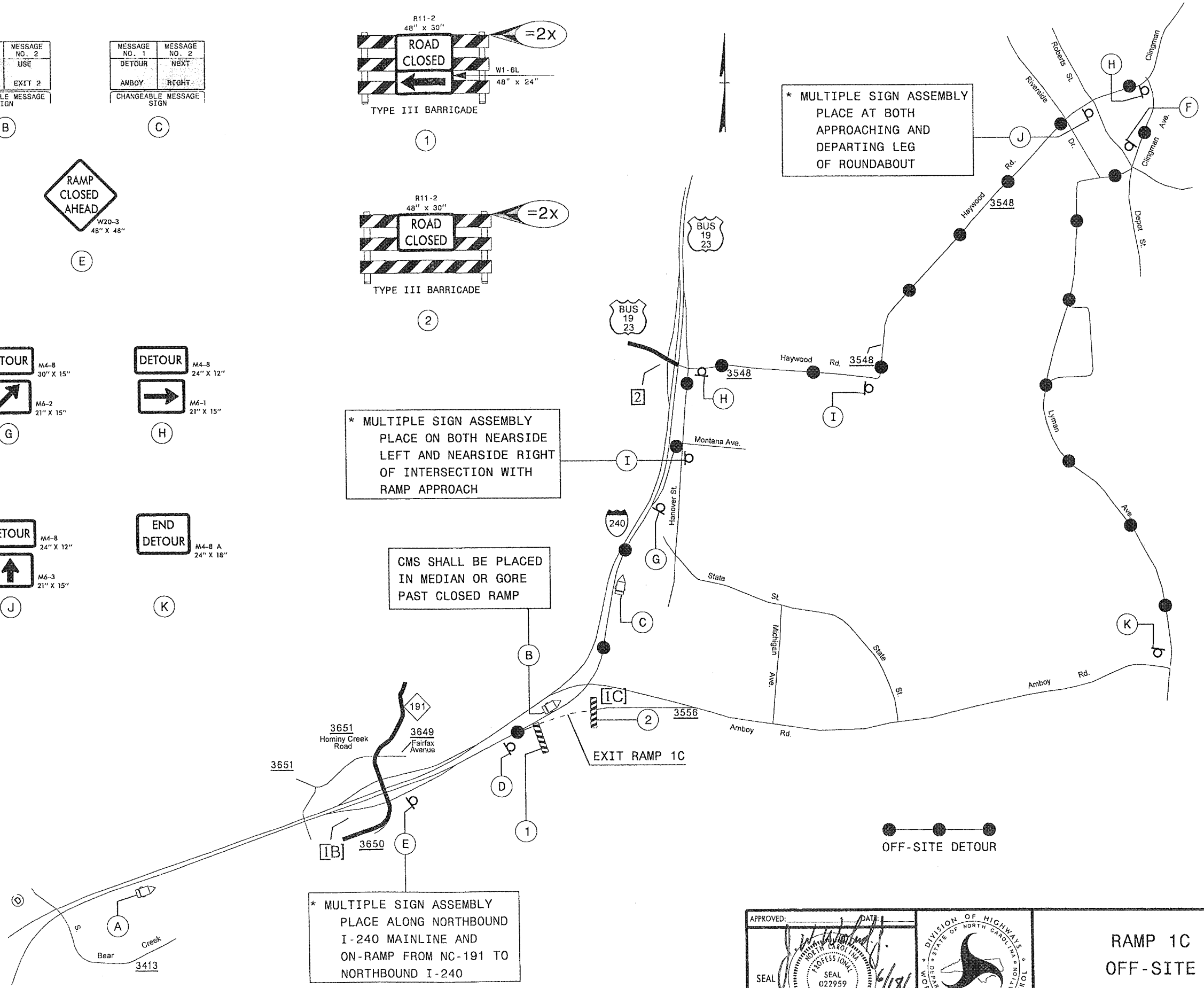
(2)

* MULTIPLE SIGN ASSEMBLY
PLACE ON BOTH NEARSIDE
LEFT AND NEARSIDE RIGHT
OF INTERSECTION WITH
RAMP APPROACH

CMS SHALL BE PLACED
IN MEDIAN OR GORE
PAST CLOSED RAMP

* MULTIPLE SIGN ASSEMBLY
PLACE ALONG NORTHBOUND
I-240 MAINLINE AND
ON-RAMP FROM NC-191 TO
NORTHBOUND I-240

* MULTIPLE SIGN ASSEMBLY
PLACE AT BOTH
APPROACHING AND
DEPARTING LEG
OF ROUNDABOUT

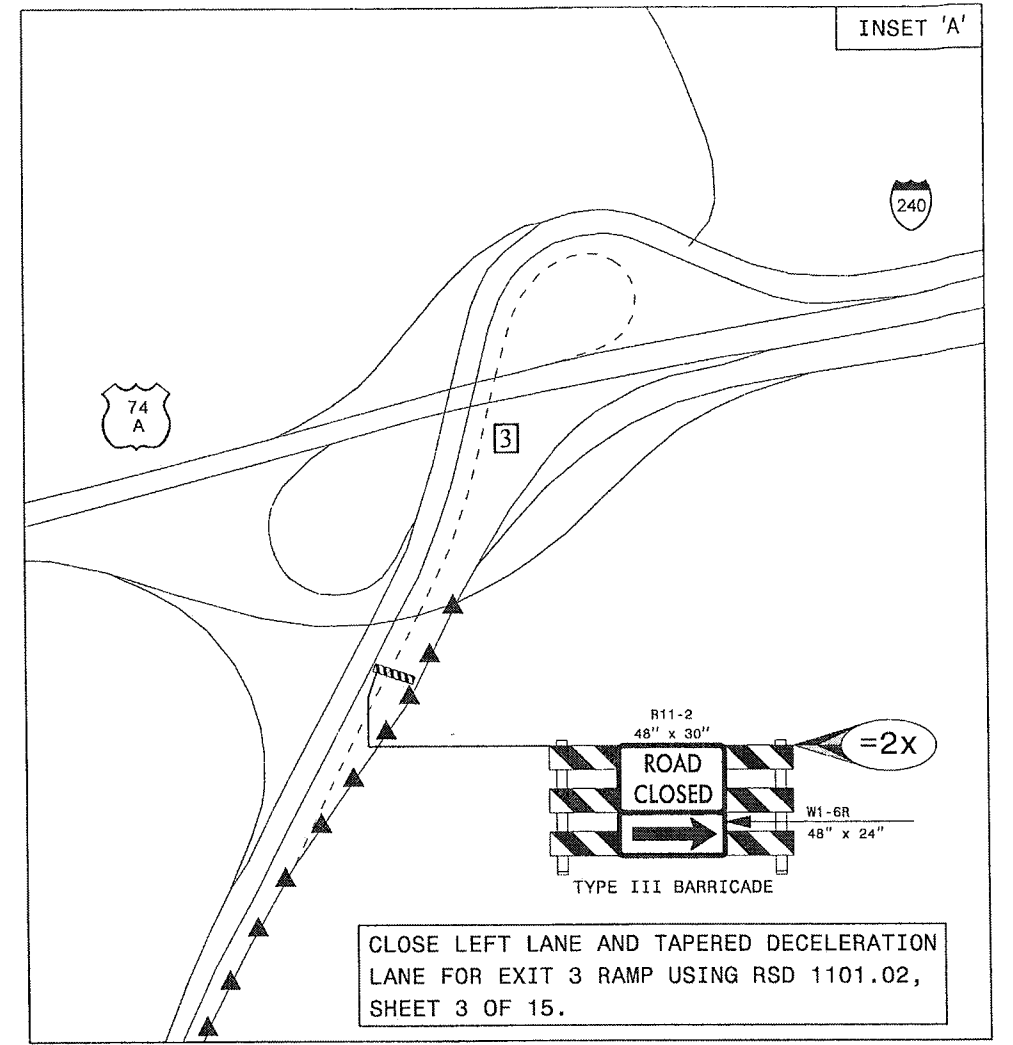
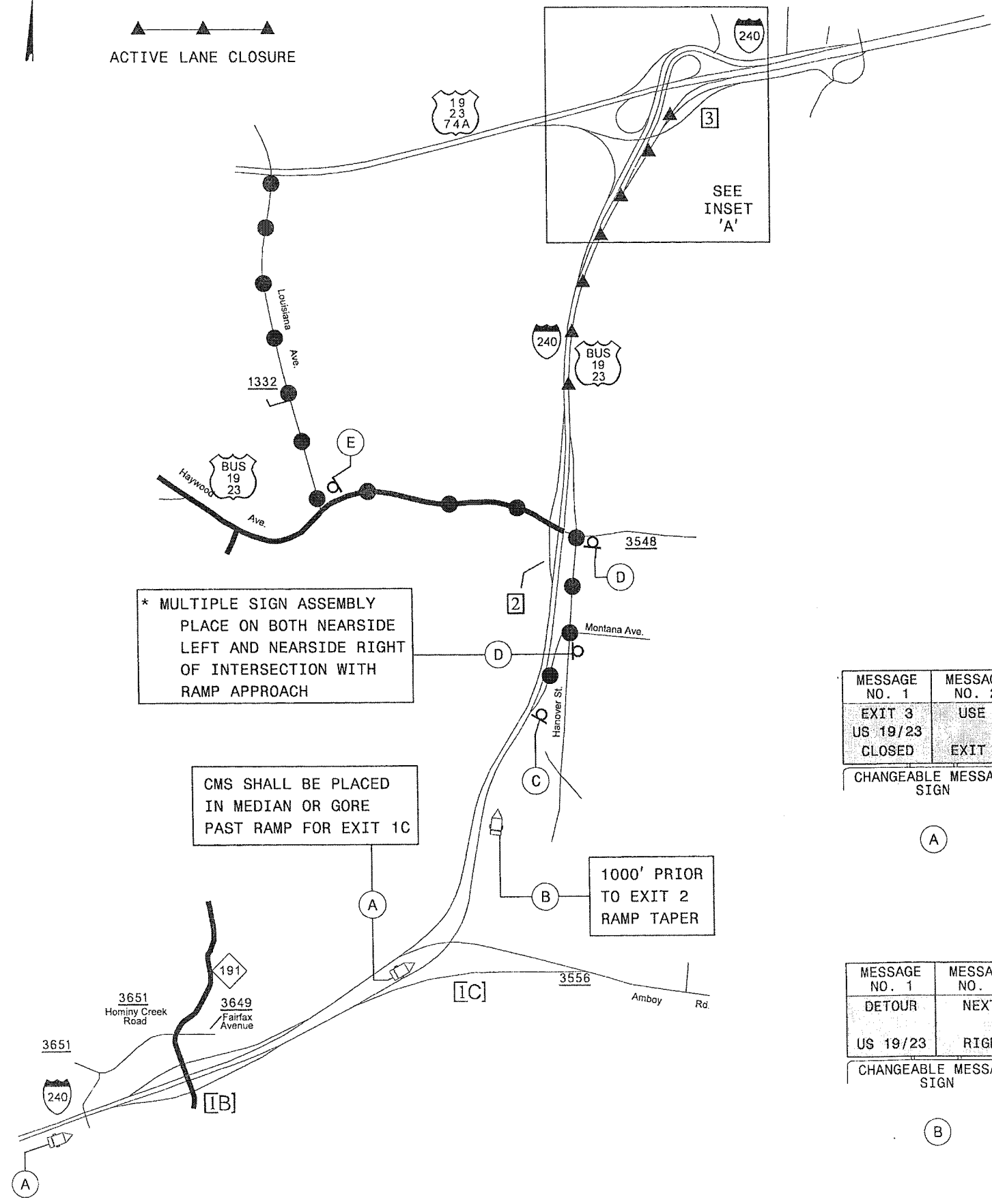
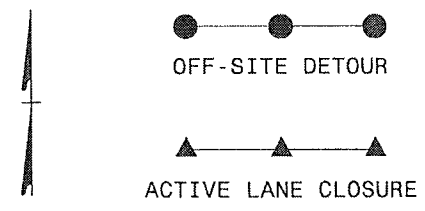


6/18/2014 WZTC Resurfacing 2014 Western 2014 Div 3 C203488 I-5608 45830.F51 Buncombe I-240 m2.sh\I-5608.TC.TMP.ic.dgn
 User:stms3gn

APPROVED: _____ DATE: 6/18/14

SEAL

RAMP 1C
OFF-SITE
DETOUR



MESSAGE NO. 1	MESSAGE NO. 2
EXIT 3	USE
US 19/23	EXIT 2
CLOSED	

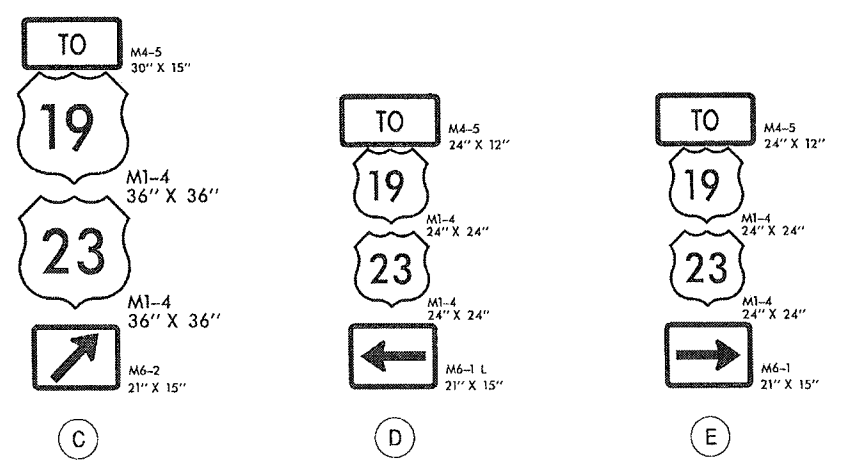
CHANGEABLE MESSAGE SIGN

(A)

MESSAGE NO. 1	MESSAGE NO. 2
DETOUR	NEXT
US 19/23	RIGHT

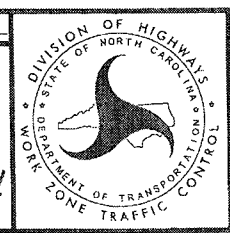
CHANGEABLE MESSAGE SIGN

(B)



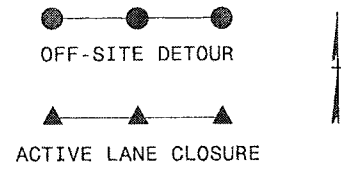
APPROVED: [Signature] DATE: 6/18/14

SEAL: PROFESSIONAL ENGINEER, STATE OF NORTH CAROLINA, SEAL 19862, W. WOODARD, JR.



RAMP 3A
OFF-SITE
DETOUR

6/18/2014
 S:\T\W\WZ\TCV\Resur facing\2014\Resur facing\2014 Western\2014_Div\3\203\488_I-5608_45830.fsi_Buncombe_I-240_m2.sn\I-5608_TC_TMP_3A-NB.dgn
 User:shoascn

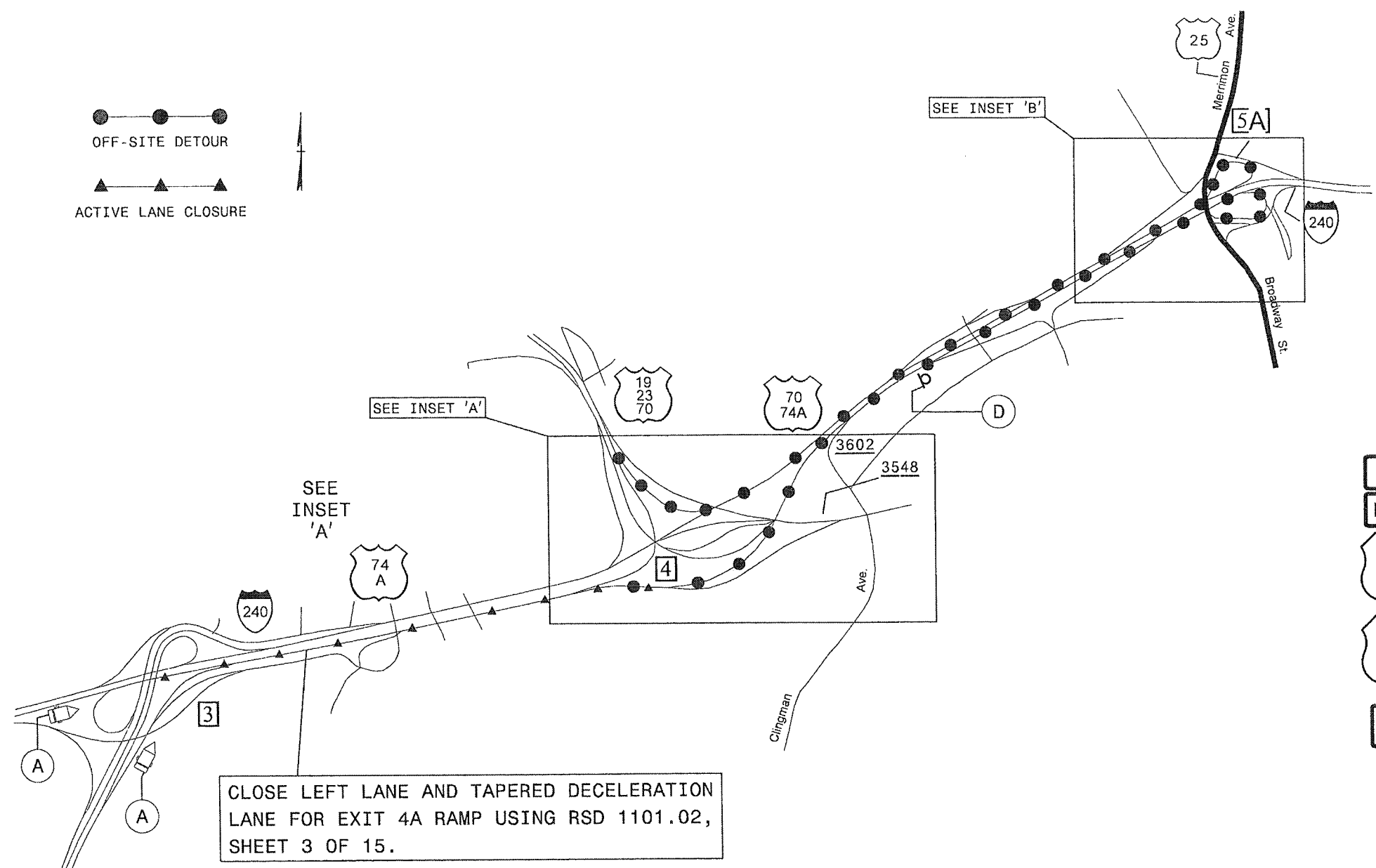


MESSAGE NO. 1	MESSAGE NO. 2
EXIT 4A US 19/23 CLOSED	DETOUR AHEAD
CHANGEABLE MESSAGE SIGN	

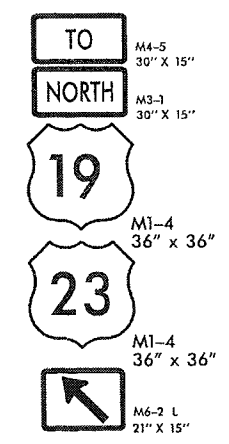
MESSAGE NO. 1	MESSAGE NO. 2
DETOUR US 19/23 NORTH	EXIT NEXT RIGHT
CHANGEABLE MESSAGE SIGN	

(A)

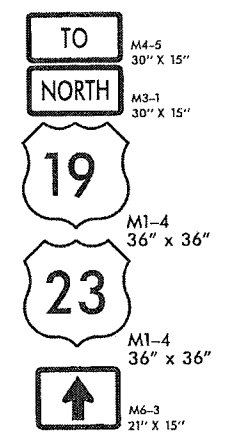
(B)



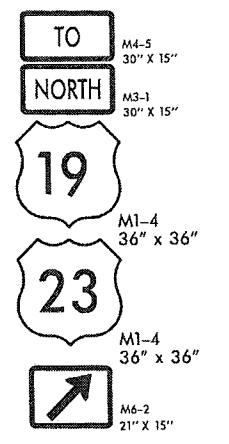
CLOSE LEFT LANE AND TAPERED DECELERATION LANE FOR EXIT 4A RAMP USING RSD 1101.02, SHEET 3 OF 15.



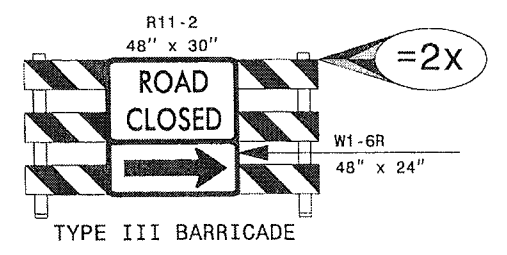
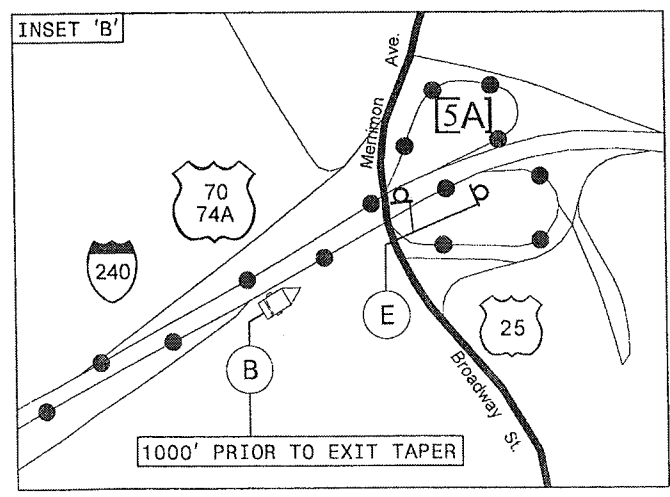
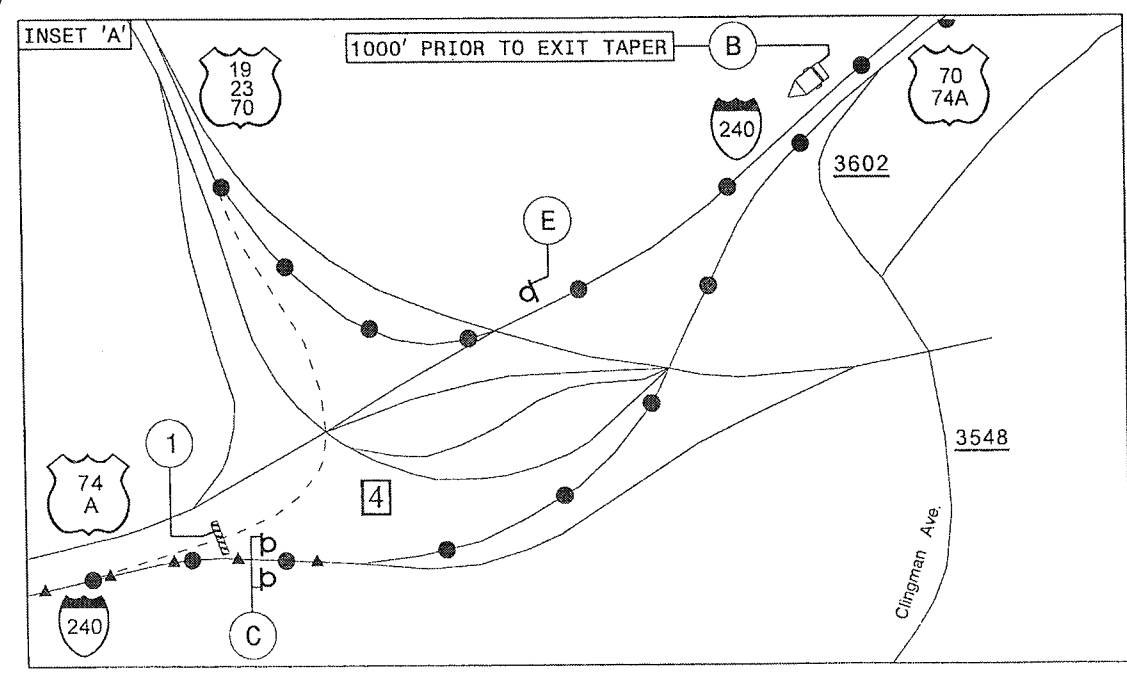
(C)



(D)



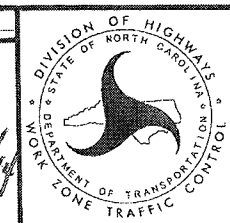
(E)



(1)

APPROVED: *[Signature]* DATE: 6/19/14

SEAL: PROFESSIONAL ENGINEER SEAL 19862 J.W. WOCCIARD JR.



RAMP 4A
OFF-SITE
DETOUR

6/18/2014 5:11:11 PM J:\WZTC\Resur facing\2014 Western\2014_Div\3\C203488_I-5608_45830.L\Fsi.Burcombe_I-240.m2.sh\I-5608_TC_TMP_4A-NB.dgn User:ishassan

PROJECT NO.	SHEET NO.	TOTAL SHEETS
45830.3.FS1	PM-1	

Route Shield Detail

