

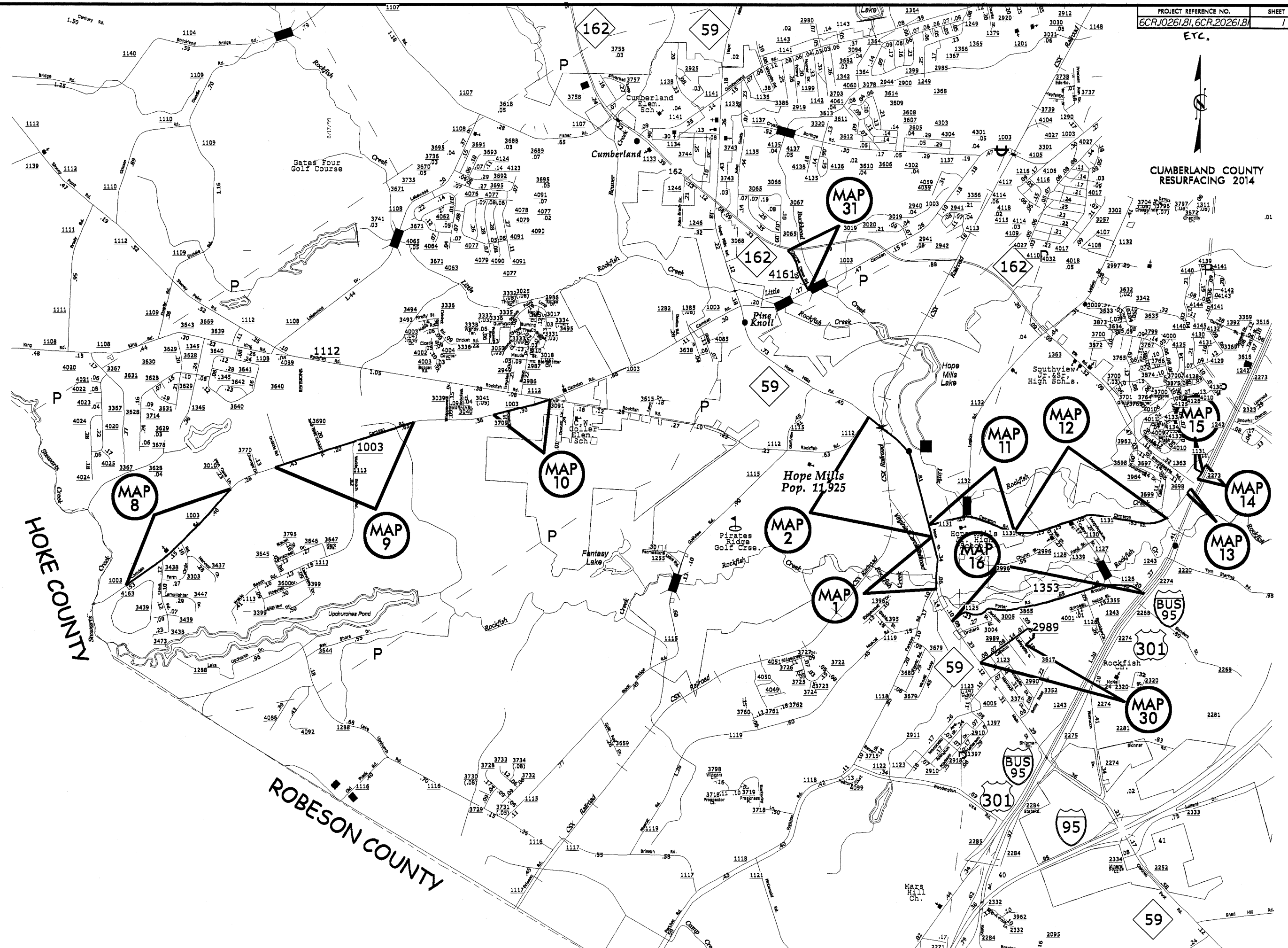
8/17/99
REVISIONS
C:\APR-2014\Projects\Resurfacing\Projects\Division 6\Cumberland\HARNETT_REVISED_FILES\CUMBERLAND_HARNETT_RESURF_MAPS.dgn
3:33:51 PM 8/17/99

PROJECT REFERENCE NO.	SHEET NO.
6CR10261.81, 6CR20261.81	1

ETC.



CUMBERLAND COUNTY RESURFACING 2014



CUMBERLAND COUNTY
RESURFACING 2014



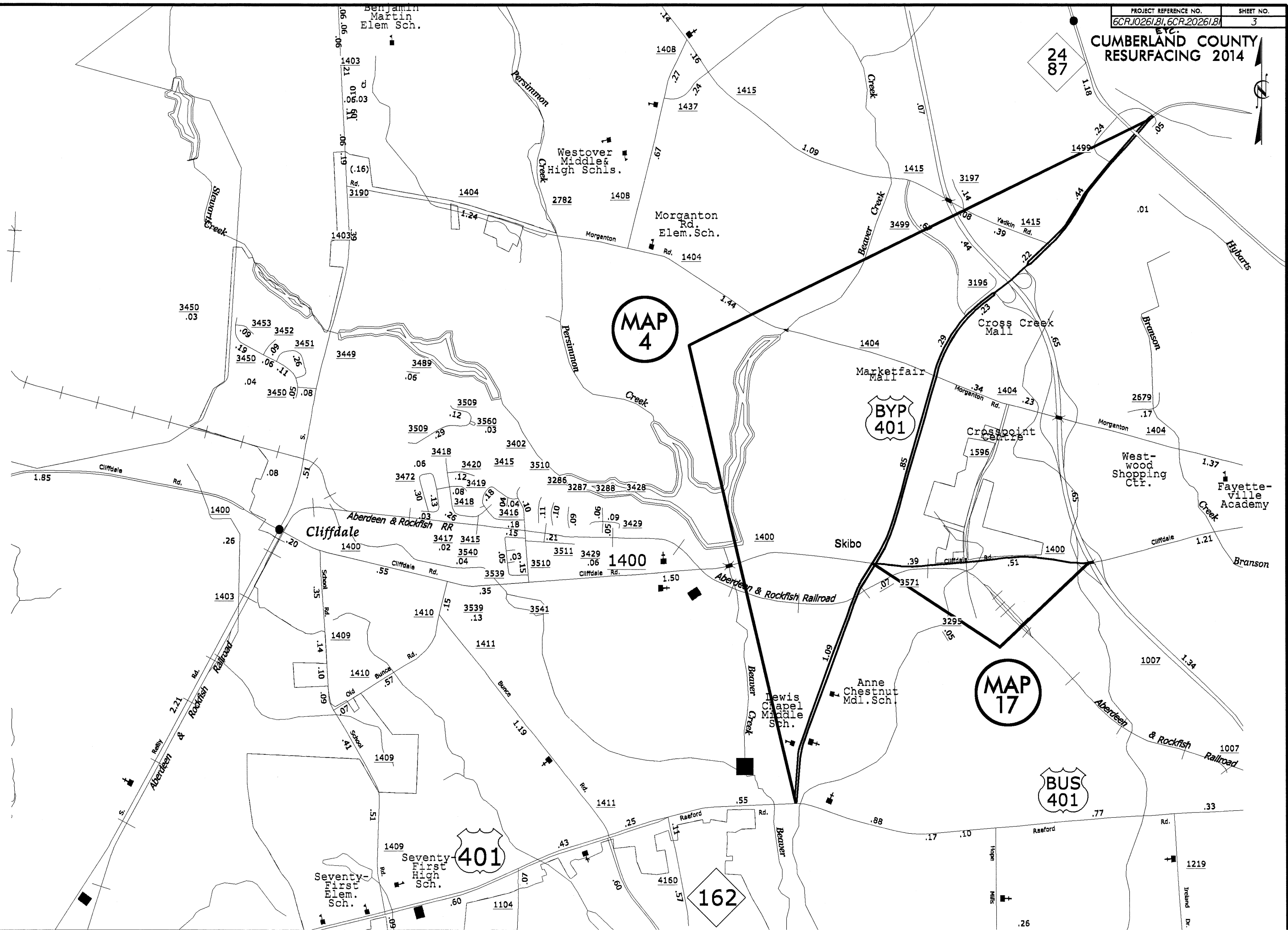
MAP 4

MAP 17

BUS 401

162

24
87



Benjamin Martin Elem Sch.

Westover Middle & High Schls.

Morganton Rd. Elem. Sch.

Cliffdale

Skibo

Westwood Shopping Ctr.

Fayetteville Academy

Lewis Chapel Middle Sch.
Anne Chestnut Mdl. Sch.

Seventy-First High Sch.
Seventy-First Elem. Sch.

401

1219



**CUMBERLAND COUNTY
RESURFACING 2014**

SAMPSON COUNTY
South

MAP 21

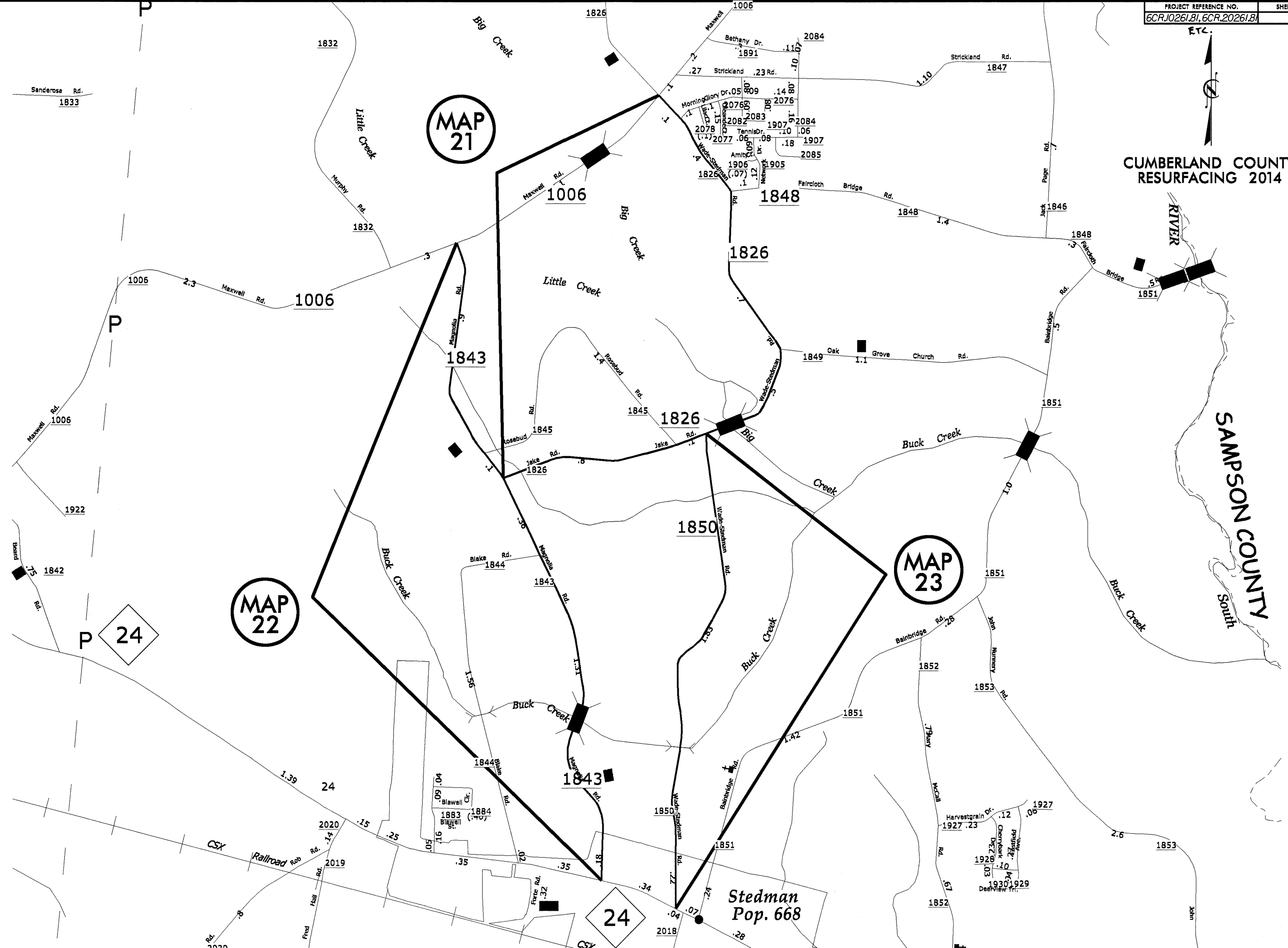
MAP 22

MAP 23

24

24

**Stedman
Pop. 668**



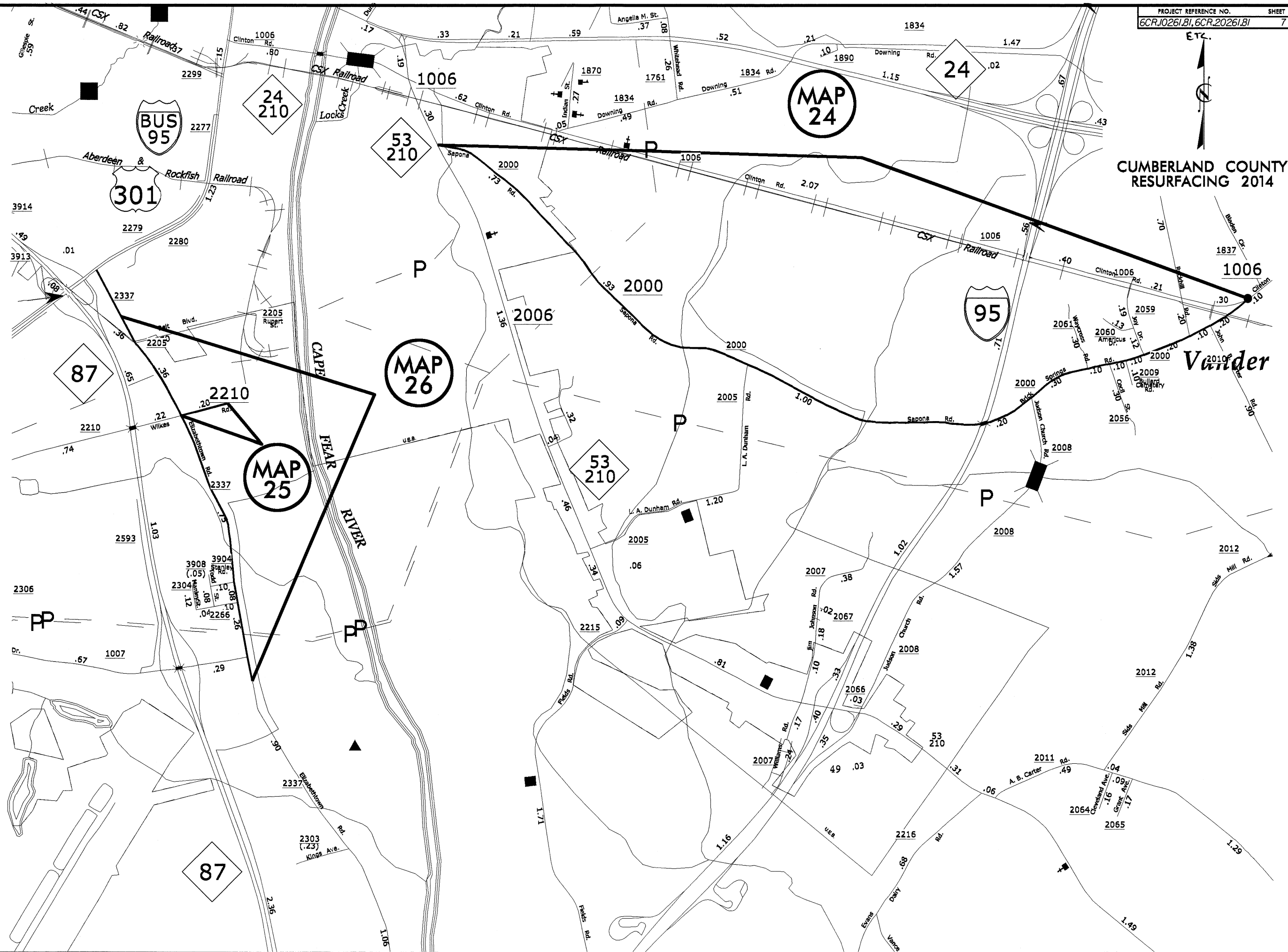
REVISIONS

8/17/99
 C:\APR-2014\0714\Projects\Resurfacing Projects\Division 6\Cumberland\HARNETT_Rev\Revised Files\Cumberland_HARNETT_RESURF MAPS.dgn
 11:58 AM 8/17/99



CUMBERLAND COUNTY RESURFACING 2014

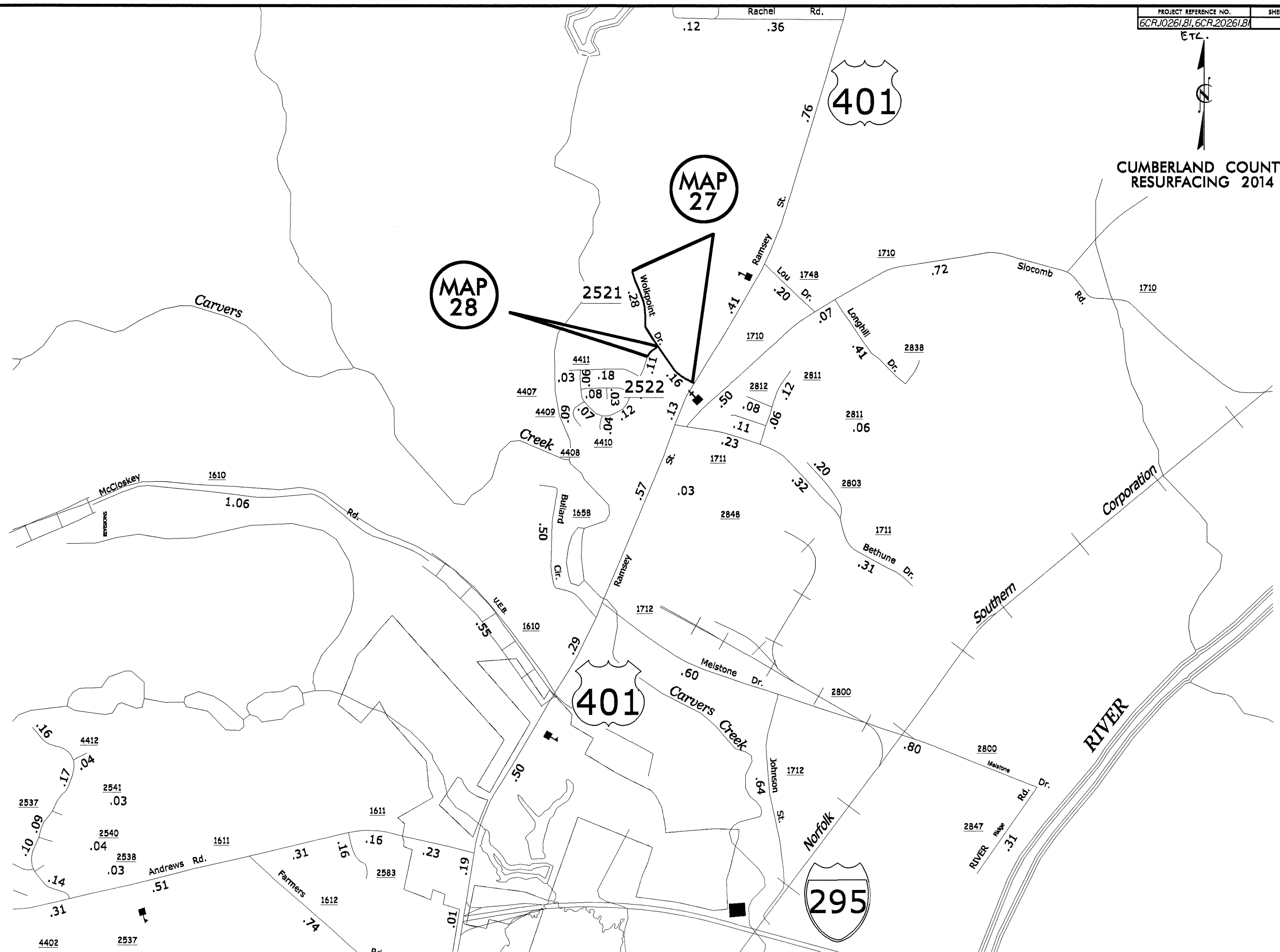
Vander



8/17/09
C:\APR-2014\0715\Projects\Resurfacing\Projects\Division 6\Cumberland_Harnett\Revised Files\CUMBERLAND_HARNETT_RESURF_MAPS.dgn
3:38:11 PM 4/15/14
3:38:11 PM 4/15/14



CUMBERLAND COUNTY
RESURFACING 2014



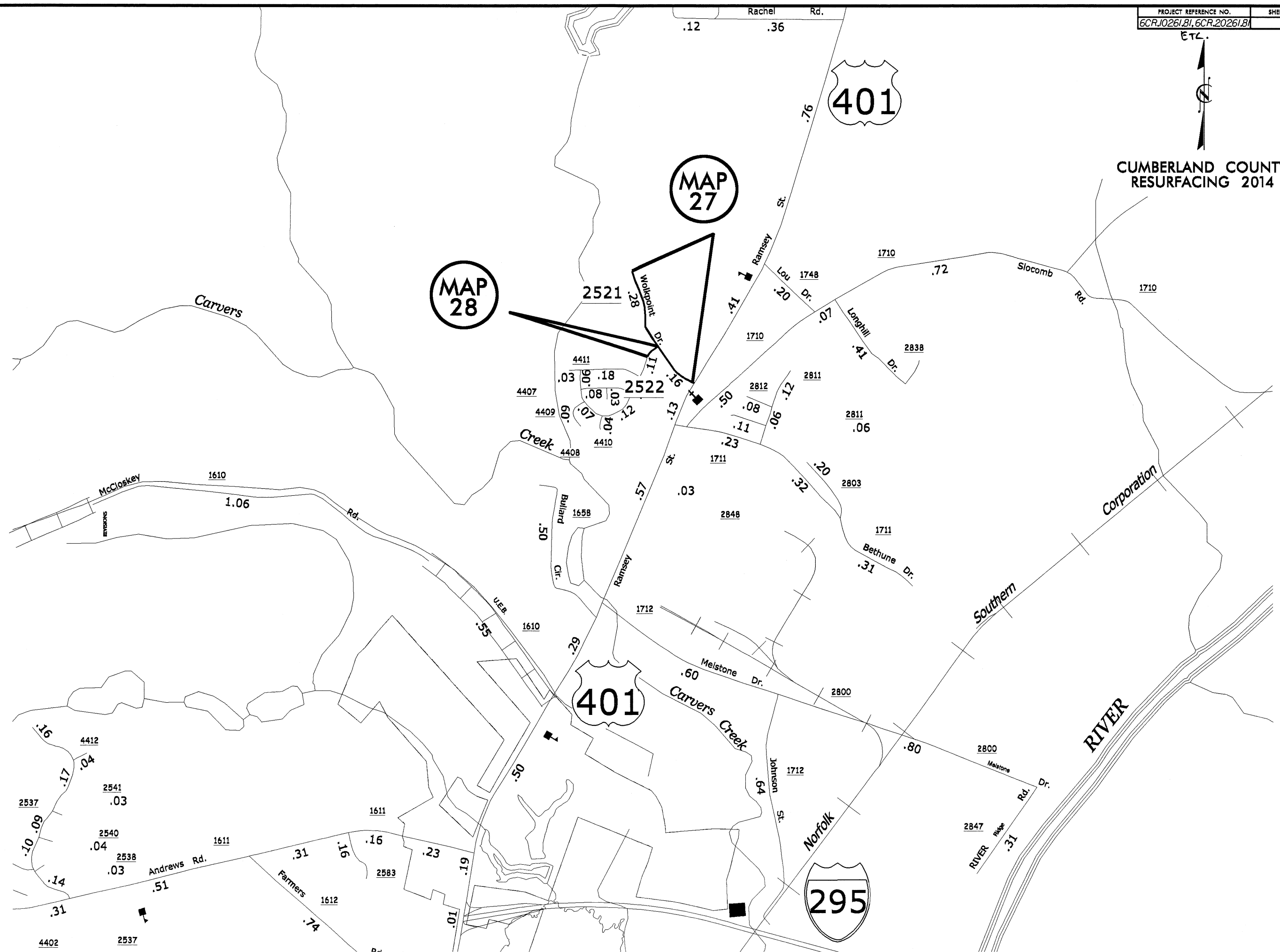
MAP 27

MAP 28

401

401

295

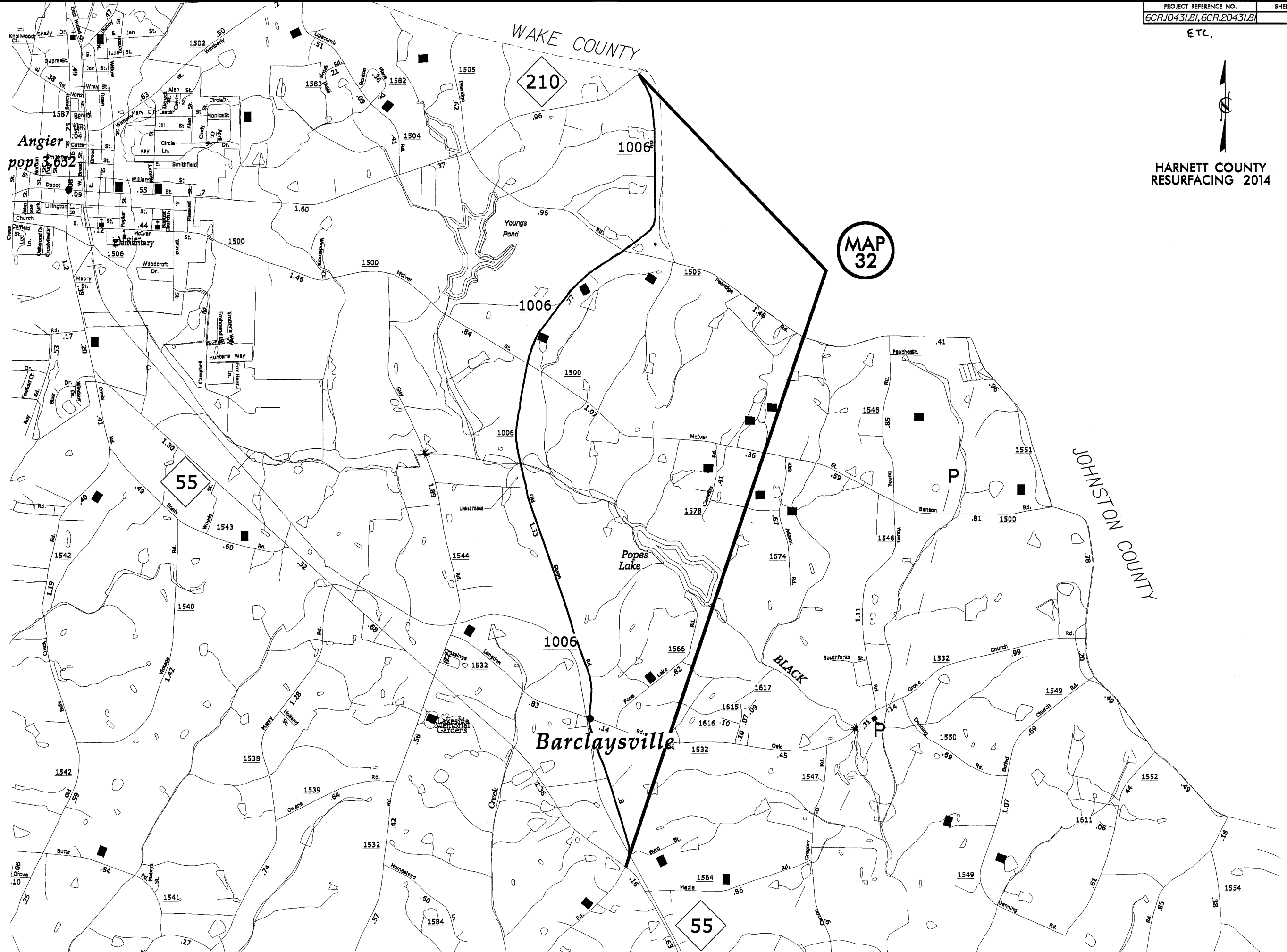


ETC.



**HARNETT COUNTY
RESURFACING 2014**

**MAP
32**

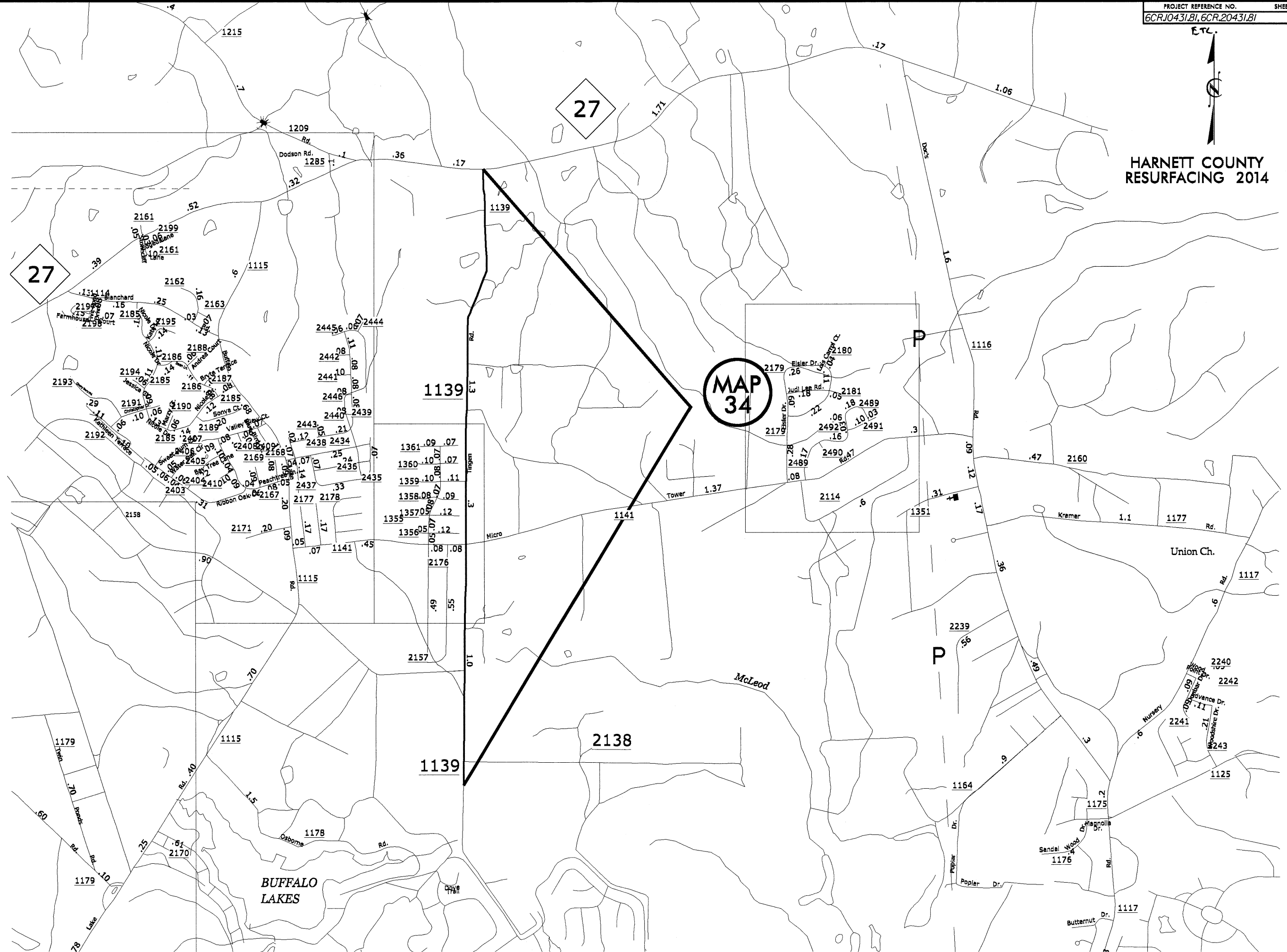


REVISIONS

23 APR 2014 07:18 C:\projects\Resurfacing Projects\Division 6\Cumberland\harnett\Revised Files\CUMBERLAND_HARNETT_RESURF MAPS.dgn
 6/17/09



HARNETT COUNTY RESURFACING 2014



**MAP
34**

8/17/99
23 APR 2014 07:16
C:\projects\Resurfacing Projects\Division 6\Cumberland\harnett\Revised Files\Cumberland\harnett\RESURF MAPS.dgn
\$\$\$\$
\$\$\$\$



HARNETT COUNTY RESURFACING 2014

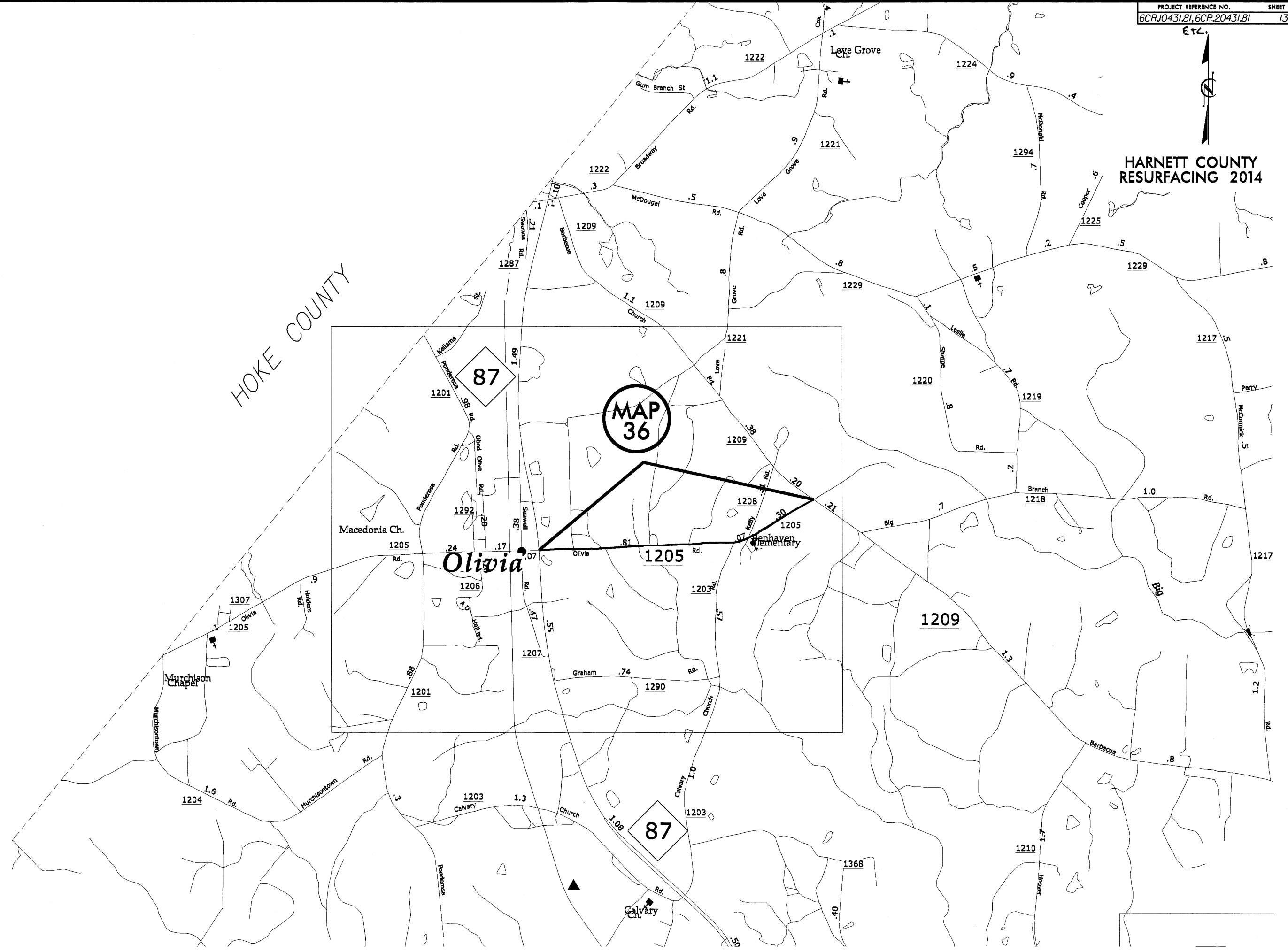
HOKE COUNTY

MAP
36

Olivia

87

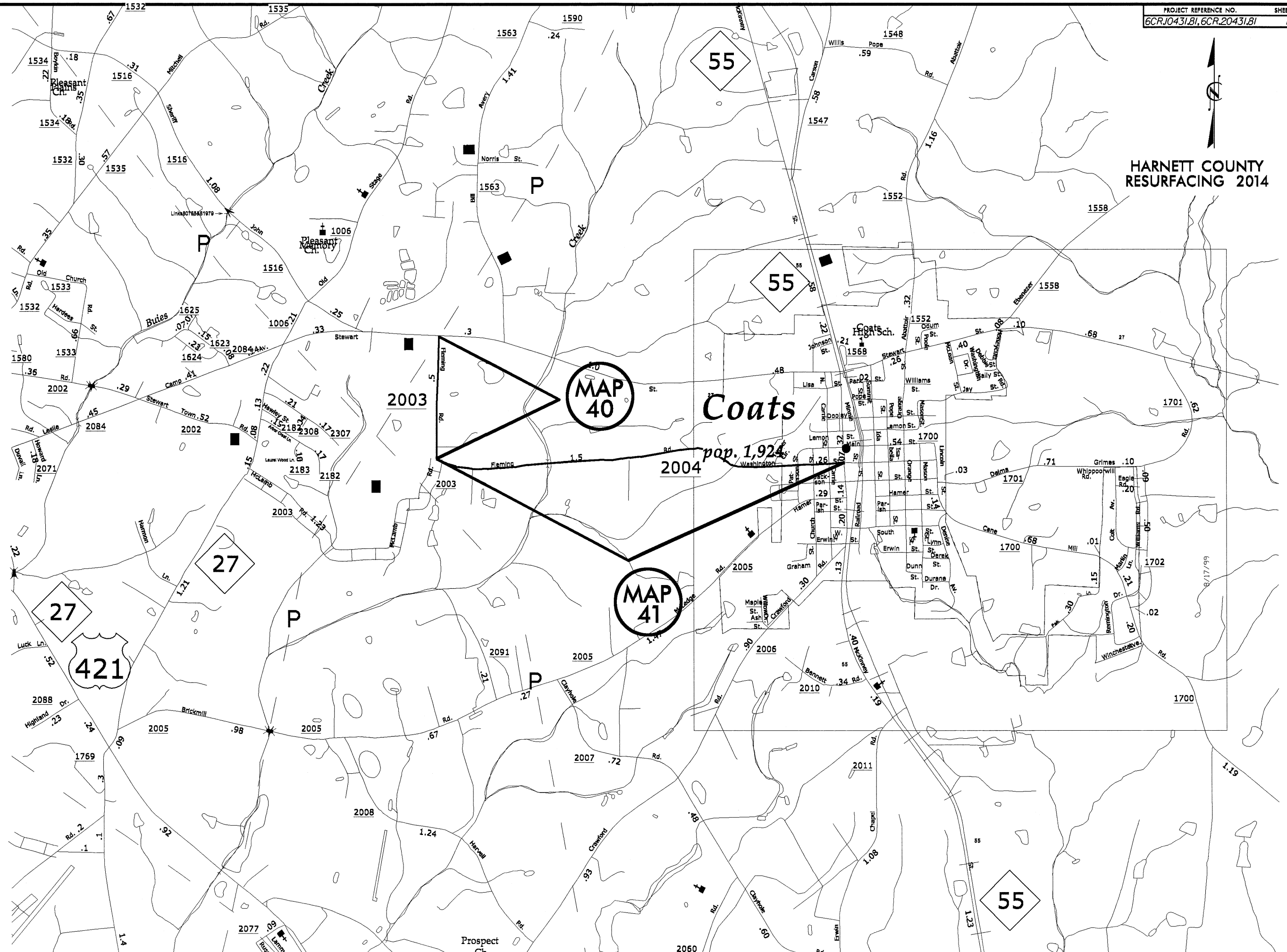
87



8/17/09
C:\APR-2014_0717\acts\Resurfacing Projects\Division 6\Cumberlandharnett\Revised Files\CUMBERLAND_HARNETT_RESURF MAPS.dgn
\$\$\$\$\$
\$\$\$\$\$



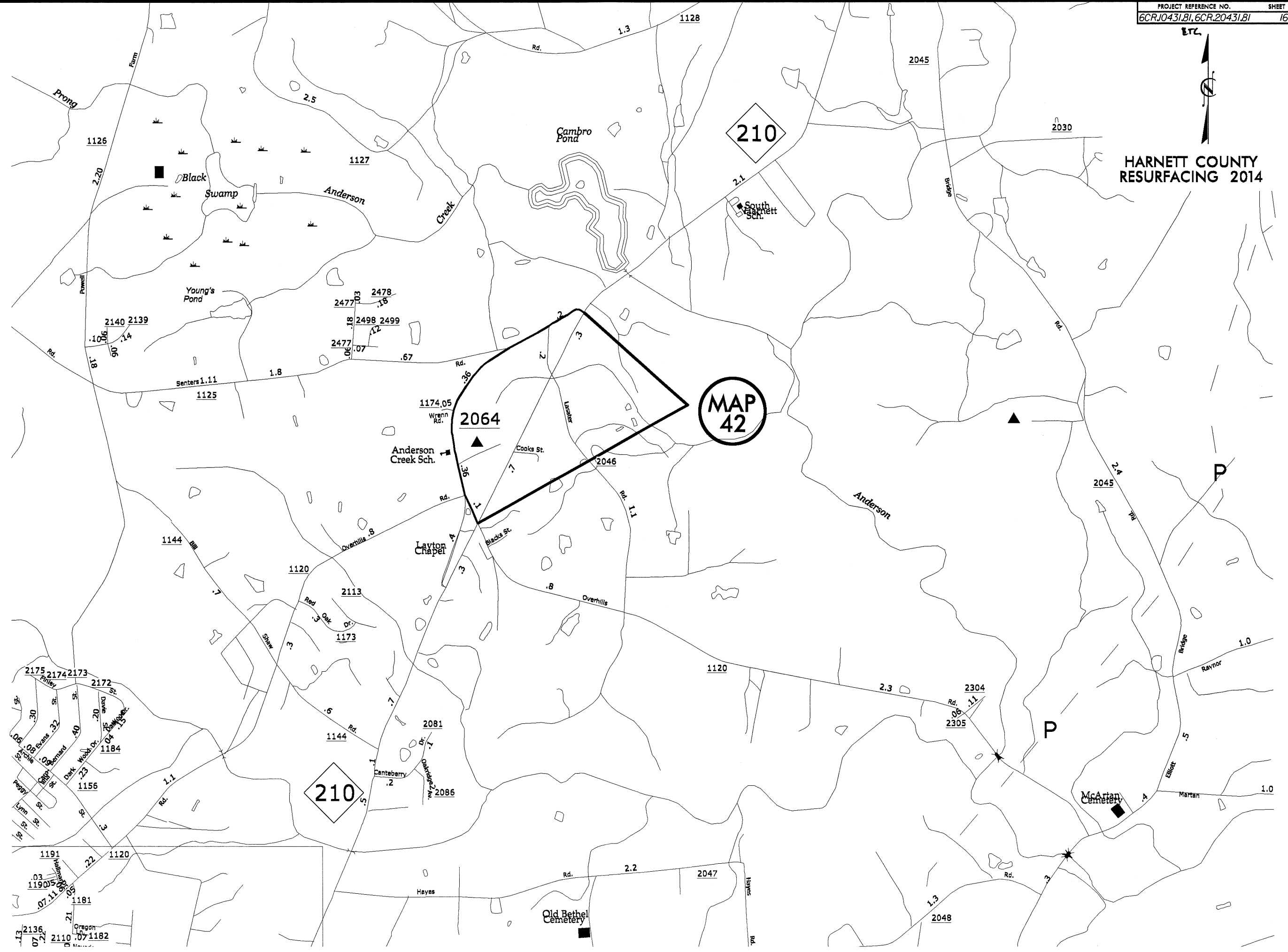
HARNETT COUNTY RESURFACING 2014



01-MAY-2014 10:10 C:\Users\landharnett\Projects\Division 6\Cumberland\Harnett\RESURF MAPS.dgn



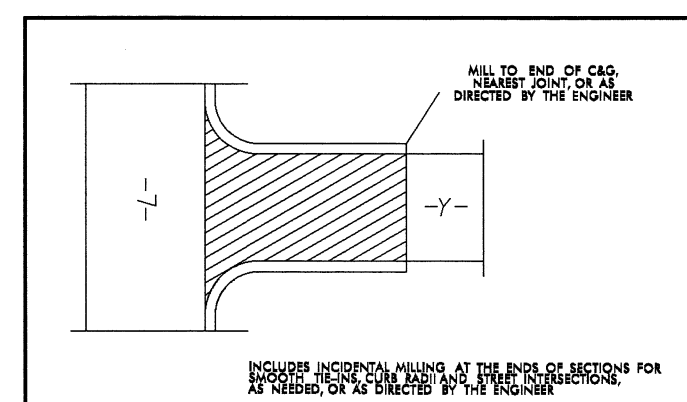
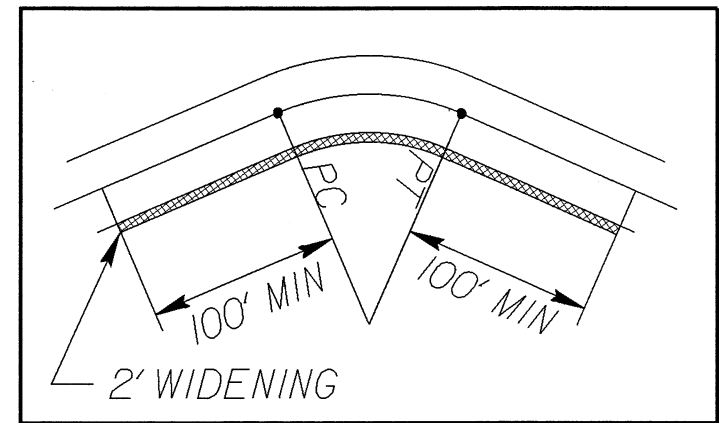
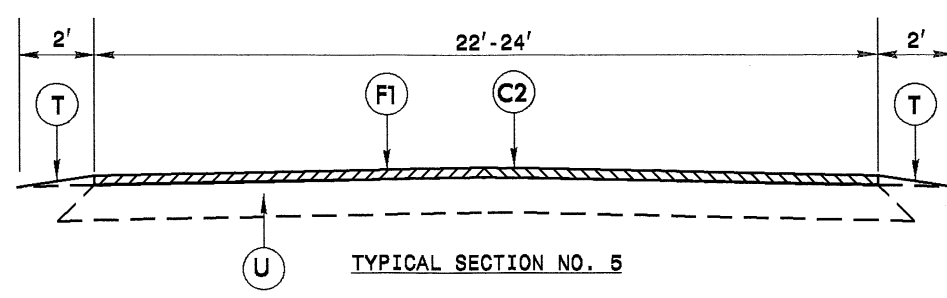
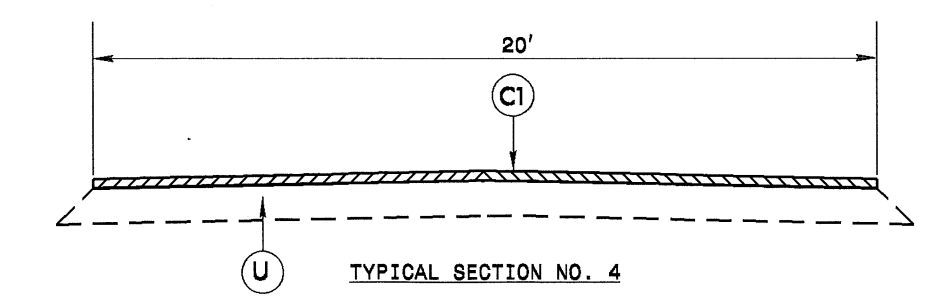
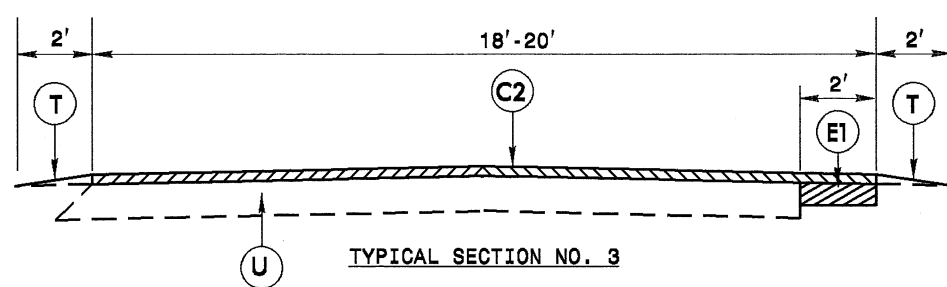
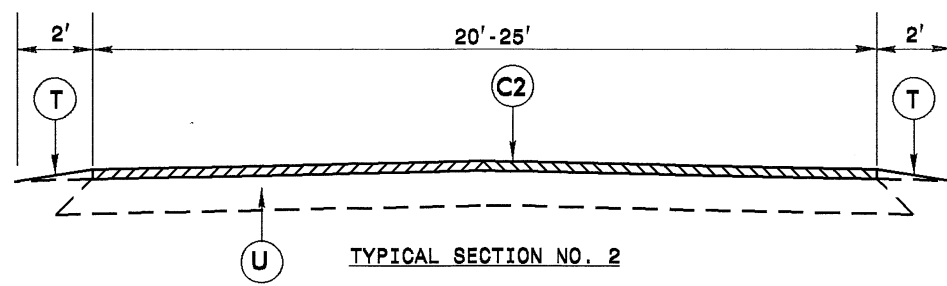
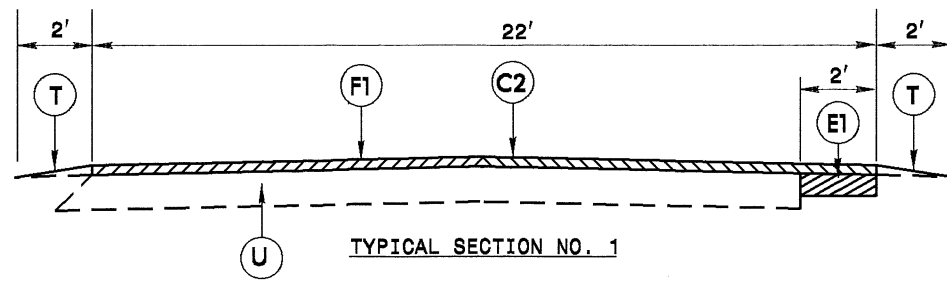
**HARNETT COUNTY
RESURFACING 2014**



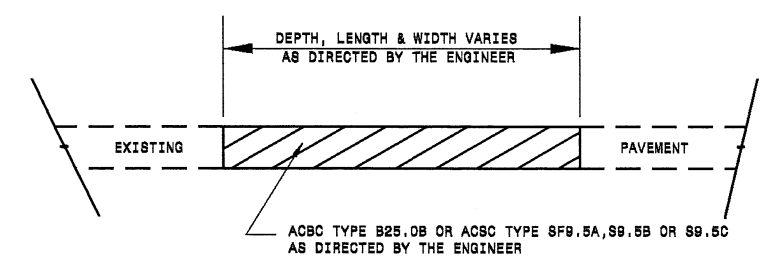
8/17/99

\\s:\projects\Resurfacing\Projects\Division 6\Cumberland\harnett\Revised Files\CUMBERLAND_HARNETT_RESURF MAPS.dgn
27 APR 2014 07:18
13:33:15

PAVEMENT SCHEDULE	
C1	1" ASPHALT CONCRETE SURFACE COURSE, TYPE S9A-1, AT AN AVERAGE RATE OF 100 LBS. PER SQ. YD.
C2	1½" ASPHALT CONCRETE SURFACE COURSE, TYPE SF9.5A, AT AN AVERAGE RATE OF 166 LBS. PER SQ. YD.
C3	1½" ASPHALT CONCRETE SURFACE COURSE, TYPE S9.5B, AT AN AVERAGE RATE OF 166 LBS. PER SQ. YD.
E1	5" ASPHALT CONCRETE BASE COURSE, TYPE B25.0B, AT AN AVERAGE RATE OF 570 LBS. PER SQ. YD.
F1	#8M MAT COAT
T	AGGREGATE SHOULDER BORROW
V1	0" - 1½" MILLING NEW ASPHALT TO BE PAVED BACK FLUSH
V2	1½" MILLING



MILLING AT CURB AND GUTTER INTERSECTIONS

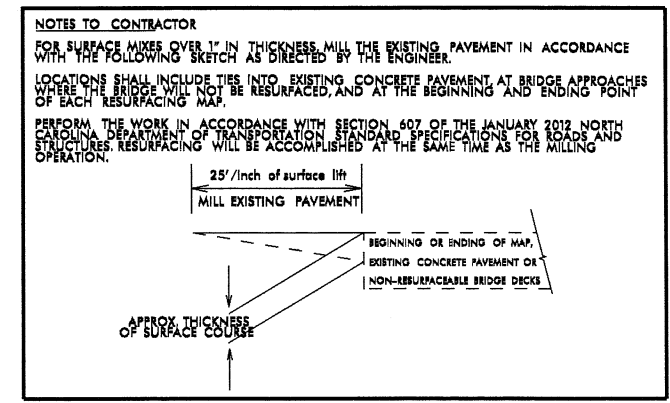


PATCHING EXISTING PAVEMENT
PATCHING TO BE PERFORMED PRIOR TO MILL AND FILL OPERATION

2012 ROADWAY ENGLISH STANDARD DRAWINGS

The following Roadway Standards as appear in "Roadway Standard Drawings" Highway Design Branch - N.C. Department of Transportation - Raleigh, N.C., Dated January, 2012 are applicable to this project and by reference hereto are considered a part of these plans.

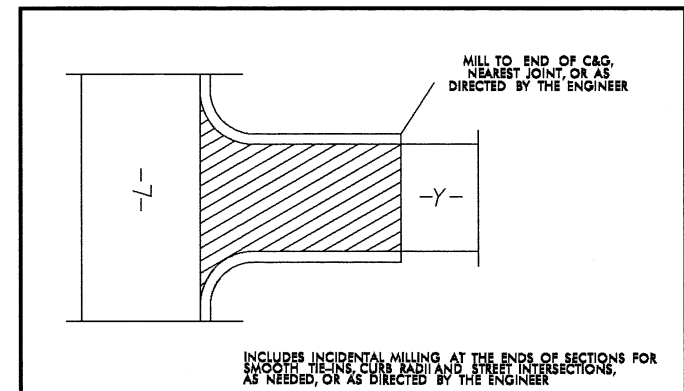
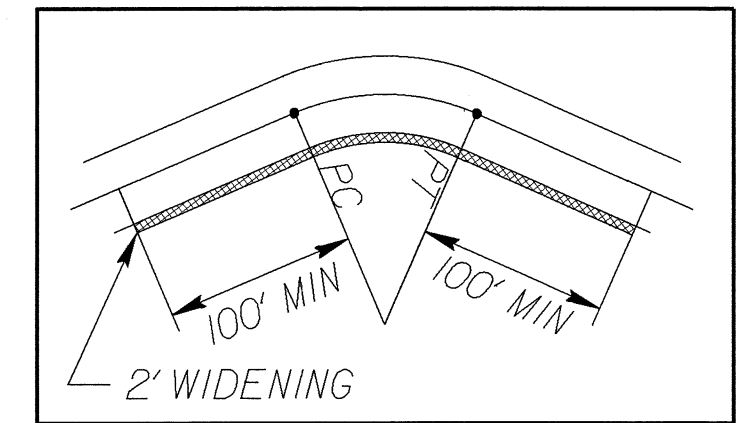
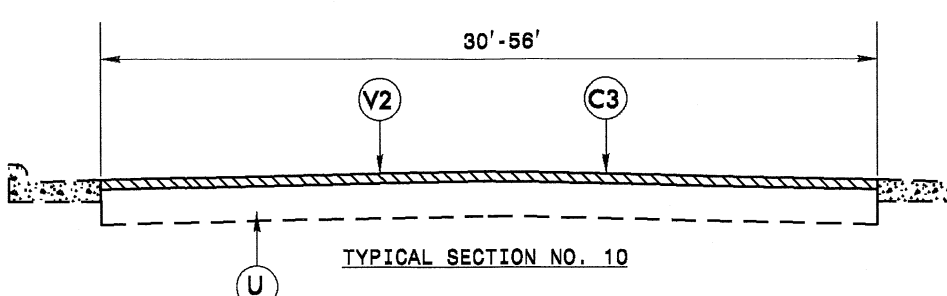
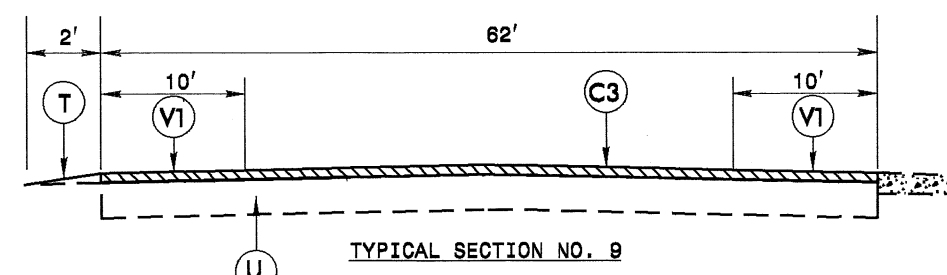
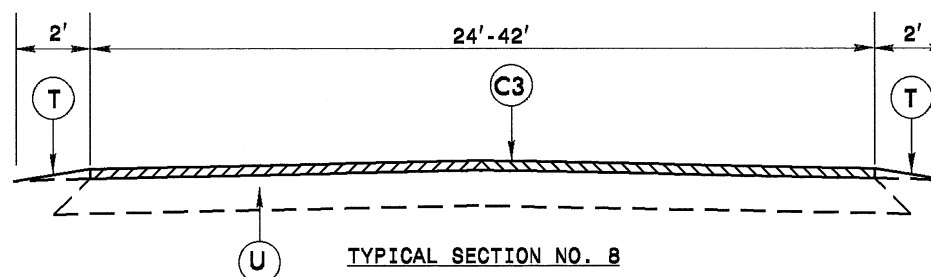
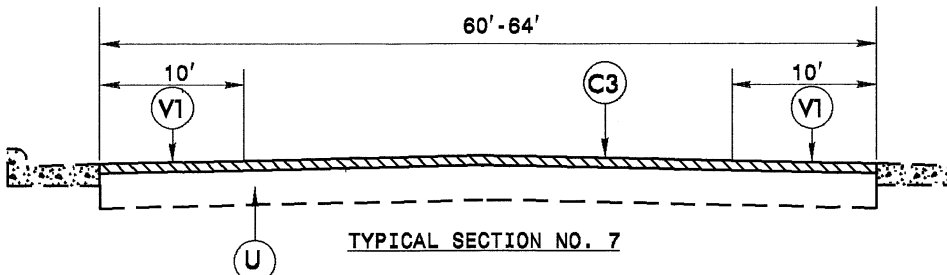
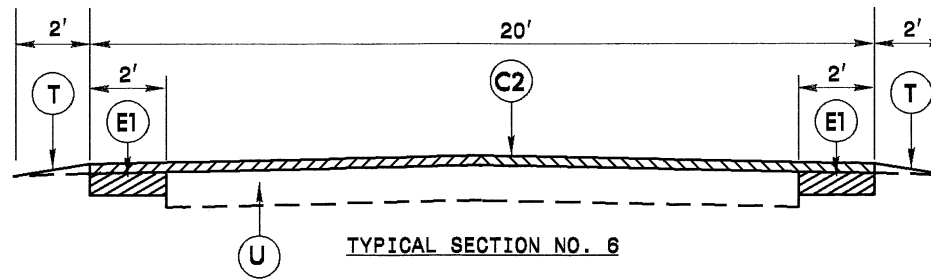
STD. NO. TITLE
DIVISION 8 - INCIDENTALS
848.05 Curb Ramp - Proposed Curb & Gutter



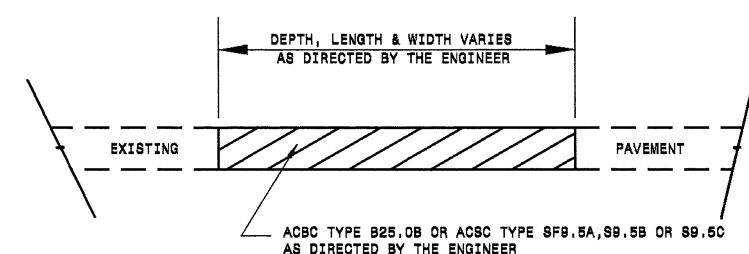
MILLING AT PAVEMENT TIE-INS DETAIL

23-APR-2014 08:39:24 C:\projects\Resurfacing\Projects\Division 6\Cumberland\harnett\Revised Files\CUMBERLAND_HARNETT.txd.dgn

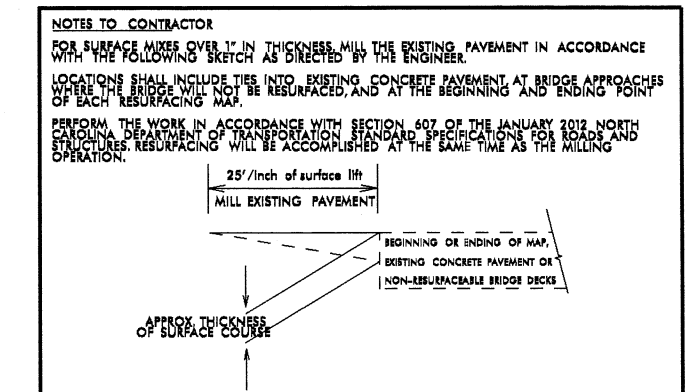
PAVEMENT SCHEDULE	
C1	1" ASPHALT CONCRETE SURFACE COURSE, TYPE 9A-1, AT AN AVERAGE RATE OF 100 LBS. PER SQ. YD.
C2	1½" ASPHALT CONCRETE SURFACE COURSE, TYPE 9F0.5A, AT AN AVERAGE RATE OF 165 LBS. PER SQ. YD.
C3	1½" ASPHALT CONCRETE SURFACE COURSE, TYPE 99.5B, AT AN AVERAGE RATE OF 168 LBS. PER SQ. YD.
E1	5" ASPHALT CONCRETE BASE COURSE, TYPE B25.0B, AT AN AVERAGE RATE OF 570 LBS. PER SQ. YD.
F1	#6M MAT COAT
T	AGGREGATE SHOULDER BORROW
V1	0" - 1½" MILLING NEW ASPHALT TO BE PAVED BACK FLUSH
V2	1½" MILLING



MILLING AT CURB AND GUTTER INTERSECTIONS



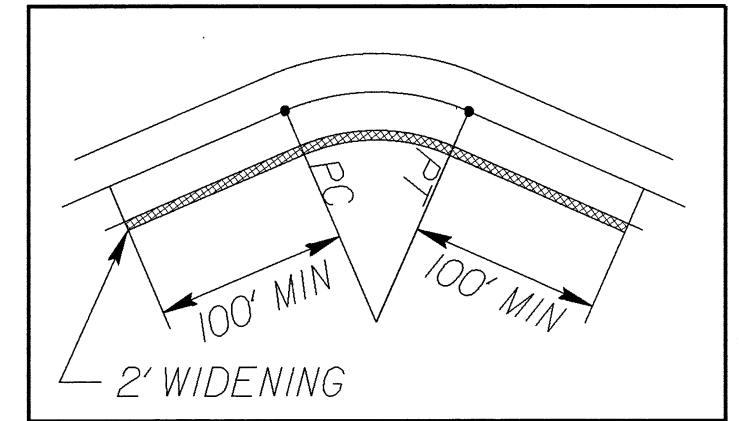
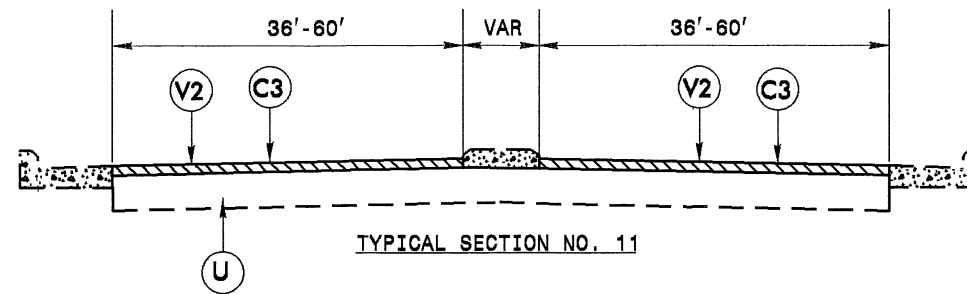
PATCHING EXISTING PAVEMENT
PATCHING TO BE PERFORMED PRIOR TO MILL AND FILL OPERATION



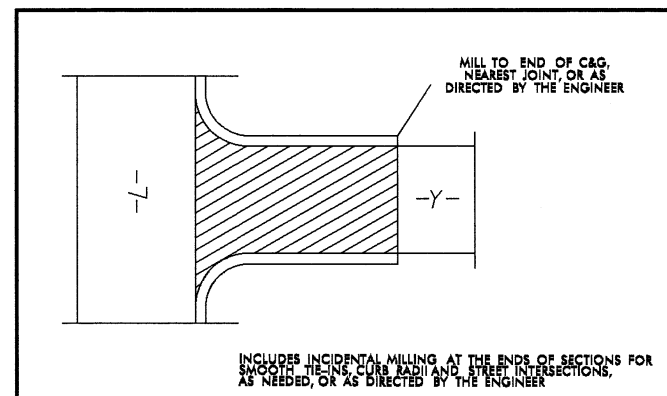
MILLING AT PAVEMENT TIE-INS DETAIL

27-APR-2014 08:40 Projects\Resurfacing Projects\Division 6\Cumberland\harnett\Revised Files\CUMBERLAND_HARNETT.txd
 27-APR-2014 08:40 Projects\Resurfacing Projects\Division 6\Cumberland\harnett\Revised Files\CUMBERLAND_HARNETT.txd
 27-APR-2014 08:40 Projects\Resurfacing Projects\Division 6\Cumberland\harnett\Revised Files\CUMBERLAND_HARNETT.txd

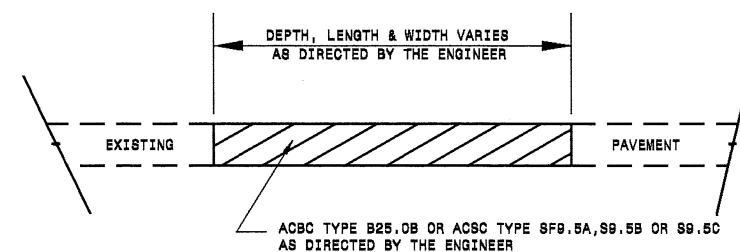
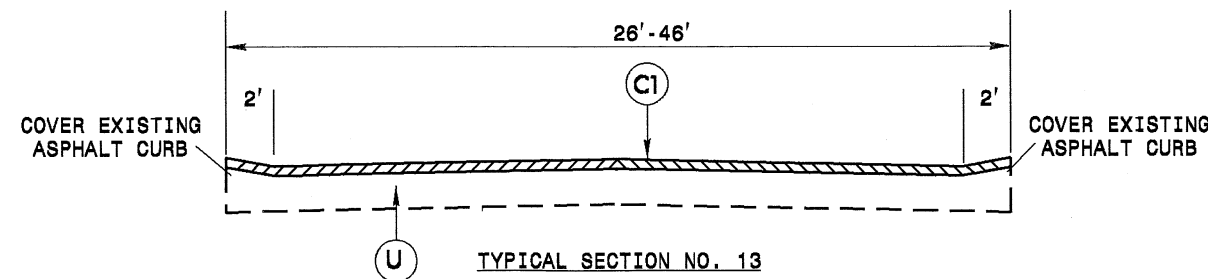
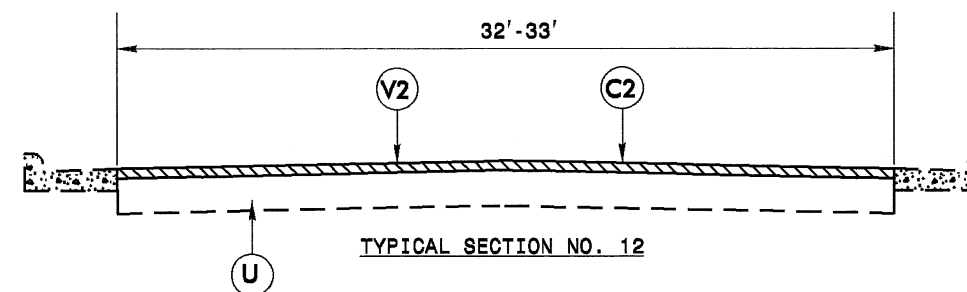
PAVEMENT SCHEDULE	
C1	1" ASPHALT CONCRETE SURFACE COURSE, TYPE SA-1, AT AN AVERAGE RATE OF 100 LBS. PER SQ. YD.
C2	1½" ASPHALT CONCRETE SURFACE COURSE, TYPE SF9.5A, AT AN AVERAGE RATE OF 185 LBS. PER SQ. YD.
C3	1½" ASPHALT CONCRETE SURFACE COURSE, TYPE S9.5B, AT AN AVERAGE RATE OF 188 LBS. PER SQ. YD.
E1	5" ASPHALT CONCRETE BASE COURSE, TYPE B25.0B, AT AN AVERAGE RATE OF 570 LBS. PER SQ. YD.
F1	#6M MAT CDAT
T	AGGREGATE SHOULDER BORROW
V1	0" - 1½" MILLING NEW ASPHALT TO BE PAVED BACK FLUSH
V2	1½" MILLING



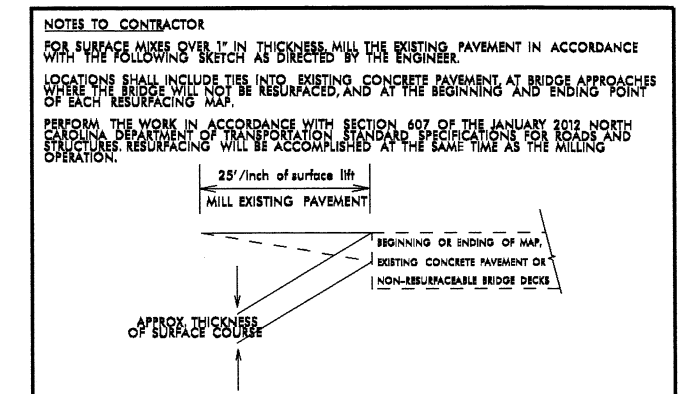
INSIDE CURVE WIDENING
MAPS 21, 22, 23, 32, 37, 41 & 42
TYPICALS 1, 3 AND 6



MILLING AT CURB AND GUTTER INTERSECTIONS



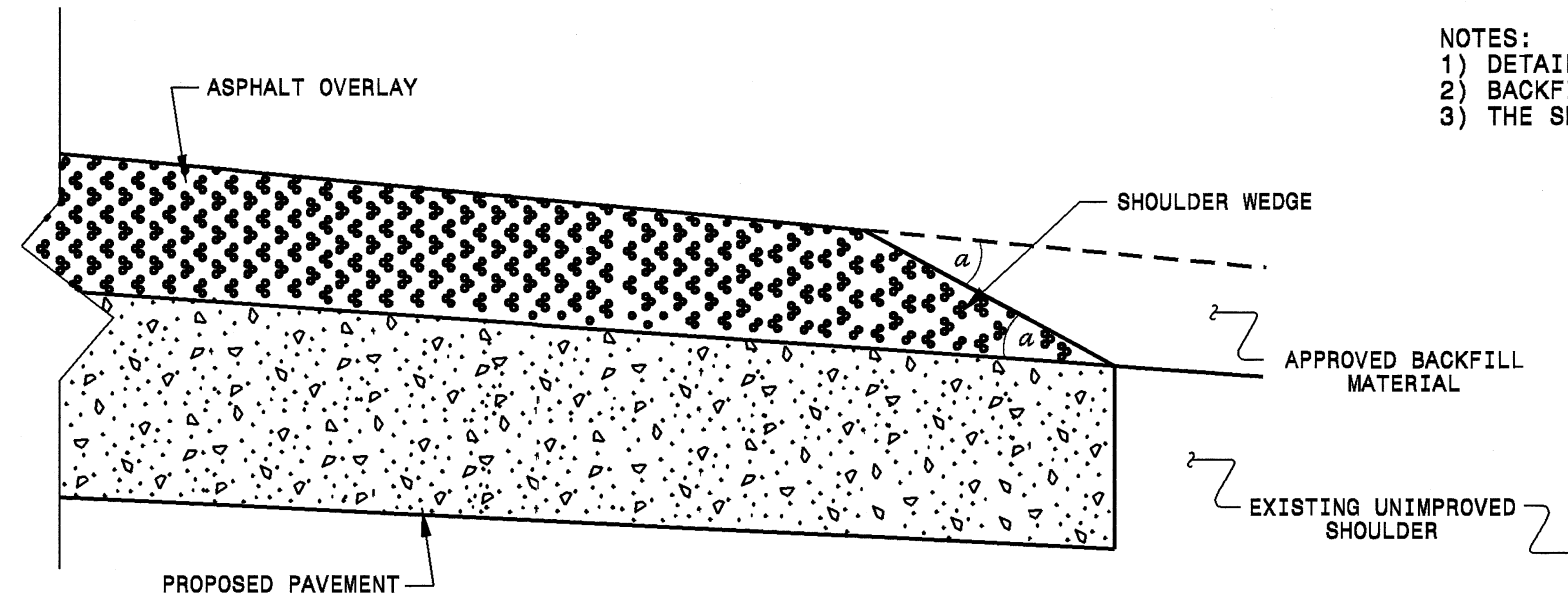
PATCHING EXISTING PAVEMENT
PATCHING TO BE PERFORMED PRIOR TO MILL AND FILL OPERATION



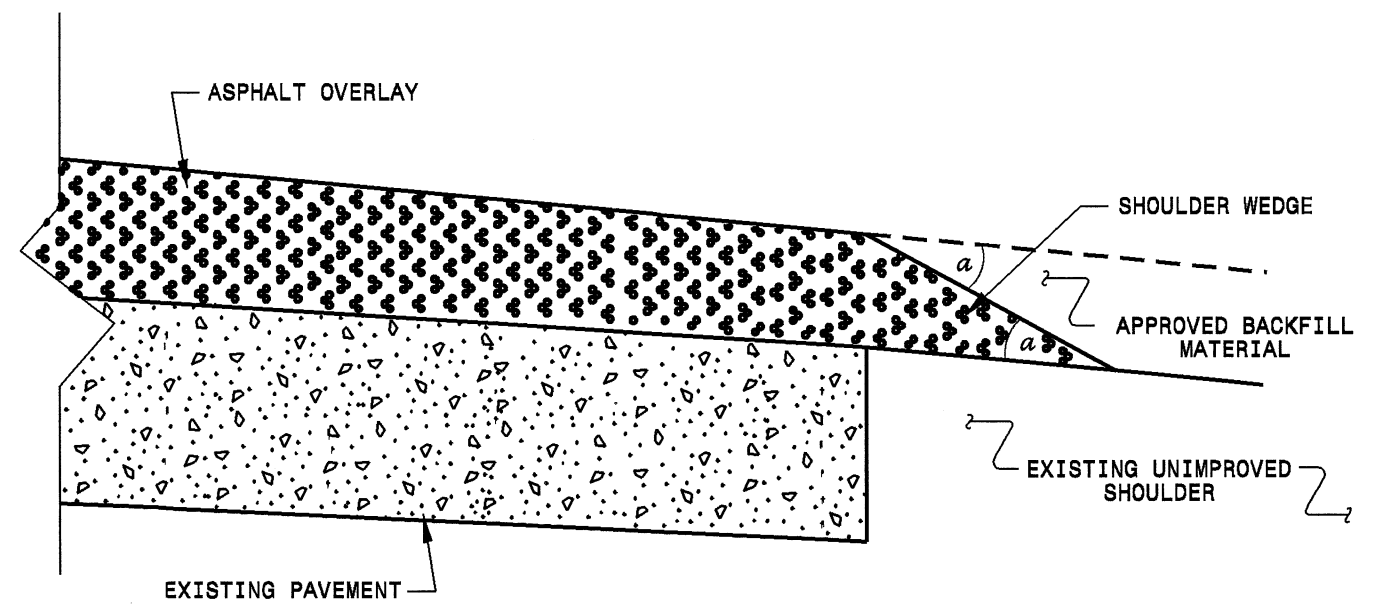
MILLING AT PAVEMENT TIE-INS DETAIL

27-APR-2014 08:40
 R:\Projects\Resurfacing\Projects\Division 6\Cumber\landharnett\Revised Files\CUMBERLAND_HARNETT.txdp.dgn
 R:\Projects\Resurfacing\Projects\Division 6\Cumber\landharnett\Revised Files\CUMBERLAND_HARNETT.txdp.dgn

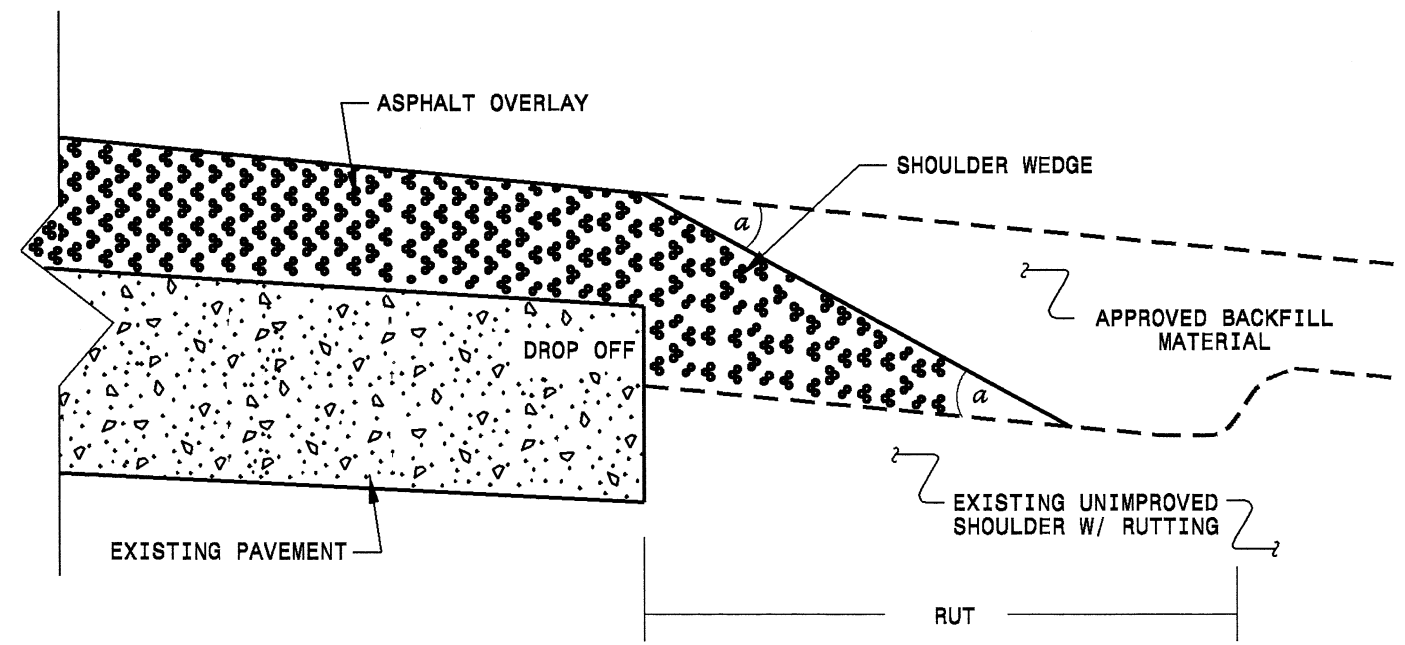
- NOTES:
 1) DETAIL DOES NOT APPLY TO OGAFC AND ULTRA-THIN BONDED WEARING COURSE.
 2) BACKFILL SHOULDER WITH APPROVED MATERIAL.
 3) THE SHOULDER WEDGE DEVICE MAY BE DISENGAGED AT PAVED DRIVEWAYS AND SIDE STREETS.



SHOULDER WEDGE DETAIL
 (Resurfacing Projects w/ Widening or
 with Existing Paved Shoulder having no dropoffs)



SHOULDER WEDGE DETAIL
 (Resurfacing Projects w/ NO Widening)



SHOULDER WEDGE DETAIL
 (Resurfacing Adjacent to
 Rutted Shoulder)

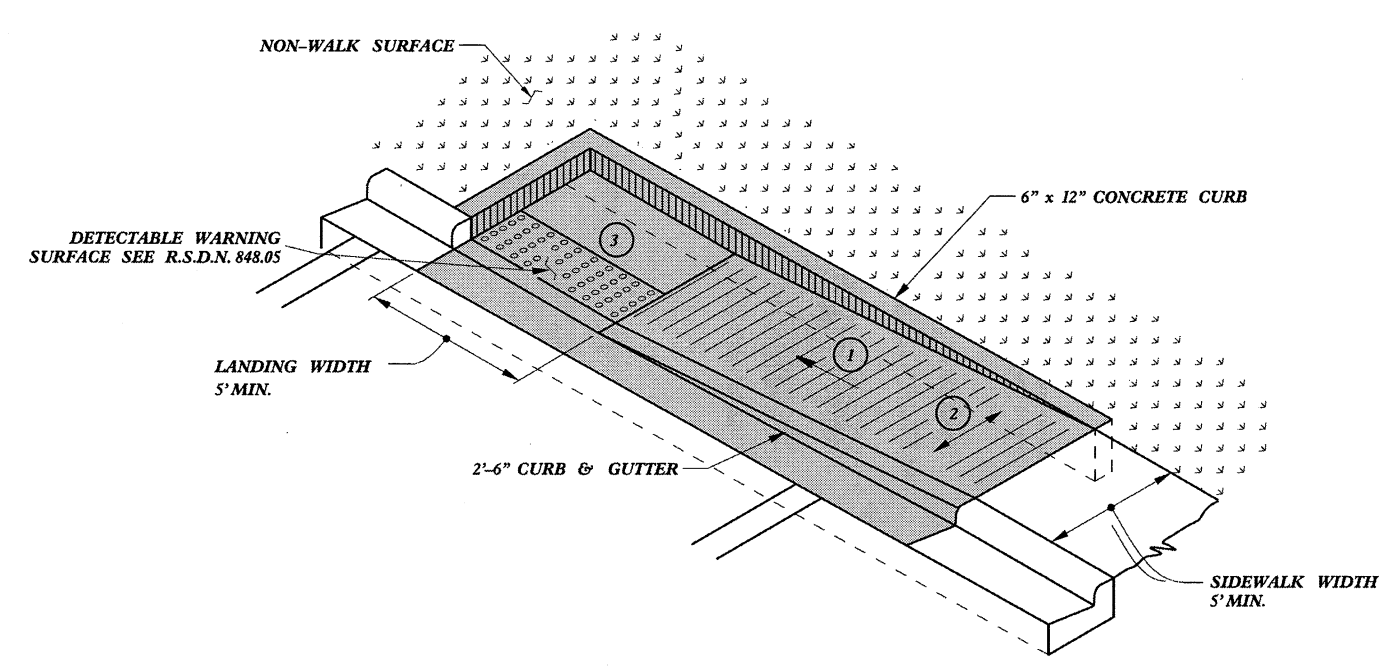
- SHOULDER WEDGE ANGLE = 30°

CONTRACT STANDARDS AND DEVELOPMENT UNIT	
Office 919-707-8950 FAX 919-250-4119	
SHOULDER WEDGE DETAILS	
ORIGINAL BY: T. SPELL	DATE: 7-19-11
MODIFIED BY:	DATE: 10/16/12
CHECKED BY:	DATE:
FILE SPEC.: s:\usr\details\stand\shoulderwedgedetail.dgn	

23-APR-2014 07:28
 S:\Contractors\Resurfacing Projects\Revised Shoulder Wedge Detail.dgn
 \$\$\$USERNAME\$\$\$

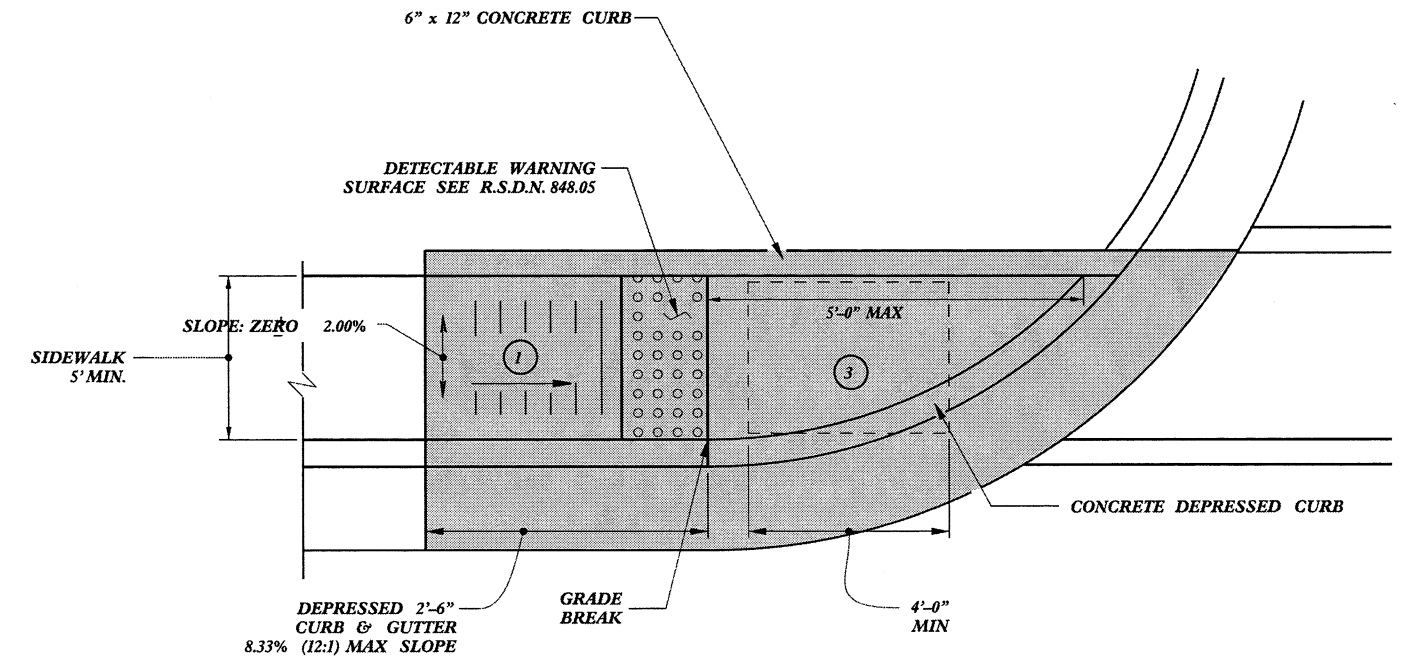
5/14/99

22-MAR-2012 15:05 S:\Contracts\Center9593\Special Details\Howerton\Standard Drawings\2012 Curb Ramp Special Details\Curb Ramp Details.dgn J.Howerton AT C50237981



TYPE 1A

PAY LIMITS FOR CURB RAMP

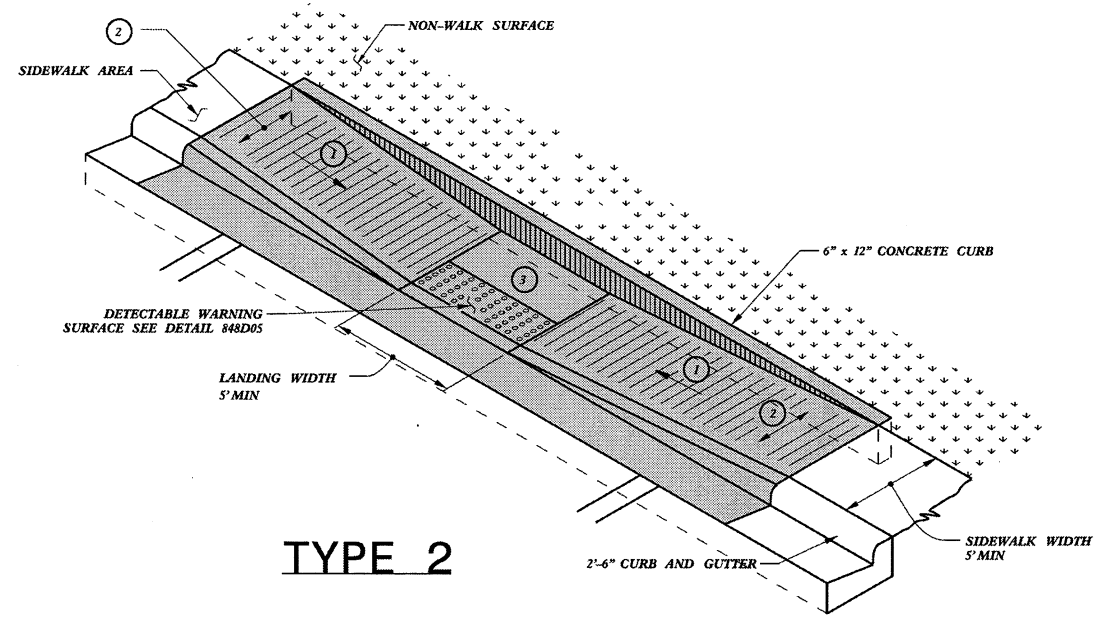


TYPE 1

- ① 8.33% (12:1) MAX RAMP SLOPE
- ② CROSS SLOPE: 2.00%
- ③ CURB RAMPS REQUIRE A (4'-0") MINIMUM LANDING WITH A MAXIMUM CROSS SLOPE AND LONGITUDINAL SLOPE OF 2.00% WHERE PEDESTRIANS PERFORM TURNING MANEUVERS. SLOPE TO DRAIN TO CURB.

REFER TO ROADWAY STANDARD DRAWING NUMBER 848.05 SHEET 3 OF 3 FOR ALL RAMP NOTES

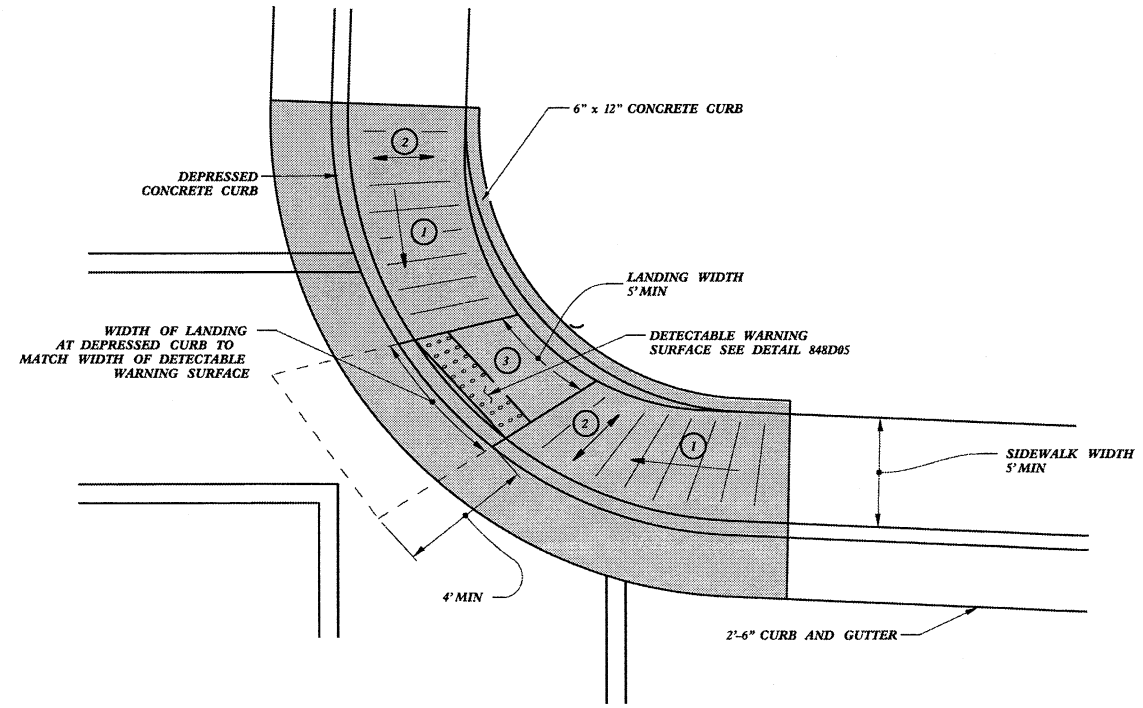
CONTRACT STANDARDS AND DEVELOPMENT UNIT	
Office 919-707-6950 FAX 919-250-4119	
CURB RAMPS	
Directional Ramps	
ORIGINAL BY: J.S. HOWERTON	DATE: 7/7/11
MODIFIED BY: _____	DATE: _____
CHECKED BY: _____	DATE: _____
FILE SPEC: stds/2012CurbRamp/CurbRampDetails.dwg	



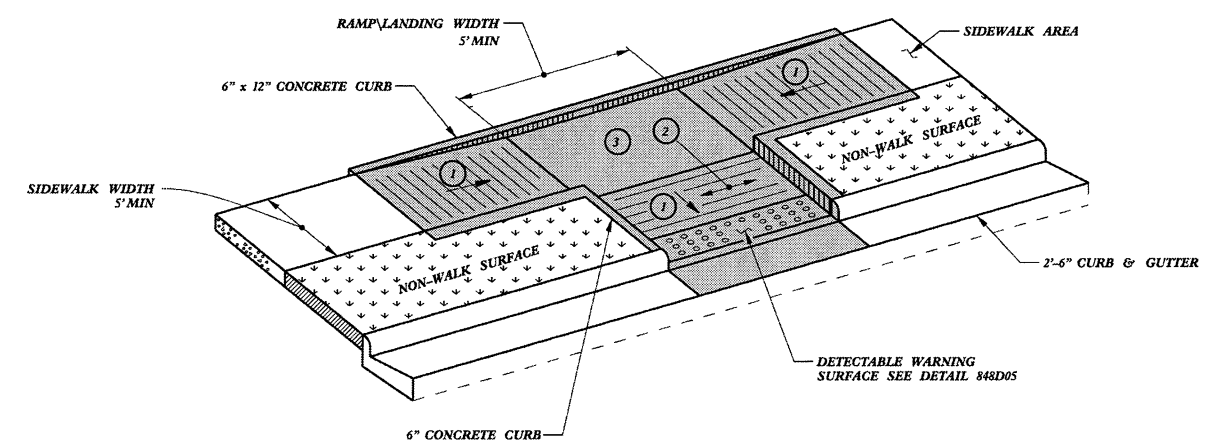
TYPE 2

PAY LIMITS FOR CURB RAMP

- ① 8.33% (12:1) MAX RAMP SLOPE
- ② CROSS SLOPE: 2.00%
- ③ CURB RAMPS REQUIRE A (4'-0") MINIMUM LANDING WITH A MAXIMUM CROSS SLOPE AND LONGITUDINAL SLOPE OF 2.00% WHERE PEDESTRIANS PERFORM TURNING MANEUVERS. SLOPE TO DRAIN TO CURB.



TYPE 2A

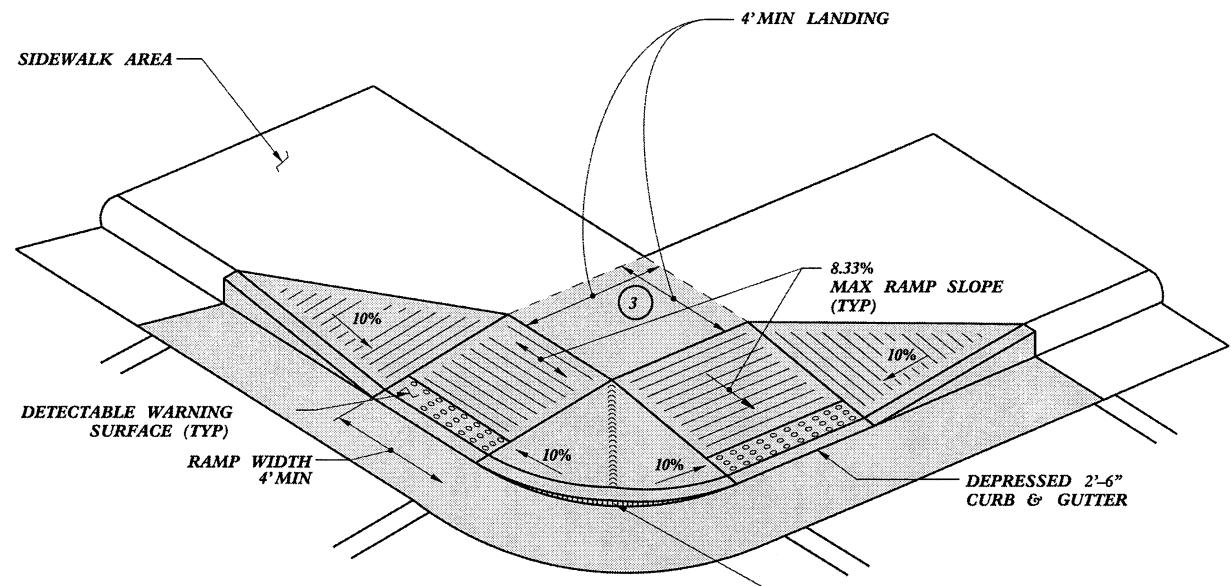


TYPE 3

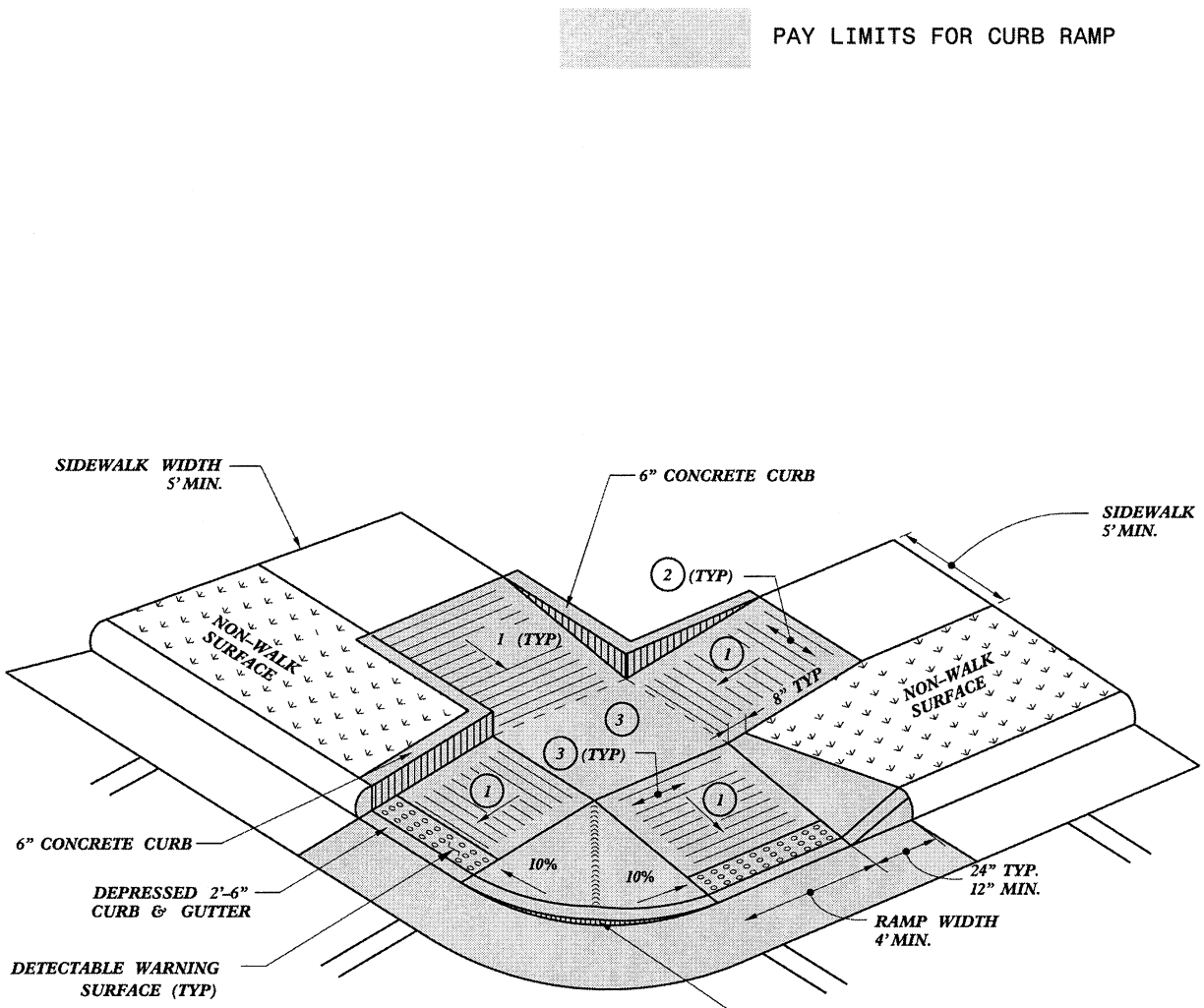
REFER TO ROADWAY STANDARD DRAWING NUMBER 848.05 SHEET 3 OF 3 FOR ALL RAMP NOTES

CONTRACT STANDARDS AND DEVELOPMENT UNIT	
Office 919-707-6950 FAX 919-250-4119	
CURB RAMPS	
Parallel Ramps	
ORIGINAL BY: J.S. HOWERTON	DATE: 7/7/11
MODIFIED BY: _____	DATE: _____
CHECKED BY: _____	DATE: _____
FILE SPEC: stds/2012CurbRamp/CurbRampDetails.dwg	

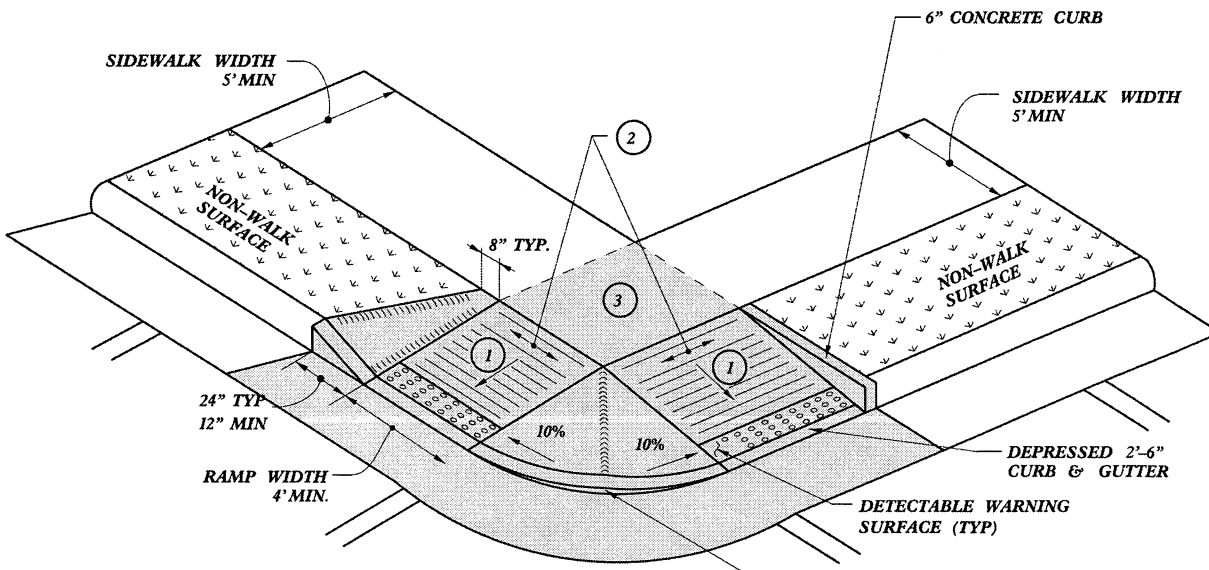
5/14/99
22-MAR-2012 15:07
S:\Contracts\Center\9559\Special Details\Howerton\Standard Drawings\2012 Curb Ramp Special Details\Curb Ramp Details.dgn
Power Gen AT C5023738



TYPE 4



TYPE 5



TYPE 4A

- 1 8.33% (12:1) MAX RAMP SLOPE
- 2 CROSS SLOPE: 2.00%
- 3 CURB RAMPS REQUIRE A (4'-0") MINIMUM LANDING WITH A MAXIMUM CROSS SLOPE AND LONGITUDINAL SLOPE OF 2.00% WHERE PEDESTRIANS PERFORM TURNING MANEUVERS. SLOPE TO DRAIN TO CURB.

PAY LIMITS FOR CURB RAMP

5/14/99
 22-MAR-2012 15:08
 J:\Contracts\Center\9559\Special Details\Howerton\Standard Drawings\2012 Standard Drawings\2012 Curb Ramp Special Details\Curb Ramp Details.dgn
 J.Howerton AT: C5023738

REFER TO ROADWAY STANDARD DRAWING NUMBER 848.05 SHEET 3 OF 3 FOR ALL RAMP NOTES

CONTRACT STANDARDS AND DEVELOPMENT UNIT	
Office 919-707-6950 FAX 919-250-4119	
CURB RAMPS	
Shared Landing	
ORIGINAL BY: J.S. HOWERTON	DATE: 7/7/11
MODIFIED BY:	DATE:
CHECKED BY:	DATE:
FILE SPEC: stds/2012CurbRamp/CurbRampDetails.dwg	

