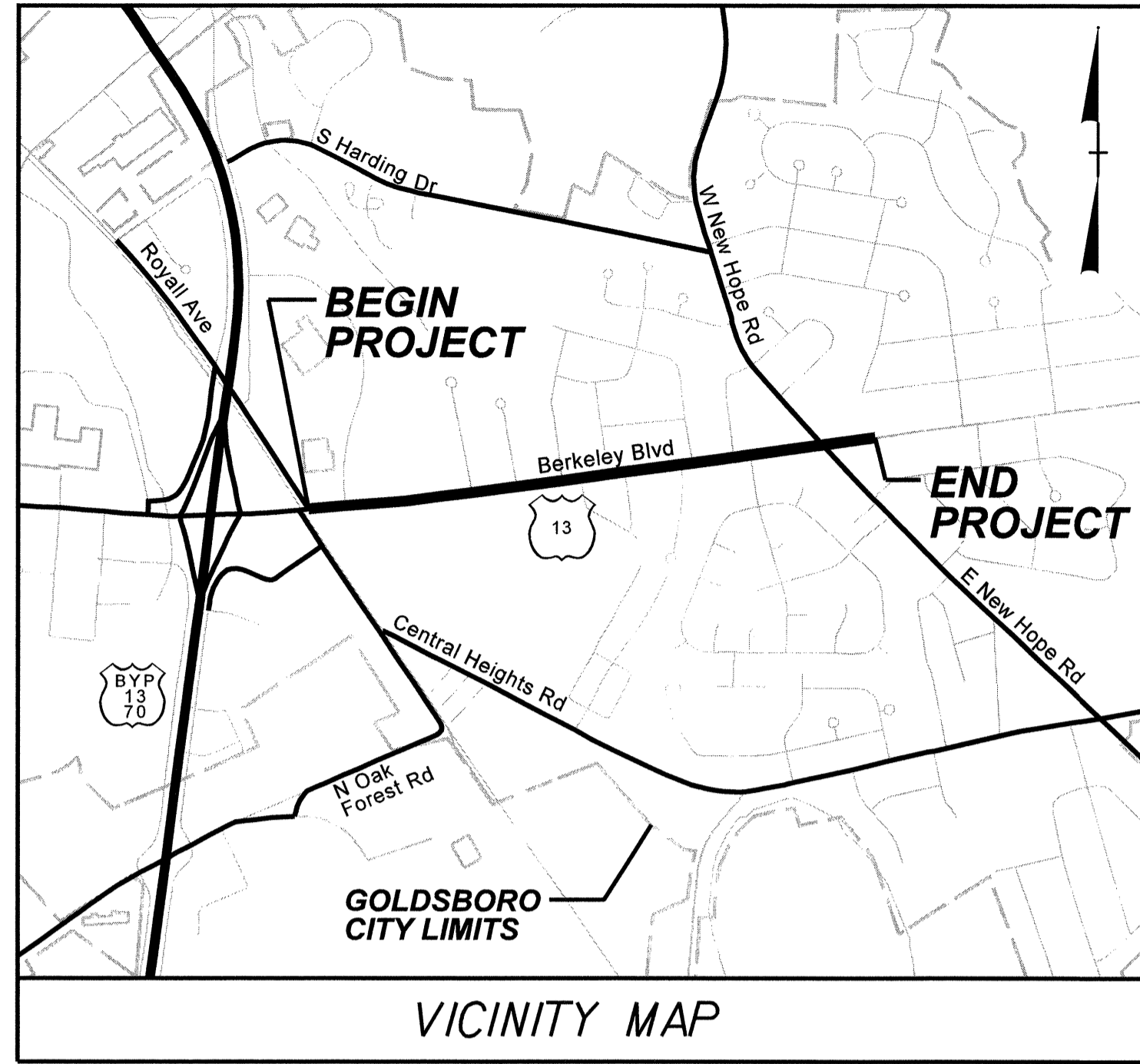


5/2/2013 K:\PAL_Roadway\01746003 (Berkeley Blvd)\Plan\Water\Sewer\01746003_Luc01-Adgn

TIP PROJECT: U-3609A

CONTRACT: C202603

T.I.P. NO.	SHEET NO.
U-3609A	UC-1

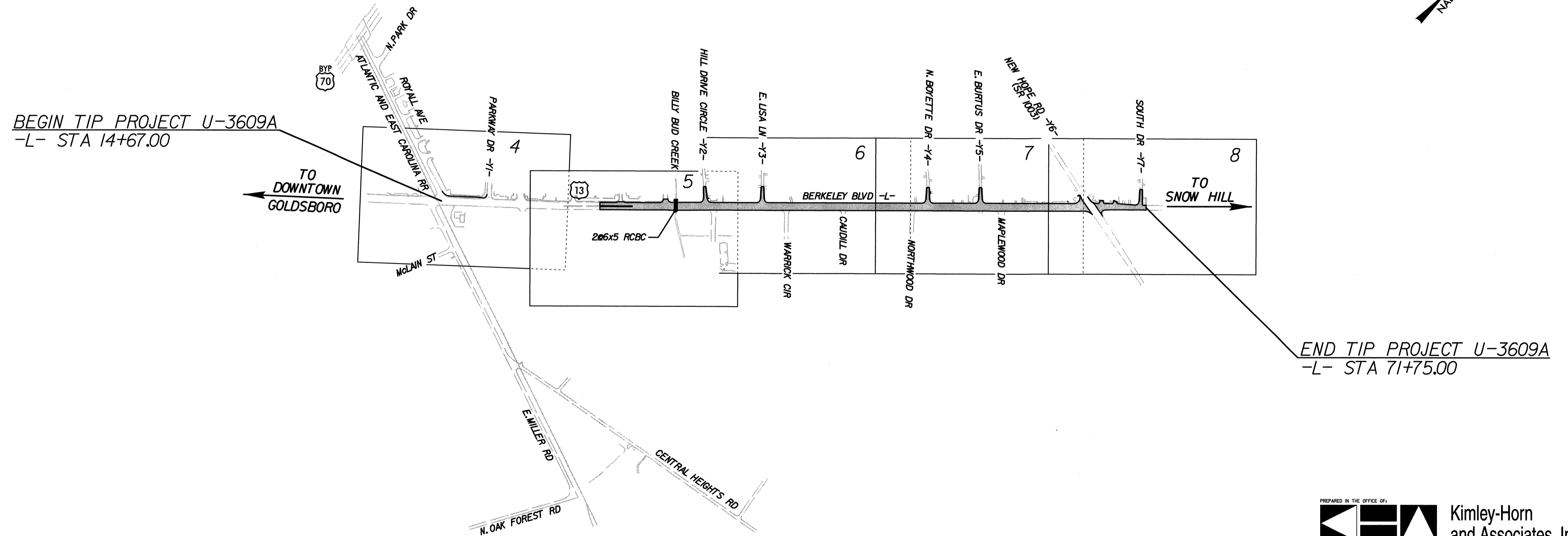
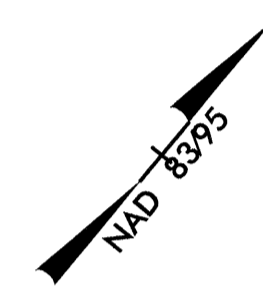
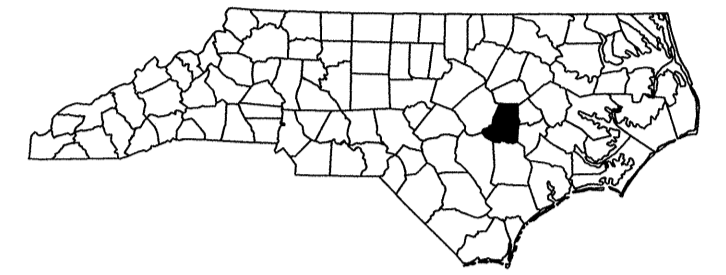


STATE OF NORTH CAROLINA
DIVISION OF HIGHWAYS

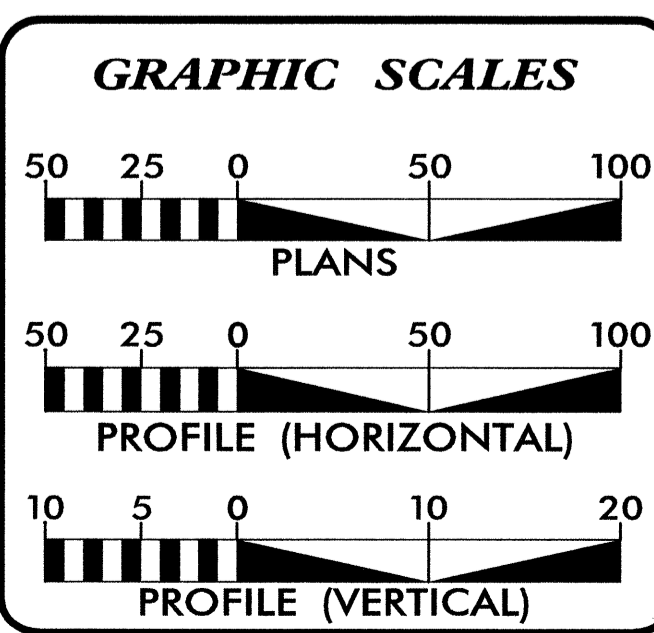
**UTILITY CONSTRUCTION PLANS
WAYNE COUNTY**

**LOCATION: US 13 (BERKELEY BOULEVARD) FROM ROYALL AVENUE
TO SOUTH DRIVE**

TYPE OF WORK: GRADING, DRAINAGE, PAVING AND CULVERT



PREPARED IN THE OFFICE OF:
Kimley-Horn and Associates, Inc.
P.O. BOX 33068 - RALEIGH, NORTH CAROLINA 27636-3068
PHONE: (919) 677-2000 FAX: (919) 677-2050 PE NO. F-102

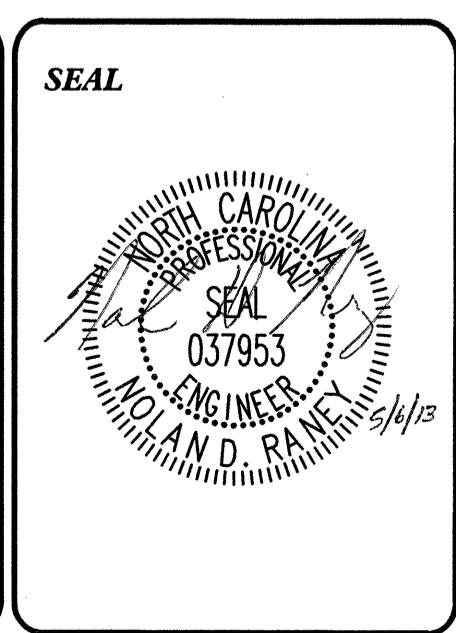


INDEX OF SHEETS

SHEET NO.	DESCRIPTION
UC-1A	TITLE SHEET
UC-1	PLAN SHEET
UC-2	PLAN SHEET
UC-3	PLAN AND PROFILE SHEET
UC-4	PLAN AND PROFILE SHEET
UC-5	PLAN SHEET
UC-6	DETAIL SHEET

WATER AND SEWER OWNERS ON PROJECT

(1) WATER/SEWER - CITY OF GOLDSBORO PUBLIC UTILITIES

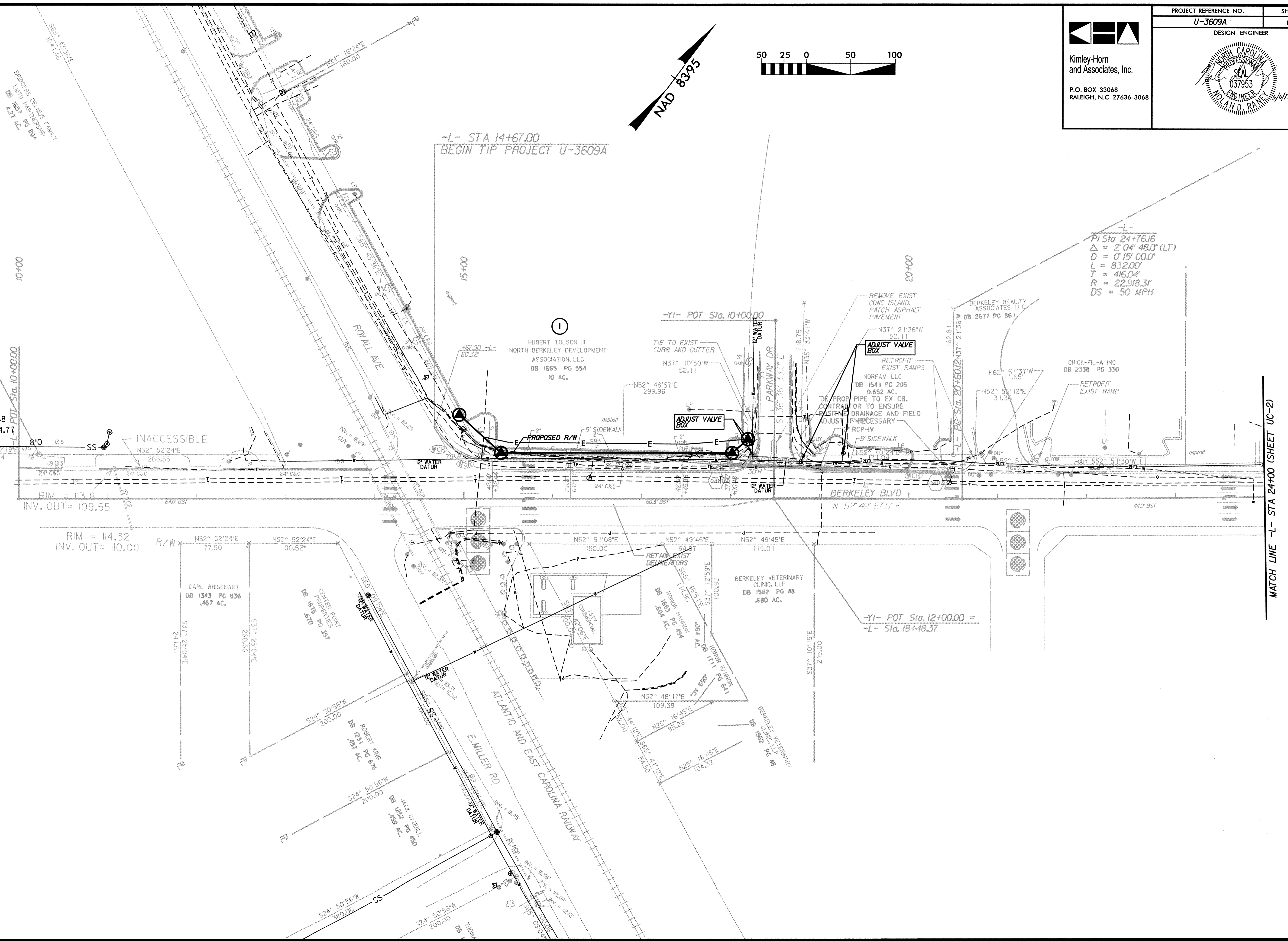
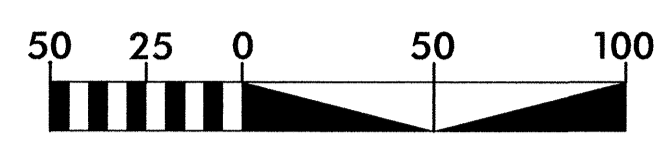


PREPARED IN THE OFFICE OF:
**DIVISION OF HIGHWAYS
UTILITIES UNIT
UTILITIES ENGINEERING**

1591 MAIL SERVICES CENTER
RALEIGH NC 27699-1591
PHONE (919) 707-6690
FAX (919) 250-4151

Roger Worthington, P.E. UTILITIES SECTION ENGINEER
Ron Wilkins, P.E. UTILITIES SQUAD LEADER PROJECT ENGINEER

Kimley-Horn
 and Associates, Inc.
 P.O. BOX 33068
 RALEIGH, N.C. 27636-3068



-L-
 PI Sta 24+76.16
 $\Delta = 2' 04'' 48.0''$ (LT)
 $D = 0' 15'' 00.0''$
 $L = 832.00'$
 $T = 416.04'$
 $R = 22,918.31'$
 $DS = 50$ MPH

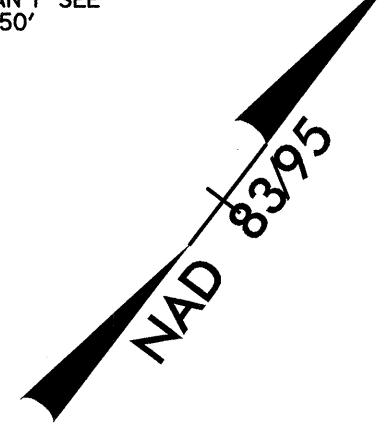
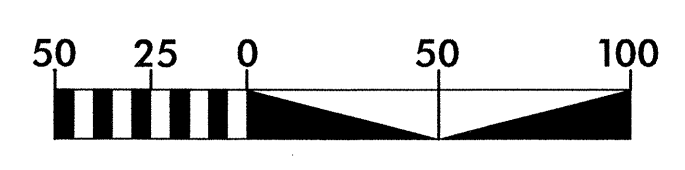
MATCH LINE -L- STA 24+100 (SHEET UC-2)

K:\PAL_Roadway\01746003 (Berkeley Blvd)\Plan\WaterSewer\01746003_LocD.dgn
 5/2/2013

-L-
 PI Sta 24+76.16
 $\Delta = 2' 04" 48.0" (LT)$
 $D = 0' 15" 00.0"$
 $L = 832.00'$
 $T = 416.04'$
 $R = 22918.31'$
 $DS = 50 \text{ MPH}$

EXISTING SANITARY SEWER				
SS-1	SS-2	SS-3	SS-4	SS-5
RIM EL=115.16' INV IN=103.36' INV OUT=103.20'	RIM EL=114.82' INV IN=102.92' INV OUT=102.82'	INV IN 103.31 INV OUT 103.24	RIM EL=113.81' INV IN=102.86' INV OUT=102.86'	RIM EL=112.96' INV IN=102.76' INV OUT=102.76'
SS-6	SS-7	SS-8	SS-9	SS-10
RIM EL=113.66' INV IN=102.36' INV OUT=102.34'	RIM EL=115.47' INV IN=102.22' INV OUT=102.17'	S.S.M.H. RIM 113.65 INV IN 95.45 INV OUT 95.35	RIM EL=115.16' INV IN=95.61' INV OUT=95.51'	RIM EL=116.10' INV IN=97.60' INV IN=97.60' INV IN=97.60' INV IN=97.60'

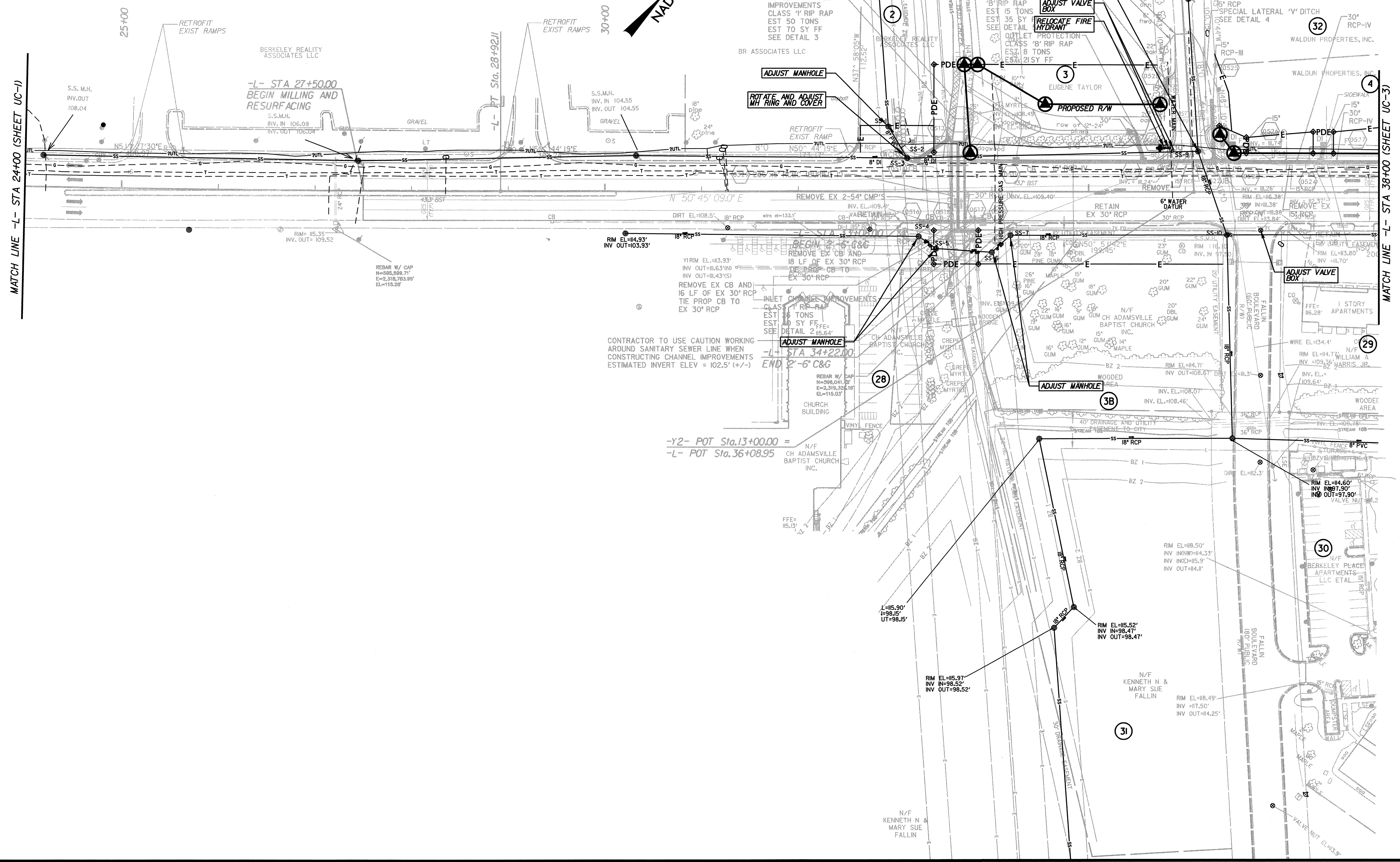
EXISTING STORMDRAIN		
DI-1	CB-1	CB-2
RIM EL=113.34' FILLED WITH DIRT	RIM EL=115.23' INV IN=109.59' INV IN=109.69' INV OUT=109.60'	RIM EL=115.46' INV CL=109.24' INV IN=109.31' INV IN=109.31' INV IN=109.31'
CB-3		
RIM EL=115.47' INV CL=109.26' INV IN=110.40'		



PROJECT REFERENCE NO. U-3609A	SHEET NO. UC-2
DESIGN ENGINEER	
Kimley-Horn and Associates, Inc. P.O. BOX 33068 RALEIGH, N.C. 27636-3068	

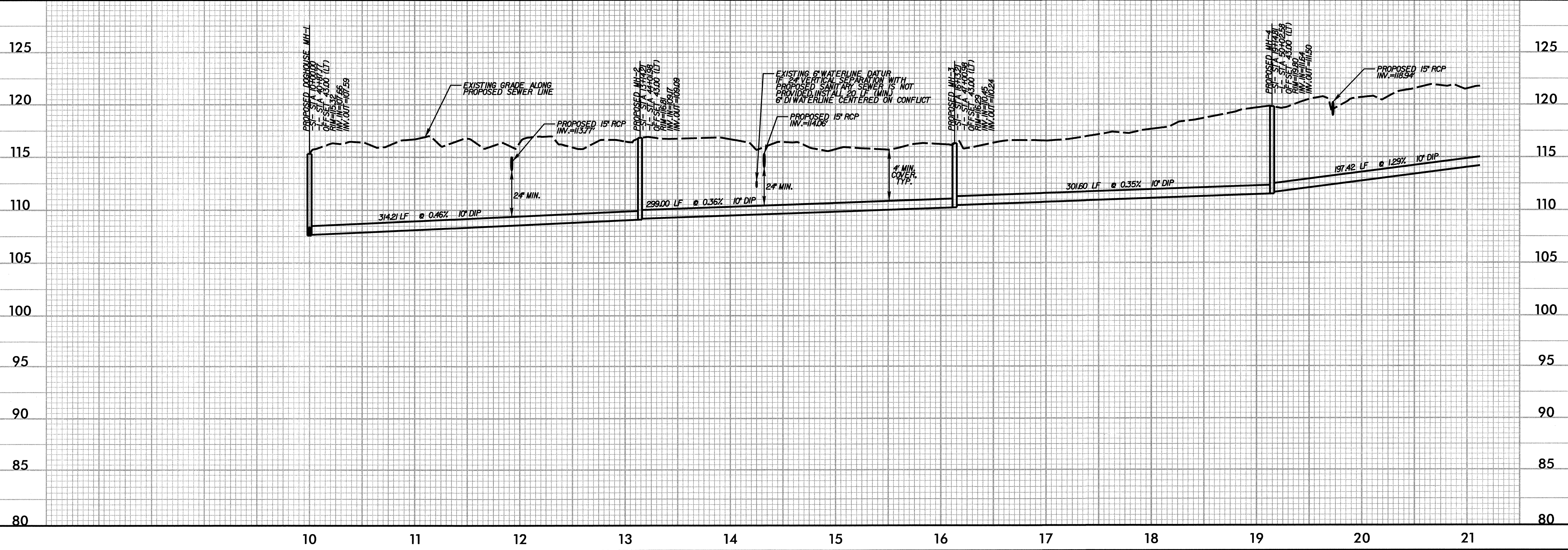
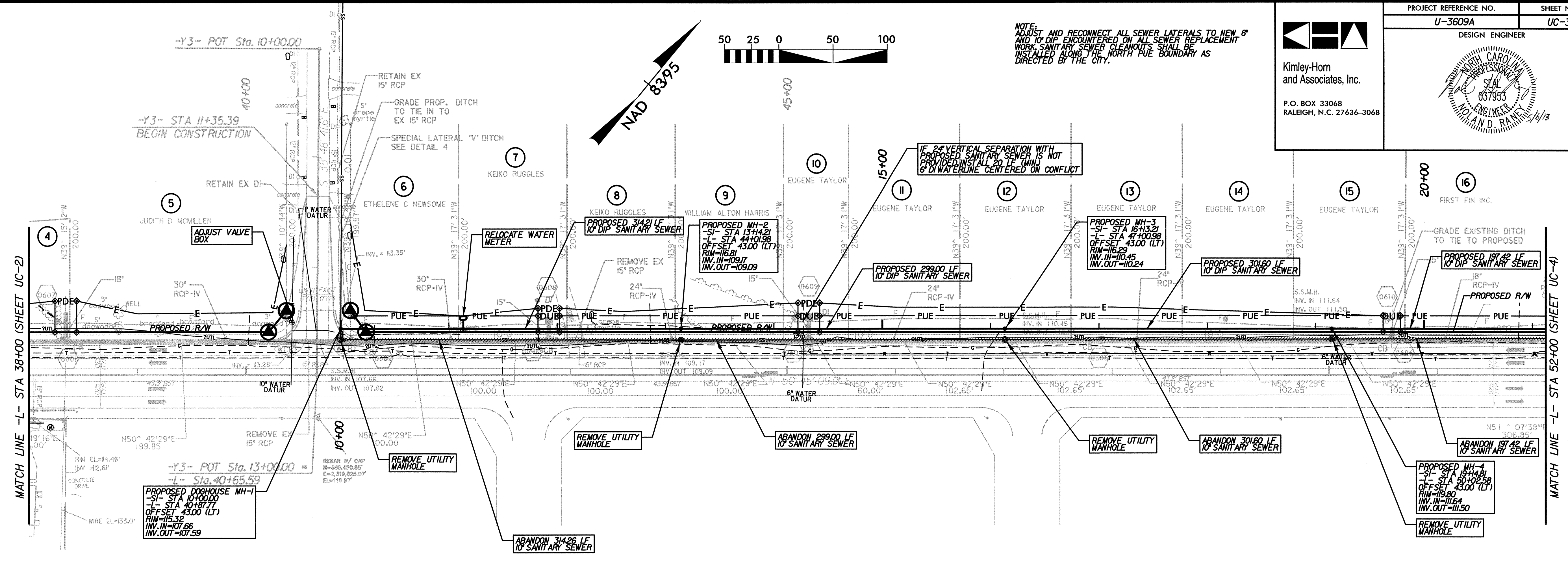
MATCH LINE -L- STA 24+00 (SHEET UC-1)

MATCH LINE -L- STA 38+00 (SHEET UC-3)



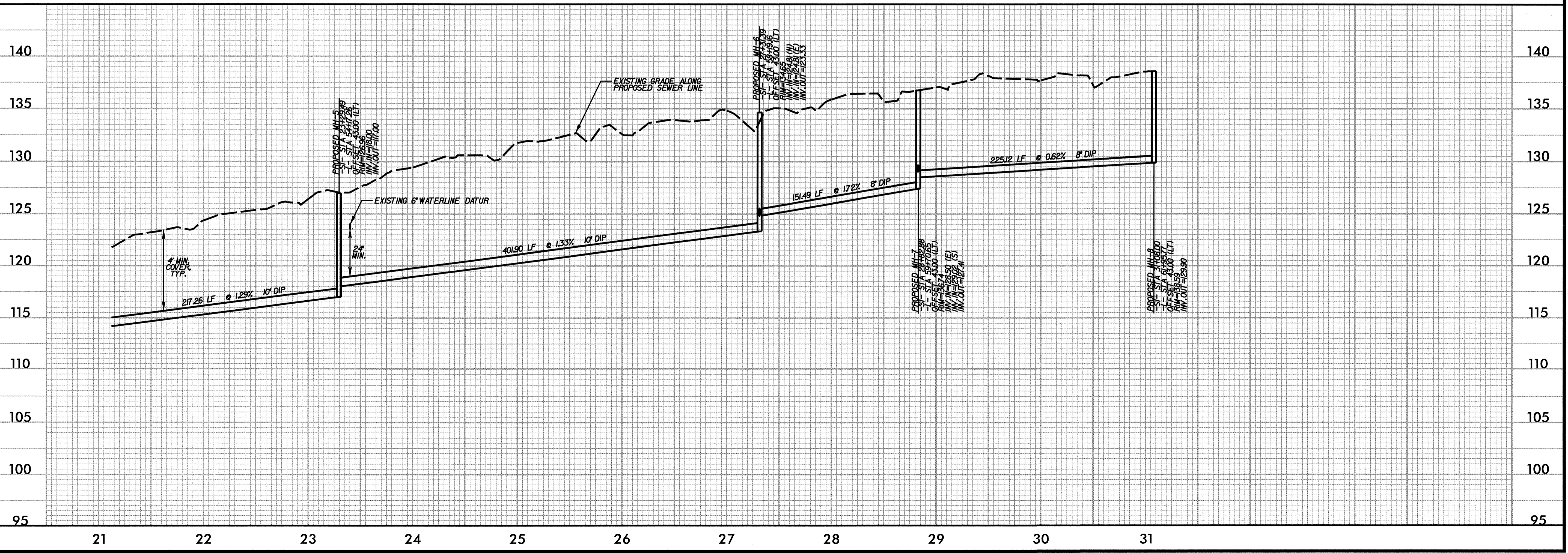
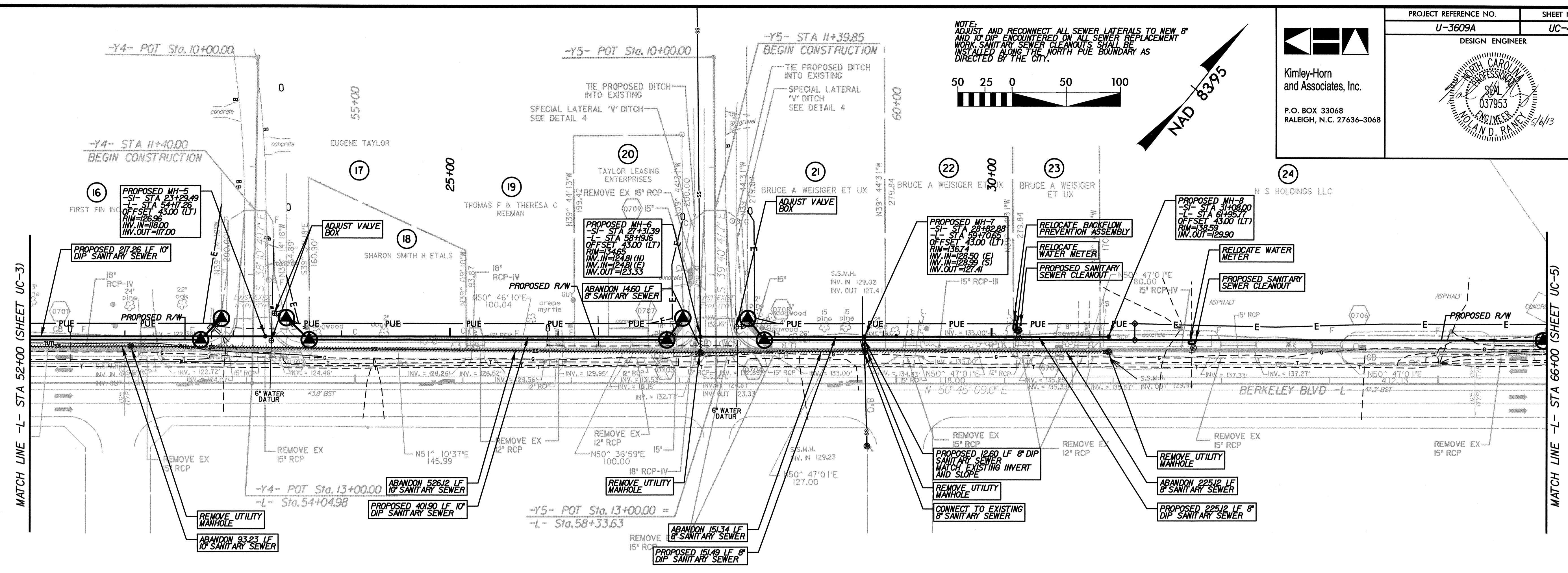
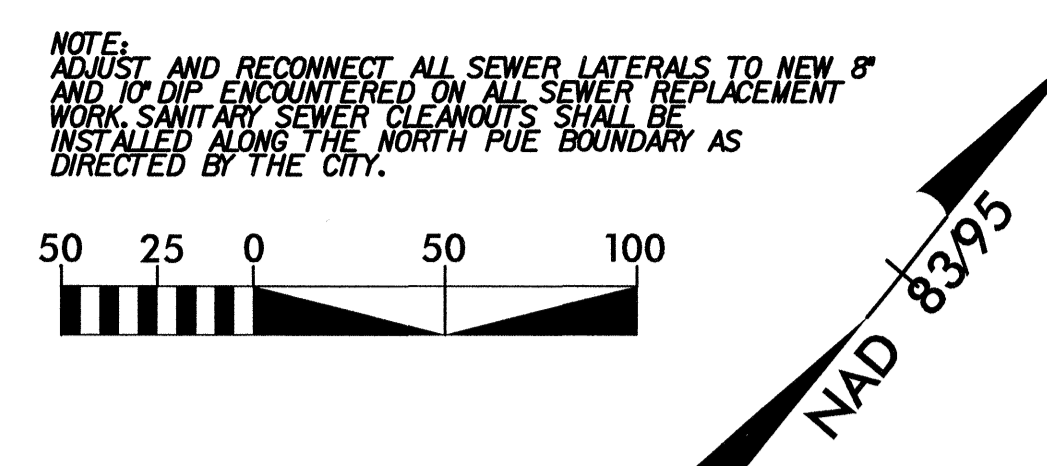
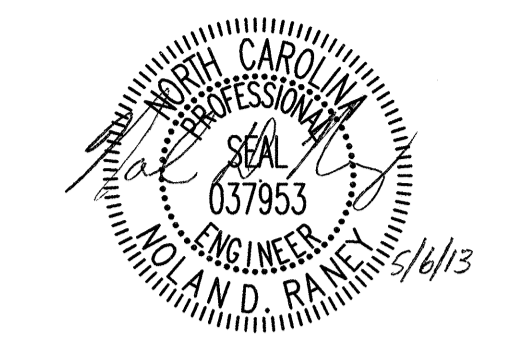


NOTE:
 ADJUST AND RECONNECT ALL SEWER LATERALS TO NEW 8" AND 10" DIP ENCOUNTERED ON ALL SEWER REPLACEMENT WORK. SANITARY SEWER CLEANOUTS SHALL BE INSTALLED ALONG THE NORTH PUE BOUNDARY AS DIRECTED BY THE CITY.

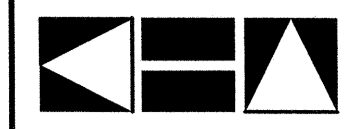


K:\PAL_Roadway\01746003 (Berkeley Blvd)\Plan\WaterSewer\01746003_1uc03.dgn
 5/2/2013

Kimley-Horn
and Associates, Inc.
P.O. BOX 33068
RALEIGH, N.C. 27636-3068

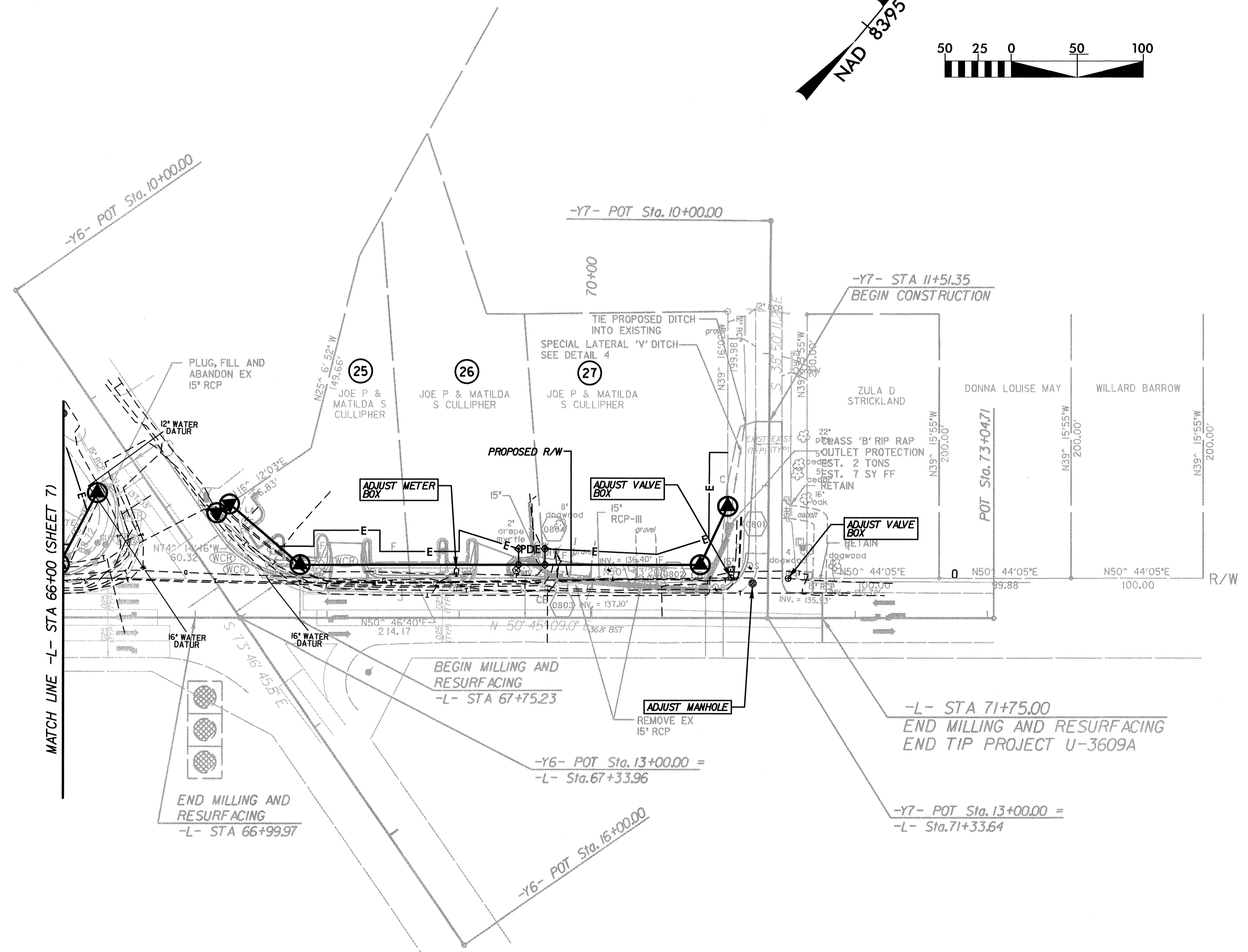
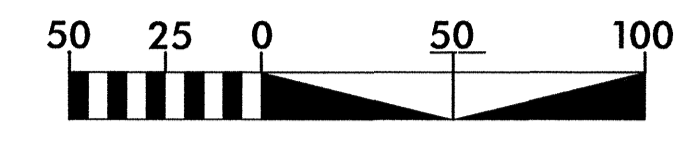
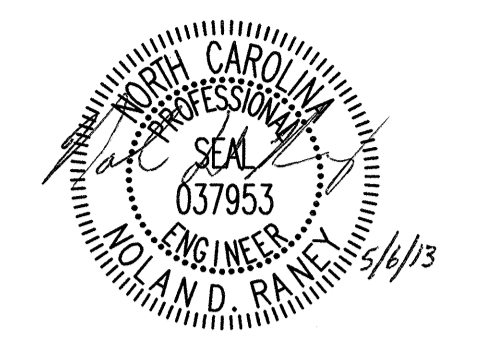


K:\PAL_Roadway\01746003 (Berkeley Blvd)\Plan\WaterSewer\01746003_Luc04.dgn
5/2/2013



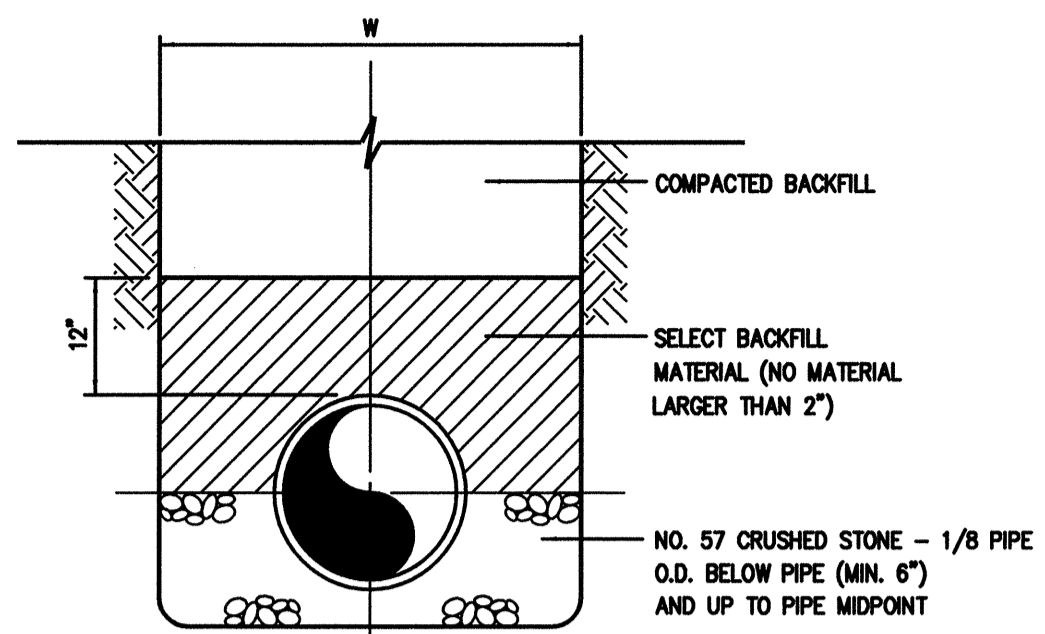
Kimley-Horn
and Associates, Inc.

P.O. BOX 33068
RALEIGH, N.C. 27636-3068

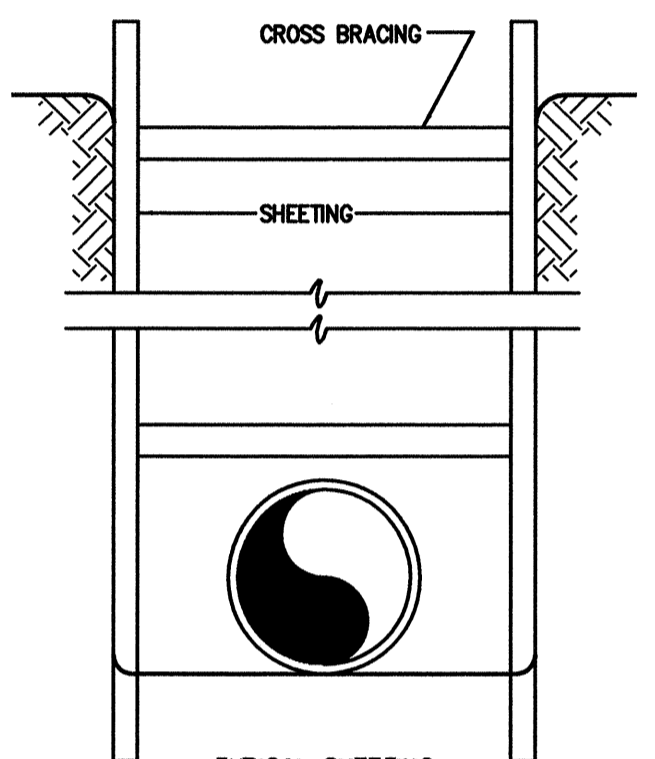


K:\PAL_Roadway\011746003 (Berkeley Blvd)\Plan\Water Sewer\011746003_uc05.dgn

5/2/2013



TYPE B
0222102

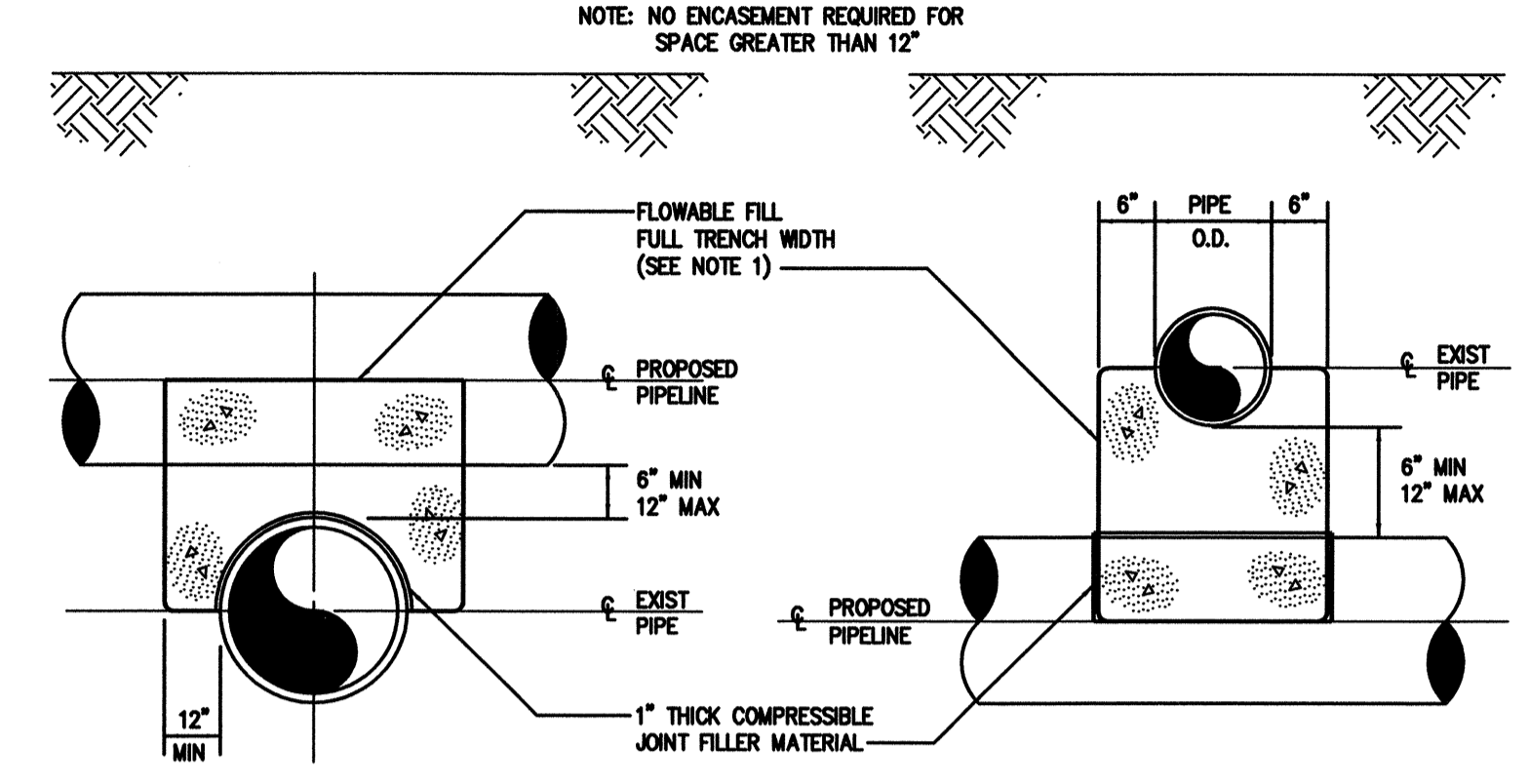


TYPICAL SHEETING
0222121

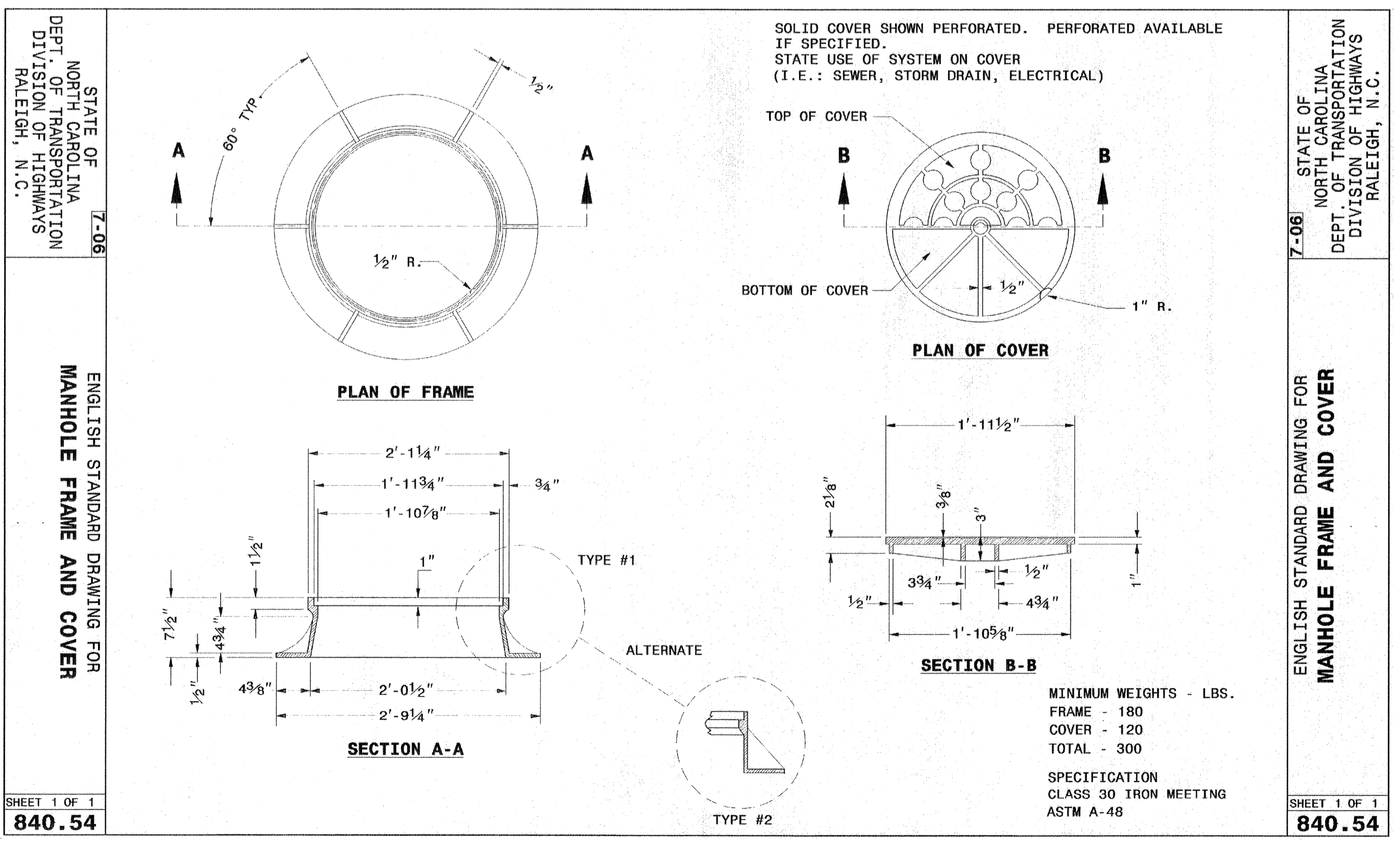
INTERNAL DIAMETER OF PIPE	WIDTH OF TRENCH	
	MAX	W-MIN
4-6"	3'-9"	2'-0"
8-10"	3'-9"	2'-2"
12"	3'-9"	O.D.+2"
14"-16"	4'-2"	O.D.+2"
18"	4'-4"	O.D.+2"
20"-21"	4'-6"	O.D.+2"
24"	4'-11"	O.D.+2"
27"	5'-9"	O.D.+2"
30"	6'-7"	O.D.+2"
36"	7'-4"	O.D.+2"
42"	8'-2"	O.D.+2"
48"	8'-9"	O.D.+2"
54"	9'-4"	O.D.+2"
60"	9'-10"	O.D.+2"
72"	11'-0"	O.D.+2"
78"	11'-8"	O.D.+2"
84"	12'-0"	O.D.+2"
90"	12'-6"	O.D.+2"
96"	13'-0"	O.D.+2"
108"	14'-0"	O.D.+2"
DEPTH OF CUT	S MAXIMUM PAVEMENT REPLACEMENT WIDTH	
	S	W
0-6"	S=W+4"	
>6-8"	S=W+8"	
>8-10"	S=W+12"	
>10-12"	S=W+16"	
>12-14"	S=W+20"	
>14-16"	S=W+24"	
>16-18"	S=W+28"	
>18"	S=W+32"	

W = TRENCH WIDTH AT BOTTOM OF PIPE. TRENCH SIDE SLOPES SHALL BE IN ACCORDANCE WITH OSHA REQUIREMENTS.

0222110

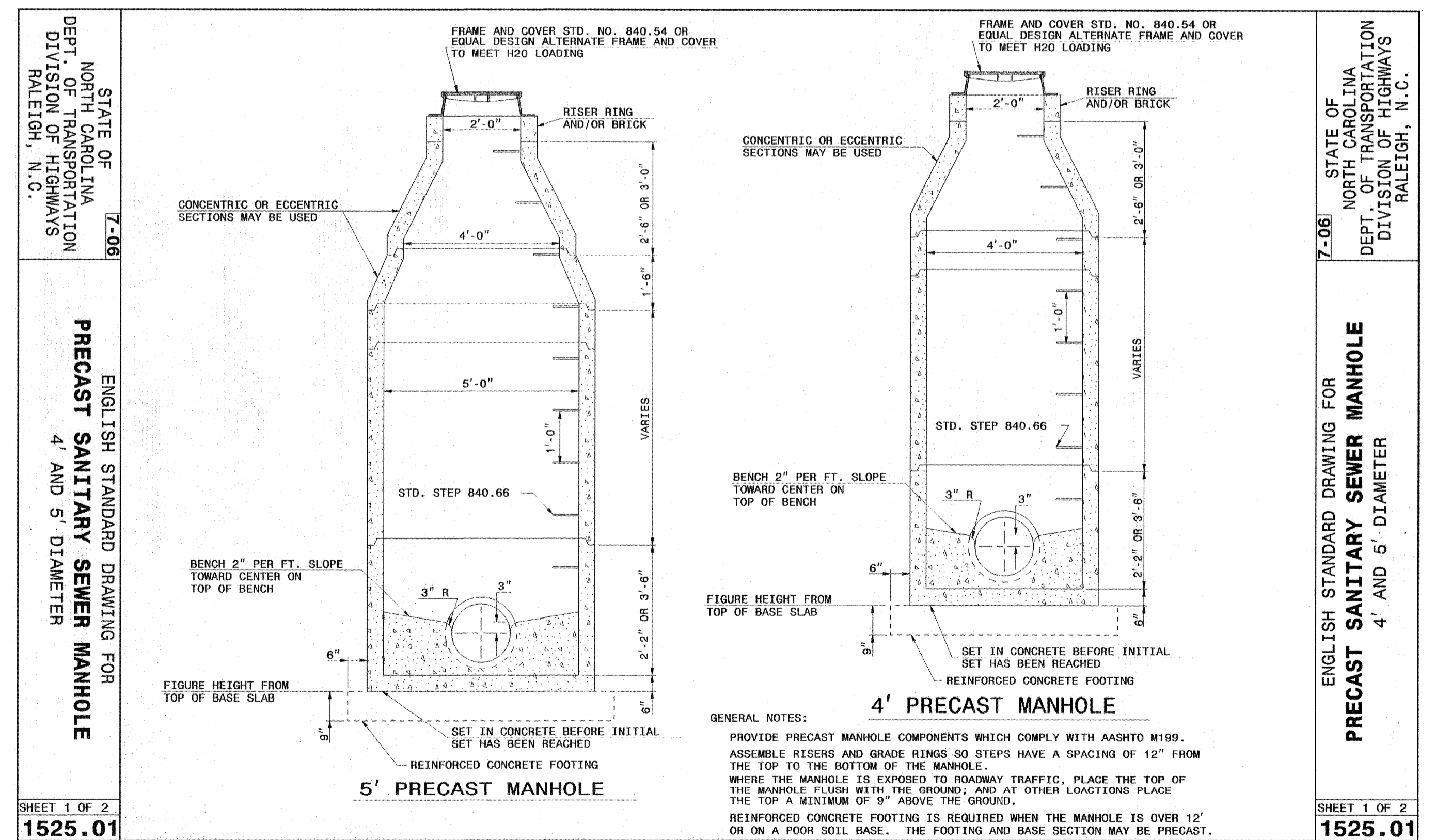


0222118



840.54

840.54



1525.01

1525.01

MANHOLE NUMBER	NORTHING	EASTING	DIAMETER (FT)	WIDTH OF EXTENDED BASE (MIN)	TYPE OF COVER	VENT PIPE REQUIRED	ELEV OF VENT PIPE	INSIDE AND OUTSIDE STEPS REQD	CONCRETE BALLAST RECD(CY)	INTERIOR PAINTED	EXPOSED EXTERIOR PAINTED
MH NO. 1	596527.6904	2319789.9365	4'	0.5'	STANDARD	NO	----	YES	----	YES	NO
MH NO. 2	596726.4810	2320033.2657	4'	0.5'	STANDARD	NO	----	YES	----	YES	NO
MH NO. 3	596915.6495	2320284.8171	4'	0.5'	STANDARD	NO	----	YES	----	YES	NO
MH NO. 4	597106.4653	2320498.3649	4'	0.5'	STANDARD	NO	----	YES	----	YES	NO
MH NO. 5	597368.8203	2320819.5201	4'	0.5'	STANDARD	NO	----	YES	----	YES	NO
MH NO. 6	597623.0921	2321130.7609	4'	0.5'	STANDARD	NO	----	YES	----	YES	NO
MH NO. 7	597718.9366	2321248.0792	4'	0.5'	STANDARD	NO	----	YES	----	YES	NO
MH NO. 8	597961.3608	2321422.4133	4'	0.5'	STANDARD	NO	----	YES	----	YES	NO

NOTE: PROVIDE 8" MIN. COMPACTED CRUSHED STONE, NCDOT NO. 57 BENEATH BASE OF EACH MANHOLE.

K:\RAL_Roadway\01746003 (Berkeley Blvd)\Plan\WaterSewer\01746003.uc06.dgn 5/16/2013