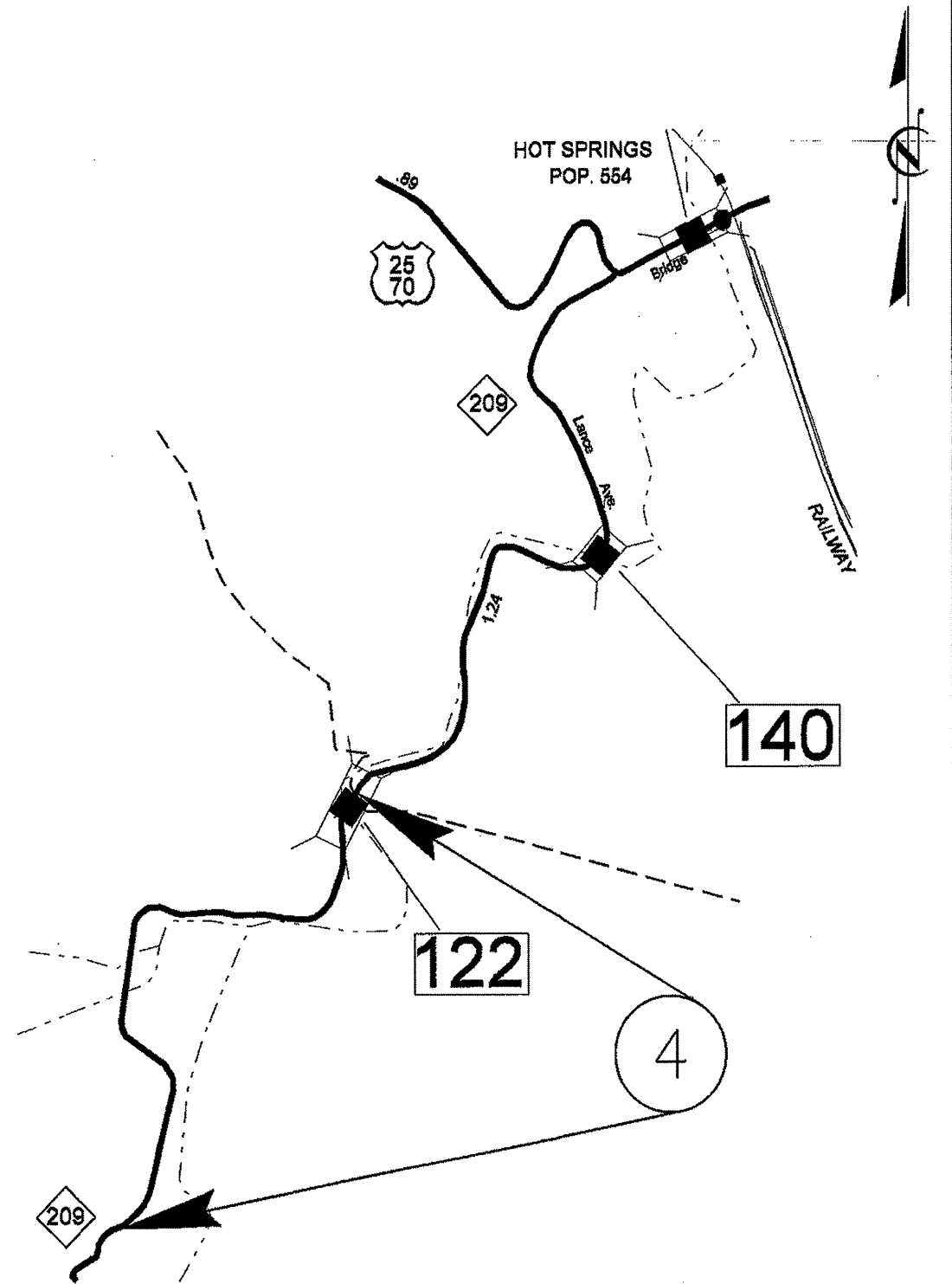
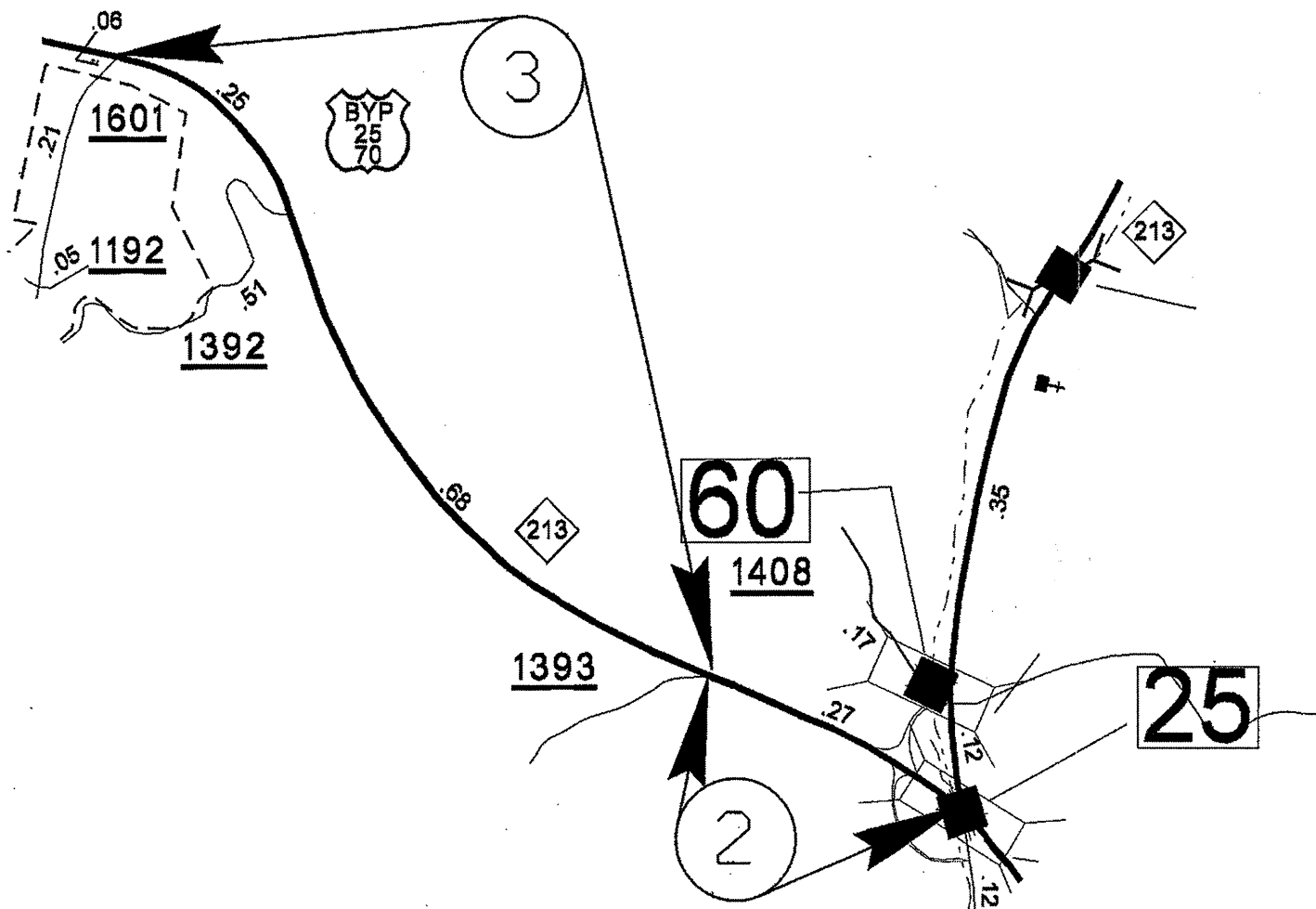
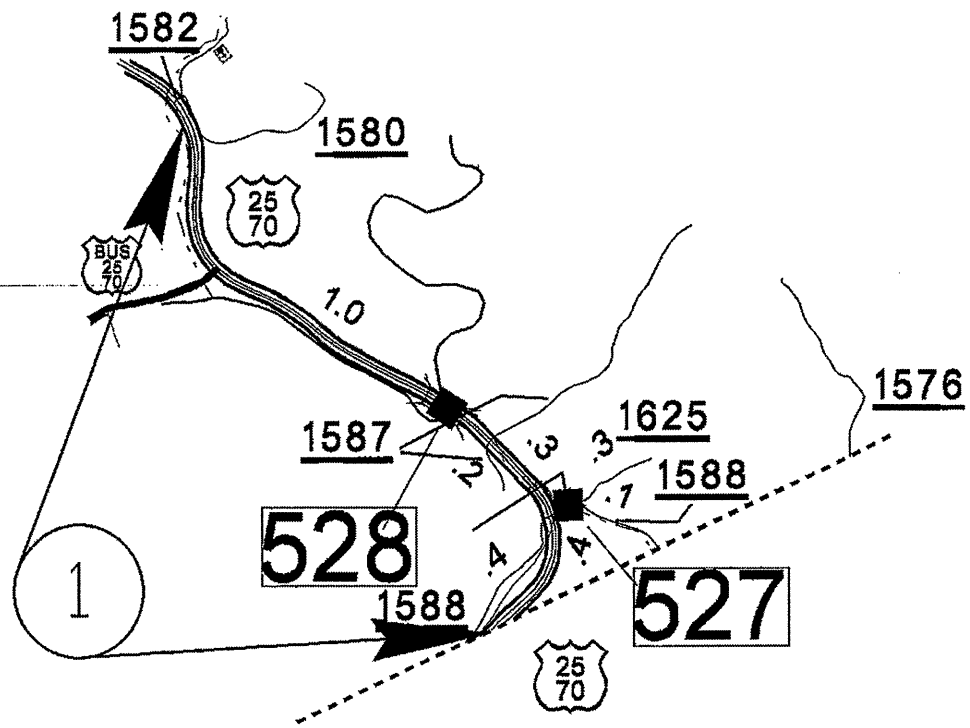
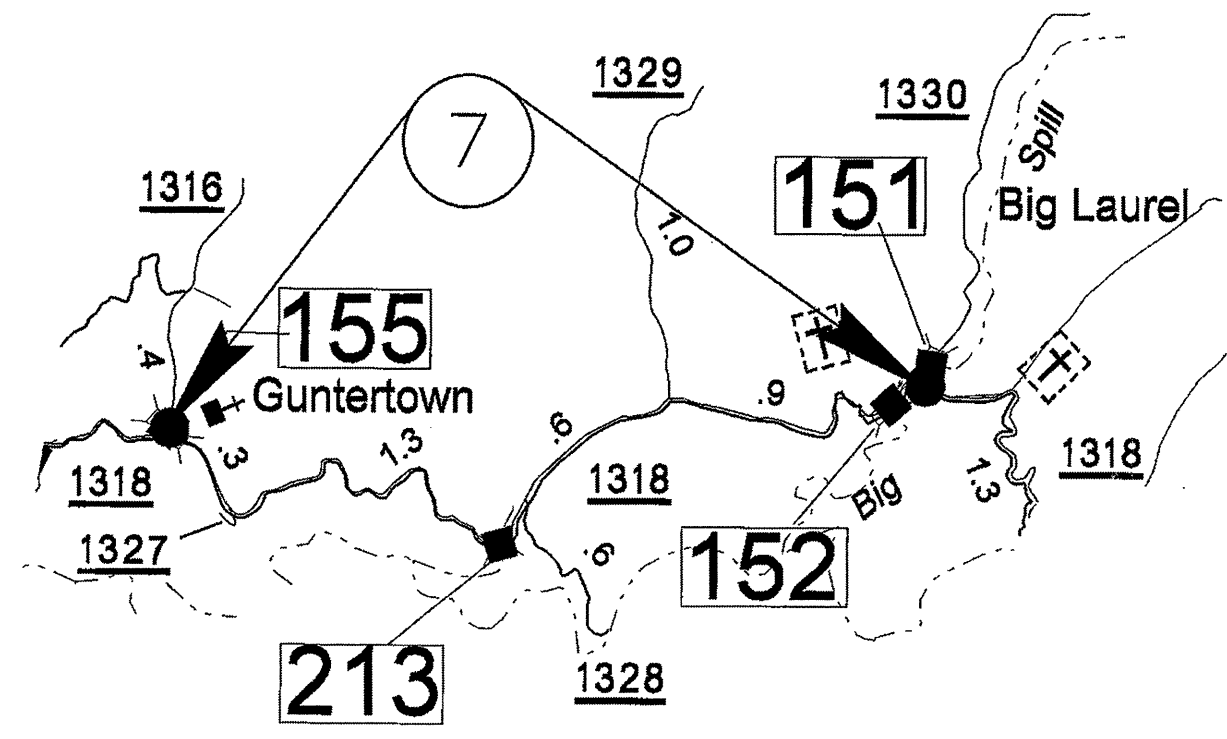
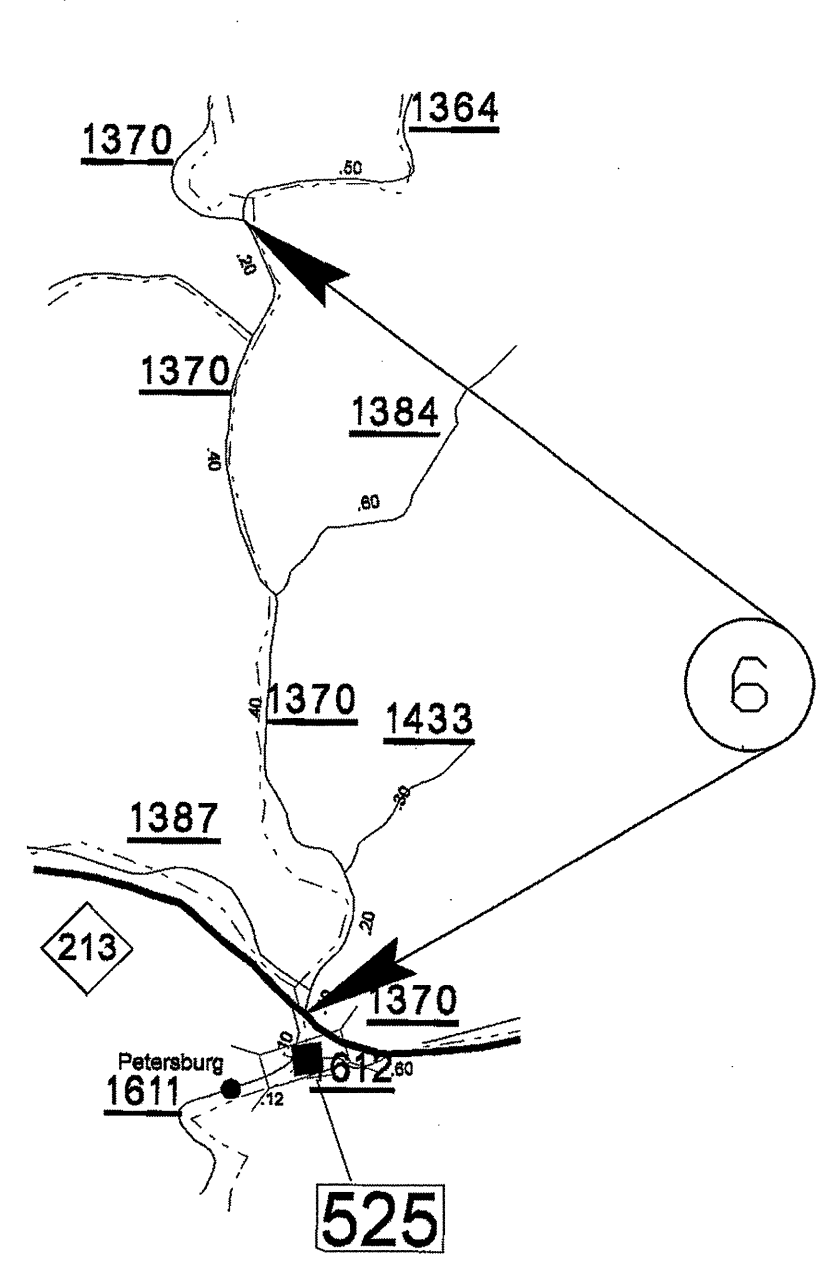
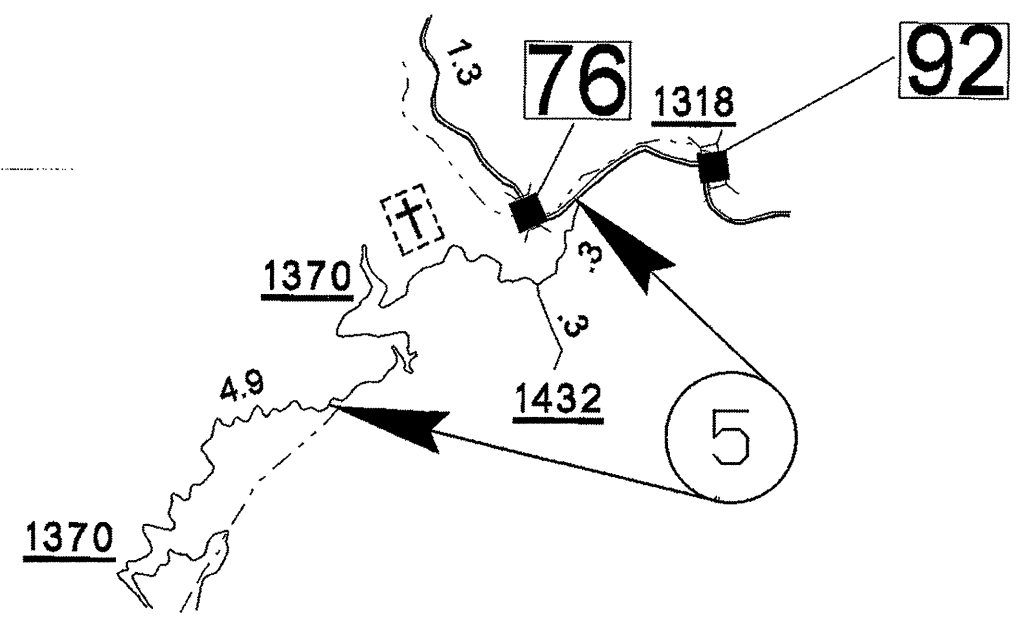


PROJECT NO.	SHEET NO.	TOTAL SHEETS
13CR.10571.11 & 13CR.20571.12	1	



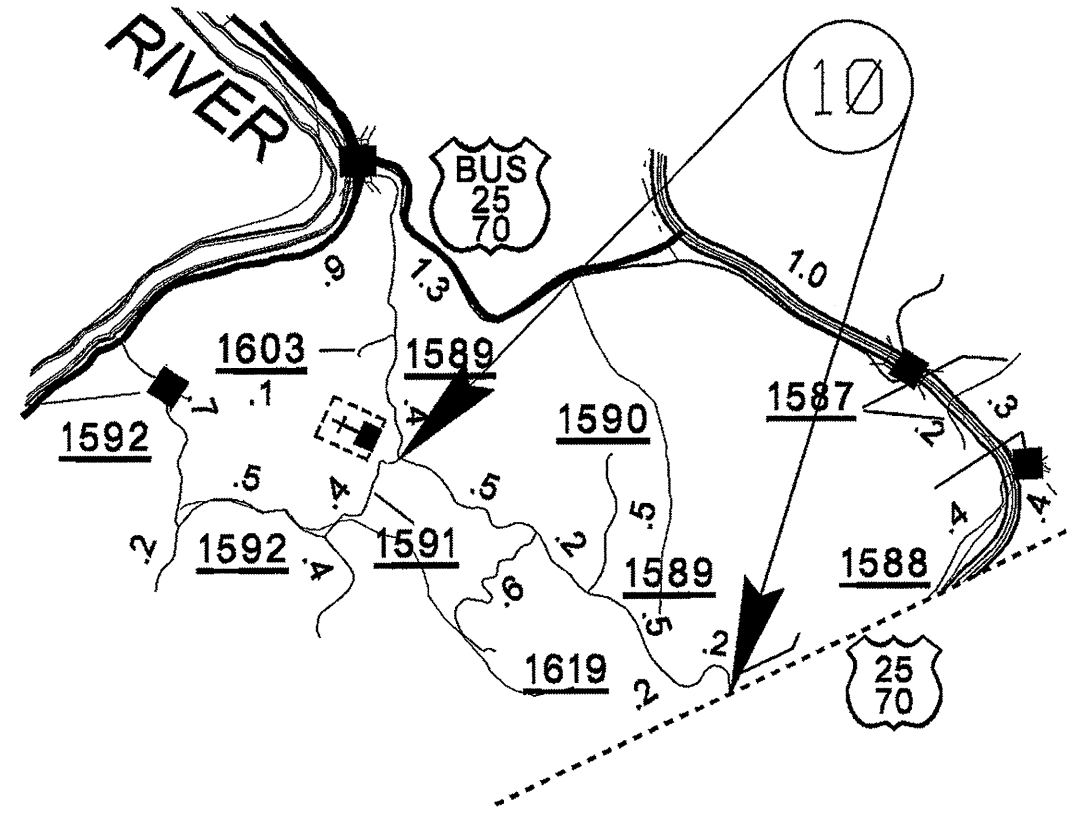
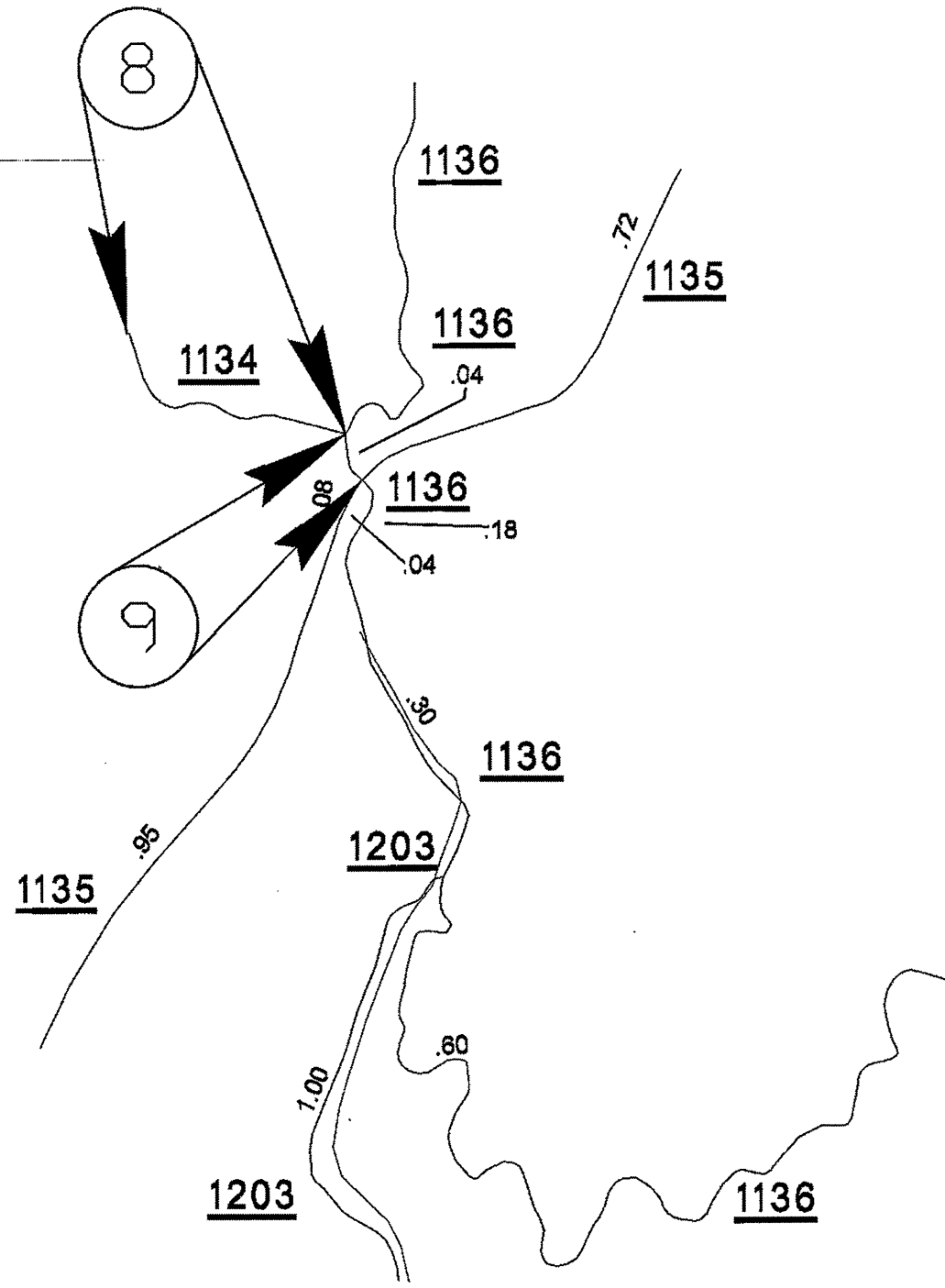
MADISON COUNTY

PROJECT NO.	SHEET NO.	TOTAL SHEETS
13CR.10571.11 & 13CR.20571.12	2	



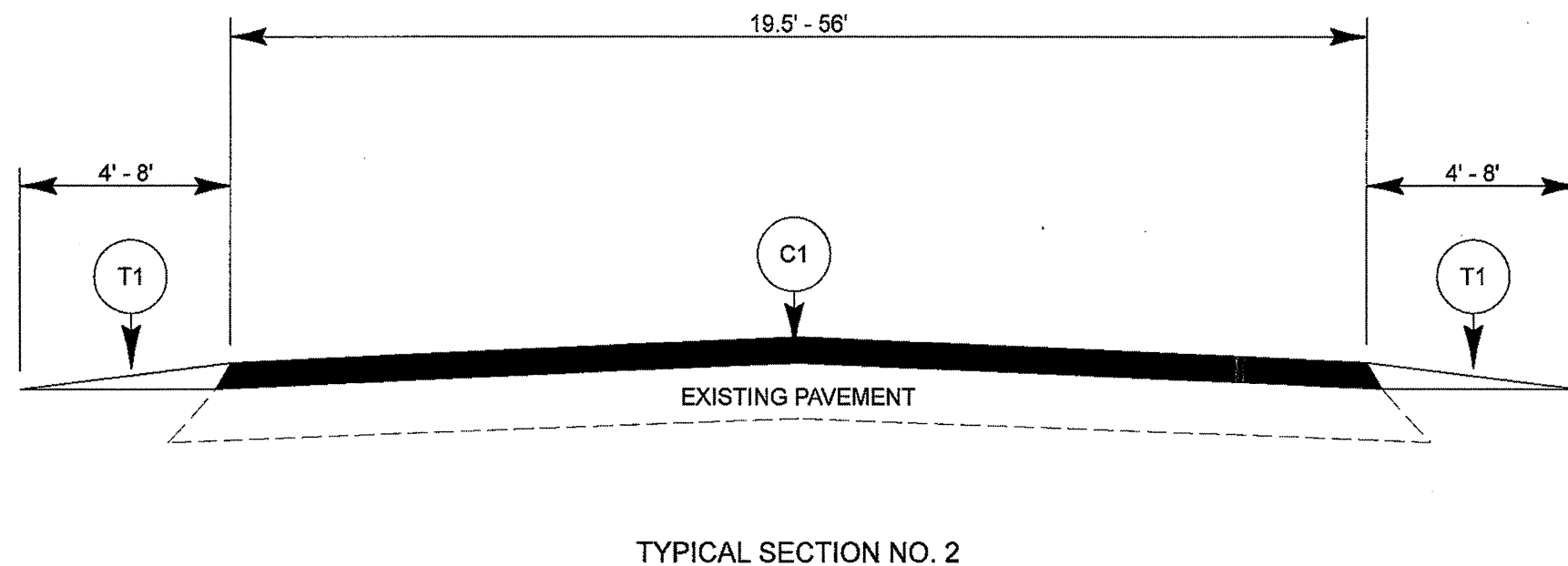
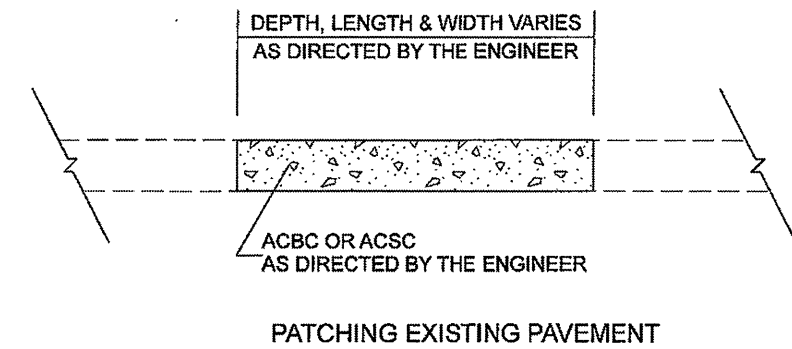
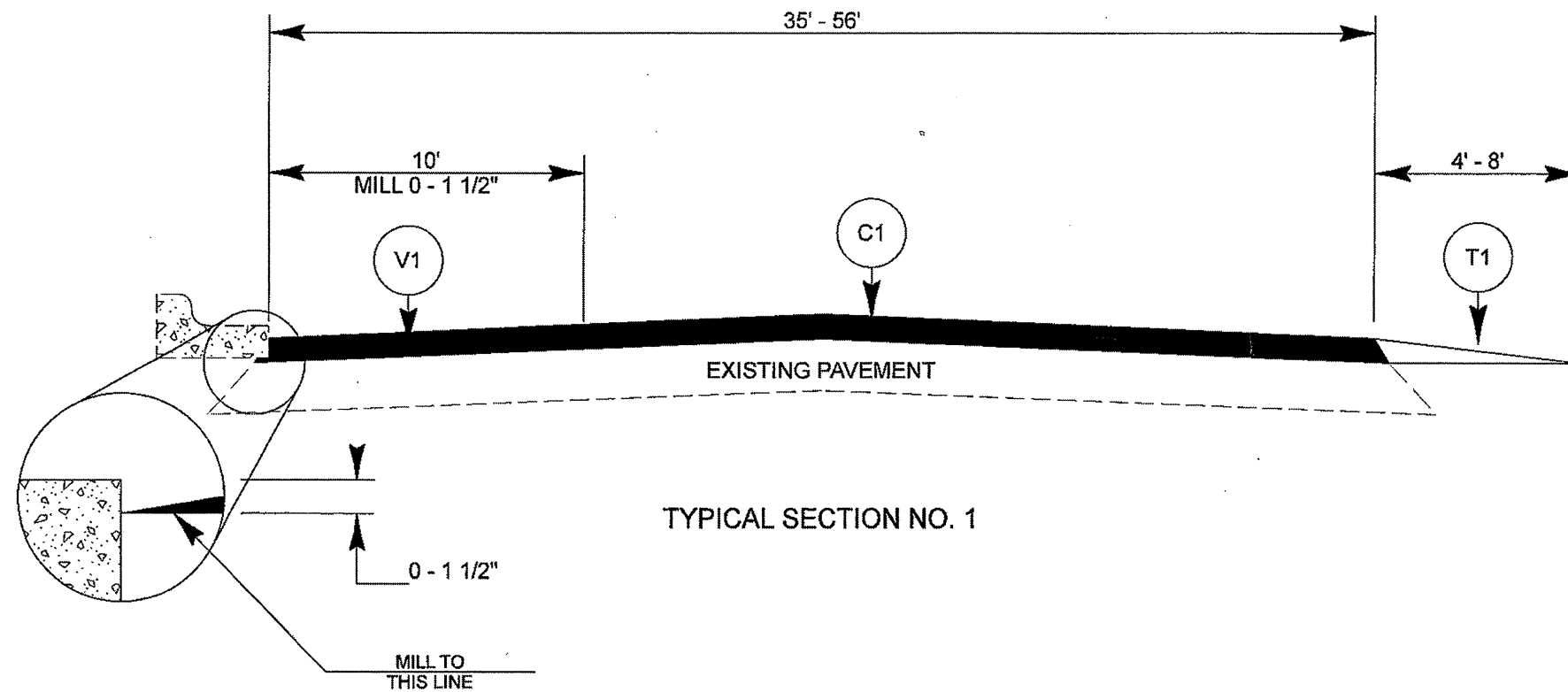
MADISON COUNTY

PROJECT NO.	SHEET NO.	TOTAL SHEETS
13CR.10571.11 & 13CR.20571.12	3	



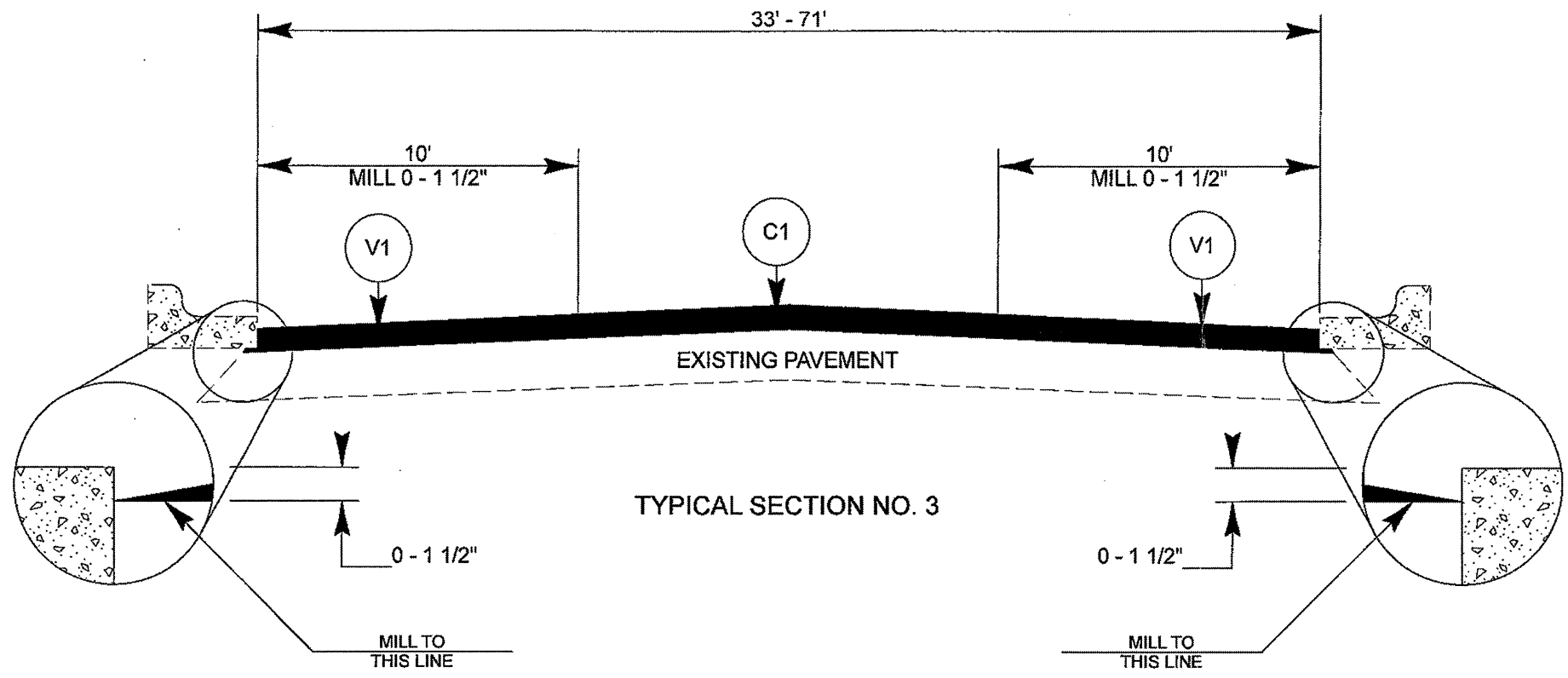
MADISON COUNTY

PROJECT NO.	SHEET NO.	TOTAL SHEETS
13CR.10571.11, 13CR.20571.12	4	

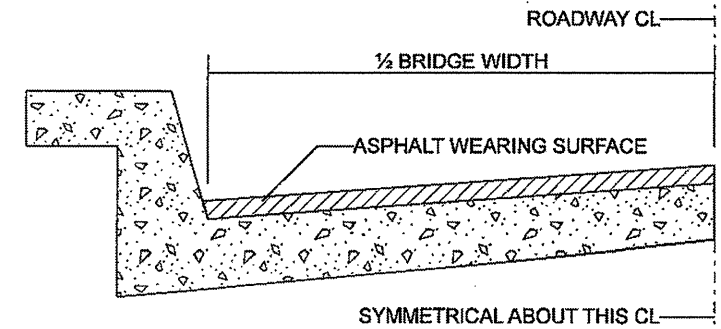
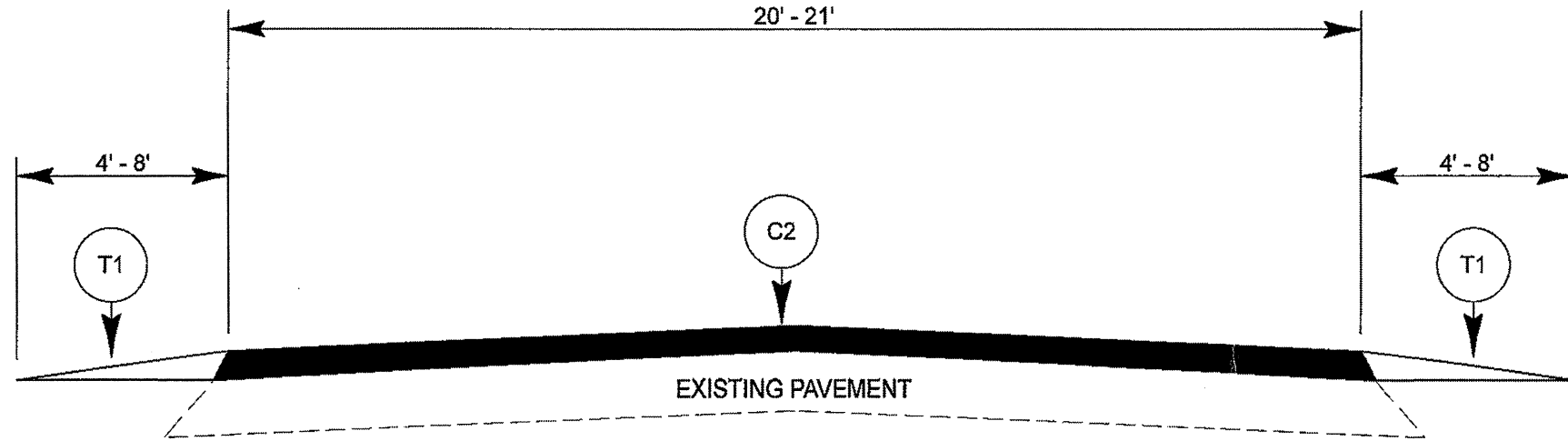


PAVEMENT SCHEDULE	
C1	PROP. APPROX. 1-1/2" ACSC, TYPE S9.5B, AT AN AVERAGE RATE OF 168 LBS. PER SQ. YD.
C2	PROP. APPROX. 1-1/2" ACSC, TYPE SF9.5A, AT AN AVERAGE RATE OF 165 LBS. PER SQ. YD.
T1	SHOULDER RECONSTRUCTION
V1	MILLING ASPHALT PAVEMENT, 0 TO 1-1/2" DEPTH
V2	MILLING ASPHALT PAVEMENT, 1-1/2" DEPTH
Z1	MILLED RUMBLE STRIPS

PROJECT NO. 13CR.10571.11, 13CR.20571.12	SHEET NO. 5	TOTAL SHEETS
------------------------------------------------	-----------------------	--------------



PAVEMENT SCHEDULE	
C1	PROP. APPROX. 1-1/2" ACSC, TYPE S9.5B, AT AN AVERAGE RATE OF 168 LBS. PER SQ. YD.
C2	PROP. APPROX. 1-1/2" ACSC, TYPE SF9.5A, AT AN AVERAGE RATE OF 165 LBS. PER SQ. YD.
T1	SHOULDER RECONSTRUCTION
V1	MILLING ASPHALT PAVEMENT, 0 TO 1-1/2" DEPTH
V2	MILLING ASPHALT PAVEMENT, 1-1/2" DEPTH
Z1	MILLED RUMBLE STRIPS



TYPICAL SECTION NO. 4

BRIDGE HALF TYPICAL SECTION

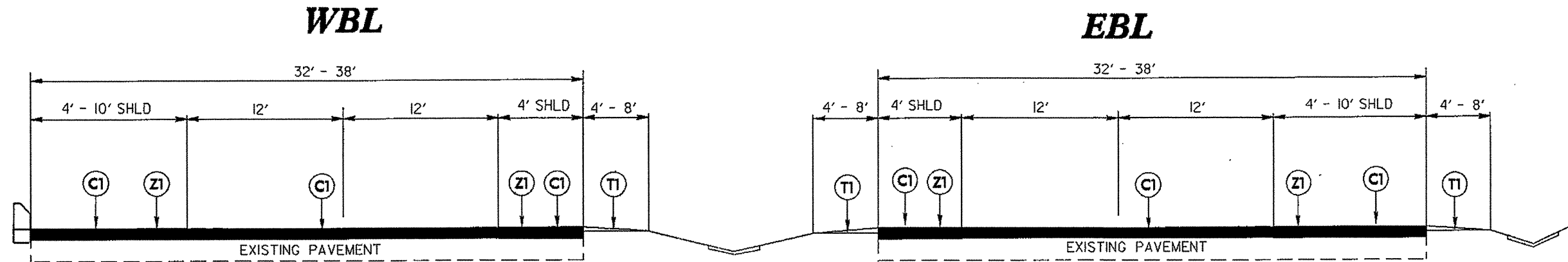
FOR BRIDGES WITH FLOOR DRAINS, CARE SHALL BE EXERCISED IN PLACING THE WEARING SURFACE AROUND FLOOR DRAINS SO AS NOT TO HINDER EFFECTIVE DRAINAGE. ALL DRAINS SHALL BE LEFT OPEN

THE PROPOSED WEARING SURFACE SHALL VARY IN THICKNESS AS NECESSARY TO PROVIDE A SMOOTH RIDING SURFACE. THE MINIMUM THICKNESS SHOULD DEPEND ON PAVEMENT TYPE AS FOLLOWS: S4.75A 1/2", SF9.5A 1.0", S9.5X 1.5", S12.5X 2.0", ULTRATHIN HOT MIX ASPHALT-TYPE A 1/2", ULTRATHIN HOT MIX ASPHALT-TYPE B 5/8", ULTRATHIN HOT MIX ASPHALT-TYPE C 1/2". THE MAXIMUM THICKNESS SHOULD DEPEND ON PAVEMENT TYPE AS FOLLOWS: S4.75A 1.0", SF9.5A 1.5", S9.5X 2.0", S12.5X 2.0", ULTRATHIN HOT MIX ASPHALT-TYPE A 3/4", ULTRATHIN HOT MIX ASPHALT-TYPE B 5/8", ULTRATHIN HOT MIX ASPHALT-TYPE C 1/2".

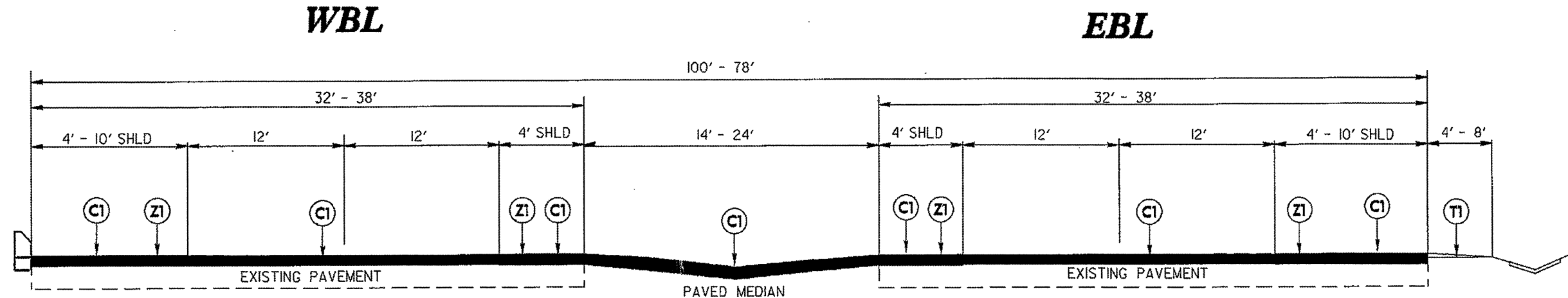
NOTES

ALL UNPAVED ROADS TO BE RESURFACED 50' FROM EDGE OF PAVEMENT OF MAIN PROJECT. ALL PAVED S.R. ROADS TO BE RESURFACED TO THE ENDS OF THE RADII, OR AS DIRECTED BY THE ENGINEER.
EDGES, PAVEMENT WIDENING, INTERSECTIONS AND BRIDGE FLARES ARE INCLUDED IN THE TABLE OF QUANTITIES.
SHOULDERS AND DITCHES ARE TO BE CONSTRUCTED BY OTHERS UNLESS OTHERWISE INDICATED.
BRIDGES ARE TO BE RESURFACED AT LOCATIONS AND TO DEPTH AS DIRECTED BY THE ENGINEER.

PROJECT NO.	SHEET NO.	TOTAL SHEETS
13CR.10571.11 , 13CR.20571.12	6	



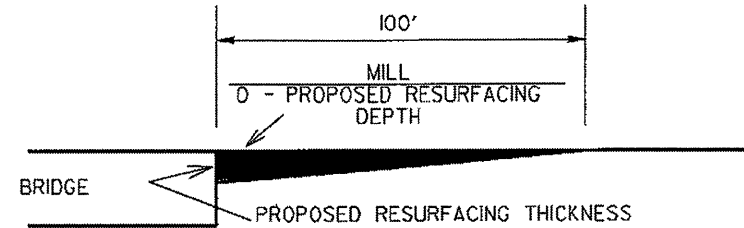
TYPICAL SECTION NO. 5



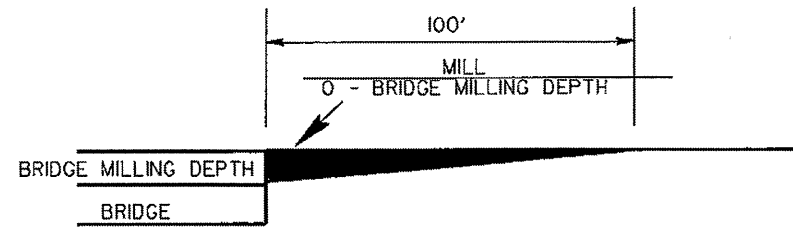
TYPICAL SECTION NO. 6

PAVEMENT SCHEDULE	
C1	PROP. APPROX. 1 1/2" ASPHALT CONCRETE SURFACE COURSE, TYPE 99.5B, AT AN AVERAGE RATE OF 168 LBS. PER SQ. YD.
T1	SHOULDER RECONSTRUCTION
Z1	MILLED RUMBLE STRIPS

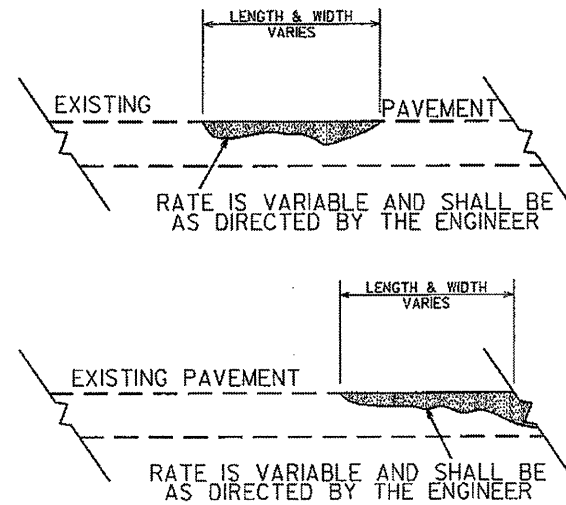
PROJECT NO.	SHEET NO.	TOTAL SHEETS
13CR.10571.11 , 13CR.20571.12	7	



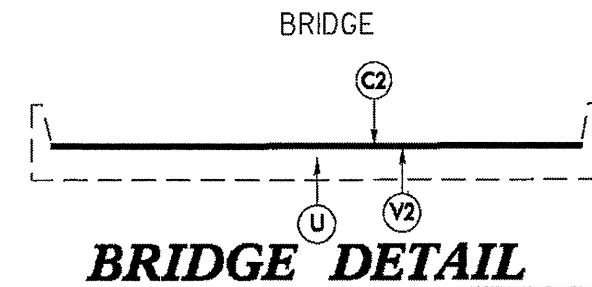
INCIDENTAL MILLING DETAIL AT BRIDGE APPROACHES
WHERE BRIDGES WILL NOT BE RESURFACED
COST OF BRIDGE APPROACH MILLING IS INCIDENTAL TO OTHER ITEMS



INCIDENTAL MILLING DETAIL AT BRIDGE APPROACHES
WHERE BRIDGES WILL BE MILLED THEN RESURFACED
COST OF BRIDGE APPROACH MILLING IS INCIDENTAL TO OTHER ITEMS



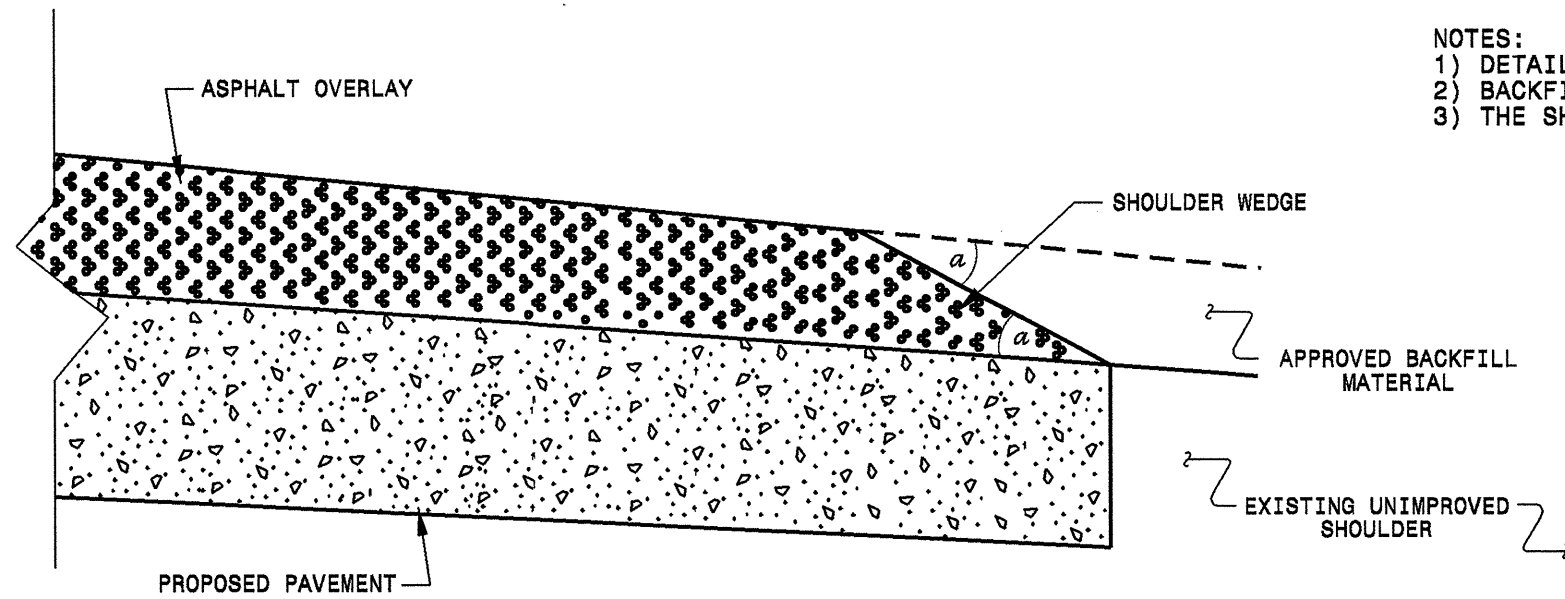
**DETAIL SHOWING
METHOD OF WEDGING**



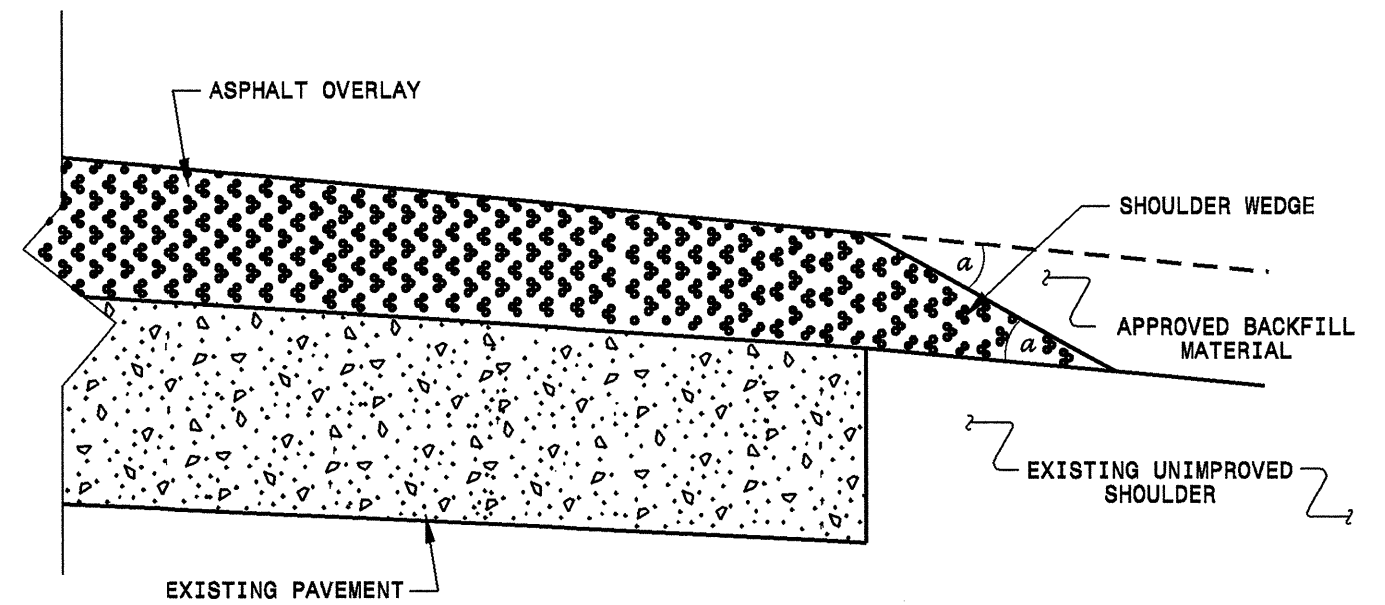
**BRIDGE # 152 MAP 7 AND
BRIDGE # 213 MAP 7**
MILL 1½" OFF EXISTING PAVEMENT
SEE MAPS FOR BRIDGE LOCATION

PAVEMENT SCHEDULE	
C2	PROP. APPROX. 1½" ASPHALT CONCRETE SURFACE COURSE, TYPE SF6.6A, AT AN AVERAGE RATE OF 185 LBS. PER SQ. YD.
U	EXISTING PAVEMENT
V2	MILLING ASPHALT PAVEMENT, 1½" DEPTH

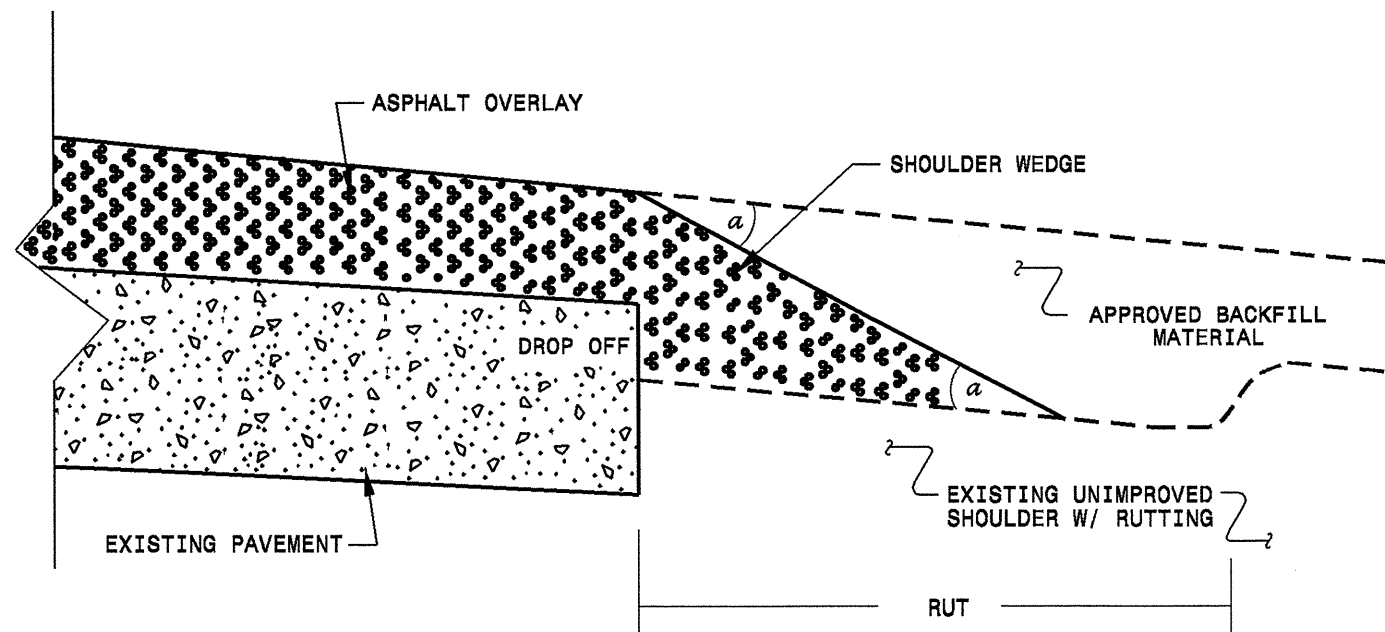
- NOTES:
- 1) DETAIL DOES NOT APPLY TO OGAFD AND ULTRA-THIN BONDED WEARING COURSE.
 - 2) BACKFILL SHOULDER WITH APPROVED MATERIAL.
 - 3) THE SHOULDER WEDGE DEVICE MAY BE DISENGAGED AT PAVED DRIVEWAYS AND SIDE STREETS.



SHOULDER WEDGE DETAIL
(Resurfacing Projects w/ Widening or
with Existing Paved Shoulder having no dropoffs)



SHOULDER WEDGE DETAIL
(Resurfacing Projects w/ NO Widening)



SHOULDER WEDGE DETAIL
(Resurfacing Adjacent to
Rutted Shoulder)

- SHOULDER WEDGE ANGLE = 30°

CONTRACT STANDARDS AND DEVELOPMENT UNIT			
Office 919-707-6950		FAX 919-250-4119	
SHOULDER WEDGE DETAILS			
ORIGINAL BY: T. SPELL	DATE: 7-19-11		
MODIFIED BY:	DATE: 10/16/12		
CHECKED BY:	DATE:		
FILE SPEC: s:\user\details\stand\shoulderwedge\detail.dgn			

