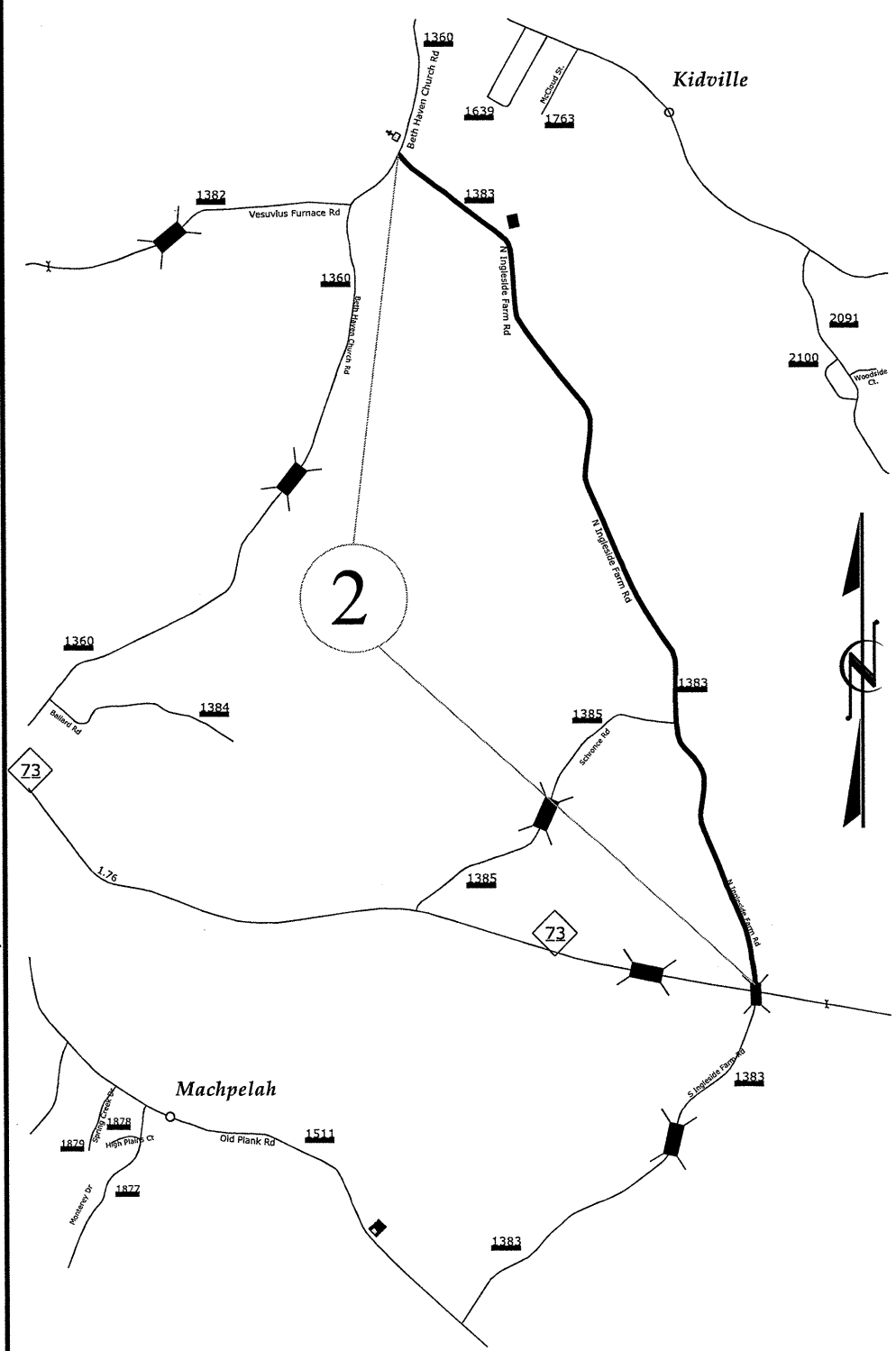
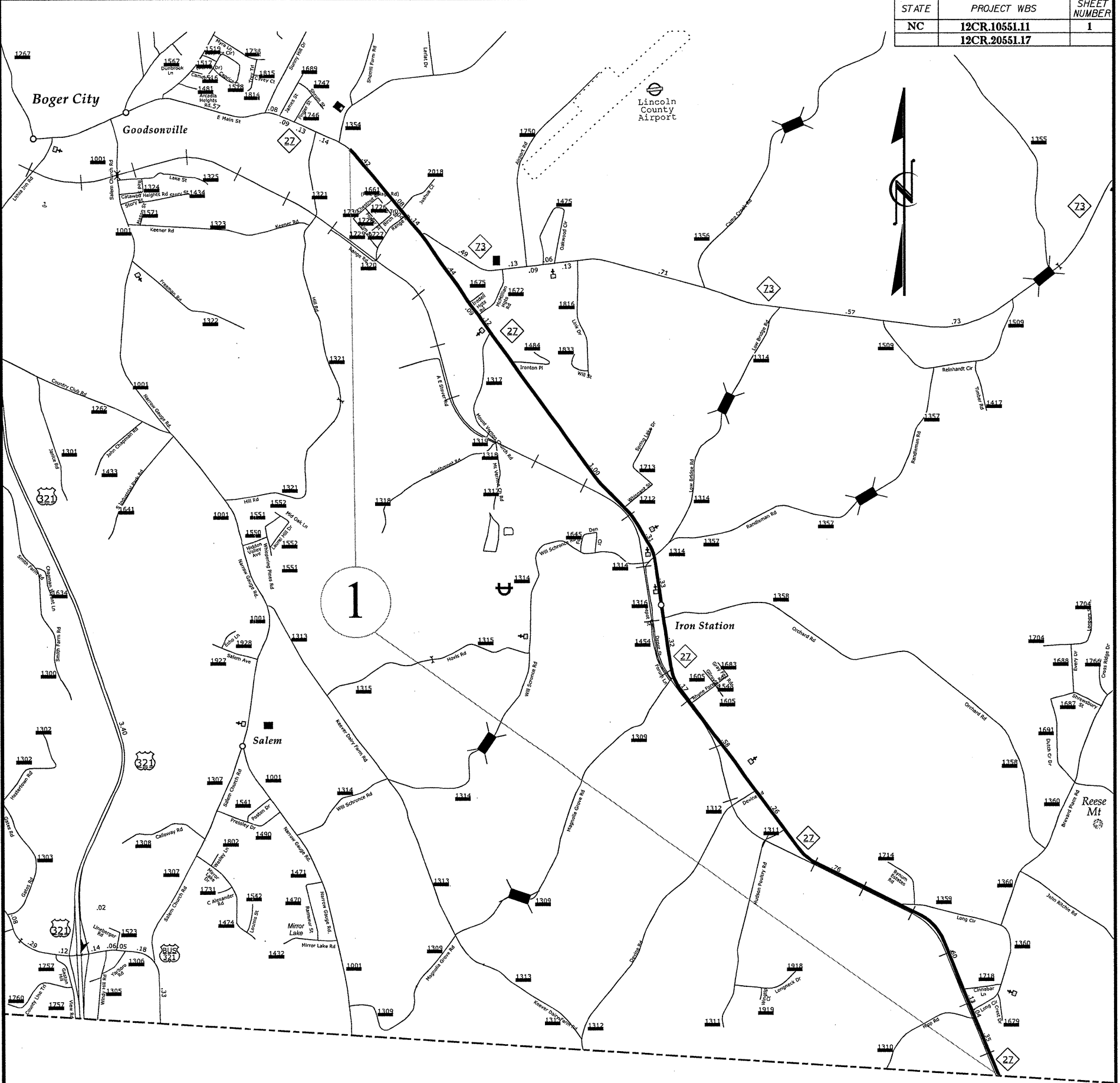


2013-2014 Resurfacing Map LINCOLN COUNTY NC

STATE	PROJECT WBS	SHEET NUMBER
NC	12CR.10551.11	1
	12CR.20551.17	



No Scale



No Scale

GASTON COUNTY

Drawn by: G. BRITAIN

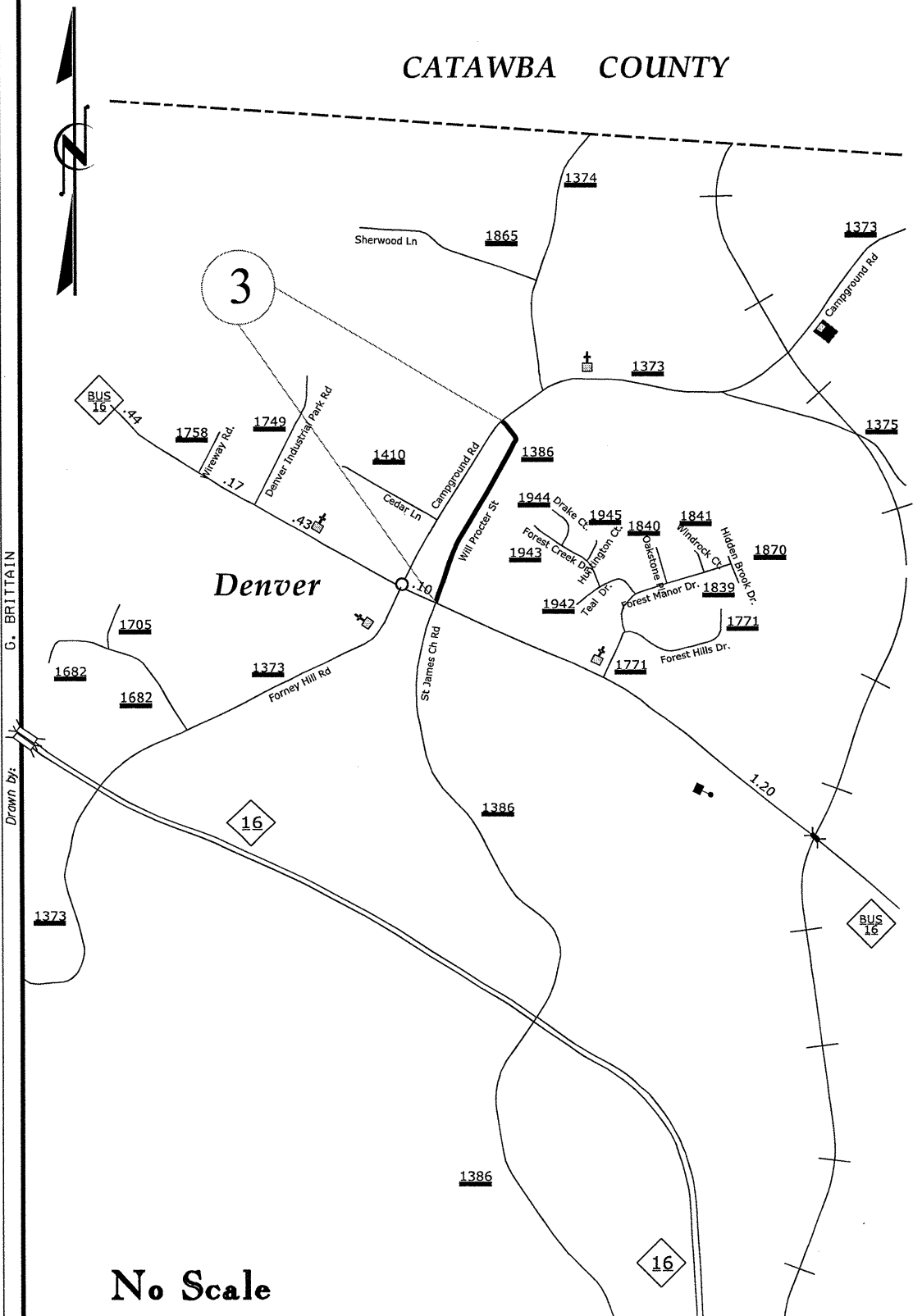
STATE	PROJECT WBS	SHEET NUMBER
NC	12CR.20551.17	2

2013-2014

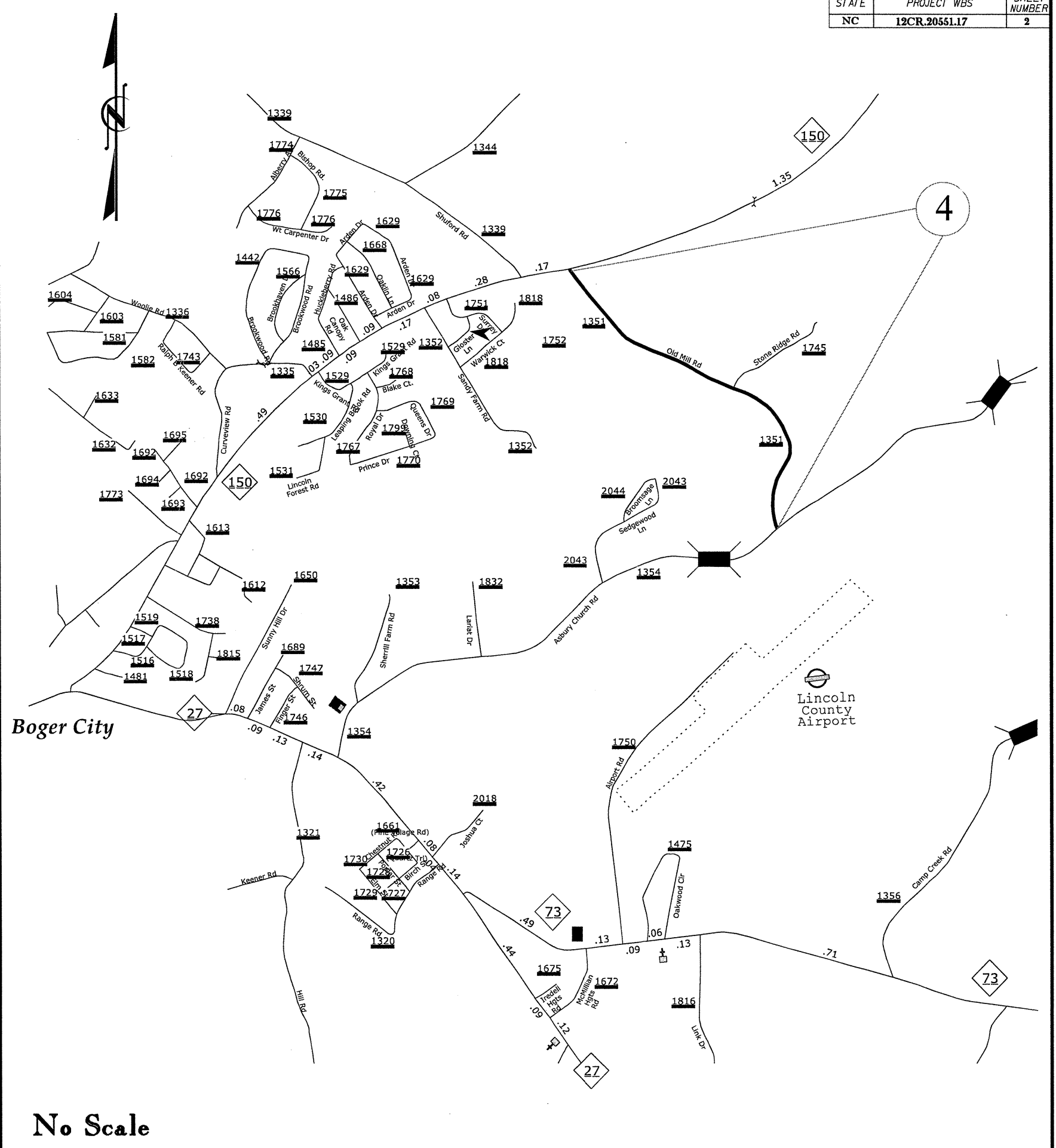
Resurfacing Map

LINCOLN COUNTY NC

CATAWBA COUNTY



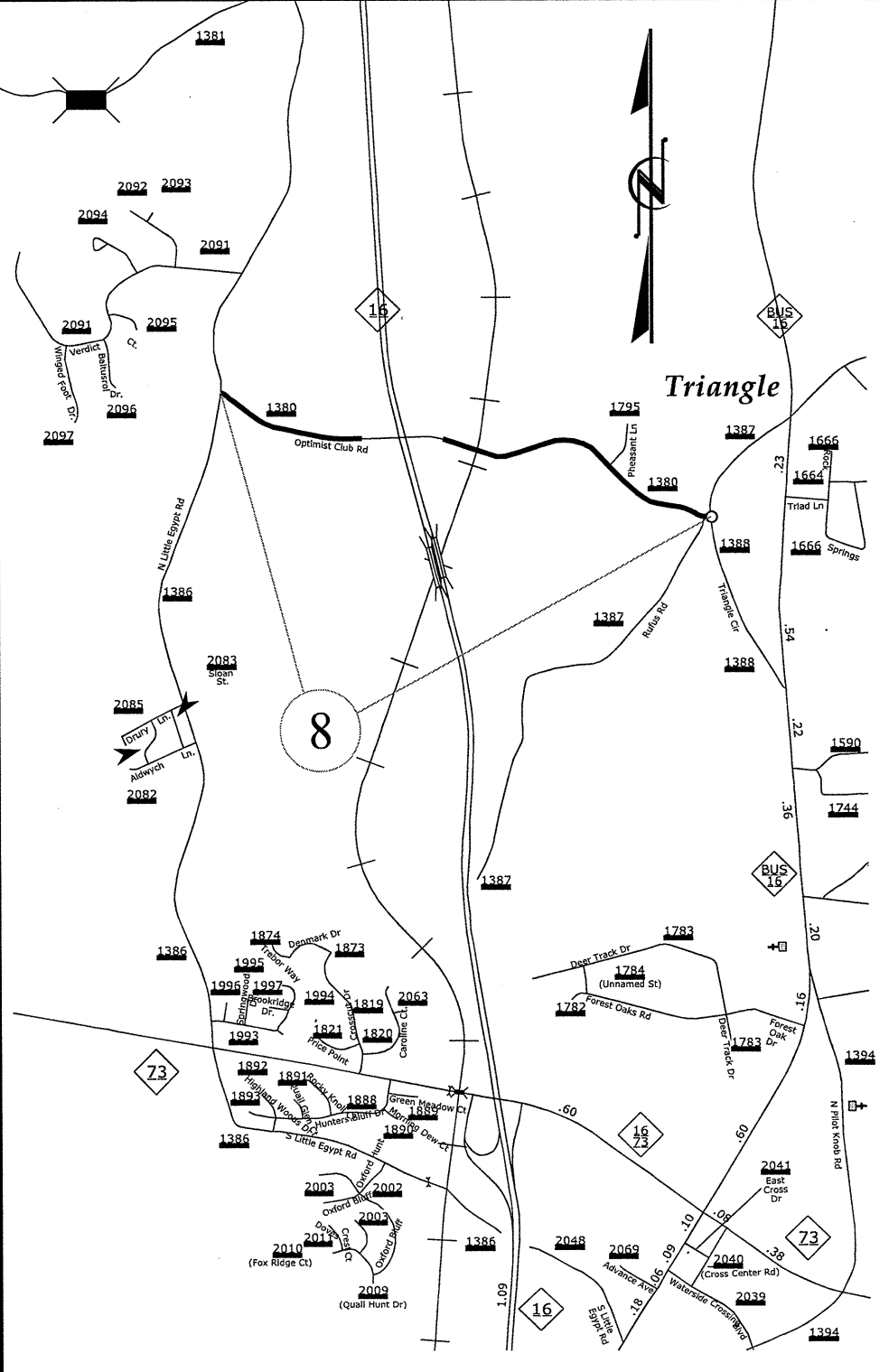
No Scale



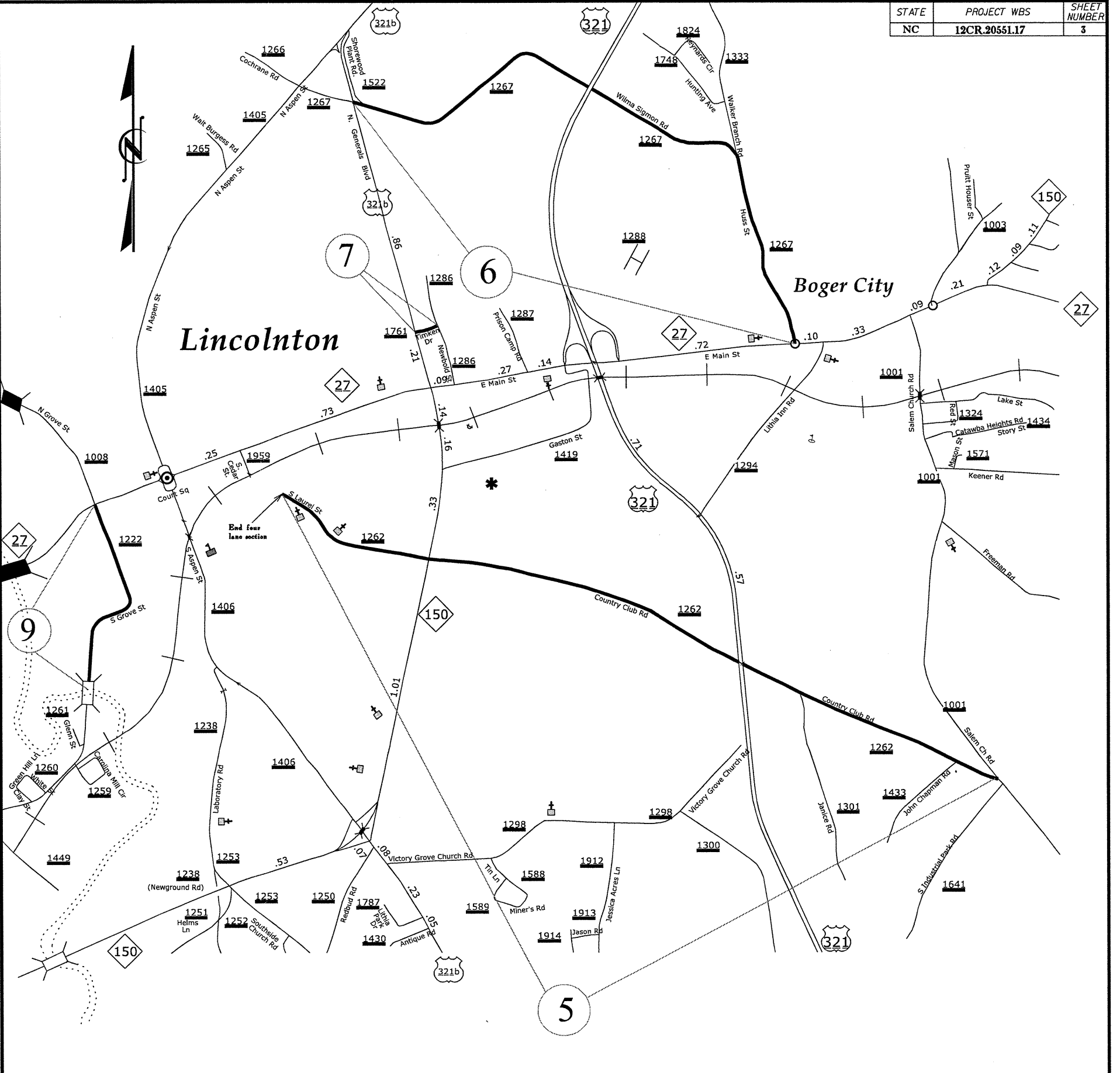
No Scale

2013-2014 Resurfacing Map LINCOLN COUNTY NC

STATE	PROJECT WBS	SHEET NUMBER
NC	12CR.20551.17	3



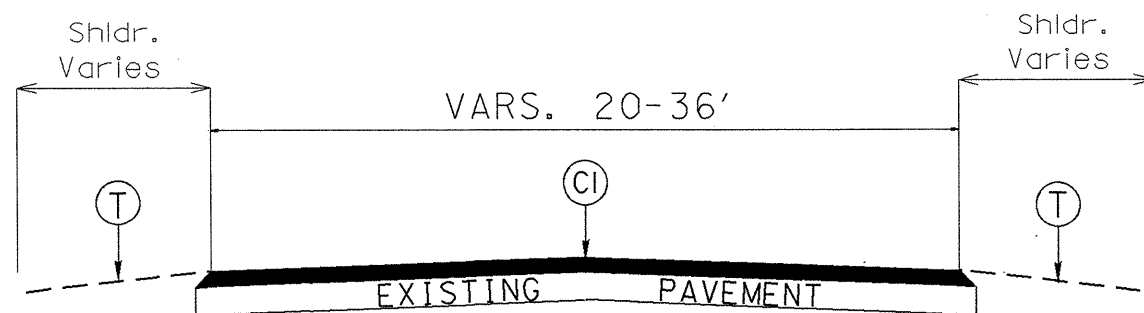
No Scale



No Scale

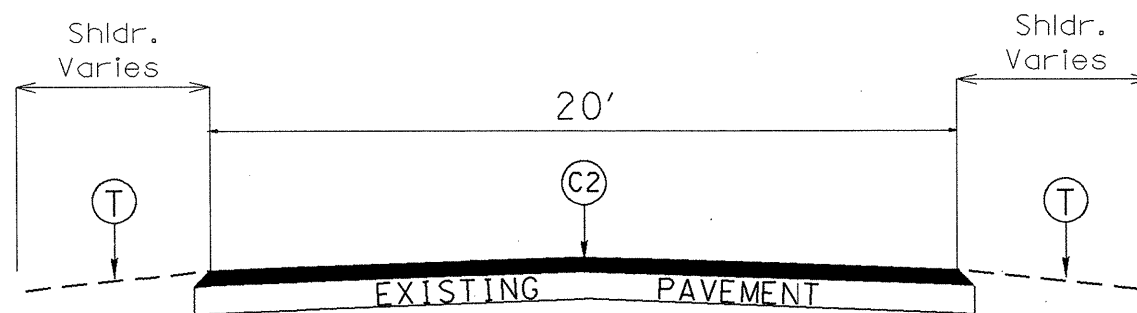
G. BRITAIN

Drawn by:



TYPICAL SECTION NO. 1

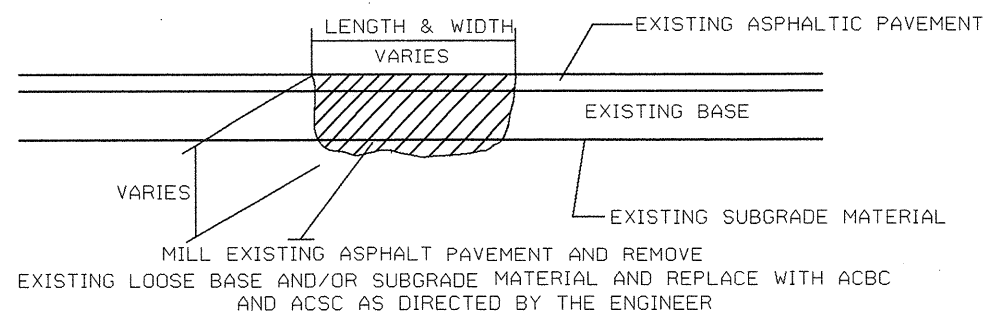
MAP # 1, MAP #4,
MAP # 6, MAP # 7



TYPICAL SECTION NO. 2

MAP # 2, MAP #9

DETAIL A
PATCHING EXISTING PAVEMENT



2012 ROADWAY ENGLISH STANDARD DRAWINGS

The following Roadway Standards as appear in "Roadway Standard Drawings" Highway Design Branch - N. C. Department of Transportation - Raleigh, N. C., Dated January, 2012 are applicable to this project and by reference hereby are considered a part of these plans:

STD. NO.	TITLE
DIVISION 5 - INCIDENTALS	
848.08	Curb Ramp - Proposed Curb & Gutter
848.09	Curb Ramp - Existing Curb & Gutter

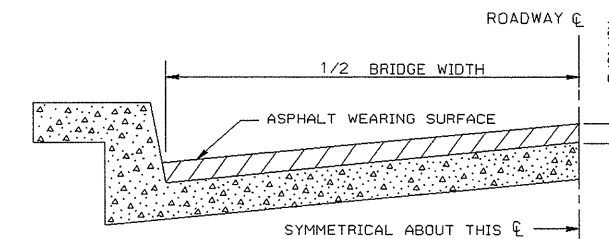
General Notes:

- * Pavement edge slopes are 1:1 unless specified otherwise.
- * Mill bridge approaches 100' to provide a smooth transition or as directed by the Engineer.

PAVEMENT SCHEDULE

C1	PROP. APPROX. 1½" ASPHALT CONCRETE SURFACE COURSE, TYPE S9.5B, AT AN AVERAGE RATE OF 168 LBS. PER SQ. YD.
C2	PROP. APPROX. 1.0" ASPHALT CONCRETE SURFACE COURSE, TYPE SF 9.5A, AT AN AVERAGE RATE OF 110 LBS. PER SQ. YD.
E	PROP. APPROX. 8" OF ASPHALT BASE COURSE, TYPE B 25.0B, AT AN AVERAGE RATE OF 456 LBS PER SQ. YD. IN EACH OF TWO LIFTS
T	AGGREGATE SHOULDER BORROW (SHOULDER RECONSTRUCTION)
Y1	PROP. APPROX. 0 - 1.5" OF INCIDENTAL MILLING
Z	MILL ASPHALT PAVEMENT APPROX. 3.0" IN DEPTH

DETAIL B
BRIDGE HALF TYPICAL SECTION



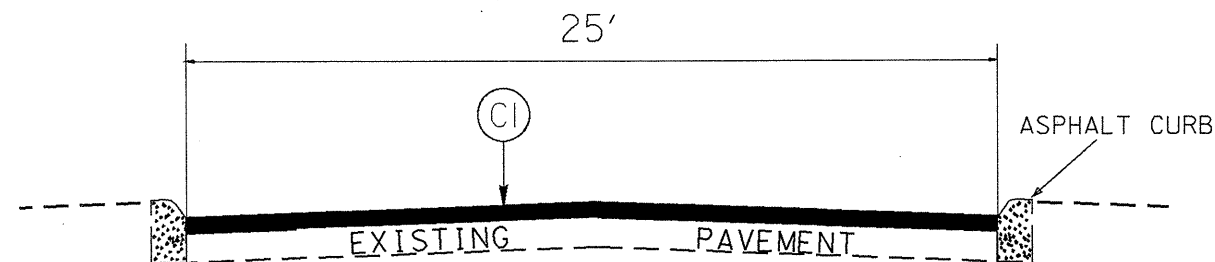
FOR BRIDGES WITH FLOOR DRAINS, CARE SHALL BE EXERCISED IN PLACING THE WEARING SURFACE AROUND FLOOR DRAINS SO AS NOT TO HINDER EFFECTIVE DRAINAGE. ALL DRAINS SHALL BE LEFT OPEN.

THE PROPOSED WEARING SURFACE SHALL VARY IN THICKNESS AS NECESSARY TO PROVIDE A SMOOTH RIDING SURFACE. A THICKNESS OF NOT LESS THAN 5/8" SHALL BE PROVIDED. THE MAXIMUM THICKNESS SHALL PREFERABLY BE 1-1/2" UNLESS IT IS IMPRACTICAL TO PROVIDE A SMOOTH RIDING SURFACE OTHERWISE.

NOTES

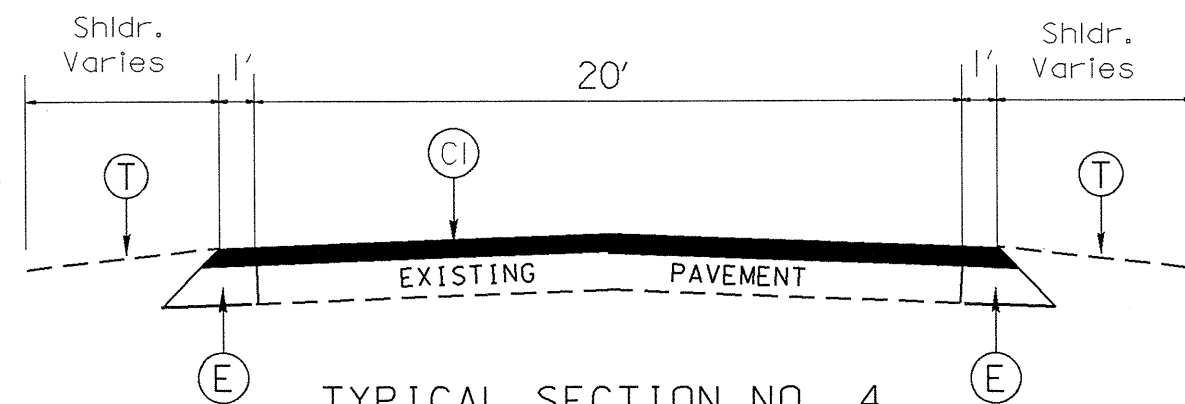
ALL UNPAVED S.R. ROADS TO BE SURFACED 50' FROM EDGE OF PAVEMENT OF MAIN PROJECT.
ALL PAVED S.R. ROADS TO BE RESURFACED TO THE ENDS OF THE RADII, OR AS DIRECTED BY THE ENGINEER.
EDGES, PAVEMENT WIDENING, INTERSECTIONS AND BRIDGE FLARES ARE INCLUDED IN THE TABLE OF QUANTITIES.
SHOULDERS AND DITCHES ARE TO BE CONSTRUCTED BY OTHERS UNLESS OTHERWISE NOTED.
BRIDGES TO BE RESURFACED AT LOCATIONS AND TO DEPTH AS DIRECTED BY THE ENGINEER.

2013 - 2014
Resurfacing Program
Typical Sections
Lincoln County NC



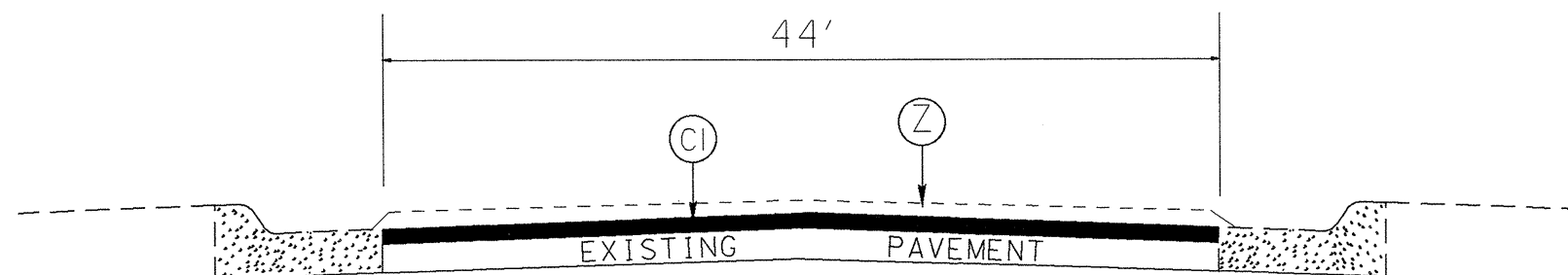
TYPICAL SECTION NO. 3

Map # 3



TYPICAL SECTION NO. 4

Map # 8

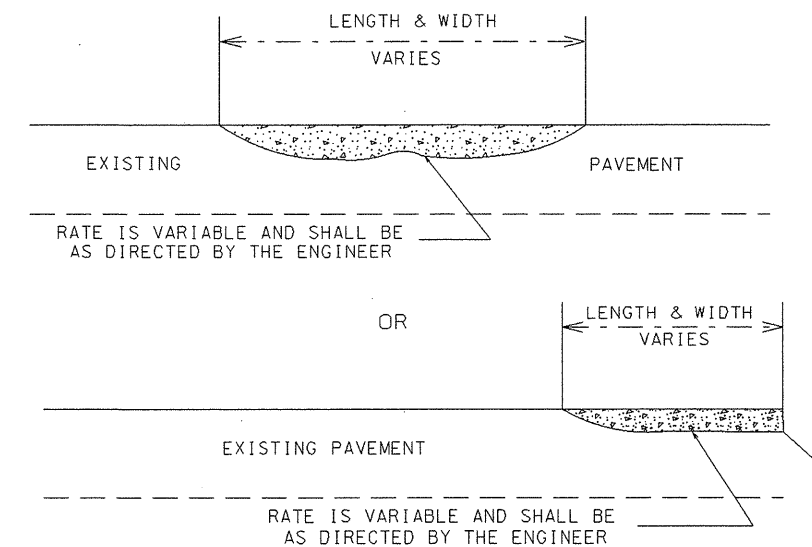


TYPICAL SECTION NO. 5

MAP # 5 - 0+00 TO 32+75

DETAIL C

ASPHALT CONCRETE SURFACE COURSE
TYPE S9.5B. (LEVELING COURSE)



PAVEMENT SCHEDULE	
C1	PROP. APPROX. 1½" ASPHALT CONCRETE SURFACE COURSE, TYPE S9.5B, AT AN AVERAGE RATE OF 168 LBS. PER SQ. YD.
C2	PROP. APPROX. 1.0" ASPHALT CONCRETE SURFACE COURSE, TYPE SF 9.5A, AT AN AVERAGE RATE OF 110 LBS. PER SQ. YD.
E	PROP. APPROX. 8" OF ASPHALT BASE COURSE, TYPE B 25.0B, AT AN AVERAGE RATE OF 456 LBS PER SQ. YD. IN EACH OF TWO LIFTS
T	AGGREGATE SHOULDER BORROW (SHOULDER RECONSTRUCTION)
Y1	PROP. APPROX. 0 - 1.5" OF INCIDENTAL MILLING
Z	MILL ASPHALT PAVEMENT APPROX. 3.0" IN DEPTH

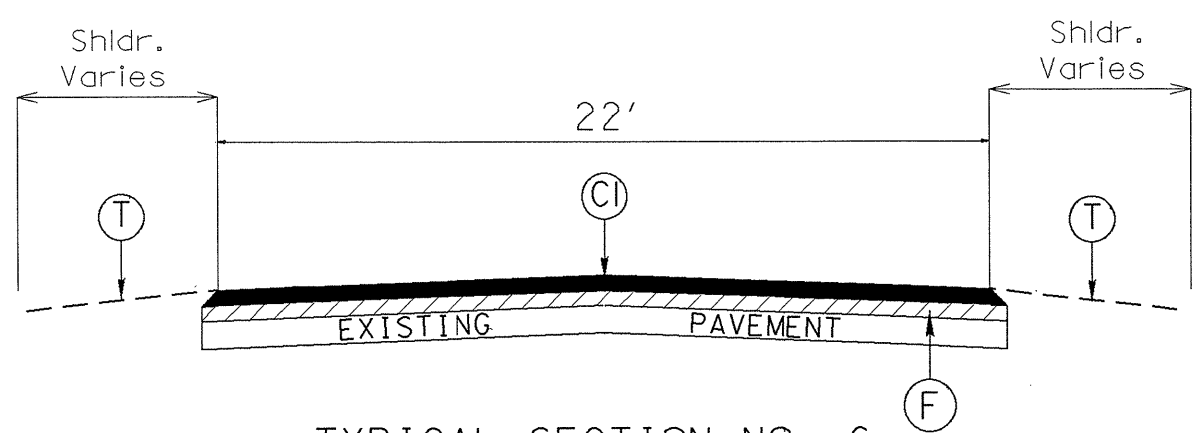
General Notes:

- * Pavement edge slopes are 1:1 unless specified otherwise.
- * Mill bridge approaches 100' to provide a smooth transition or as directed by the Engineer.

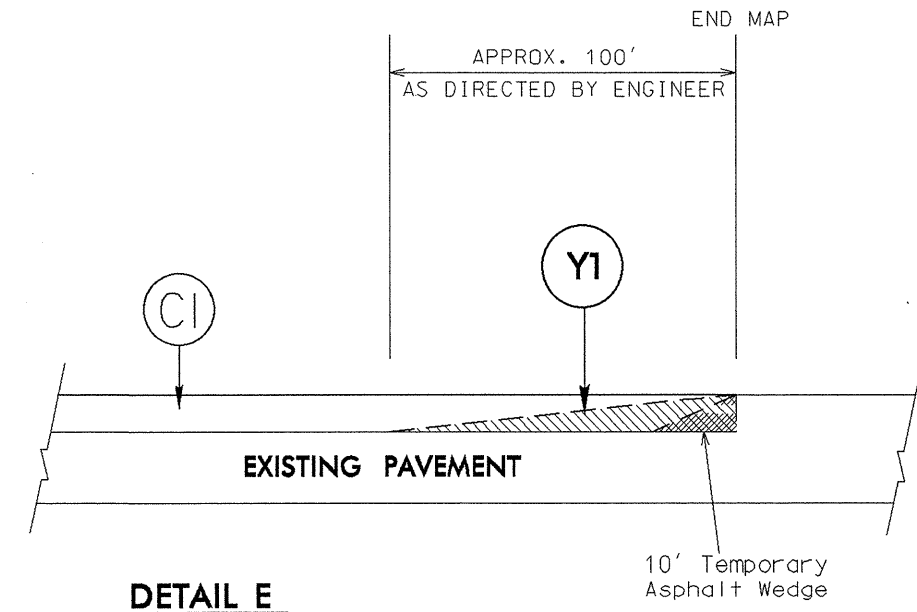
2013 - 2014
Resurfacing Program
Typical Sections
Lincoln County NC

Checked by:

Drawn by: G. Brittain

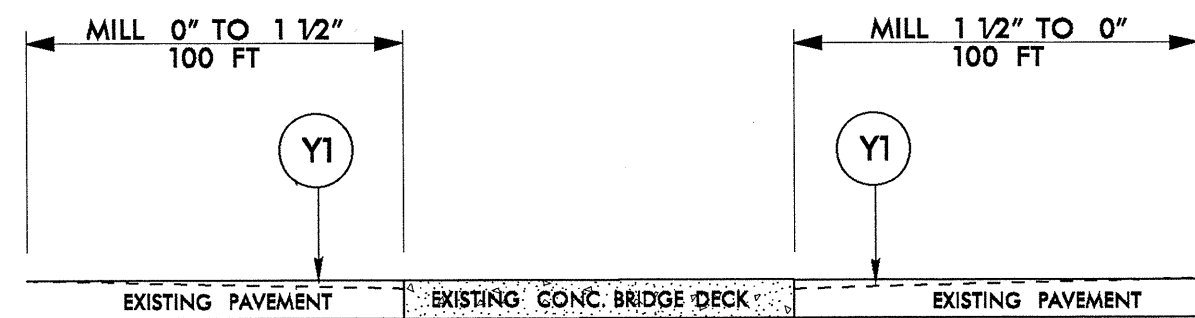


TYPICAL SECTION NO. 6
 MAP #5 - 32+75-151+00



DETAIL E
TIE-IN MILLING DETAIL

DETAIL D
MILLING BRIDGE APPROACHES



Map # 2 - Bridge # 39- MILL N. APPROACH
 Map # 6 - Bridge # 266 - MILL BOTH APPROACHES
 Map # 9 - Bridge # 61- MILL N. APPROACH

PAVEMENT SCHEDULE	
C1	PROP. APPROX. 1 1/2" ASPHALT CONCRETE SURFACE COURSE, TYPE S9.5B, AT AN AVERAGE RATE OF 168 LBS. PER SQ. YD.
C2	PROP. APPROX. 1.0" ASPHALT CONCRETE SURFACE COURSE, TYPE SF 9.5A, AT AN AVERAGE RATE OF 110 LBS. PER SQ. YD.
E	PROP. APPROX. 8" OF ASPHALT BASE COURSE, TYPE B 25.0B, AT AN AVERAGE RATE OF 456 LBS PER SQ. YD. IN EACH OF TWO LIFTS
T	AGGREGATE SHOULDER BORROW (SHOULDER RECONSTRUCTION)
Y1	PROP. APPROX. 0 - 1.5" OF INCIDENTAL MILLING
Z	MILL ASPHALT PAVEMENT APPROX. 3.0" IN DEPTH
F	ASPHALT SURFACE TREATMENT (AST) MATCOAT #6M

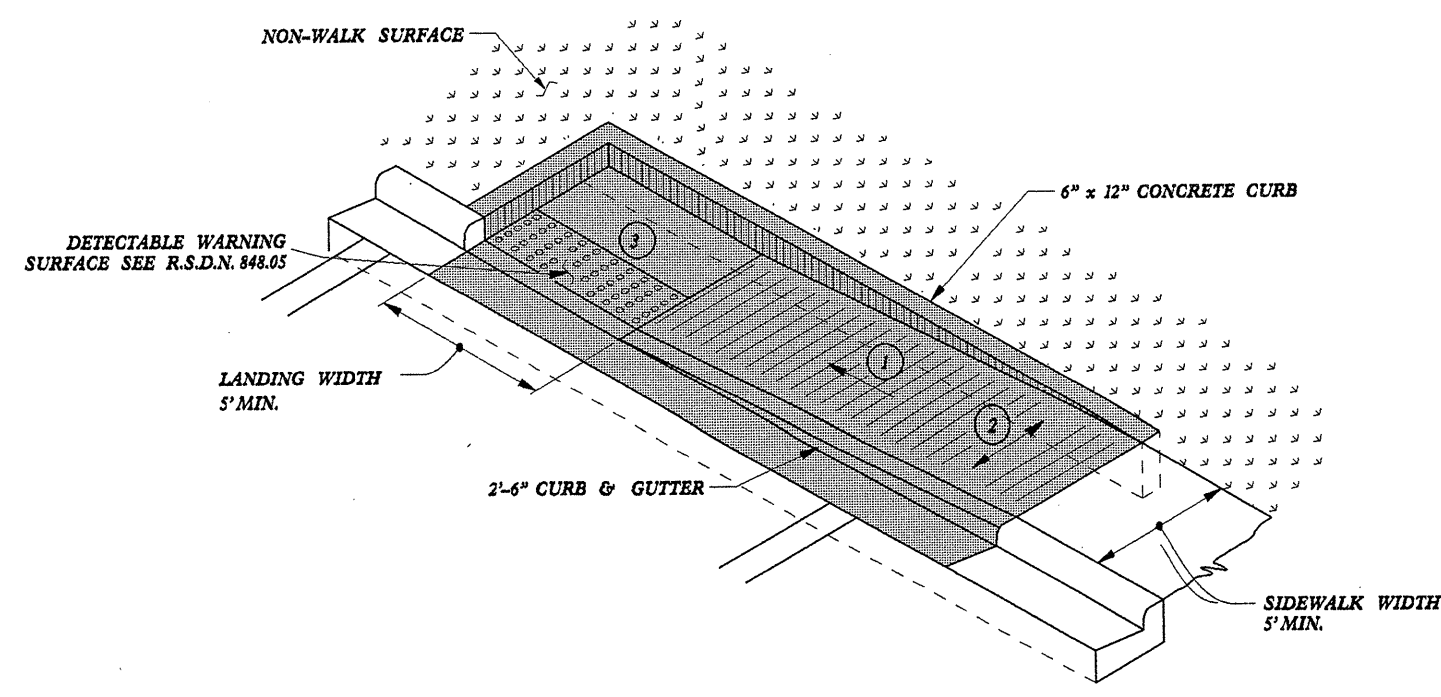
General Notes:

- * Pavement edge slopes are 1:1 unless specified otherwise.
- * Mill bridge approaches 100' to provide a smooth transition or as directed by the Engineer.

2013 - 2014
 Resurfacing Program
 Typical Sections
 Lincoln County NC

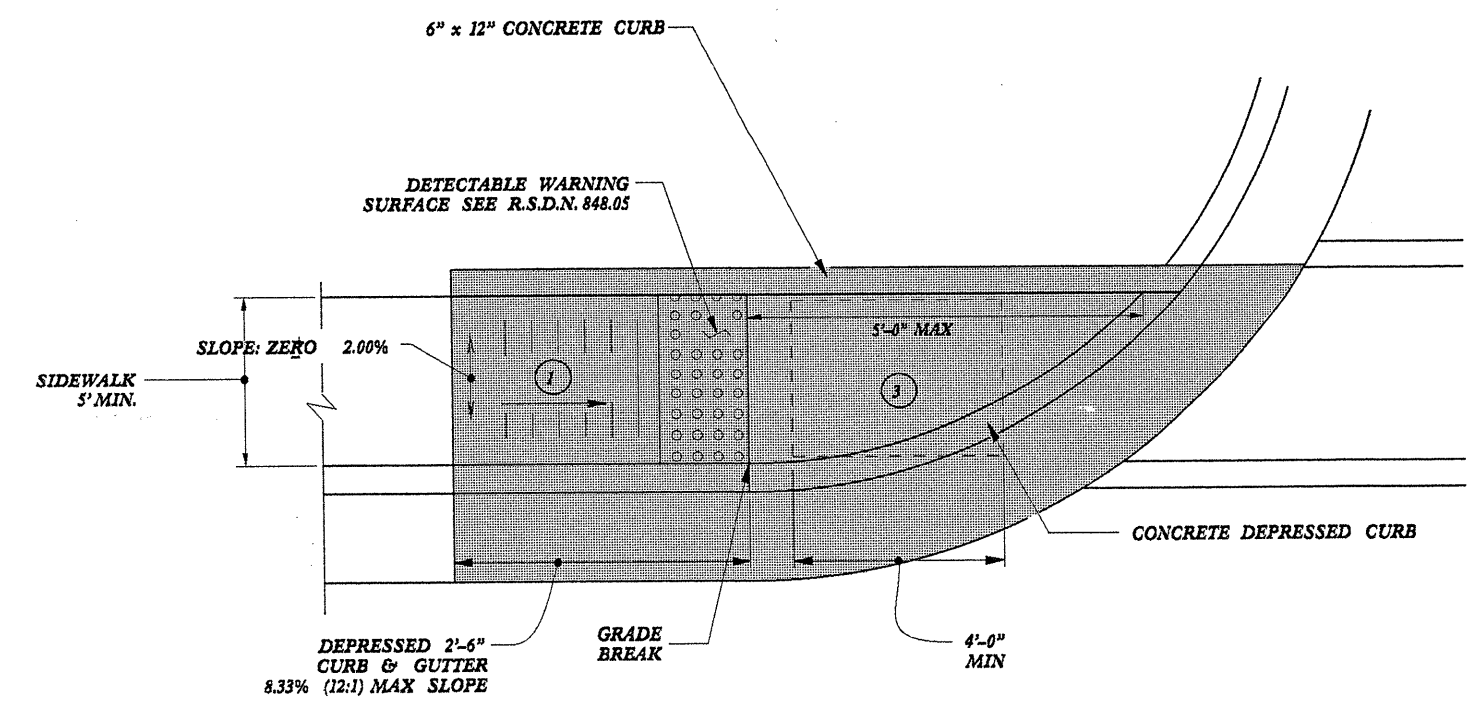
Checked By: _____
 Drawn by: G. Briffain

5/14/99
22-MAR-2012 15:06
S:\Contracts\Special Details\Howerton\Standard Drawings\2012 Curb Ramp Special Details\Curb Ramp Details.dgn
J.Howerton AT 05023758



TYPE 1A

PAY LIMITS FOR CURB RAMP



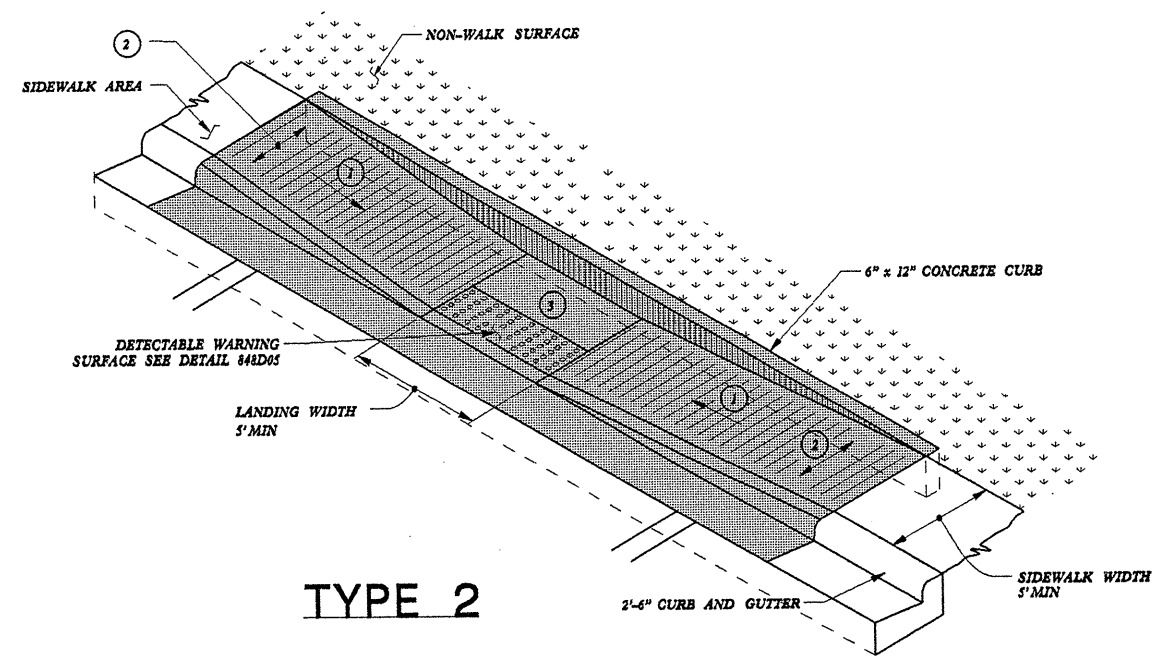
TYPE 1

- 1 8.33% (12:1) MAX RAMP SLOPE
- 2 CROSS SLOPE: 2.00%
- 3 CURB RAMPS REQUIRE A (4'-0") MINIMUM LANDING WITH A MAXIMUM CROSS SLOPE AND LONGITUDINAL SLOPE OF 2.00% WHERE PEDESTRIANS PERFORM TURNING MANEUVERS. SLOPE TO DRAIN TO CURB.

REFER TO ROADWAY STANDARD DRAWING NUMBER 848.05 SHEET 3 OF 3 FOR ALL RAMP NOTES

CONTRACT STANDARDS AND DEVELOPMENT UNIT	
Office 818-707-6950	FAX 818-250-4119
CURB RAMPS	
Directional Ramps	
ORIGINAL BY: J.S. HOWERTON	DATE: 7/7/11
MODIFIED BY:	DATE:
CHECKED BY:	DATE:
FILE SPEC: s:\ds\2012CurbRamp\CurbRampDetails.dgn	

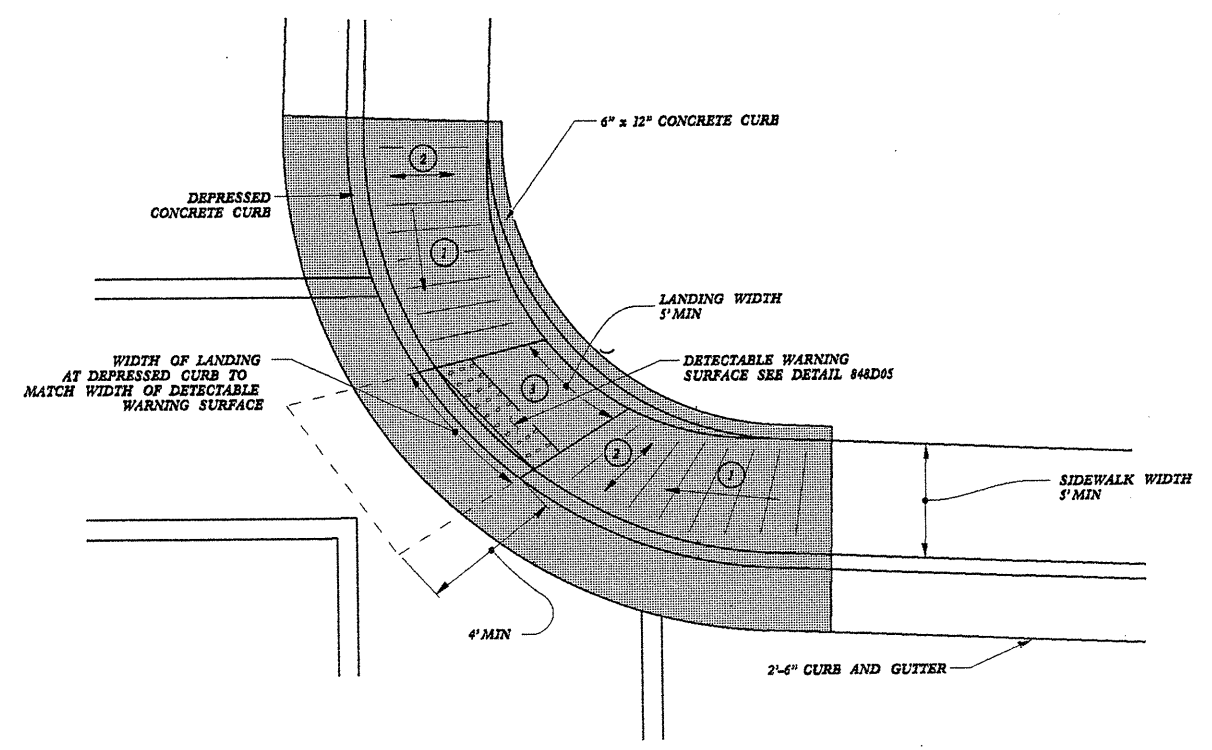
22-MAR-2012 15:07
 S:\Contracts\Contractors\Special Details\2012 Curb Ramp Special Details\Curb Ramp Details.dgn
 Jhowerton AT CS023750



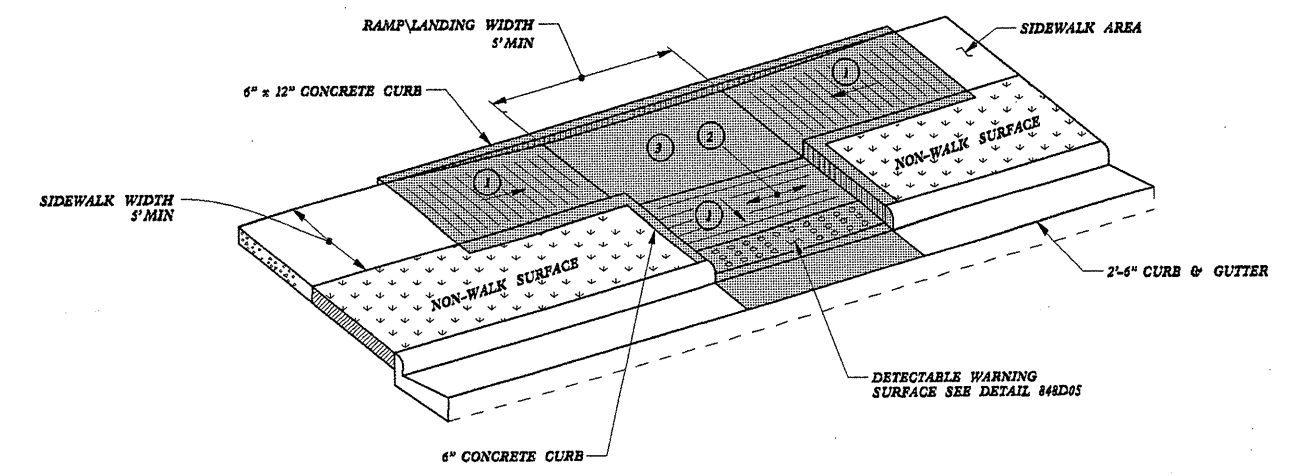
TYPE 2

- ① 8.33% (12:1) MAX RAMP SLOPE
- ② CROSS SLOPE: 2.00%
- ③ CURB RAMP REQUIRE A (4'-0") MINIMUM LANDING WITH A MAXIMUM CROSS SLOPE AND LONGITUDINAL SLOPE OF 2.00% WHERE PEDESTRIANS PERFORM TURNING MANEUVERS. SLOPE TO DRAIN TO CURB.

PAY LIMITS FOR CURB RAMP



TYPE 2A

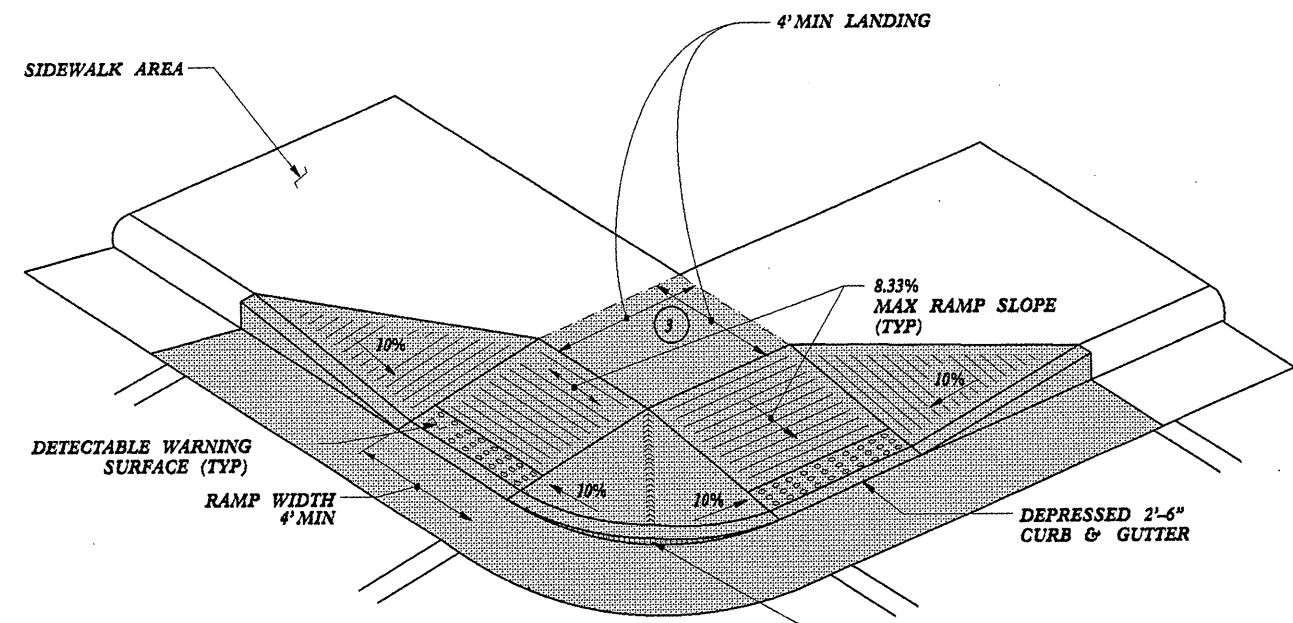


TYPE 3

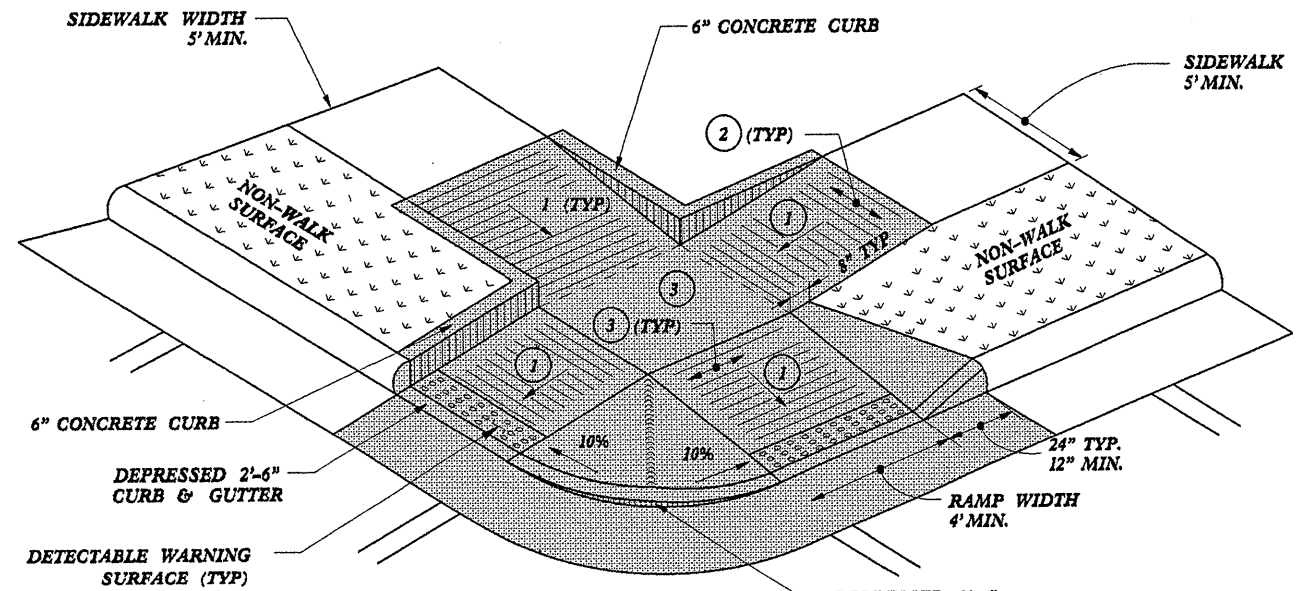
CONTRACT STANDARDS AND DEVELOPMENT UNIT Office 919-707-8850 FAX 919-250-4119	
CURB RAMPS Parallel Ramps	
ORIGINAL BY: J.S. HOWERTON	DATE: 7/7/11
MODIFIED BY:	DATE:
CHECKED BY:	DATE:
FILE SPEC: stds/2012CurbRamp/CurbRampDetails.dgn	

REFER TO ROADWAY STANDARD DRAWING NUMBER 848.05 SHEET 3 OF 3 FOR ALL RAMP NOTES

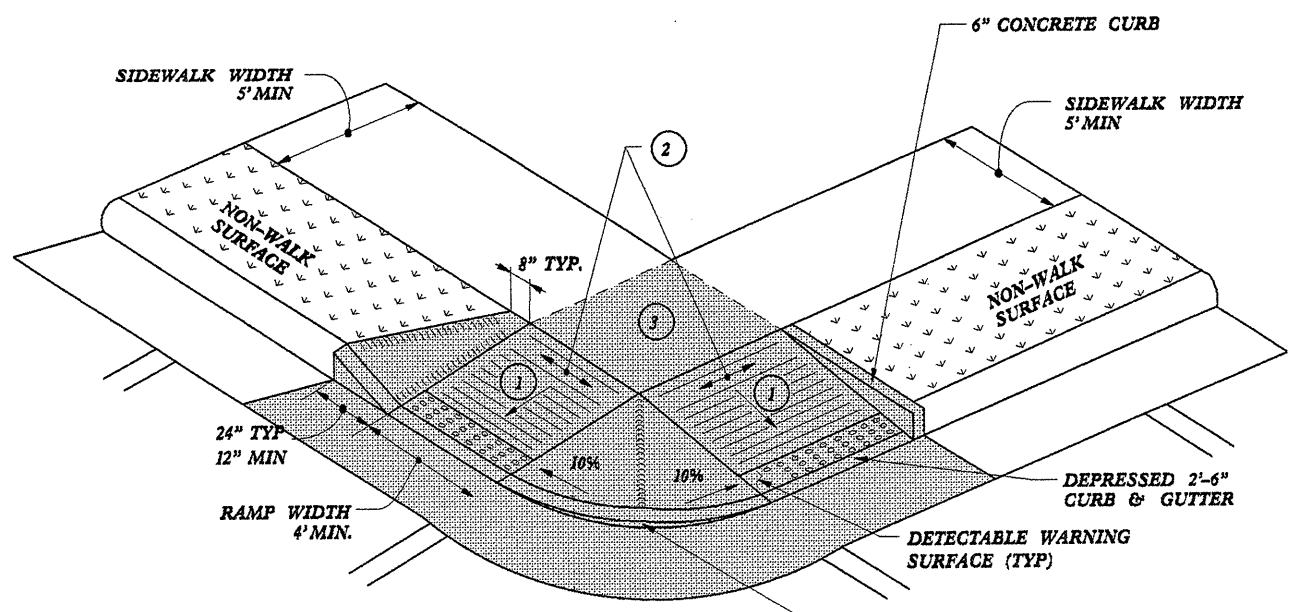
5/14/99
 22-MAR-2012 15:08
 S:\Contracts\Special Details\Standard Drawings\2012 Curb Ramp Special Details\Curb Ramp Details.dgn
 Jhowerton
 AT CS0237581



TYPE 4



TYPE 5



TYPE 4A

- 1 8.33% (12:1) MAX RAMP SLOPE
- 2 CROSS SLOPE: 2.00%
- 3 CURB RAMPS REQUIRE A (4'-0") MINIMUM LANDING WITH A MAXIMUM CROSS SLOPE AND LONGITUDINAL SLOPE OF 2.00% WHERE PEDESTRIANS PERFORM TURNING MANEUVERS. SLOPE TO DRAIN TO CURB.

CONTRACT STANDARDS AND DEVELOPMENT UNIT
 Office 919-707-6850 FAX 919-250-4119

CURB RAMPS
 Shared Landing

ORIGINAL BY: J.S. HOWERTON DATE: 7/7/11
 MODIFIED BY: _____ DATE: _____
 CHECKED BY: _____ DATE: _____
 FILE SPEC: srgs/2012CurbRamp/CurbRampDetails.dgn

REFER TO ROADWAY STANDARD DRAWING NUMBER 848.05 SHEET 3 OF 3 FOR ALL RAMP NOTES

PROJECT NO.	SHEET NO.	TOTAL NO.
12CR.10551.11	11	12
12CR.20551.17		

SUMMARY OF QUANTITIES

PROJECT NO	COUNTY	MAP NO	ROUTE	DESCRIPTION	TYP NO	LANES	FINAL SURFACE TESTING REQUIRED	WARM MIX ASPHALT REQUIRED	LENGTH MI	WIDTH FT	AGGREGATE SHOULDER BORROW TON	INCIDENTAL STONE BASE TONS	SHOULDER RECONSTRUCTION SMI	3" MILLING SY	INCIDENTAL MILLING SY	AST MATCOAT #6M SY	BASE COURSE, B 25.0B TONS	SURFACE COURSE SF9.5A TONS	SURFACE COURSE, S9.5B TONS	LEVELING COURSE, S9.5B TONS	ASPHALT BINDER FOR PLANT MIX TONS	PATCHING EXISTING PAVEMENT TONS	CONCRETE CURB RAMP EA	MANHOLE ADJUSTMENT EA	METER OR VALVE BOX ADJUSTMENT EA
12cr.10551.11	Lincoln	1	NC 27 EAST	FROM SR 1354 TO GASTON CO.	1	2	NO	NO	6.40	24-36	640	140	12.80		250				8,901	500	567	1,500			
TOTAL FOR PROJ NO. 12cr.10551.11									6.40		640	140	12.80		250				8,901	500	567	1,500			
12cr.20551.17	Lincoln	2	SR 1383 (INGLESIDE FARM RD)	FROM NC 73 TO SR 1360	2	2	NO	NO	3.37	20	255	125	6.74		475			2,768		600	224	650			
12cr.20551.17	Lincoln	3	SR 1386 (WILL PROCTOR ST)	FROM NC 16 TO SR 1373	3	2	NO	NO	0.50	25		40			250				681	100	47	140		11	
12cr.20551.17	Lincoln	4	SR 1351 (OLD MILL)	FROM SR 1354 TO NC 150	1	2	NO	NO	1.35	20	125	25	2.70		250				1,429	350	108	400			
12cr.20551.17	Lincoln	5	SR 1262 (COUNTRY CLUB)	FROM SR 1001 TO E. CONGRESS ST.	5,6	2	NO	NO	2.86	22-44	220	40	4.48	18,200	250	29,000			4,058	400	269	800	5	8	10
12cr.20551.17	Lincoln	6	SR 1267 (SIGMON RD \ HUSS ST)	FROM NC 27 TO US 321-B	1	2	NO	NO	2.33	21	240	60	4.66		725				2,560	250	170	650			2
12cr.20551.17	Lincoln	7	SR1761 (TIMKEN DR)	FROM US 321B TO SR 1286	1	2	NO	NO	0.08	24-36	10	5	0.16		250				123	10	8	25			
12cr.20551.17	Lincoln	8	SR 1380 (OPTIMIST CLUB RD)	FROM SR 1386 TO SR 1388 (EXCEPTING NEWER PAVED PORTION AT NC 16 BYPASS)	4	2	NO	NO	1.00	22	100	40	2.00		450		900		1,199	120	119	150			
12cr.20551.17	Lincoln	9	SR 1222 (S. GROVE ST.)	From NC 27 to River Bridge (B#61)	2	2	NO	NO	0.75	20	60	40	1.50		500				588	80	45	200		13	3
TOTAL FOR PROJ NO. 12cr.20551.17									12.24		1,010	375	22.24	18,200	3,150	29,000	900	3,356	10,050	1,910	990	3,015	5	32	15
GRAND TOTAL									18.64		1,650	515	35.04	18,200	3,400	29,000	900	3,356	18,951	2,410	1,557	4,515	5	32	15

PROJECT NO.	SHEET NO.	TOTAL NO.
12CR.10551.11	12	12
12CR.20551.17		

THERMOPLASTIC AND PAINT QUANTITIES

PROJECT NO	COUNTY	MAP NO	ROUTE	DESCRIPTION	TYP	LANES	LENGTH	WIDTH	4413000000-E	4457000000-N	4510000000-N	4685000000-E	4686000000-E			4710000000-E	4721000000-E			4725000000-E			4810000000-E		4905000000-N		
									WORK ZONE ADVANCE/GENERAL WARNING SIGNING SF	TEMPORARY TRAFFIC CONTROL LS	LAW ENFORCEMENT HR	4" X 90 M WHITE THERMO LF	4" X 120 M YELLOW THERMO LF	4" X 120 M WHITE THERMO LF	16" X 120 M WHITE THERMO LF	24" X 120 M WHITE THERMO LF	THERMO MSG SCHOOL 120 M EA	THERMO MSG R X R 120M EA	THERMO MSG ONLY 120 M EA	THERMO LT ARROW 90 M EA	THERMO RT ARROW 90 M EA	THERMO STR & RT ARROW 90 M EA	THERMO STR ARROW 90 M EA	4" WHITE PAINT LF	4" YELLOW PAINT LF	SNOW PLOWABLE MARKERS EA	
12cr.10551.11	Lincoln	1	NC 27 EAST	FROM SR 1354 TO GASTON CO.	1	2	6.40	24	741	1	83	67,750	65,000	1,200		160	12		EA	EA	EA	EA	EA		EA	475	
TOTAL FOR PROJ NO. 12cr.10551.11									741	1	83	67,750	65,000	1,200	160	12				7	6					475	
												66,200				12				13							
12cr.20551.17	Lincoln	2	SR 1383 (INGLESIDE FARM RD)	FROM NC 73 TO SR 1360	2	2	3.37	20	1,417	1	157															72,000	71,500
12cr.20551.17	Lincoln	3	SR 1386 (WILL PROCTOR ST)	FROM NC 16 TO SR 1373	3	2	0.50	25	*	*	*															10,500	
12cr.20551.17	Lincoln	4	SR 1351 (OLD MILL)	FROM SR 1354 TO NC 150	1	2	1.35	20	*	*	*														28,750	27,500	
12cr.20551.17	Lincoln	5	SR 1262 (COUNTRY CLUB)	FROM SR 1001 TO E. CONGRESS ST.	1	2	2.86	22	*	*	*	23,650	29,750	2,000		100			4	7		3	2				300
12cr.20551.17	Lincoln	6	SR 1267 (SIGMON RD \ HUSS ST)	FROM NC 27 TO US 321-B	1	2	2.33	21	*	*	*	24,650	26,250	400		30					3						175
12cr.20551.17	Lincoln	7	SR1761 (TIMKEN DR)	FROM US 321B TO SR 1286	1	2	0.08	23	*	*	*	850	840	150		30					2	2					
12cr.20551.17	Lincoln	8	SR 1380 (OPTIMIST CLUB RD)	FROM SR 1386 TO SR 1388 (EXCEPTING NEW PAVED PORTION AT NC 16 BYPASS)	4	2	1.00	22	*	*	*	10760	10500		100	50		4									75
12cr.20551.17	Lincoln	9	SR 1222 (S. GROVE ST)	From NC 27 to River Bridge	1	2	0.75	20	*	*	*					16									16,000	15,750	
TOTAL FOR PROJ NO. 12cr.20551.17									1,417	1	157	59,910	67,340	2,550	100	226		4	4	12	2	3	2	116,750	125,250	550	
												69,890				8				19				242,000			
GRAND TOTAL							18.64			2,158	1	240	127,660	132,340	3,750	100	386	12	4	4	19	8	3	2	116,750	125,250	1,025
												136,090				20			32			242,000					