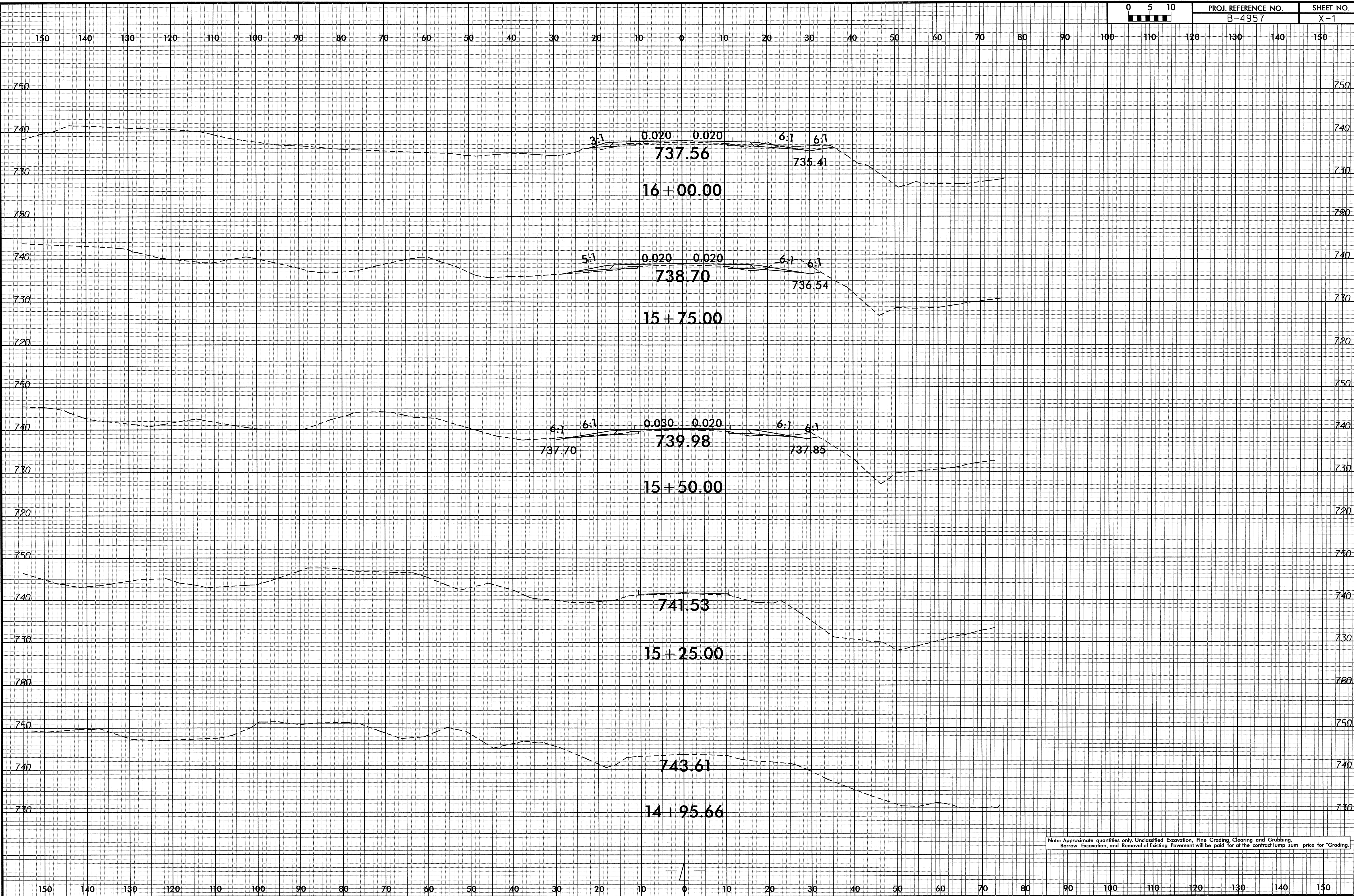


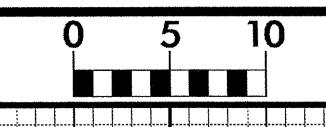
8/23/99



Note: Approximate quantities only. Unclassified Excavation, Fine Grading, Clearing and Grubbing, Borrow Excavation, and Removal of Existing Pavement will be paid for at the contract lump sum price for "Grading."

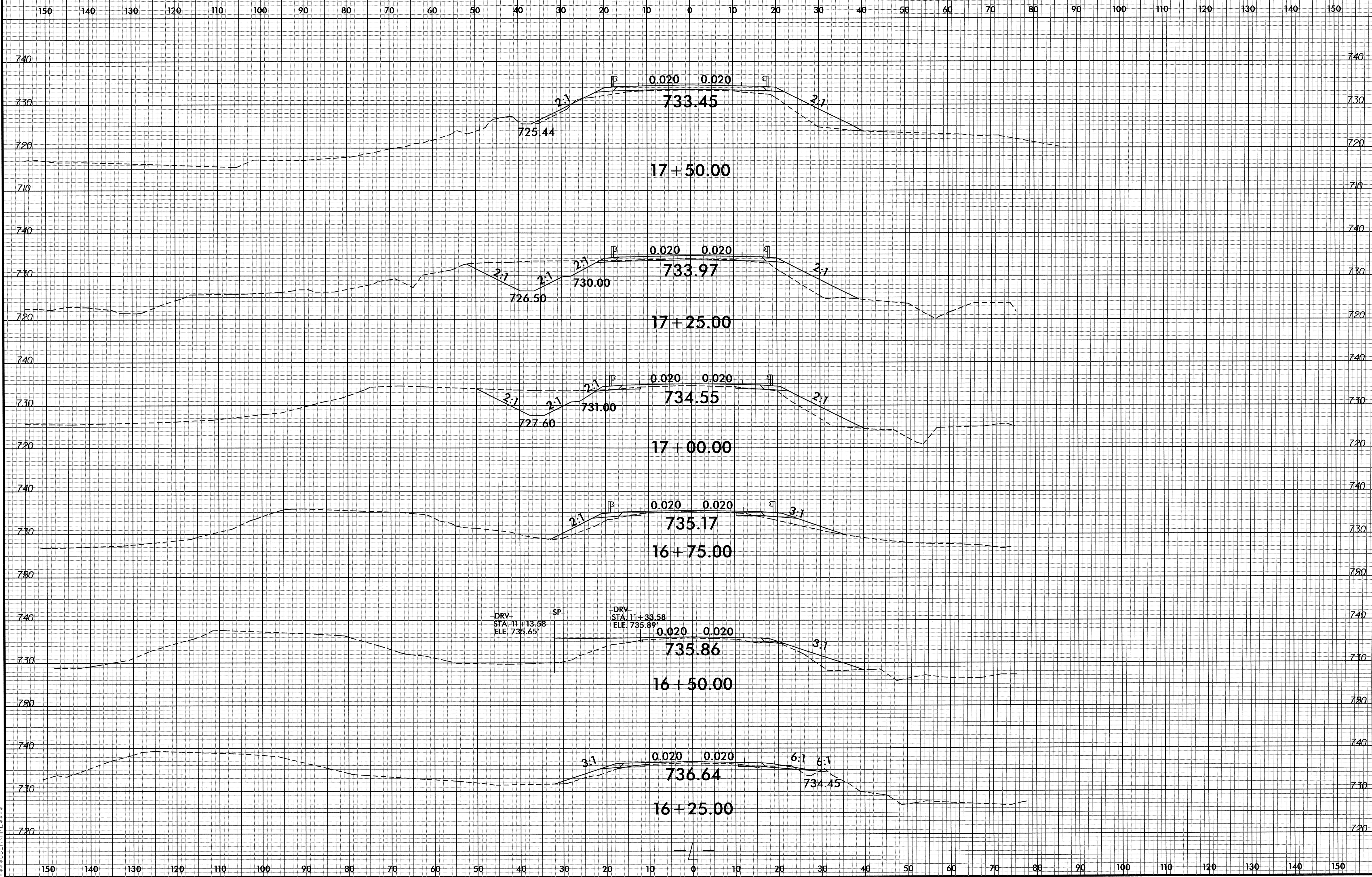
26-APR-2013 08:14
 P:\Roadway\XSC\B4957_Rdy-xpl.dgn
 \$\$\$SECRET\$\$\$

8/23/99



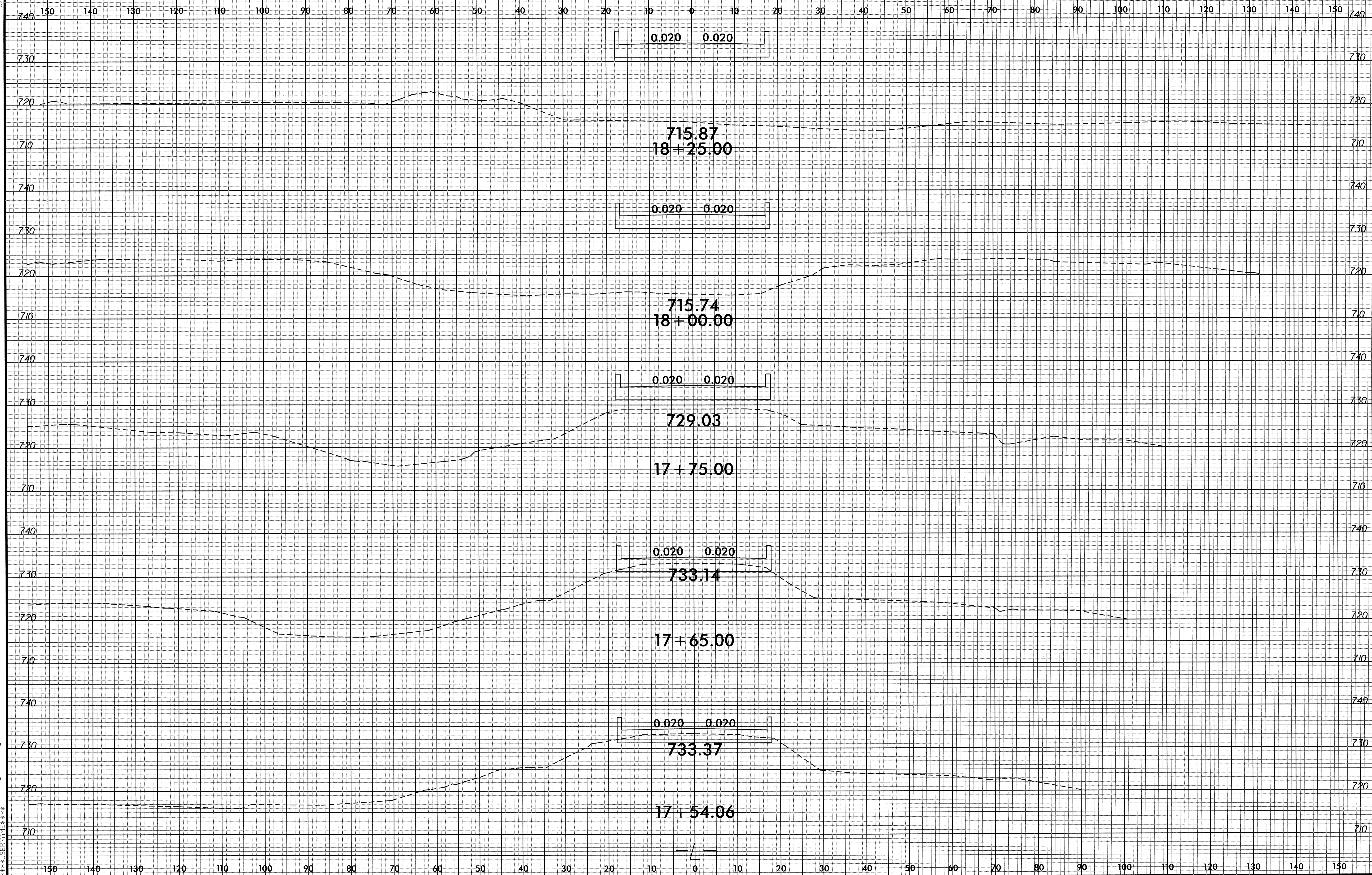
PROJ. REFERENCE NO.
B-4957

SHEET NO.
X-2



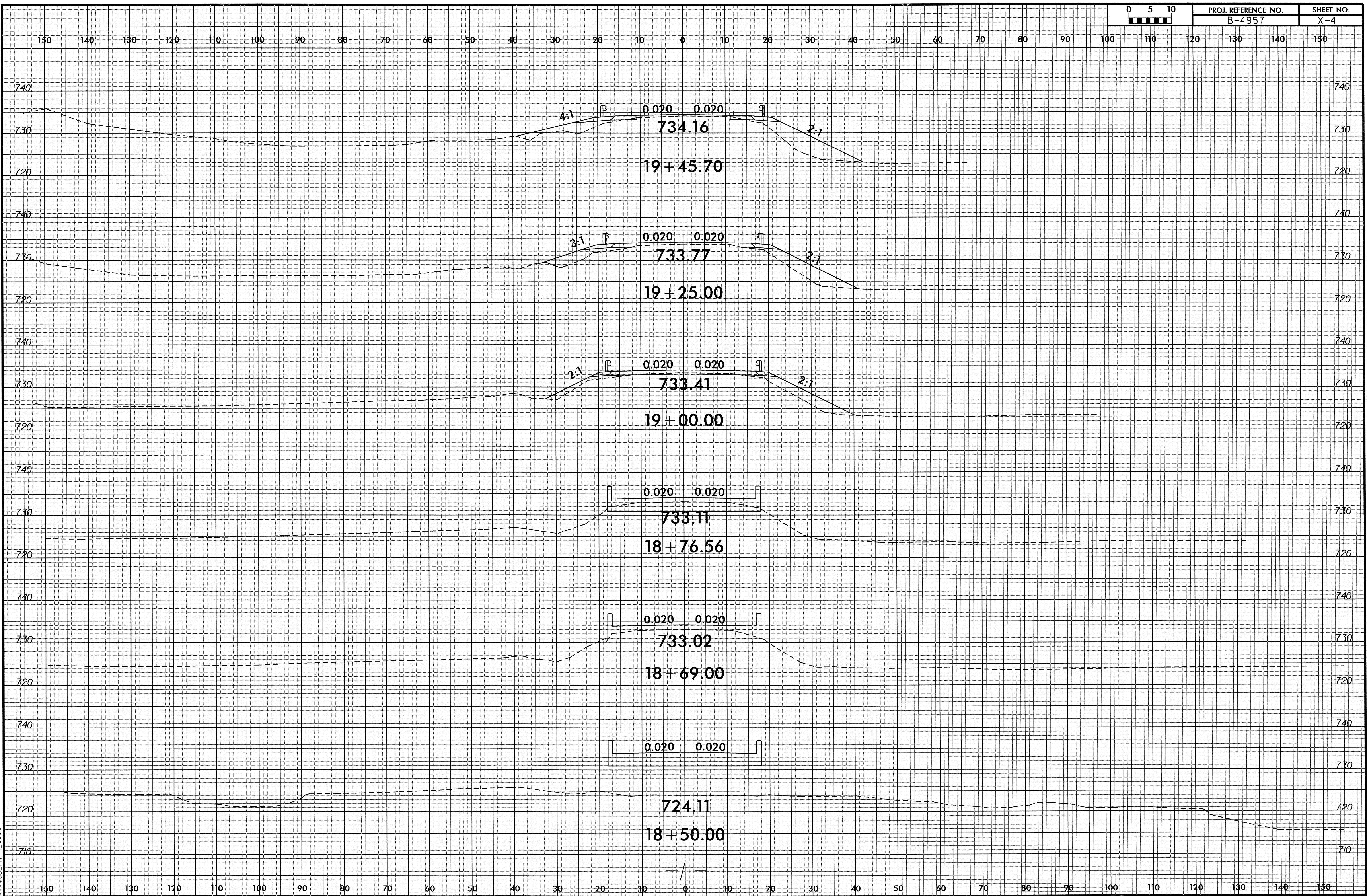
22-MAR-2005 14:32
C:\PAPERS\5016\B4957_Rdy_xpl.L.dgn

8/23/99



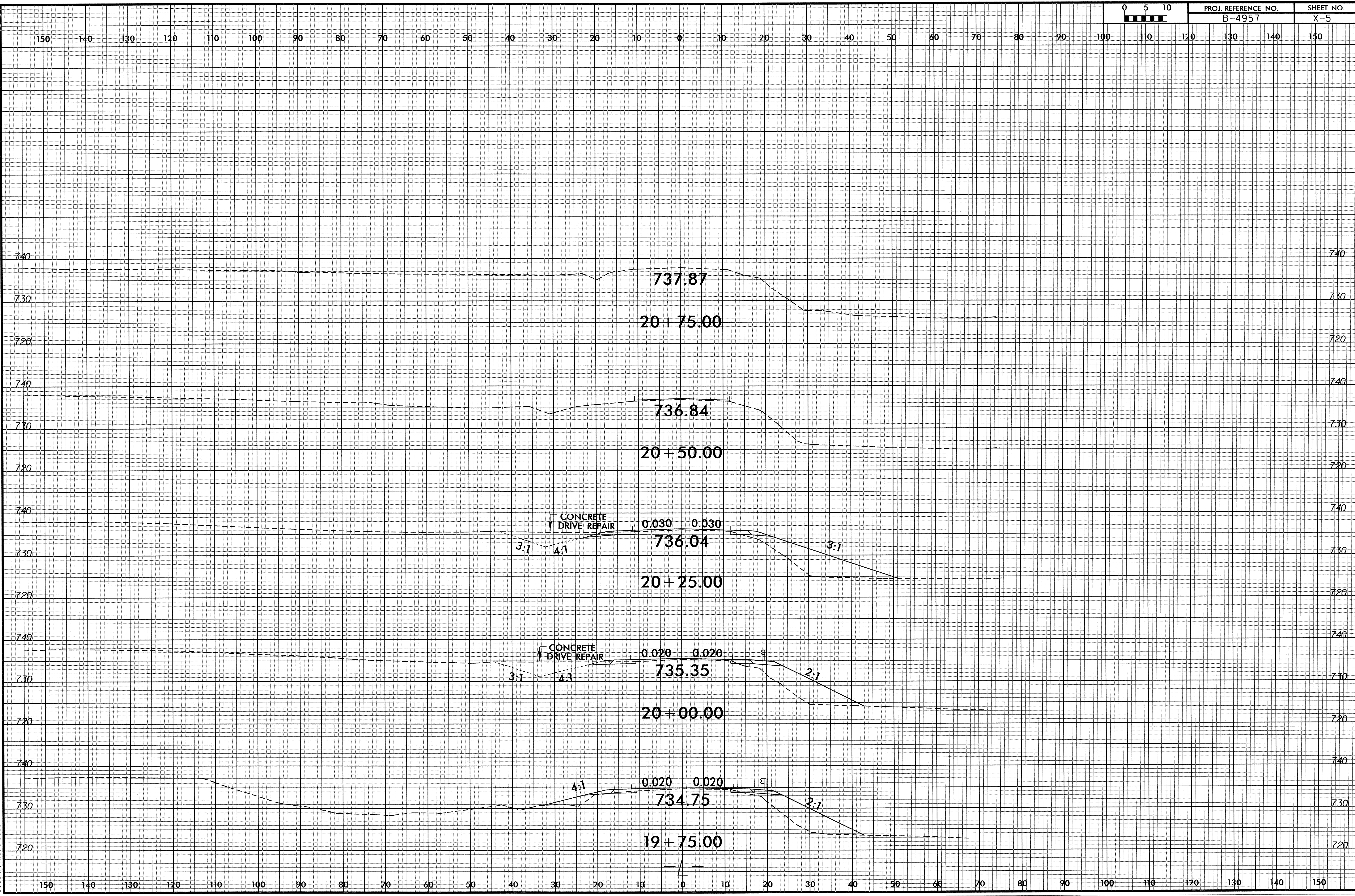
05-MAR-2013 17:08
P:\PROJECTS\B4957_Rdg.\p1.L.dgn
\$\$\$\$\$

8/23/95



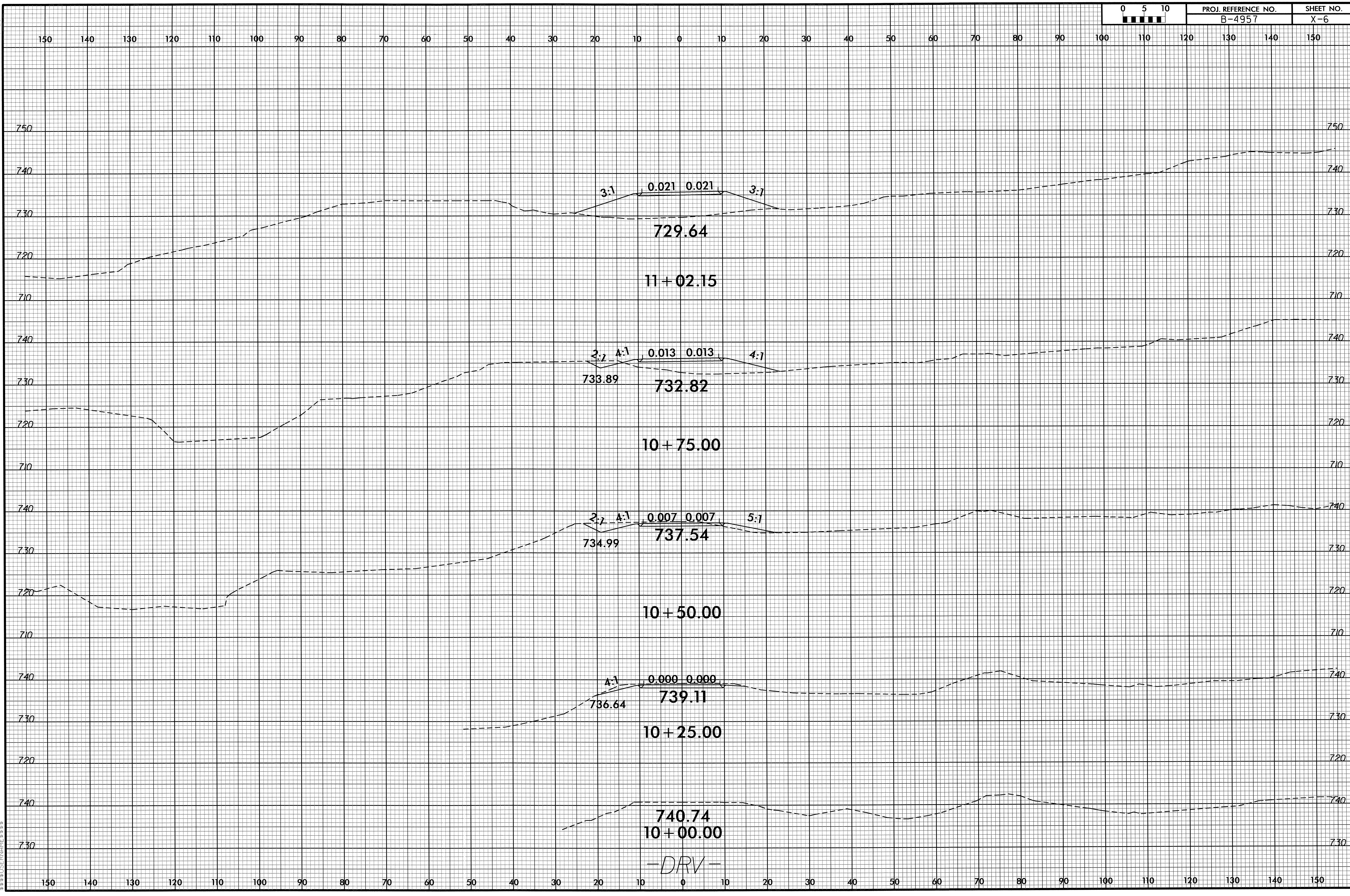
26-APR-2003 07:42
C:\PROJECTS\XSB\B4957_Rdy_wpl.L.dgn
\$\$\$\$USERNAME\$\$\$

8/23/99



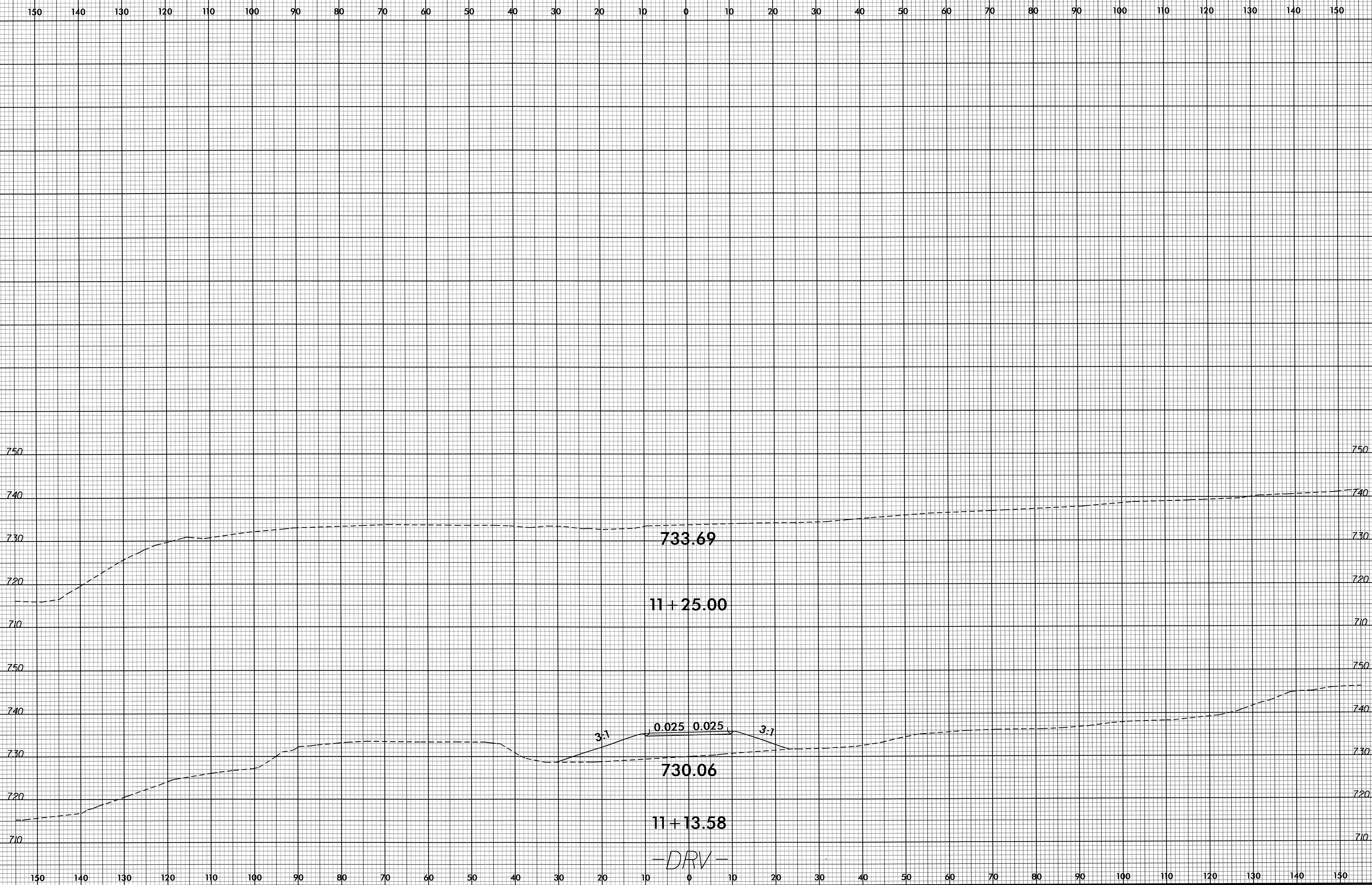
26-APP-2013 07142
P:\Roadway\XSO\B4957_Rdy_xpl.dgn
\$\$\$\$SERIAL\$\$\$\$

8/23/99



22-MAR-2013 14:32:09 B:\957_Rdly-sp1.DRV.dgn

8/23/99



14-FEB-2013 08:53
R:\Roadway\XSC\B4957_Rdy_xp1.DRV.dgn
\$\$\$\$\$USERNAME\$\$\$\$\$