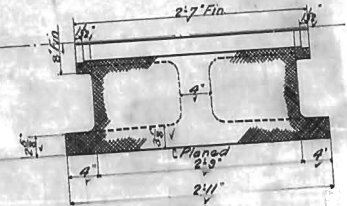
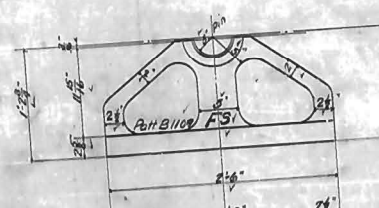
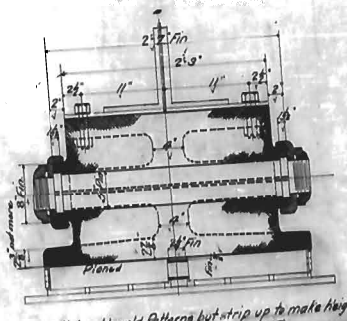
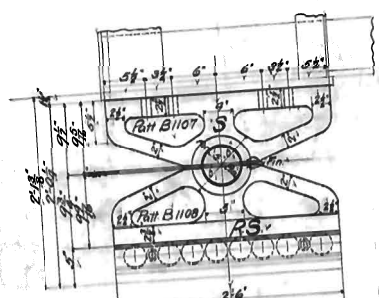
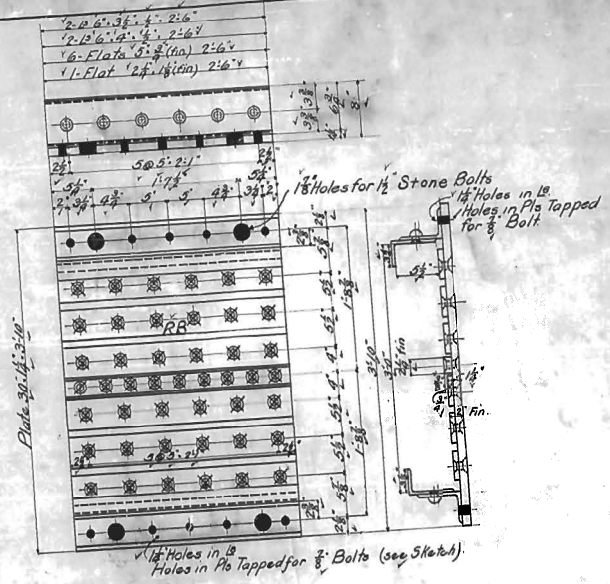
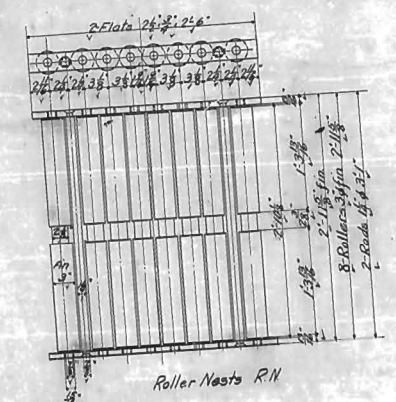


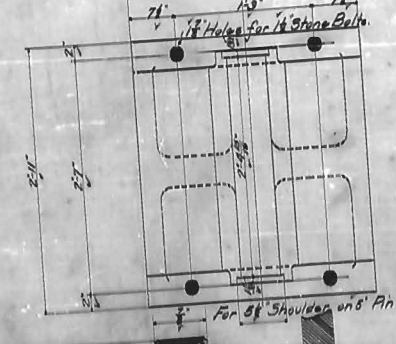
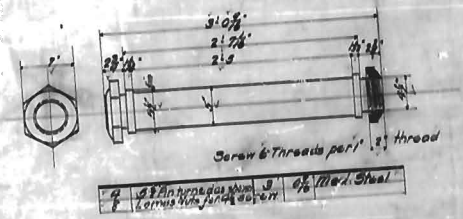
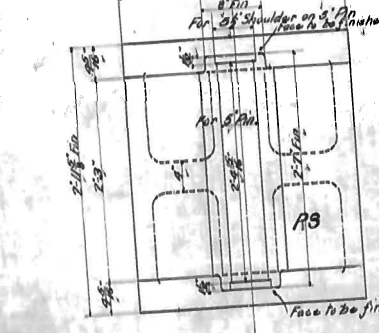
Req'd 2 Roller Nests Med Steel RN

1/16	3/32 Dia	Roller	2	1/4
1/4	1/2	Plate	2	6



Req'd 2 Roller Bed Pls RB Med Steel

2	50 x 24	Plate	2	6
2	25 x 25	Plate	2	6
2	30 x 4	Steel Bolts	0	3
2	30 x 4	Steel Lead	1	1/2
2	30 x 4	Steel Lead	2	1/2



Steel castings to be annealed

- Rivets flat
- Holes in metal exceeding 1/2 inch to be reamed to fit
- Other holes as noted
- Steel rivets shanked

Rocky River Crossing
Southern Railway
1 Sing To Deal Pl Girder Span 106'-0" h.o.
Shops
Scale 1/4" = 1'-0"

Castings Required

2	Cast Steel Upper Shoes	Part B117
2	Cast Steel Lower Shoes	Part B118
2	Steel Pressed Rings	Part B119
2	1/2 Turned Bolts	Part B120

Traced 4/10/10
107 J-V-0A
S. J. Curran
A 290