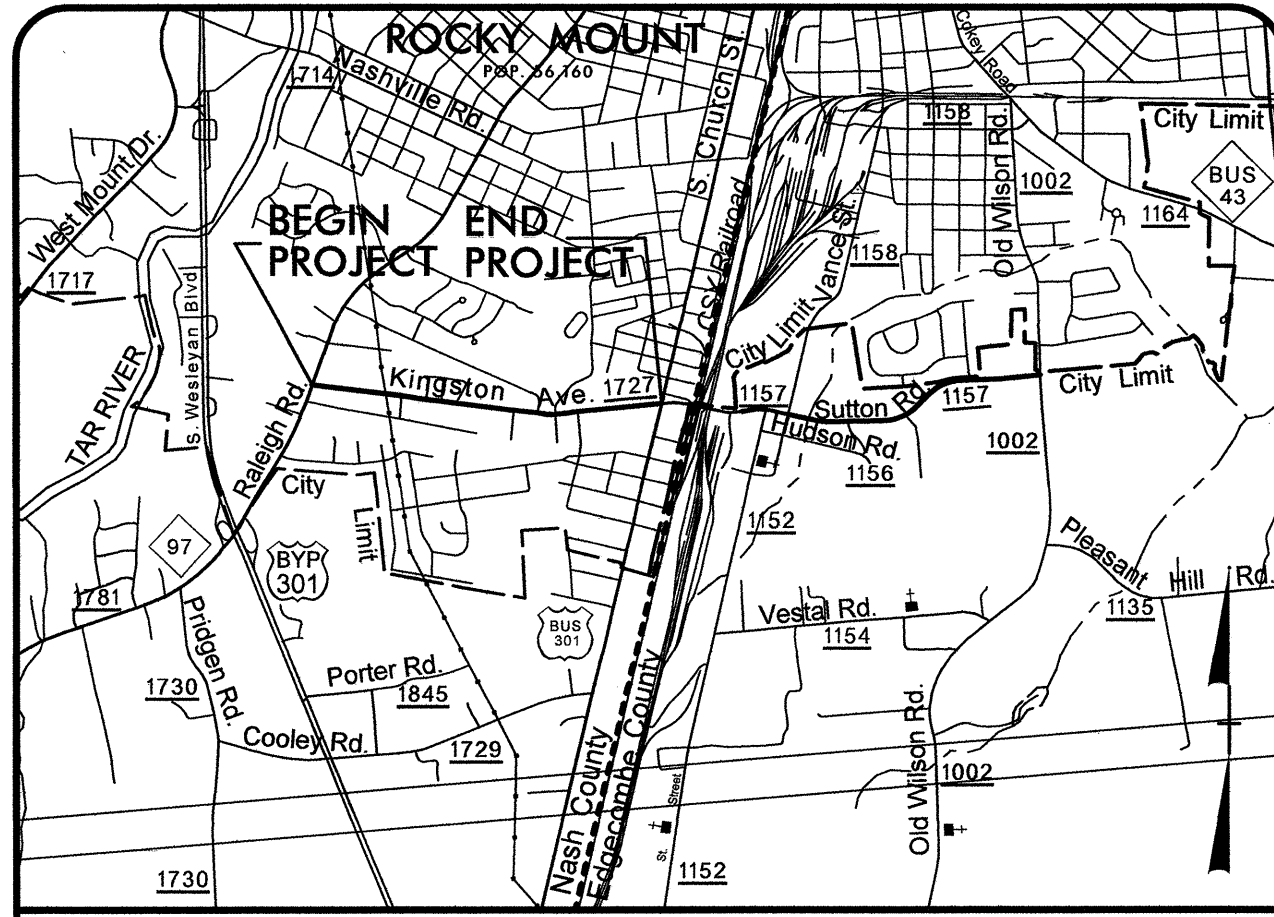


05/08/99

PROJECT: 40129



VICINITY MAP

STATE OF NORTH CAROLINA
DIVISION OF HIGHWAYS

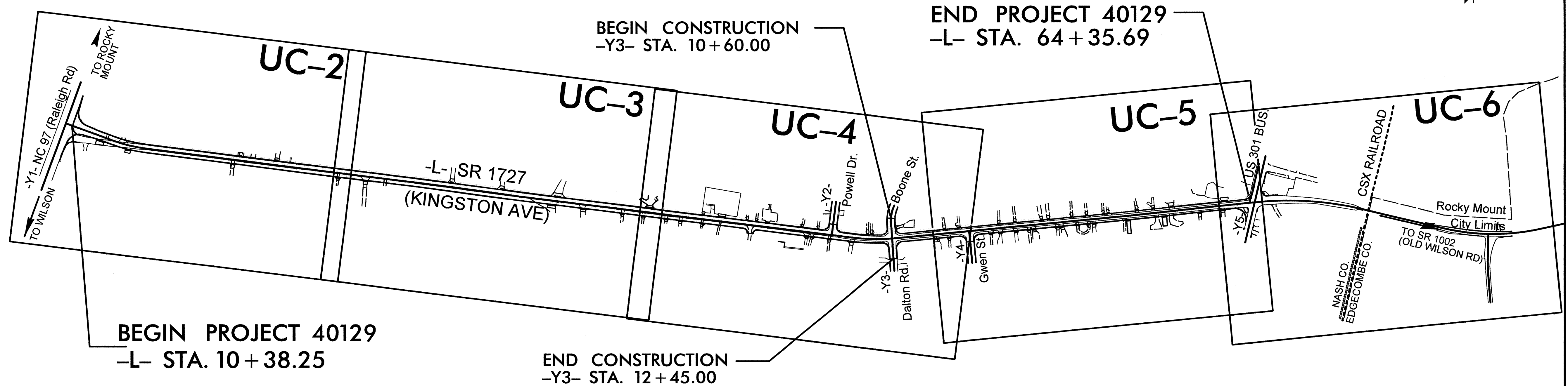
**UTILITY CONSTRUCTION
AS-BUILT PLANS
NASH COUNTY**

LOCATION: SR 1727 (KINGSTON AVE) IN NASH COUNTY
FROM NC 97 TO US 301BUS

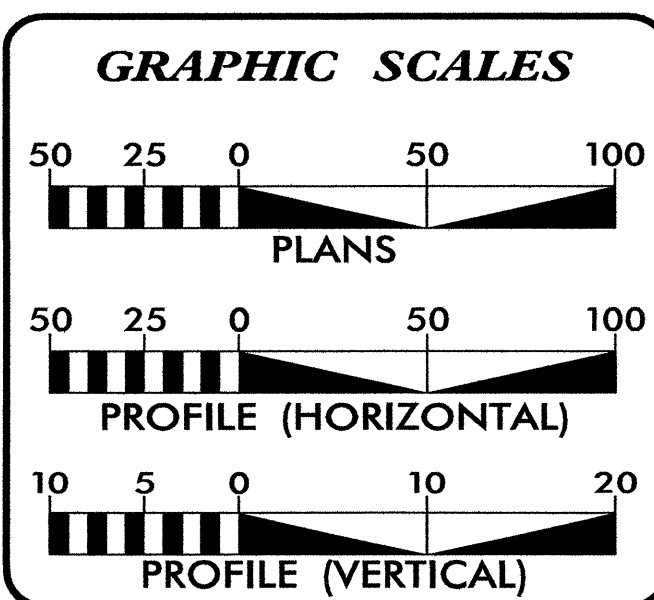
TYPE OF WORK: UTILITY CONSTRUCTION

STATE WBS REFERENCE NOS.	SHEET NO.
40129	UC-1

THESE PLANS ARE FOR INFORMATION ONLY.
THE CITY OF ROCKY MOUNT IS RELOCATING
THE UTILITIES AND SHOULD BE CONTACTED
PRIOR TO BEGINNING CONSTRUCTION.



CONTRACT #:



INDEX OF SHEETS	
SHEET NO.	DESCRIPTION
UC-1	TITLE SHEET
UC-2 THRU UC-6	UTILITY CONSTRUCTION PLAN SHEETS
UC-7 THRU UC-8	PROFILE SHEET(S)

WATER AND SEWER OWNERS ON PROJECT	
(1) WATER	- CITY OF ROCKY MOUNT
(2) SANITARY SEWER	- CITY OF ROCKY MOUNT

SEAL

NOT A CERTIFIED DOCUMENT AS TO THE ORIGINAL DOCUMENT BUT ONLY AS TO THE REVISIONS.

THIS DOCUMENT ORIGINALLY ISSUED AND SEALED BY:

JIMMY L. TERRY, JR.

35018 ON 06/06/12

THIS DOCUMENT IS ONLY CERTIFIED AS TO THE REVISIONS.

PLANS PREPARED BY:	PLANS PREPARED FOR:
 TGS ENGINEERS 975 WALNUT STREET SUITE 141 CARY, NC 27511 PH (919) 319-8850 CORP. LICENSE NO.: C-0275	NCDOT DIVISION 4 NCDOT Contact: JERRY PAGE, PE DIVISION PROJECT MANAGER CITY OF ROCKY MOUNT City Contact: BRAD KERR, PE PROJECT MANAGER
2012 STANDARD SPECIFICATIONS	JIMMY L. TERRY, PE PROJECT ENGINEER

\$\$\$\$\$SYTIME\$\$\$\$\$
 \$\$\$DESIGN\$\$\$\$\$
 \$\$\$USERNAME\$\$\$\$\$

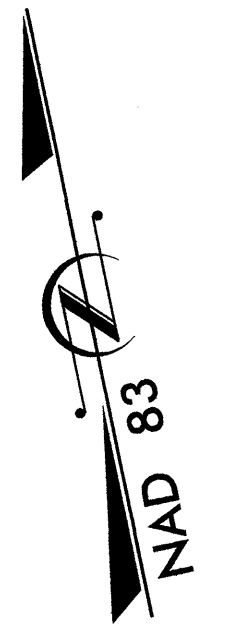
5/14/99

PEDSTRIAN SAFE GRATES TO BE USED FOR ALL DI'S AND 2GI'S

THESE PLANS ARE FOR INFORMATION ONLY. THE CITY OF ROCKY MOUNT IS RELOCATING THE UTILITIES AND SHOULD BE CONTACTED PRIOR TO BEGINNING CONSTRUCTION.

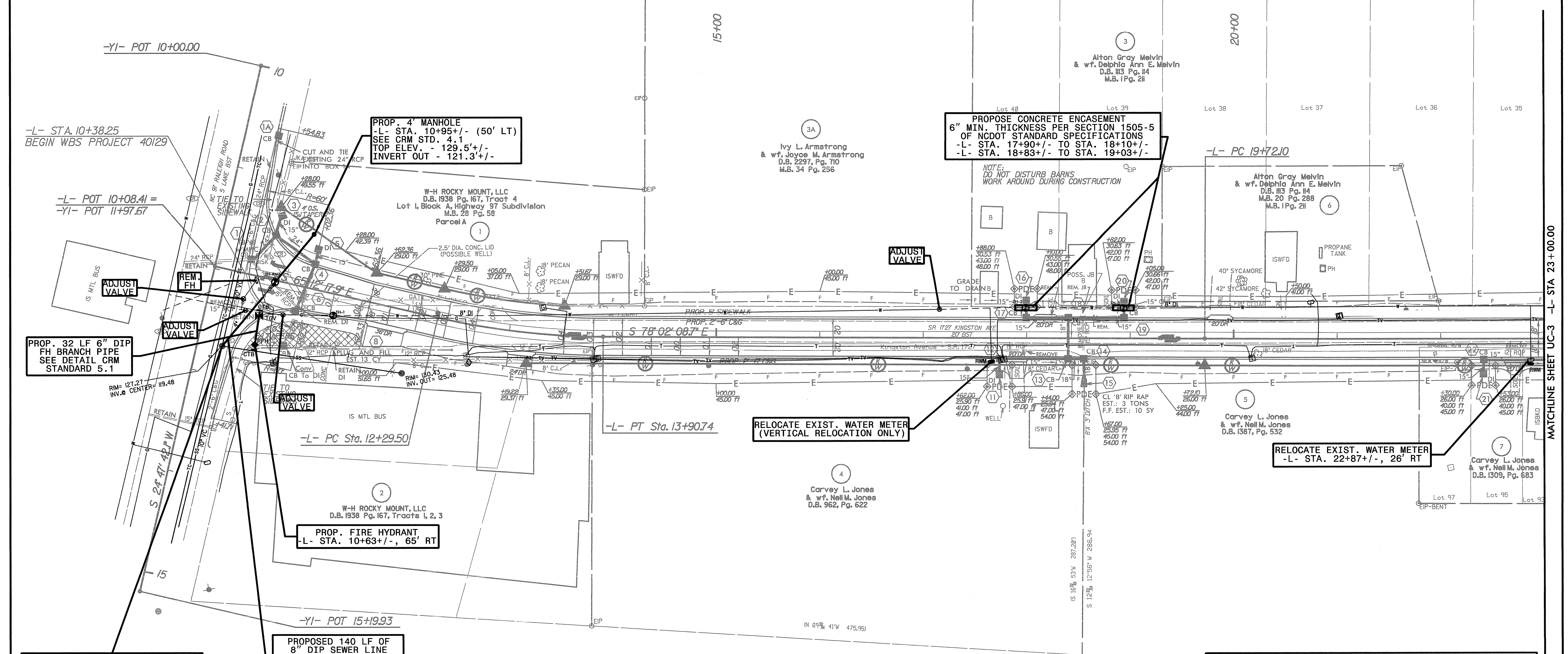
-L-

PI Sta 13+10.46	PI Sta 22+20.20
$\Delta = 12' 49" 50.8" (LT)$	$\Delta = 0' 32" 25.7" (LT)$
$D = 7' 57" 27.9"$	$D = 0' 06" 32.1"$
$L = 161.24'$	$L = 496.18'$
$T = 80.96'$	$T = 248.09'$
$R = 720.00'$	$R = 52,600.00'$
$SE = 0.04$	$SE = NC$



PROJECT REFERENCE NO. 40129	SHEET NO. UC-2
DESIGNED BY: JLT	NOT A CERTIFIED DOCUMENT AS TO THE ORIGINAL DOCUMENT BUT ONLY AS TO THE REVISIONS. THIS DOCUMENT ORIGINALLY ISSUED AND SEALED BY: JIMMY L. TERRY, JR. 35018 ON 06/06/12 THIS DOCUMENT IS ONLY CERTIFIED AS TO THE REVISIONS.
DRAWN BY: SGM	
CHECKED BY:	
APPROVED BY:	
REVISED:	
NORTH CAROLINA DEPARTMENT OF TRANSPORTATION	
UTILITY CONSTRUCTION PLANS ONLY	
TGS ENGINEERS SUITE 141 975 WALNUT STREET CARY, NC 27511 PH (919) 319-8850 CORP. LICENSE NO. C-0275	

UTILITY CONSTRUCTION



ADJUST TOP OF EXIST. SS MANHOLE TO MATCH PAVEMENT ELEVATIONS
TIE PROP. 8" DIP INTO EXISTING MANHOLE AT INVERT = 120.50'
GROUT AND FILL AS NEEDED

PROPOSED 140 LF OF 8" DIP SEWER LINE
REMOVE 80 LF OF EXIST. 4" SEWER LINE

Test Hole	Size and Material	Location	Top Elevation
TH-1	8" Ductile Iron	-L- 11 + 30.48, 20.77'Rt	123.67'
TH-2	8" Ductile Iron	-L- 17 + 98.88, 29.57'Lt	126.44'
TH-3	8" Ductile Iron	-L- 18 + 93.52, 29.50'Lt	126.82'
TH-RM3	8" Ductile Iron	-L- 10 + 68.53, 1.80'Rt	124.10'

NOTES:
USE THE TRENCH METHOD OF INSTALLATION FOR THE PROPOSED WATER AND SEWER LINE CONSTRUCTION (UNLESS OTHERWISE NOTED ON PLANS)
PROVIDE THRUST RESTRAINT FOR PIPE & APPURTENANCES IN ACCORDANCE WITH THE CITY OF ROCKY MOUNT STANDARD SPECIFICATIONS AND DETAILS.
PROVIDE 10' OF ENCASEMENT ON CROSSINGS WITH LESS THAN MINIMUM COVER, ACCORDING TO NCDOT STANDARD SPECIFICATIONS SECTION 1505-5.
ALL WATER AND SEWER LINE CONSTRUCTION SHALL BE IN ACCORDANCE WITH THE CITY OF ROCKY MOUNT STANDARD SPECIFICATIONS, AND NCDOT STANDARD SPECIFICATIONS SECTION 1500.
ALL WATER METERS SHALL BE PLACED AS SHOWN ON THE PLANS AND PER CITY OF ROCKY MOUNT STANDARD NO. 5.5. ALL SERVICE LINES SHALL BE EXTENDED OR REPLACED IN-KIND TO SECURE A PROPER CONNECTION.
NOTE: IT IS THE CONTRACTOR'S RESPONSIBILITY TO VERIFY ALL UTILITIES AND THEIR LOCATIONS AFFECTED BY THE CONSTRUCTION. THE CONTRACTOR SHALL PROTECT ALL UTILITIES DURING CONSTRUCTION IN ACCORDANCE WITH SECTION 105-8 OF THE NCDOT STANDARD SPECIFICATIONS.

MATCHLINE SHEET UC-3 -L- STA 23+00.00

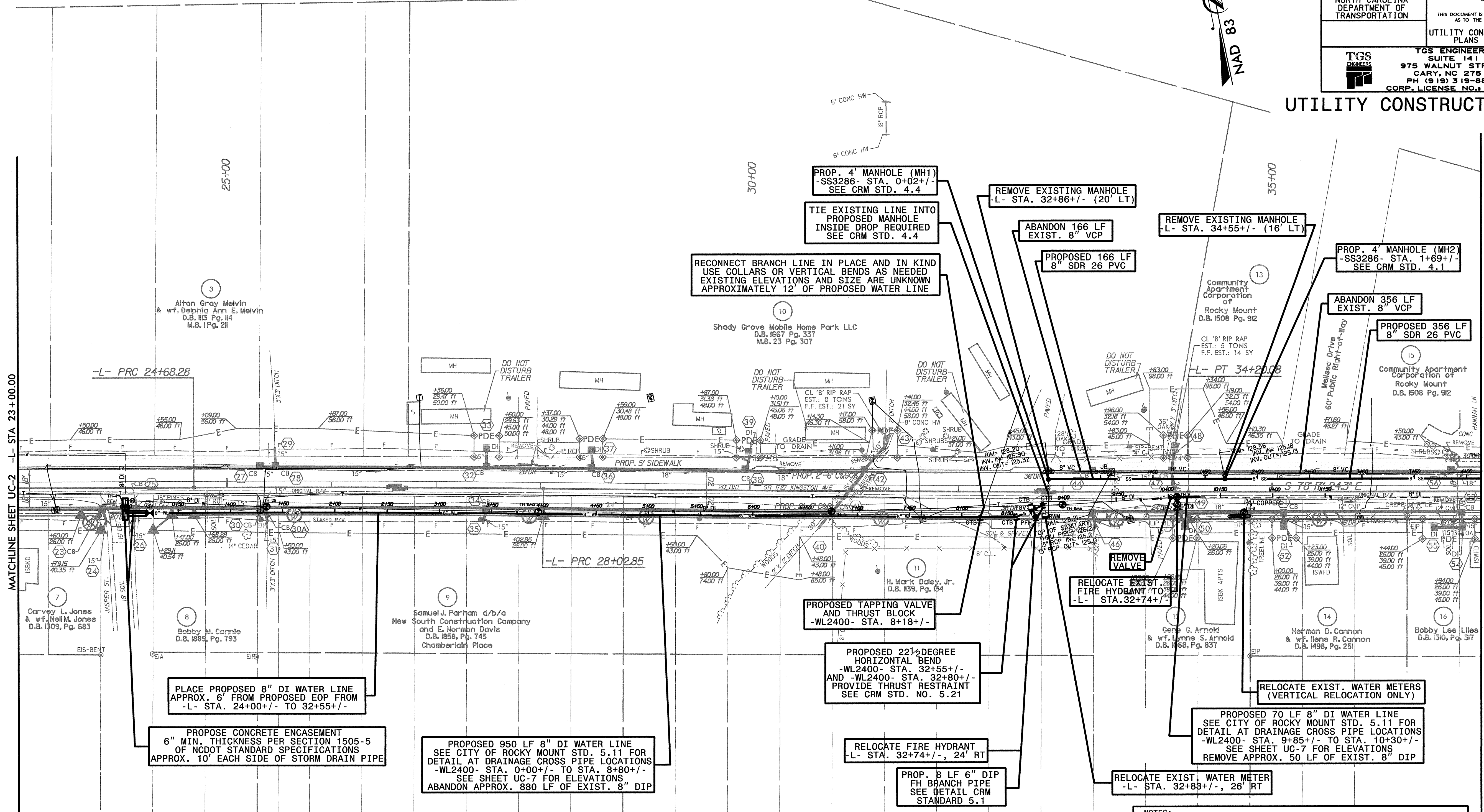
PEDSTRIAN SAFE GRATES TO BE USED FOR ALL DI'S AND 2GI'S

-L-

PI Sta 22+20.20 Δ = 0° 32' 25.7" (LT) D = 0° 06' 32.1" L = 496.18' T = 248.09' R = 52,600.00' SE = NC	PI Sta 26+35.57 Δ = 0° 57' 30.5" (RT) D = 0° 17' 11.3" L = 334.57' T = 167.29' R = 20,000.00' SE = NC	PI Sta 31+11.47 Δ = 0° 40' 20.4" (LT) D = 0° 06' 32.1" L = 617.23' T = 308.62' R = 52,600.00' SE = NC
---	---	---

PROJECT REFERENCE NO. 40129	SHEET NO. UC-3
DESIGNED BY: JLT	NOT A CERTIFIED DOCUMENT AS TO THE ORIGINAL DOCUMENT BUT ONLY AS TO THE REVISIONS. THIS DOCUMENT ORIGINALLY ISSUED AND SEALED BY: JIMMY L. TERRY, JR. 35018 ON 06/04/2 THIS DOCUMENT IS ONLY CERTIFIED AS TO THE REVISIONS.
DRAWN BY: SGM	
CHECKED BY:	
APPROVED BY:	
REVISIONS:	
NORTH CAROLINA DEPARTMENT OF TRANSPORTATION	
UTILITY CONSTRUCTION PLANS ONLY	
TGS ENGINEERS SUITE 141 975 WALNUT STREET CARY, NC 27511 PH (919) 319-8850 CORP. LICENSE NO. C-Q275	

UTILITY CONSTRUCTION



THESE PLANS ARE FOR INFORMATION ONLY. THE CITY OF ROCKY MOUNT IS RELOCATING THE UTILITIES AND SHOULD BE CONTACTED PRIOR TO BEGINNING CONSTRUCTION.

Test Hole	Size and Material	Location	Top Elevation
TH-4	8" Ductile Iron	-L- 24 + 03.04, 19.30' Rt	126.19'
TH-5	8" Ductile Iron	-L- 30 + 78.63, 19.24' Rt	123.64'
TH-6	8" Ductile Iron	-L- 34 + 09.00, 4.99' Rt	125.48'
TH-7	6" Ductile Iron	-L- 34 + 09.21, 11.88' Rt	125.43'
TH-8	3/4" Copper	-L- 34 + 73.23, 19.59' Rt	126.98'
TH-28	8" Ductile Iron	-L- 25 + 37.76, 18.37' Rt	124.31'
TH-RM5	8" Ductile Iron	-L- 27 + 98.08, 22.25' Rt	125.19'
TH-RM6	8" Ductile Iron	-L- 32 + 99.62, 12.07' Rt	123.06'

NOTES:
 USE THE TRENCH METHOD OF INSTALLATION FOR THE PROPOSED WATER AND SEWER LINE CONSTRUCTION (UNLESS OTHERWISE NOTED ON PLANS)
 PROVIDE THRUST RESTRAINT FOR PIPE & APPURTENANCES IN ACCORDANCE WITH THE CITY OF ROCKY MOUNT STANDARD SPECIFICATIONS AND DETAILS.
 PROVIDE 10' OF ENCASUREMENT ON CROSSINGS WITH LESS THAN MINIMUM COVER, ACCORDING TO NCDOT STANDARD SPECIFICATIONS SECTION 1505-5.
 ALL WATER AND SEWER LINE CONSTRUCTION SHALL BE IN ACCORDANCE WITH THE CITY OF ROCKY MOUNT STANDARD SPECIFICATIONS, AND NCDOT STANDARD SPECIFICATIONS SECTION 1500.
 ALL WATER METERS SHALL BE PLACED AS SHOWN ON THE PLANS AND PER CITY OF ROCKY MOUNT STANDARD NO. 5.5. ALL SERVICE LINES SHALL BE EXTENDED OR REPLACED IN-KIND TO SECURE A PROPER CONNECTION.
 NOTE: IT IS THE CONTRACTOR'S RESPONSIBILITY TO VERIFY ALL UTILITIES AND THEIR LOCATIONS AFFECTED BY THE CONSTRUCTION. THE CONTRACTOR SHALL PROTECT ALL UTILITIES DURING CONSTRUCTION IN ACCORDANCE WITH SECTION 105-8 OF THE NCDOT STANDARD SPECIFICATIONS.

CONSTRUCTION
 UTILITY
 USER
 NAME

5/14/99

NOTES:

PEDESTRIAN SAFE GRATES TO BE USED FOR ALL DI'S AND 2GI'S

USE THE TRENCH METHOD OF INSTALLATION FOR THE PROPOSED WATER AND SEWER LINE CONSTRUCTION (UNLESS OTHERWISE NOTED ON PLANS)

PROVIDE THRUST RESTRAINT FOR PIPE & APPURTENANCES IN ACCORDANCE WITH THE CITY OF ROCKY MOUNT STANDARD SPECIFICATIONS AND DETAILS.

PROVIDE 10' OF ENCASEMENT ON CROSSINGS WITH LESS THAN MINIMUM COVER, ACCORDING TO NCDOT STANDARD SPECIFICATIONS SECTION 1505-5.

ALL WATER AND SEWER LINE CONSTRUCTION SHALL BE IN ACCORDANCE WITH THE CITY OF ROCKY MOUNT STANDARD SPECIFICATIONS, AND NCDOT STANDARD SPECIFICATIONS SECTION 1500.

ALL WATER METERS SHALL BE PLACED AS SHOWN ON THE PLANS AND PER CITY OF ROCKY MOUNT STANDARD NO. 5.5. ALL SERVICE LINES SHALL BE EXTENDED OR REPLACED IN-KIND TO SECURE A PROPER CONNECTION.


NOTE: IT IS THE CONTRACTOR'S RESPONSIBILITY TO VERIFY ALL UTILITIES AND THEIR LOCATIONS AFFECTED BY THE CONSTRUCTION. THE CONTRACTOR SHALL PROTECT ALL UTILITIES DURING CONSTRUCTION IN ACCORDANCE WITH SECTION 105-8 OF THE NCDOT STANDARD SPECIFICATIONS.

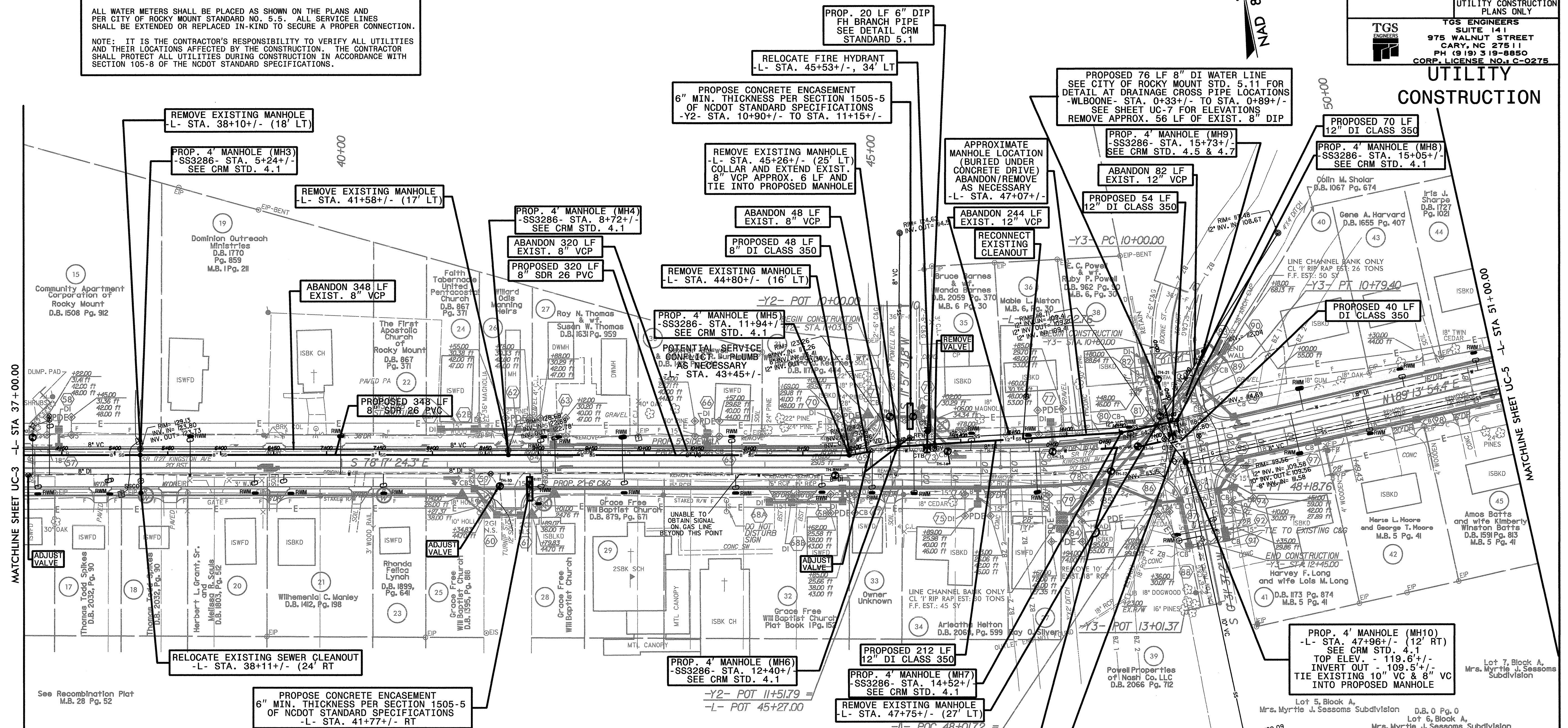
-L-

PI Sta 47+21.5
 $\Delta = 12' 28" 41.4" (LT)$
 $D = 6' 2" 58.3"$
 $L = 196.0'$
 $T = 98.39'$
 $R = 900.00'$
 $SE = 0.04$

-Y3-

PI Sta 10+40.63
 $\Delta = 29' 59" 41.2" (LT)$
 $D = 37' 46" 32.4"$
 $L = 79.40'$
 $T = 40.63'$
 $R = 151.67'$
 $SE = EXIST.$

PROJECT REFERENCE NO. 40129	SHEET NO. UC-4
DESIGNED BY: JLT	NOT A CERTIFIED DOCUMENT AS TO THE ORIGINAL DOCUMENT BUT ONLY AS TO THE REVISIONS. THIS DOCUMENT ORIGINALLY ISSUED AND SEALED BY: JIMMY L. TERRY, JR. 35018 ON 06/06/12
DRAWN BY: SGM	
CHECKED BY:	
APPROVED BY:	
REVISER:	UTILITY CONSTRUCTION PLANS ONLY
NORTH CAROLINA DEPARTMENT OF TRANSPORTATION  TGS ENGINEERS SUITE 141 975 WALNUT STREET CARY, NC 27511 PH (919) 319-8850 CORP. LICENSE NO. C-0275	



Test Hole	Size and Material	Location	Top Elevation
TH-10	8" Ductile Iron	-L- 41 + 49.71, 17.49'Rt	125.42'
TH-11	8" Ductile Iron	-L- 41 + 77.67, 15.97'Rt	125.01'
TH-12	2" Gas Pipe	-L- 45 + 18.11, 47.99'Lt	120.24'
TH-13	8" Ductile Iron	-L- 45 + 40.03, 47.92'Lt	118.56'
TH-14	8" Ductile Iron	-L- 45 + 72.72, 15.20'Lt	117.61'
TH-15	8" Ductile Iron	-L- 46 + 72.68, 13.61'Lt	114.45'
TH-16	8" Ductile Iron	-L- 47 + 54.29, 10.13'Lt	113.36'
TH-17	2" Plastic Pipe	-L- 47 + 26.14, 9.85'Rt	116.87'
TH-20	8" Ductile Iron	-L- 47 + 80.44, 34.77'Lt	112.81'
TH-21	8" Ductile Iron	-L- 47 + 84.49, 69.26'Lt	113.66'
TH-RM2	6" Ductile Iron	-L- 37 + 08.45, 28.91'Lt	122.62'
TH-RM4	8" Ductile Iron	-L- 44 + 66.54, 7.55'Rt	121.64'

THESE PLANS ARE FOR INFORMATION ONLY. THE CITY OF ROCKY MOUNT IS RELOCATING THE UTILITIES AND SHOULD BE CONTACTED PRIOR TO BEGINNING CONSTRUCTION.

RELOCATE EXISTING WATER METERS AT THE FOLLOWING LOCATIONS:

-L- STA. 37+13+/-, 26' RT
-L- STA. 37+81+/-, 26' RT
-L- STA. 39+18+/-, 26' RT
-L- STA. 39+52+/-, 26' RT
-L- STA. 41+86+/-, 34' RT
-L- STA. 42+66+/-, 25' RT
-L- STA. 43+72+/-, 25' RT
-L- STA. 44+54+/-, 25' RT
-L- STA. 45+01+/-, 25' RT
-L- STA. 45+41+/-, 25' RT
-L- STA. 46+57+/-, 25' RT
-L- STA. 49+03+/-, 27' RT
-L- STA. 49+73+/-, 25' RT
-L- STA. 38+58+/-, 29' LT
-L- STA. 40+00+/-, 29' LT
-L- STA. 41+90+/-, 29' LT
-L- STA. 42+05+/-, 29' LT
-L- STA. 42+65+/-, 29' LT
-L- STA. 43+69+/-, 29' LT
-L- STA. 45+96+/-, 32' LT
-L- STA. 46+50+/-, 29' LT
-L- STA. 47+48+/-, 29' LT
-L- STA. 49+15+/-, 33' LT
-L- STA. 50+12+/-, 29' LT
-L- STA. 50+83+/-, 29' LT
-Y3- STA. 12+30+/-, 27' RT

 SECTION 1500
 CONSTRUCTION
 STANDARD SPECIFICATIONS
 SECTION 1500

PEDestRIAN SAFE GRATES TO BE USED FOR ALL DI'S AND 2GI'S

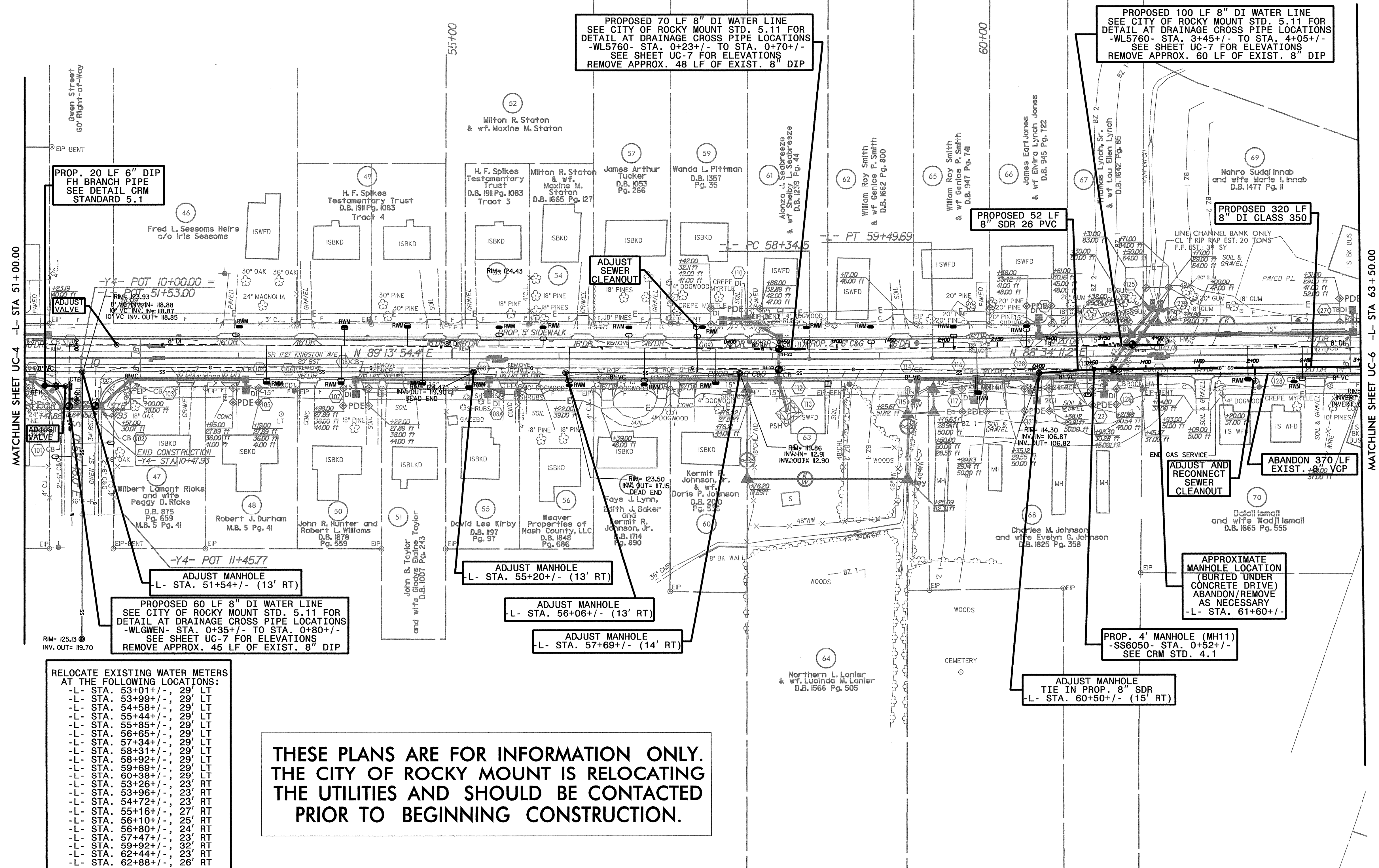
-L-
PI Sta 58+91.92
Δ = 0° 39' 43.1" (LT)
D = 0° 34' 22.6"
L = 115.54'
T = 57.77'
R = 10,000.00'
SE = NC

NOTES:
USE THE TRENCH METHOD OF INSTALLATION FOR THE PROPOSED WATER AND SEWER LINE CONSTRUCTION (UNLESS OTHERWISE NOTED ON PLANS)
PROVIDE THRUST RESTRAINT FOR PIPE & APPURTENANCES IN ACCORDANCE WITH THE CITY OF ROCKY MOUNT STANDARD SPECIFICATIONS AND DETAILS.
PROVIDE 10' OF ENCASEMENT ON CROSSINGS WITH LESS THAN MINIMUM COVER, ACCORDING TO NCDOT STANDARD SPECIFICATIONS SECTION 1505-5.
ALL WATER AND SEWER LINE CONSTRUCTION SHALL BE IN ACCORDANCE WITH THE CITY OF ROCKY MOUNT STANDARD SPECIFICATIONS, AND NCDOT STANDARD SPECIFICATIONS SECTION 1500.
ALL WATER METERS SHALL BE PLACED AS SHOWN ON THE PLANS AND PER CITY OF ROCKY MOUNT STANDARD NO. 5.5. ALL SERVICE LINES SHALL BE EXTENDED OR REPLACED IN-KIND TO SECURE A PROPER CONNECTION.
NOTE: IT IS THE CONTRACTOR'S RESPONSIBILITY TO VERIFY ALL UTILITIES AND THEIR LOCATIONS AFFECTED BY THE CONSTRUCTION. THE CONTRACTOR SHALL PROTECT ALL UTILITIES DURING CONSTRUCTION IN ACCORDANCE WITH SECTION 105-8 OF THE NCDOT STANDARD SPECIFICATIONS.



PROJECT REFERENCE NO.	40129	SHEET NO.	UC-5
DESIGNED BY:	JLT	NOT A CERTIFIED DOCUMENT AS TO THE ORIGINAL DOCUMENT BUT ONLY AS TO THE REVISIONS.	
DRAWN BY:	SGM	THIS DOCUMENT ORIGINALLY ISSUED AND SEALED BY:	
CHECKED BY:		JIMMY L. TERRY, JR.	
APPROVED BY:		35018 ON 06/06/12	
REVISED:		THIS DOCUMENT IS ONLY CERTIFIED AS TO THE REVISIONS.	
NORTH CAROLINA DEPARTMENT OF TRANSPORTATION		UTILITY CONSTRUCTION PLANS ONLY	
TGS ENGINEERS		TGS ENGINEERS	
SUITE 141		SUITE 141	
975 WALNUT STREET		975 WALNUT STREET	
CARY, NC 27511		CARY, NC 27511	
PH (919) 319-8850		PH (919) 319-8850	
CORP. LICENSE NO. C-0275		CORP. LICENSE NO. C-0275	

Test Hole	Size and Material	Location	Top Elevation
TH-18	8" Ductile Iron	-L- 51+41.59, 44.84' Rt	121.44'
TH-19	2" Plastic Gas Line	-L- 51+66.11, 44.43' Rt	121.03'
TH-22	8" Ductile Iron	-L- 58.05.78, 9.48' Lt	116.37'
TH-23	2" Plastic Gas Line	-L- 58+05.65, 9.95' Rt	115.72'
TH-24	8" Ductile Iron	-L- 61+36.62, 10.71' Lt	111.53'
TH-25	3/4" Plastic Gas Line	-L- 61+18.71, 12.48' Rt	111.53'




UTILITY CONSTRUCTION PLANS

5/14/99

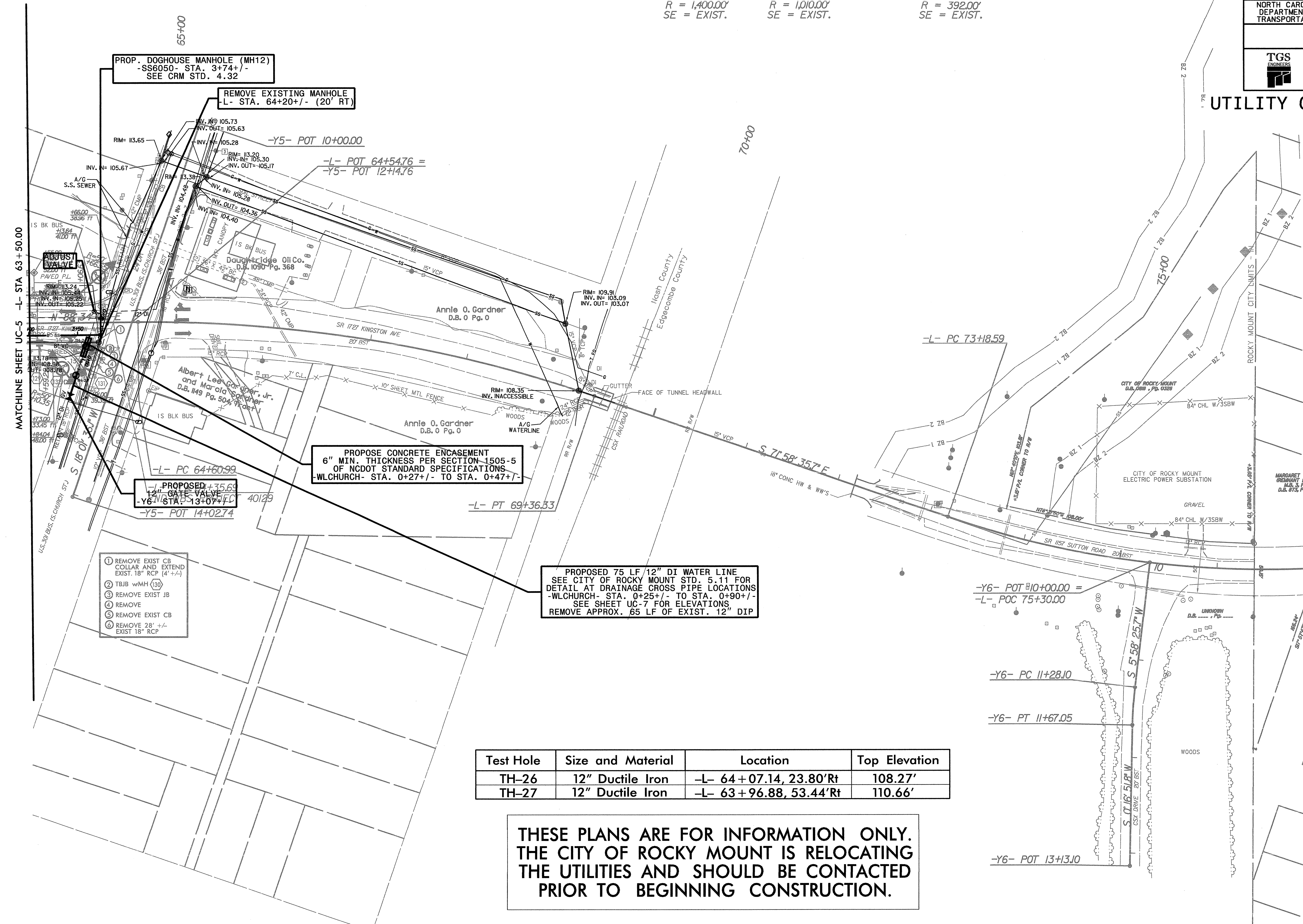
PEDSTRIAN SAFE GRATES TO BE USED FOR ALL DI'S AND 2G'S

-L-
 PI Sta 67+00.97 PI Sta 75+48.94
 $\Delta = 19' 27" 13.0"$ (RT) $\Delta = 25' 4' 40.7"$ (LT)
 $D = 4' 05" 33.2"$ $D = 5' 40" 22.3"$
 $L = 475.34'$ $L = 452.94'$
 $T = 239.98'$ $T = 230.34'$
 $R = 1,400.00'$ $R = 1,010.00'$
 SE = EXIST. SE = EXIST.

-Y6-
 PI Sta 11+47.59
 $\Delta = 5' 4' 33.9"$ (LT)
 $D = 14' 36" 58.6"$
 $L = 38.95'$
 $T = 19.49'$
 $R = 392.00'$
 SE = EXIST.

PROJECT REFERENCE NO.	SHEET NO.
40129	UC-6
DESIGNED BY: JLT	NOT A CERTIFIED DOCUMENT AS TO THE ORIGINAL DOCUMENT BUT ONLY AS TO THE REVISIONS. THIS DOCUMENT ORIGINALLY ISSUED AND SEALED BY: JIMMY L. TERRY, JR. 35018 ON 06/06/12 THIS DOCUMENT IS ONLY CERTIFIED AS TO THE REVISIONS. UTILITY CONSTRUCTION PLANS ONLY
DRAWN BY: SGM	
CHECKED BY:	
APPROVED BY:	
REVISER:	TGS ENGINEERS SUITE 141 975 WALNUT STREET CARY, NC 27511 PH (919) 319-8850 CORP. LICENSE NO. C-0275
NORTH CAROLINA DEPARTMENT OF TRANSPORTATION 	

UTILITY CONSTRUCTION



- 1 REMOVE EXIST CB COLLAR AND EXTEND EXIST. 18" RCP (4'+/-)
- 2 TBIB w/MH (30)
- 3 REMOVE EXIST JB
- 4 REMOVE
- 5 REMOVE EXIST CB
- 6 REMOVE 28' +/- EXIST 18" RCP

PROPOSED 75 LF 12" DI WATER LINE
 SEE CITY OF ROCKY MOUNT STD. 5.11 FOR
 DETAIL AT DRAINAGE CROSS PIPE LOCATIONS
 -WLCHURCH- STA. 0+25+/- TO STA. 0+90+/-
 SEE SHEET UC-7 FOR ELEVATIONS
 REMOVE APPROX. 65 LF OF EXIST. 12" DIP

Test Hole	Size and Material	Location	Top Elevation
TH-26	12" Ductile Iron	-L- 64+07.14, 23.80'Rt	108.27'
TH-27	12" Ductile Iron	-L- 63+96.88, 53.44'Rt	110.66'

THESE PLANS ARE FOR INFORMATION ONLY.
 THE CITY OF ROCKY MOUNT IS RELOCATING
 THE UTILITIES AND SHOULD BE CONTACTED
 PRIOR TO BEGINNING CONSTRUCTION.

DATE: 5/14/99
 DRAWN BY: SGM
 CHECKED BY:
 APPROVED BY:
 REVISER:

5/14/99

THESE PLANS ARE FOR INFORMATION ONLY. THE CITY OF ROCKY MOUNT IS RELOCATING THE UTILITIES AND SHOULD BE CONTACTED PRIOR TO BEGINNING CONSTRUCTION.

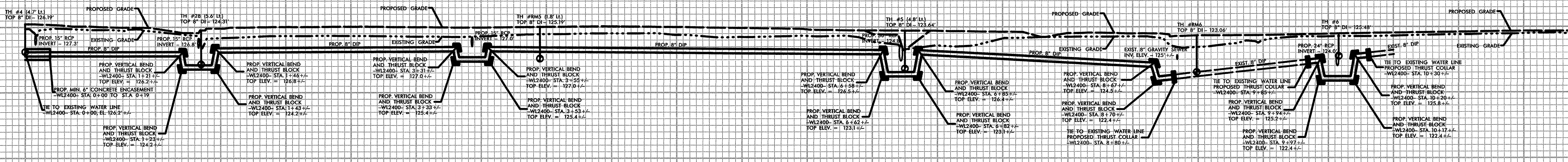
NOTES: USE THE TRENCH METHOD OF INSTALLATION FOR THE PROPOSED WATER AND SEWER LINE CONSTRUCTION (UNLESS OTHERWISE NOTED ON PLANS). PROVIDE THRUST RESTRAINT FOR PIPE & APPURTENANCES IN ACCORDANCE WITH THE CITY OF ROCKY MOUNT STANDARD SPECIFICATIONS AND DETAILS. PROVIDE 10' OF ENCASEMENT ON CROSSINGS WITH LESS THAN MINIMUM COVER, STANDARD SPECIFICATIONS SECTION 1505-5. ALL WATER AND SEWER LINE CONSTRUCTION SHALL BE IN ACCORDANCE WITH THE CITY OF ROCKY MOUNT STANDARD SPECIFICATIONS, AND NCDOT STANDARD SPECIFICATIONS SECTION 1505-5. ALL WATER METERS SHALL BE PLACED AS SHOWN ON THE PLANS AND PER CITY OF ROCKY MOUNT STANDARD NO. 5.5. ALL SERVICE LINES SHALL BE EXTENDED OR REPLACED IN-KIND TO SECURE A PROPER CONNECTION. NOTE: IT IS THE CONTRACTOR'S RESPONSIBILITY TO VERIFY ALL UTILITIES AND THEIR LOCATIONS AFFECTED BY THE CONSTRUCTION. THE CONTRACTOR SHALL PROTECT ALL UTILITIES DURING CONSTRUCTION IN ACCORDANCE WITH SECTION 105-8 OF THE NCDOT STANDARD SPECIFICATIONS.

Table with project reference no. 40129, sheet no. UC-7, and contact information for TGS ENGINEERS.

-WL2400-

UTILITY CONSTRUCTION PLANS ONLY

140
130
120
110



SEE SHEET UC-3 FOR -WL2400- PLANS

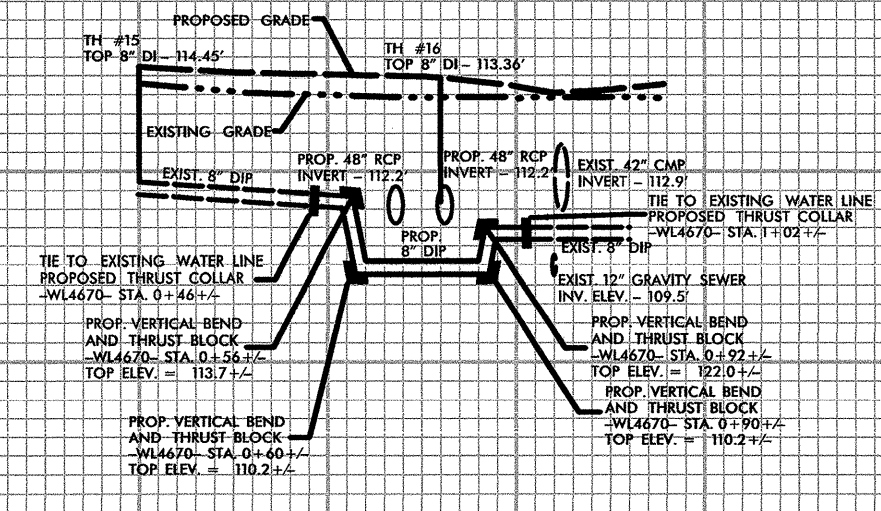
0+00 0+50 1+00 1+50 2+00 2+50 3+00 3+50 4+00 4+50 5+00 5+50 6+00 6+50 7+00 7+50 8+00 8+50 9+00 9+50 10+00 10+50 11+00 11+50

-WL4670-

-WLGWEN-

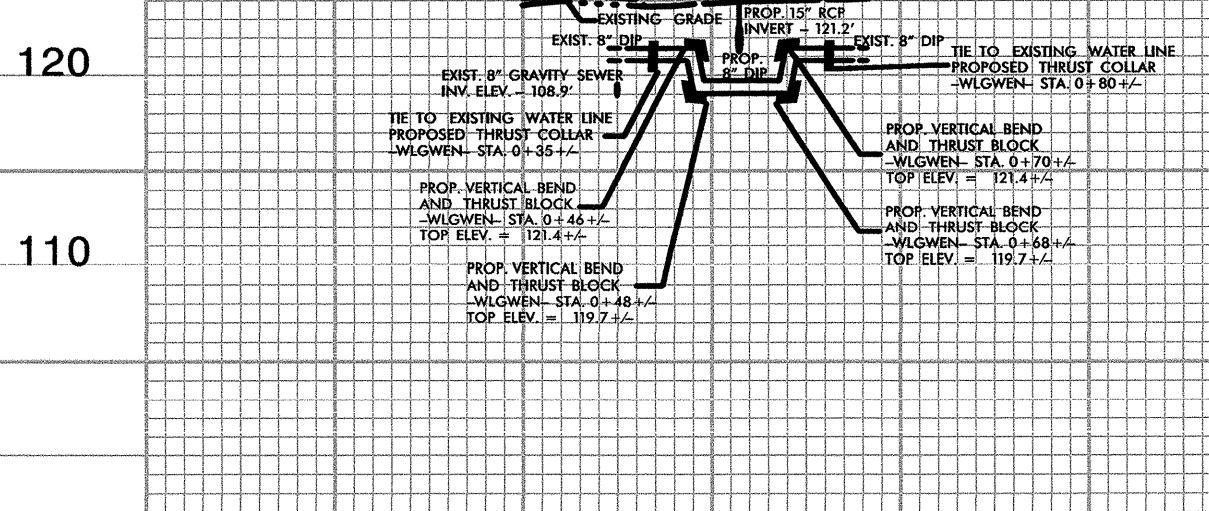
-WLCHURCH-

130
120
110



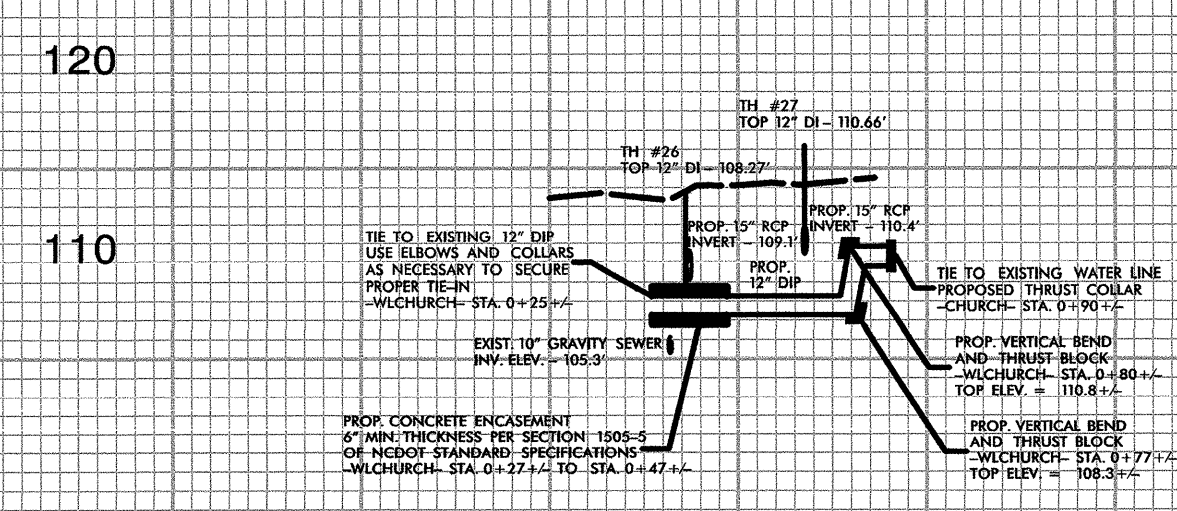
SEE SHEET UC-4 FOR -WL4670- PLANS

0+00 0+50 1+00



SEE SHEET UC-5 FOR -WLGWEN- PLANS

0+00 0+50



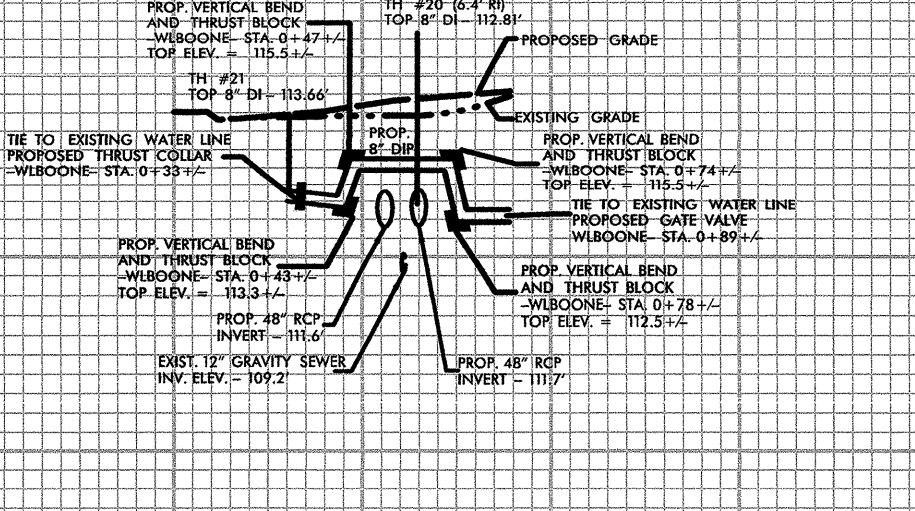
SEE SHEET UC-6 FOR -WLCHURCH- PLANS

0+00 0+50

-WLBOONE-

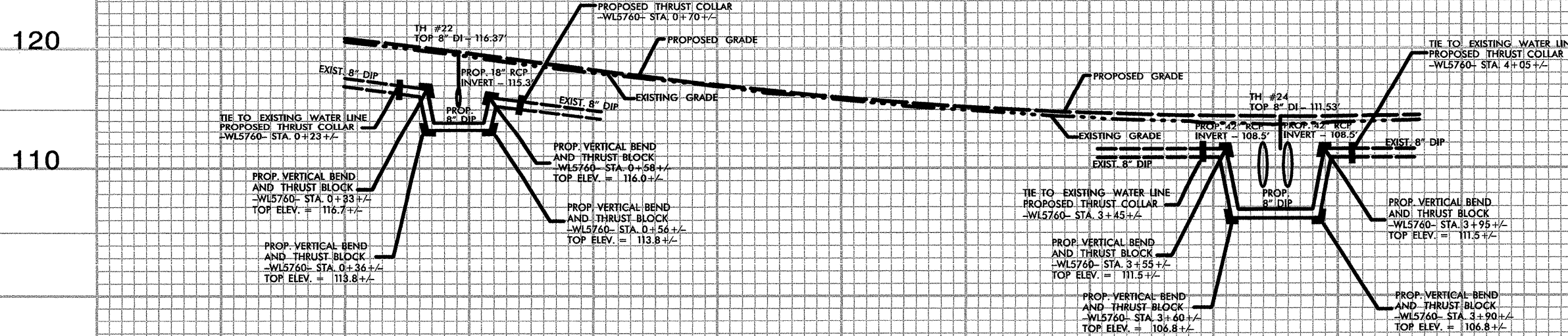
-WL5760-

120
110



SEE SHEET UC-4 FOR -WLBOONE- PLANS

0+00 0+50



SEE SHEET UC-5 FOR -WL5760- PLANS

0+00 0+50 1+00 1+50 2+00 2+50 3+00 3+50 4+00

5/14/99

5/14/99

-SS3286-

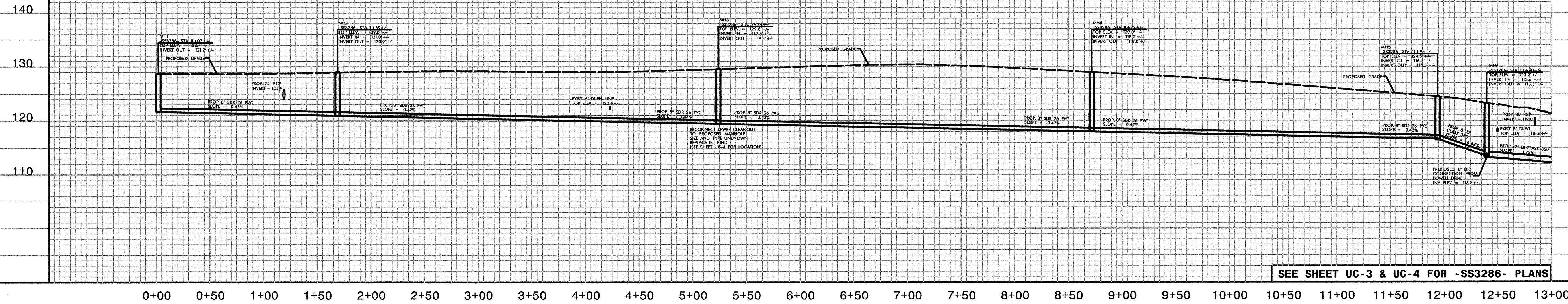
THESE PLANS ARE FOR INFORMATION ONLY.
 THE CITY OF ROCKY MOUNT IS RELOCATING
 THE UTILITIES AND SHOULD BE CONTACTED
 PRIOR TO BEGINNING CONSTRUCTION.

NOTES:

- USE THE TRENCH METHOD OF INSTALLATION FOR THE PROPOSED WATER AND SEWER LINE CONSTRUCTION (UNLESS OTHERWISE NOTED ON PLANS)
- PROVIDE THRUST RESTRAINT FOR PIPE & APPURTENANCES IN ACCORDANCE WITH THE CITY OF ROCKY MOUNT STANDARD SPECIFICATIONS AND DETAILS.
- PROVIDE 10' OF ENCASUREMENT ON CROSSINGS WITH LESS THAN MINIMUM COVER, ACCORDING TO NCDOT STANDARD SPECIFICATIONS SECTION 1505-5.
- ALL WATER AND SEWER LINE CONSTRUCTION SHALL BE IN ACCORDANCE WITH THE CITY OF ROCKY MOUNT STANDARD SPECIFICATIONS, AND NCDOT STANDARD SPECIFICATIONS SECTION 1500.
- ALL WATER METERS SHALL BE PLACED AS SHOWN ON THE PLANS AND PER CITY OF ROCKY MOUNT STANDARD NO. 5.5. ALL SERVICE LINES SHALL BE EXTENDED OR REPLACED IN-KIND TO SECURE A PROPER CONNECTION.
- NOTE: IT IS THE CONTRACTOR'S RESPONSIBILITY TO VERIFY ALL UTILITIES AND THEIR LOCATIONS AFFECTED BY THE CONSTRUCTION. THE CONTRACTOR SHALL PROTECT ALL UTILITIES DURING CONSTRUCTION IN ACCORDANCE WITH SECTION 105-8 OF THE NCDOT STANDARD SPECIFICATIONS.

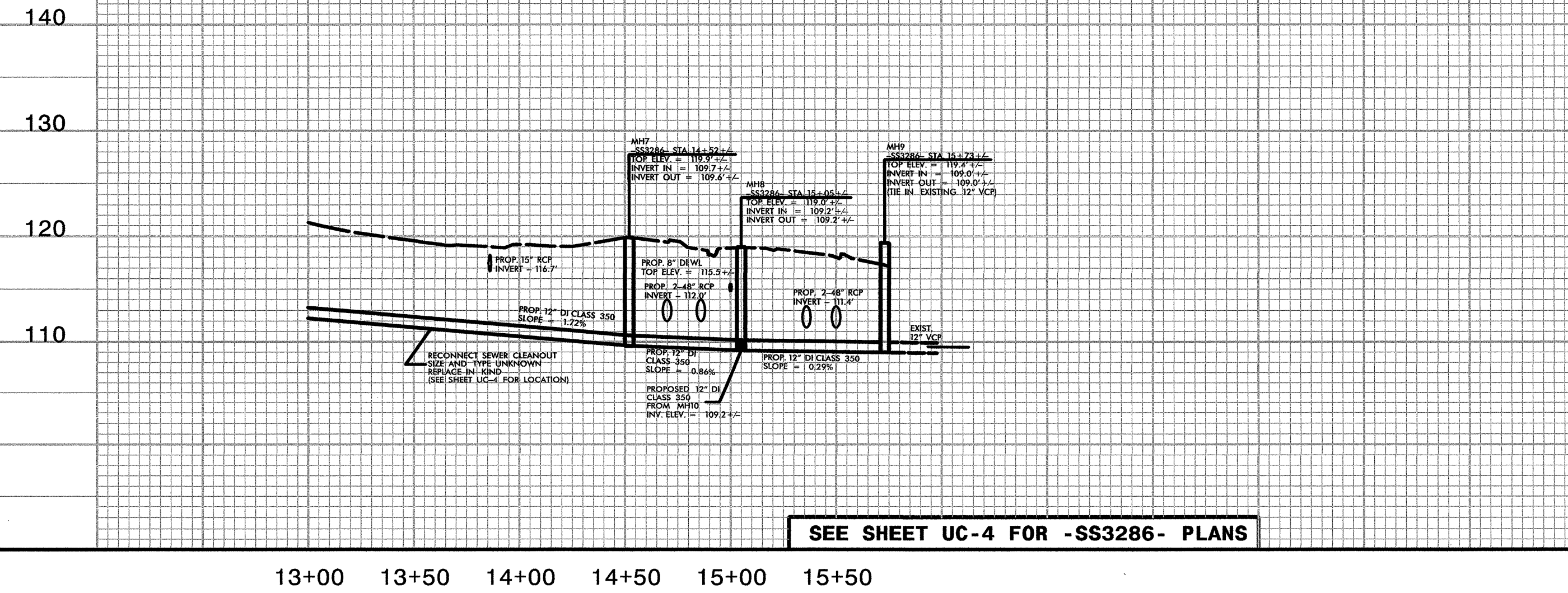
PROJECT REFERENCE NO.	40129	SHEET NO.	UC-8
DESIGNED BY:	JLT	NOT A CERTIFIED DOCUMENT AS TO THE ORIGINAL DOCUMENT BUT ONLY AS TO THE REVISIONS.	
DRAWN BY:	JLT		
CHECKED BY:	LGF		
APPROVED BY:			
REVISED:		THIS DOCUMENT ORIGINALLY ISSUED AND SEALED BY: JIMMY L. TERRY, JR. 35018 ON 06/06/72	
NORTH CAROLINA DEPARTMENT OF TRANSPORTATION			
UTILITIES ENGINEERING SECTION PHONE: (919) 250-4128 FAX: (919) 250-4119			
TGS ENGINEERS SUITE 141 975 WALNUT STREET CARY, NC 27511 PH (919) 319-8850 CORP. LICENSE NO.: C-0275			

UTILITY CONSTRUCTION PLANS ONLY
UTILITY CONSTRUCTION



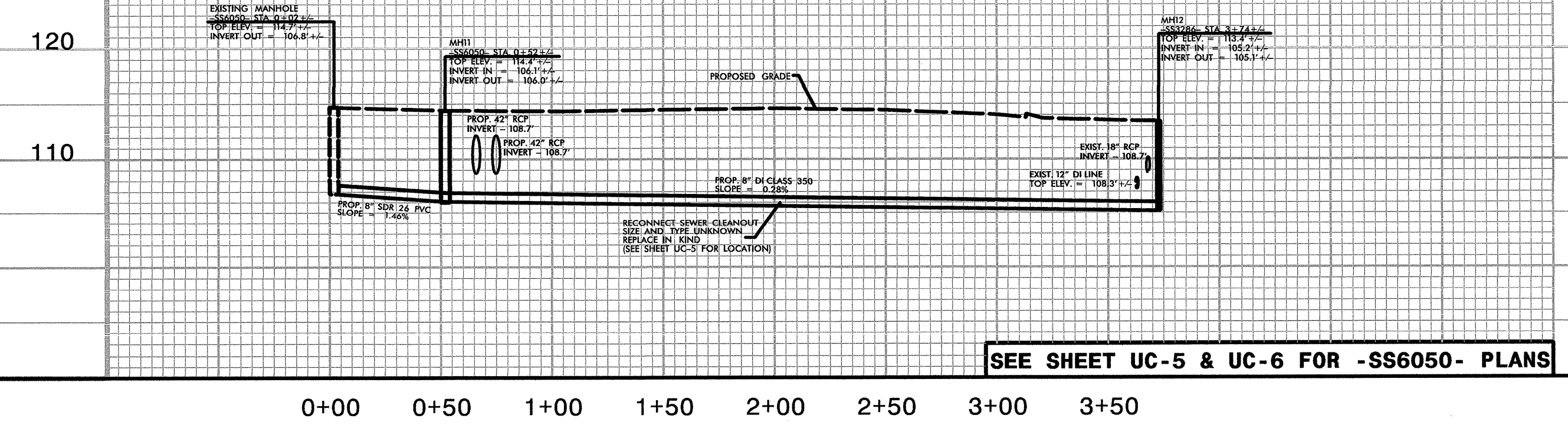
SEE SHEET UC-3 & UC-4 FOR -SS3286- PLANS

-SS3286-



SEE SHEET UC-4 FOR -SS3286- PLANS

-SS6050-



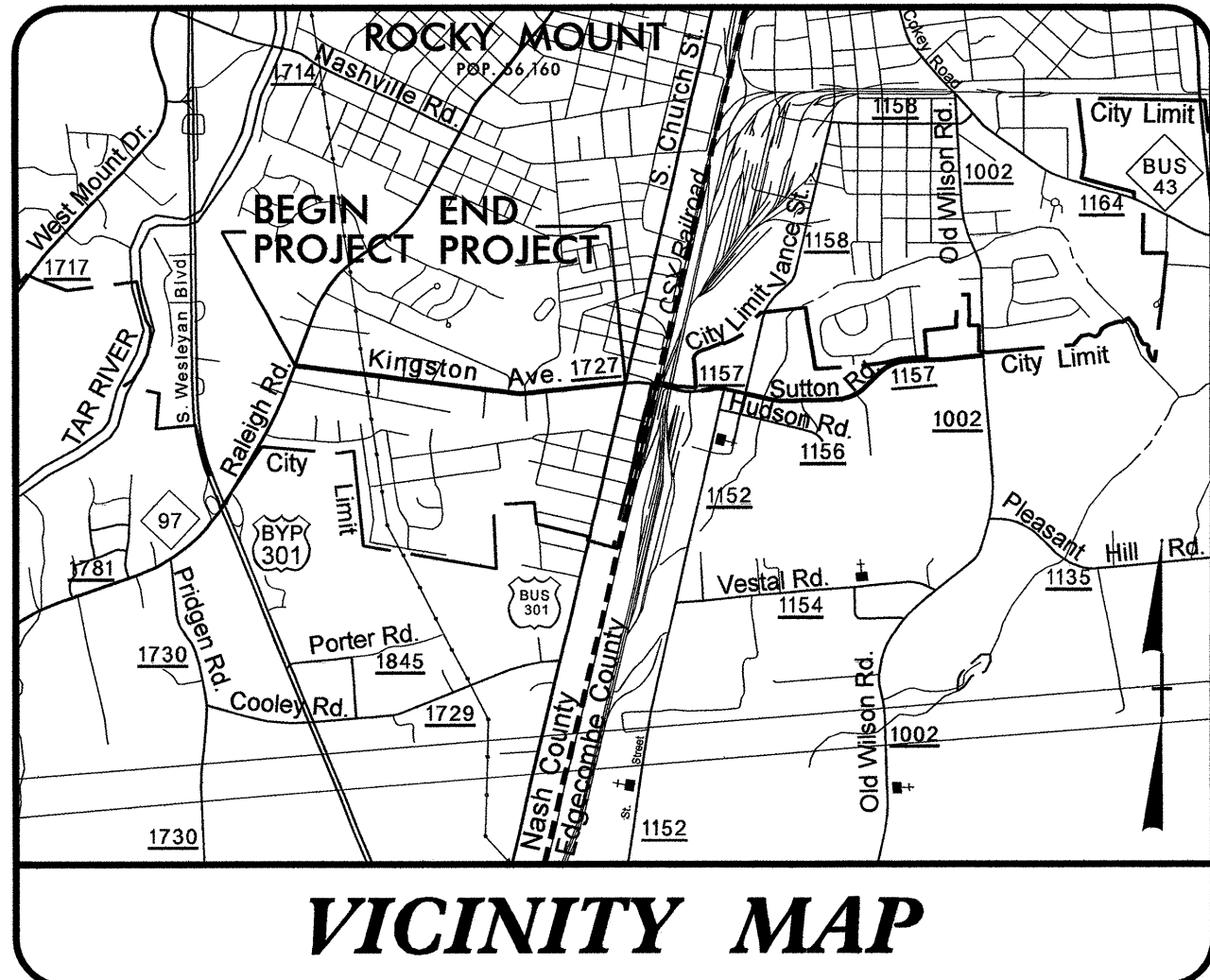
SEE SHEET UC-5 & UC-6 FOR -SS6050- PLANS

59
 58
 57
 56
 55
 54
 53
 52
 51
 50
 49
 48
 47
 46
 45
 44
 43
 42
 41
 40
 39
 38
 37
 36
 35
 34
 33
 32
 31
 30
 29
 28
 27
 26
 25
 24
 23
 22
 21
 20
 19
 18
 17
 16
 15
 14
 13
 12
 11
 10
 9
 8
 7
 6
 5
 4
 3
 2
 1

09/08/99

PROJECT: 40129

CONTRACT #:



VICINITY MAP

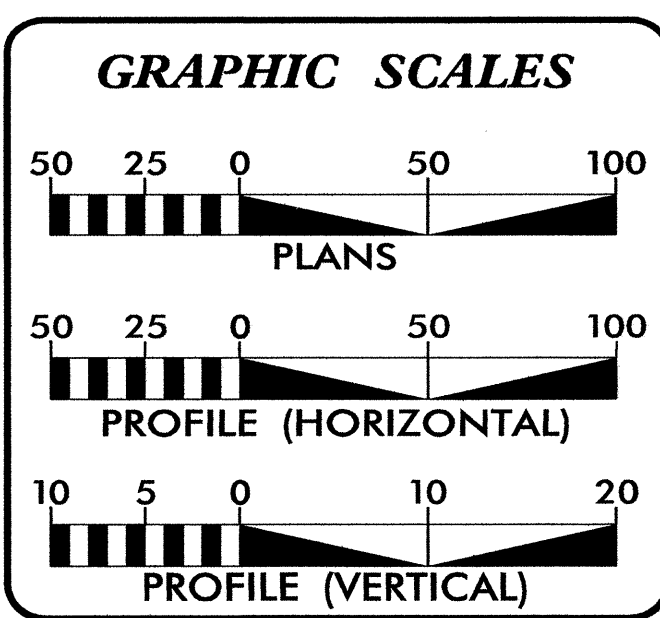
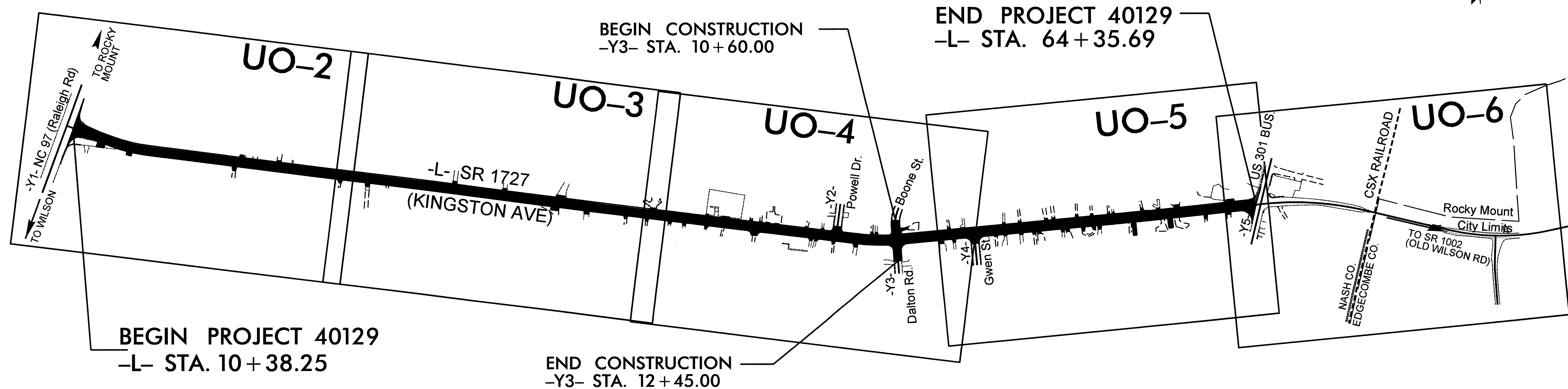
STATE OF NORTH CAROLINA
DIVISION OF HIGHWAYS

**UTILITIES BY OTHERS PLANS
NASH COUNTY**

**LOCATION: SR 1727 (KINGSTON AVE) IN NASH COUNTY
FROM NC 97 TO US 301BUS**


TYPE OF WORK: UTILITIES BY OTHERS

STATE WBS REFERENCE NOS.	SHEET NO.
40129	UO-1



INDEX OF SHEETS	
SHEET NO.	DESCRIPTION
UC-1	TITLE SHEET
UO-2 THRU UO-6	UTILITIES BY OTHERS PLAN SHEETS

UTILITY OWNERS ON PROJECT
(1) POWER - PROGRESS ENERGY
(2) POWER - CITY OF ROCKY MOUNT
(3) TELEPHONE - CENTURYLINK
(4) CABLE TV - SUDDENLINK
(5) NATURAL GAS - CITY OF ROCKY MOUNT

PLANS PREPARED BY:	PLANS PREPARED FOR:
 DAVIS-MARTIN-POWELL 6415 OLD PLANK ROAD HIGH POINT, NC 27265 PHONE: (336) 886-4821 FAX: (336) 886-4458 CORP. LICENSE NO.: F-0245	NCDOT DIVISION 4 NCDOT Contact: JERRY PAGE, PE DIVISION PROJECT MANAGER CITY OF ROCKY MOUNT City Contact: BRAD KERR, PE PROJECT MANAGER
2006 STANDARD SPECIFICATIONS	

\$\$\$ SYSTEM \$\$\$
 \$\$\$ DDGN \$\$\$
 \$\$\$ USERNAME \$\$\$

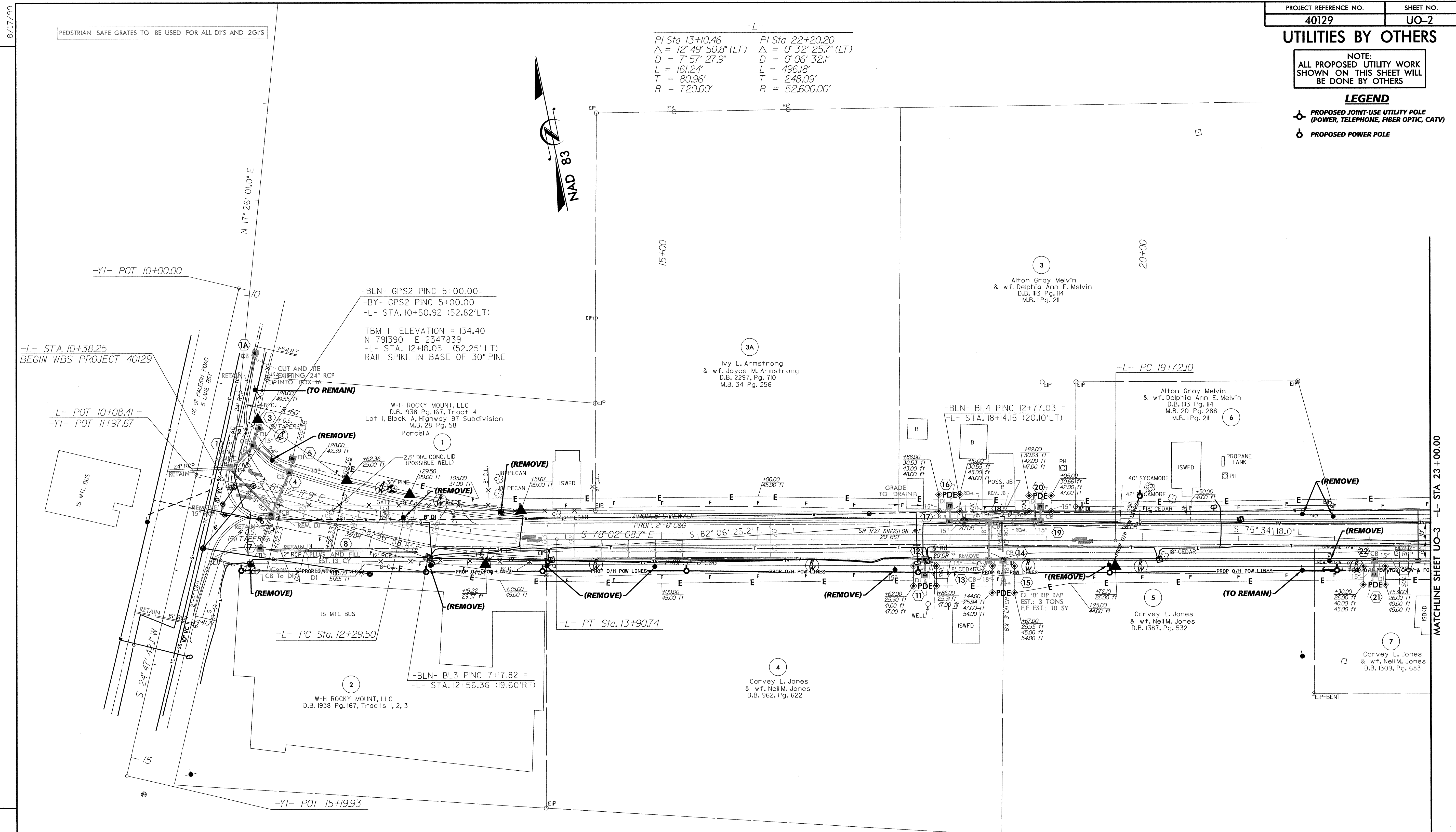
UTILITIES BY OTHERS

NOTE:
ALL PROPOSED UTILITY WORK
SHOWN ON THIS SHEET WILL
BE DONE BY OTHERS

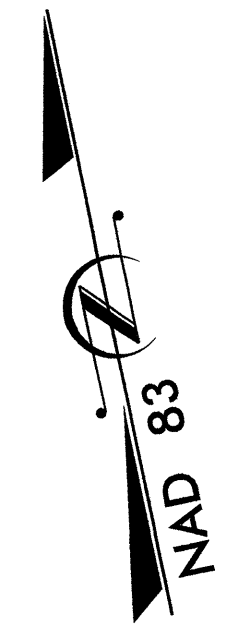
LEGEND

- ⊕ PROPOSED JOINT-USE UTILITY POLE (POWER, TELEPHONE, FIBER OPTIC, CATV)
- ⊙ PROPOSED POWER POLE

-L-
 PI Sta 13+10.46 PI Sta 22+20.20
 $\Delta = 12^\circ 49' 50.8" (LT)$ $\Delta = 0^\circ 32' 25.7" (LT)$
 $D = 7' 57' 27.9"$ $D = 0' 06' 32.1"$
 $L = 161.24'$ $L = 496.18'$
 $T = 80.96'$ $T = 248.09'$
 $R = 720.00'$ $R = 52,600.00'$



PEDSTRIAN SAFE GRATES TO BE USED FOR ALL DI'S AND 2GI'S



DATUM DESCRIPTION
 THE LOCALIZED COORDINATE SYSTEM DEVELOPED FOR THIS PROJECT IS BASED ON THE STATE PLANE COORDINATES ESTABLISHED BY OTHERS FOR MONUMENT "GPS 13"
 WITH NAD 1983/95 STATE PLANE GRID COORDINATES OF NORTHING: 790,623.39(1) EASTING: 2,353,010.42(1)
 THE AVERAGE COMBINED GRID FACTOR USED ON THIS PROJECT (GROUND TO GRID) IS: 0.99993418
 THE N.C. LAMBERT GRID BEARING AND LOCALIZED HORIZONTAL GROUND DISTANCE FROM "GPS 13" TO -L- POT 10+00.00 IS
 $N 81^\circ 58' 38.72" W$ 5,449.12(1)
 ALL LINEAR DIMENSIONS ARE LOCALIZED HORIZONTAL DISTANCES
 VERTICAL DATUM USED IS NVD 88

8/17/99
REVISIONS
 1
 2
 3
 4
 5
 6
 7
 8
 9
 10
 11
 12
 13
 14
 15
 16
 17
 18
 19
 20
 21
 22
 23
 24
 25
 26
 27
 28
 29
 30
 31
 32
 33
 34
 35
 36
 37
 38
 39
 40
 41
 42
 43
 44
 45
 46
 47
 48
 49
 50

MATCHLINE SHEET UO-3 -L- STA 23 + 00.00

8/17/99

PEDSTRIAN SAFE GRATES TO BE USED FOR ALL DI'S AND 2GI'S

PI Sta 22+20.20	PI Sta 26+35.57	PI Sta 31+11.47
$\Delta = 0^\circ 32' 25.7''$ (LT)	$\Delta = 0^\circ 57' 30.5''$ (RT)	$\Delta = 0^\circ 40' 20.4''$ (LT)
$D = 0^\circ 06' 32.1''$	$D = 0^\circ 17' 11.3''$	$D = 0^\circ 06' 32.1''$
$L = 496.18'$	$L = 334.57'$	$L = 617.23'$
$T = 248.09'$	$T = 167.29'$	$T = 308.62'$
$R = 52,600.00'$	$R = 20,000.00'$	$R = 52,600.00'$

PROJECT REFERENCE NO. 40129	SHEET NO. UO-3
--------------------------------	-------------------

UTILITIES BY OTHERS

NOTE:
ALL PROPOSED UTILITY WORK SHOWN ON THIS SHEET WILL BE DONE BY OTHERS

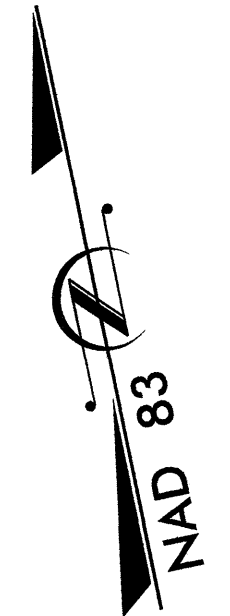
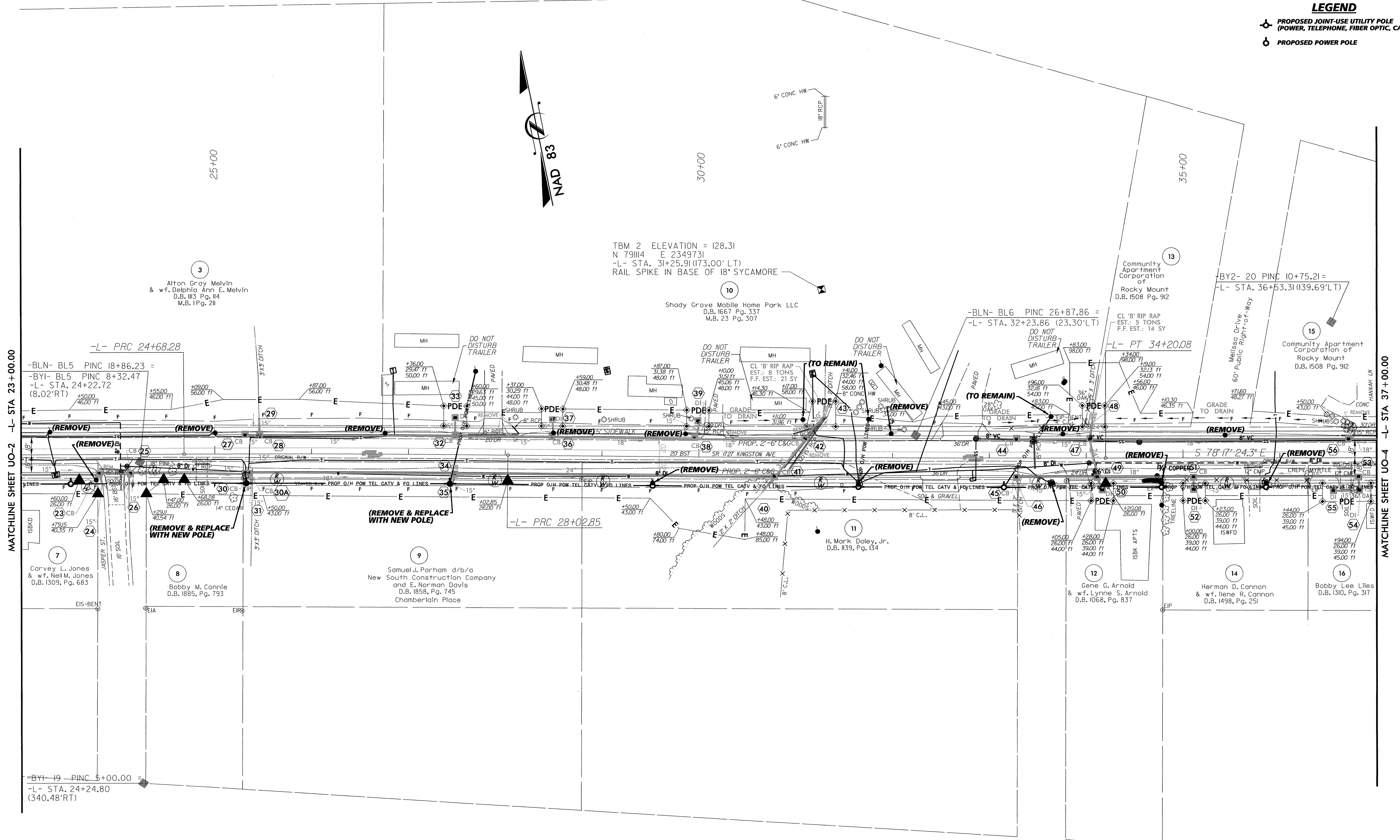
LEGEND

- PROPOSED JOINT-USE UTILITY POLE (POWER, TELEPHONE, FIBER OPTIC, CATV)
- PROPOSED POWER POLE

REVISIONS

MATCHLINE SHEET UO-2 -L- STA 23+00.00

MATCHLINE SHEET UO-4 -L- STA 37+00.00



TBM 2 ELEVATION = 128.31
 N 791114 E 2349731
 -L- STA. 31+25.91(173.00' LT)
 RAIL SPIKE IN BASE OF 18" SYCAMORE

Shady Grove Mobile Home Park LLC
 D.B. 1667 Pg. 337
 M.B. 23 Pg. 307

Community Apartment Corporation of Rocky Mount D.B. 1508 Pg. 912

-BY2- 20 PINC 10+75.21 =
 -L- STA. 36+53.31(139.69' LT)

Community Apartment Corporation of Rocky Mount D.B. 1508 Pg. 912

H. Mark Doley, Jr.
 D.B. 1139, Pg. 134

Gene G. Arnold & w.f. Lynne S. Arnold
 D.B. 1068, Pg. 837

Herman D. Cannon & w.f. Ilene R. Cannon
 D.B. 1498, Pg. 251

Bobby Lee Liles
 D.B. 1310, Pg. 311

Samuel J. Parham d/b/a New South Construction Company and E. Norman Davis
 D.B. 1858, Pg. 745
 Chamberlain Place

Bobby M. Connie
 D.B. 1885, Pg. 793

Carvey L. Jones & w.f. Neil M. Jones
 D.B. 1309, Pg. 683

8/17/99

PROJECT REFERENCE NO.	SHEET NO.
40129	UO-4

UTILITIES BY OTHERS

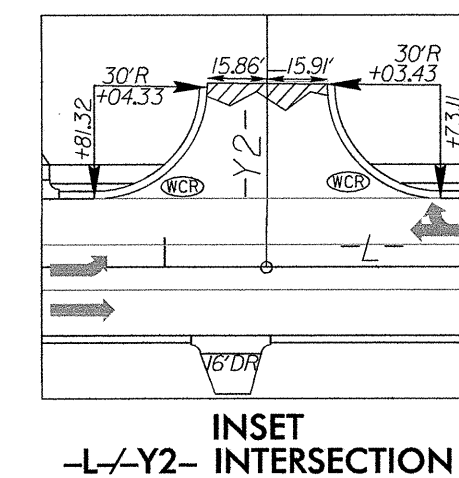
NOTE:
ALL PROPOSED UTILITY WORK
SHOWN ON THIS SHEET WILL
BE DONE BY OTHERS

LEGEND

⊕ PROPOSED JOINT-USE UTILITY POLE
(POWER, TELEPHONE, FIBER OPTIC, CATV)

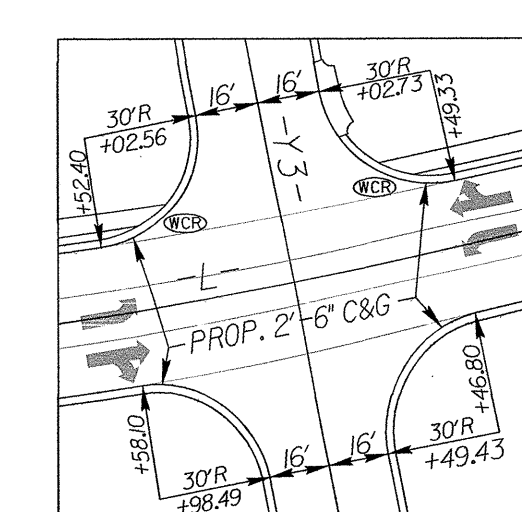
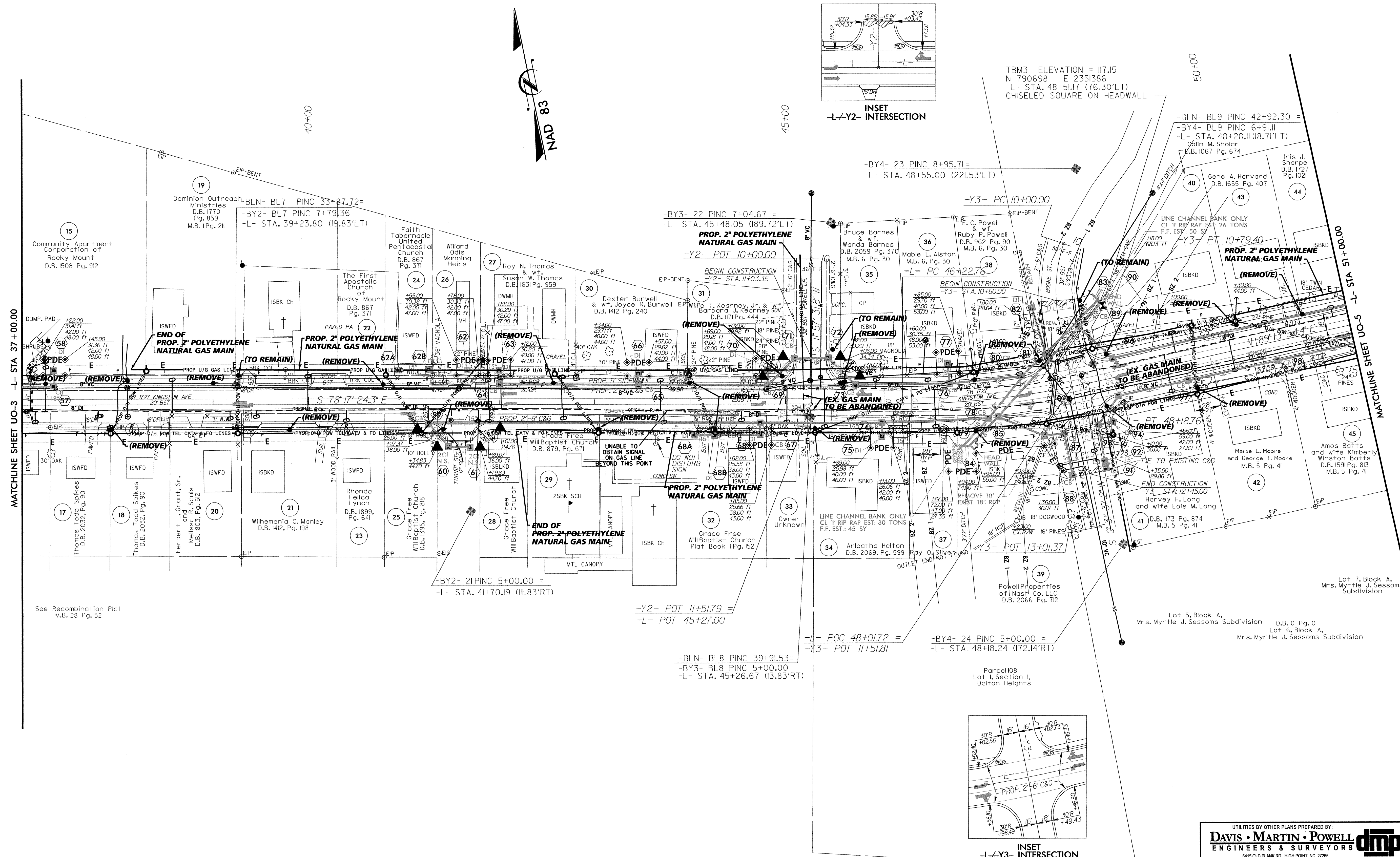
-L-
PI Sta 47+21.15
Δ = 12' 28" 41.4" (LT)
D = 6' 21" 58.3"
L = 196.01'
T = 98.39'
R = 900.00'

-Y3-
PI Sta 10+40.63
Δ = 29' 59" 41.2" (LT)
D = 37' 46" 32.4"
L = 79.40'
T = 40.63'
R = 151.67'



INSET
-L-Y2- INTERSECTION

TBM3 ELEVATION = 117.15
N 790698 E 2351386
-L- STA. 48+51.17 (76.30'LT)
CHISELED SQUARE ON HEADWALL



INSET
-L-Y3- INTERSECTION

REVISIONS

MATCHLINE SHEET UO-3 -L- STA. 37+00.00

MATCHLINE SHEET UO-5 -L- STA. 51+00.00

UTILITIES BY OTHER PLANS PREPARED BY:

DAVIS • MARTIN • POWELL 
ENGINEERS & SURVEYORS

6415 OLD PLANK RD, HIGH POINT, NC 27265
PHONE: (336)884-4821 FAX: (336)884-4488
WWW.DMP-INC.COM LICENSE: F4045

8/17/99

PEDestrian SAFE GRATES TO BE USED FOR ALL DI'S AND 2GI'S

PROJECT REFERENCE NO.	SHEET NO.
40129	UO-5

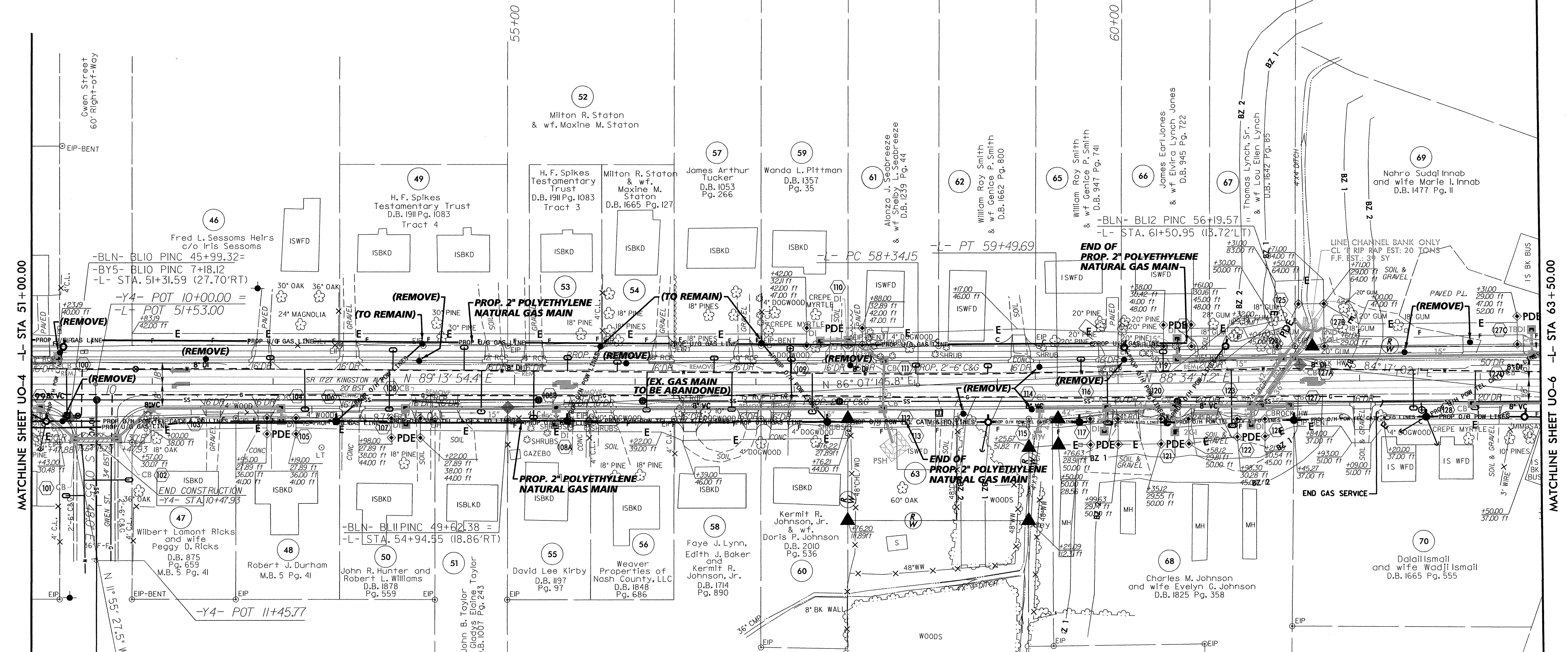
UTILITIES BY OTHERS

NOTE:
ALL PROPOSED UTILITY WORK
SHOWN ON THIS SHEET WILL
BE DONE BY OTHERS

LEGEND

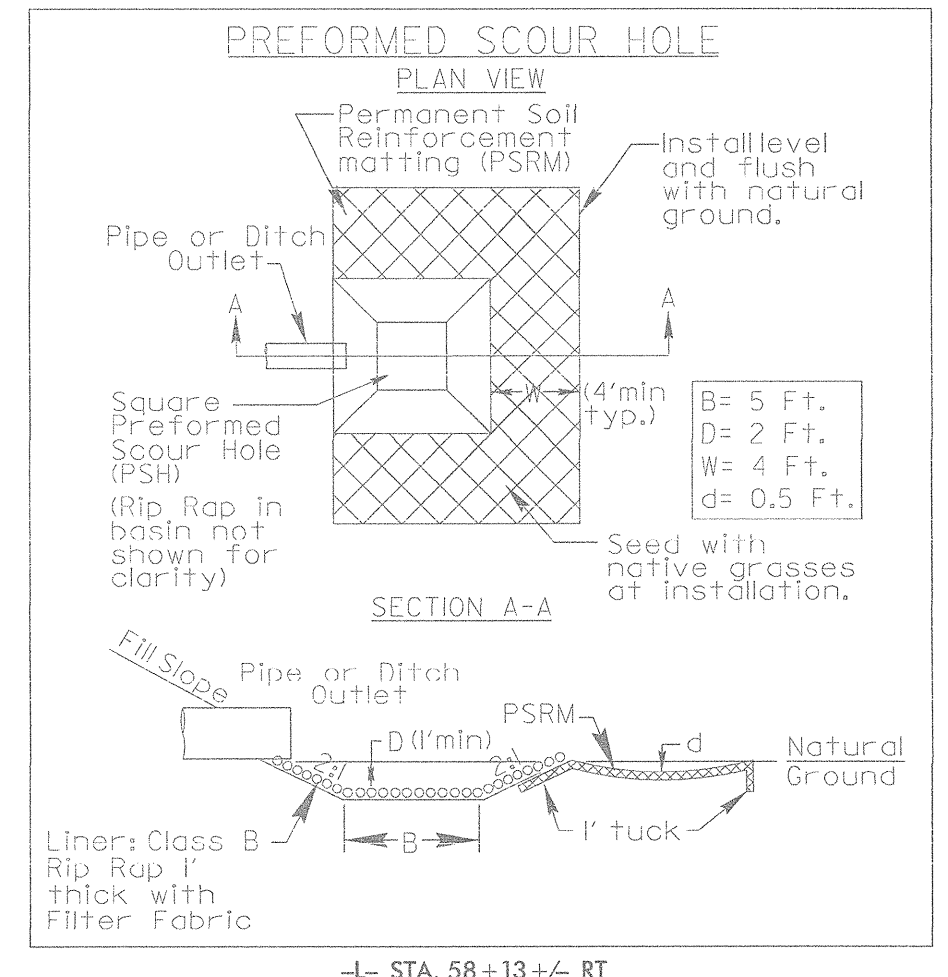
PROPOSED JOINT-USE UTILITY POLE
(POWER, TELEPHONE, FIBER OPTIC, CATV)

-L-
PI Sta 58+91.92
Δ = 0° 39' 43.1" (LT)
D = 0° 34' 22.6"
L = 115.54'
T = 57.77'
R = 10,000.00'



MATCHLINE SHEET UO-4 -L- STA 51+00.00

MATCHLINE SHEET UO-6 -L- STA 63+50.00



-L- STA. 58+13+/- RT

REVISIONS

69
68
67
66
65
64
63
62
61
60
59
58
57
56
55
54
53
52
51
50
49
48
47
46
45
44
43
42
41
40
39
38
37
36
35
34
33
32
31
30
29
28
27
26
25
24
23
22
21
20
19
18
17
16
15
14
13
12
11
10
9
8
7
6
5
4
3
2
1

UTILITIES BY OTHER PLANS PREPARED BY:
DAVIS • MARTIN • POWELL
ENGINEERS & SURVEYORS
6415 OLD PLANK RD., HIGH POINT, NC 27265
PHONE: (336)886-4821 FAX: (336)886-4458
WWW.DMP-NC.COM LICENSE: F-0245

8/17/99

REVISIONS

PROJECT REFERENCE NO.	SHEET NO.
40129	UO-6

UTILITIES BY OTHERS

NOTE:
ALL PROPOSED UTILITY WORK
SHOWN ON THIS SHEET WILL
BE DONE BY OTHERS

LEGEND

PROPOSED JOINT-USE UTILITY POLE
(POWER, TELEPHONE, FIBER OPTIC, CATV)

-L-		-Y6-	
PI Sta 67+00.97	PI Sta 75+48.94	PI Sta 11+47.59	
$\Delta = 19^{\circ} 27' 13.0''$ (RT)	$\Delta = 25^{\circ} 41' 40.7''$ (LT)	$\Delta = 5^{\circ} 41' 33.9''$ (LT)	
D = 4' 05' 33.2"	D = 5' 40' 22.3"	D = 14' 36' 58.6"	
L = 475.34'	L = 452.94'	L = 38.95'	
T = 239.98'	T = 230.34'	T = 19.49'	
R = 1,400.00'	R = 1,010.00'	R = 392.00'	



MATCHLINE SHEET UO-5 -L- STA 63+50.00

TBM4 ELEVATION = 113.04
N 790736 E 2352985
-Y5- STA. 11+34.38 (32.26'RT)
CHISELED SQUARE IN HEADWALL

- 1 REMOVE EXIST CB COLLAR AND EXTEND EXIST 18" RCP (4'+/-)
- 2 TBJB w/MH (30)
- 3 REMOVE EXIST JB
- 4 REMOVE
- 5 REMOVE EXIST CB
- 6 REMOVE 28' +/- EXIST 18" RCP

