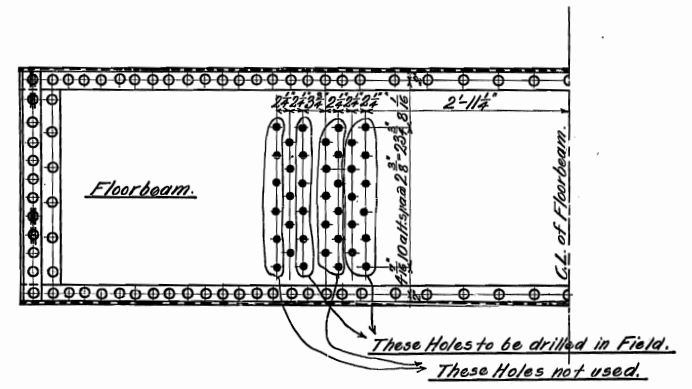


Wanted:  
2 Stiffners Mark A1.  
2 " " " A2.



Note! Old Holes in Floorbeam Web exposed to View must be plugged up in Field.

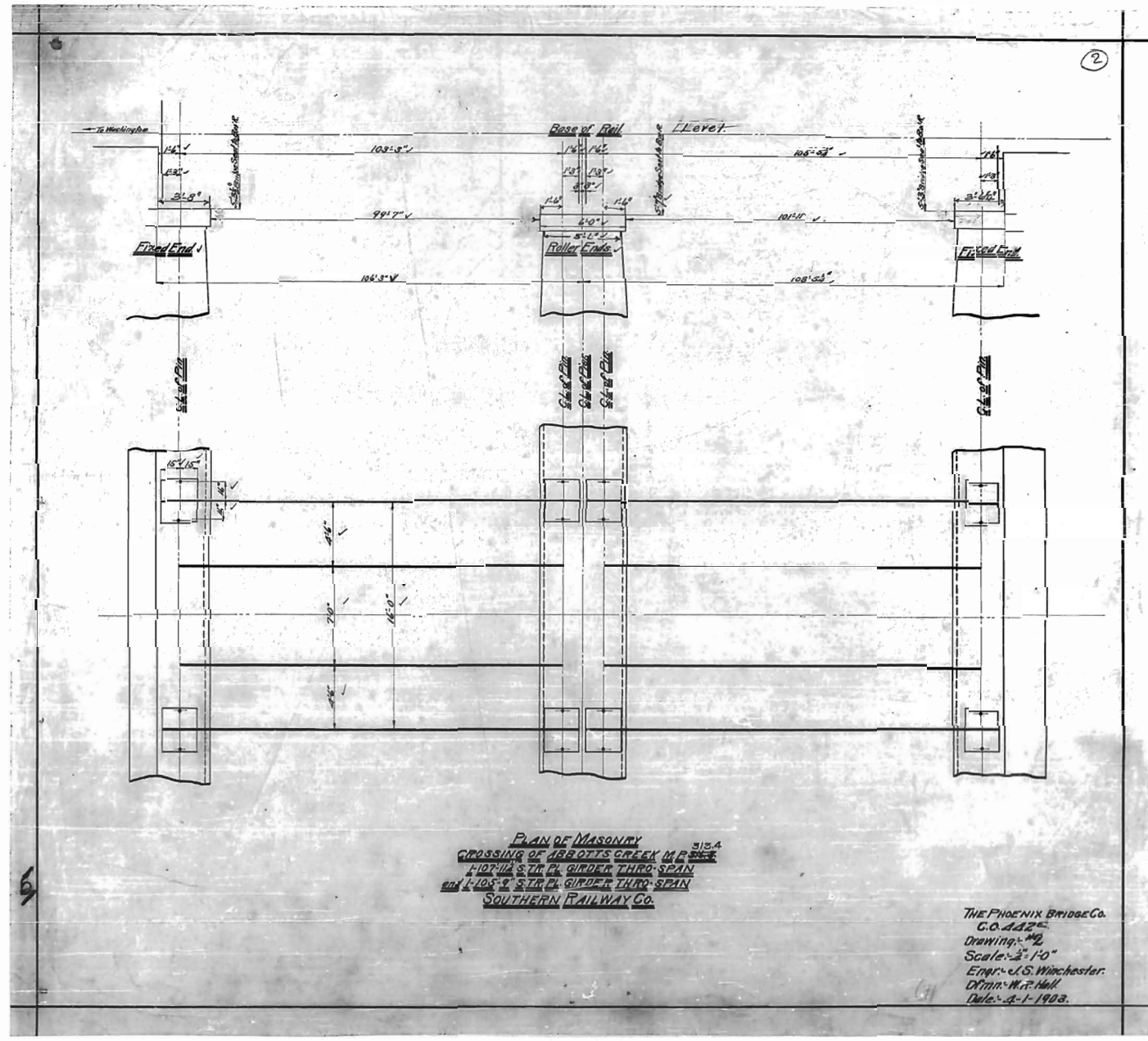
**Revised Drawing.**

Stringer Stiffners:  
for Connection of Stringers to Floorbeam  
made 3'-9" from C.L. of Floorbeam to Centre of Stringer connection.  
Abbott's Creek Crossing.  
Southern Railway Co.

Material Medium Steel.  
Holes 1/8", except as noted.  
Shop Painting: One Coat of Lowe Bros' Red Lead Metal Preservative B.

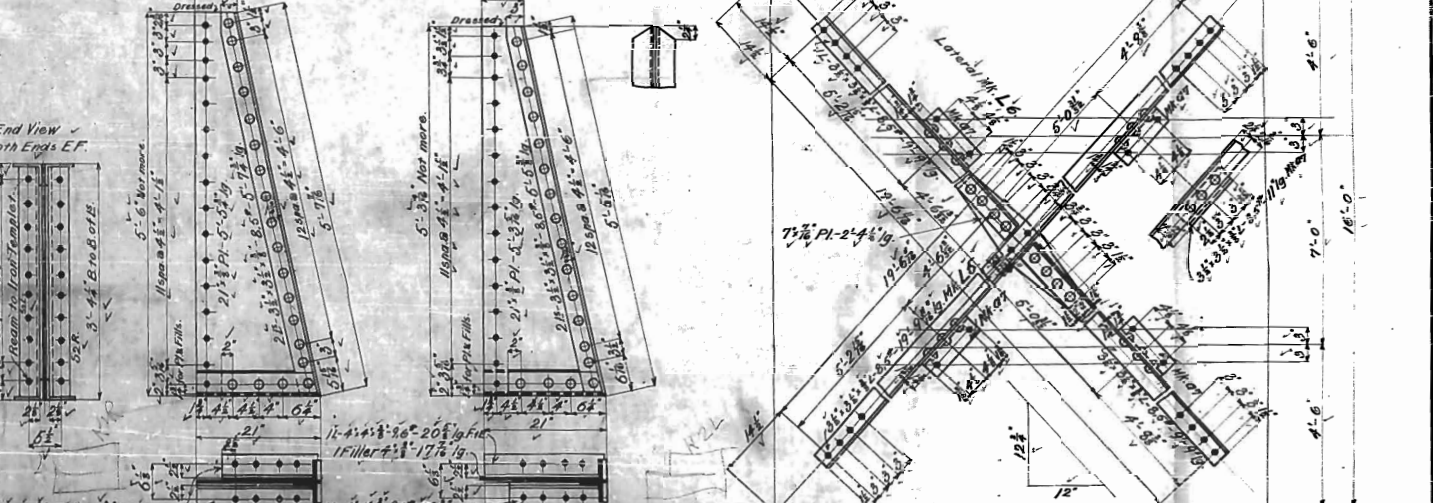
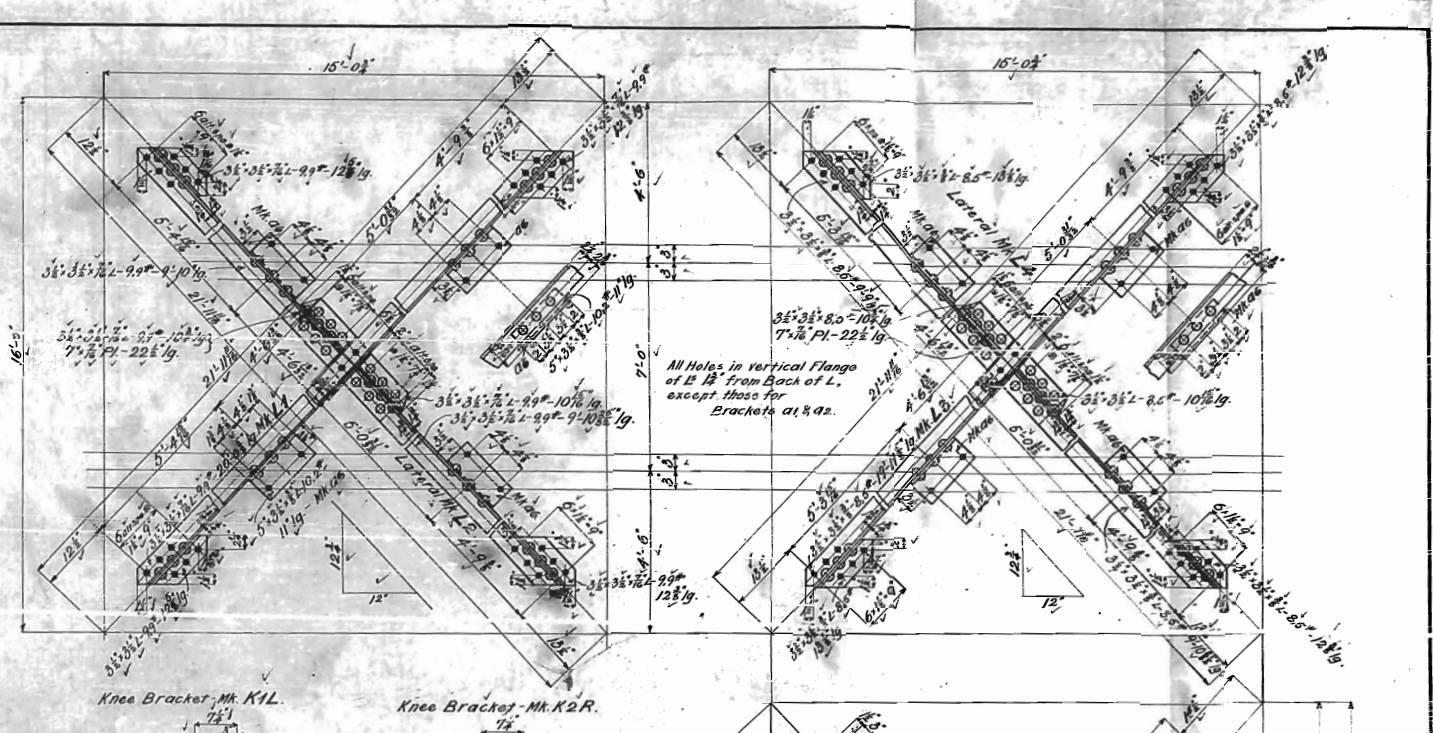
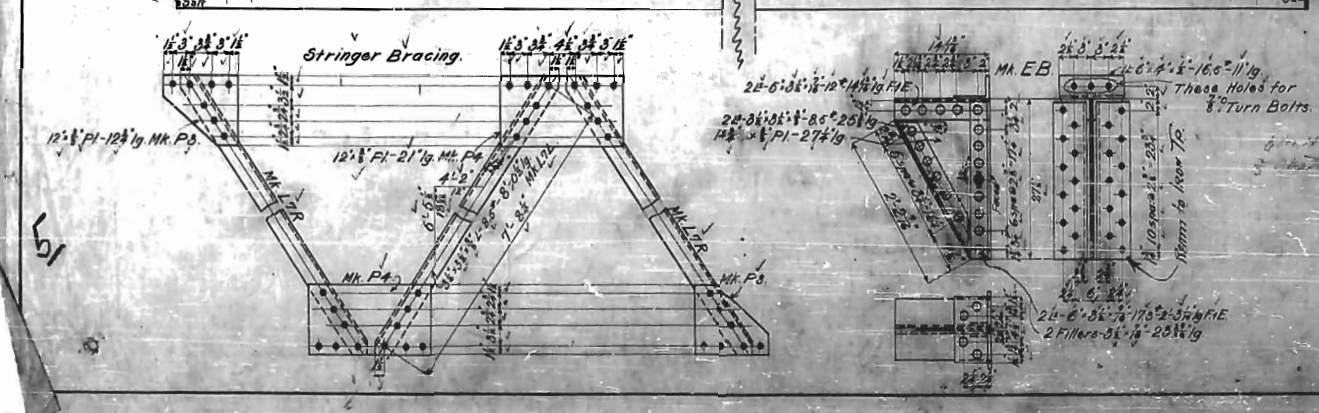
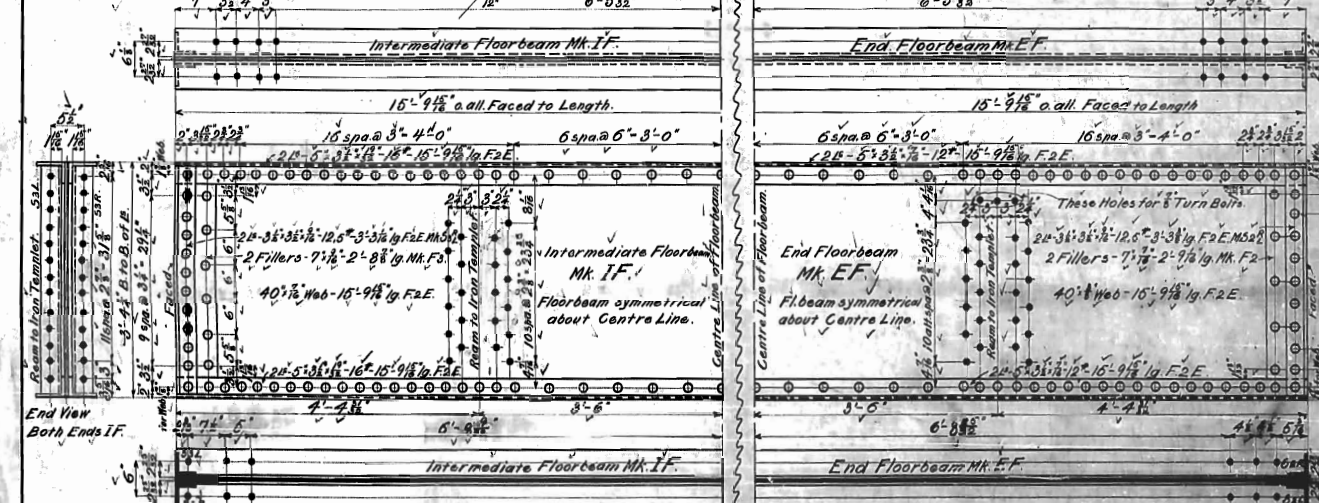
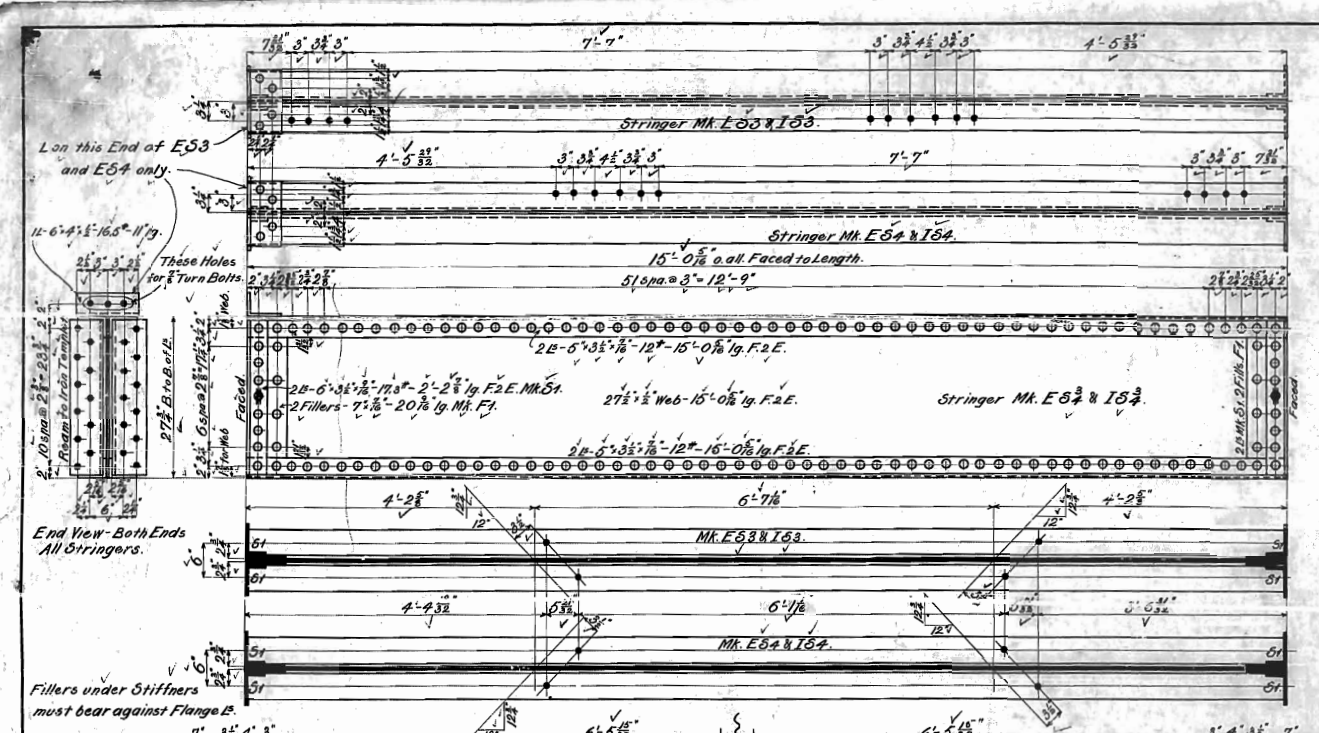
North Boudel Trail

The Phoenix Bridge Co.  
Tool Order No. 983.  
Drawing No. 1.  
Scale: 1" = 1'-0".  
Engineer J.S. Winchester.  
Draftsman Einar Eriksen.  
Date: September 3rd 1903.



PLAN OF MASONRY  
 CROSSING OF ABBOTT'S CREEK M.R. BRIDGE  
 102'-8" ST. G. GIRDER THRO-SPAN  
 99'-7" ST. G. GIRDER THRO-SPAN  
 SOUTHERN RAILWAY CO.

THE PHOENIX BRIDGE CO.  
 C.O. 442  
 Drawing: 192  
 Scale: 3/4" = 1'-0"  
 Engr.: J.S. Winchester  
 D.M.: W.T. Hall  
 Date: 3-1-1903.



Wanted:

6 End Floorbeams	MK EF	4 Stringer Laterals	MK L1R
18 Intern	IF	7	L7L
2 End Stringers	E53	14 Gusset Plates	P3
2	E54	14	P4
8 Intern	E57	12 End Brackets	EB
5	E58	20 Knee Brackets	K1L
2 Laterals	L1	20	K1R
2	L2	4	K2L
2	L3	4	K2R
2	L4		
2	L5		
3	L6		

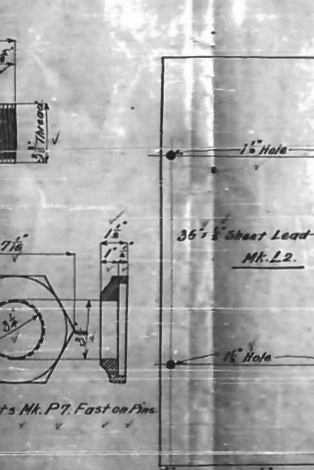
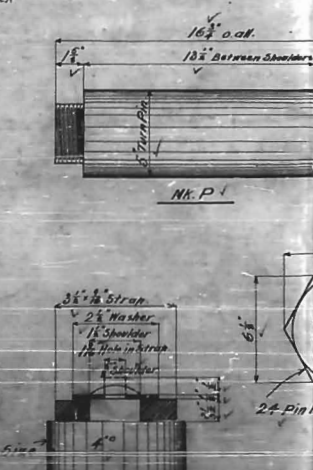
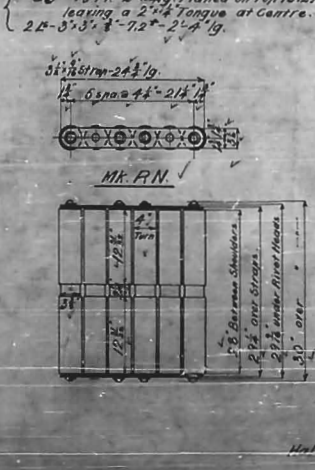
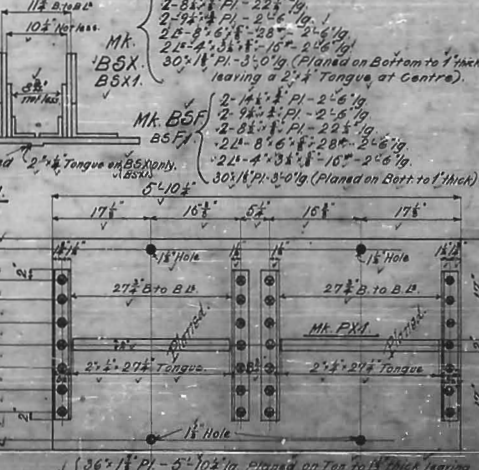
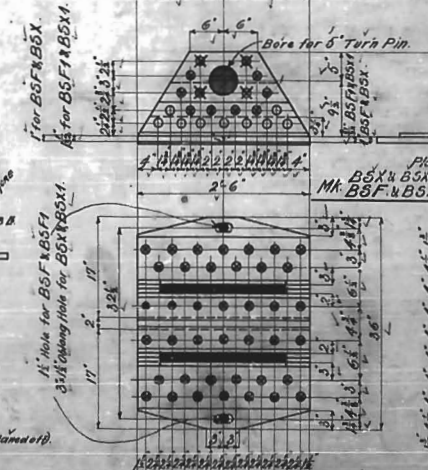
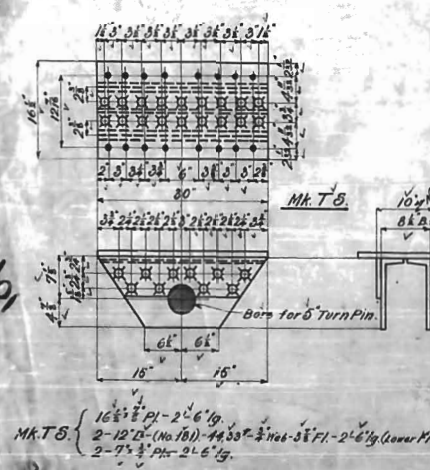
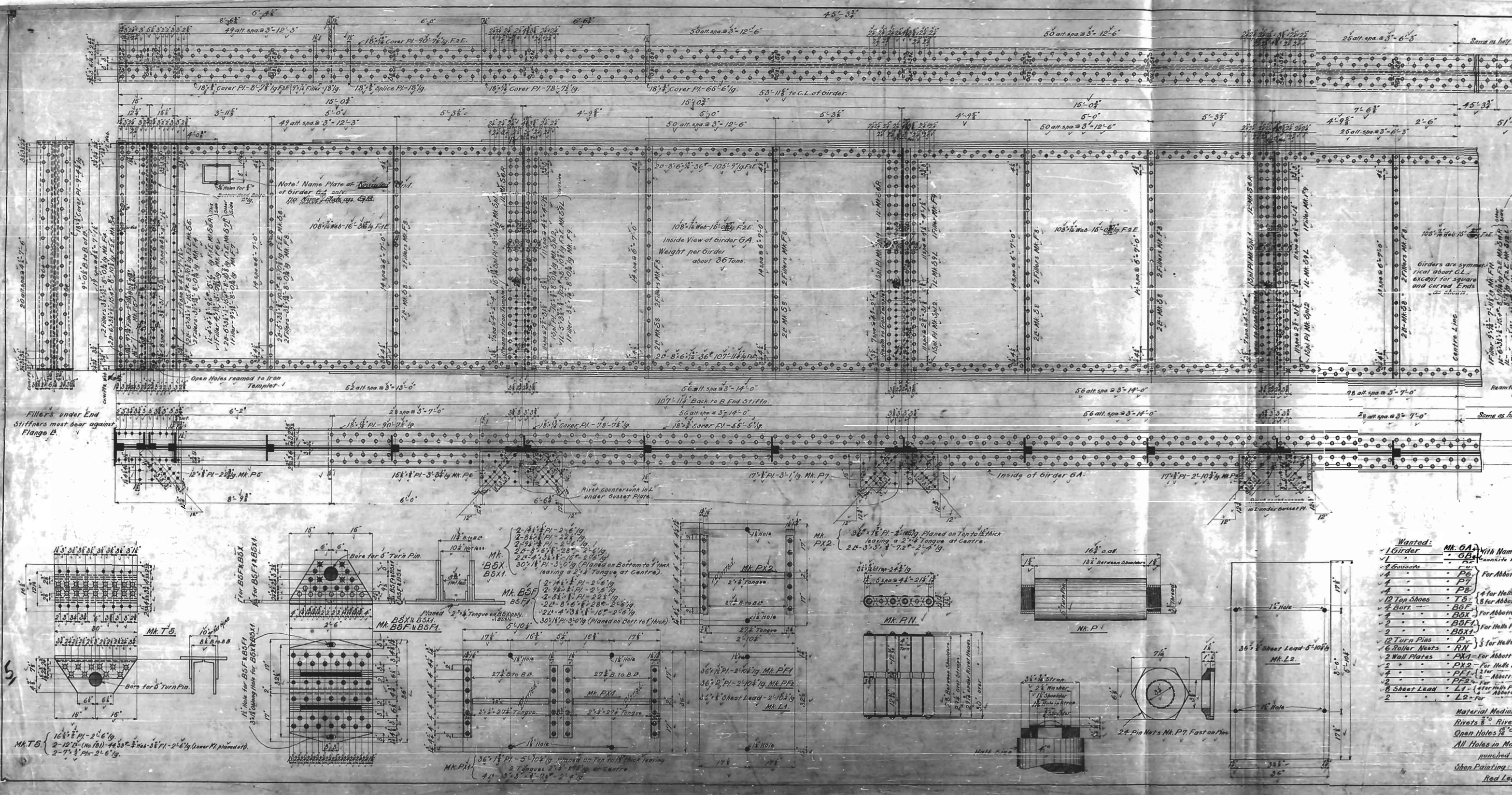
Stringers, Floorbeams & Laterals for  
Abbotts Creek & Hells Point Crossings.  
Southern Railway Co.

Material Medium Steel  
Sixes to River Steel  
Open Holes 1/2"  
All Holes punched to fit size 1/2" except those  
marked "Reamed to fit" or "Reamed to fit"  
Shop Painting: One coat of Low's Best Red Lead  
metal preservative A.

The Phoenix Bridge Co.  
C.O. No. 442E  
Drawing No. 3  
Scale: 1"-1'-0"  
Engineer J.S. Winchester  
Draftsman Edgar Erikson  
Date: April 17th 1908





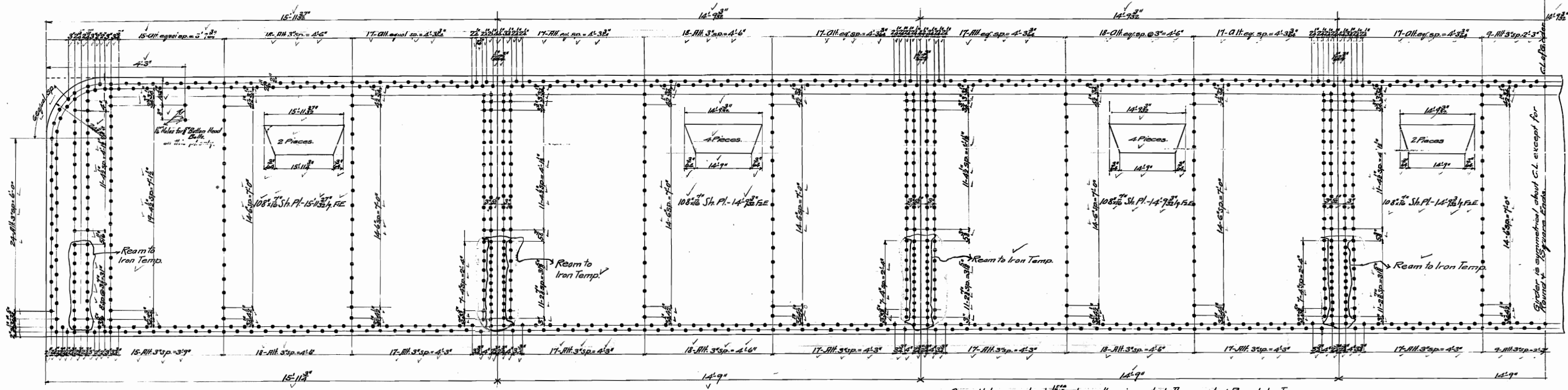


- Wanted:**
- 1 Girder - MK 6A With Name
  - 1 - MK 6B With Name
  - 1 Gusset - MK 6C For Abbott
  - 1 - MK 6D For Abbott
  - 1 - MK 6E For Abbott
  - 12 Top Shoes - MK 6F 4 for Mulls
  - 6 Bottom - MK 6G 8 for Mulls
  - 1 - MK 6H For Abbott
  - 1 - MK 6I For Mulls
  - 2 - MK 6J For Mulls
  - 12 Turn Pins - MK 6K 3 for Mulls
  - 6 Roller Nuts - MK 6L For Mulls
  - 2 Wall Plates - MK 6M For Mulls
  - 2 - MK 6N For Mulls
  - 4 - MK 6O For Mulls
  - 2 - MK 6P For Mulls
  - 8 Sheet Lead - MK 6Q 1 for Mulls
  - 2 - MK 6R For Mulls
- Material Medium Rivets 5/8" Rivet Open Holes 1/2" All Holes in Material punched & Shear Painting: On Red Lead**

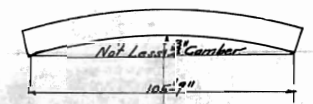
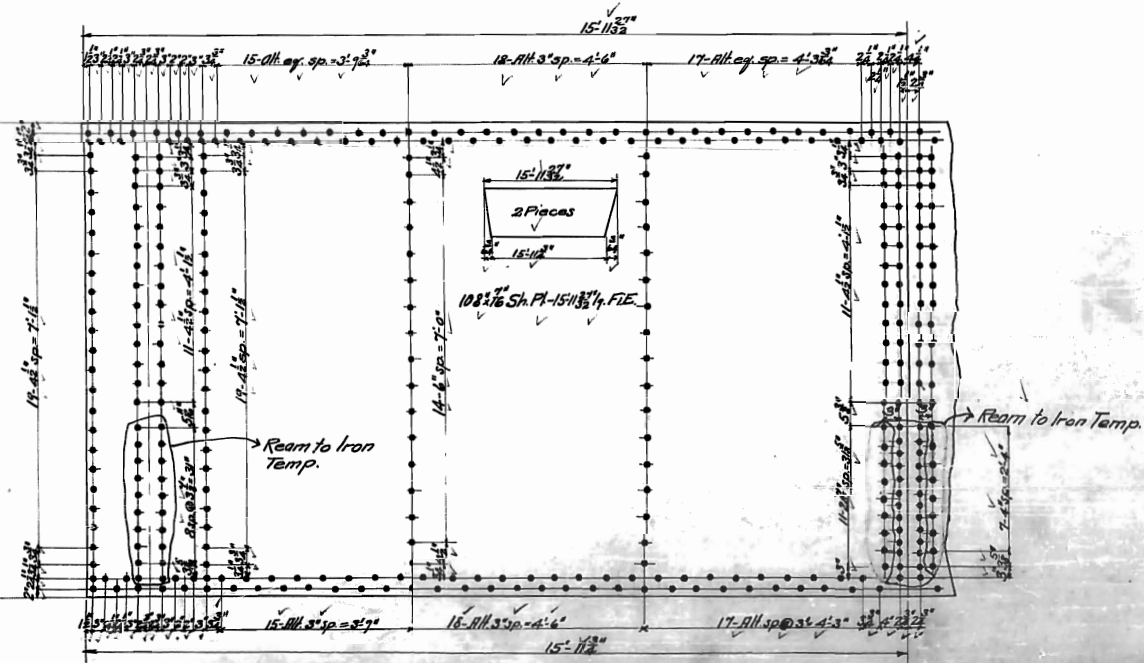






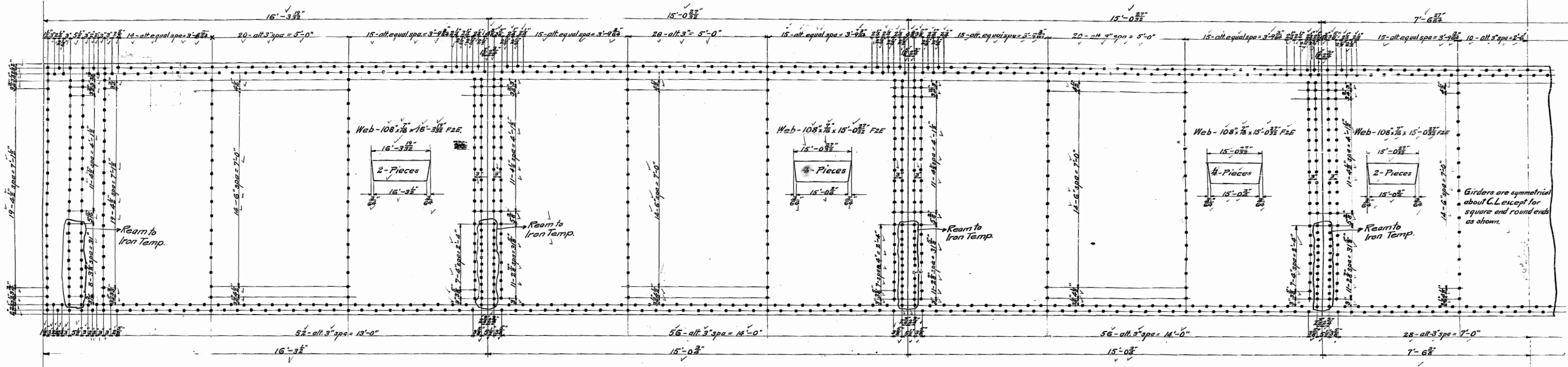


Open Holes punched  $\frac{11}{16}$ " unless otherwise noted. (Those marked Ream to Iron Temp. punched small & reamed to size.)

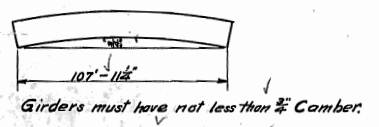
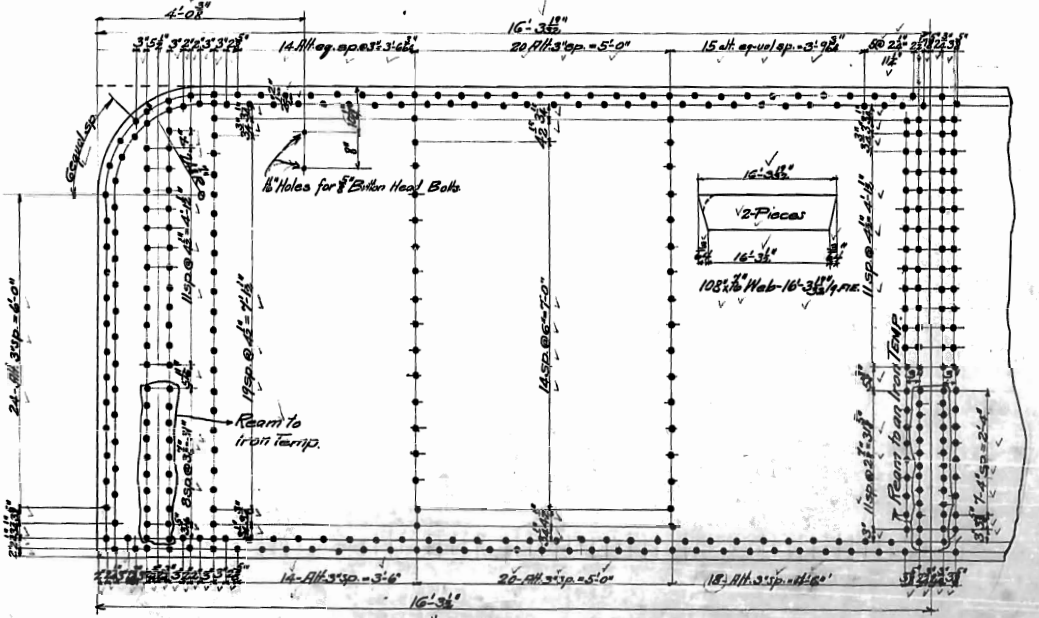


Web Plates  
 1-105'-9" S. T. S. T. Two Pl. Girder Span  
 Abbots Creek Bridge M.P. 313.4  
 Southern Railway Co.

The Phoenix Bridge Co.  
 C.O. #442  
 Drawing #9  
 Scale 3/4" = 1'-0"  
 Eng. J.S. Winchester  
 May 27-1903  
 Moorman.



All Open Holes punched  $\frac{1}{8}$  unless otherwise noted. (Room to Iron Temp.) to be punched small & reamed.



Web Plates  
 for 1-107'-11 $\frac{1}{2}$ " o.c. all S.T. Thr. Pl. Girder Spans  
 Abbott Creek Crossing M.P. 313.4  
 SOUTHERN RAILWAY CO.

The Phoenix Bridge Co.  
 C.O. 442  
 Drawing No. 10  
 Scale: 1" = 1'-0"  
 Engineer: J. S. Winchester  
 Draftsman: Parker  
 Date: May 20<sup>th</sup> 1903

