

FILE 519 348

Approved
Aug 25, 06

pin 5 8
313A

Assumed Live Load ESS

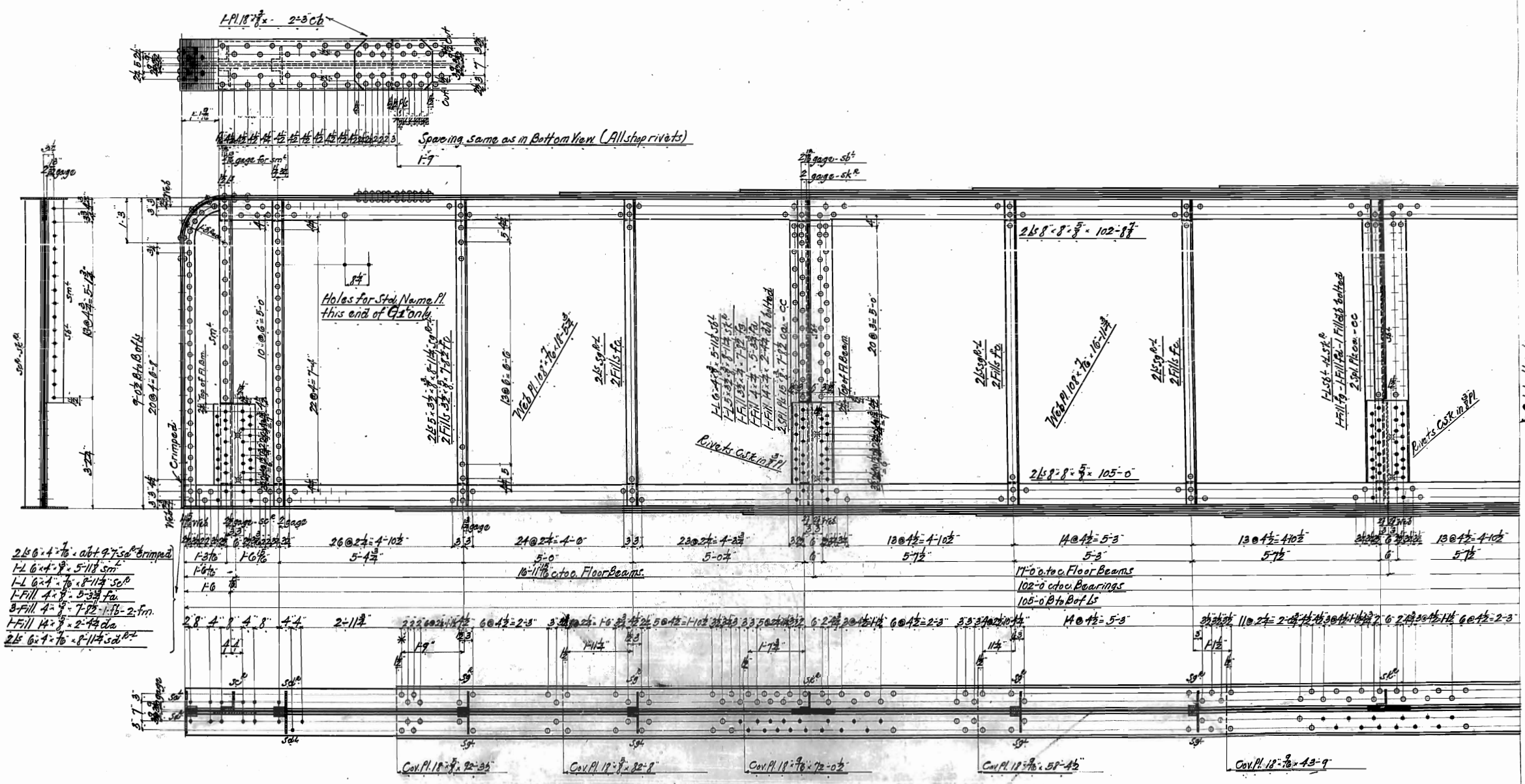
Truss	1800
Floor	600
Track	400
Total	2800 per lin. ft.

Assumed Dead Load

Trusses	1800
Floor	600
Track	400
Total	2800 per lin. ft.

Specifications - to A 102 except ESS L.
MATERIAL - MEDIUM C.H. STEEL
RIVETS - 1/2" dia. notched to 9/16"
RIVETS - 3/8" dia.
Refer to R.R. Co's Plan dated June 22, 1906.
Revised Aug 25, 06

SOUTHERN RAILWAY CO.
BRIDGE OVER ABBOTT CREEK.
M. P. 313A
2-S.T. THRO. PL. GIRDER SPANS 102'-6" & 90'-4"
STRESS SHEET
Scale 1/8" = 1'-0"
Inquiry No. E28099
Order No. 837
American Bridge Co.
New York Office
42 Broadway, N.Y. City
Drawing No. B1337

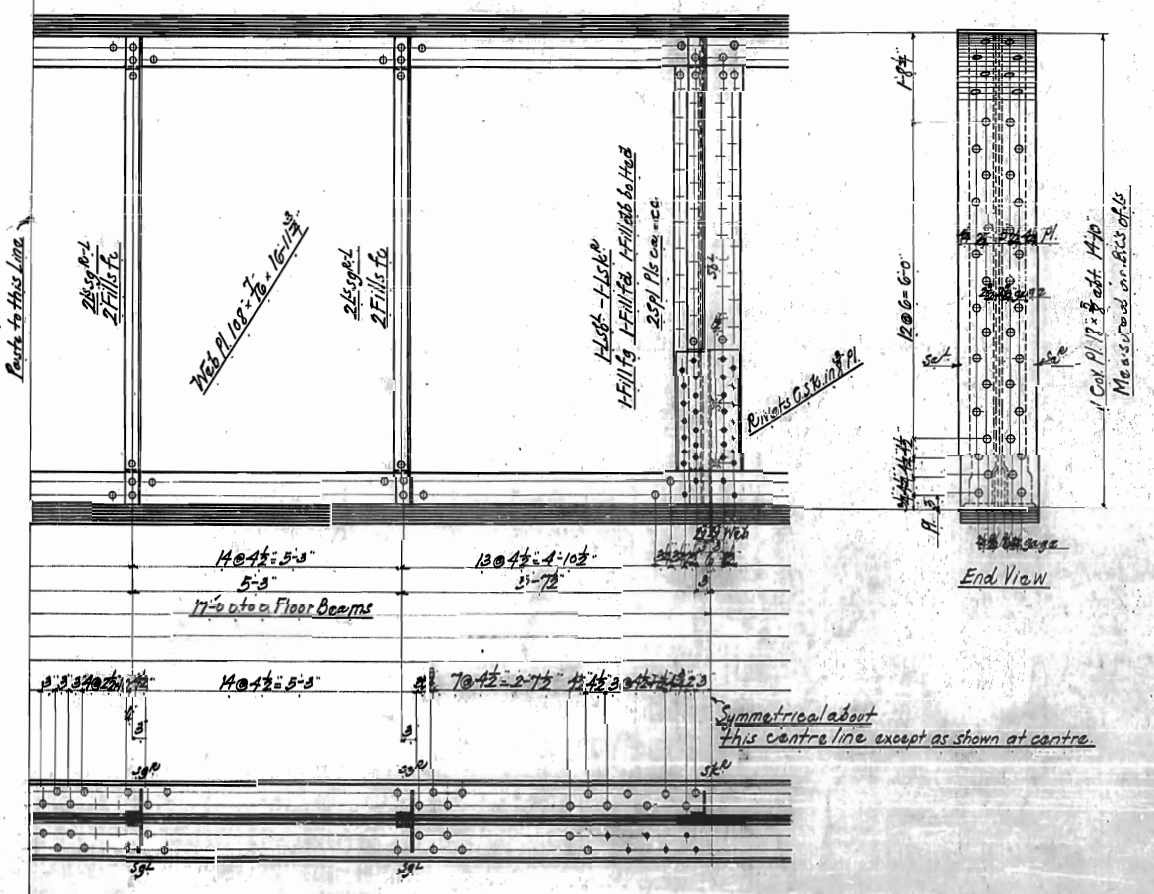
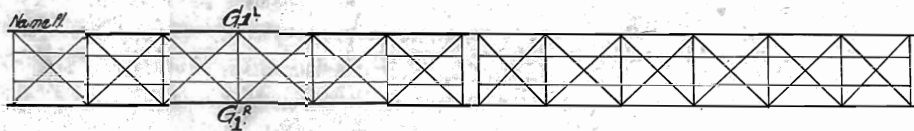


2x6-4-7 1/2 o.c. + 9-7 1/2 o.c. crimped
L L 6-4-8-5-11 1/2 sm
L L 6-4-7-5-11 1/4 sm
F Fill 4-8-5-33 1/2
S Fill 4-8-7-22-1-1/2-2-1/2
F Fill 14-8-2-14 dia
2x6-4-7 1/2-8-11 1/4 3/4 R²

Cut to this line

Order Sheet #10
Rev. 9-25-06

F-5-23-1912



REQUIRED LIST

No	Description	Quantity	Remarks
1	Girder	1	Shown
1	Girder	1	Shown

NOTE
 All material Medium C.H. Steel
 All rivets 7/8" diam.
 All open holes 1 1/2" diam.
 All holes punched full size except Floor Beam connections to Girders which are punched small and reamed 1/8" to match iron template

GIRDERS
 for
 Bridge over Abbotts Creek M.P. 44
 Southern Railway Co.
 25.1 Thru Pl. Girders
 Scale 1" = 1'-0"

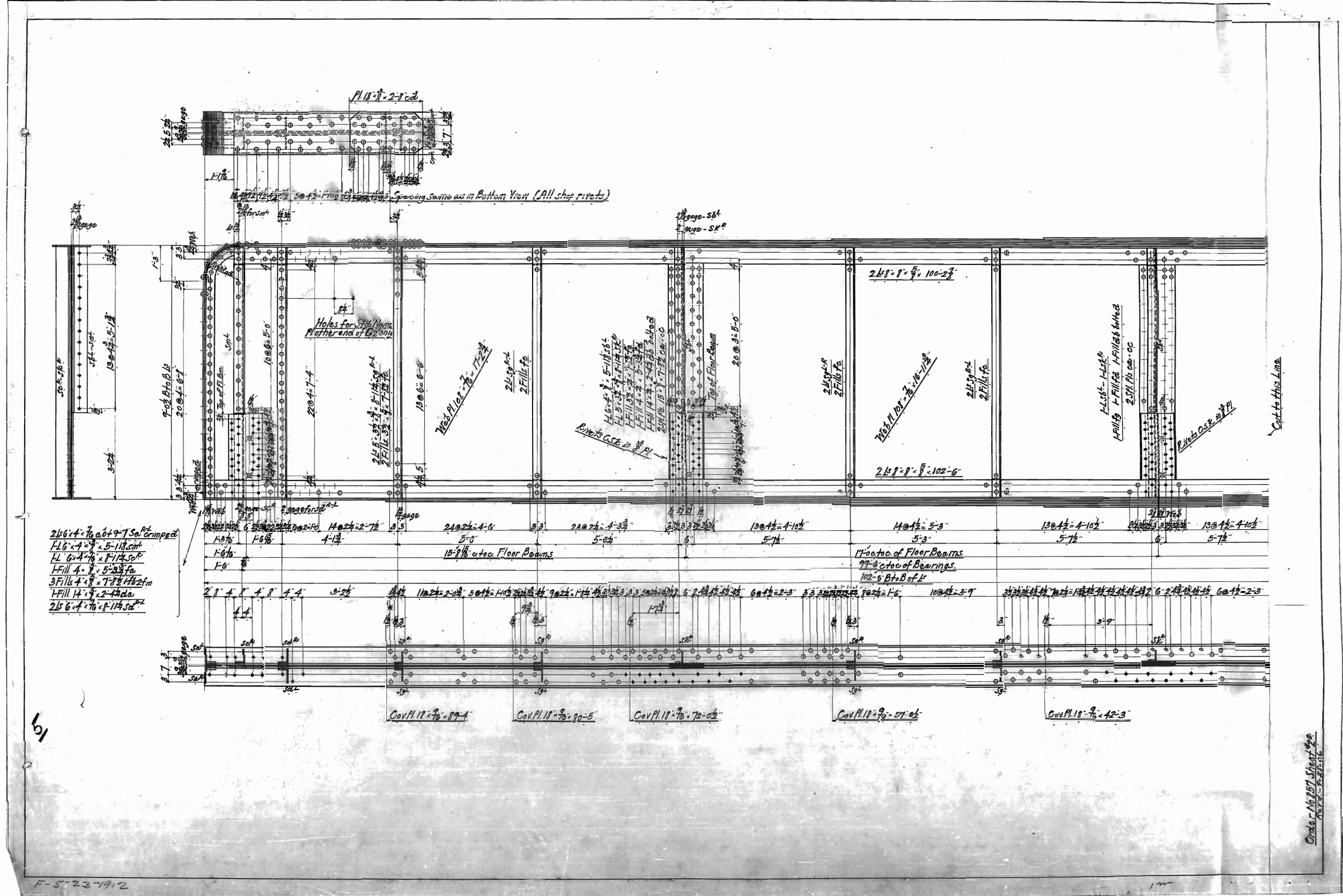
AMERICAN BRIDGE COMPANY
 ORDER ASSIGNED TO: **PENCOYD**
 WORK FABRICATED BY: **PENCOYD**
 MODEL: **EDGEWOOD** CHARGE: **SEAVER**
 DRAWN BY: **W.D.O.** DATE: **7-6-06**
 CHECKED BY: **A.S.C.** DATE: **7-18-06**
 SHEET NO. **1**

SHEET No. 10-5 ORDER No. **C157** PAGE No. 1

SHOP BILL

ITEM NO.	DESCRIPTION	LENGTH	WEIGHT	NO. OF	SECTION	LENGTH	ITEM
2	GIRDERS 12' x 12' 1/2"	102.88	102.88	1		102.88	27
4	Floors 8' x 8' 1/2"	102.88	102.88	1		102.88	26
7	Diagonal 12' x 12' 1/2"	16.11	16.11	1		16.11	1
8	Cov. Pl. 12' x 12' 1/2"	16.11	16.11	1		16.11	9
9	Pl. 12' x 12' 1/2"	16.11	16.11	1		16.11	10
10	Pl. 12' x 12' 1/2"	16.11	16.11	1		16.11	11
11	Pl. 12' x 12' 1/2"	16.11	16.11	1		16.11	14
12	Pl. 12' x 12' 1/2"	16.11	16.11	1		16.11	15
13	Pl. 12' x 12' 1/2"	16.11	16.11	1		16.11	17
14	Pl. 12' x 12' 1/2"	16.11	16.11	1		16.11	40
15	Pl. 12' x 12' 1/2"	16.11	16.11	1		16.11	41
16	Pl. 12' x 12' 1/2"	16.11	16.11	1		16.11	39
17	Pl. 12' x 12' 1/2"	16.11	16.11	1		16.11	43
18	Pl. 12' x 12' 1/2"	16.11	16.11	1		16.11	5
19	Pl. 12' x 12' 1/2"	16.11	16.11	1		16.11	56
20	Pl. 12' x 12' 1/2"	16.11	16.11	1		16.11	54
21	Pl. 12' x 12' 1/2"	16.11	16.11	1		16.11	5
22	Pl. 12' x 12' 1/2"	16.11	16.11	1		16.11	53
23	Pl. 12' x 12' 1/2"	16.11	16.11	1		16.11	52
24	Pl. 12' x 12' 1/2"	16.11	16.11	1		16.11	20
25	Pl. 12' x 12' 1/2"	16.11	16.11	1		16.11	72
26	Pl. 12' x 12' 1/2"	16.11	16.11	1		16.11	52
27	Pl. 12' x 12' 1/2"	16.11	16.11	1		16.11	70
28	Pl. 12' x 12' 1/2"	16.11	16.11	1		16.11	5
29	Pl. 12' x 12' 1/2"	16.11	16.11	1		16.11	5

SHEET No. 10-5 ORDER No. **C157** PAGE No. 1



2x6x4-76x6+9-7 So. Crimped
 FLG x 4 x 8-5-118 cut
 HL 6x4-76 x 8-114 SoP
 FFill 4-8-5-33 Pa
 3 Fill 4-8-7-82 FFill 2m
 FFill 4-8-2-44 da
 2x6-4-76-8-114 SoP

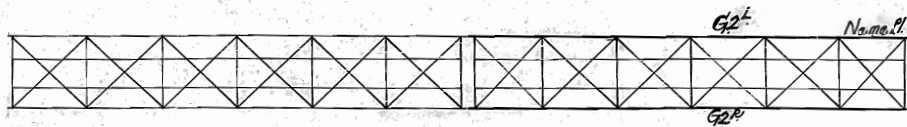
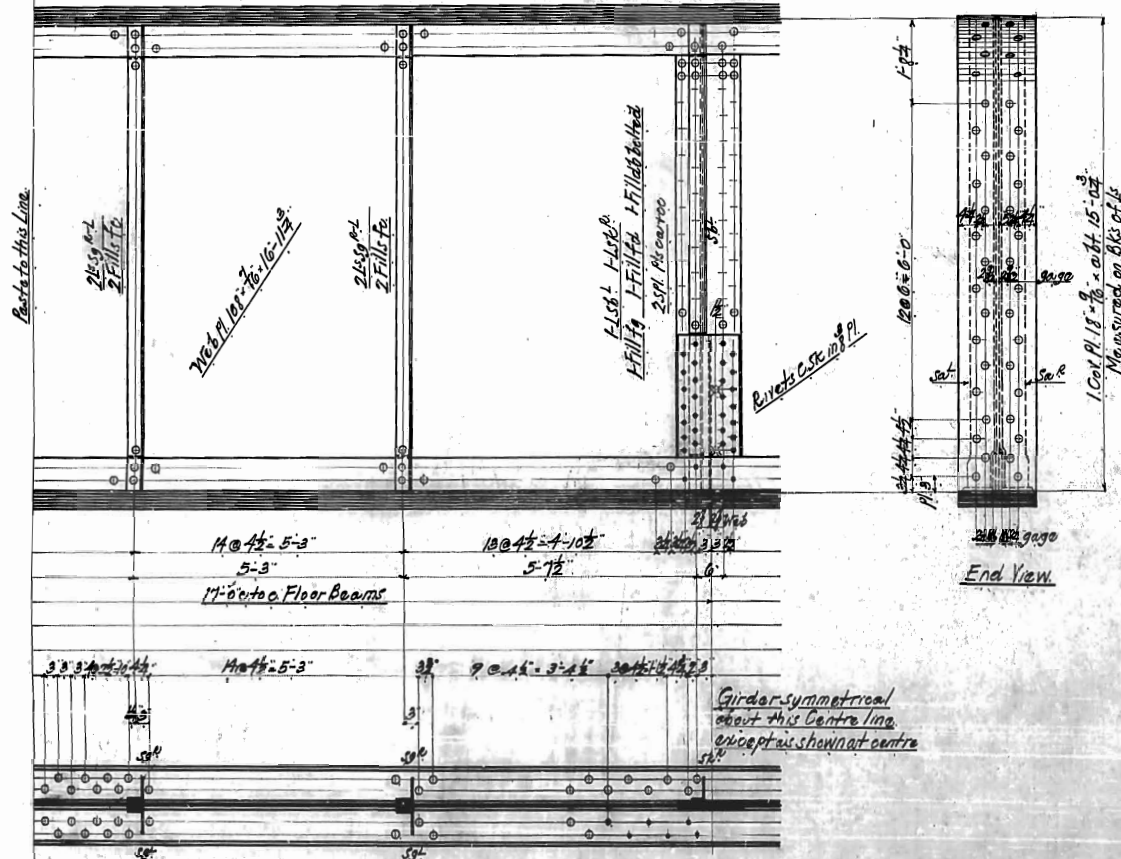
Holes for Steel Nails
Plaster end of 62 only

Spacing same as in Bottom View (All shop rivets)

61

Order - No 857 Sheet 2
 1870-228216

F-5-23-1912



REQUIRED LIST

No	Description	Mark
1	Girder	G21 shown
1	"	G22

NOTE
 All material Medium O.H. Steel
 All rivets 1/2 diam
 All open holes 1/2 diam
 All holes punched full size except Floor-Beam connections to Girders which are punched small and reamed to 1/8 to match iron template

GIRDERS
 for
 Bridge over Abbott's Creek, Mich.
 Southern Railway
 25-T Thrall Gir. Spans 110'-0" to 115'-0"
 Scale 3/16"

AMERICAN BRIDGE COMPANY
 ORDER REFERRED TO PENNSYLVANIA
 WORK FABRICATED AT PENNSYLVANIA
 MADE AT PENNSYLVANIA
 DRAWN BY W.G.C. DATE 7-6-06
 CHECKED BY B.S.G. DATE 9-14-06
 ORDER NO. C-157
 SHEET NO. 26

SHEET NO. 26b ORDER NO. C-157 PAGE NO. 2

SHOP BILL

No. of Pieces	DESCRIPTION	LENGTH	PIECE MARK	REMARKS	CALL NO. OF GIRDERS	NO. OF SECTIONS	LENGTH	ITEM NO.
1	GIRDER	110'-0"	G21					1
1	"	115'-0"	G22					2
2	FLANGE	110'-0"						3
2	FLANGE	115'-0"						4
2	WEB	110'-0"						5
2	WEB	115'-0"						6
2	FLANGE	110'-0"						7
2	FLANGE	115'-0"						8
2	WEB	110'-0"						9
2	WEB	115'-0"						10
2	FLANGE	110'-0"						11
2	FLANGE	115'-0"						12
2	WEB	110'-0"						13
2	WEB	115'-0"						14
2	FLANGE	110'-0"						15
2	FLANGE	115'-0"						16
2	WEB	110'-0"						17
2	WEB	115'-0"						18
2	FLANGE	110'-0"						19
2	FLANGE	115'-0"						20
2	WEB	110'-0"						21
2	WEB	115'-0"						22
2	FLANGE	110'-0"						23
2	FLANGE	115'-0"						24
2	WEB	110'-0"						25
2	WEB	115'-0"						26
2	FLANGE	110'-0"						27
2	FLANGE	115'-0"						28
2	WEB	110'-0"						29
2	WEB	115'-0"						30
2	FLANGE	110'-0"						31
2	FLANGE	115'-0"						32
2	WEB	110'-0"						33
2	WEB	115'-0"						34
2	FLANGE	110'-0"						35
2	FLANGE	115'-0"						36
2	WEB	110'-0"						37
2	WEB	115'-0"						38
2	FLANGE	110'-0"						39
2	FLANGE	115'-0"						40
2	WEB	110'-0"						41
2	WEB	115'-0"						42
2	FLANGE	110'-0"						43
2	FLANGE	115'-0"						44
2	WEB	110'-0"						45
2	WEB	115'-0"						46
2	FLANGE	110'-0"						47
2	FLANGE	115'-0"						48
2	WEB	110'-0"						49
2	WEB	115'-0"						50
2	FLANGE	110'-0"						51
2	FLANGE	115'-0"						52
2	WEB	110'-0"						53
2	WEB	115'-0"						54
2	FLANGE	110'-0"						55
2	FLANGE	115'-0"						56
2	WEB	110'-0"						57
2	WEB	115'-0"						58
2	FLANGE	110'-0"						59
2	FLANGE	115'-0"						60
2	WEB	110'-0"						61
2	WEB	115'-0"						62
2	FLANGE	110'-0"						63
2	FLANGE	115'-0"						64
2	WEB	110'-0"						65
2	WEB	115'-0"						66
2	FLANGE	110'-0"						67
2	FLANGE	115'-0"						68
2	WEB	110'-0"						69
2	WEB	115'-0"						70
2	FLANGE	110'-0"						71
2	FLANGE	115'-0"						72
2	WEB	110'-0"						73
2	WEB	115'-0"						74
2	FLANGE	110'-0"						75
2	FLANGE	115'-0"						76
2	WEB	110'-0"						77
2	WEB	115'-0"						78
2	FLANGE	110'-0"						79
2	FLANGE	115'-0"						80
2	WEB	110'-0"						81
2	WEB	115'-0"						82
2	FLANGE	110'-0"						83
2	FLANGE	115'-0"						84
2	WEB	110'-0"						85
2	WEB	115'-0"						86
2	FLANGE	110'-0"						87
2	FLANGE	115'-0"						88
2	WEB	110'-0"						89
2	WEB	115'-0"						90
2	FLANGE	110'-0"						91
2	FLANGE	115'-0"						92
2	WEB	110'-0"						93
2	WEB	115'-0"						94
2	FLANGE	110'-0"						95
2	FLANGE	115'-0"						96
2	WEB	110'-0"						97
2	WEB	115'-0"						98
2	FLANGE	110'-0"						99
2	FLANGE	115'-0"						100

F-5-23-1912

REV'D 9-28-06

SHEET NO. 26b

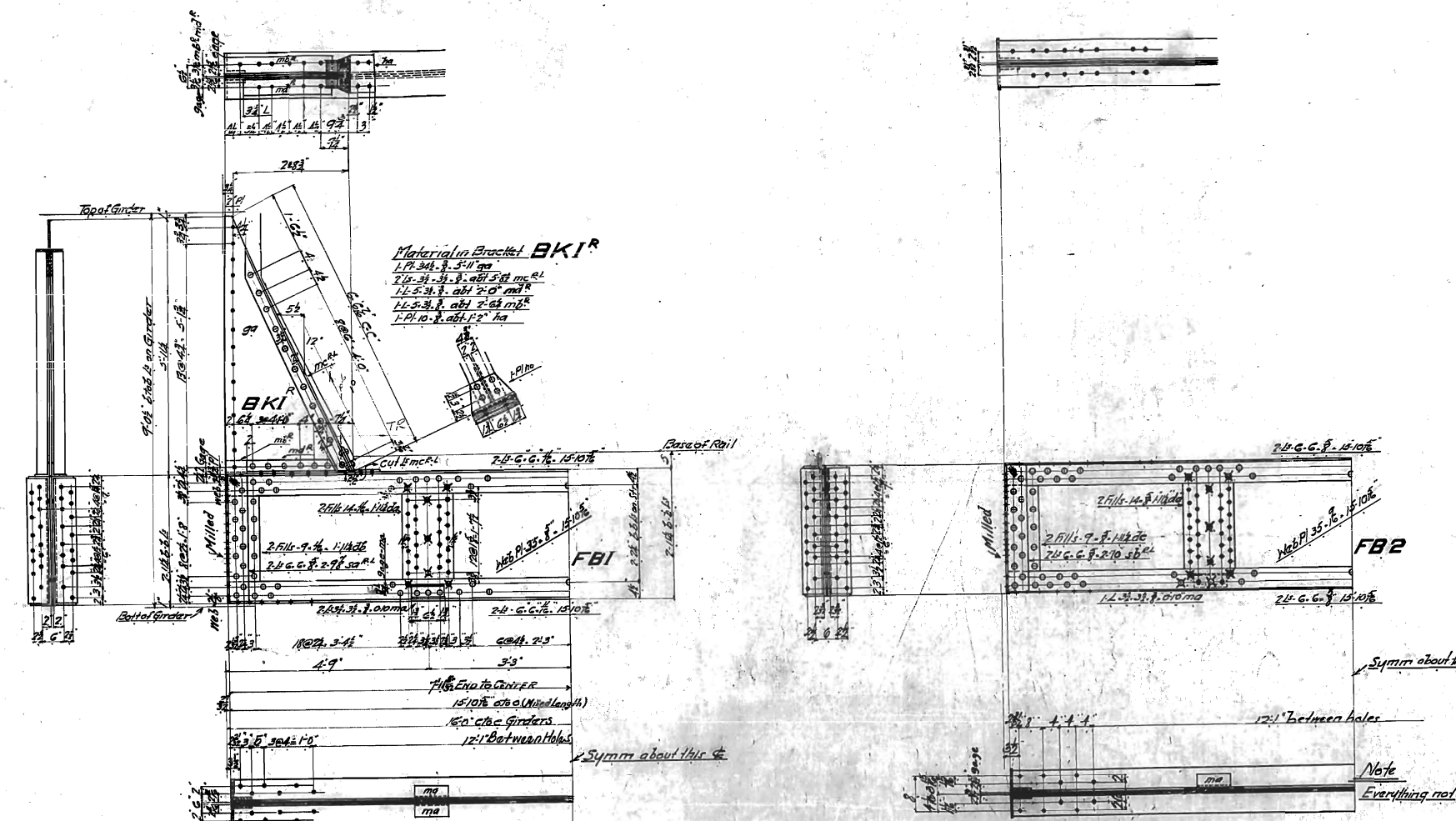
ORDER NO. C-157 PAGE NO. 2

SHOP BILL

NO. OF PIECES	DESCRIPTION	LENGTH FT. INCH.	PLATE MARK	REMARKS	CALL. BY ONE PIECE	NO. OF SECTIONS	LENGTH FT. INCH.	ITEM NO.
10 INT FLOOR BEAMS FBI								
10	G.C. 8" x 15" 103			FIN.		20	31 10 30	
10	Web Pl.	35" x 15" 103		"		5	31 10 5	
10	G.C. 8" x 12" 103	50 3/4"		"		4	31 6 33	
10	Flt.	9" x 8" 103		"		17	30 0 50	
10	Flt.	9" x 8" 103		"		1	35 4 23	
10	Flt.	14" x 8" 103		"		1	35 4 23	
4 END FLOOR BEAMS FB2								
4	G.C. 8" x 15" 103			FIN.		8	31 10 30	
4	Web Pl.	35" x 15" 103		"		2	31 10 6	
4	G.C. 8" x 12" 103	50 3/4"		"		1	31 6 33	
4	Flt.	9" x 8" 103		"		17	30 0 50	
4	Flt.	9" x 8" 103		"		1	35 4 23	
4	Flt.	14" x 8" 103		"		1	35 4 23	
71 BRACKETS BK1								
71	Pl.	34" x 8" 5 11		MEAS. SET		28	32 5 11 28	
24	Fl.	3 1/2" x 7 1/2" 8 1/2		MEAS. SET		1	30 0 50	
28	Fl.	3 1/2" x 7 1/2" 8 1/2		MEAS. SET		1	29 11 42	
28	Fl.	3 1/2" x 7 1/2" 8 1/2		MEAS. SET		1	32 7 4	
28	Fl.	3 1/2" x 7 1/2" 8 1/2		MEAS. SET		1	32 7 4	

REQUIRED LIST

NO	Description	Mark
10	INT FLOOR BEAM	FBI
4	END "	FB2
14	BRACKETS	BK1
14	"	BK1



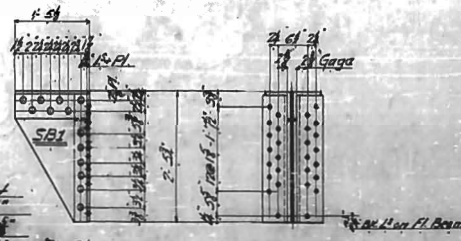
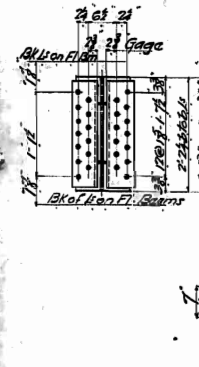
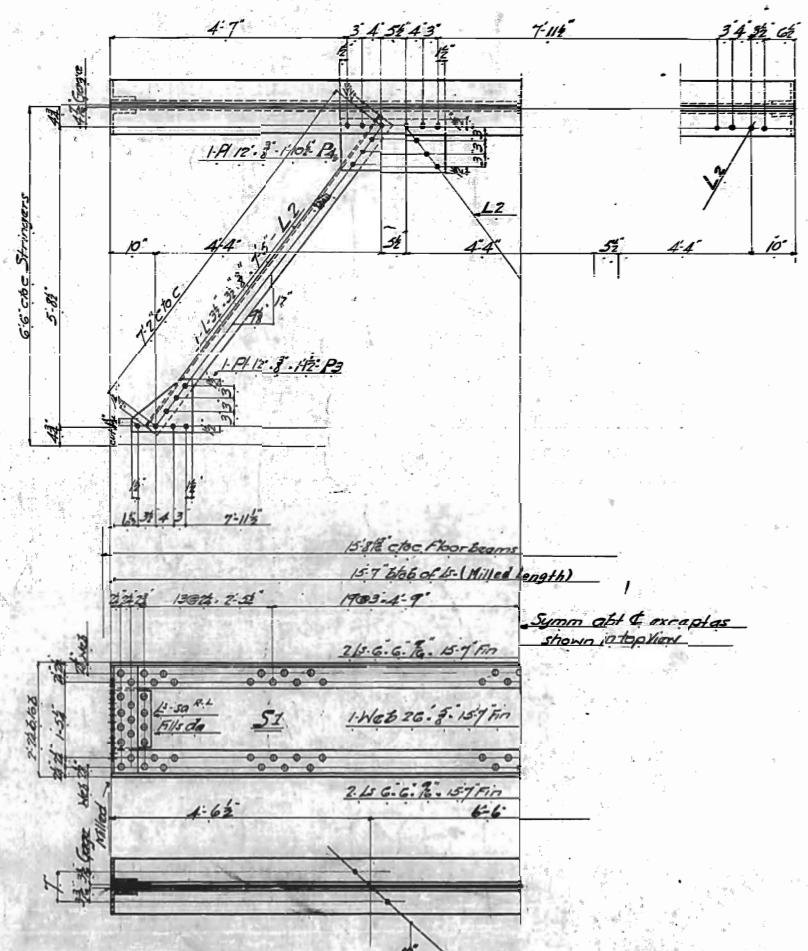
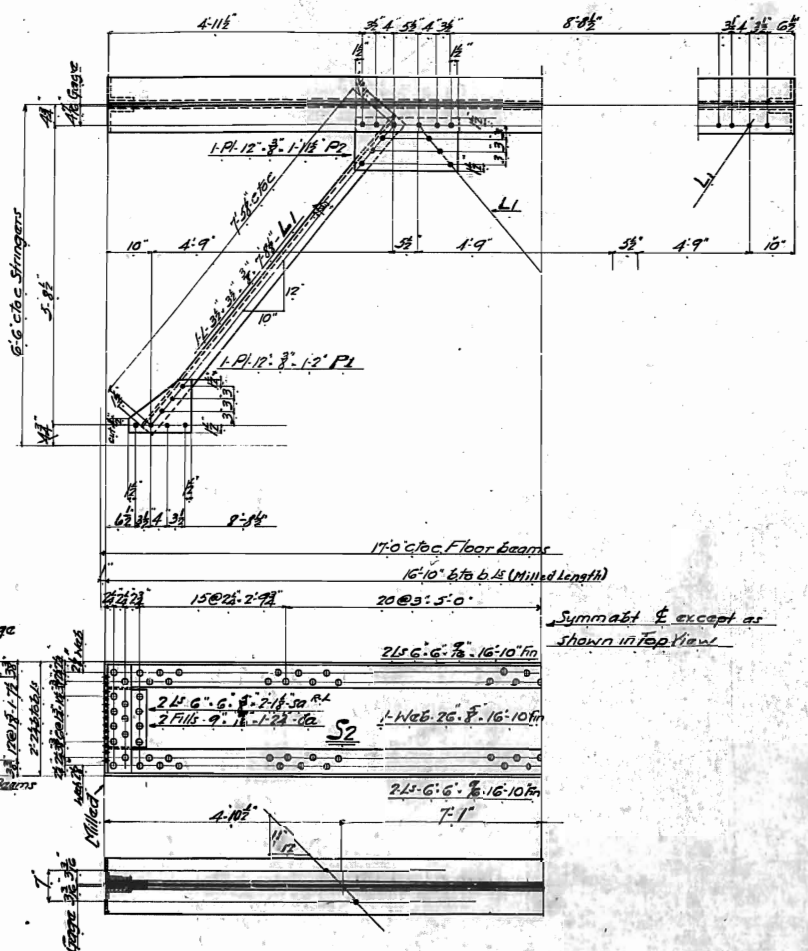
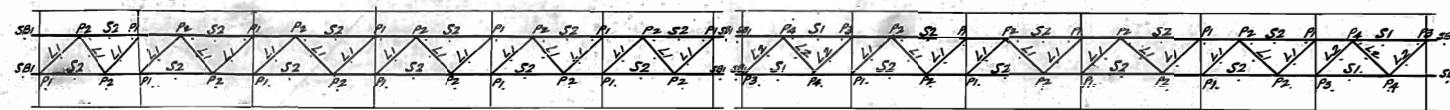
Note

- All material Med O.H. Steel
- All rivets 3/8"
- All open holes 1/8"
- All holes punched full size except floor beam and stringer connections which are punched small andreamed to 1/8" to match iron template

FLOOR BEAMS
for
Bridge over Abbotts Creek N.P. 313
Southern Ry. Co.
2 1/2" thru 1 1/2" Spacing
Scale 3/4" = 1'-0"

AMERICAN BRIDGE COMPANY
ORDER ASSIGNED TO FENCOLD
NEW FABRICATED AT FENCOLD
MADE BY EXPERTS SOUTH CHINA OF JAPAN
DRAWN BY D.R.P. DATE 7-5-24
CHECKED BY A.S.G. DATE 9-20-24
ORDER NO. C857 SHEET NO. 3

61



Stringer Bracket
 2 1/2" x 6" x 7/8" x 1-5"
 1 Web 1 1/2" x 3/4" x 2-5"
 2 Fls 3/4" x 3 1/2" x 2-5"
 2 Fls 3/4" x 1 1/2" x 2-5"

NO	Description	Mark
4	Stringers	S1
20	Stringers	S2
6	Laterals	L1
20	Laterals	L2
4	Lateral Plates	LP1
4	Lateral Plates	LP2
4	Lateral Plates	LP3
4	Lateral Plates	LP4
8	Stringer Brackets	SBI

Note
 All material Mild C.A. Steel
 All rivets 5/8"
 All open holes 7/8"
 All holes punched full size except
 Stringer connections to floor beams which are punched
 small and reamed to fit to match non-tempered

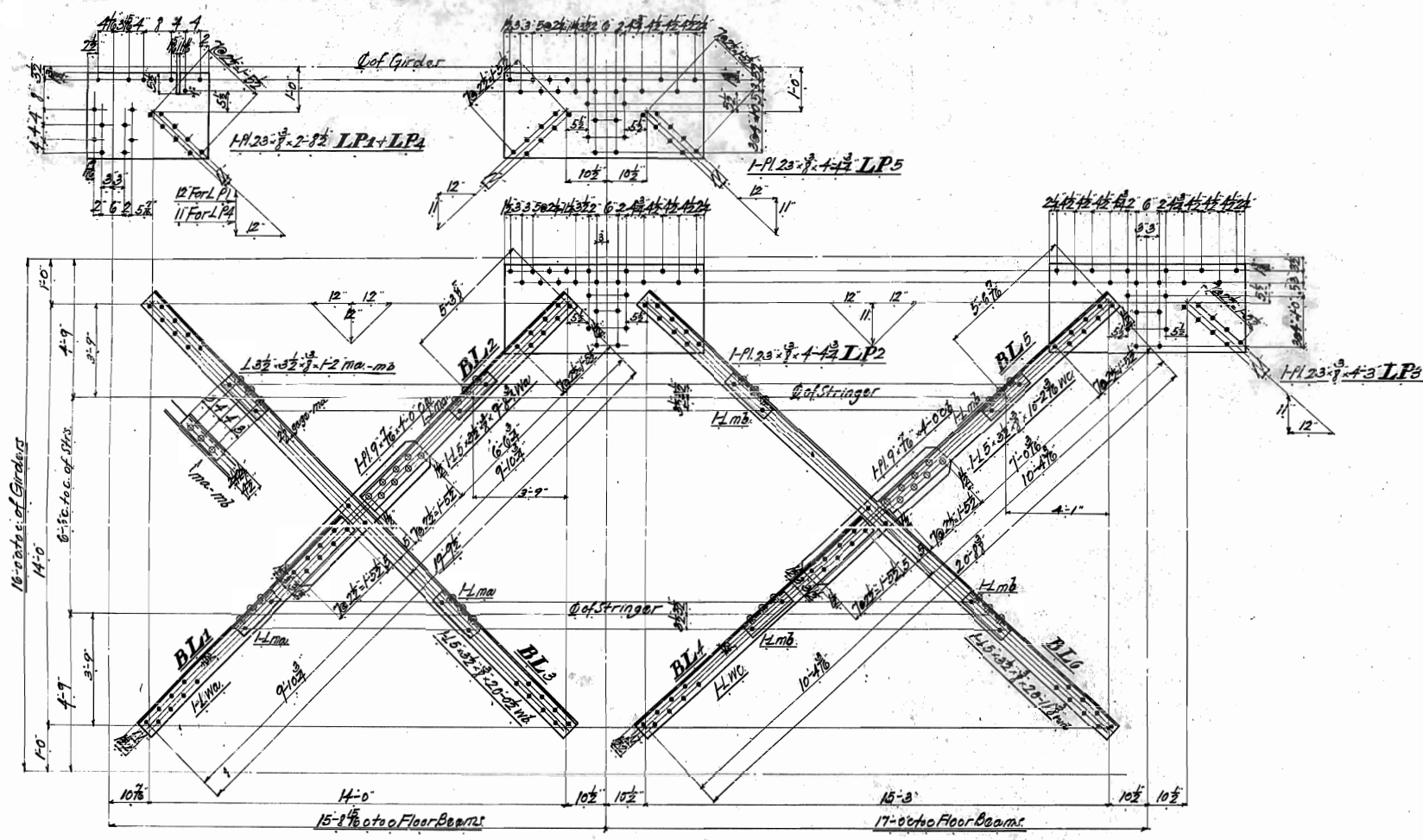
STRINGERS & BRACING
 for
 Bridge over Abbotts Creek N.P.
 Southern Railway Co.
 2 & 3 Truss spans
 Scale A - 1/4"

AMERICAN BRIDGE COMPANY
 ORDER REFERRED TO FENCOYD
 WORK FABRICATED AT FENCOYD
 MADE AT EDGE MOUNTAIN BRIDGE CO. SEAVERTON
 DRAWN BY H.B.C. DATE 7/6/06
 CHECKED BY A.S.C. DATE 7-20-06
 ORDER NO. C-857 SHEET NO. 4

SHOP BILL				CAL. BY ONE PIECE		NO. OF SECTIONS		LENGTH		WT.	
NO. OF SECTIONS	DESCRIPTION	LENGTH	PIECE MARK	PIECES	SECTION	FT.	INS.	NO.	NO.	NO.	NO.
4 STRINGERS - S1											
16	Fls	6'-6" x 15'-7"	Fin	8		81	8 1/2	37			
4	Web Pls	6'-6" x 15'-7"		2		21	3 1/2	8			
16	Fls	6'-6" x 15'-7"	SON	8		25	7 1/2	34			
16	Fls	9'-2 1/2" x 12'-2 1/2"	CLAS	4		28	9	25			
20 STRINGERS - S2											
20	Fls	6'-6" x 16'-10"	Fin	20		33	9	35			
20	Web Pls	6'-6" x 16'-10"		10		33	9 1/2	7			
20	Fls	6'-6" x 16'-10"	SON	8		25	7 1/2	34			
20	Fls	9'-2 1/2" x 12'-2 1/2"	CLAS	4		28	9	25			
6 LATERALS - L1											
6	L	3'-4 3/4" x 7'-5"				30	0	50			
20 LATERALS - L2											
20	L	3'-4 3/4" x 7'-5"		10		23	2	51			
8 STRINGER BRACKETS - SBI											
16	L	6'-6" x 1'-5"		1		22	10	38			
8	Web Pls	6'-6" x 1'-5"		1		20	1	9			
16	Fls	6'-6" x 1'-5"									
16	Fls	6'-6" x 1'-5"									
LATERAL PLATES											
20	Pls	17'-8" x 1'-2"	LP1								
20	Pls	17'-8" x 1'-2"	LP2								
4	Pls	17'-8" x 1'-2"	LP3								
4	Pls	17'-8" x 1'-2"	LP4								

SHOP BILL

NO. OF PAGES	DESCRIPTION	LENGTH FT. INCH.	MARK	REMARKS	CAL. WT. ONE PIECE	NO. OF PIECES	SECTION	LENGTH FT. INCH.	ITEM NO.
2 Bottom Laterals BL2									
2	LS	5'-3 1/2" 9 1/2"	WLB			1		19 6 49	
2	LS	5'-3 1/2" 9 1/2"	WLB			1		30 0 50	
2	PLS	1'-7 1/2" 4 0"	CLB						5
2 Bottom Laterals BL3									
2	LS	5'-3 1/2" 9 1/2"	WLB			1		19 6 49	
2	LS	5'-3 1/2" 9 1/2"	WLB			1		30 0 50	
2 Bottom Laterals BL4									
2	LS	5'-3 1/2" 9 1/2"	WLB					20 1 48	
4	PLS	1'-7 1/2" 4 0"	CLB					30 0 50	
10 Bottom Laterals BL4									
10	LS	5'-3 1/2" 9 1/2"	WLB			5		20 5 47	
10	LS	5'-3 1/2" 9 1/2"	WLB			5		30 0 50	
10 Bottom Laterals BL5									
10	LS	5'-3 1/2" 9 1/2"	WLB			5		20 5 47	
10	LS	5'-3 1/2" 9 1/2"	WLB			5		30 0 50	
10	PLS	1'-7 1/2" 4 0"	CLB						5
10 Bottom Laterals BL6									
10	LS	5'-3 1/2" 9 1/2"	WLB					20 11 45	
20	LS	5'-3 1/2" 9 1/2"	WLB					30 0 50	
Bottom Lateral PLS									
4	PLS	23'-0" 9 2 8 1/2"	LP2			1		30 9 67	
4	PLS	23'-0" 9 2 8 1/2"	LP4						
4	PLS	23'-0" 9 2 8 1/2"	LP2			1		25 8 69	
12	PLS	23'-0" 9 2 8 1/2"	LP2			2		25 8 69	
4	PLS	23'-0" 9 2 8 1/2"	LP2					26 6 68	



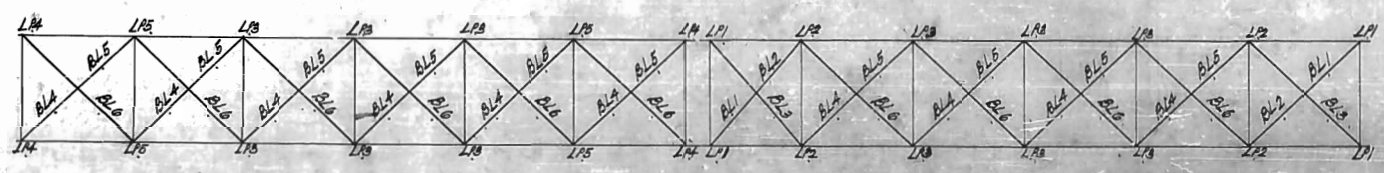
REQUIRED LIST

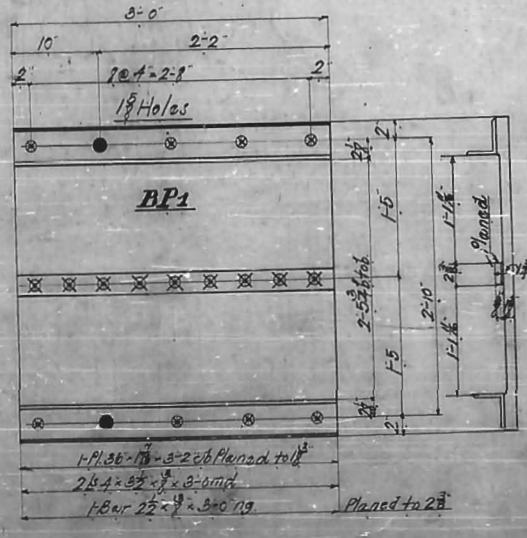
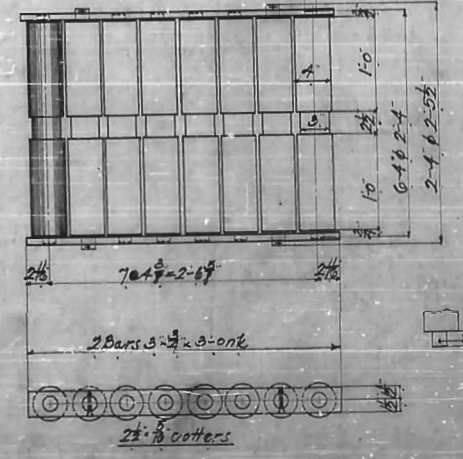
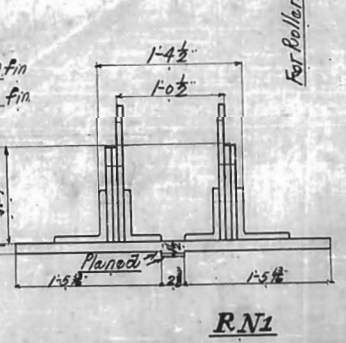
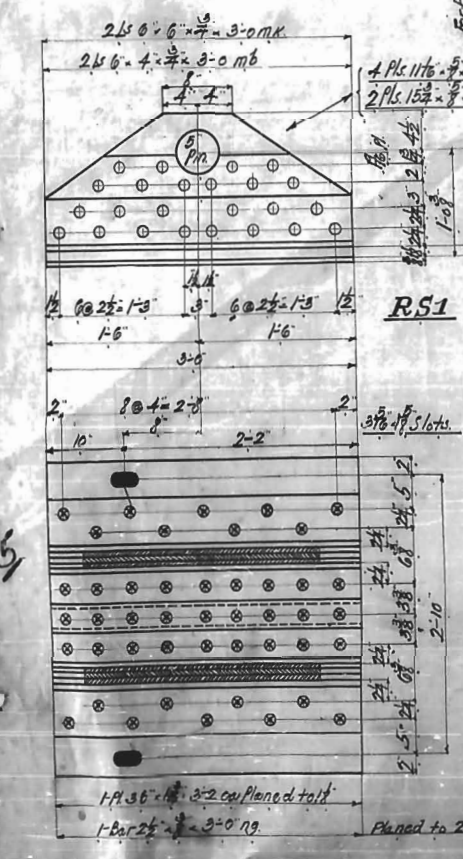
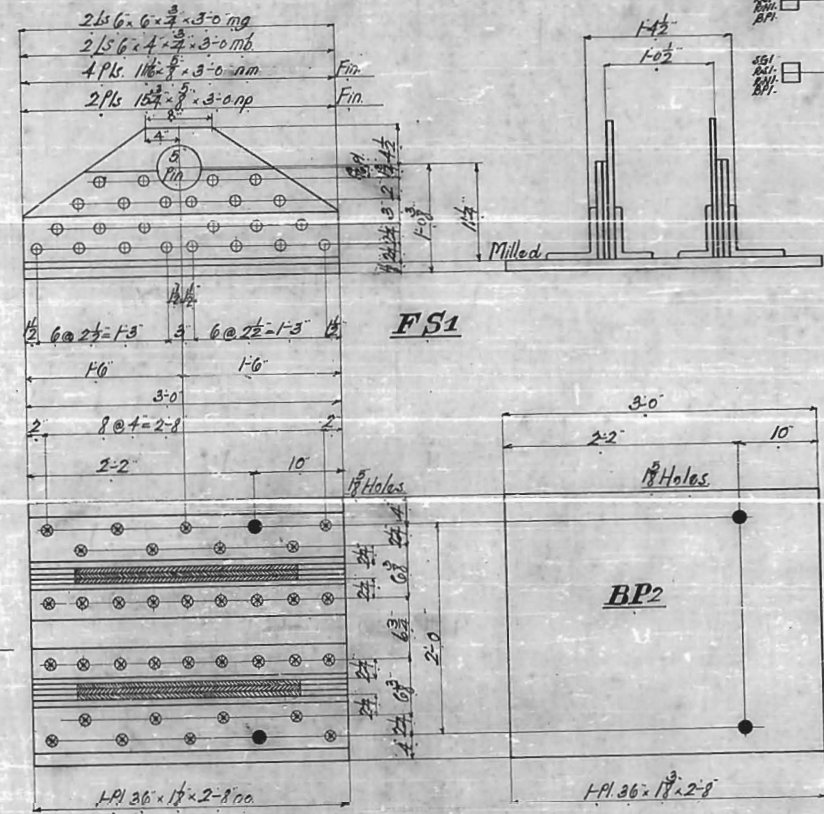
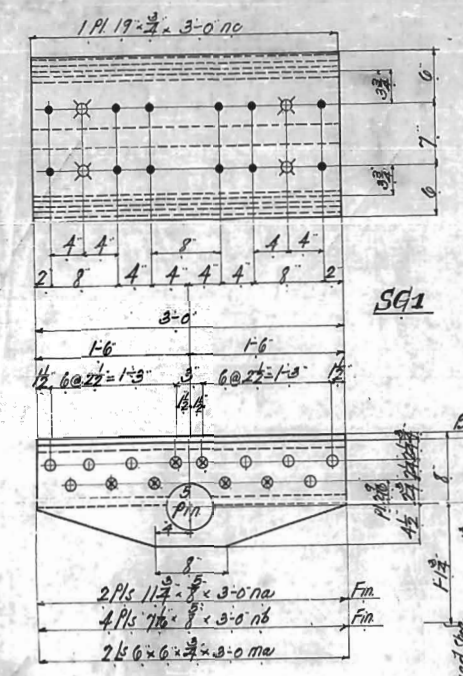
No	Description	Mark
2	Bottom Laterals	BL1
2	"	BL2
2	"	BL3
10	"	BL4
10	"	BL5
10	"	BL6
4	Bottom Lateral PLS	LP1
4	"	LP2
12	"	LP3
4	"	LP4
4	"	LP5

NOTE
 All material Medium CH Steel
 All rivets diam.
 All open holes 1/8 diam.
 All holes punched full size.

BOTTOM LATERALS
 for
 Bridge over Abbotts Creek
 Southern Railway Co.
 2 S.T. Through Spans
 Scale 3/4" = 1'-0"

AMERICAN BRIDGE COMPANY, PLANT
 ORDER ASSIGNED TO PENNSYLVANIA PLANT
 WORK FABRICATED AT PENNSYLVANIA PLANT
 MADE AT EDGE MOUNTAIN CHARGE OF SEARVER
 DRAWN MADE BY W.C.C. DATE 9-5-06
 CHECKED BY A.S.C. DATE 9-21-06
 ORDER NO. C-857 SHEET NO. 5





REQUIRED LIST

No	Description	Mark
8	Shoes	SG1
4	Roller Shoes	RS1
4	Nests	RN1
4	Bed Plates	BP1
4	Fixed Shoes	FS1
4	Bed Plates	BP2

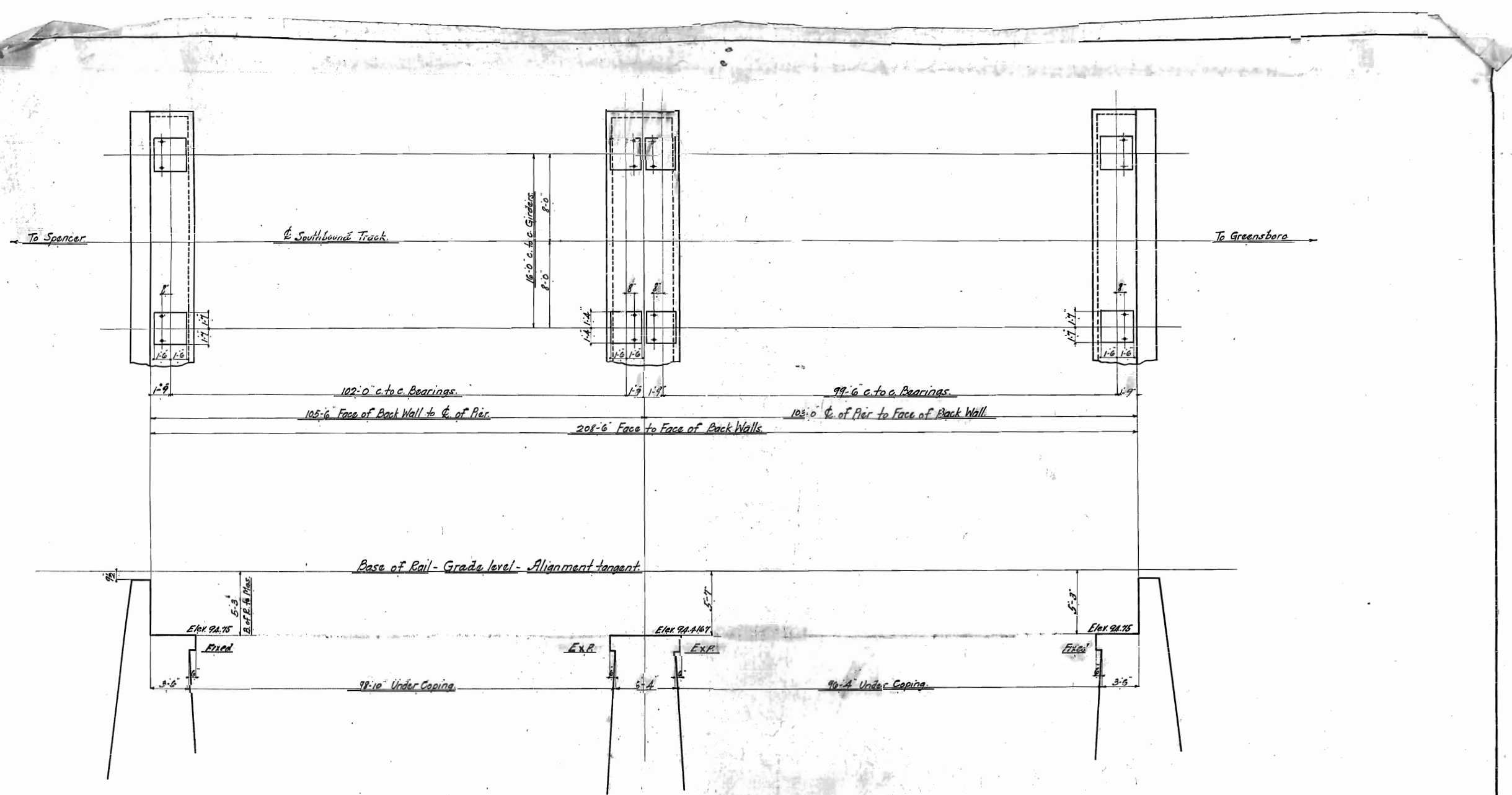
NOTE
 All material Med. O.H. Steel
 All nests 3"
 All holes 1/8" - except for Anchor Bolts
 All holes punched full size.

SHOES ROLLERS + BED PLATES
 For
 Bridge over Abbotts Creek, Memphis
 Southern Railway Co.
 25 T. Thrift Street, Memphis, Tenn.
 Scale 1/2" = 1'-0"

AMERICAN BRIDGE COMPANY
 PENCO, MD.
 MADE IN U.S.A.
 ORDER NO. 0857

SHOP BILL

NO.	DESCRIPTION	QUANTITY	SECTION	MARK	LENGTH	WEIGHT
8	Shoes SG1	8	1		24 3/4	61
4	Roller Shoes RS1	4	1		24 3/4	63
4	Nests RN1	4	1		24 3/4	63
4	Bed Plates BP1	4	1		24 3/4	63
4	Fixed Shoes FS1	4	1		24 3/4	63
4	Bed Plates BP2	4	1		24 3/4	63

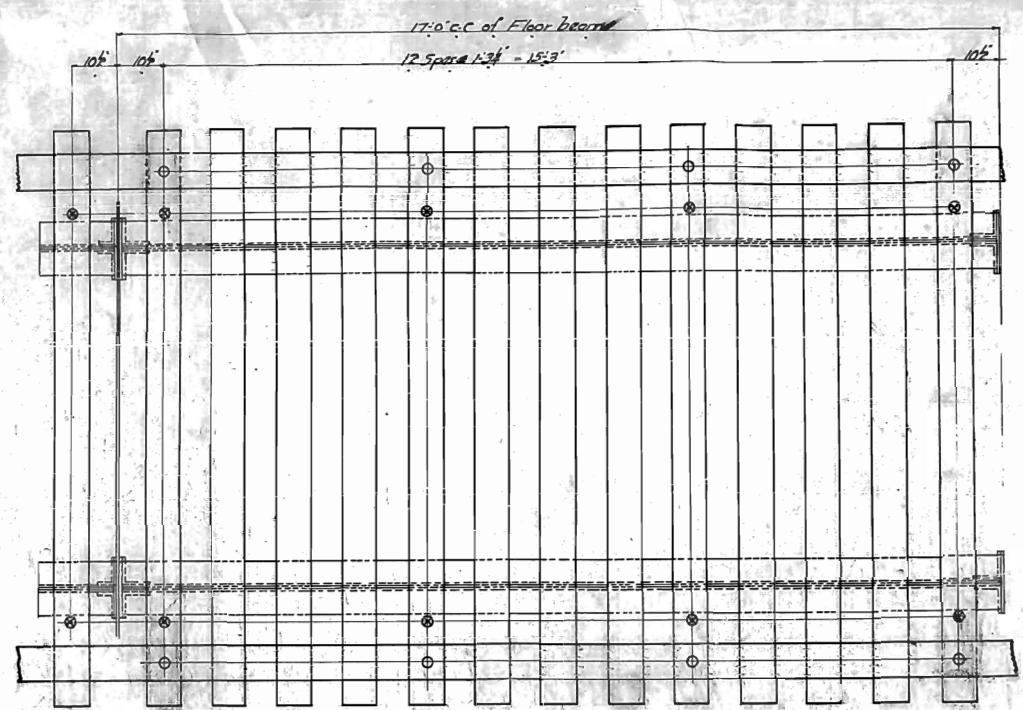


† Sheet lead under all bed plates.
 ‡ Anchor Bolts 9" in Masonry.

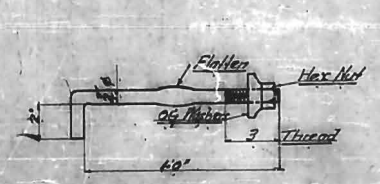
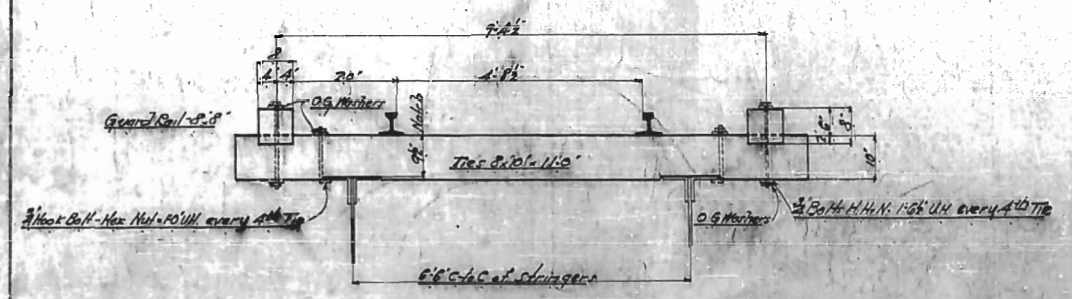
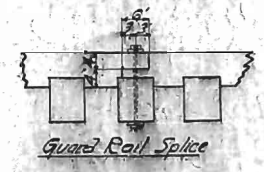
54

MASONRY PLAN
 BRIDGE OVER ABBOTTS CREEK M.P. 316.3
 Southern Railway Co.
 2-S.T. Thru Pi. Gir. Spans. 105'-0" o.t.o.
 102'-6" o.t.o.
 Scale 1/2"=1'-0"
 AMERICAN BRIDGE CO.
 PENDROYD
 MADE AT EDGE MOOR IN CHARGE OF SEAYER
 MADE BY W.C.C. DATE 11/16/06
 CHECKED BY G.W.P. DATE 1/22/06
 ORDER NO. 0851 SHEET NO. E1

F-5-23-1412



Note
 ○ - Denotes Guard Rail Bolt
 ⊗ - " Hook Bolts

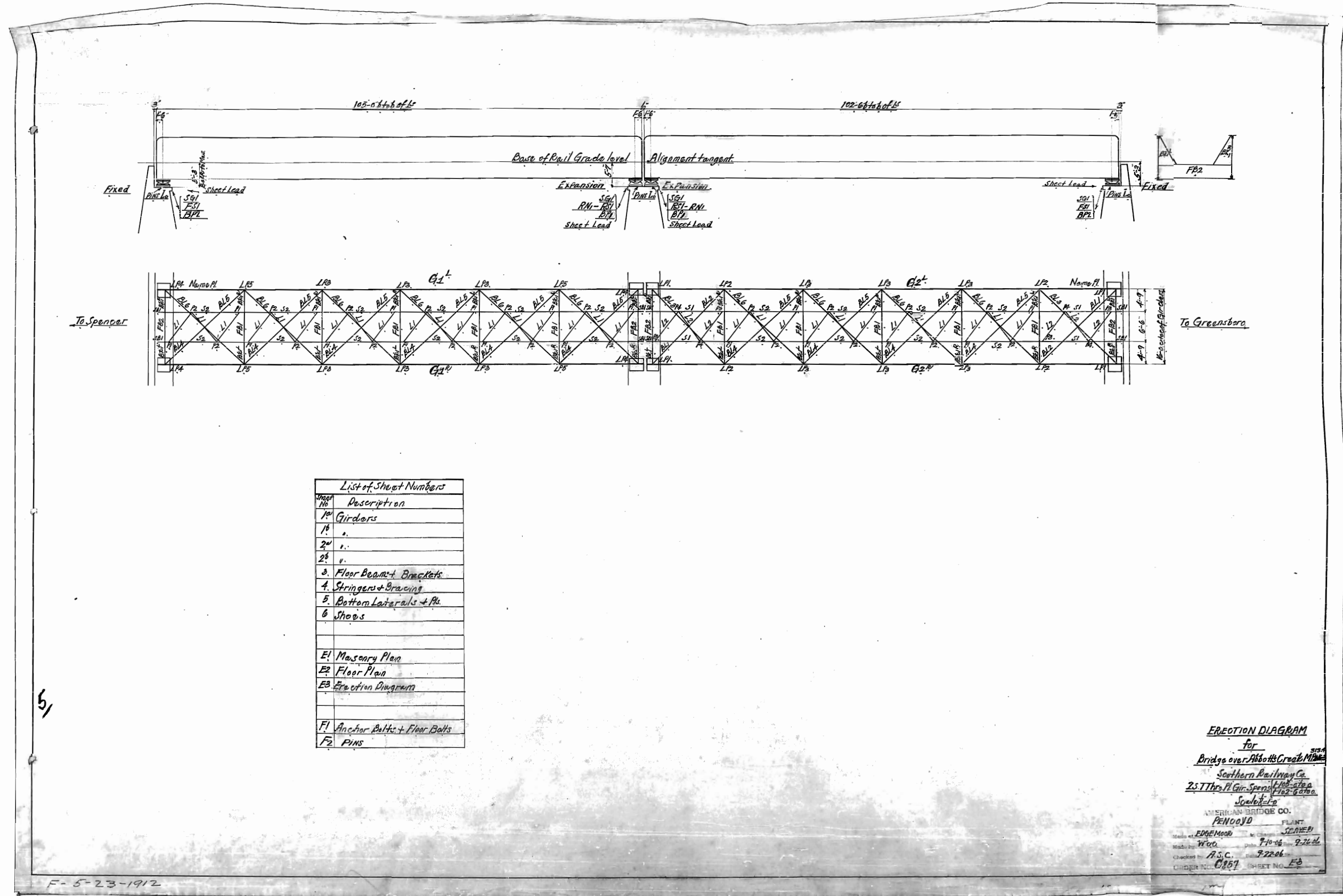


Floor Plan
 for
 Bridge over Abbotts Creek MP 313.4
 Southern Railway Co.
 2x8 Truss Pl. Girder Spans Floor 8' x 8'
 Scale 3/4" = 1'-0"

SHOP BILL				
NO. OF PAGES	DESCRIPTION	QUANTITY	DATE MADE	REMARKS
160	Ties	8,110		Estimated by RR Co.
18	Guard Rls.	8,870		RR Co.
126	2x8 Trusses	1,162		RR Co.
372	2x4 Members	14,484		RR Co.

See Sheet # F1

AMERICAN BRIDGE COMPANY
 ORDER ASSIGNED TO PENCORD
 WORK FABRICATED AT PENCORD
 MADE AT CINCINNATI OHIO BY SLOAN
 DRAWN MADE BY RST DATE 9-11-26
 DRAW CHECKED BY A.B.C. DATE 9-22-26
 ORDER NO. 6357 SHEET NO. 1



List of Sheet Numbers

Sheet No.	Description
1 st	Girders
2 nd	"
3 rd	"
4 th	"
5 th	Floor Beams + Brackets
6 th	Stringers + Bracing
7 th	Bottom Laterals + Pls
8 th	Shoes
E1	Masonry Plan
E2	Floor Plan
E3	Erection Diagram
F1	Anchor Bolts + Floor Bolts
F2	PINS

ERECTION DIAGRAM
 for
 Bridge over Abbotts Creek N.C.
 Southern Railway Co.
 25 T. Thr. N. Gir. Spans 112'-6" to 112'-0"
 Scale 1/4" = 1'-0"
 AMERICAN BRIDGE CO.
 PENNOYD PLANT
 EDGEWOOD, PENNSYLVANIA
 Made by W.C. Date 9-10-26
 Checked by R.S.C. Date 9-22-26
 ORDER NO. C957 SHEET NO. E3

F-5-23-1912